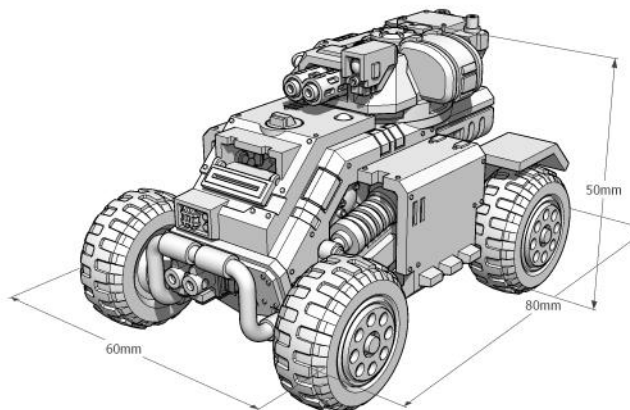
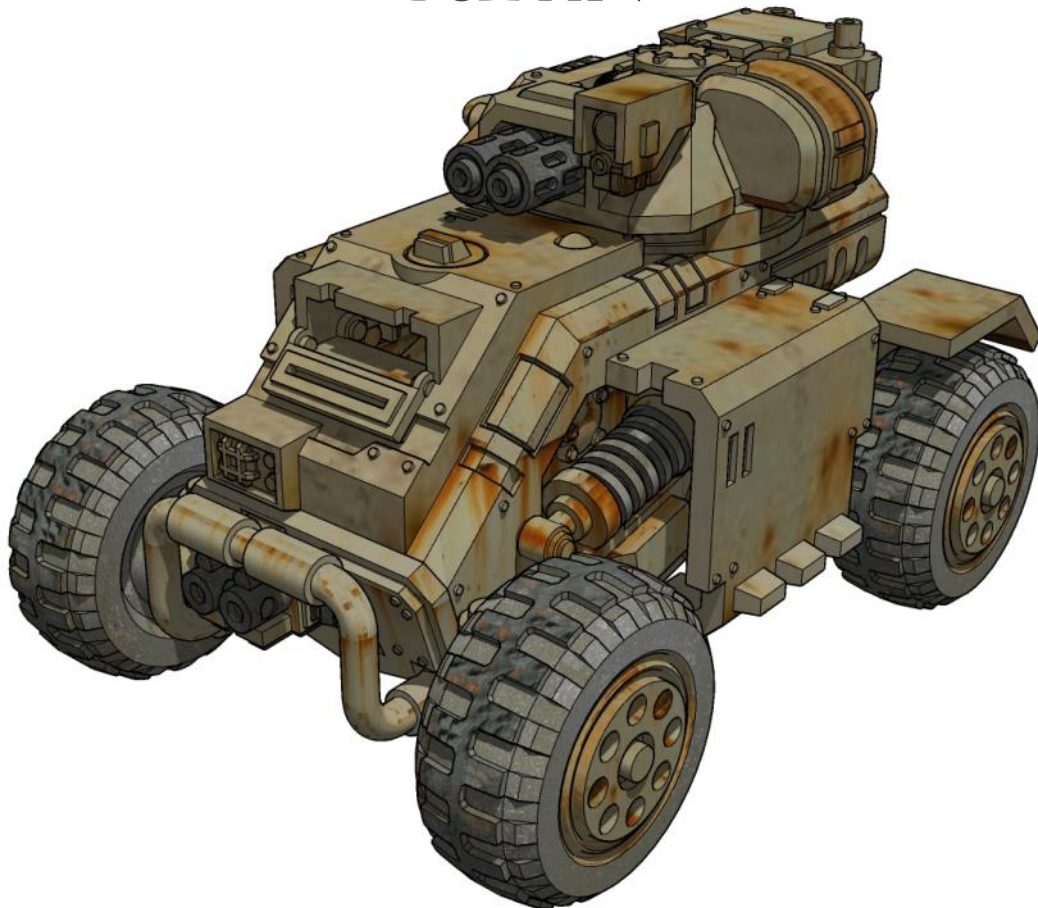


MINIATURE SCENERY

FOX ATV



MINIATURE SCENERY IS DESIGNED FOR 28MM MINIATURES,
IDEAL FOR GAMERS AND COLLECTORS



FOR DETAILED, EASY TO FOLLOW INSTRUCTIONS VISIT
WWW.MINIATURESCENERY.COM



Contents may contain small parts. Not suitable for children under 6 years old. The exclusive copyright on the model designs and components within this case is the property of Miniature Scenery, 2016. All rights reserved.

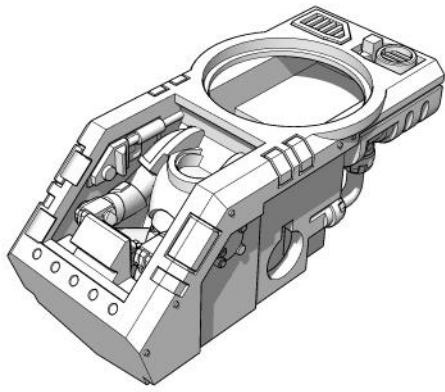
Instructions

FOX ATV

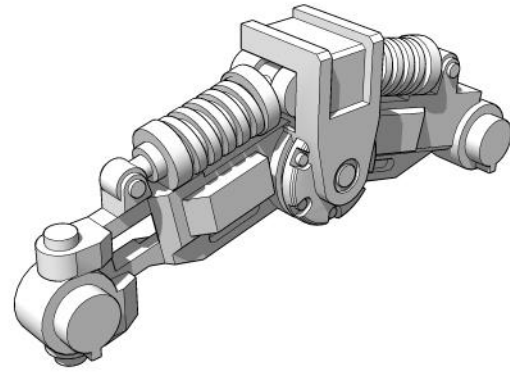
This Model is designed with Resin based 3d Printing in mind. It's totally possible to print the model using FDM printers, but the quality will obviously suffer. The parts are supplied as individual STL parts which have all been test printed on a Formlabs form 3. I don't envision any problems using a more budget/hobby printer such as an anycubic photon or elegoo mars or the like.



The model uses approximately 70ml of material before supports , and mine was about 120ml with. But I wasn't being too fussy.



ATVHull



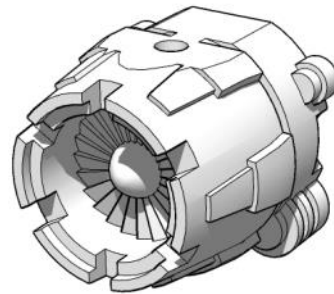
ATVSuspension

(Print 2, one mirrored)

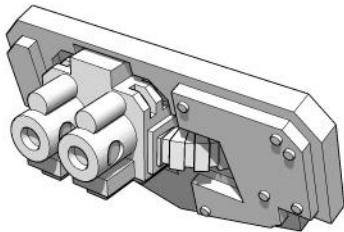


ATVWheel

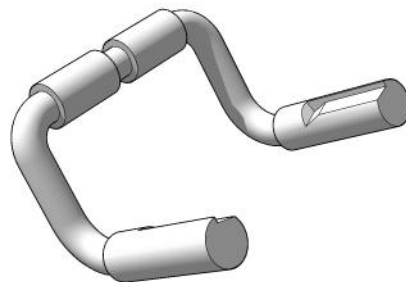
(you'll need approximately 4
of these...)



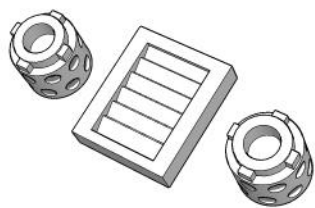
ATVEngine



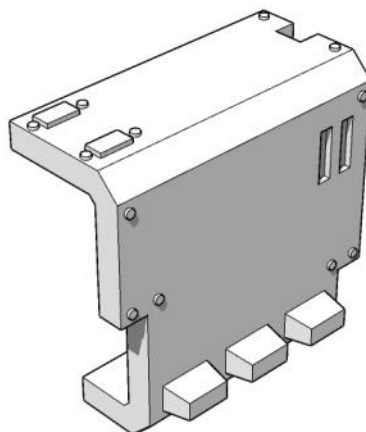
ATVFront



ATVBullbar

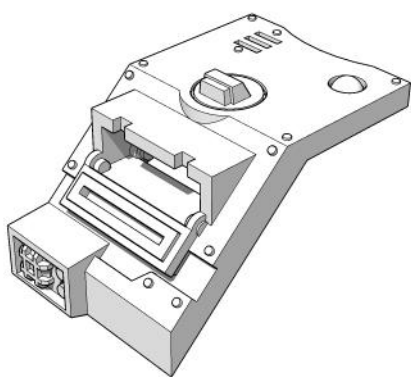


ATVDetails



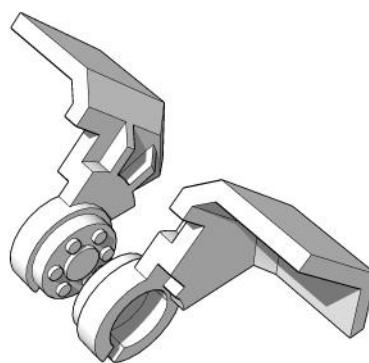
ATVArmour

(Print 2, one mirrored)

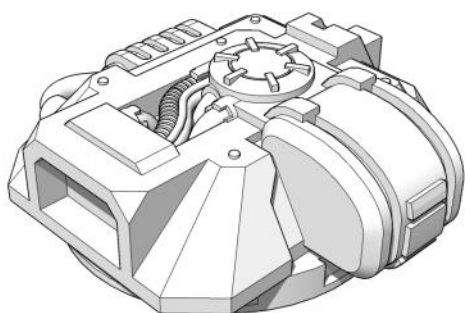


ATVhatch

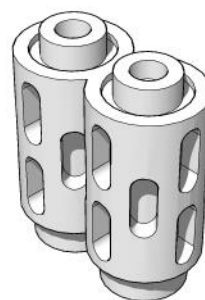
(Can be posed open)



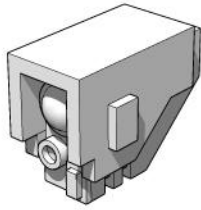
ATVguard



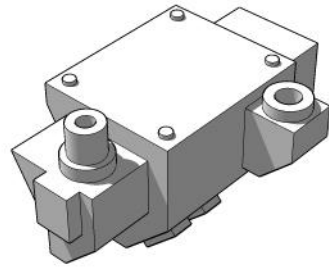
ATVTurretF



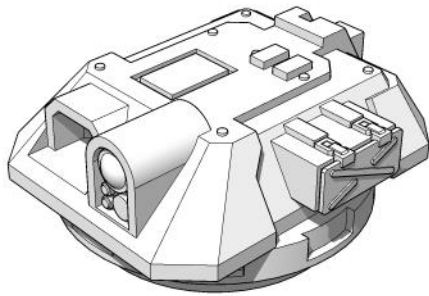
ATVFusion



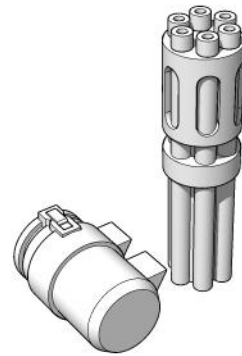
ATVTargetter



ATVBustle

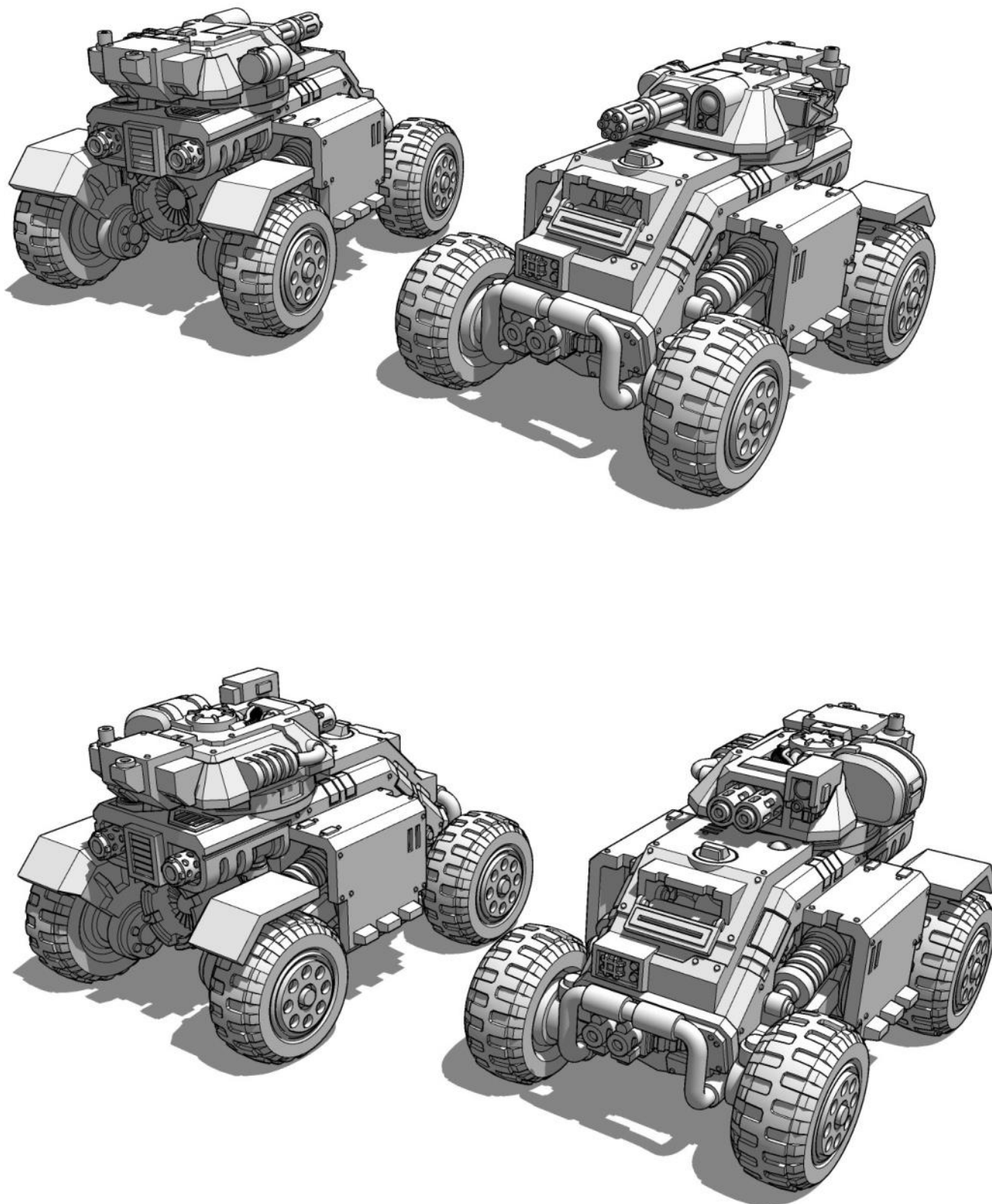


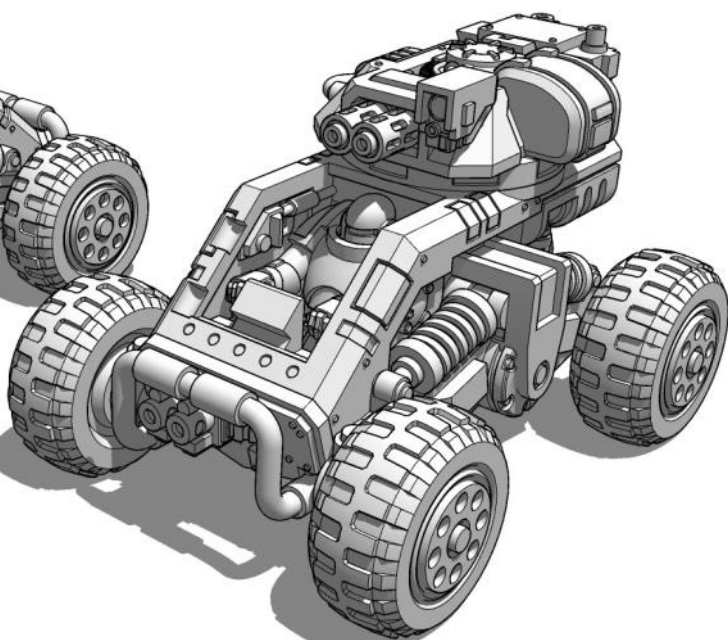
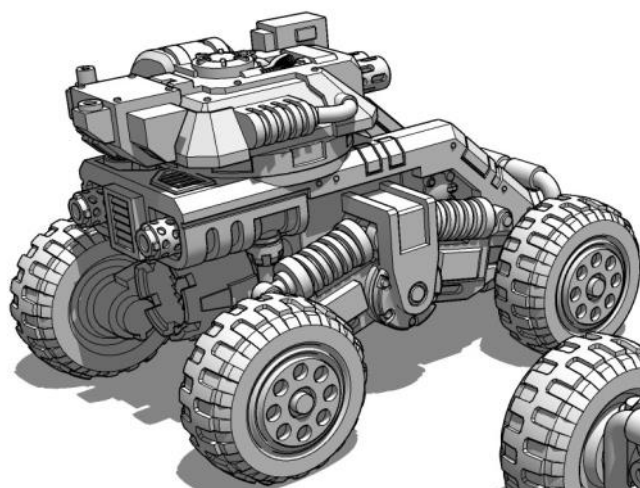
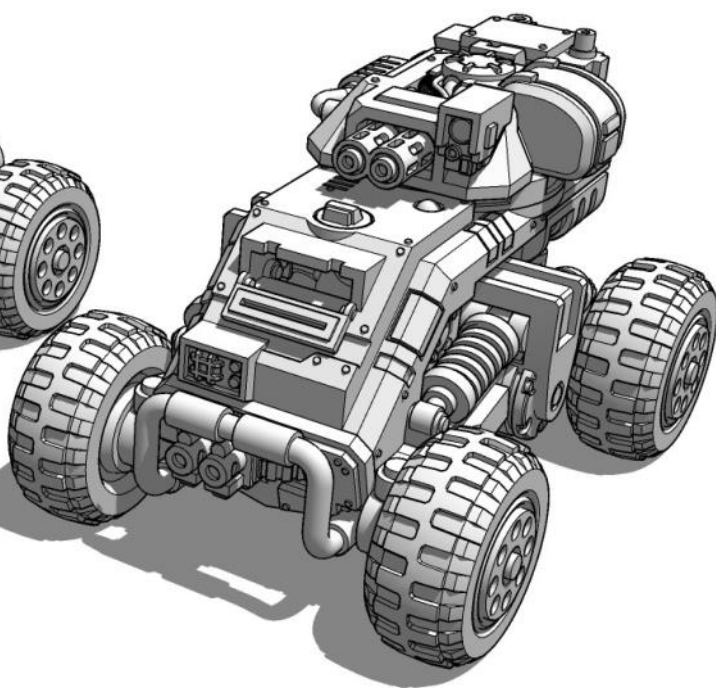
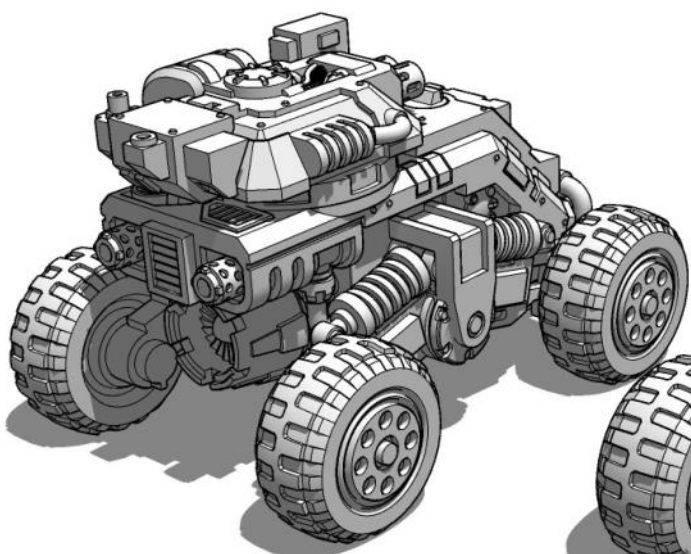
ATVTurretMini



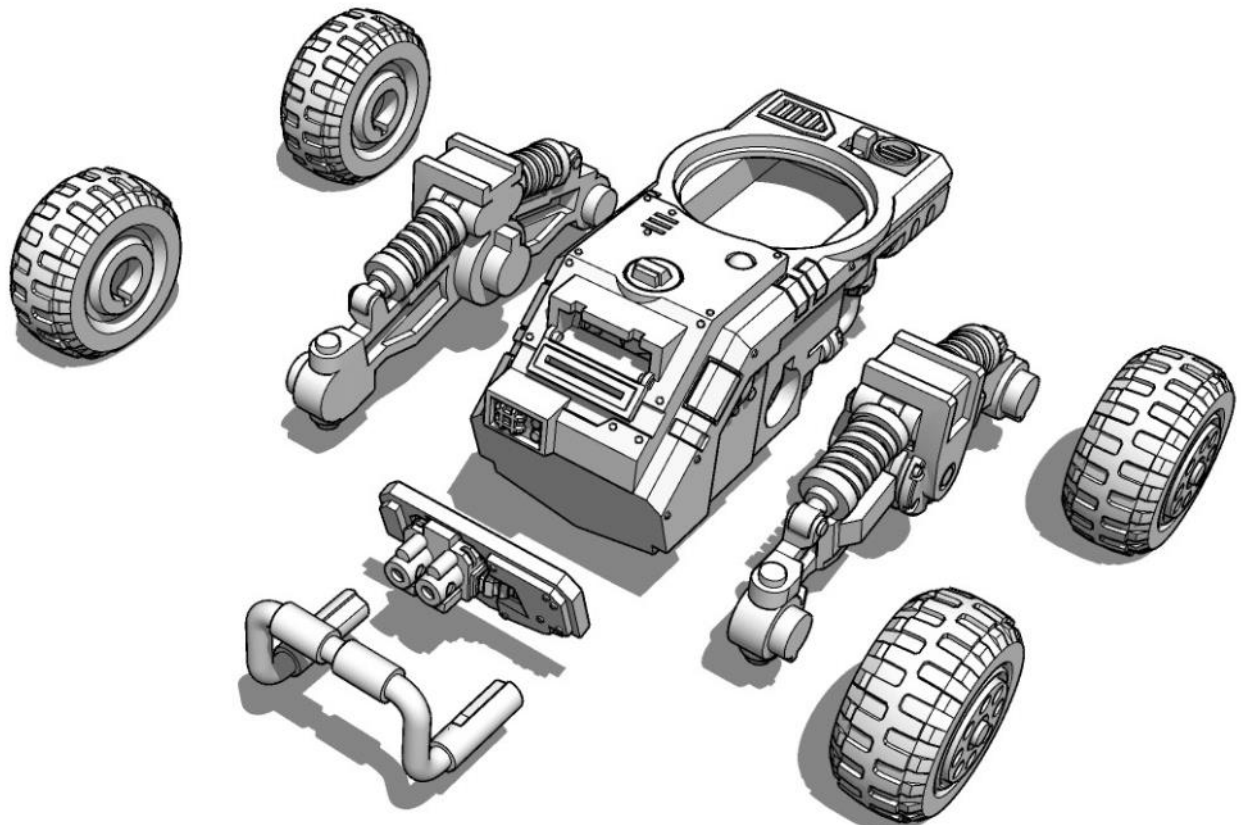
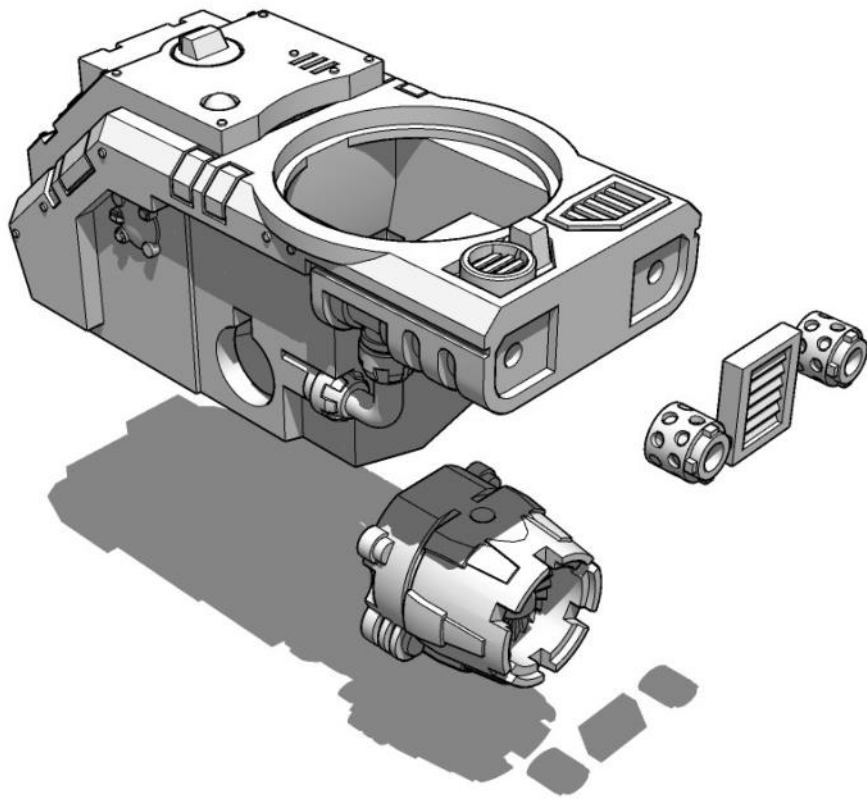
ATVgattling

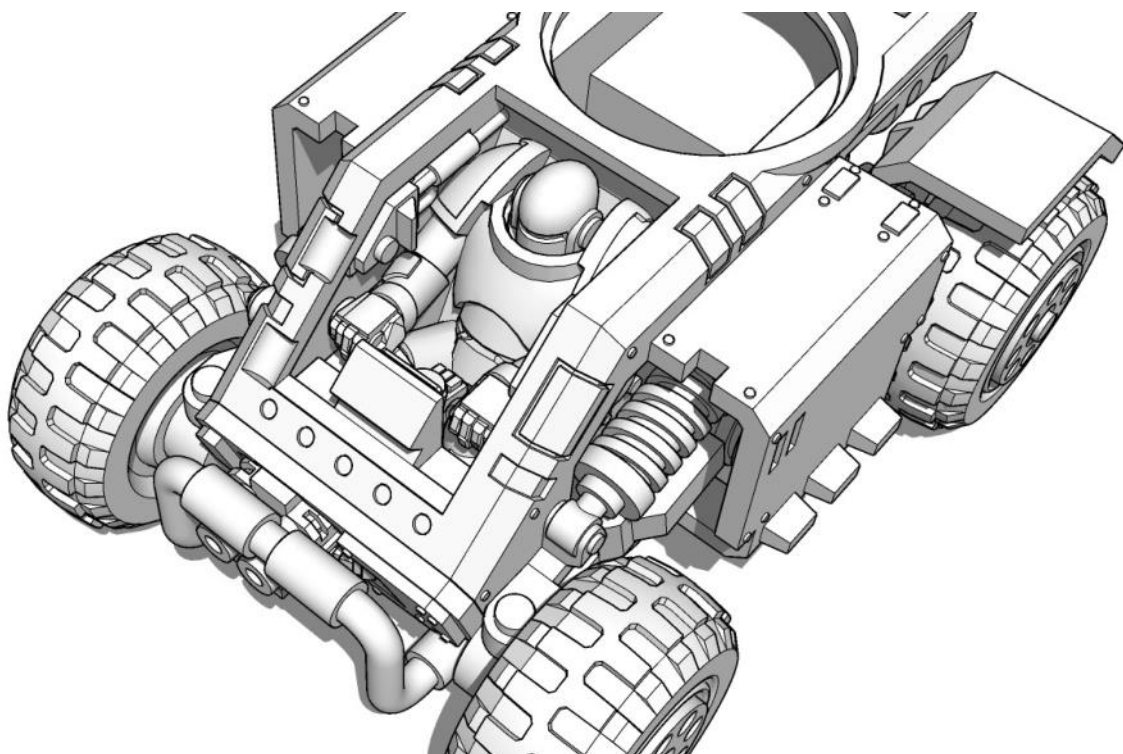
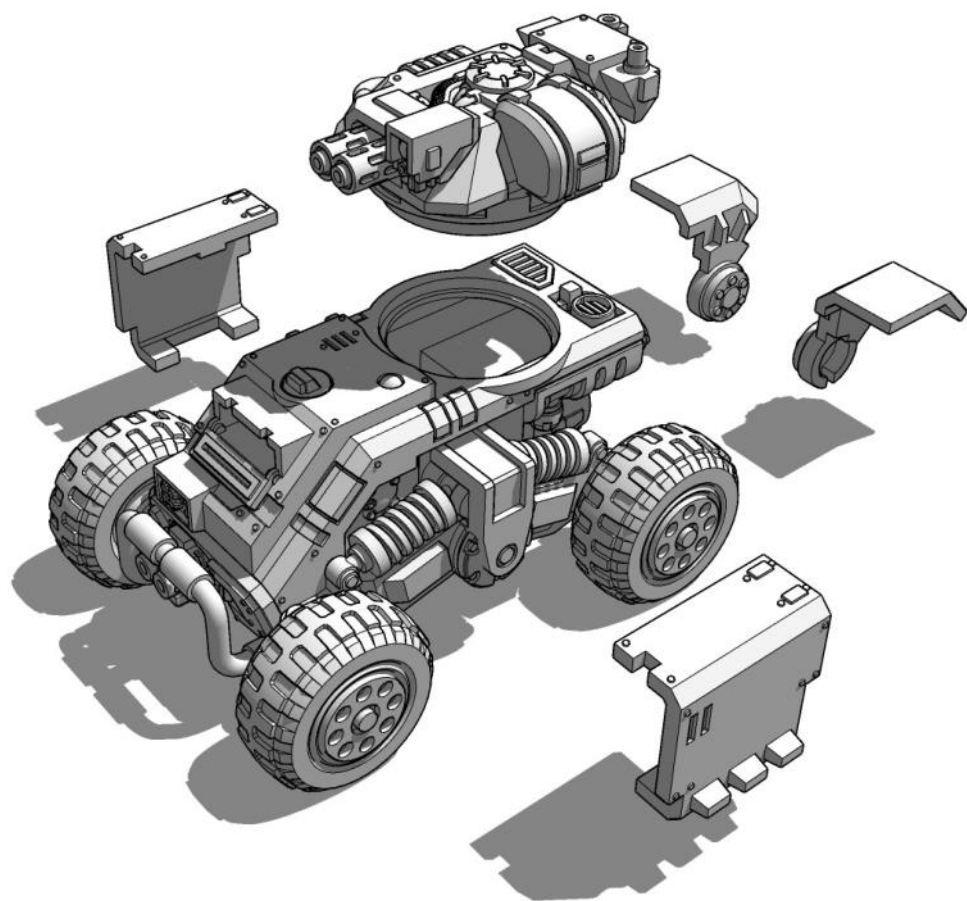
Your Fox ATV can be assembled in a few different ways
and combinations.



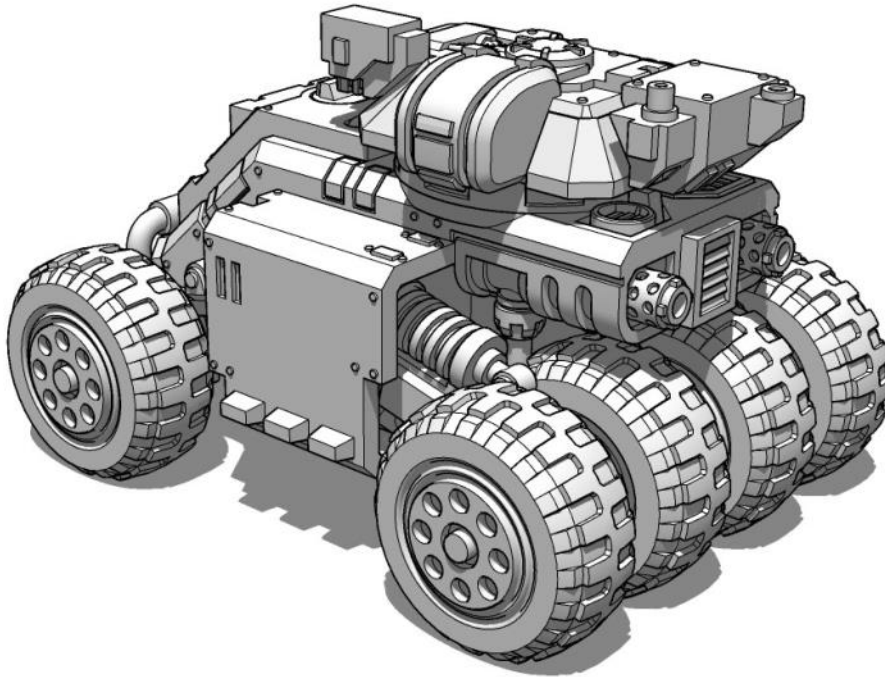


Assembly





You can even do
this.....



But you will of course have to print more
wheels and trim these bits off...

