

NOTE: This model contains many accessory parts which can be fixed as you please. You don't need to use all of them.

INSTRUCTIONS

Central Processing

Preparation

Once you clear some table space you will need a hobby knife and glue (PVA, wood glue, hobby glue) and a file or small piece of sandpaper to be used for cleaning up any tiny imperfections.

It's a good idea to familiarise yourself with how the pieces fit together before gluing.

Getting Started

I. Parts should remove easily from the board by pressing through and popping them out. It's a good idea to cut through the tiny joins first though, and some parts (particularly smaller, more detailed parts) may need more careful persuasion.

II. Use a file or sand paper last to completely remove any tabs that might remain.

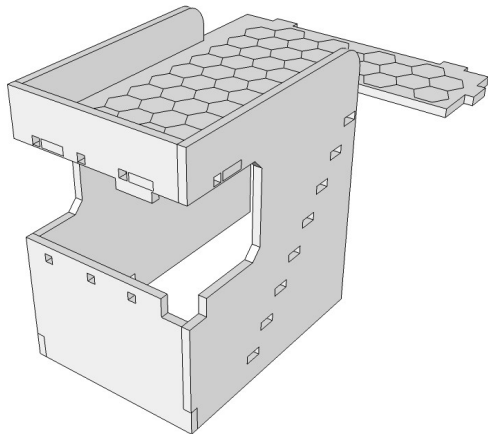
III. Parts may be a very tight fit, slight trimming or sanding of parts may be needed for ease of assembly.

Construction

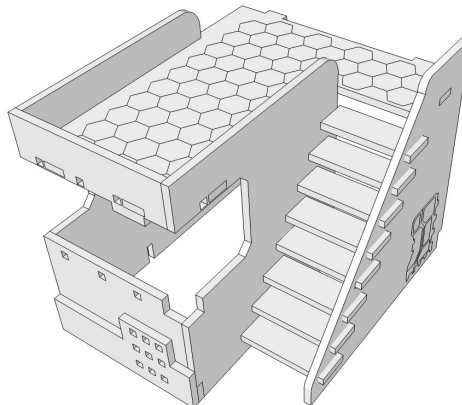
Slot the parts together as shown by the pictures below, applying glue wherever there is a connection.

Allow the model to completely dry before painting it. This is a complex kit with many small parts. Allowing each section to dry thoroughly before heading to the next is strongly recommended.

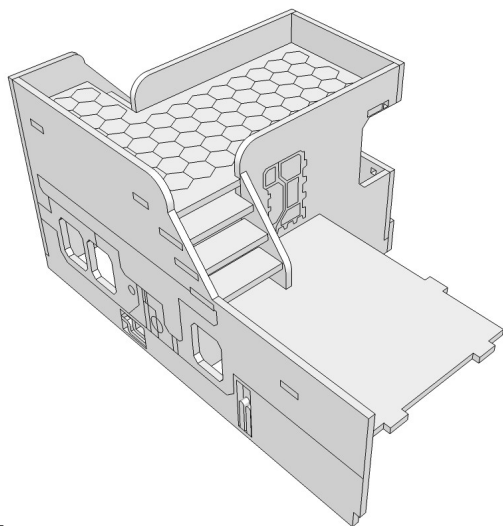
step1



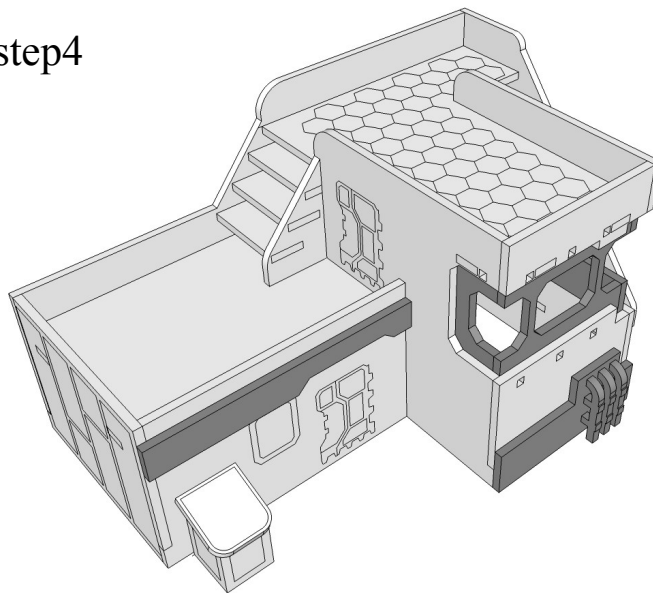
step2



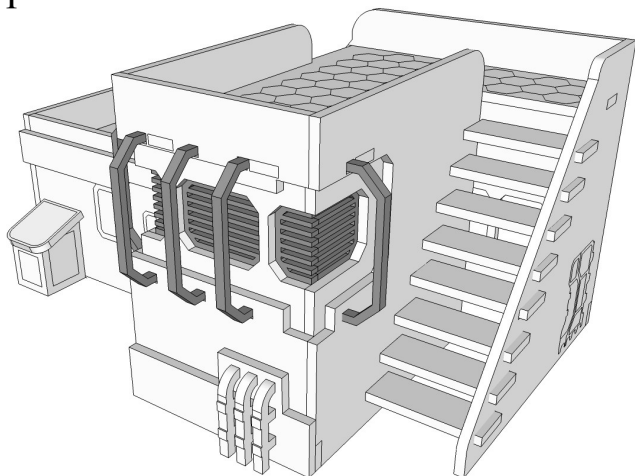
step3



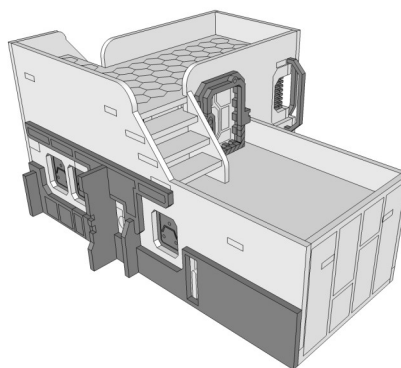
step4



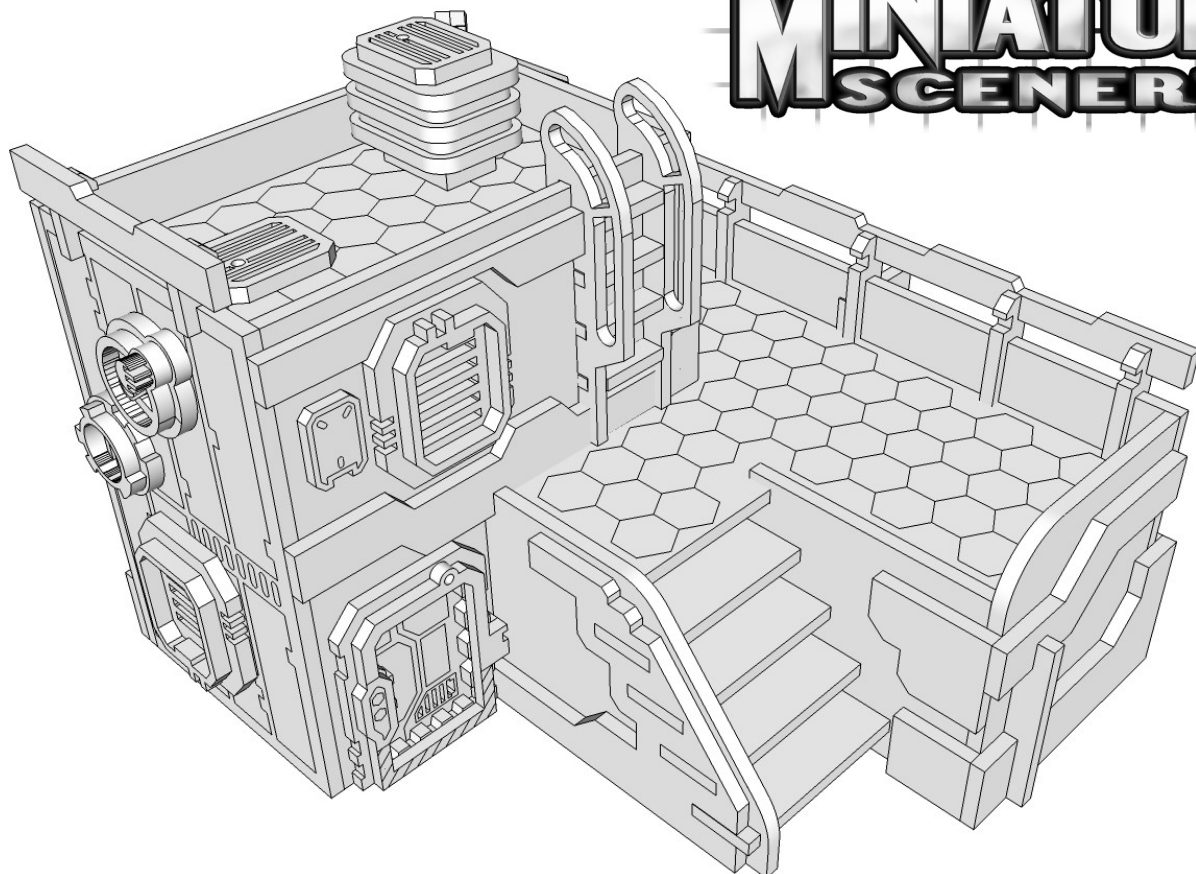
step5



step6



This completes the basic assembly of your building. The many extras included in your kit can be affixed to your model as you choose. Have fun, and remember you don't have to use all of them.



SCI-FI BUILDING #1

