

# MINIATURE SCENERY



Model supplied unpainted and unassembled

## SANCTUARY OF SOULS

MINIATURE SCENERY MODELS ARE DESIGNED FOR 25MM (1 INCH) BASE MINIATURES, IDEAL FOR GAMERS AND COLLECTORS.

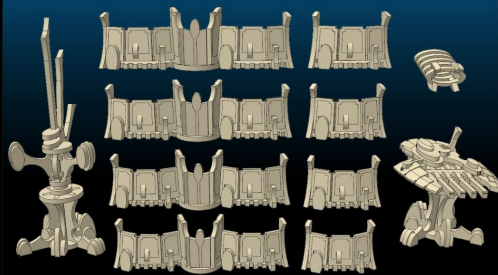
AT [WWW.MINIATURESCENERY.COM](http://WWW.MINIATURESCENERY.COM) WE PROVIDE DETAILED AND EASY TO FOLLOW ILLUSTRATED GUIDES FOR PAINTING TERRAIN.

THIS TERRAIN PIECE IS A MODULAR WALL THAT CAN BE ARRANGED IN VARIOUS SHAPES TO SUIT ANY BATTLEFIELD.

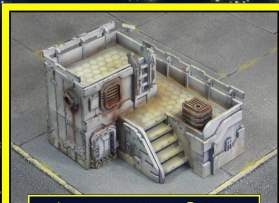
ADDITIONAL COMMS SPIRE AND SENTRY GUN (WITH TWO DIFFERENT WEAPONS) INCLUDED.

- 4 X LONG WALLS
- 4 X SHORT WALLS

ALL INSTRUCTIONS AVAILABLE ONLINE AT [HTTP://WWW.MINIATURESCENERY.COM](http://WWW.MINIATURESCENERY.COM)



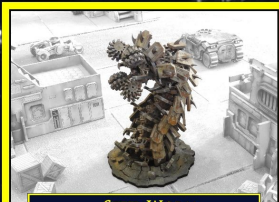
ENCLOSED COMPONENTS AFTER ASSEMBLY



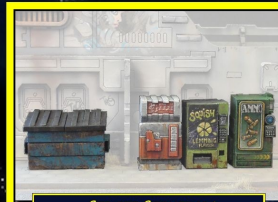
ADMINISTRATION BLOCK



STEALTH TRV



STEEL WORM



STREET SCENERY 1



## INSTRUCTIONS

### Elven Sanctuary of Souls

#### Preparation

Once you clear some table space you will need a hobby knife and glue (PVA, wood glue, hobby glue) and a file or small piece of sandpaper to be used for cleaning up any tiny imperfections.

It's a good idea to familiarise yourself with how the pieces fit together before gluing.

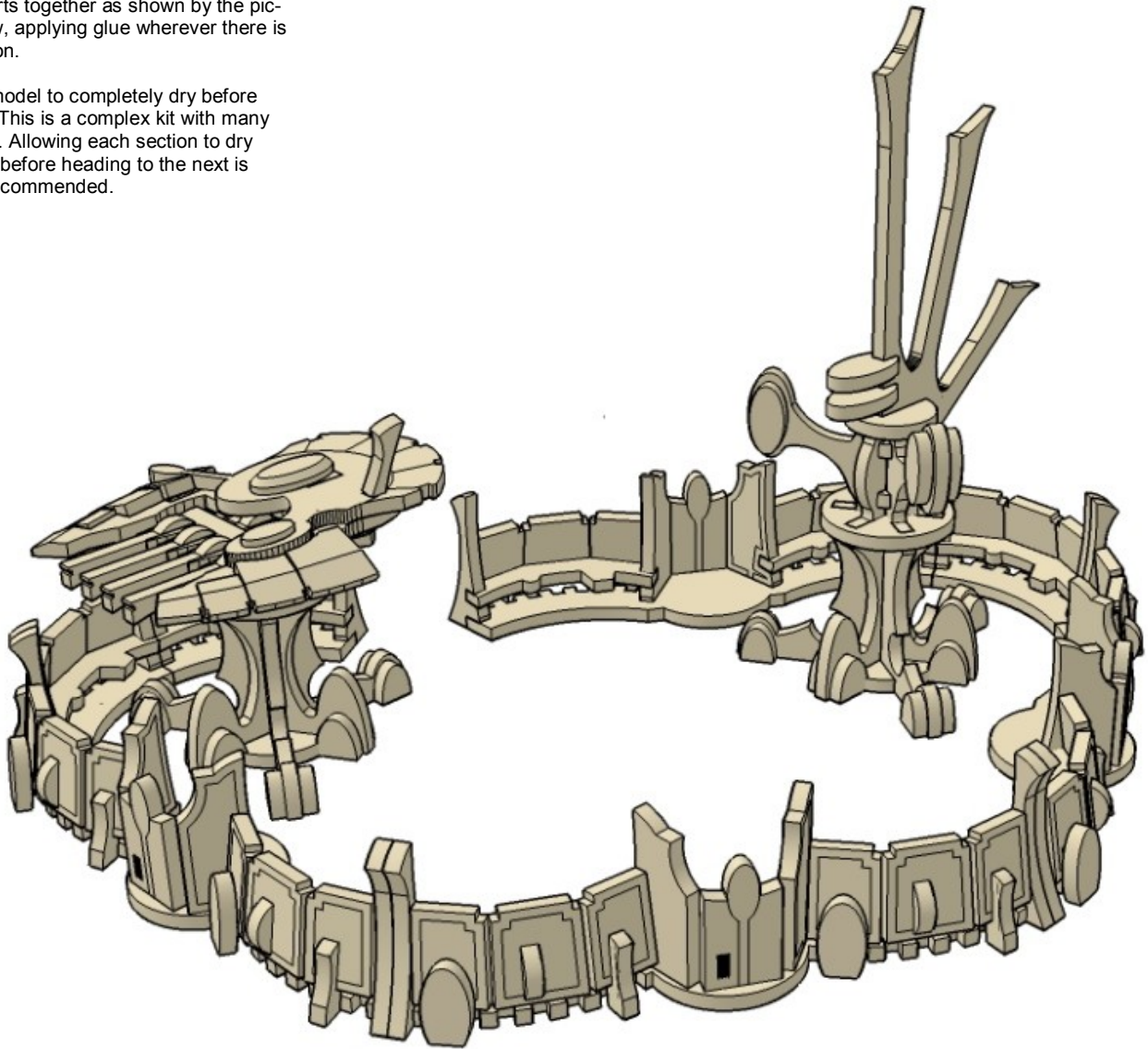
#### Construction

Slot the parts together as shown by the pictures below, applying glue wherever there is a connection.

Allow the model to completely dry before painting it. This is a complex kit with many small parts. Allowing each section to dry thoroughly before heading to the next is strongly recommended.

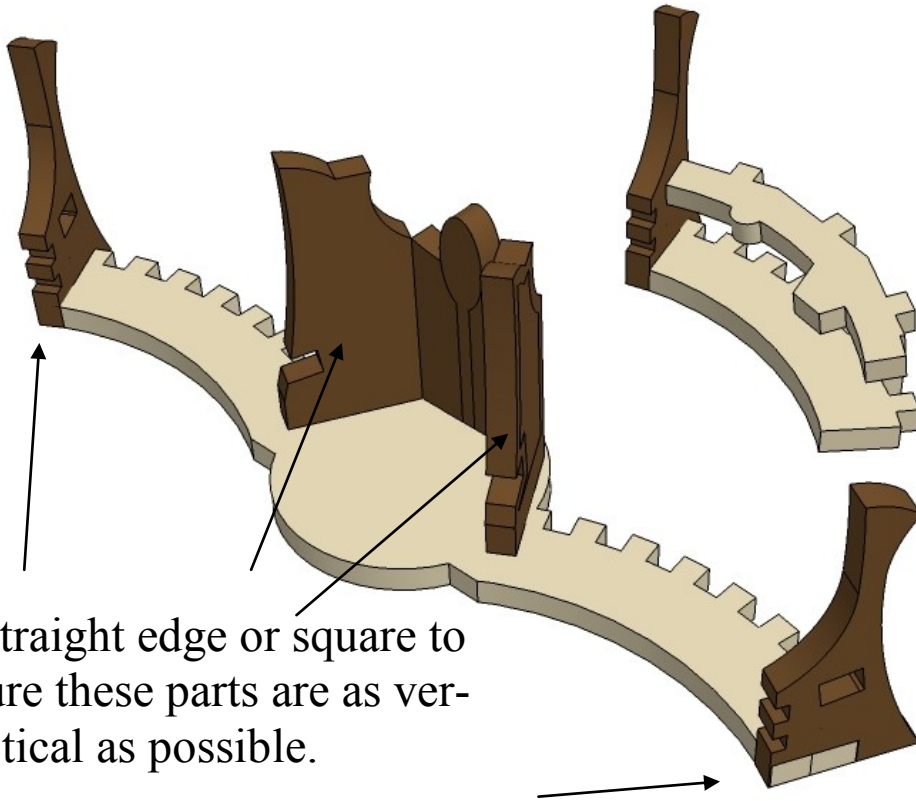
#### Getting Started

- I. Parts should remove easily from the board by pressing through and popping them out. It's a good idea to cut through the tiny joins first though, and some parts (particularly smaller, more detailed parts) may need more careful persuasion.
- II. Use a file or sand paper last to completely remove the tabs that might remain.
- III. Parts may be a very tight fit, slight trimming or sanding of parts may be needed for ease of assembly.



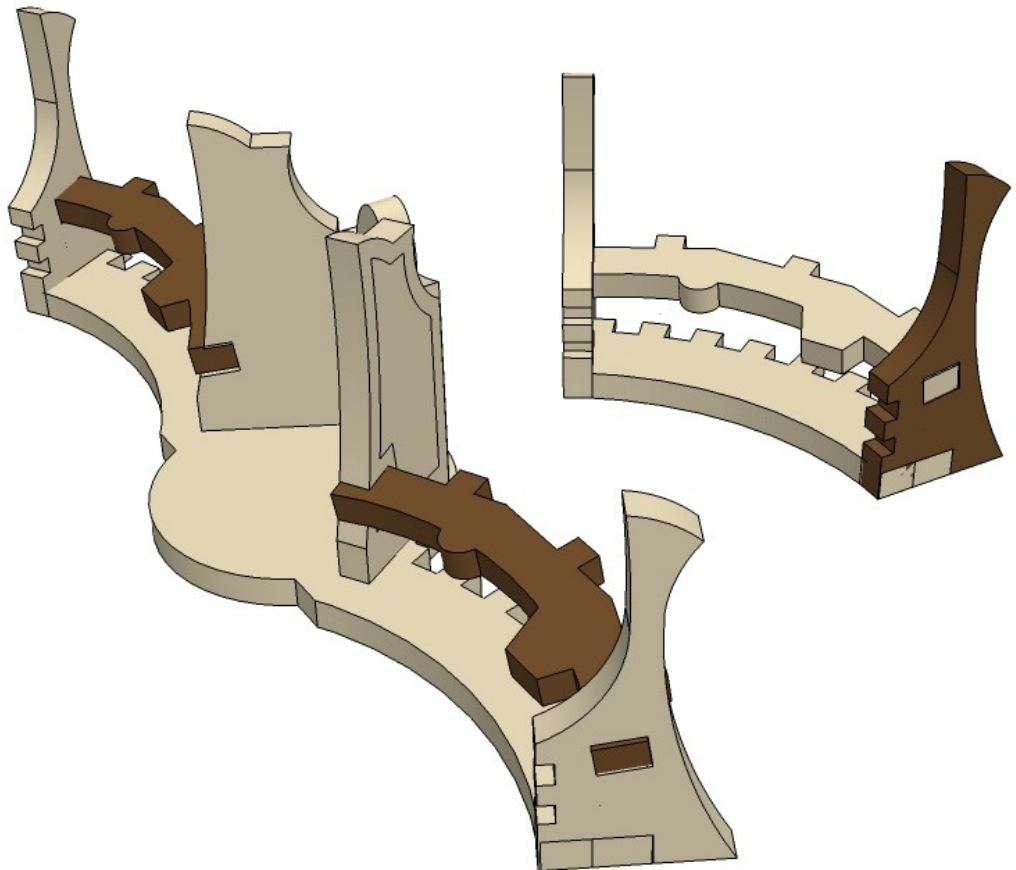
Some parts of this kit are very fine, or have engraving very close to edges. Make sure you cut through any tabs carefully with a hobby knife first to avoid damage.

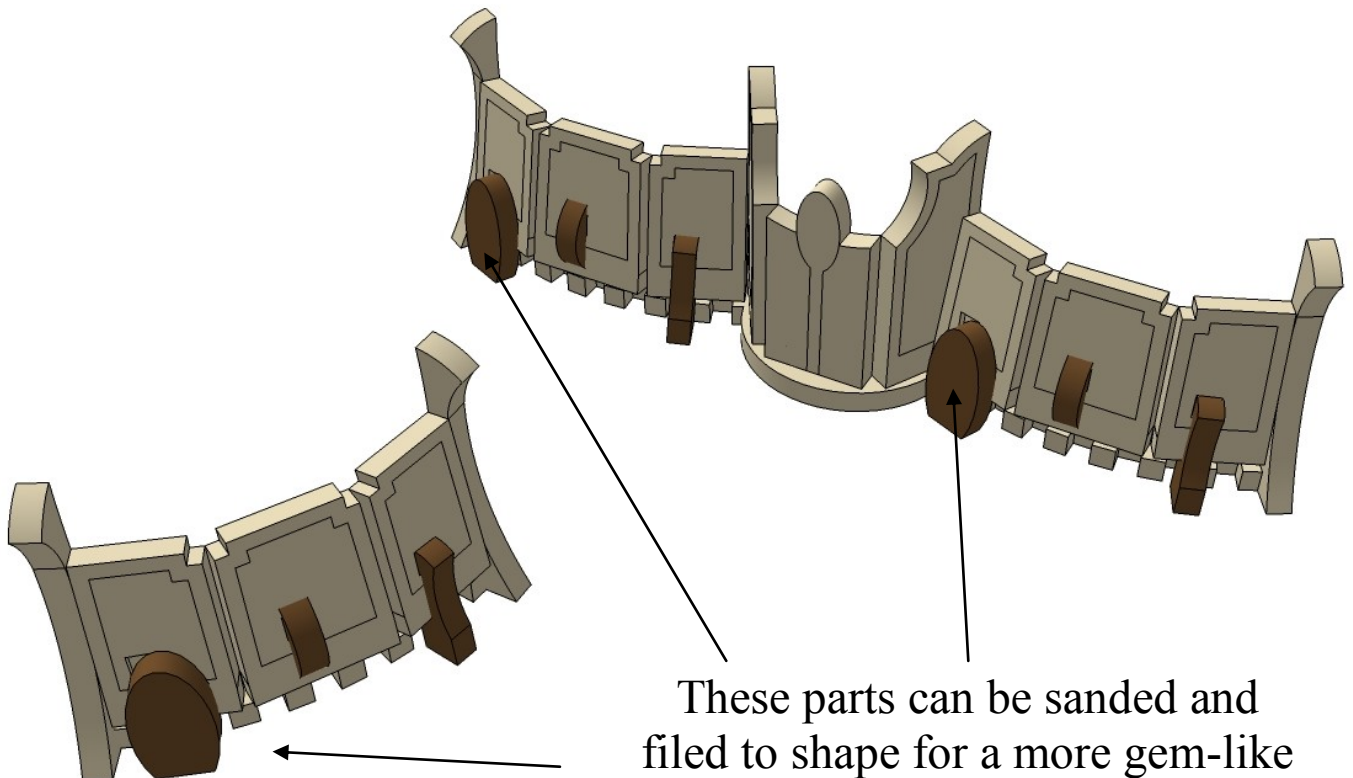
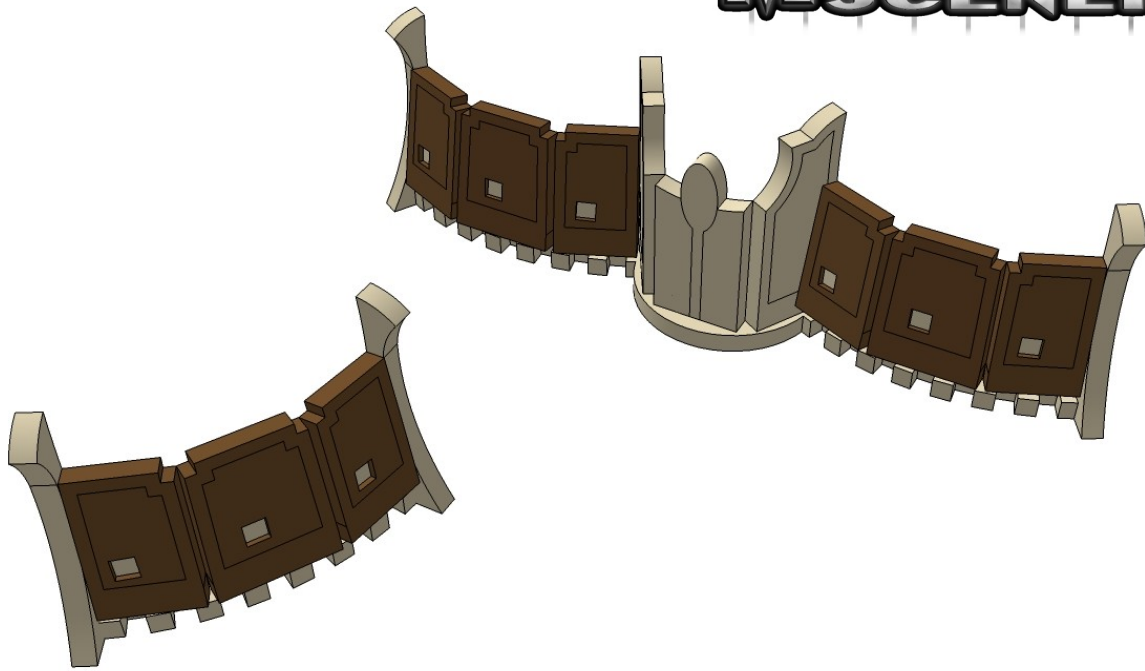




Use a Straight edge or square to  
make sure these parts are as ver-  
tical as possible.

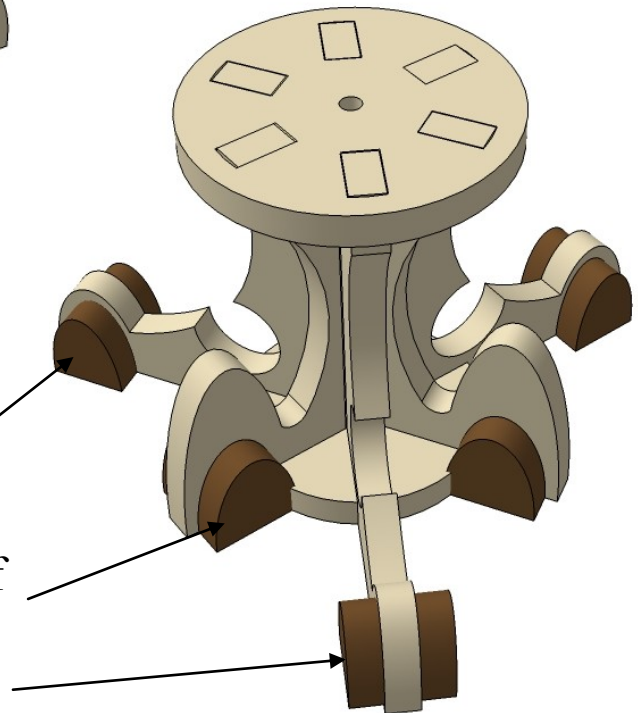
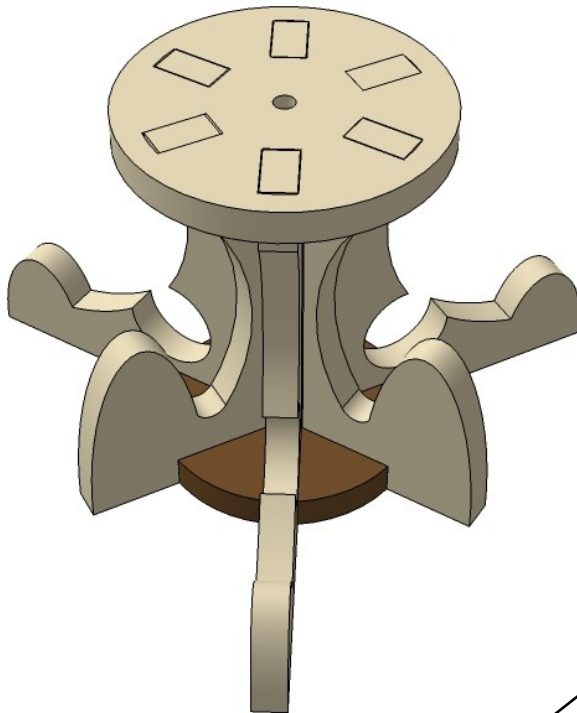
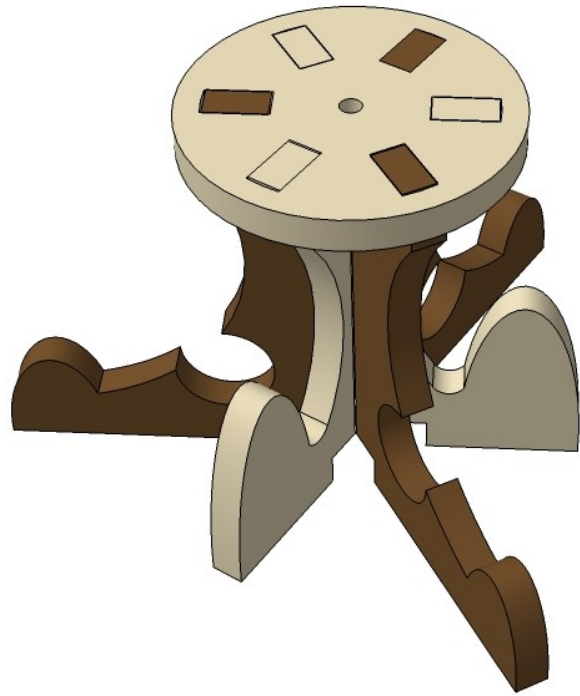
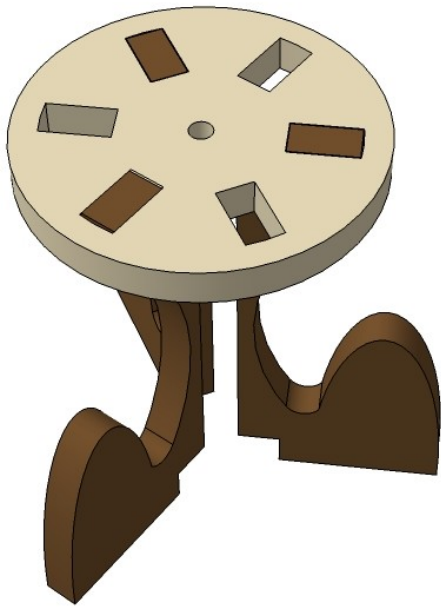
(it will make for a better model  
later on. Trust me).





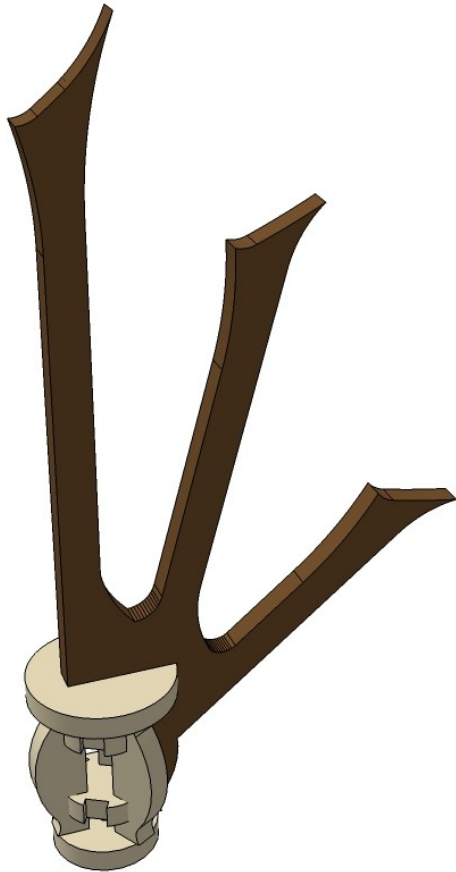
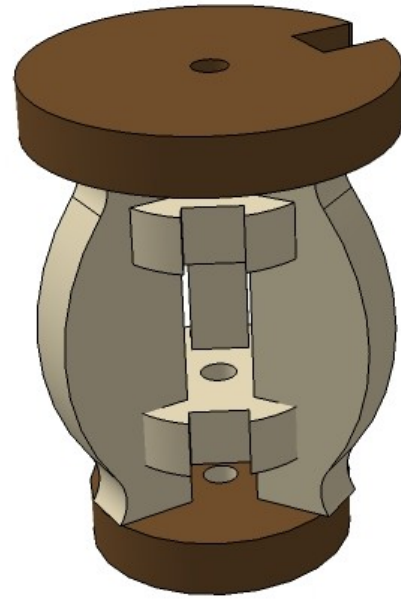
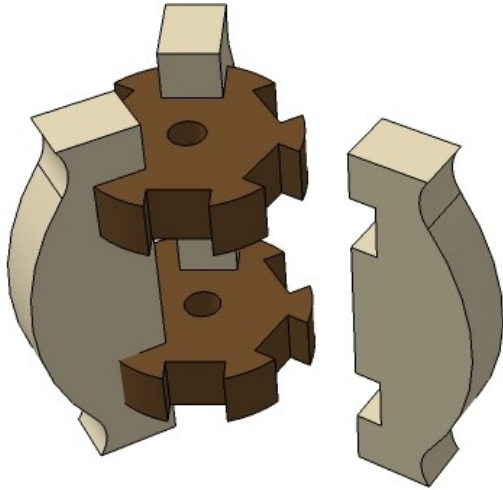
These parts can be sanded and filed to shape for a more gem-like appearance.

It's also not important where you put them. I've been fairly random on the test model.

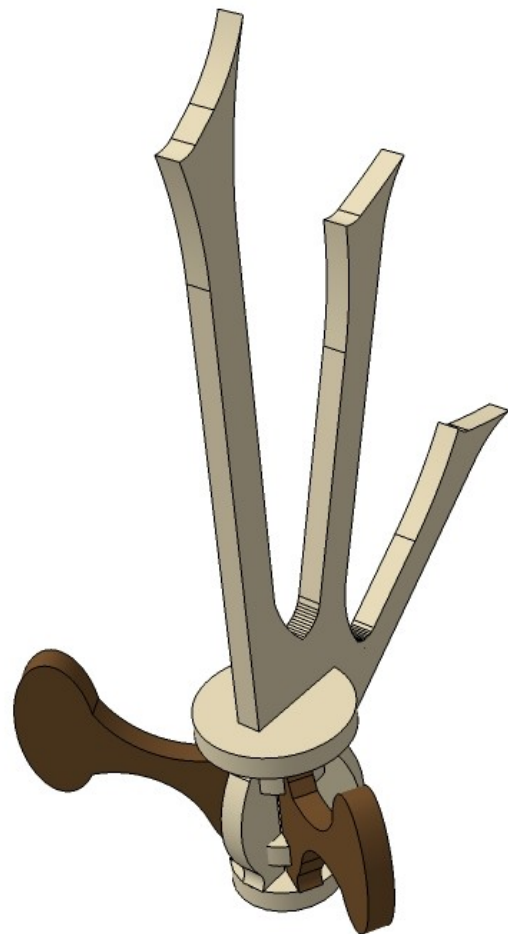


Once again, these parts way cooler if  
you sand them to shape a bit.

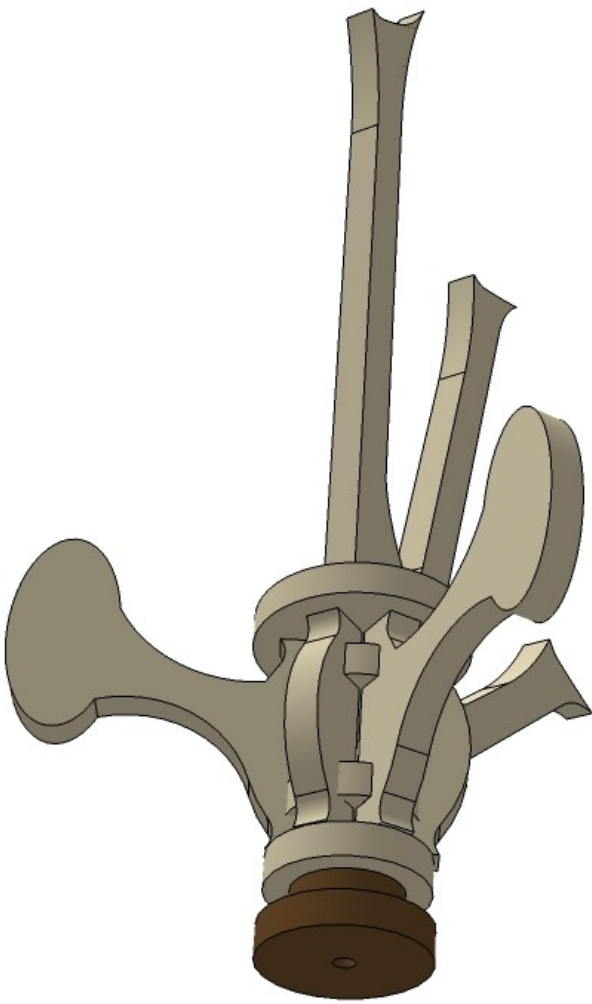
Just sayin'.



The central hole can be used with a toothpick to help align the assembly.

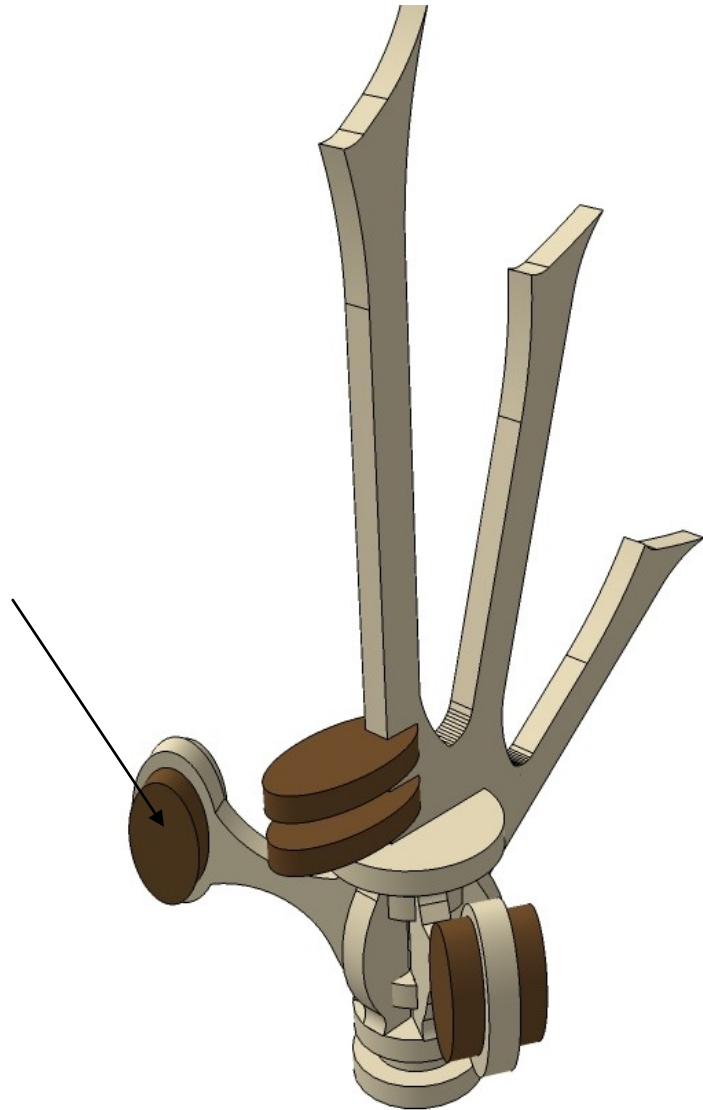


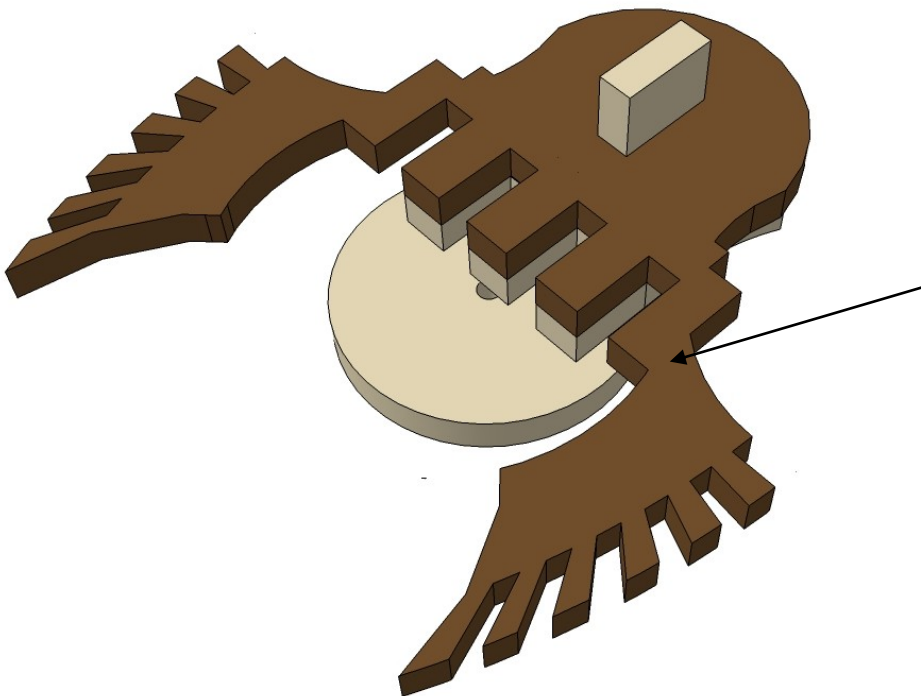
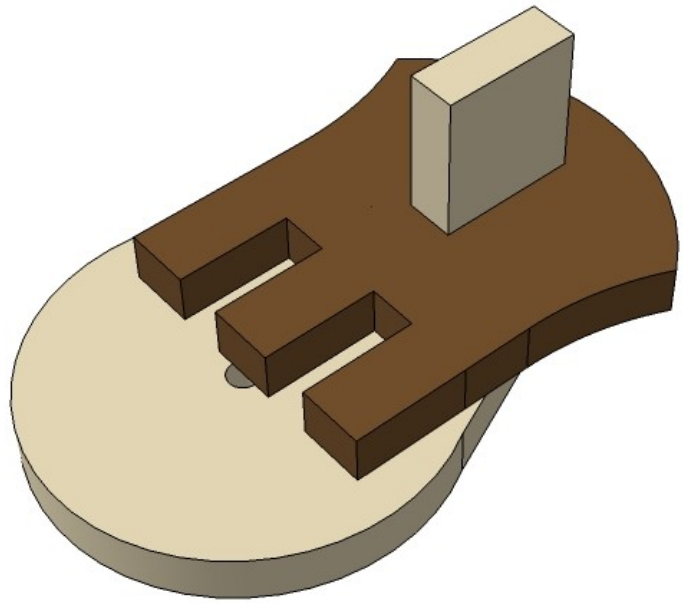
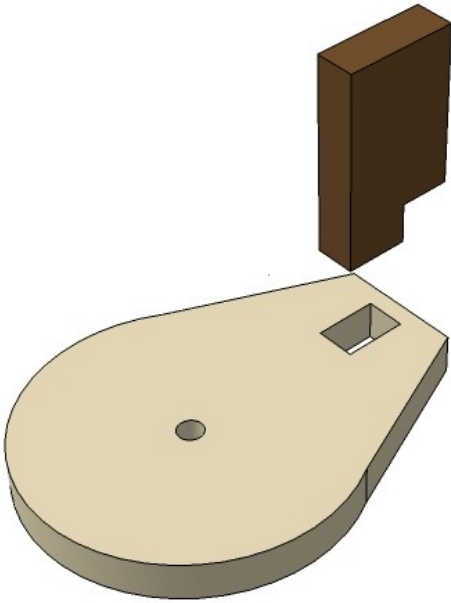




Sanding to shape.

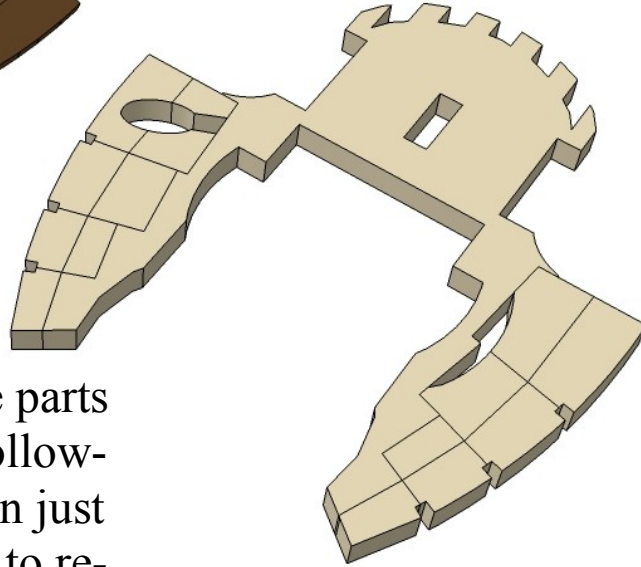
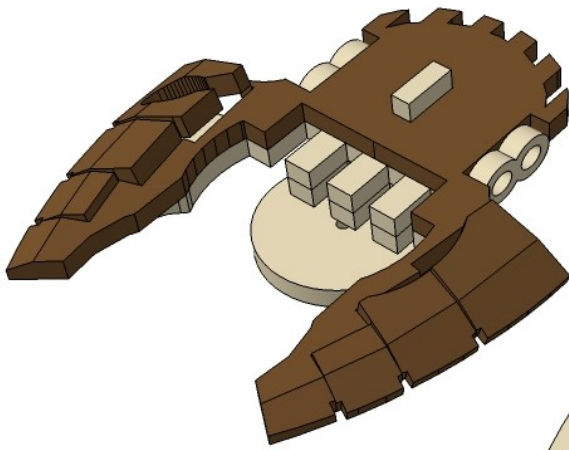
You know the drill.





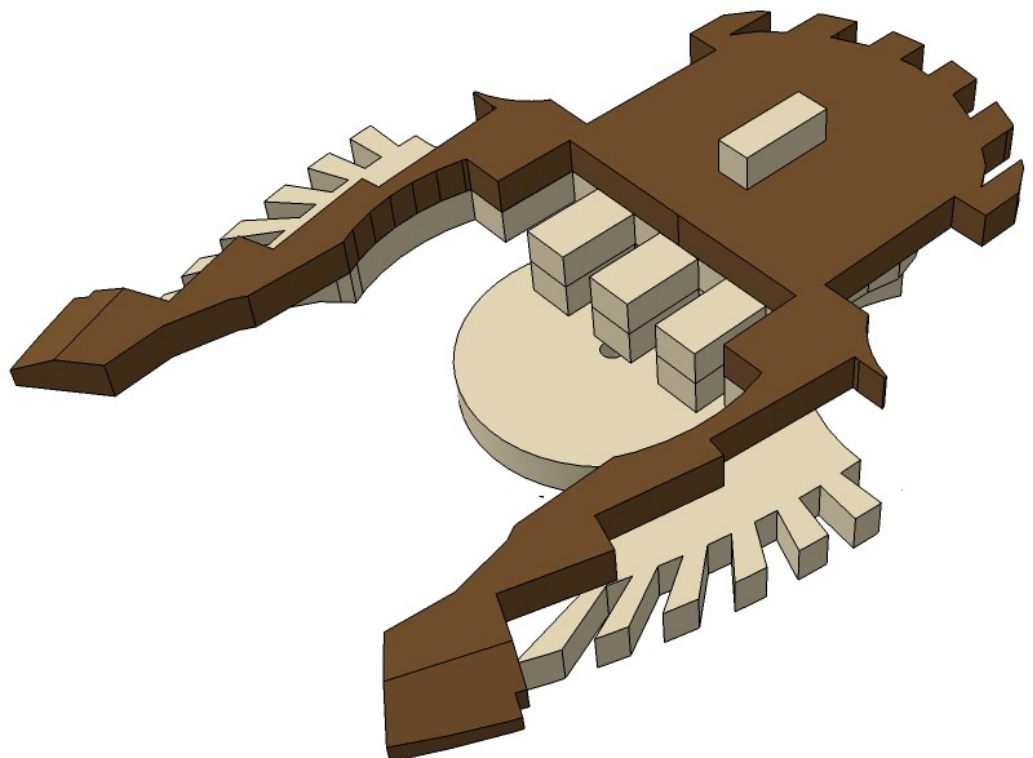
CAREFUL.  
Quite weak here.





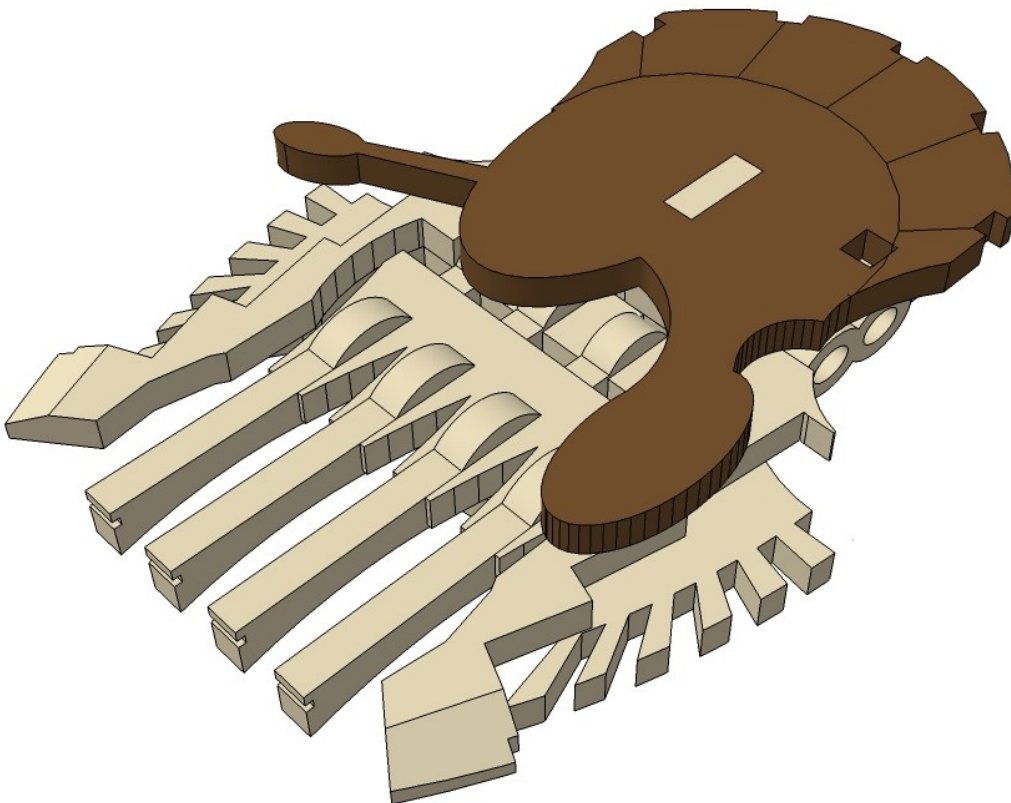
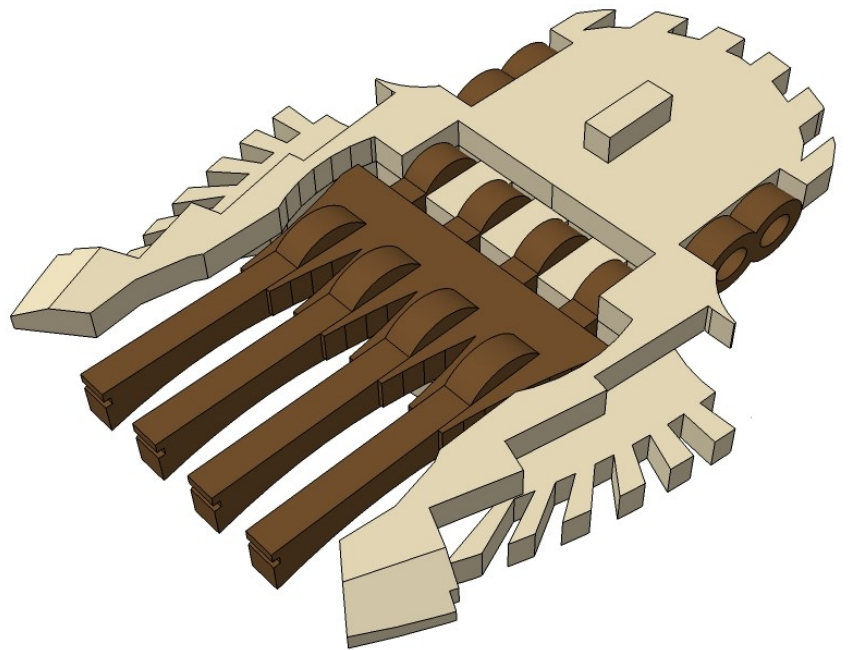
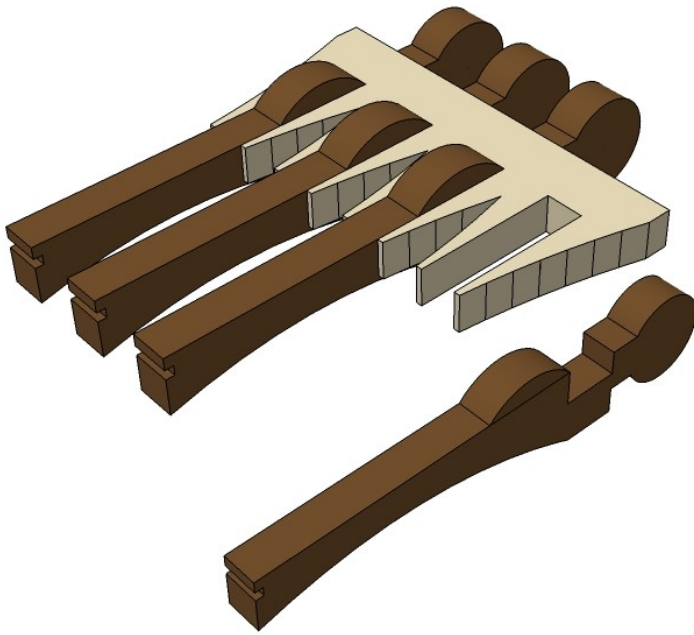
This part is supplied with the parts lightly joined so that if the following step is a bit scary, you can just glue some paper on the back to reinforce it and leave well alone.

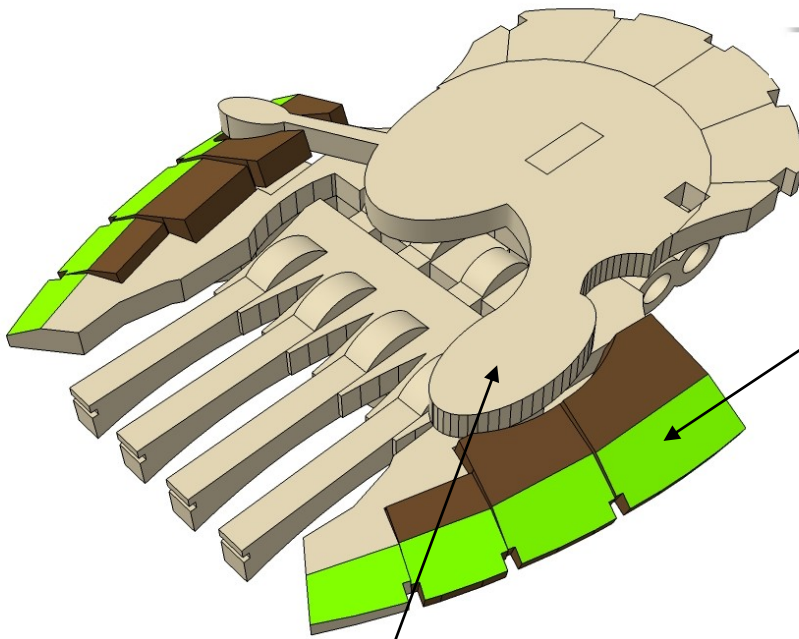
It will, of course, look WAY niftier if you remove the pieces and re-glue them at an angle and sand/file the edges (happy green colour) as shown.



CNC WORKSHOP

# MINIATURE SCENERY

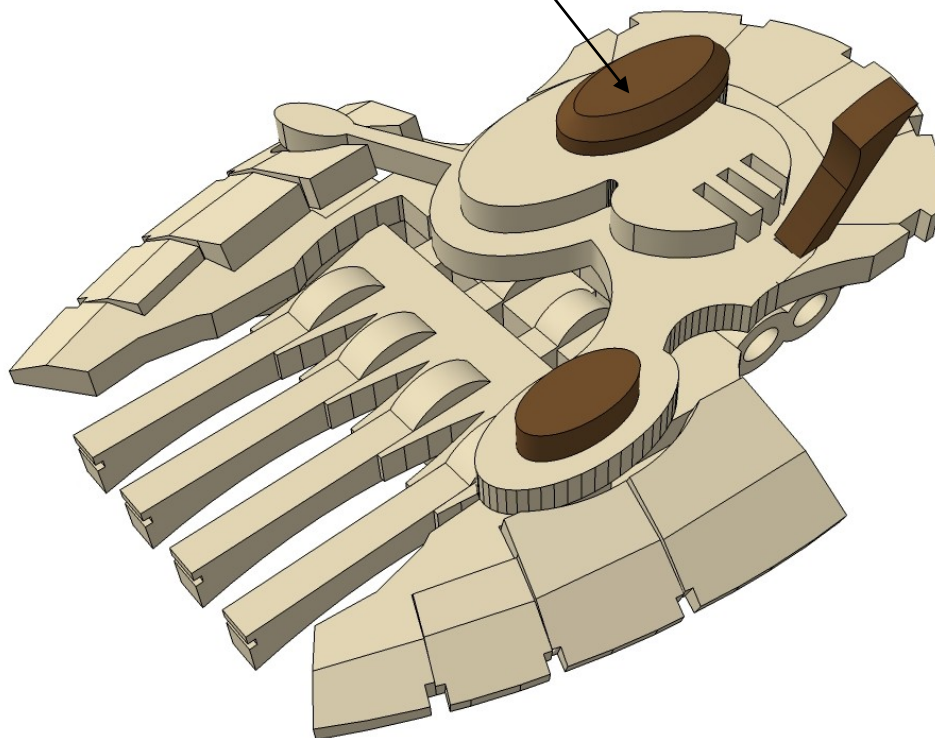
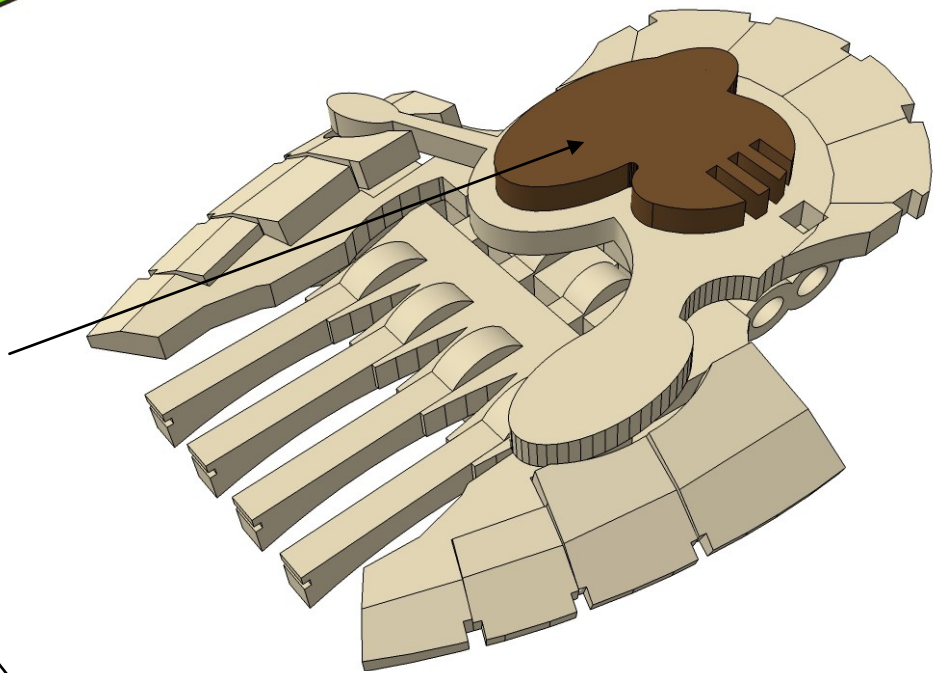




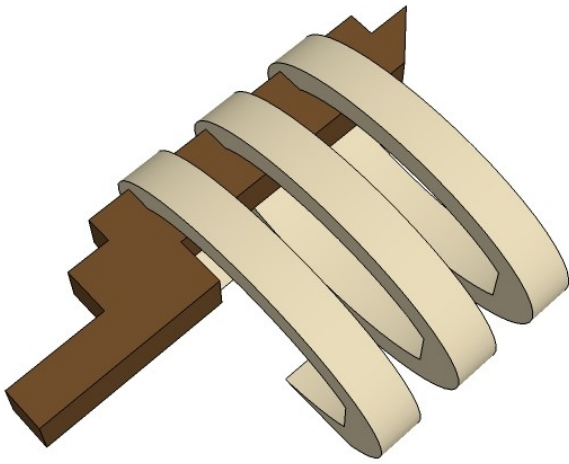
The Happy green bits  
mentioned earlier.

Again with the sanding.

Really, it WILL make your  
model look much better.







Alternate Gun.

(can be left swappable with the other weapon. It's a bit of a wiggle, but it does go in without glue).

