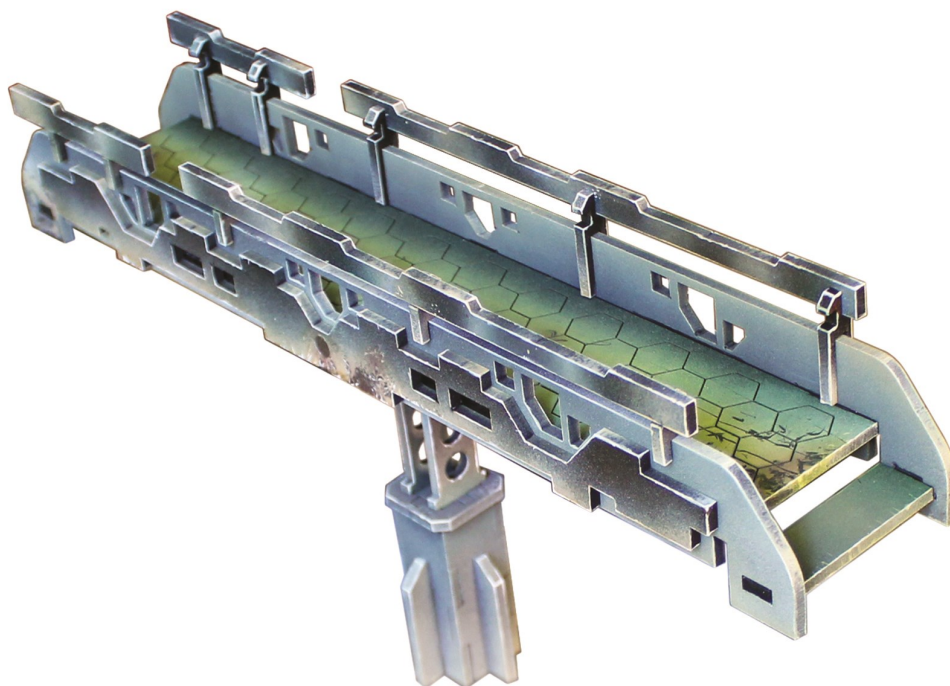
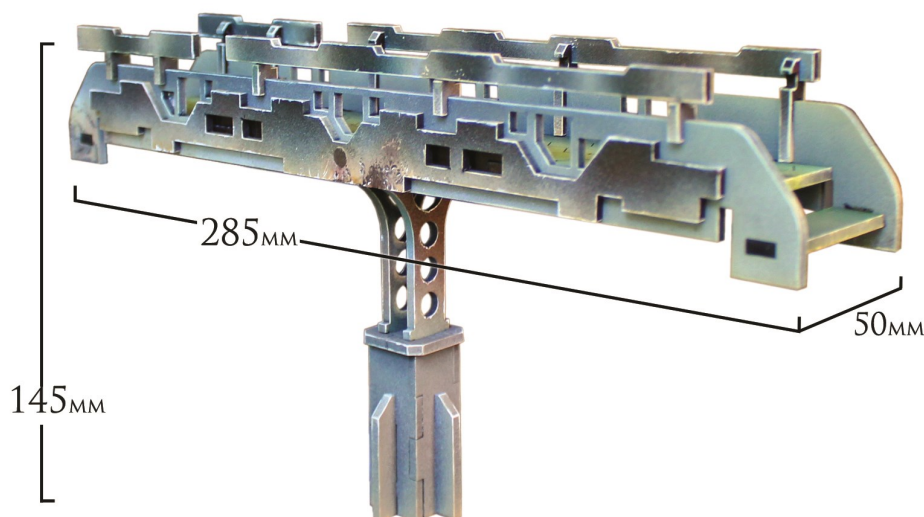


MINIATURE SCENERY

EXTRA LONG BRIDGE



THIS LONG BRIDGE CAN BE USED TO CONNECT DISTANT STRUCTURES
AND CREATE DYNAMIC SCIFI BATTLEFIELDS



MINIATURE SCENERY IS DESIGNED FOR 28MM MINIATURES,
IDEAL FOR GAMERS AND COLLECTORS



FOR DETAILED, EASY TO FOLLOW INSTRUCTIONS VISIT

WWW.MINIATURESCENERY.COM



Contents may contain small parts. Not suitable for children under 6 years old. The exclusive copyright on the model designs and components within this case is the property of Miniature Scenery, 2016. All rights reserved.

MINIATURE SCENERY

INSTRUCTIONS

LONG BRIDGE

PREPARATION

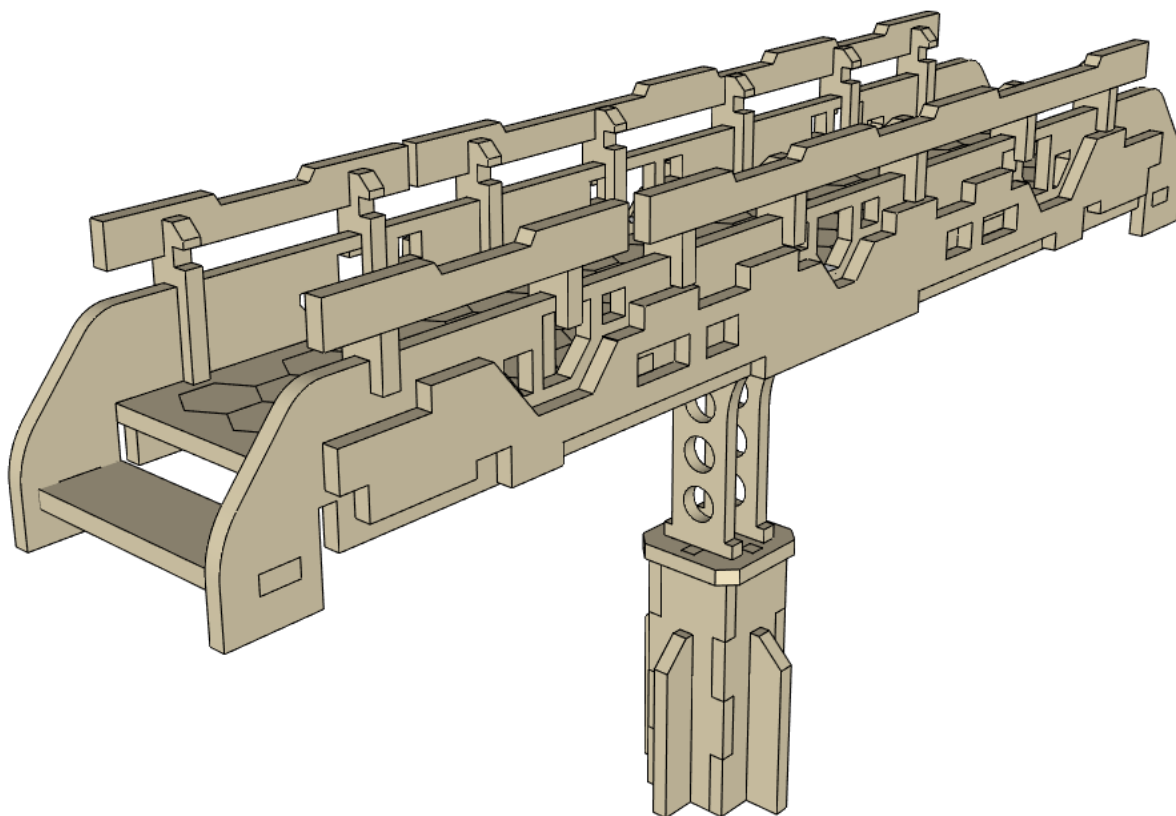
You will need:

- Cutting mat or something to protect your table.
- PVA/Wood glue or superglue if you prefer.
- Small file or sand paper.
- Small blade / hobby knife



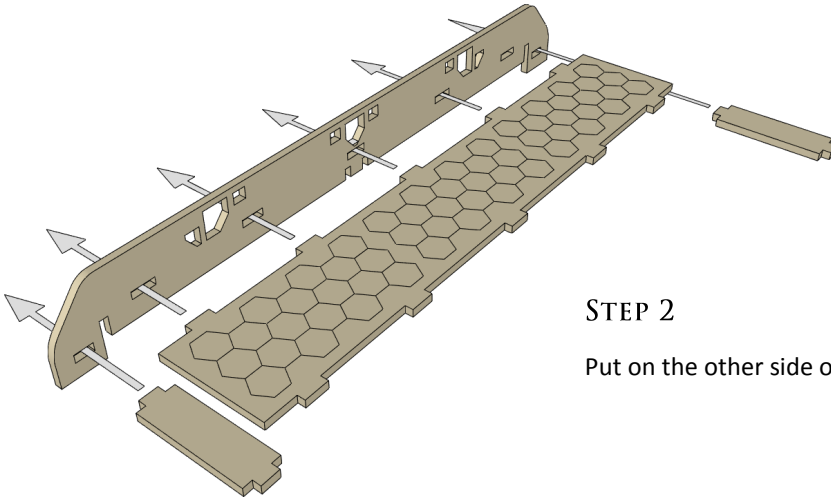
GENERAL PROCESS

- Clear plenty of table space, you will need it.
- Parts should remove easily from the board by pressing through and popping them out. It's a good idea to cut through the tiny joins first though, and some parts (particularly smaller, more detailed parts) may need more careful persuasion.
- Use file or sand paper to remove the small bur caused by the connection to the frame.
- It's a good idea to familiarise yourself with how the pieces fit together before gluing.
- Slot the parts together as shown by the pictures below, applying glue wherever there is a connection. (unless shown otherwise)
- Parts may be a very tight fit, slight trimming or sanding of parts may be needed for ease of assembly.



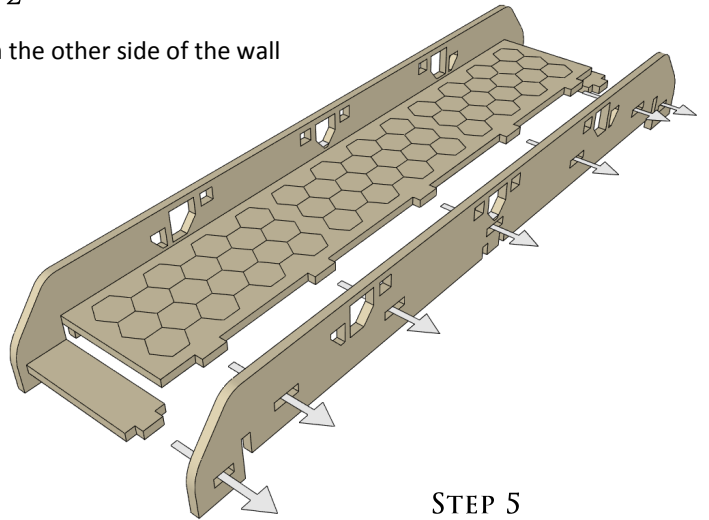
STEP 1

Insert floor and both steps into one side of the wall.



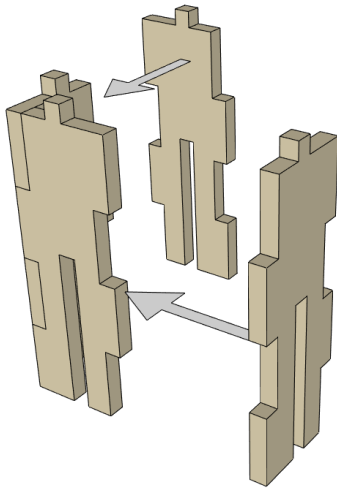
STEP 2

Put on the other side of the wall



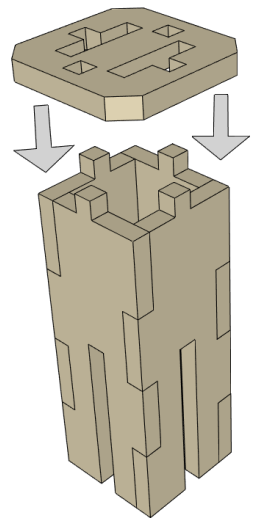
STEP 4

Construct base of pillar. All sides are the same.



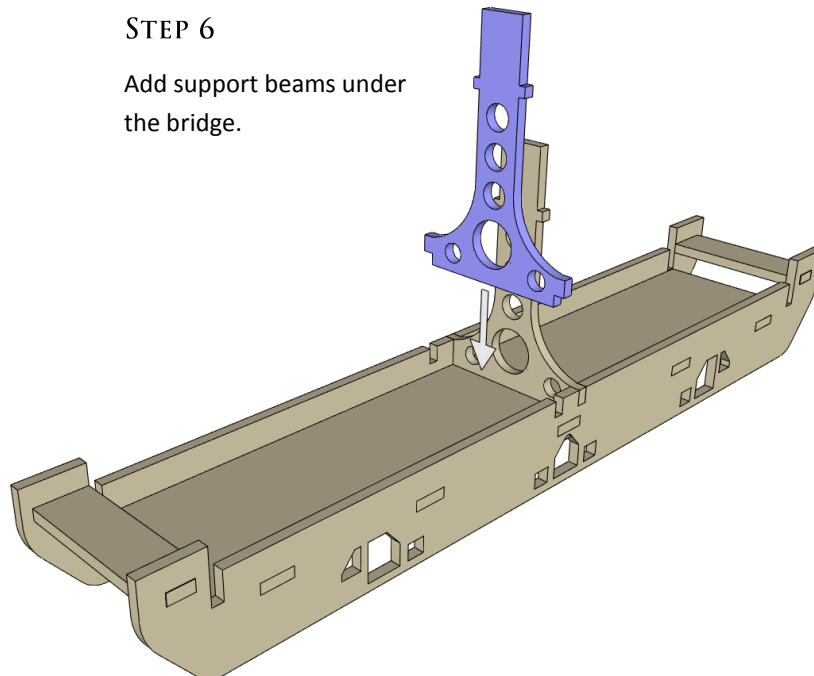
STEP 5

Attach pillar cap.



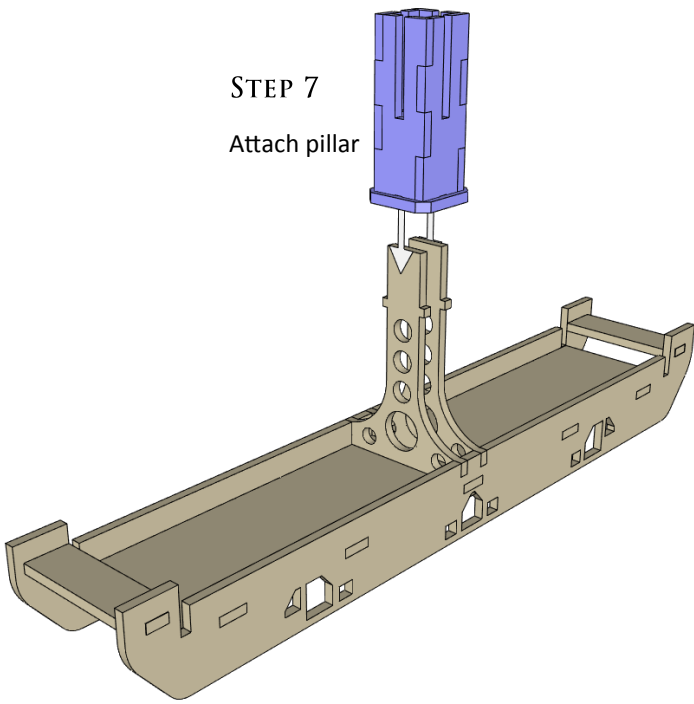
STEP 6

Add support beams under the bridge.



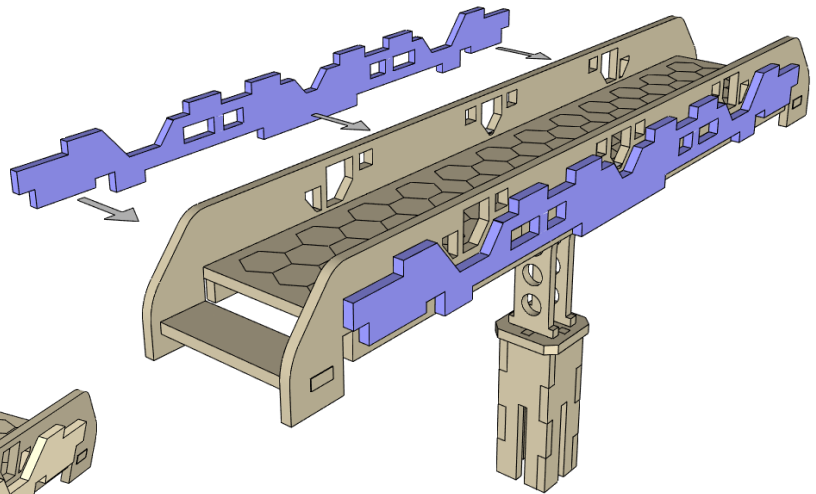
STEP 7

Attach pillar



STEP 7

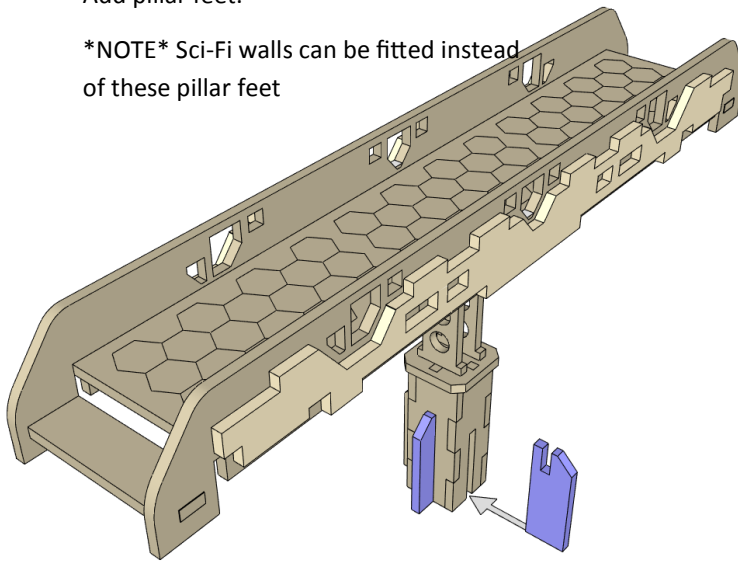
Add wall decorations



STEP 8

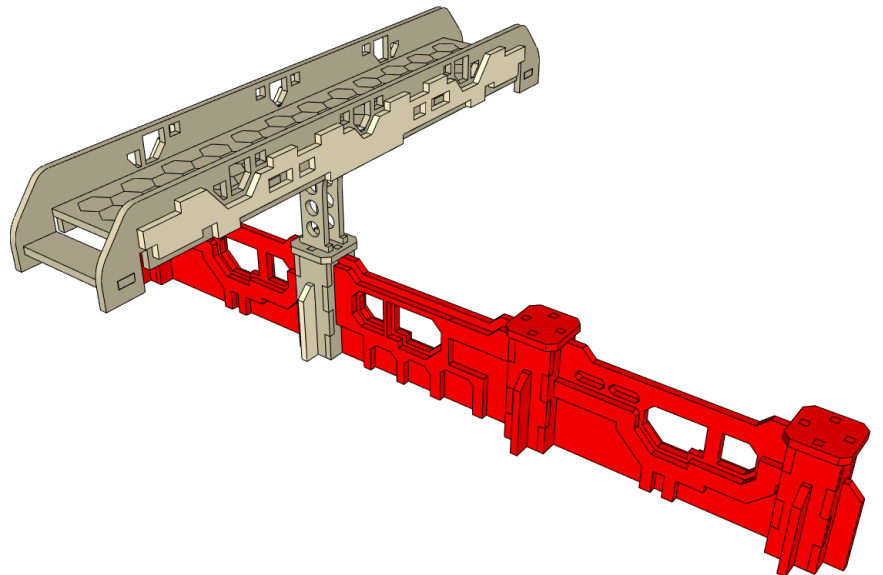
Add pillar feet.

NOTE Sci-Fi walls can be fitted instead of these pillar feet



OPTIONAL BUILD

Sci-Fi walls not included.

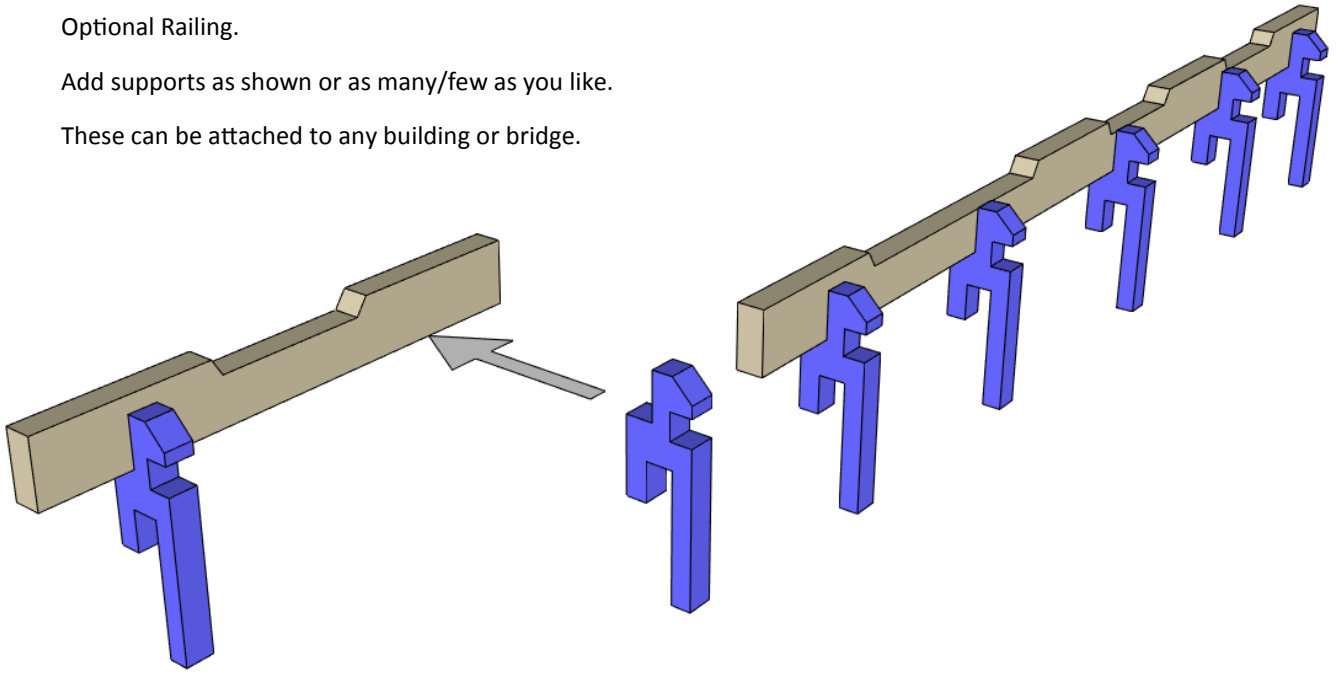


STEP 9

Optional Railing.

Add supports as shown or as many/few as you like.

These can be attached to any building or bridge.



DONE!!

