

MINIATURE SCENERY

INSTRUCTIONS RUNNERS WRECK DRIVE

PREPARATION

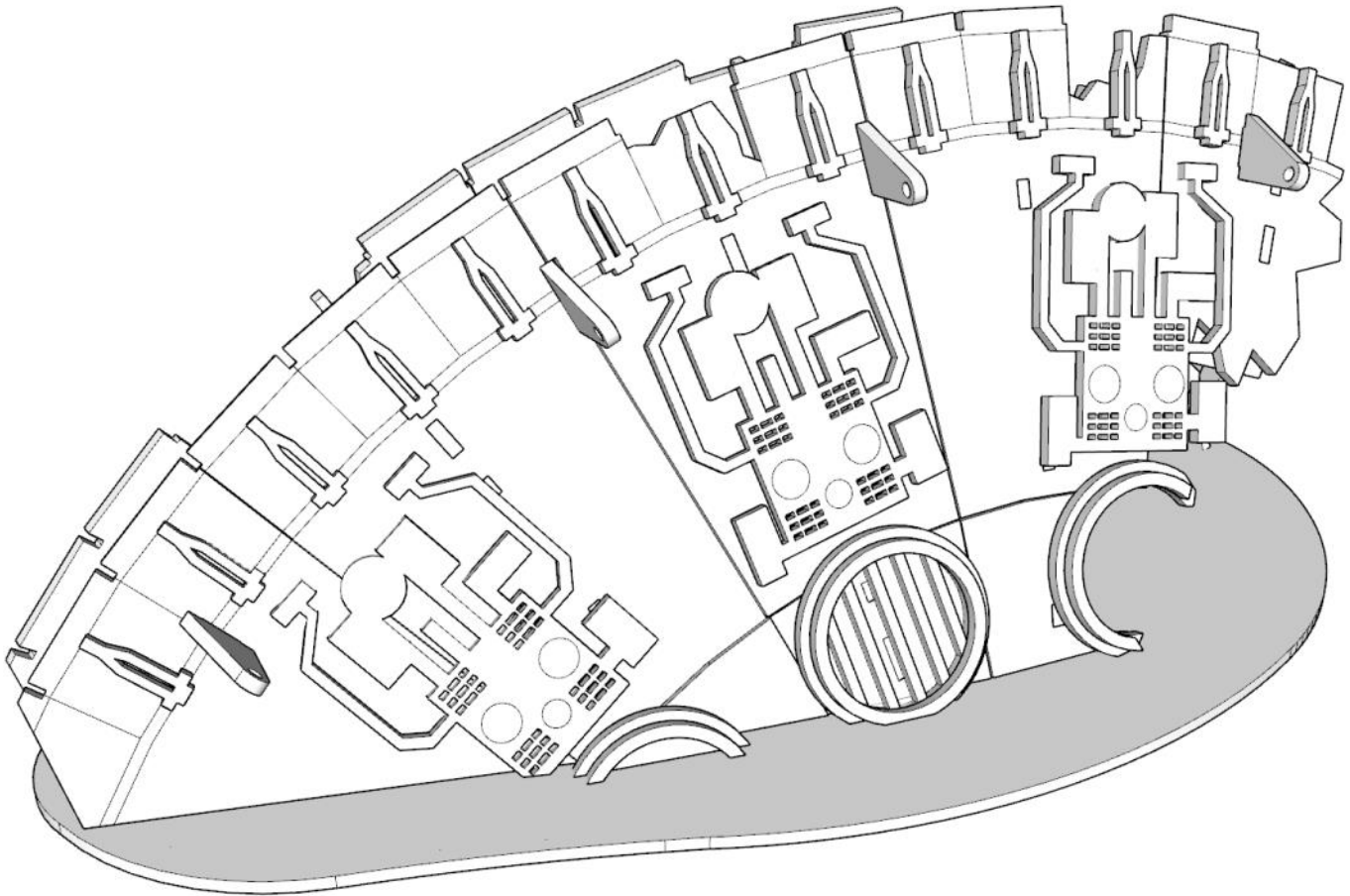
You will need:

- Cutting mat or something to protect your table.
- PVA/Wood glue or superglue if you prefer.
- Small file or sand paper.
- Small blade / hobby knife

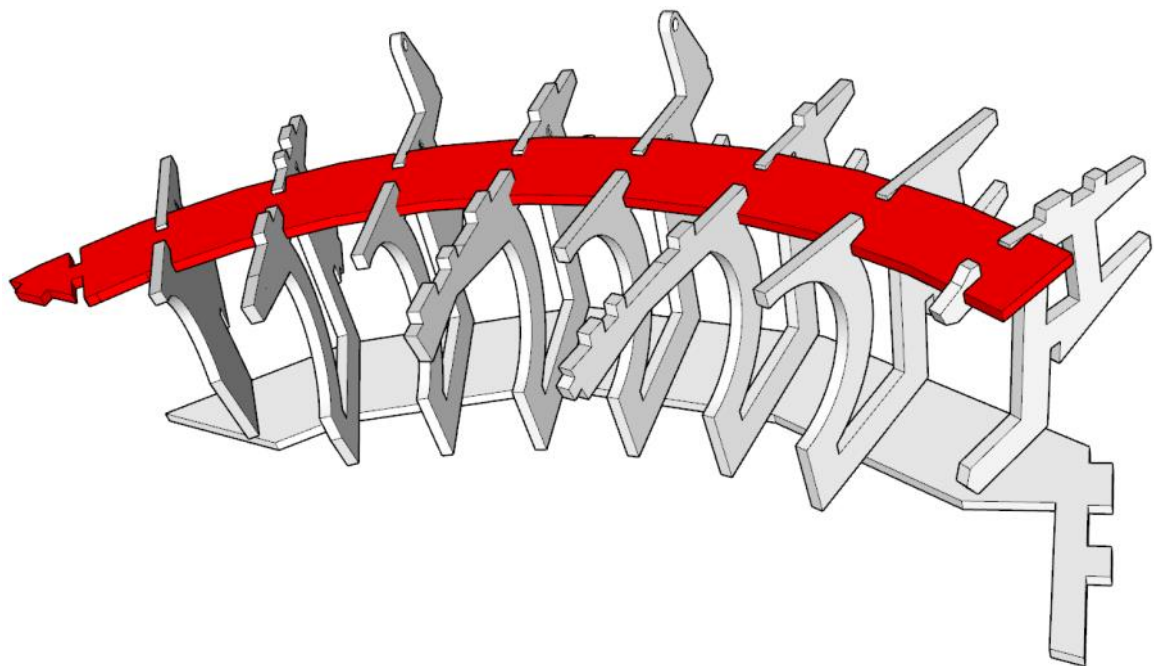
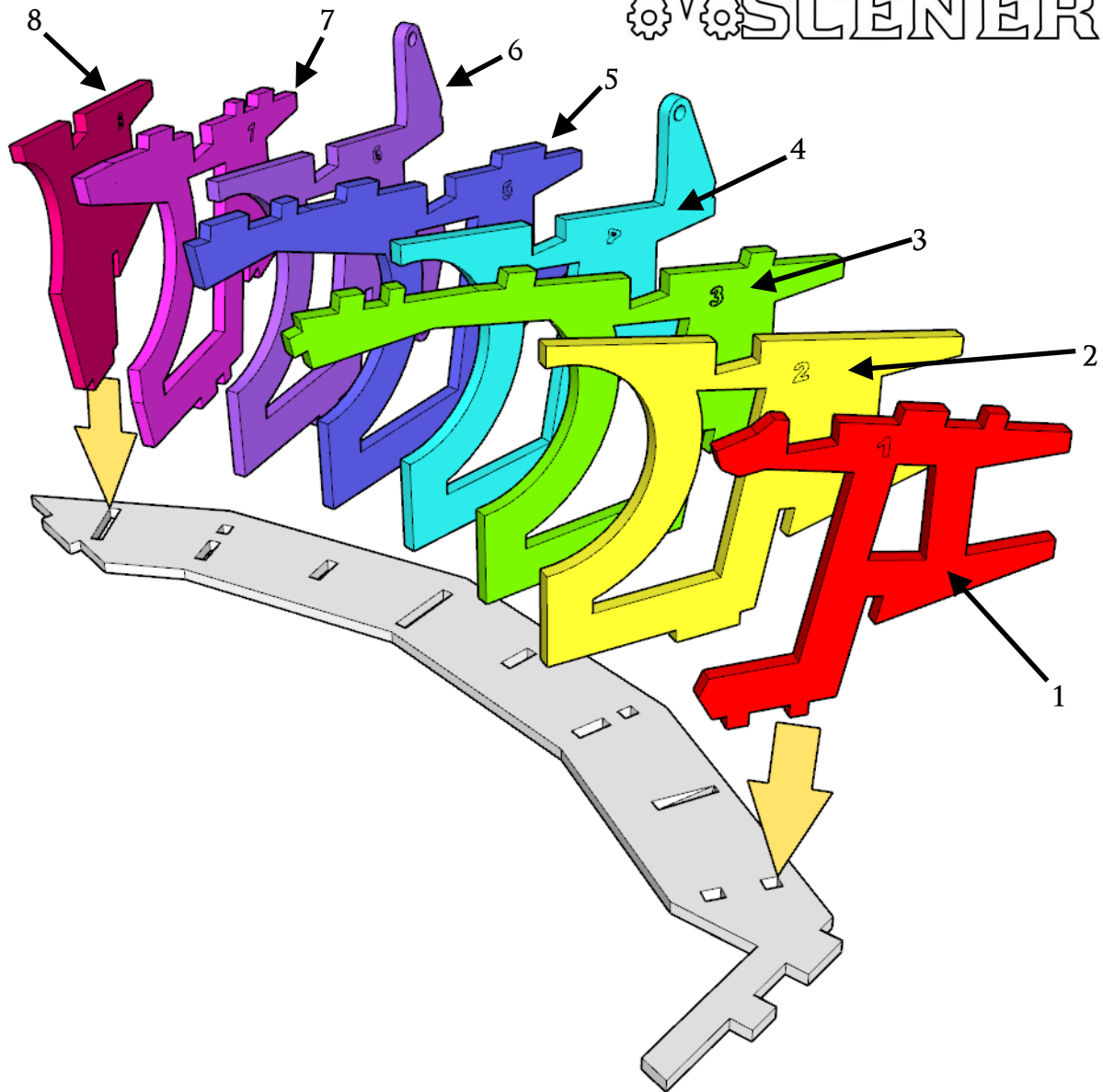


GENERAL PROCESS

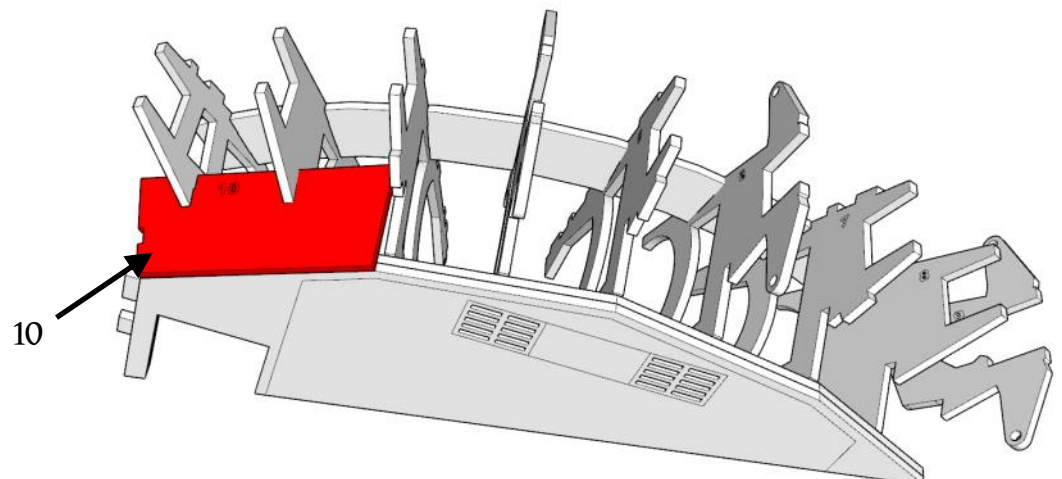
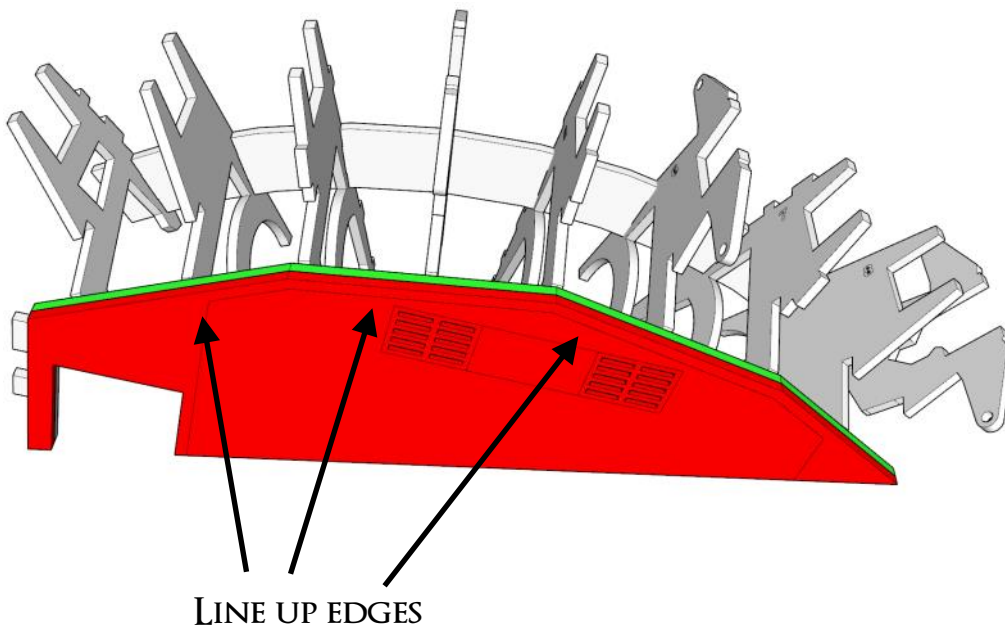
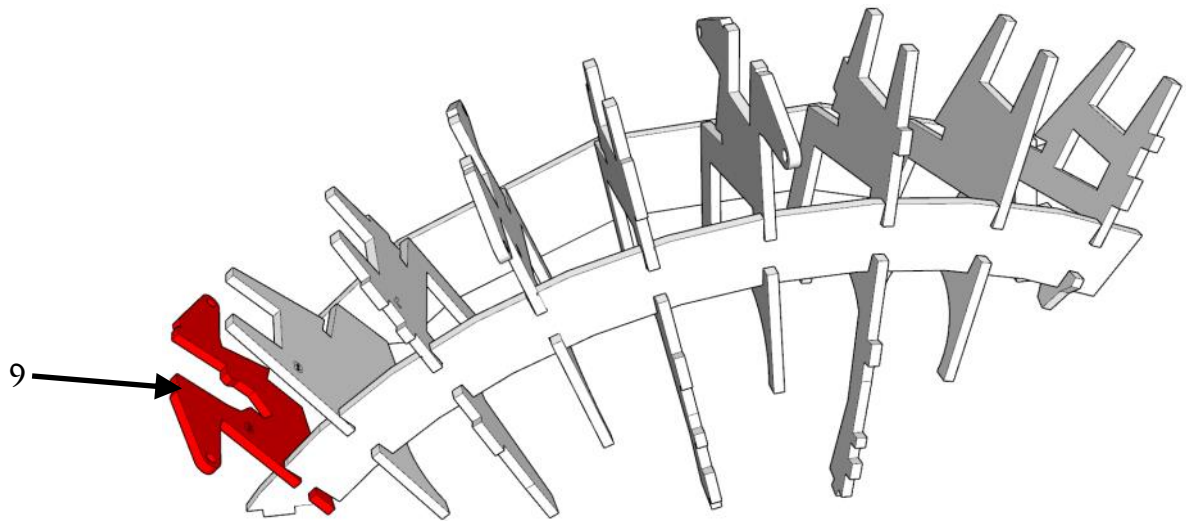
- Clear plenty of table space, you will need it.
- Parts should remove easily from the board by pressing through and popping them out. It's a good idea to cut through the tiny joins first though, and some parts (particularly smaller, more detailed parts) may need more careful persuasion.
- Use file or sand paper to remove the small bur caused by the connection to the frame.
- It's a good idea to familiarise yourself with how the pieces fit together before gluing.
- Slot the parts together as shown by the pictures below, applying glue wherever there is a connection. (unless shown otherwise)
- Parts may be a very tight fit, slight trimming or sanding of parts may be needed for ease of assembly.



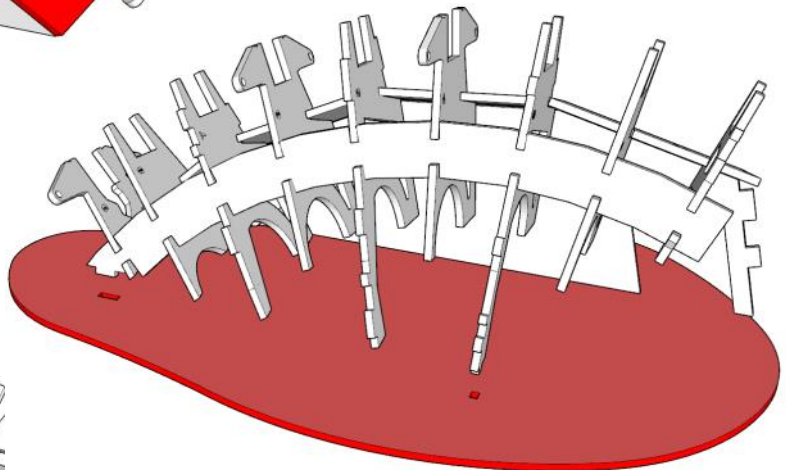
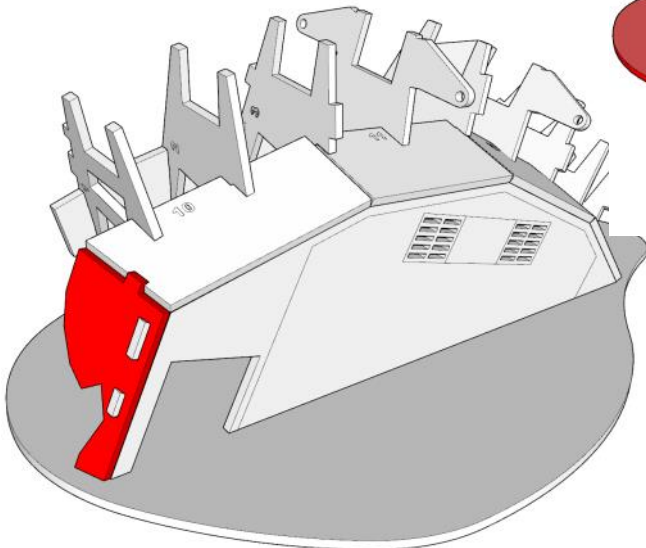
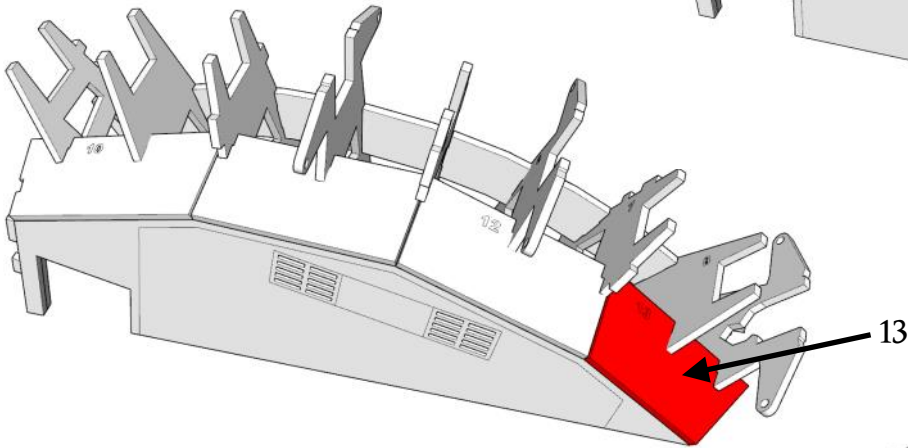
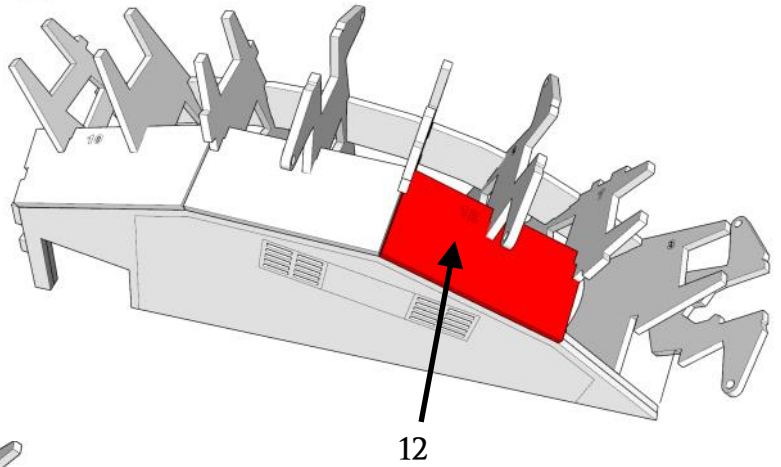
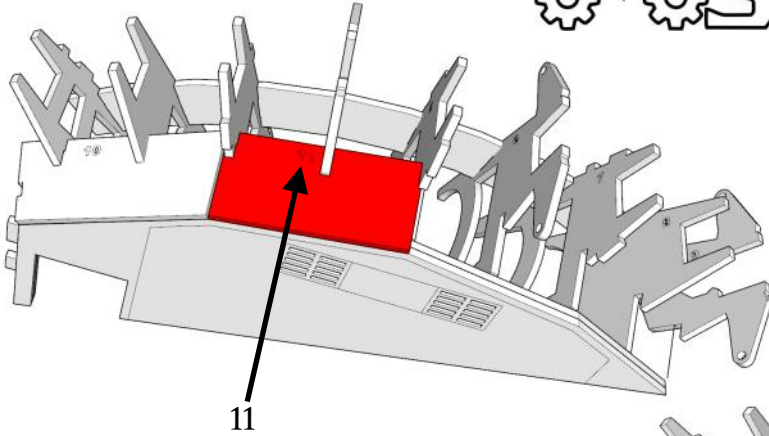
MINIATURE SCENERY



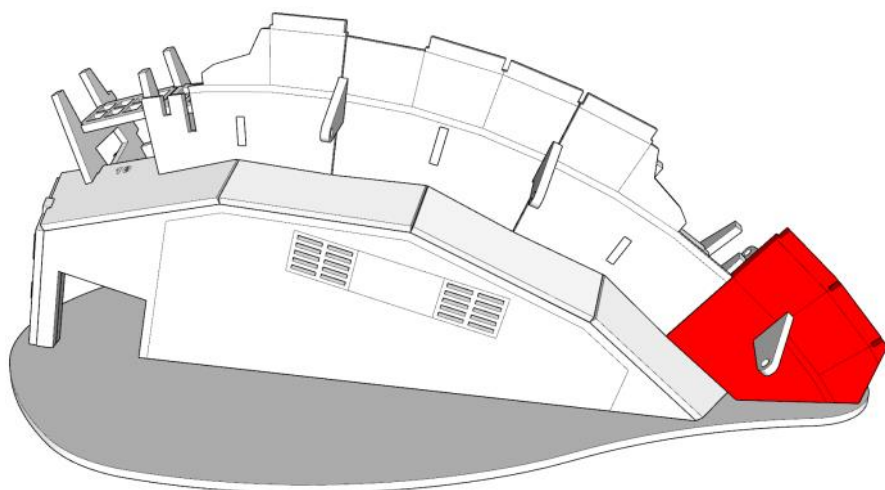
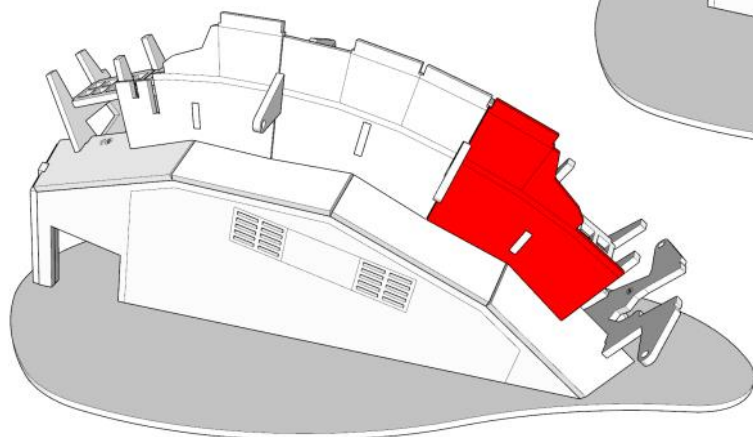
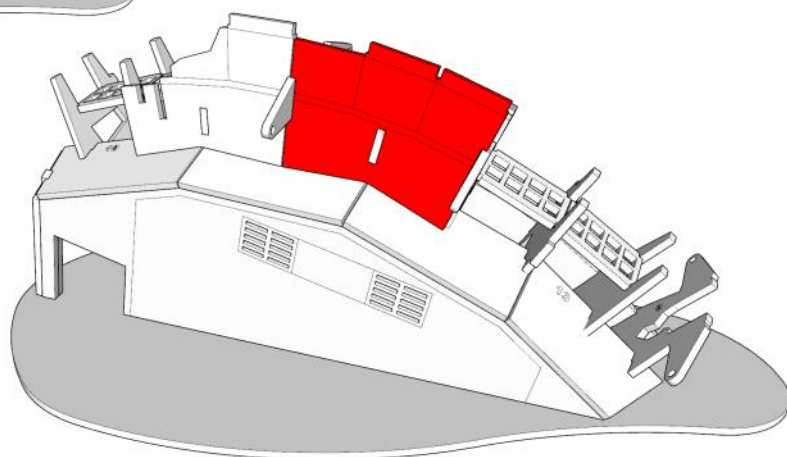
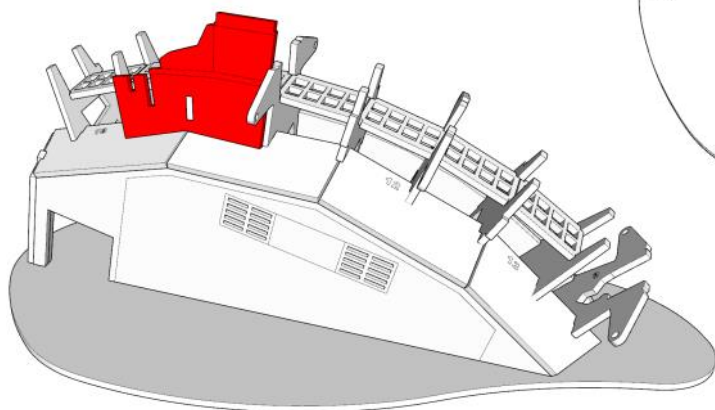
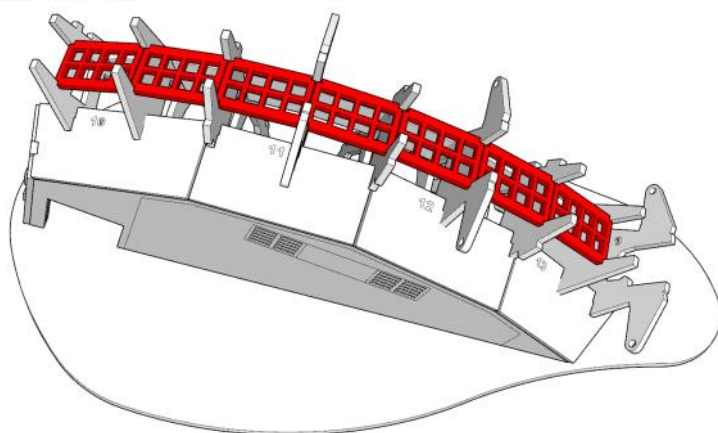
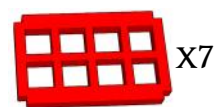
MINIATURE SCENERY



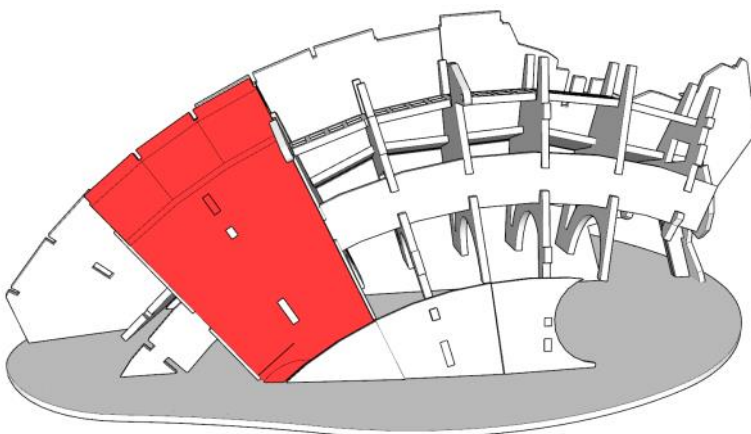
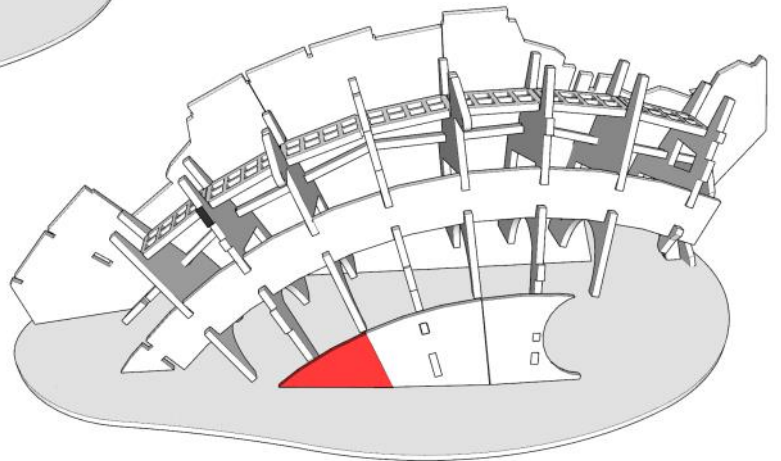
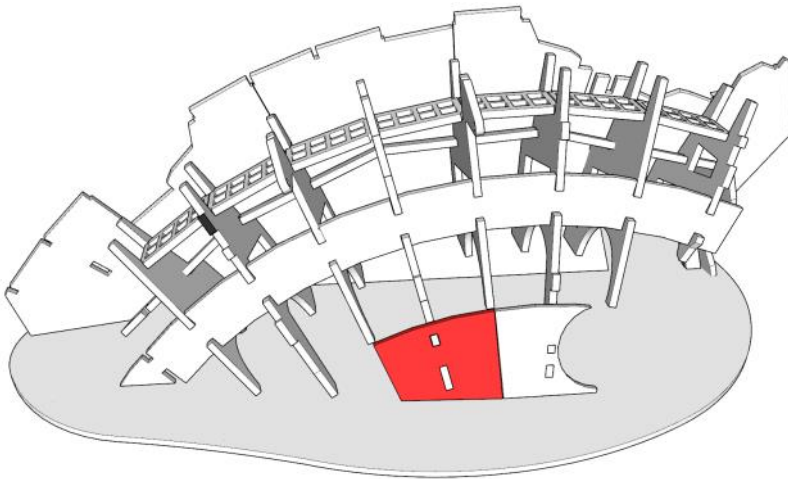
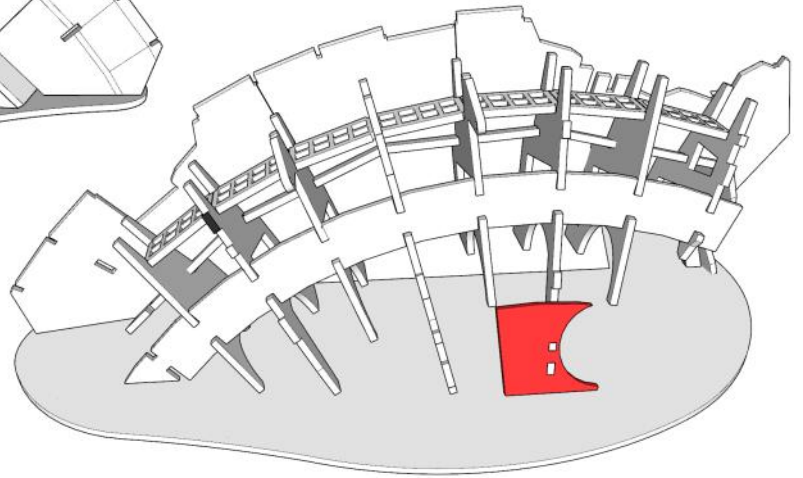
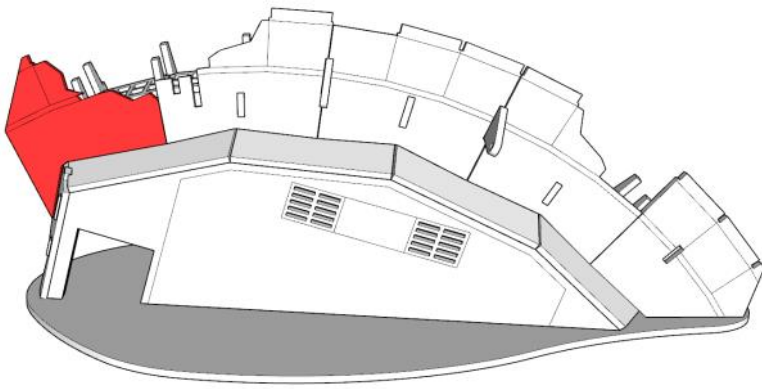
MINIATURE SCENERY



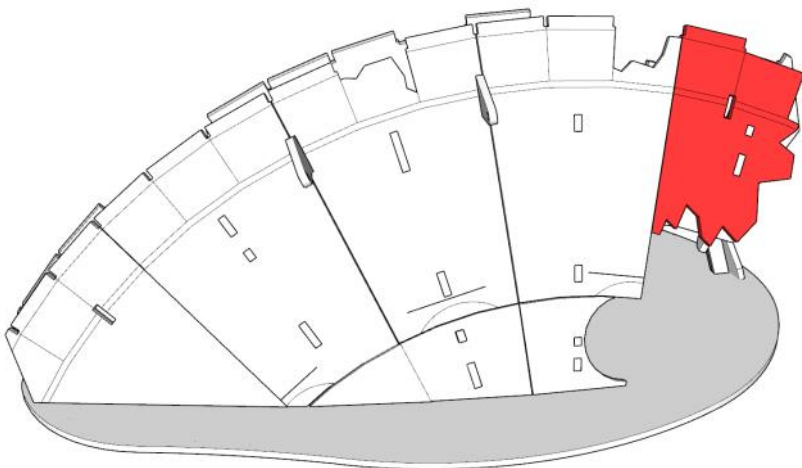
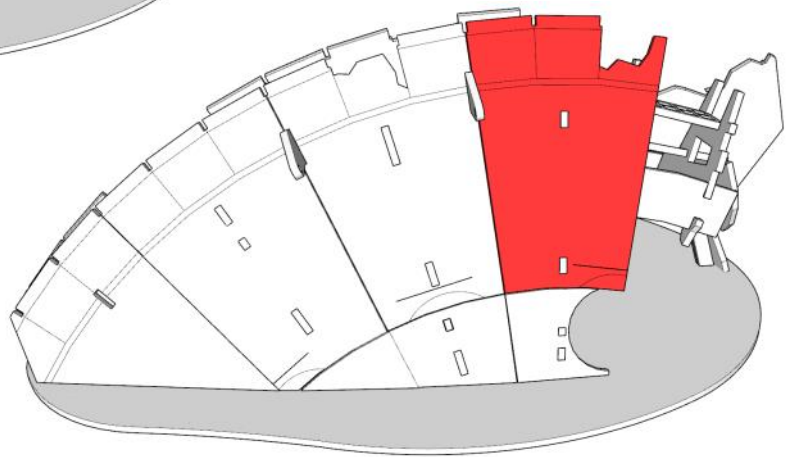
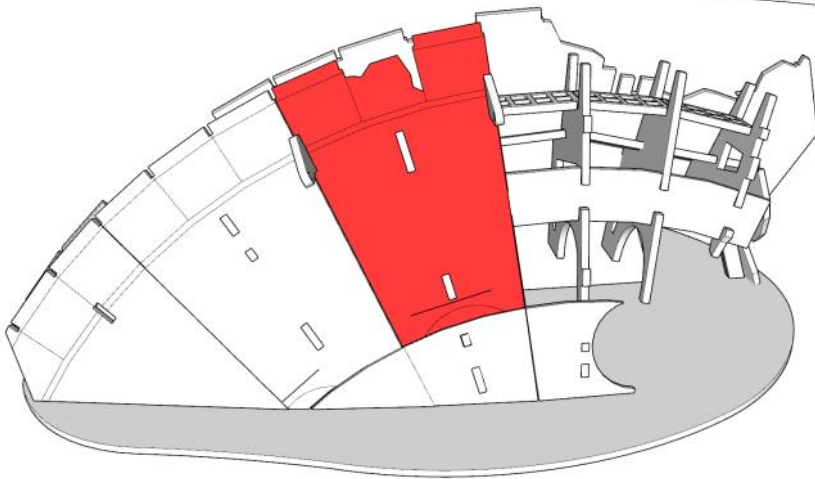
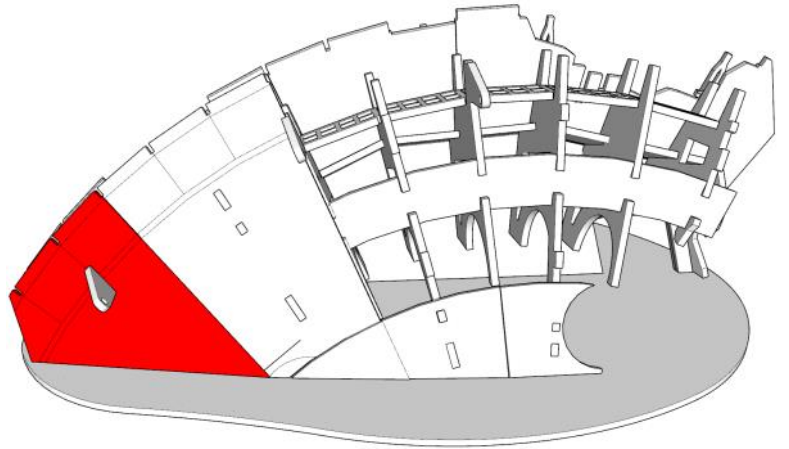
MINIATURE SCENERY



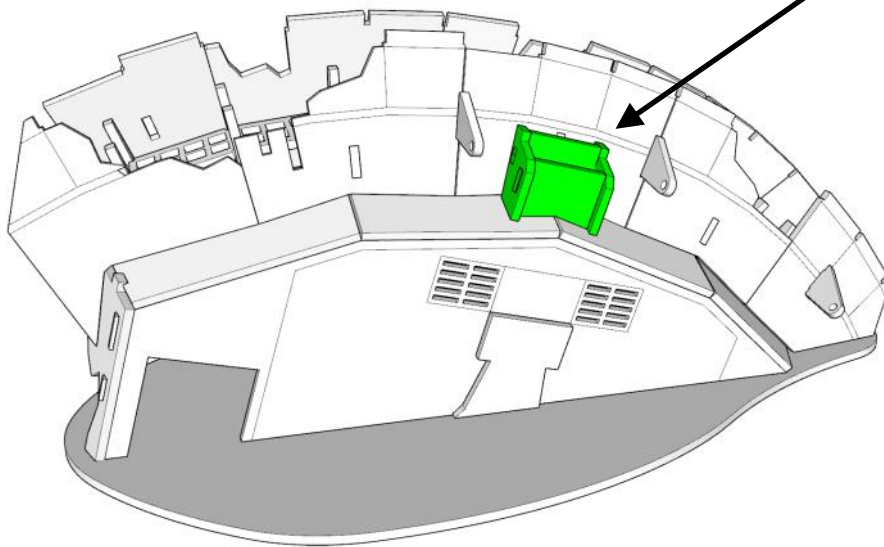
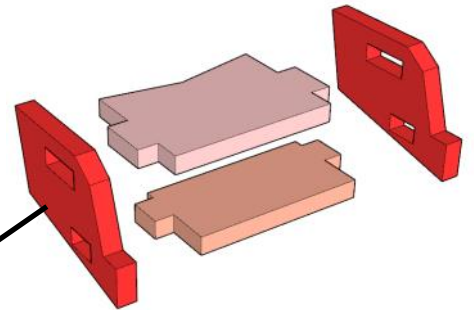
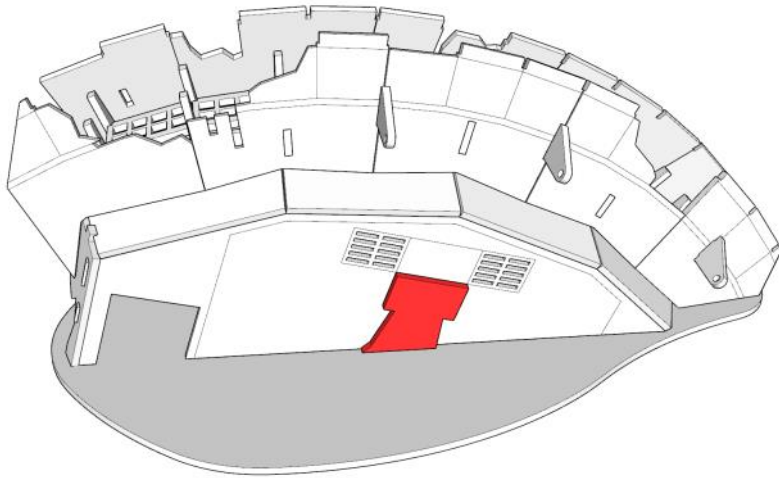
MINIATURE SCENERY



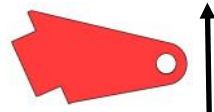
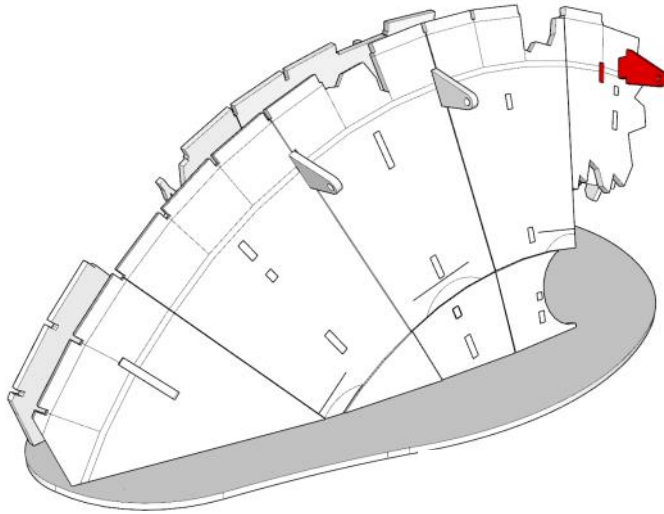
MINIATURE SCENERY



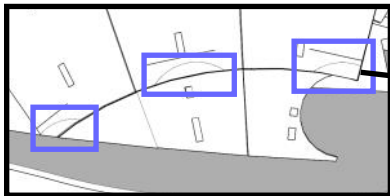
MINIATURE SCENERY



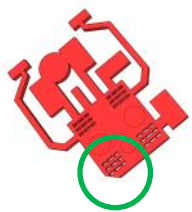
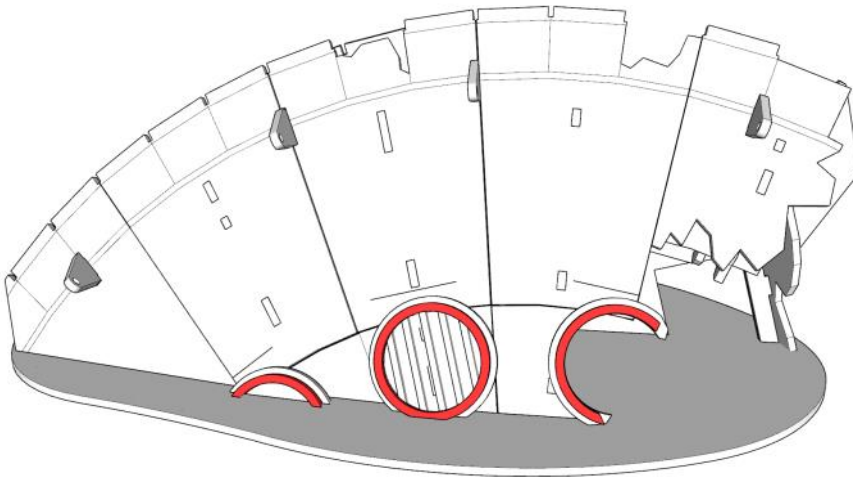
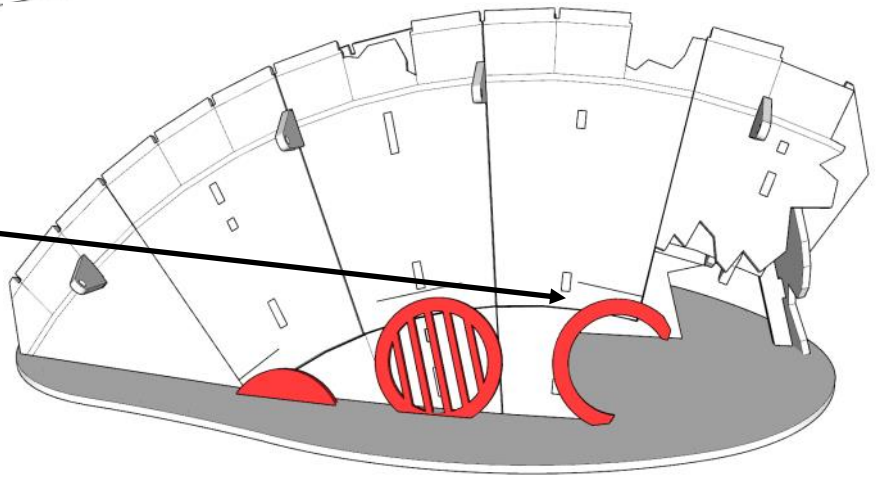
MINIATURE SCENERY



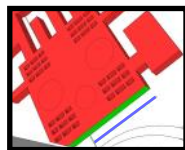
THIS WAY UP



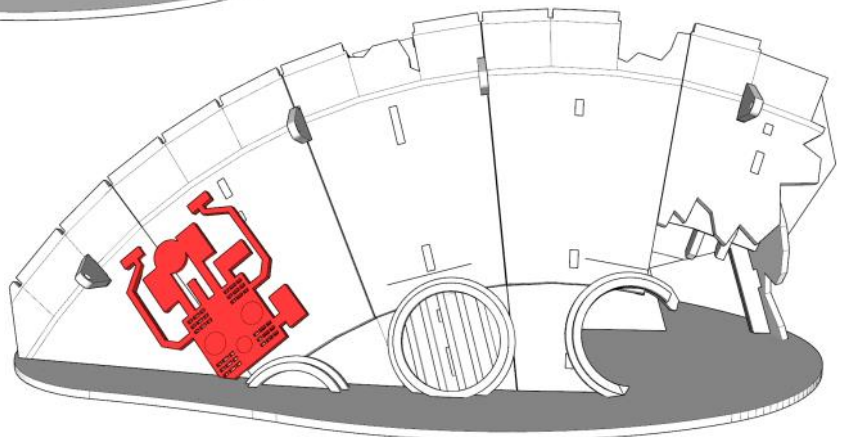
ENGRAVE LINES TO HELP
PLACE CIRCLES



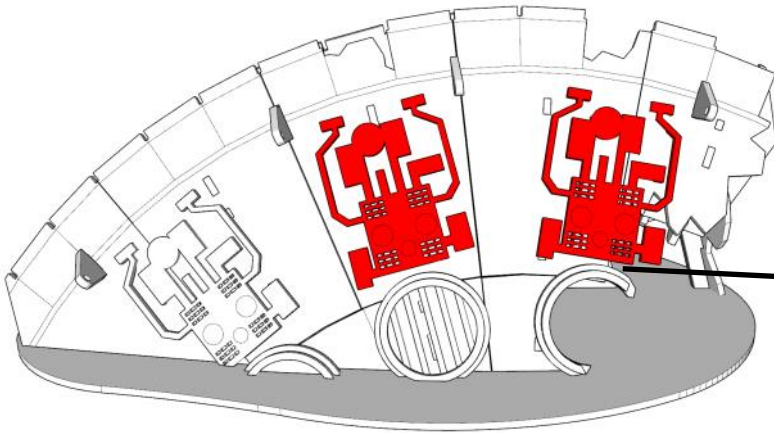
FIRST PART FLAT
ON THIS CORNER



LINE UP LOWER
GREEN PART
WITH ENGRAVE
LINE



MINIATURE SCENERY



LINE UP THE BOTTOM PART
WITH THE ENGRAVED LINE

