

MINIATURE SCENERY

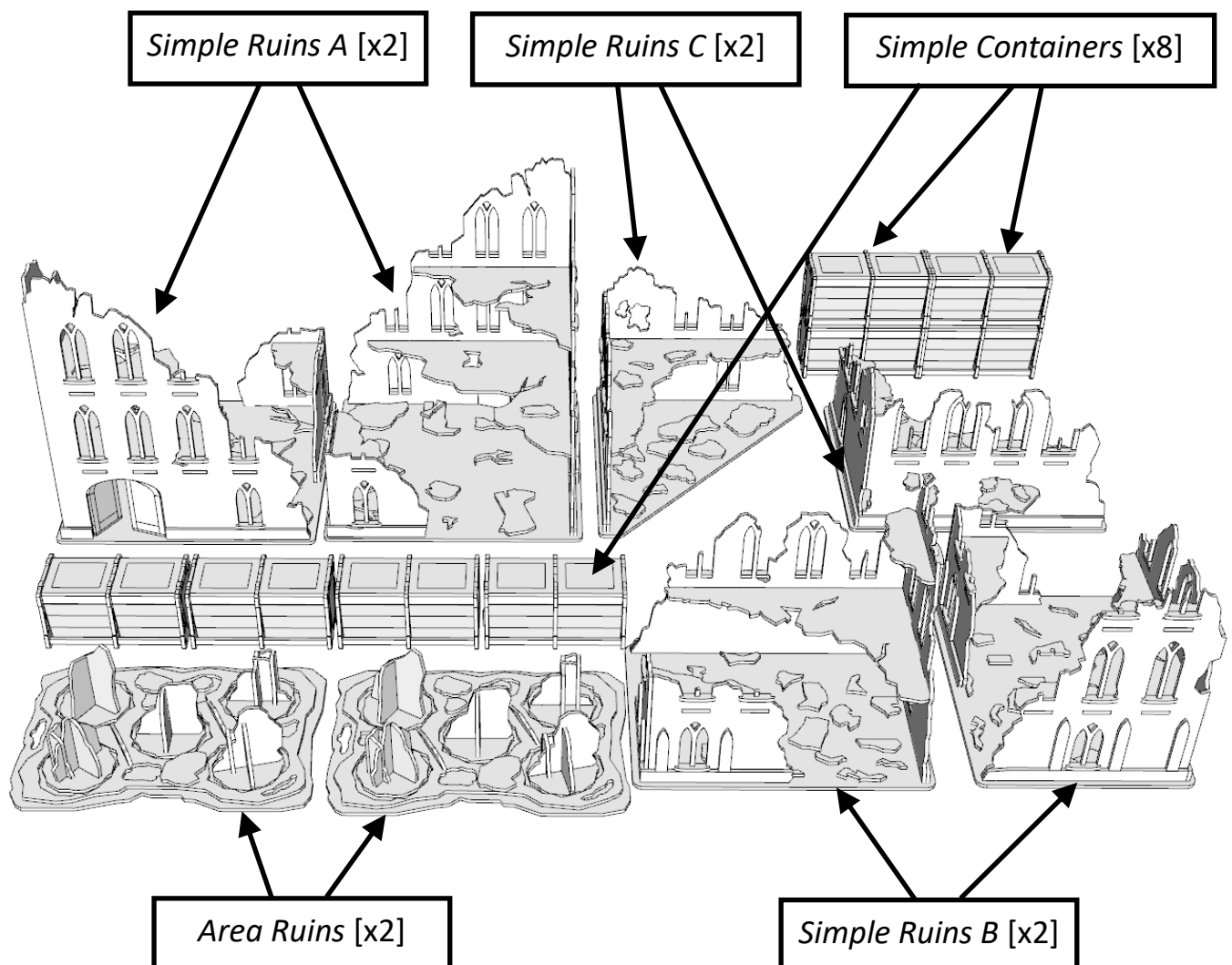
INSTRUCTIONS SIMPLE RUINS SET

IN THESE INSTRUCTION

You will find instructions for each kit. Kits themselves are labelled with the following:

- Simple Ruins Building **A** (large ruin)
- Simple Ruins Building **B** (medium ruin)
- Simple Ruins Building **C** (corner ruin)
- **Area** Ruin
- Simple **Container**

There are many small extra bits of ruins on each panel. Place these parts wherever you like on any kit or leave them off completely. All up to you.



MINIATURE SCENERY

INSTRUCTIONS SIMPLE RUINS A

PREPARATION

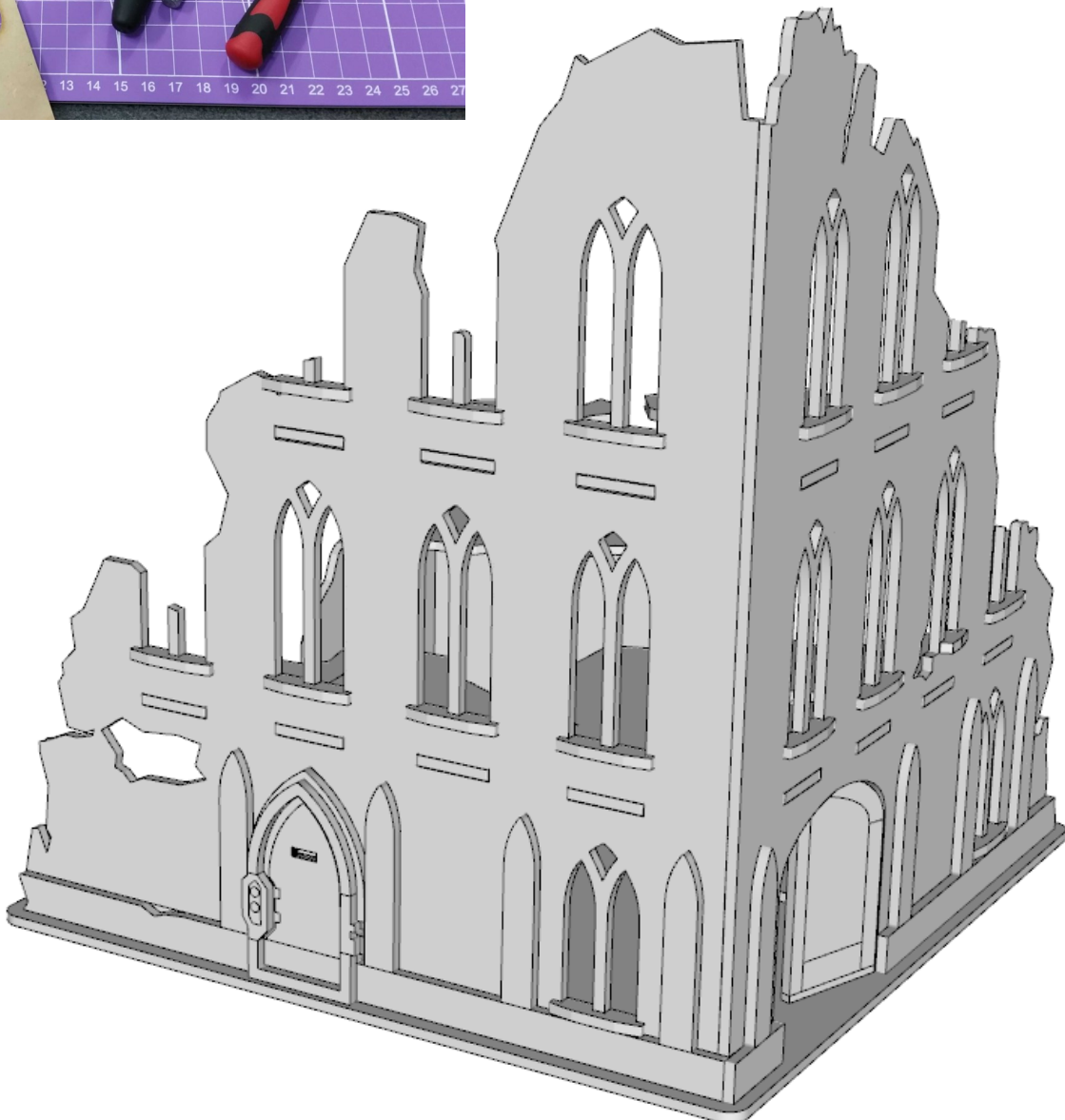
You will need:

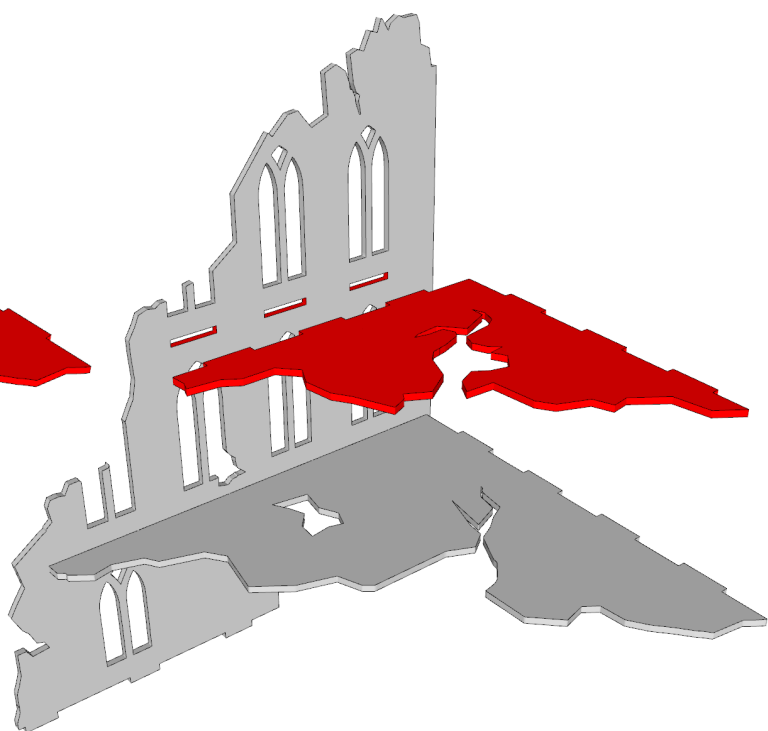
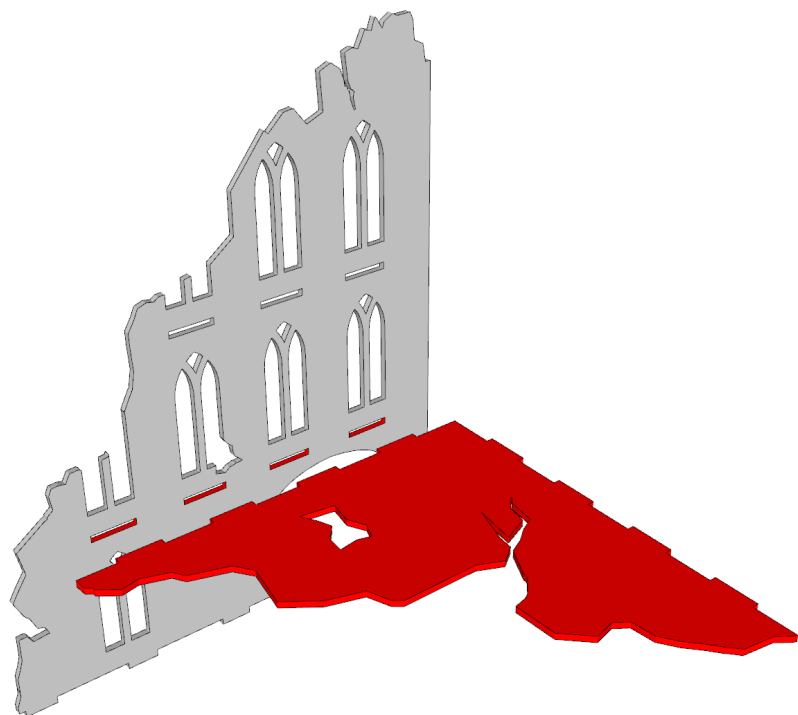
- Cutting mat or something to protect your table.
- PVA/Wood glue or superglue if you prefer.
- Small file or sand paper.
- Small blade / hobby knife



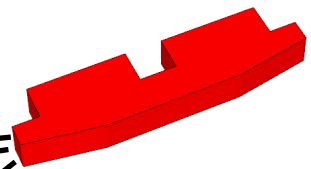
GENERAL PROCESS

- Clear plenty of table space, you will need it.
- Parts should remove easily from the board by pressing through and popping them out. It's a good idea to cut through the tiny joins first though, and some parts (particularly smaller, more detailed parts) may need more careful persuasion.
- Use file or sand paper to remove the small bur caused by the connection to the frame.
- It's a good idea to familiarise yourself with how the pieces fit together before gluing.
- Slot the parts together as shown by the pictures below, applying glue wherever there is a connection. (unless shown otherwise)
- Parts may be a very tight fit, slight trimming or sanding of parts may be needed for ease of assembly.

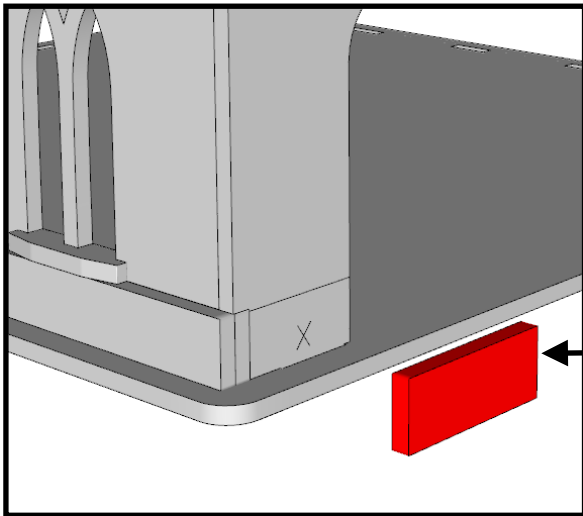
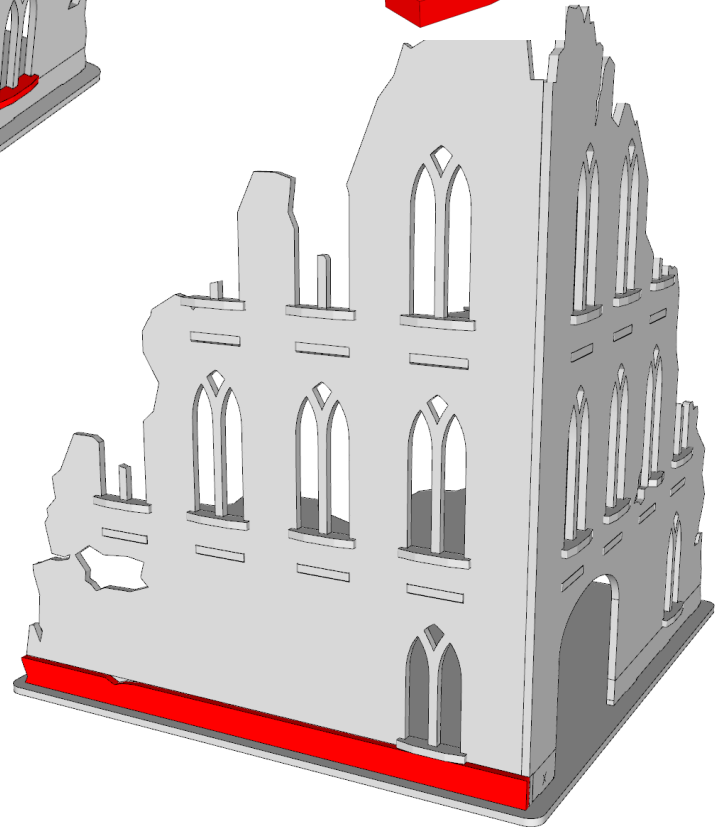
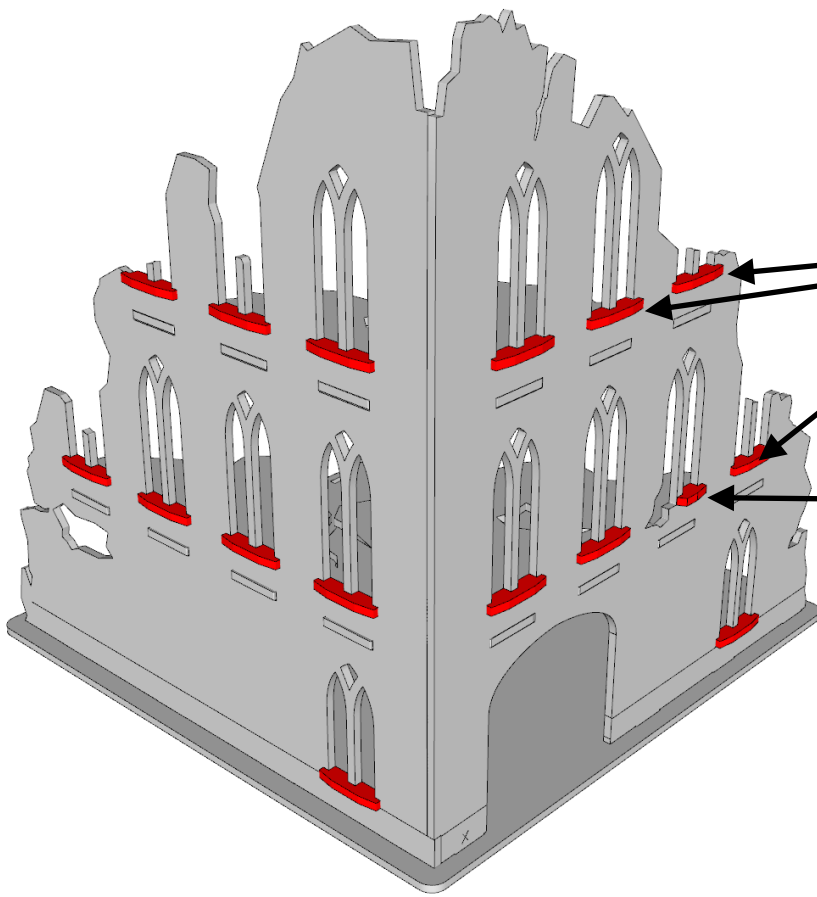
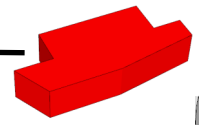




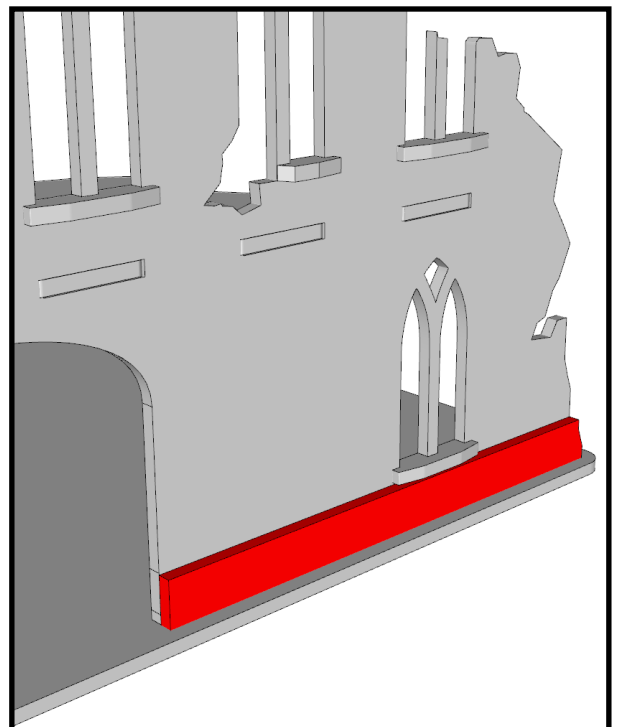
Window ledges

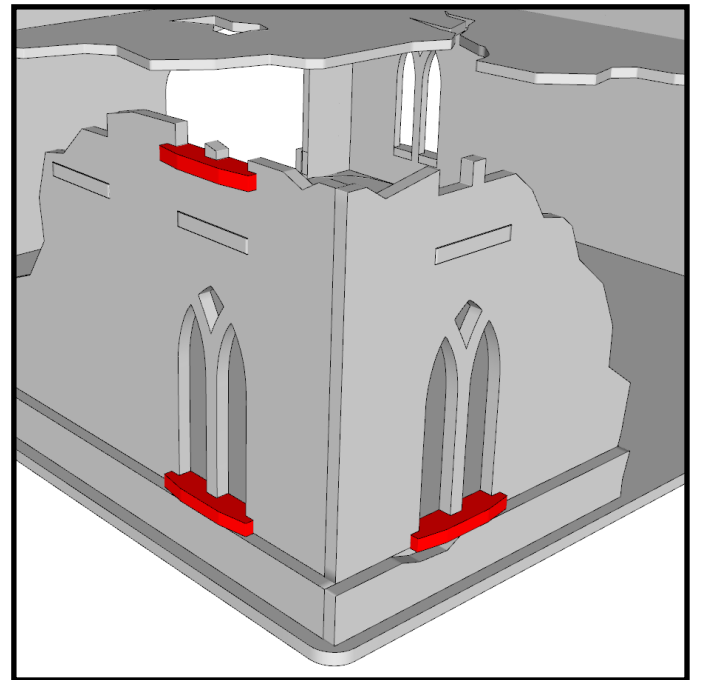
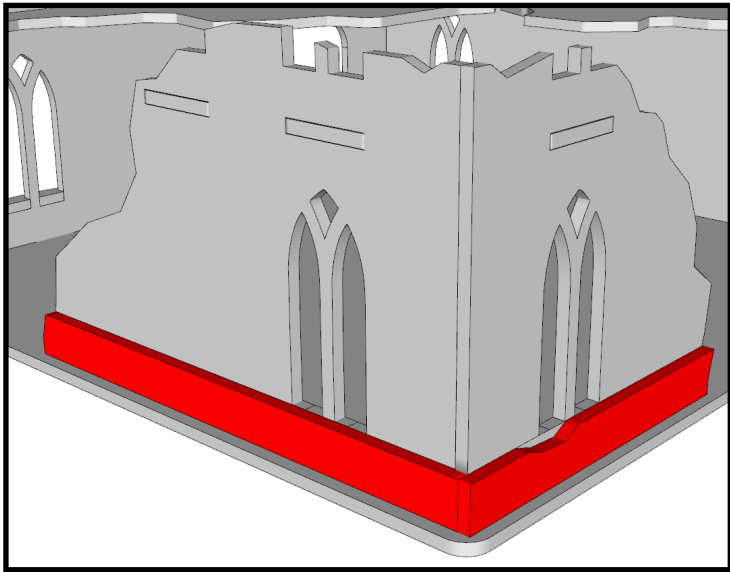
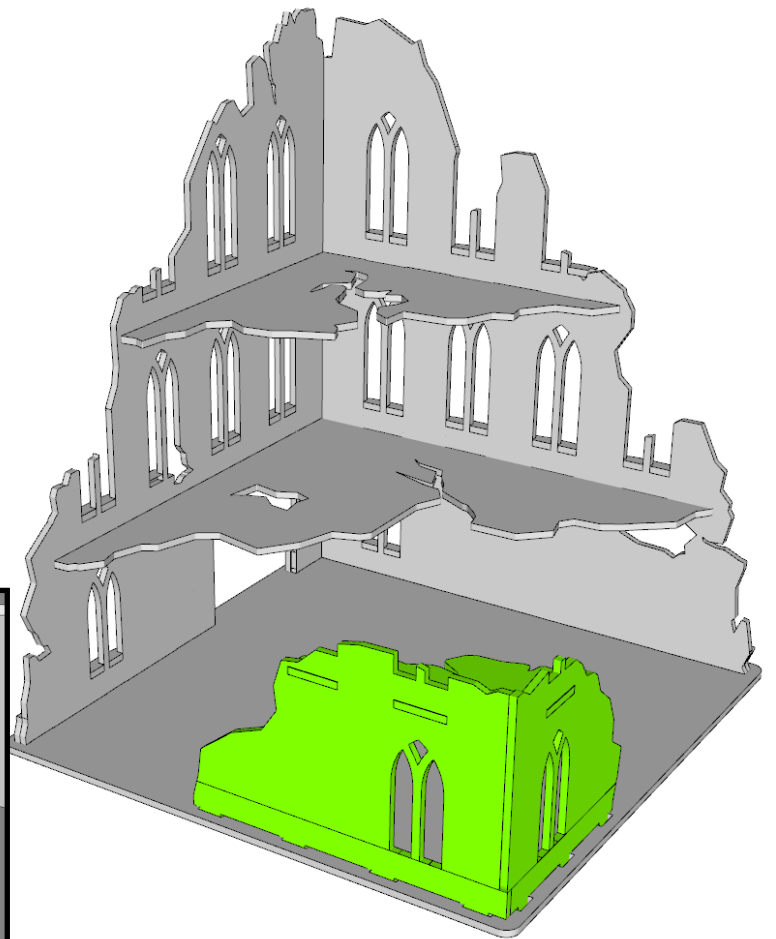
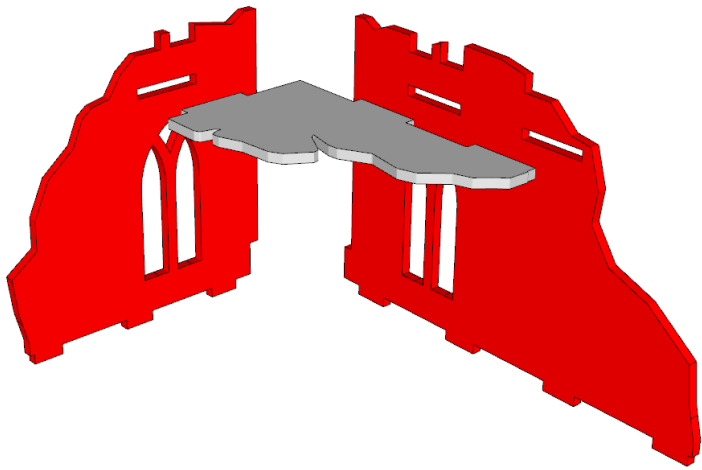


Half Ledge

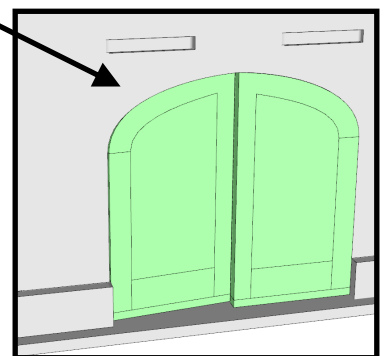
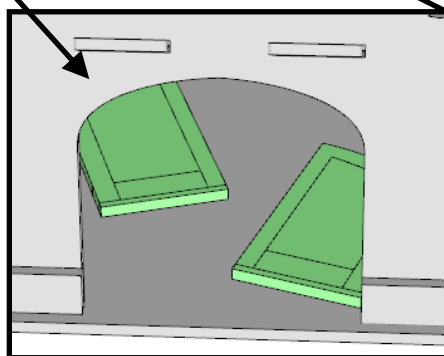
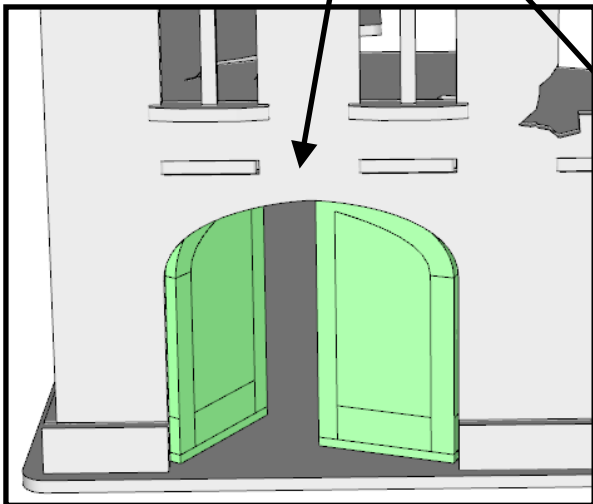


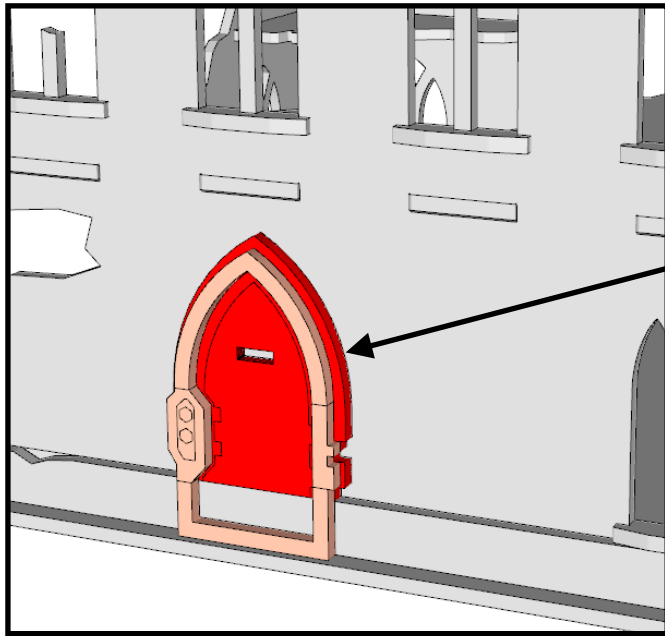
X



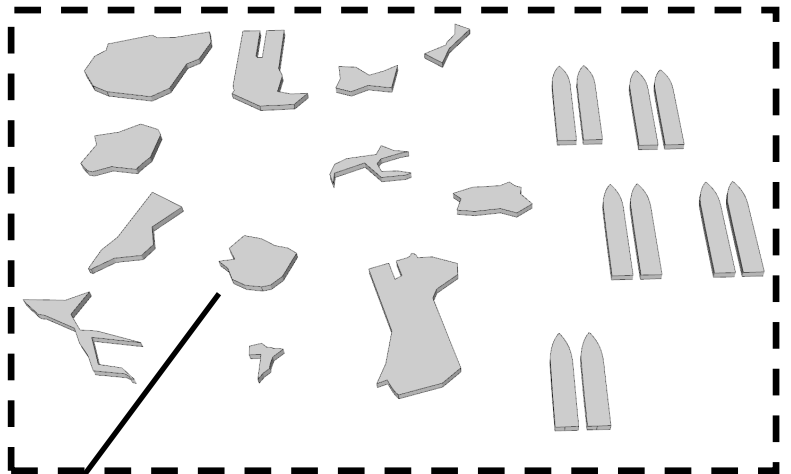


Place doors how you like.



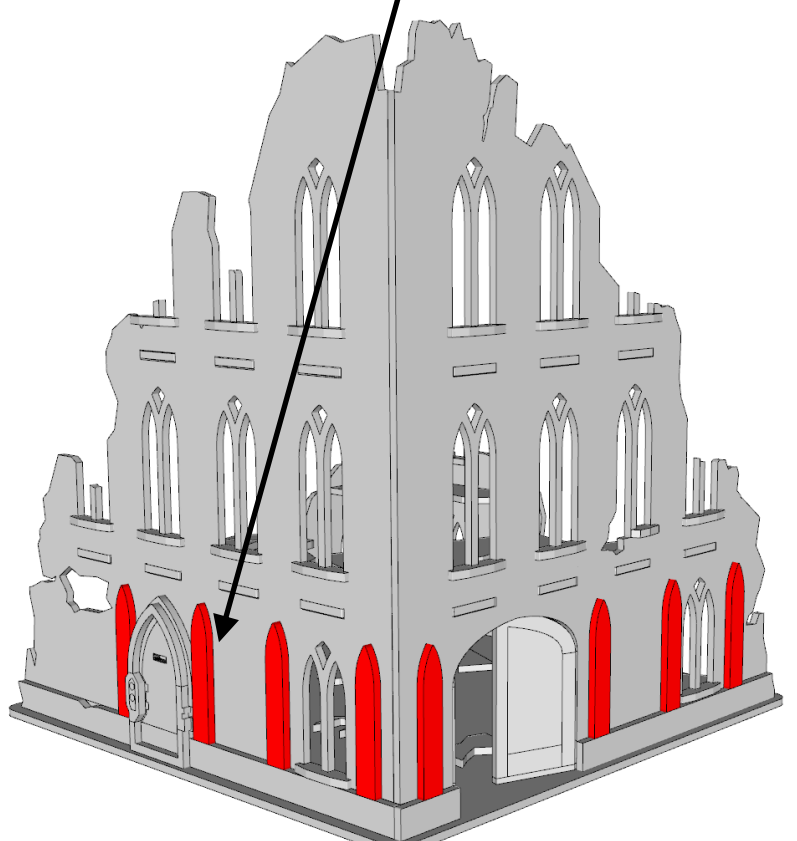


Smaller door parts can go on any wall or left off completely. It can also be used on the smaller simple ruins kit if you like.



Scatter left over bits as rubble.

The window bits are great on the walls.



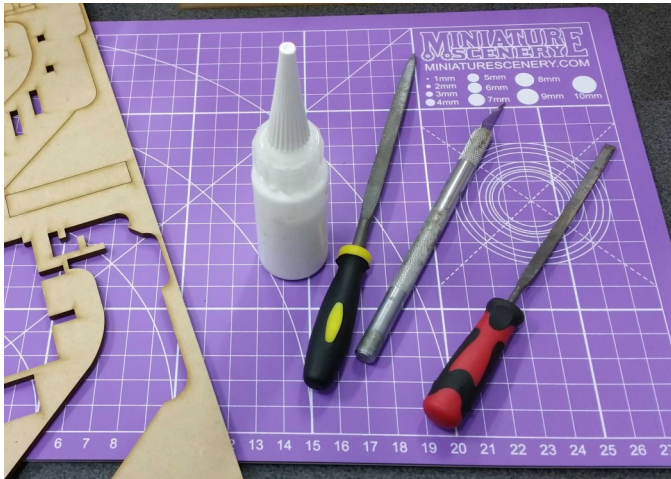
MINIATURE SCENERY

INSTRUCTIONS SIMPLE RUINS B

PREPARATION

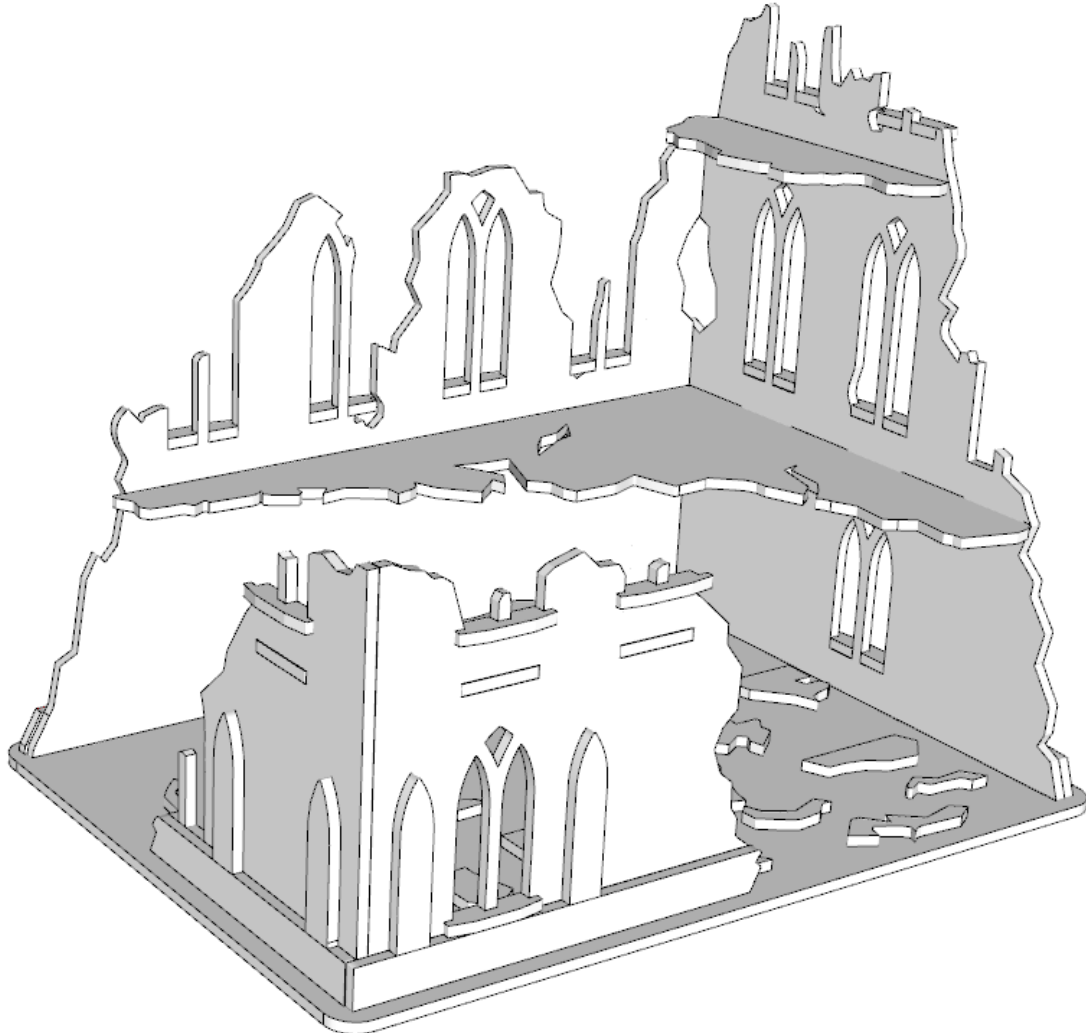
You will need:

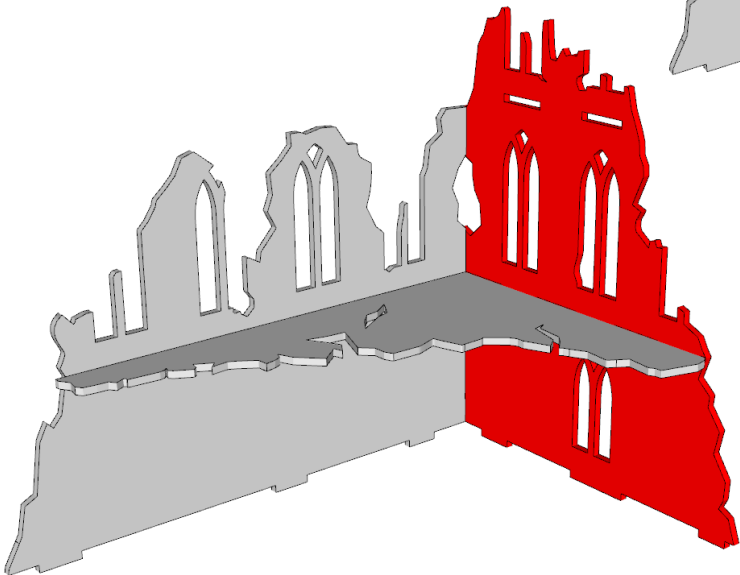
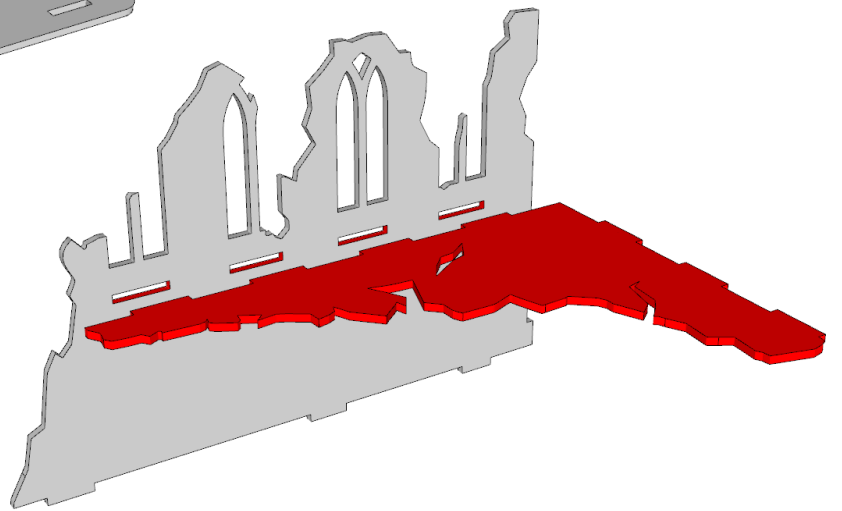
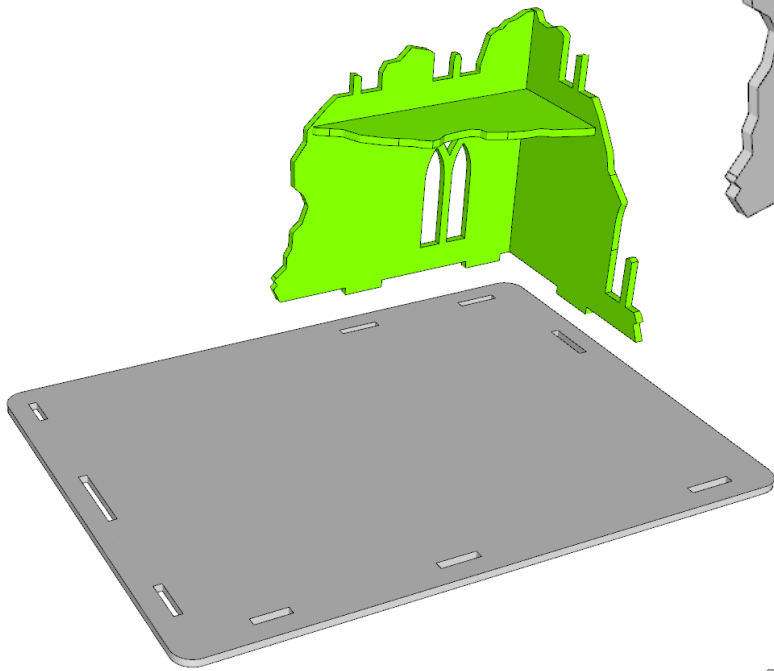
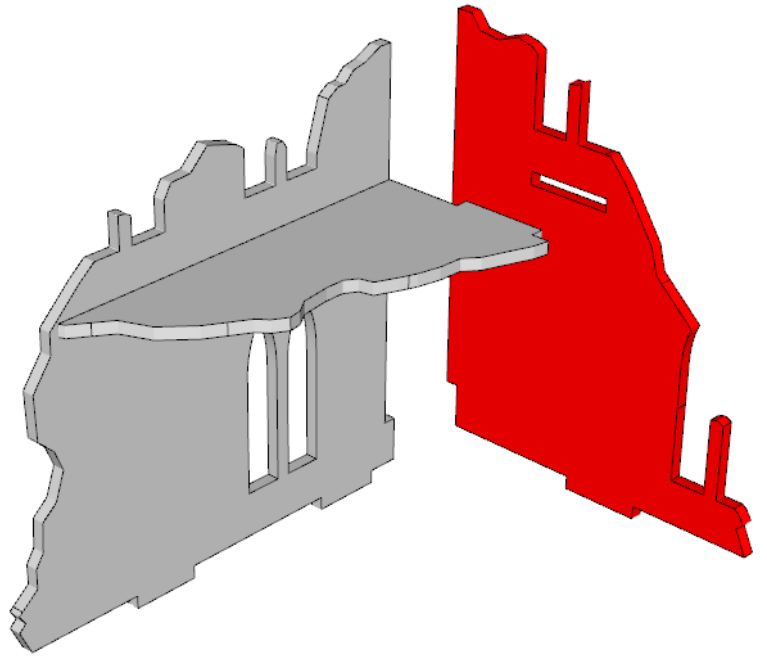
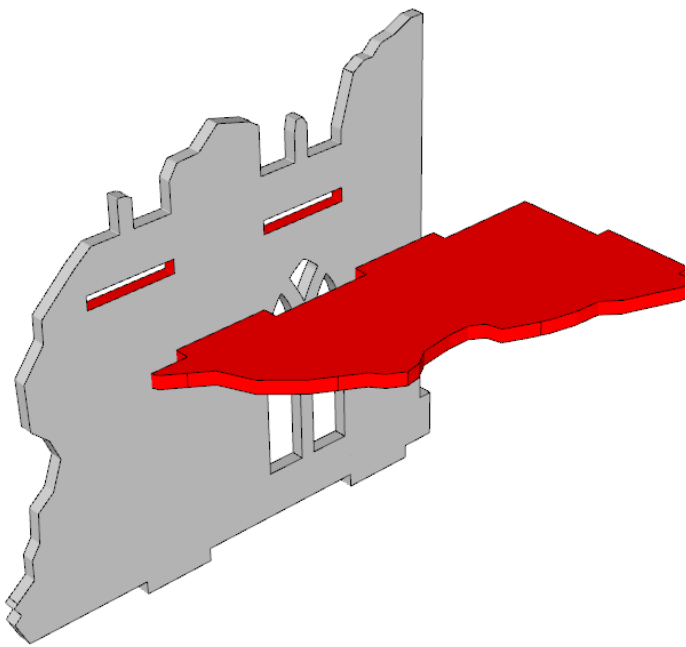
- Cutting mat or something to protect your table.
- PVA/Wood glue or superglue if you prefer.
- Small file or sand paper.
- Small blade / hobby knife

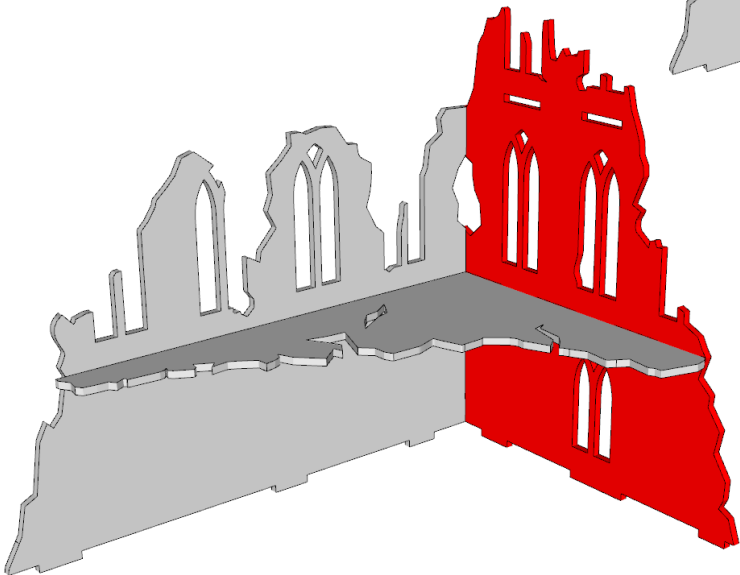
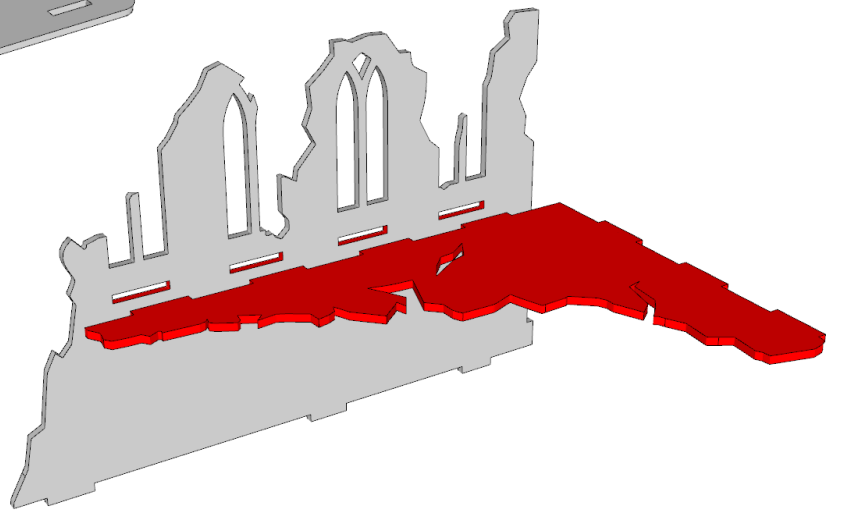
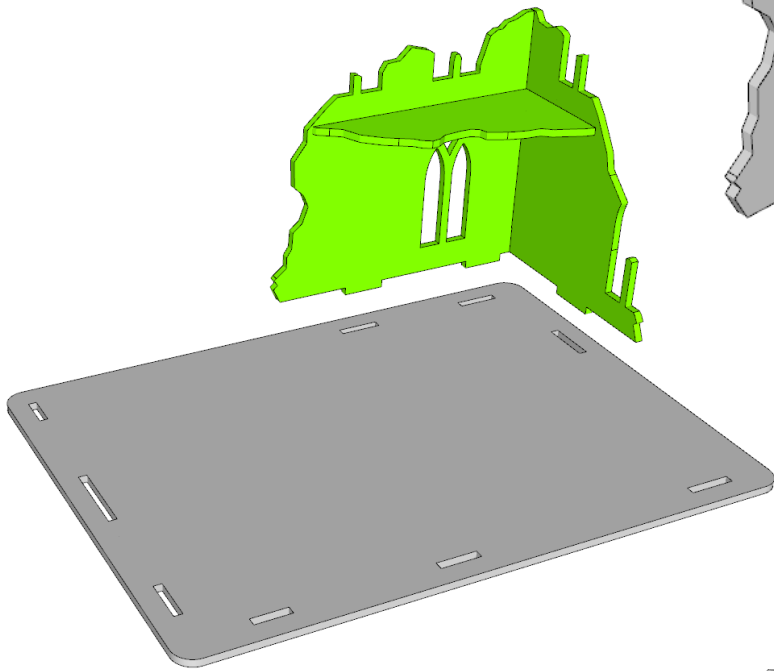
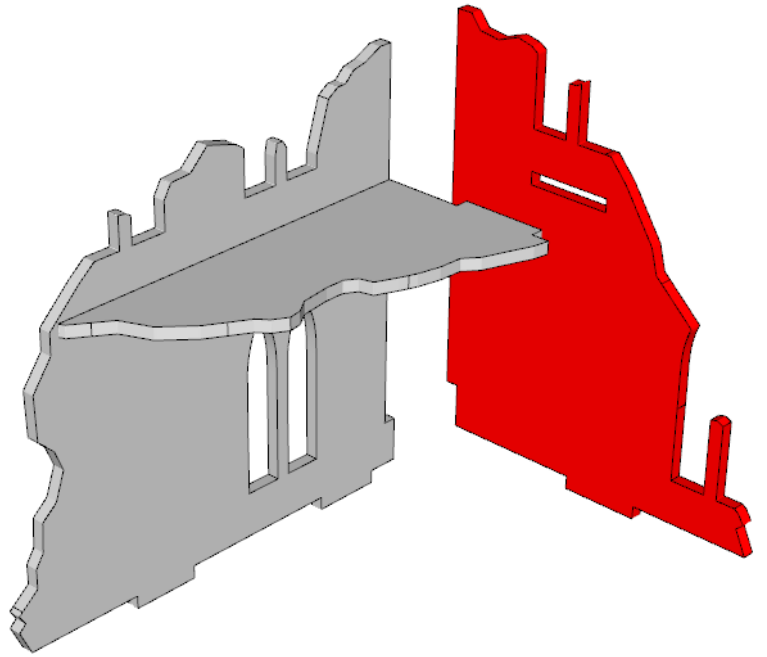
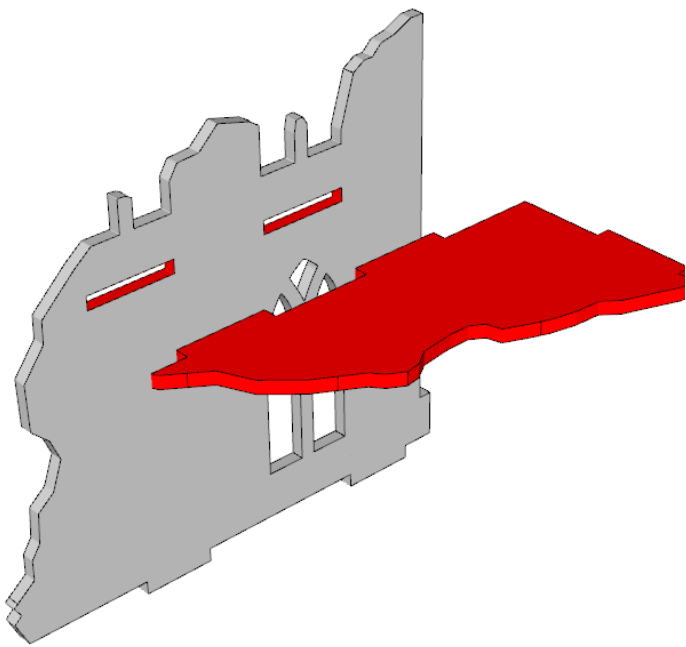


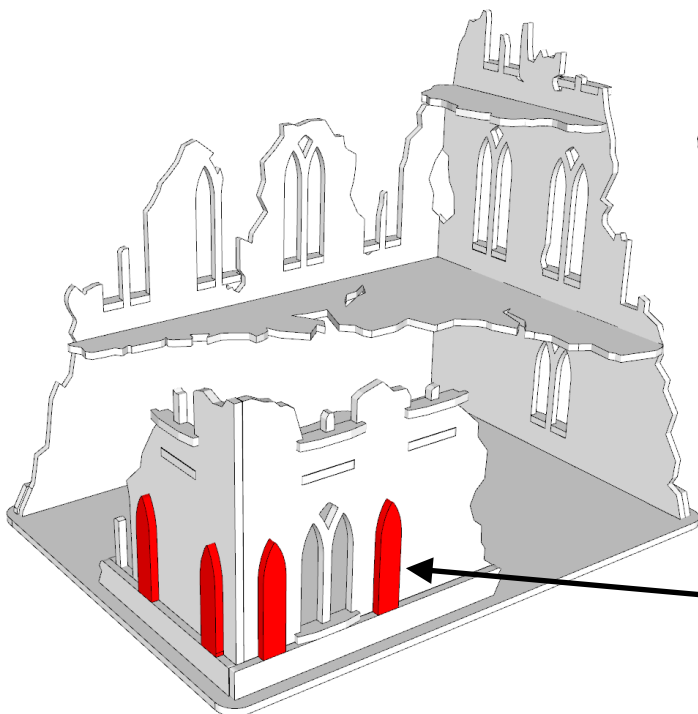
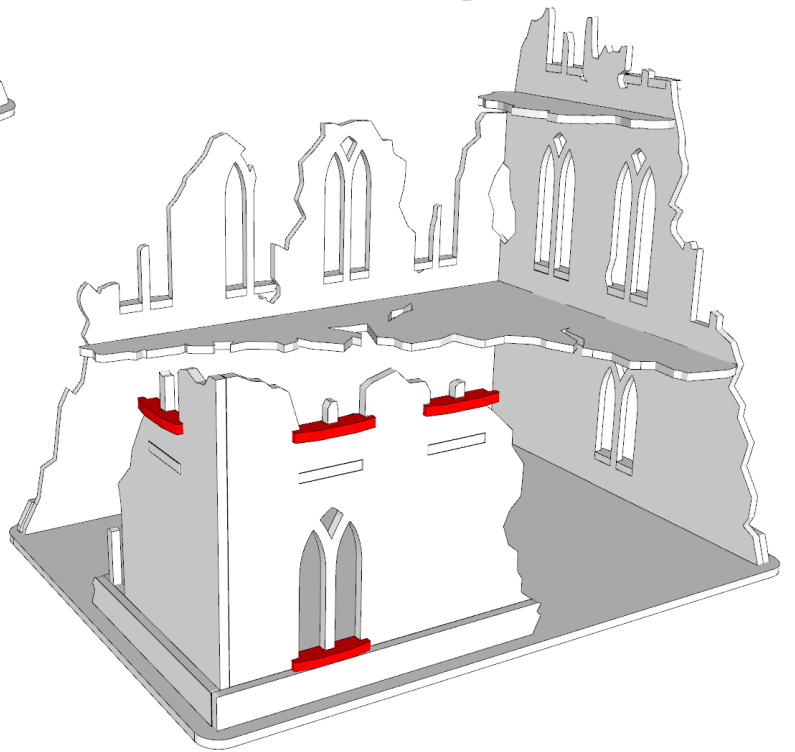
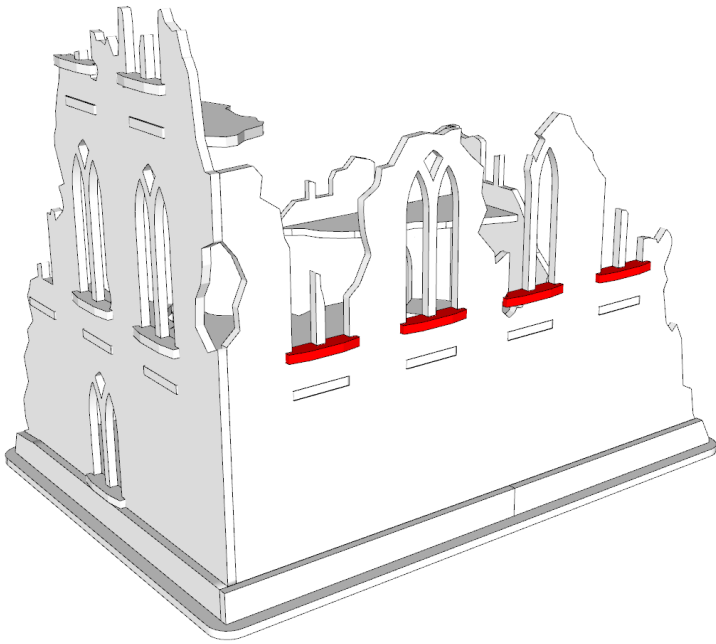
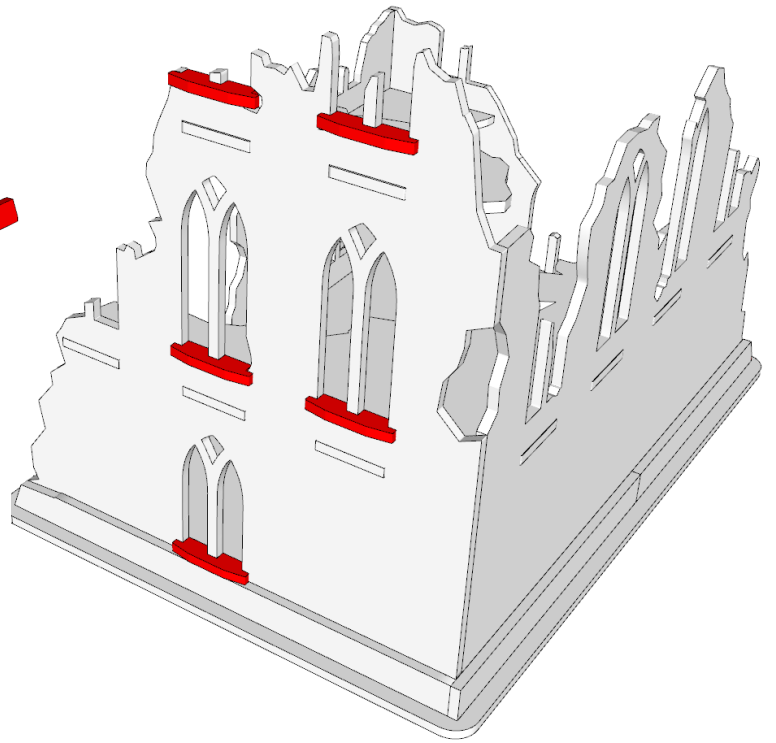
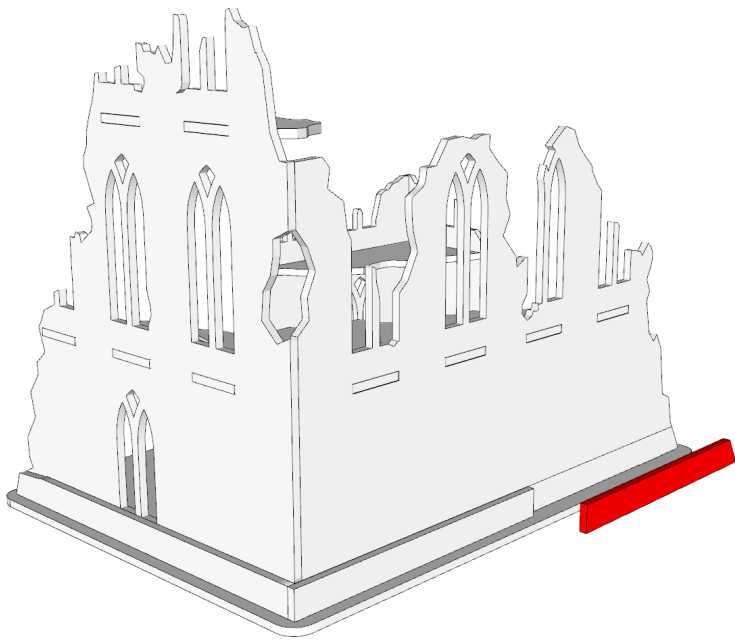
GENERAL PROCESS

- Clear plenty of table space, you will need it.
- Parts should remove easily from the board by pressing through and popping them out. It's a good idea to cut through the tiny joins first though, and some parts (particularly smaller, more detailed parts) may need more careful persuasion.
- Use file or sand paper to remove the small bur caused by the connection to the frame.
- It's a good idea to familiarise yourself with how the pieces fit together before gluing.
- Slot the parts together as shown by the pictures below, applying glue wherever there is a connection. (unless shown otherwise)
- Parts may be a very tight fit, slight trimming or sanding of parts may be needed for ease of assembly.

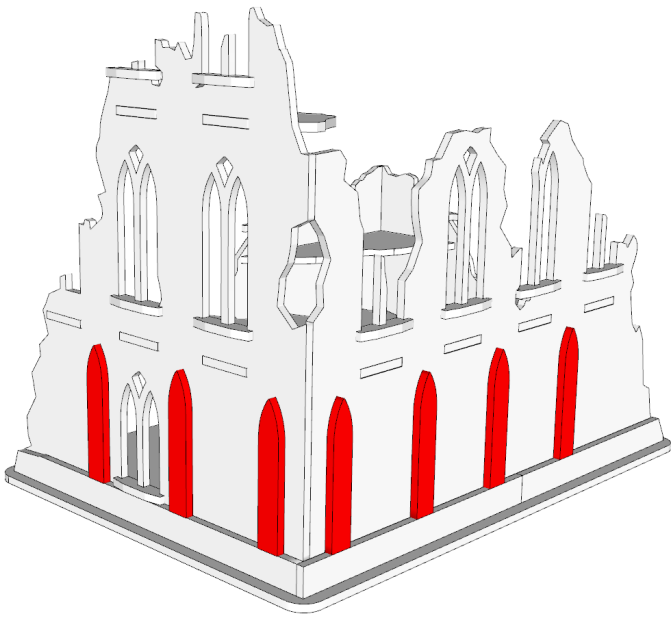




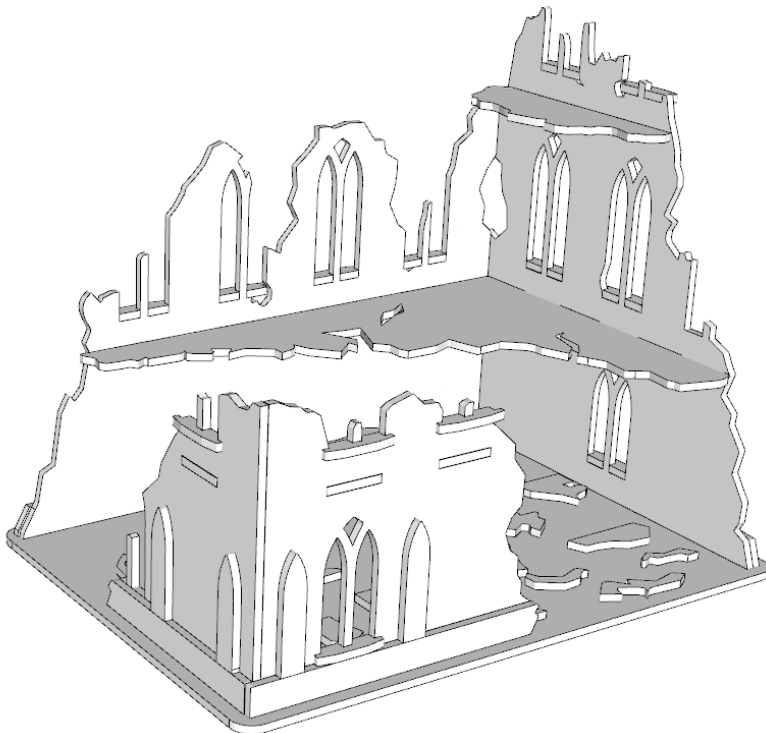
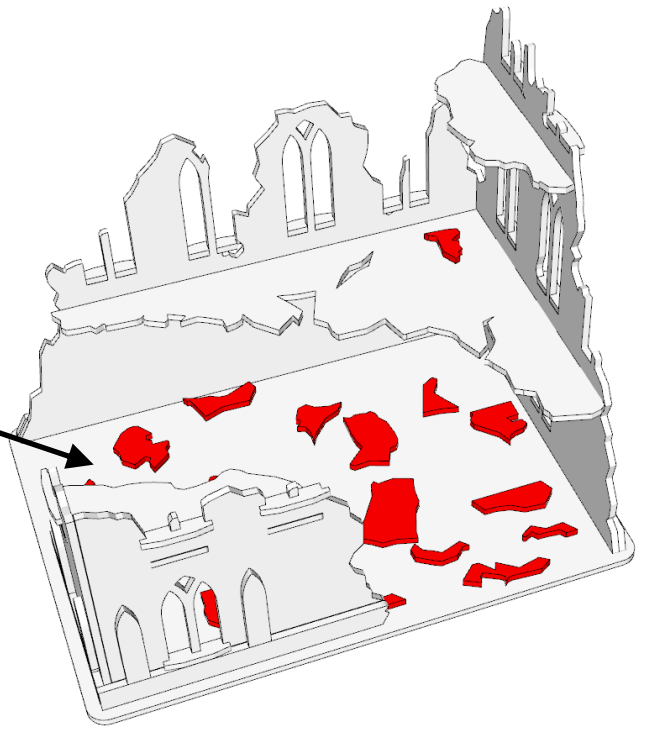




Side decorations are optional



*Use excess bits to
scatter around as ruins*



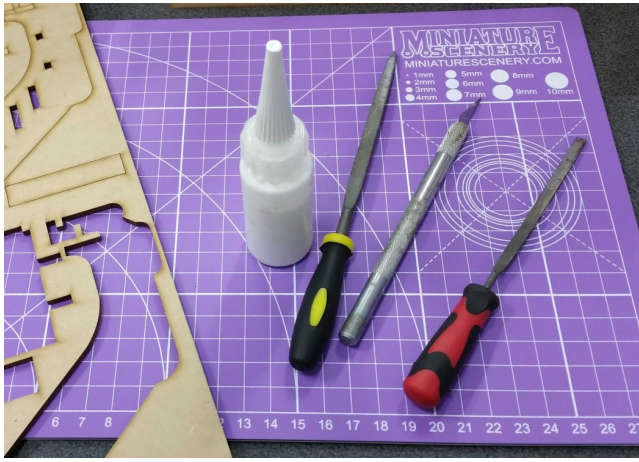
MINIATURE SCENERY

INSTRUCTIONS SIMPLE RUINS C

PREPARATION

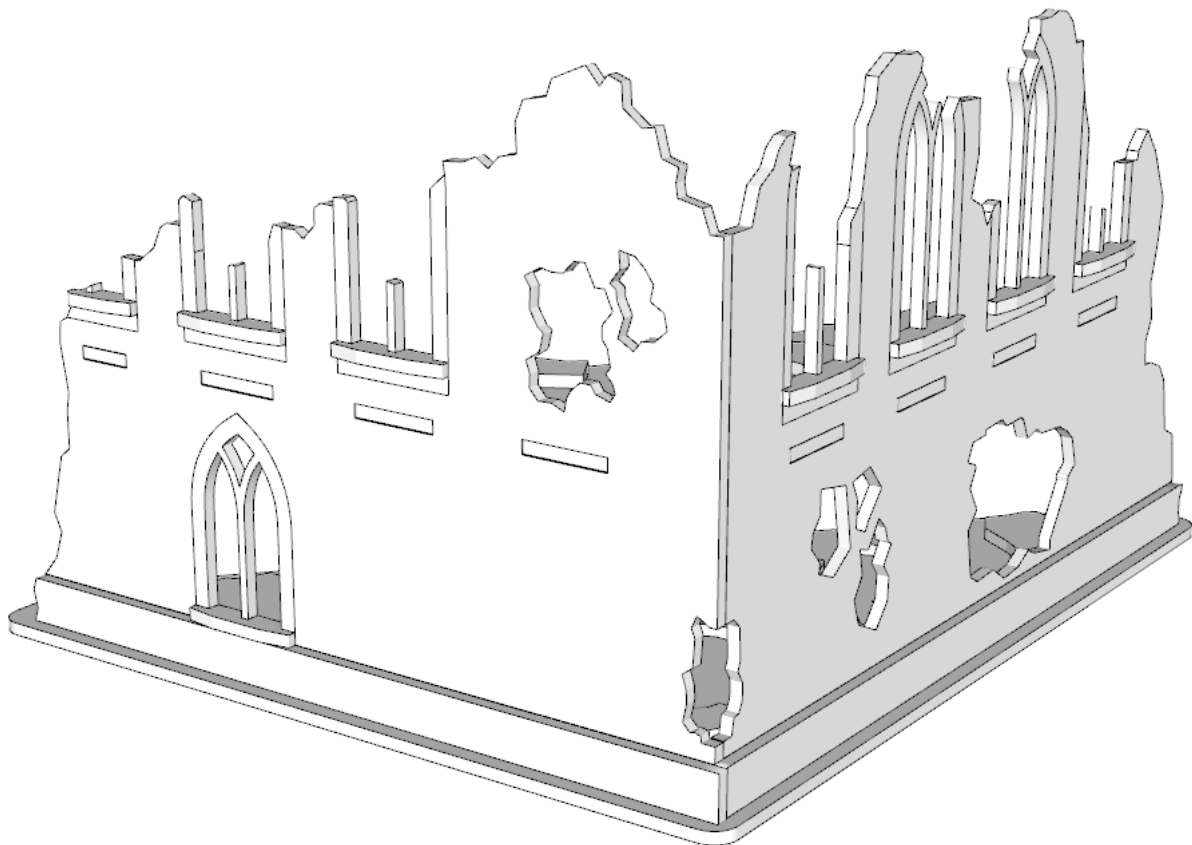
You will need:

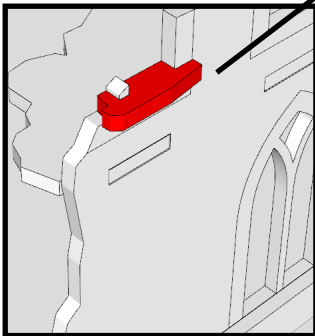
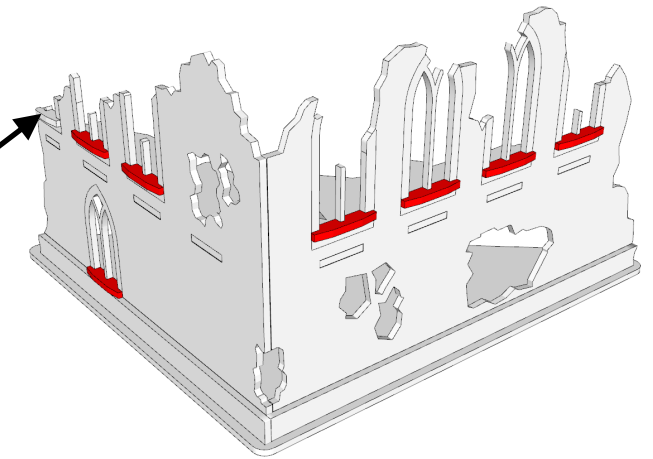
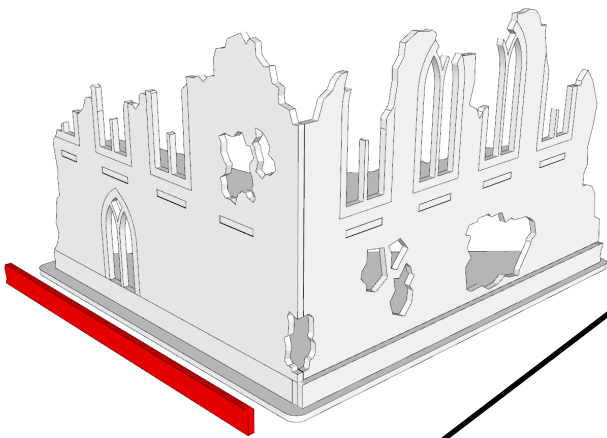
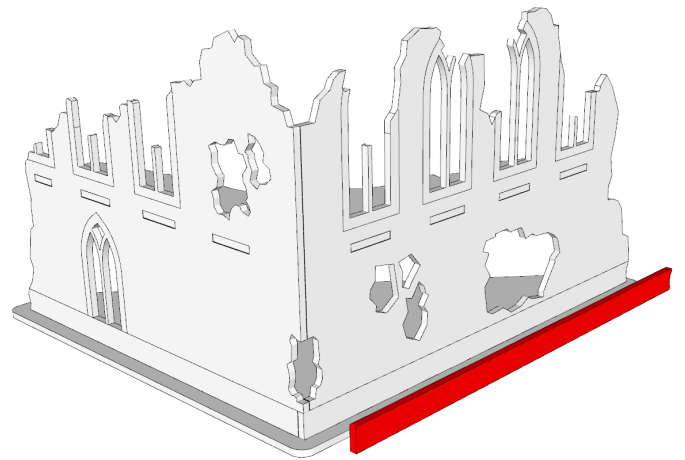
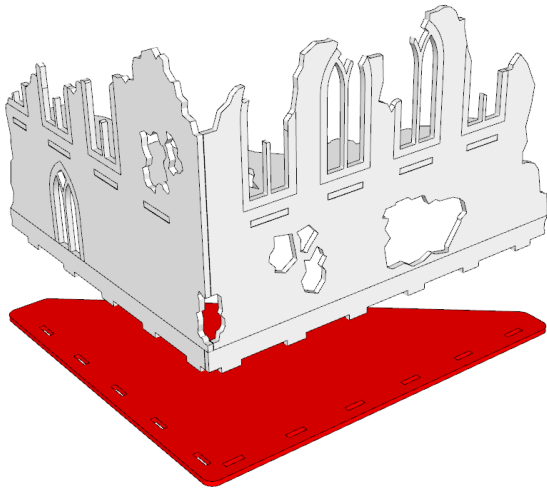
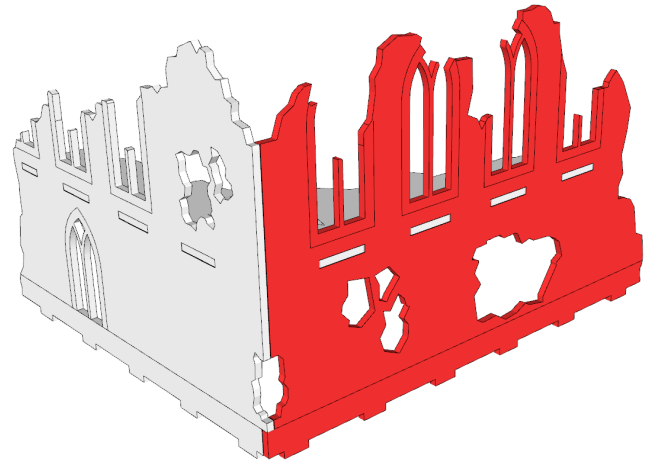
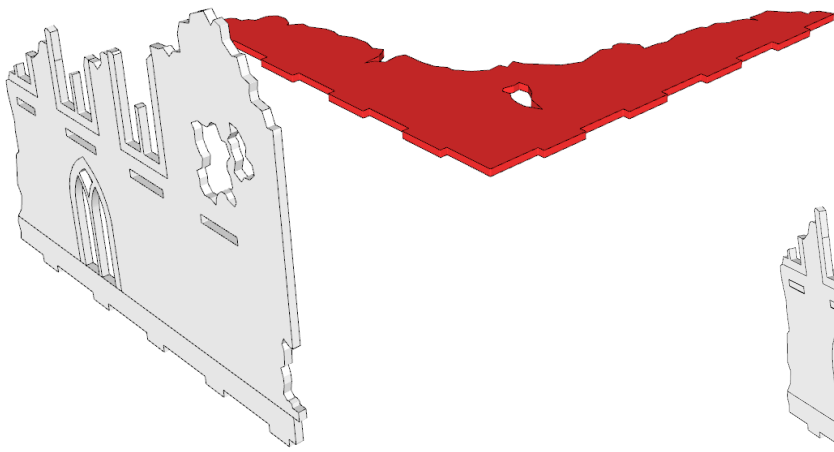
- Cutting mat or something to protect your table.
- PVA/Wood glue or superglue if you prefer.
- Small file or sand paper.
- Small blade / hobby knife



GENERAL PROCESS

- Clear plenty of table space, you will need it.
- Parts should remove easily from the board by pressing through and popping them out. It's a good idea to cut through the tiny joins first though, and some parts (particularly smaller, more detailed parts) may need more careful persuasion.
- Use file or sand paper to remove the small bur caused by the connection to the frame.
- It's a good idea to familiarise yourself with how the pieces fit together before gluing.
- Slot the parts together as shown by the pictures below, applying glue wherever there is a connection. (unless shown otherwise)
- Parts may be a very tight fit, slight trimming or sanding of parts may be needed for ease of assembly.





Ruined bits go anywhere

MINIATURE SCENERY

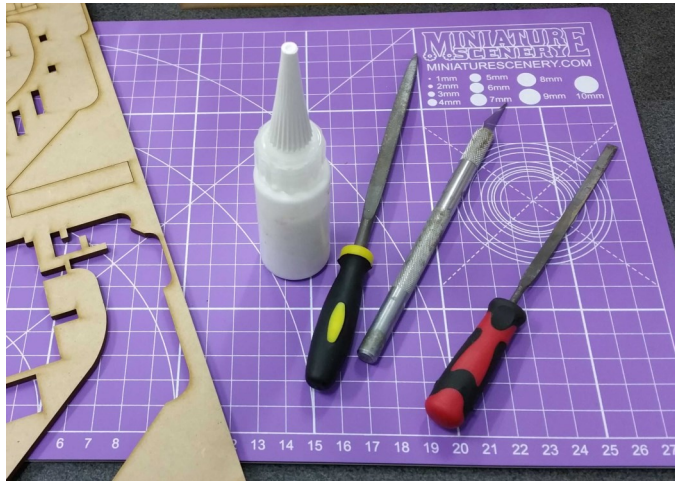
INSTRUCTIONS

AREA RUINS

PREPARATION

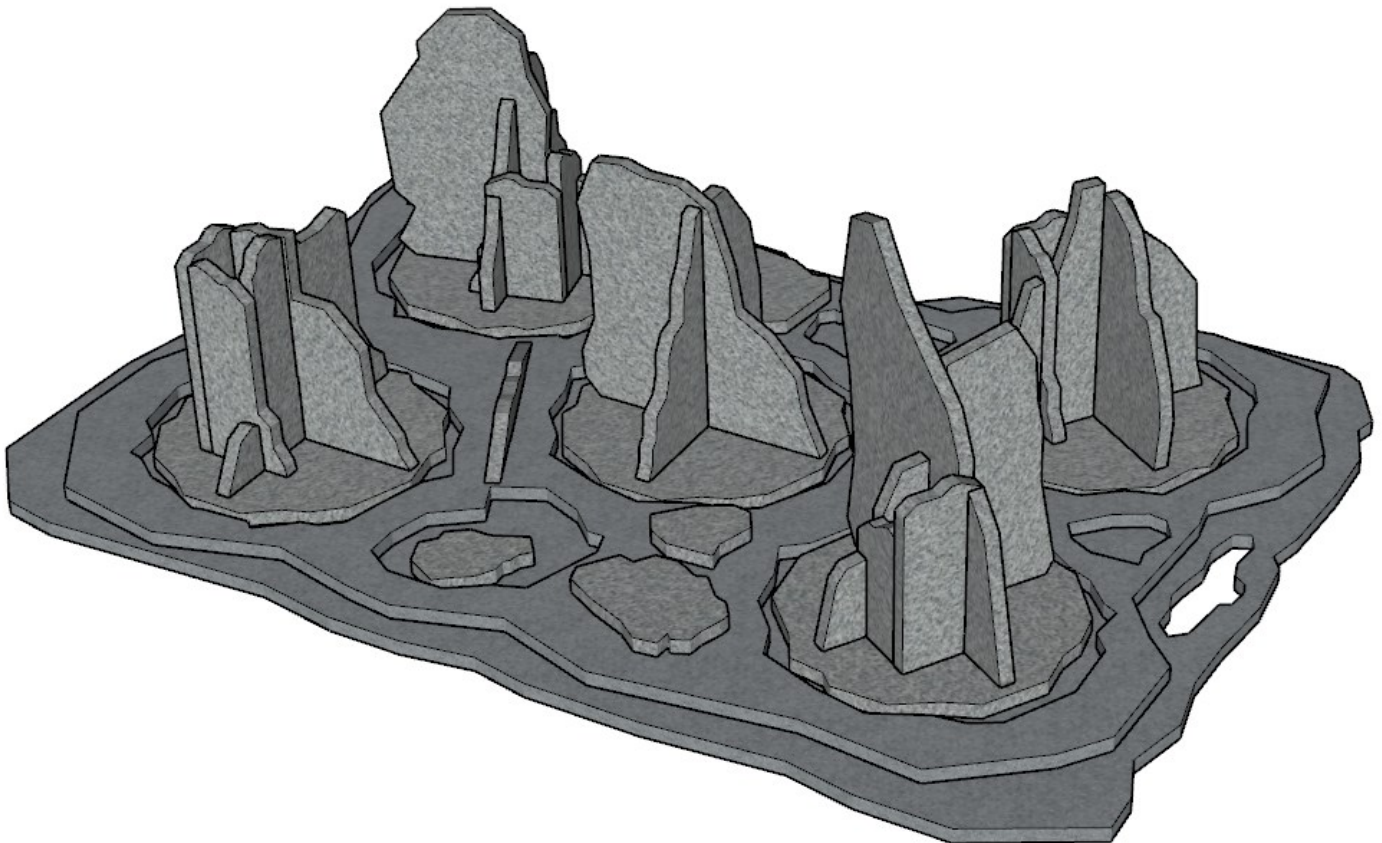
You will need:

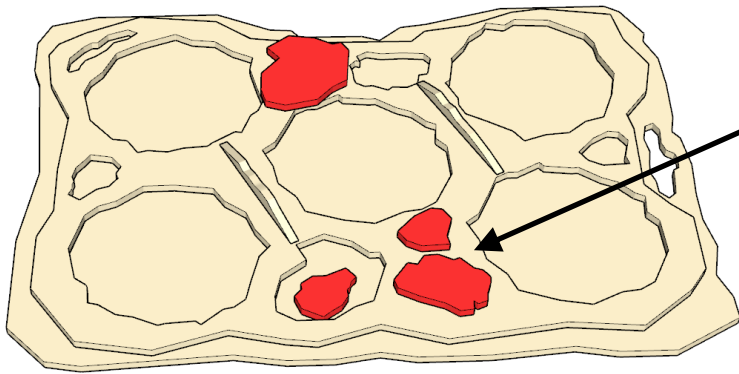
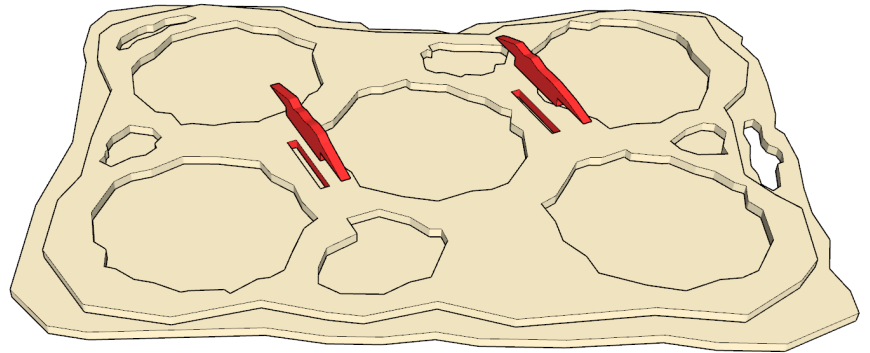
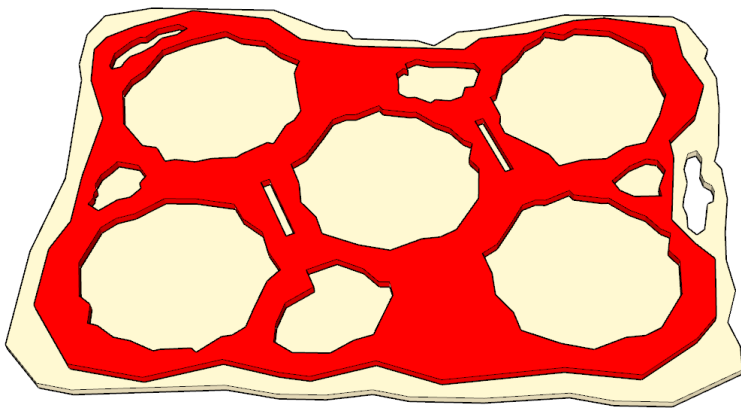
- Cutting mat or something to protect your table.
- PVA/Wood glue or superglue if you prefer.
- Small file or sand paper.
- Small blade / hobby knife



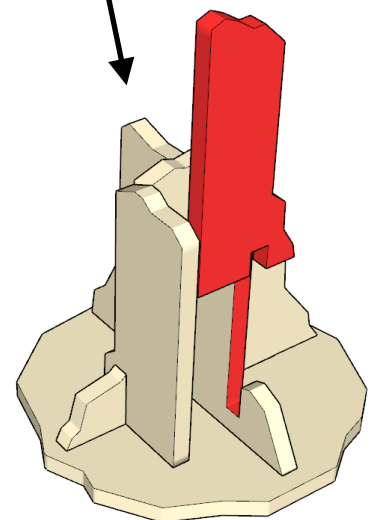
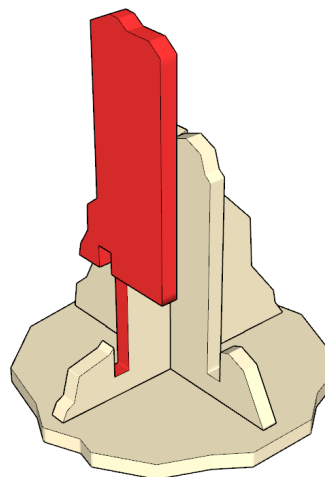
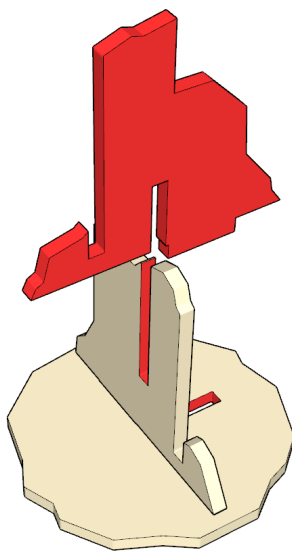
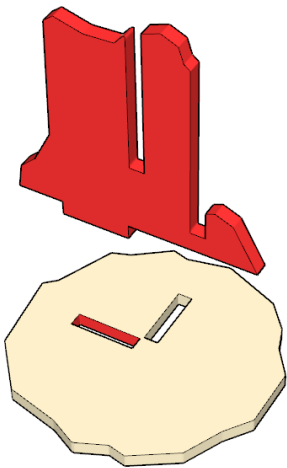
GENERAL PROCESS

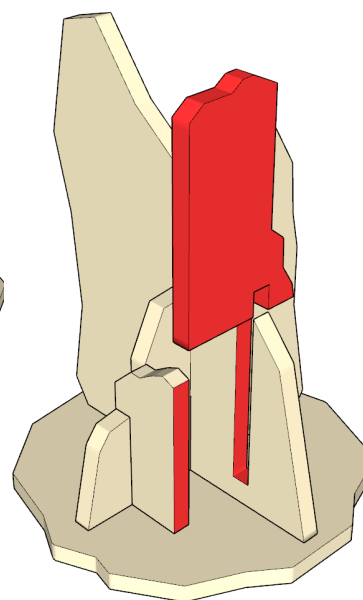
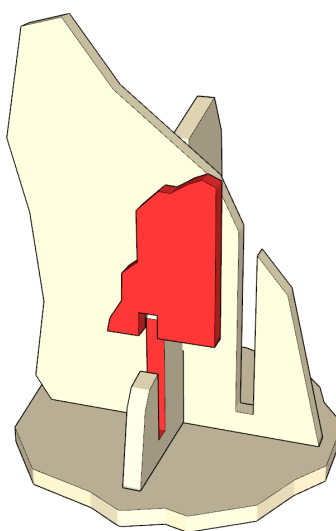
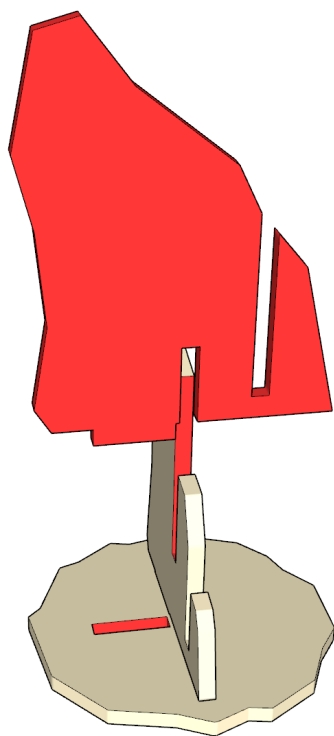
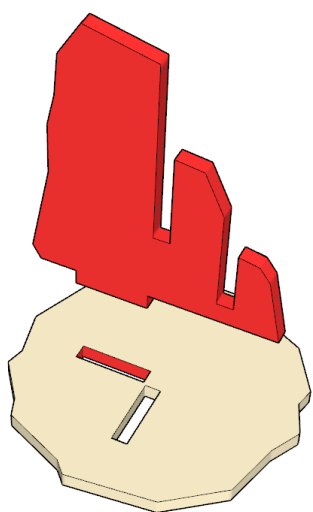
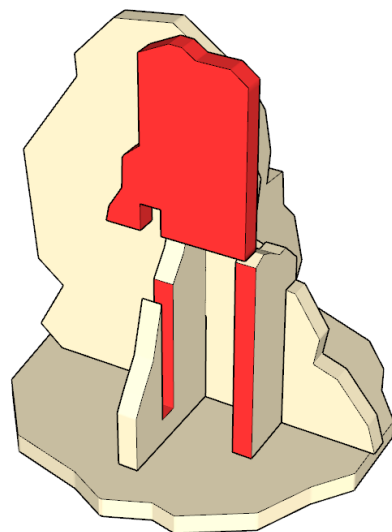
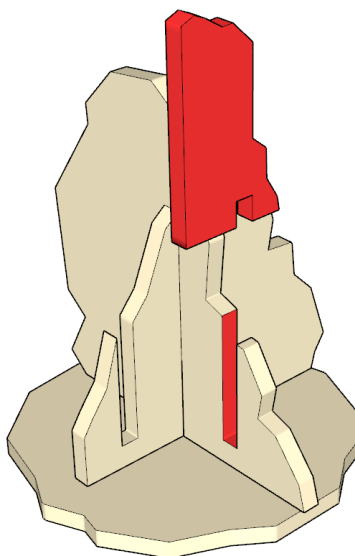
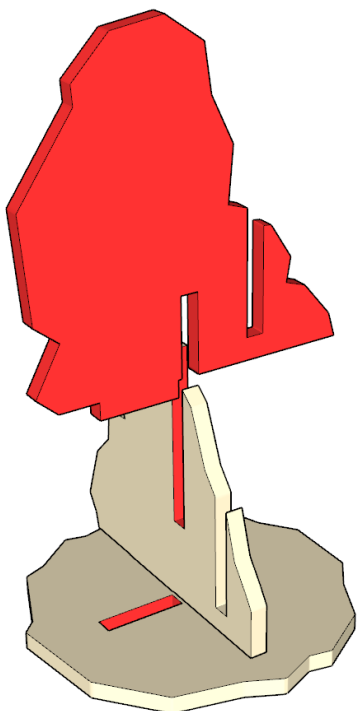
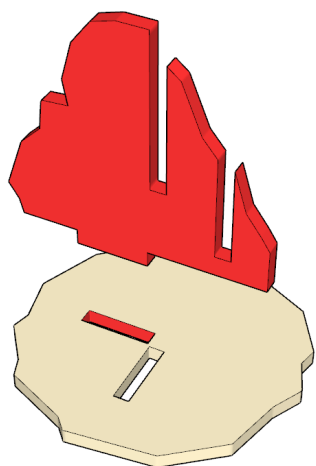
- Clear plenty of table space, you will need it.
- Parts should remove easily from the board by pressing through and popping them out. It's a good idea to cut through the tiny joins first though, and some parts (particularly smaller, more detailed parts) may need more careful persuasion.
- Use file or sand paper to remove the small bur caused by the connection to the frame.
- It's a good idea to familiarise yourself with how the pieces fit together before gluing.
- Slot the parts together as shown by the pictures below, applying glue wherever there is a connection. (unless shown otherwise)
- Parts may be a very tight fit, slight trimming or sanding of parts may be needed for ease of assembly.

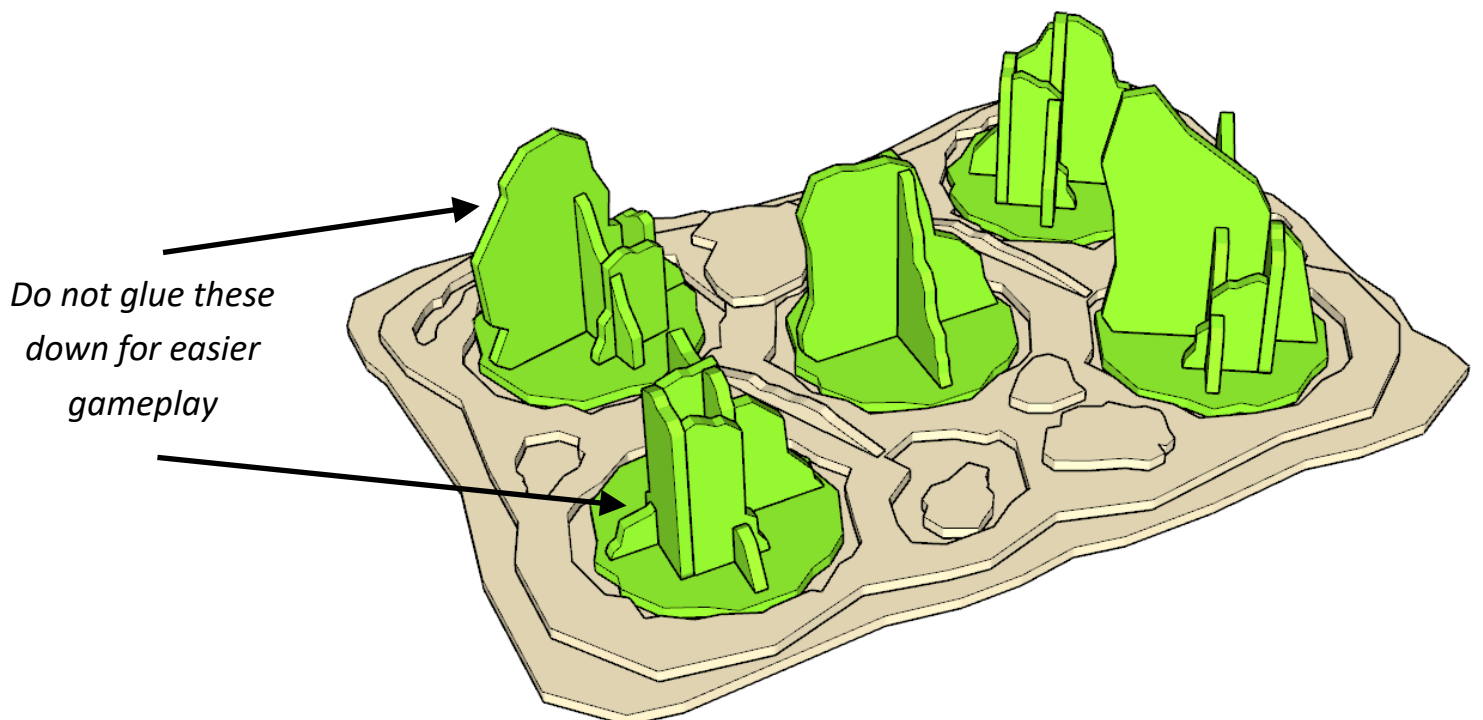
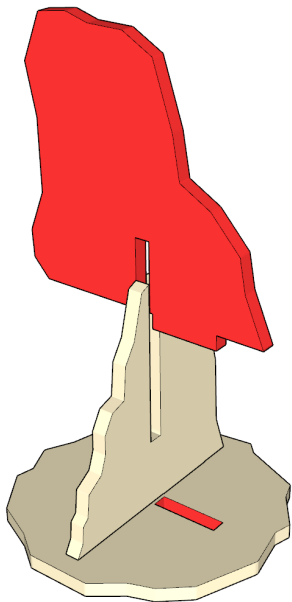
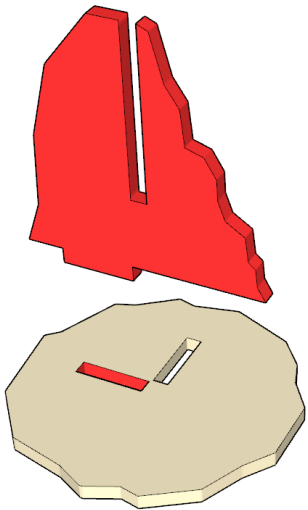
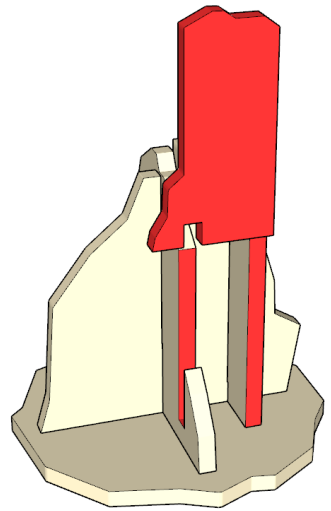
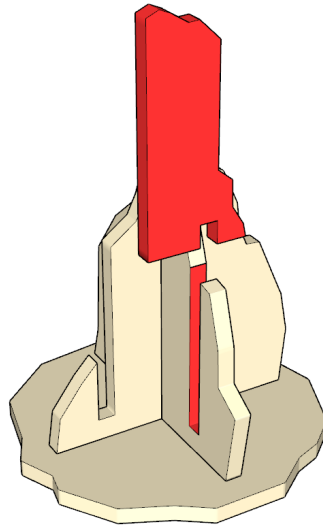
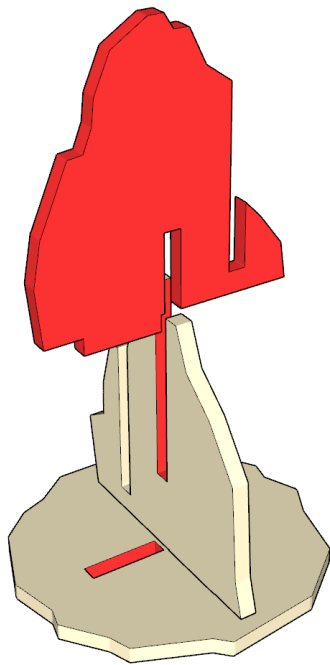
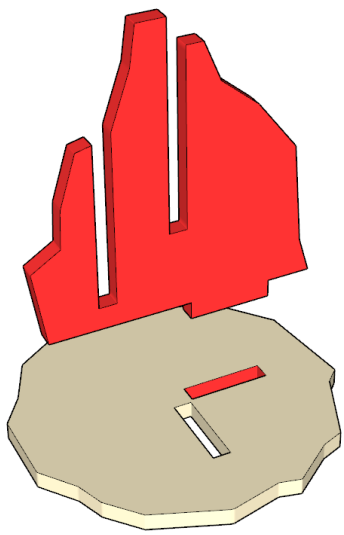




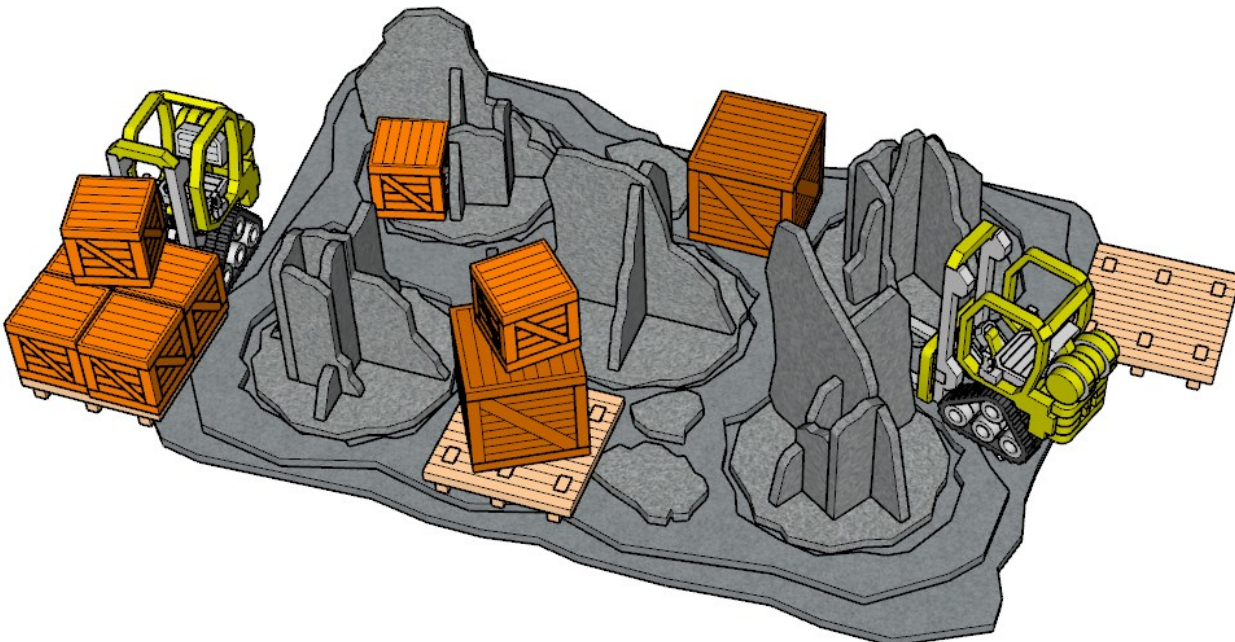
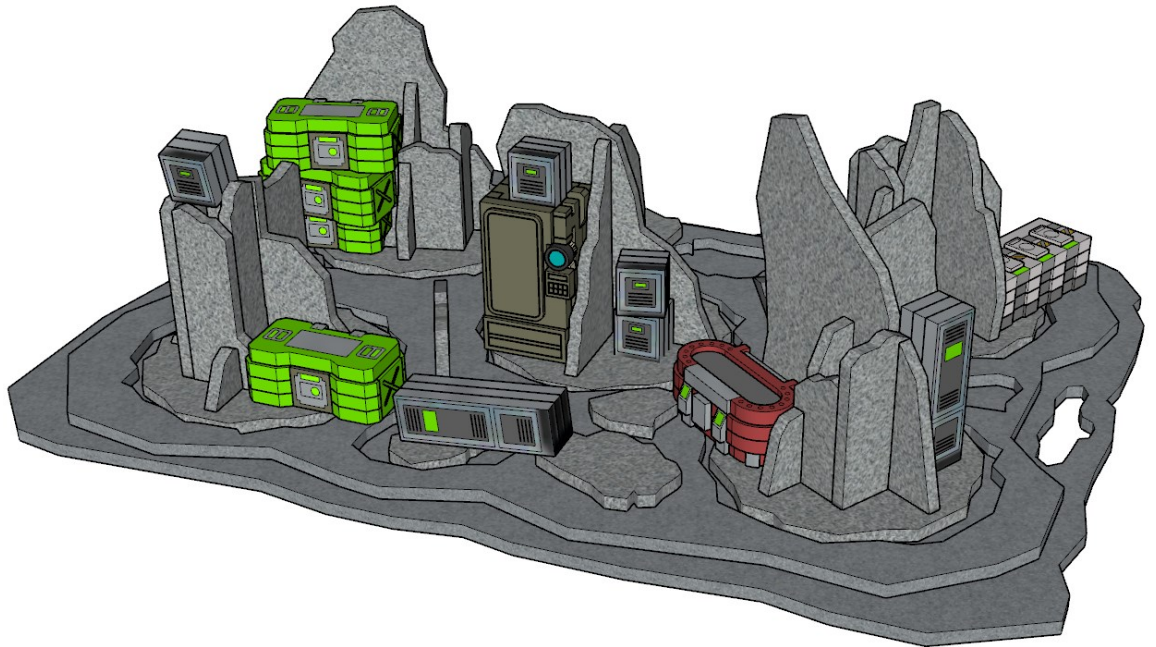
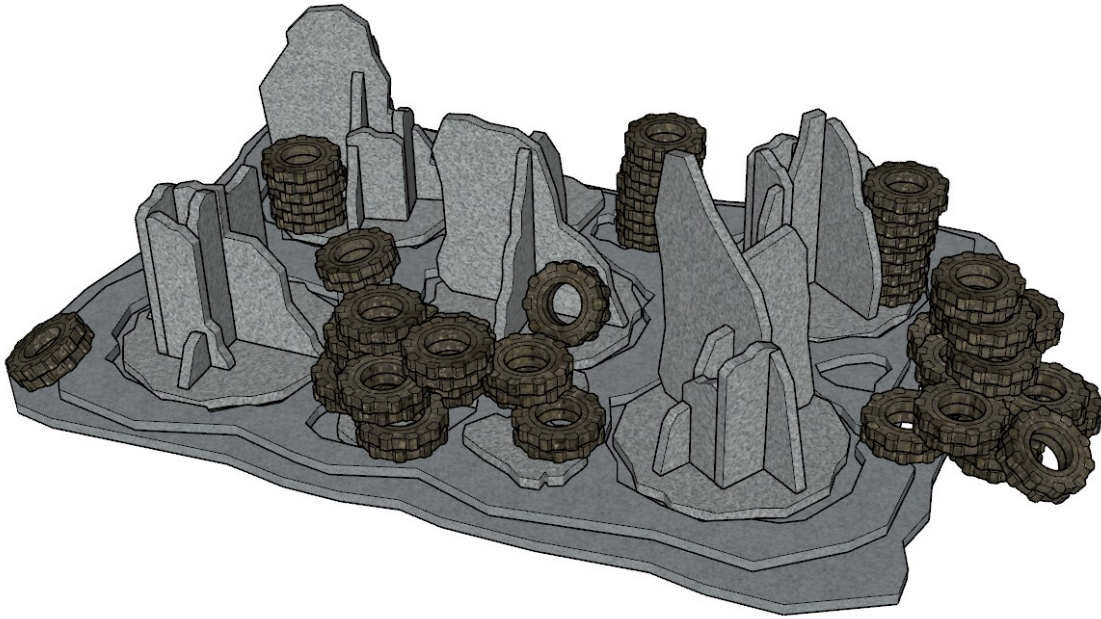
Extra bits of ruins can be glued anywhere. Even on the movable bits of ruins.







Make the area terrain more interesting by combining it with our other scatter terrain sets.



MINIATURE SCENERY

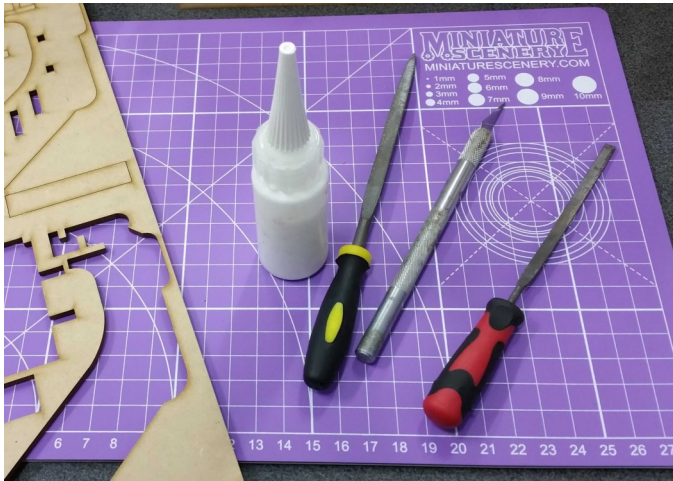
INSTRUCTIONS

SIMPLE CONTAINERS

PREPARATION

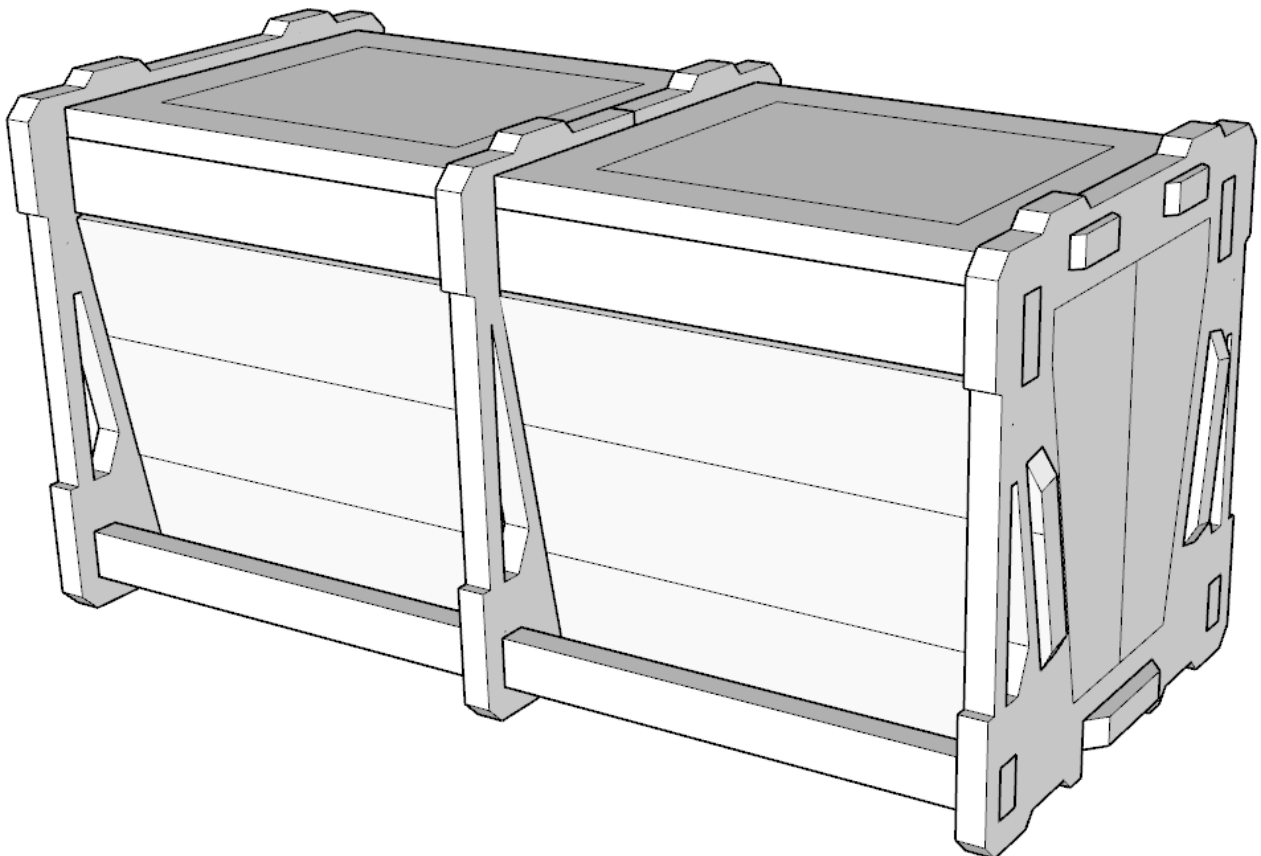
You will need:

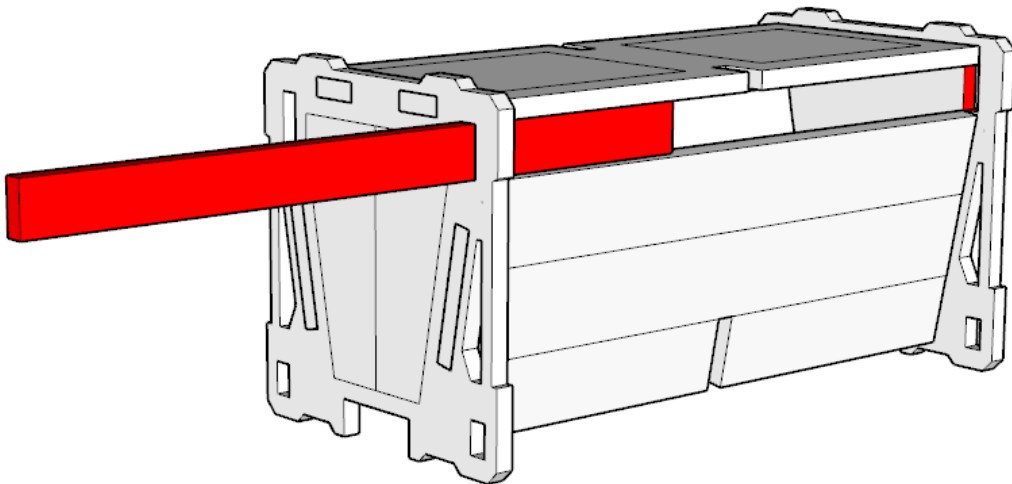
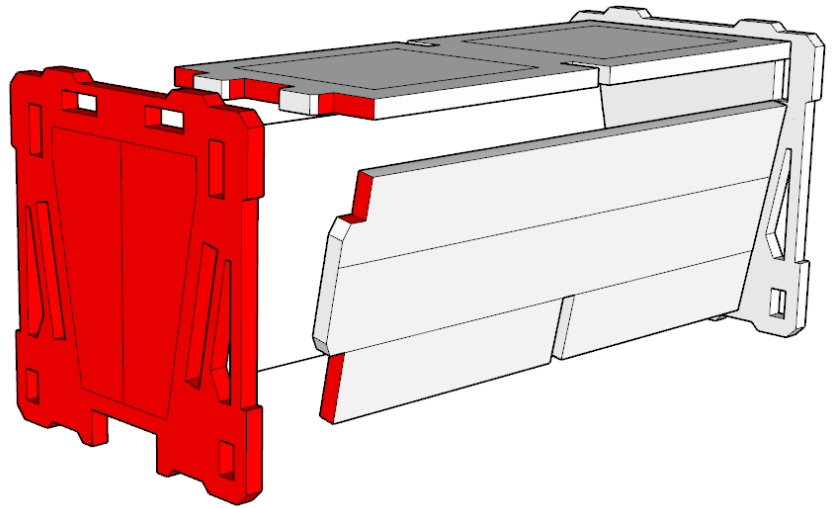
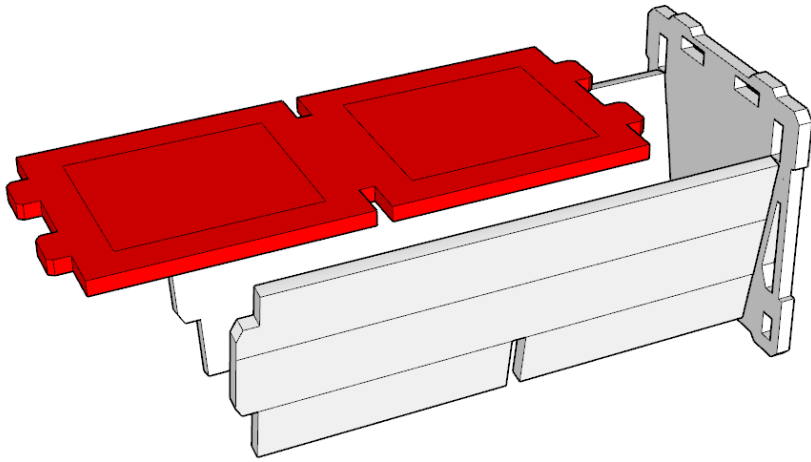
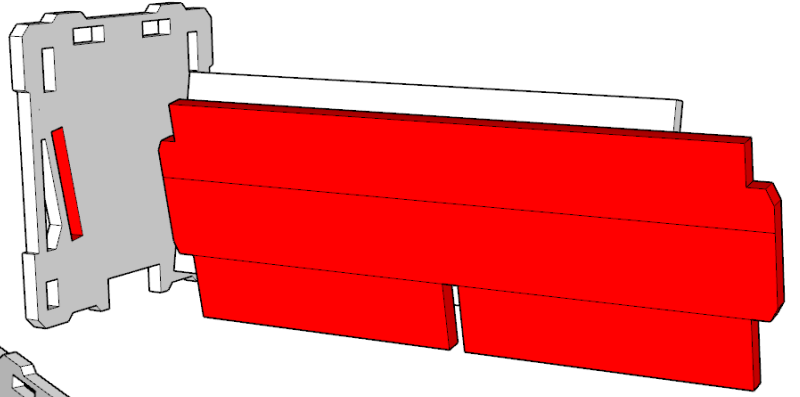
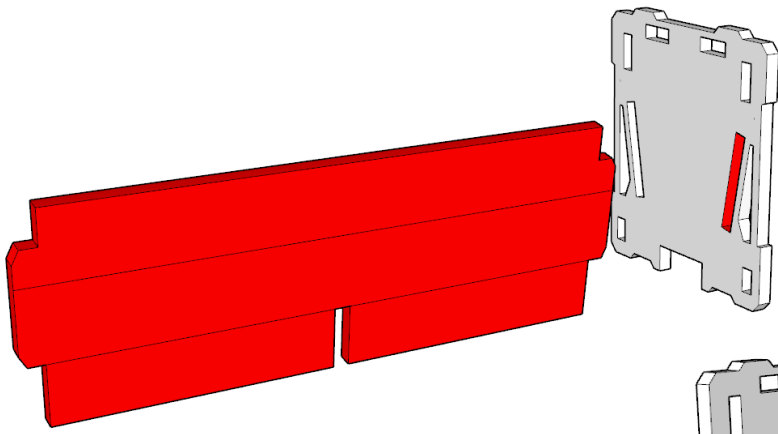
- Cutting mat or something to protect your table.
- PVA/Wood glue or superglue if you prefer.
- Small file or sand paper.
- Small blade / hobby knife

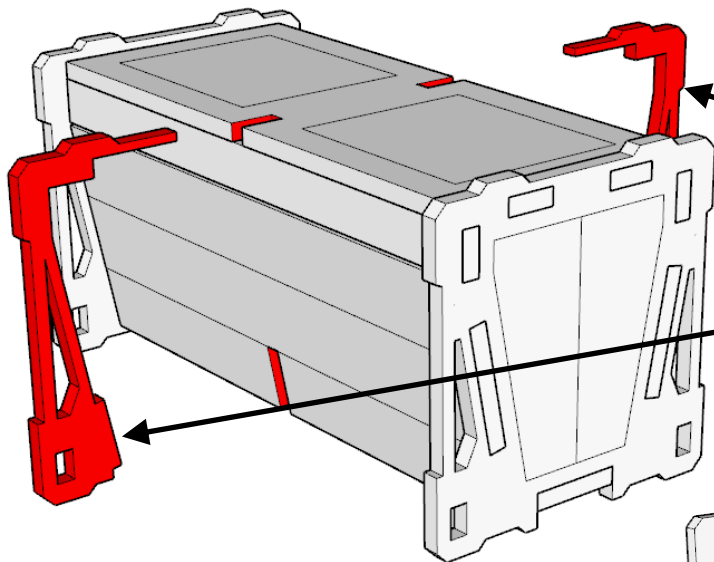
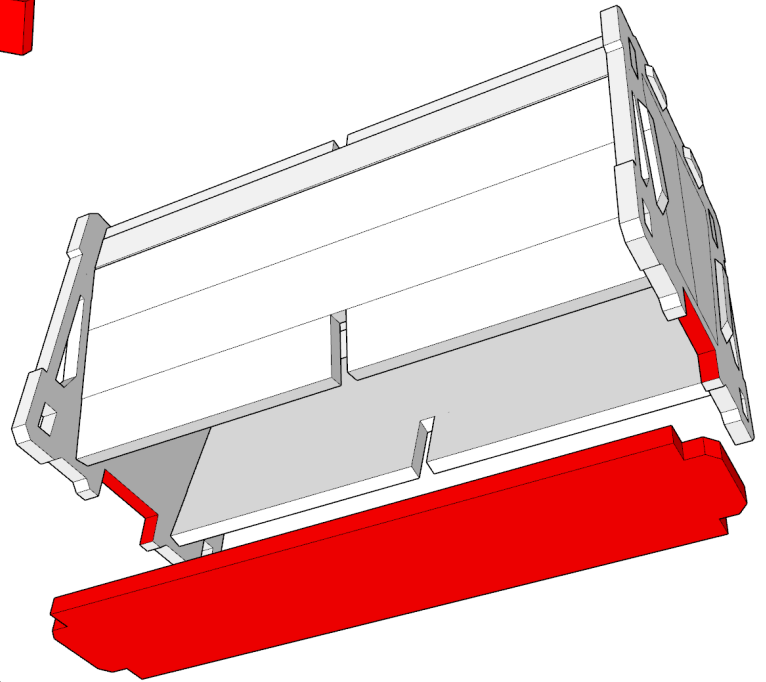
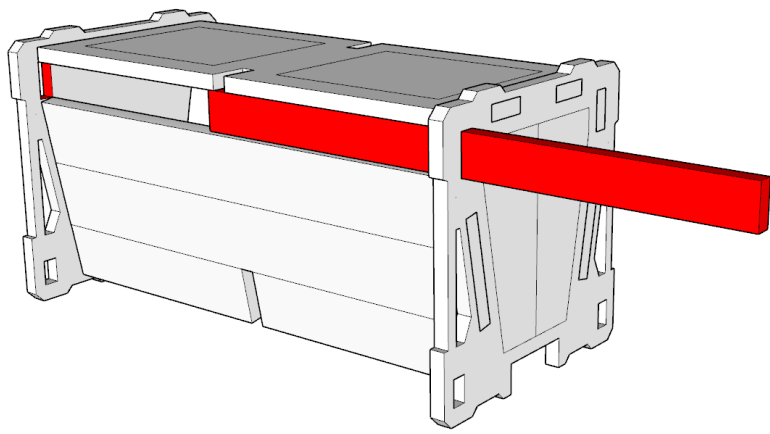


GENERAL PROCESS

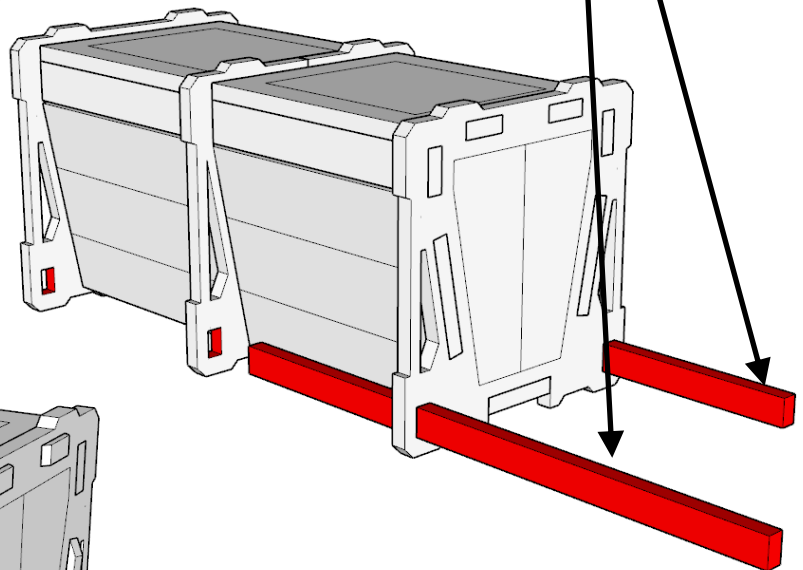
- Clear plenty of table space, you will need it.
- Parts should remove easily from the board by pressing through and popping them out. It's a good idea to cut through the tiny joins first though, and some parts (particularly smaller, more detailed parts) may need more careful persuasion.
- Use file or sand paper to remove the small bur caused by the connection to the frame.
- It's a good idea to familiarise yourself with how the pieces fit together before gluing.
- Slot the parts together as shown by the pictures below, applying glue wherever there is a connection. (unless shown otherwise)
- Parts may be a very tight fit, slight trimming or sanding of parts may be needed for ease of assembly.







Both sides



Done!

