

INSTRUCTIONS

Tavern

Preparation - What you need

- Some table space
- Small pair of **Cutters**
- **PVA glue** (wood glue, hobby glue etc)
- A **file** or small piece of **sandpaper** (used to remove any tab stubs that *may* remain after being clipped by the cutters).

Construction

- Use cutters to separate the parts from the panel.
- Go over each part again with the cutters to completely remove the tabs (you should only need the file or sandpaper for minor cleaning touch-ups).
- Use a file or sand paper last to clean any remaining tab fragments.

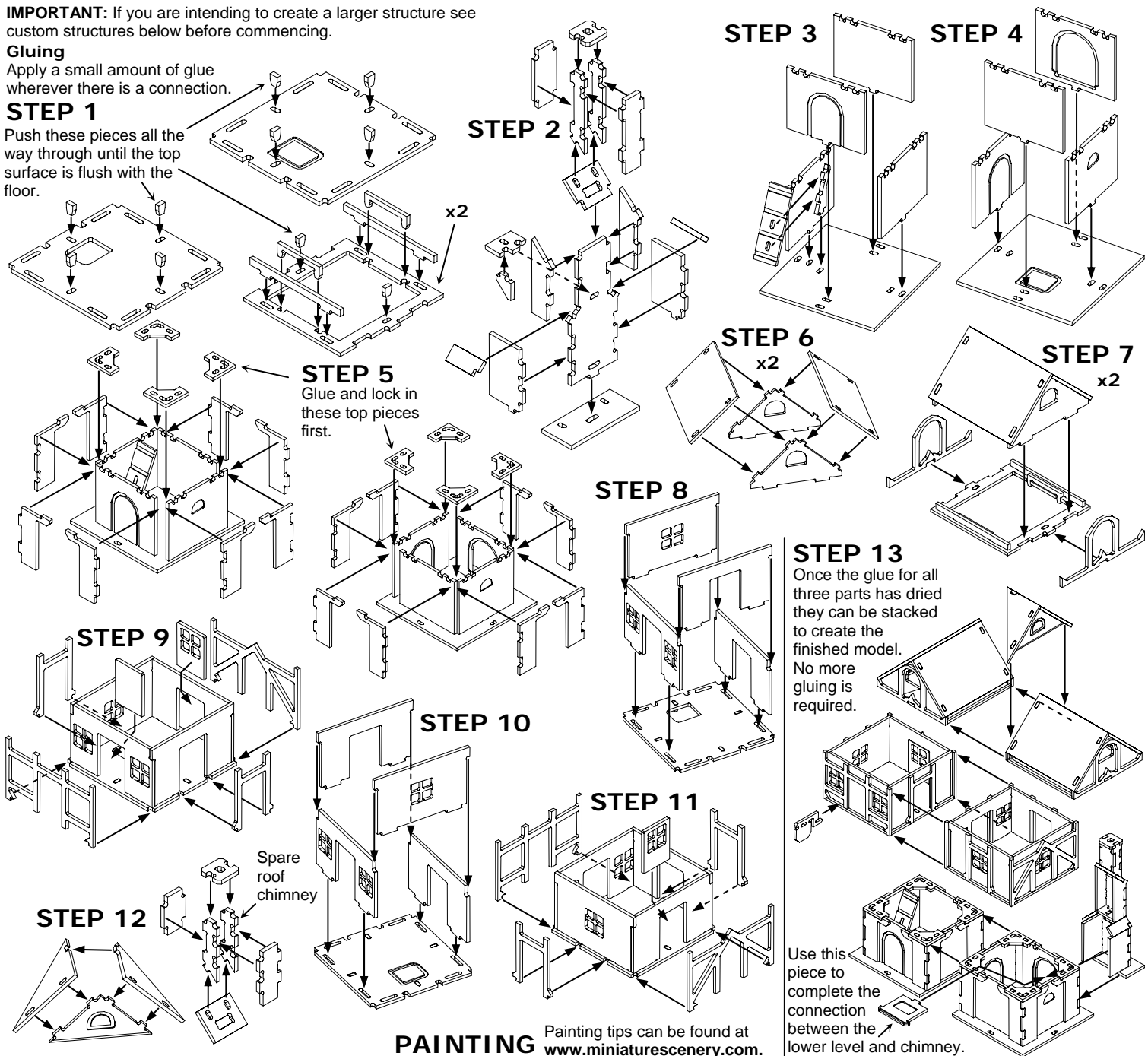
IMPORTANT: If you are intending to create a larger structure see custom structures below before commencing.

Gluing

Apply a small amount of glue wherever there is a connection.

STEP 1

Push these pieces all the way through until the top surface is flush with the floor.

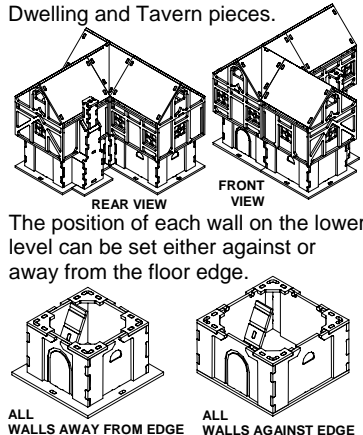


PAINTING

Painting tips can be found at www.miniaturescenery.com.

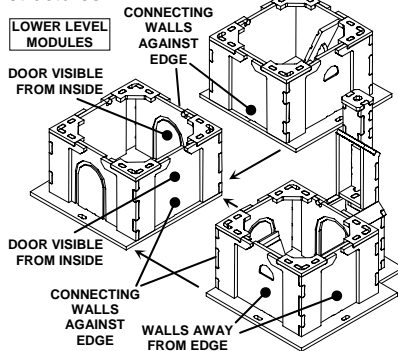
Custom structures

This section shows how a large structure can be created from the Dwelling and Tavern pieces.



The position of each wall on the lower level can be set either against or away from the floor edge.

Lower level modules can be seamlessly joined to create custom layouts of large structures.

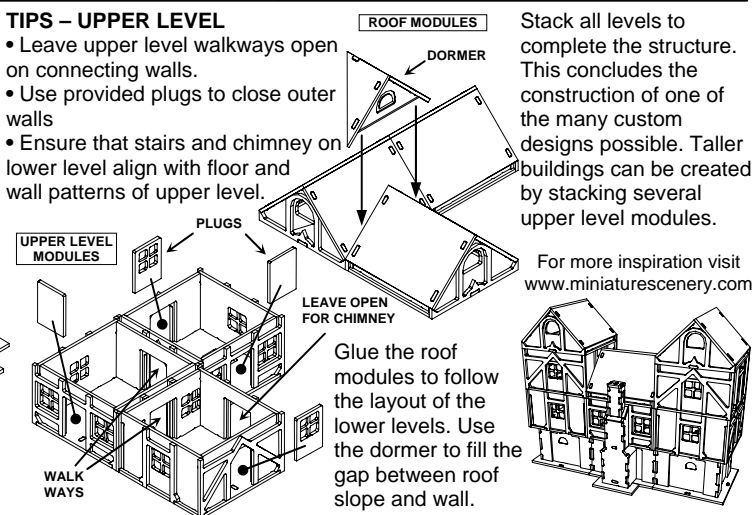


TIP - LOWER LEVEL

- Ensure that doors on connecting walls are visible from the inside

TIPS - UPPER LEVEL

- Leave upper level walkways open on connecting walls.
- Use provided plugs to close outer walls
- Ensure that stairs and chimney on lower level align with floor and wall patterns of upper level.



Stack all levels to complete the structure. This concludes the construction of one of the many custom designs possible. Taller buildings can be created by stacking several upper level modules.

For more inspiration visit www.miniaturescenery.com

Glue the roof modules to follow the layout of the lower levels. Use the dormer to fill the gap between roof slope and wall.