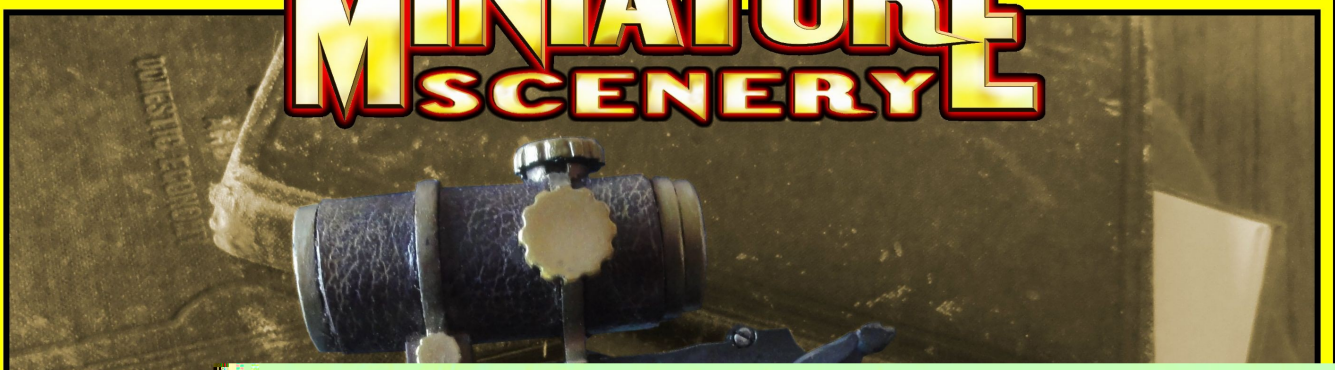


CNC WORKSHOP®

MINIATURE SCENERY



MOUSEMUFFINS PLASMATIC GATTLINGER

MINIATURE SCENERY MODELS ARE DESIGNED FOR 25MM (1 INCH) BASE MINIATURES, IDEAL FOR GAMERS AND COLLECTORS.

PAINTING IS NEEDED FOR BEST RESULTS.

THIS MODEL IS THE FIRST LIFE HOLDABLE PROP MADE BY CNC WORKSHOP. BARRELS USE HEX SHAPED PENCILS AND THE SCOP

PAINTING TERRAIN.

ALL INSTRUCTIONS AVAILABLE

AVAILABLE ONLINE AT [HTTP://WWW.MINIATURESCENERY.COM](http://WWW.MINIATURESCENERY.COM)



ADMINISTRATION BLOCK



STEALTH TRV



STAR WORM



STREET SCRAMBLE



MINIATURE SCENERY

Mousemuffins Plasmatic Gattlinger.

Preparation

Once you clear some table space you will need a hobby knife and glue (PVA, wood glue, hobby glue) and a file or small piece of sandpaper to be used for cleaning up any tiny imperfections.

It's a good idea to familiarise yourself with how the pieces fit together before gluing.

Getting Started

- I. Parts should remove easily from the board by pressing through and popping them out. It's a good idea to cut through the tiny joins first though, and some parts (particularly smaller, more detailed parts) may need more careful persuasion.
- II. Use a file or sand paper last to completely remove the tabs that might remain.
- III. Parts may be a very tight fit, slight trimming or sanding of parts may be needed for ease of assembly.

Construction

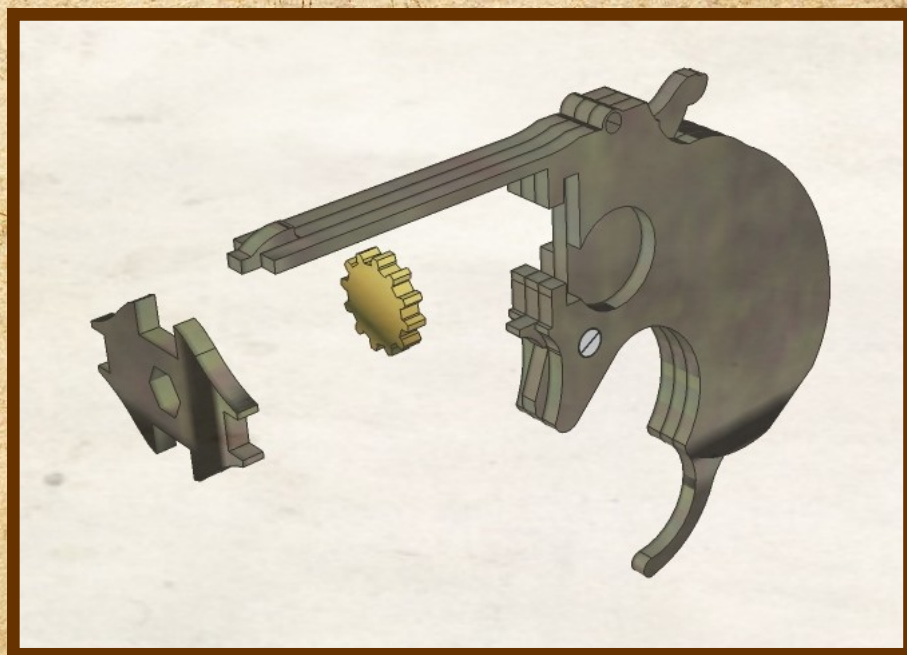
Slot the parts together as shown by the pictures below, applying glue wherever there is a connection.

Allow the model to completely dry before painting it. This is a complex kit with many small parts. Allowing each section to dry thoroughly before heading to the next is strongly recommended.



Some parts of this kit are very fine, or have engraving very close to edges. Make sure you cut through any tabs carefully with a hobby knife first to avoid damage.

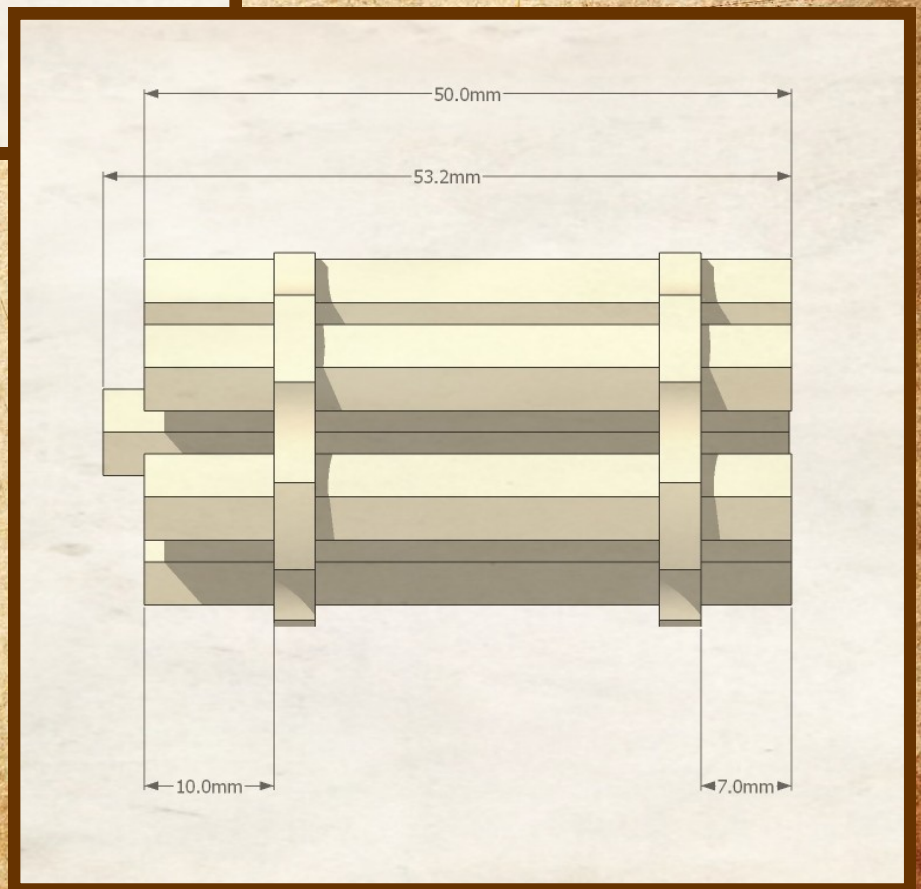
MINIATURE SCENERY



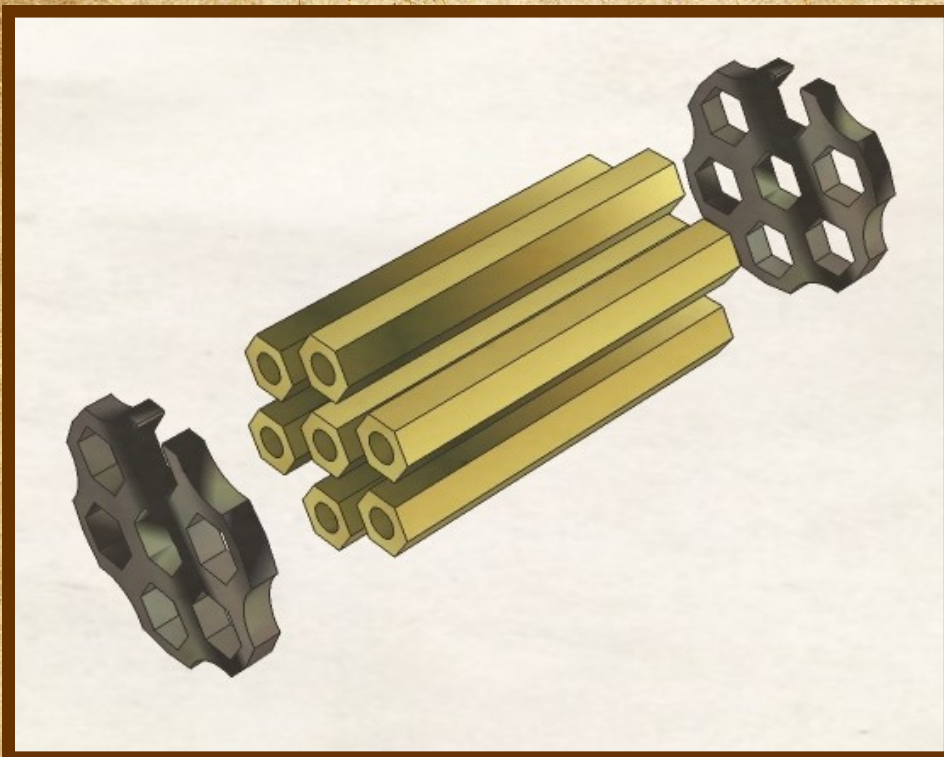
MINIATURE SCENERY



After Gluing the grip halves together, file and sand to shape.



MINIATURE SCENERY



The barrels should be formed from pencils, cut to length. Drilling out the ends will also improve the look.

Note: because pencils can vary a bit in thickness, three different sizes of barrel brace have been supplied.



MINIATURE SCENERY



MINIATURE SCENERY



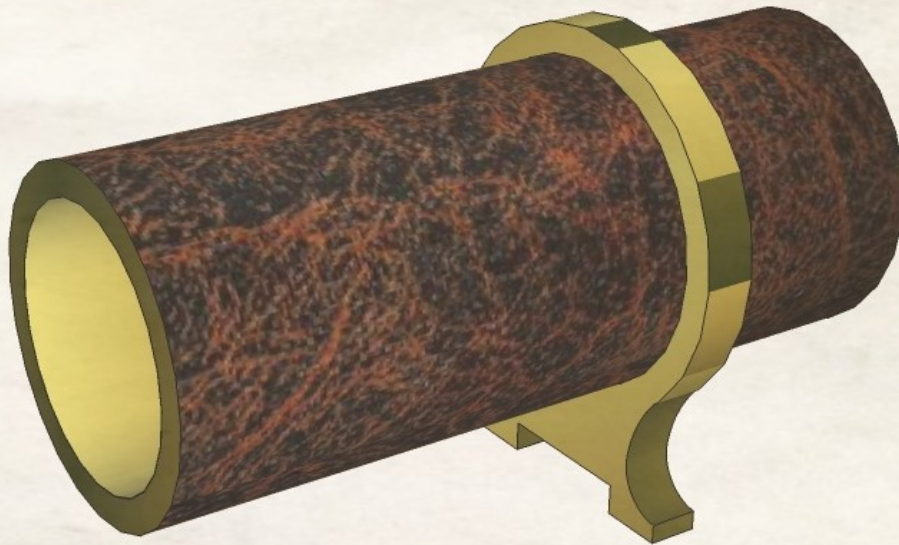
MINIATURE SCENERY



MINIATURE SCENERY



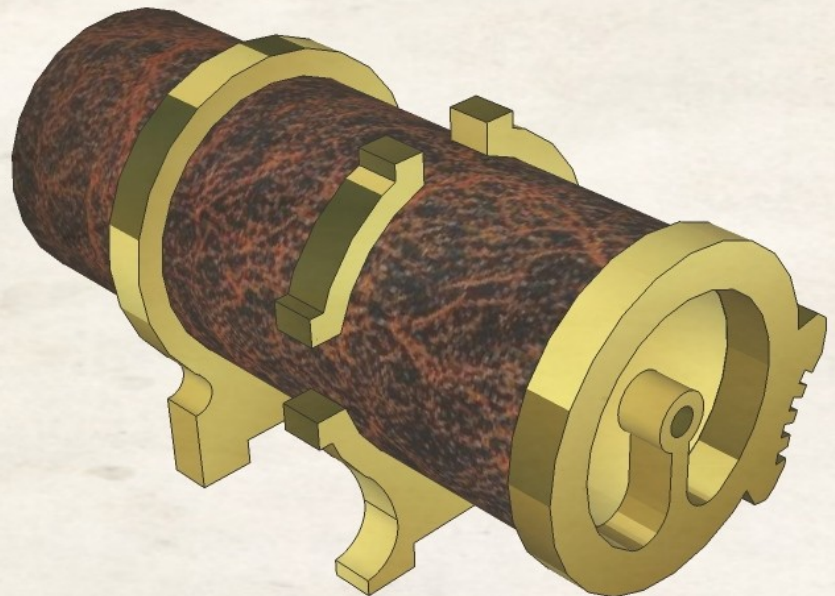
MINIATURE SCENERY



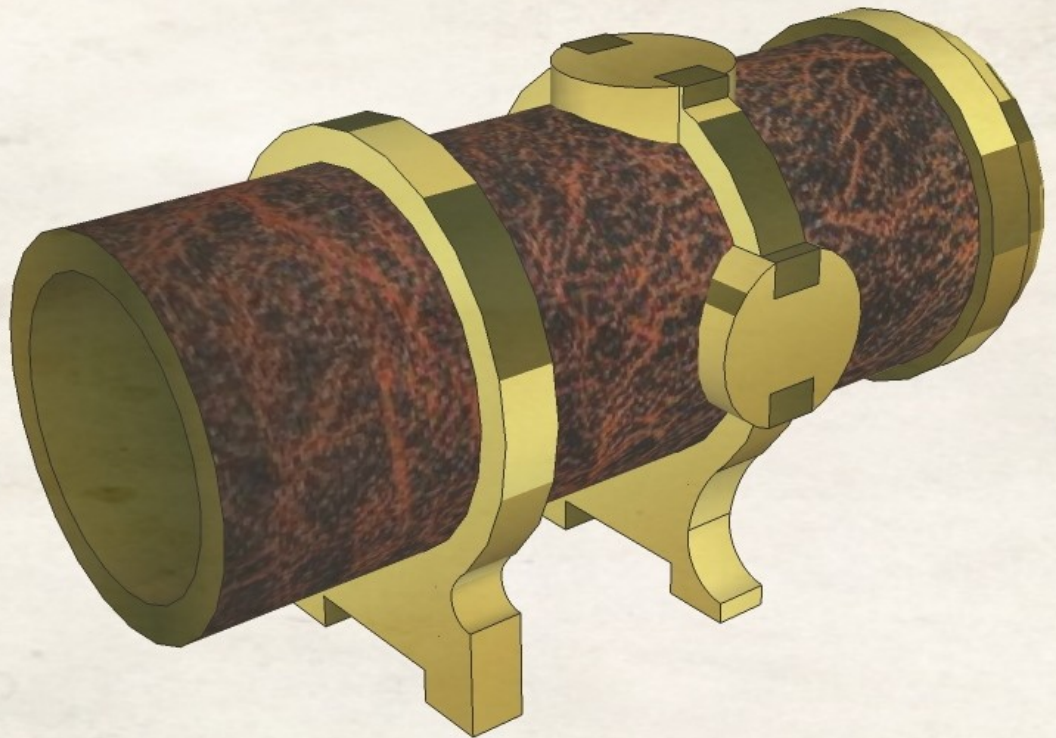
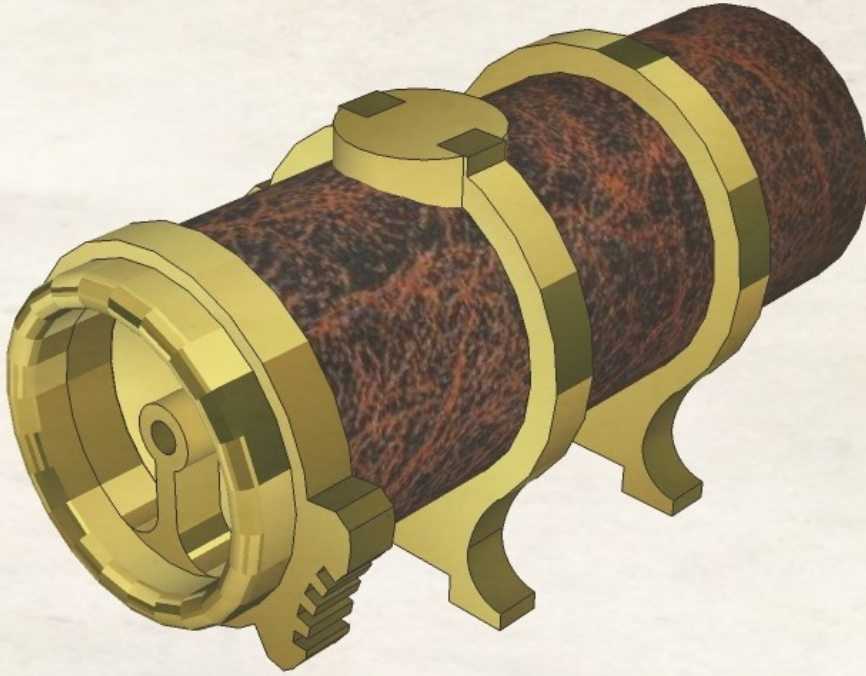
*Tube
Length
50mm.*

*The scope tube
has been made
from a short
length of pvc
pipe, 22mm in
diameter.*

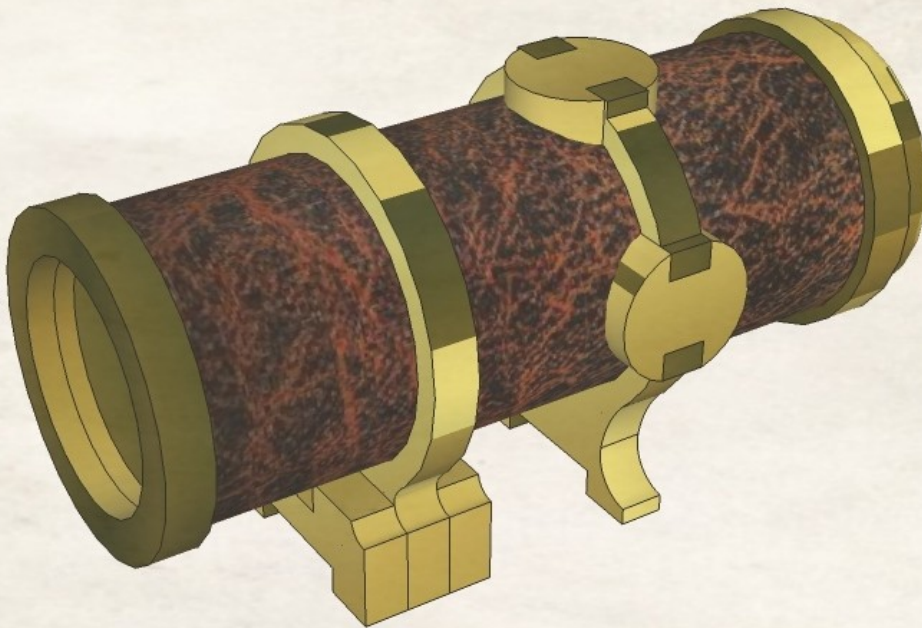
*A small strip of
old leather has
been glued on as
a finishing touch.*



MINIATURE SCENERY



MINIATURE SCENERY



MINIATURE SCENERY

