

# MINIATURE SCENERY



Model supplied unpainted and unassembled

## STEEL WORM

MINIATURE SCENERY MODELS ARE DESIGNED FOR 25MM (1 INCH) BASE MINIATURES, IDEAL FOR GAMERS AND COLLECTORS.

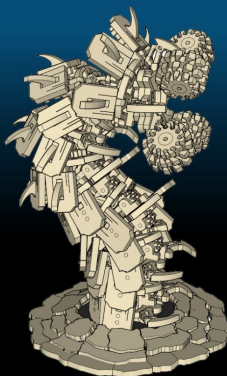
AT [WWW.MINIATURESCENERY.COM](http://WWW.MINIATURESCENERY.COM) WE PROVIDE DETAILED AND EASY TO FOLLOW ILLUSTRATED GUIDES FOR PAINTING TERRAIN.

THE EARTH SHAKES AND YOU HEAR THE GRINDING OF TOUTURED ROCK.

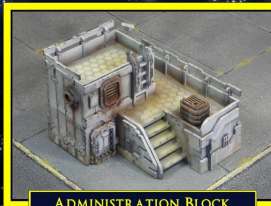
THOSE ARE THE ONLY WARNINGS OF A STEEL WORM ATTACK.

THIS MODEL IS DESIGNED FOR USE AS TERRAIN OR A UNIQUE PLAYING PIECE.

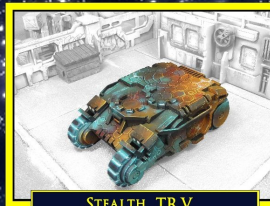
ALL INSTRUCTIONS AVAILABLE ONLINE AT [HTTP://WWW.MINIATURESCENERY.COM](http://WWW.MINIATURESCENERY.COM)



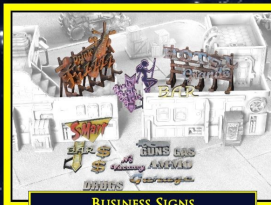
ENCLOSED COMPONENTS AFTER ASSEMBLY



ADMINISTRATION BLOCK



STEALTH TRV



BUSINESS SIGNS



STREET SCENERY 1





## Preparation

Once you clear some table space you will need a hobby knife and glue (PVA, wood glue, hobby glue) and a file or small piece of sandpaper to be used for cleaning up any tiny imperfections.

It's a good idea to familiarise yourself with how the pieces fit together before gluing.

## Getting Started

I. Parts should remove easily from the board by pressing through and popping them out. It's a good idea to cut through the tiny joins first though, and some parts (particularly smaller, more detailed parts) may need more careful persuasion.

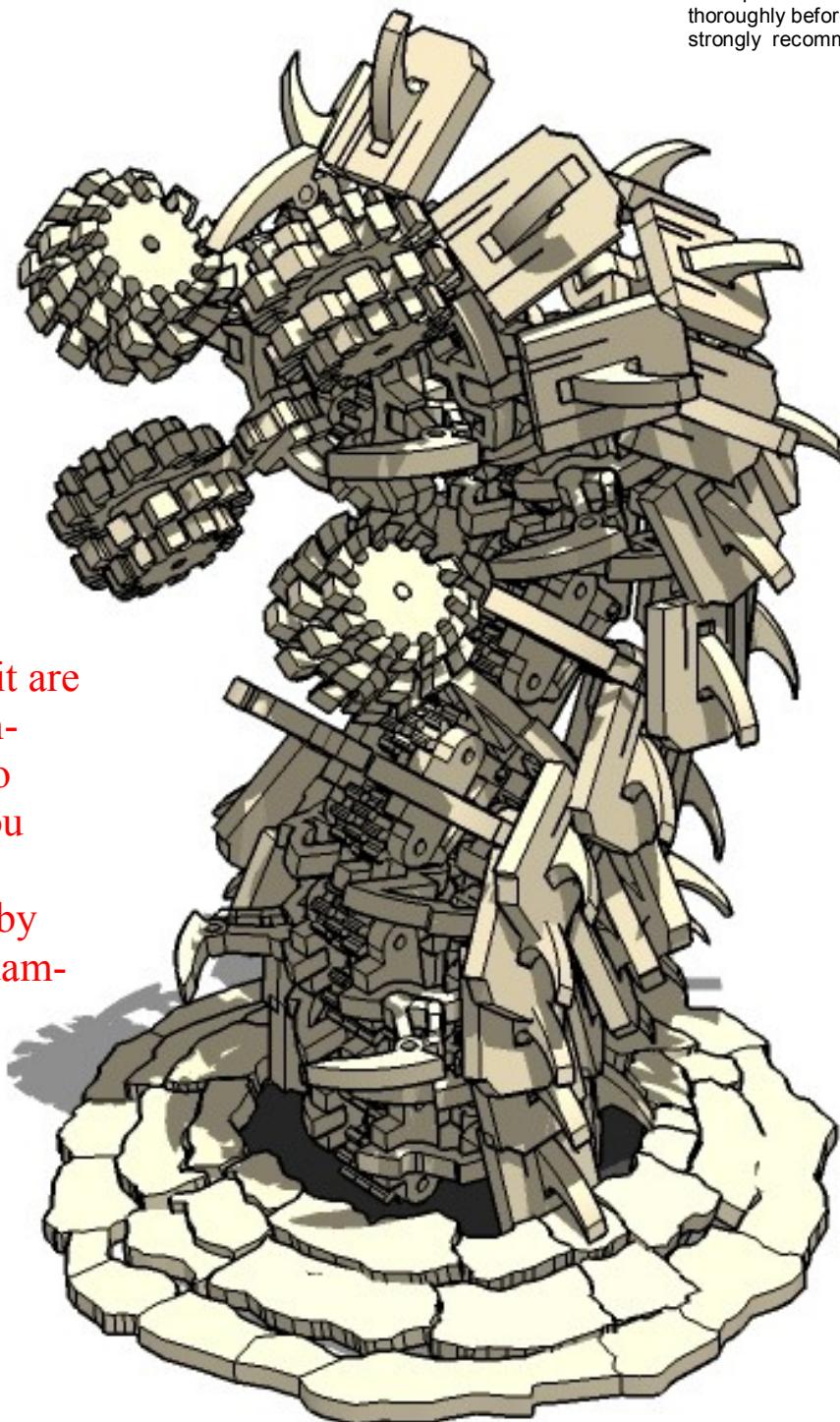
II. Use a file or sand paper last to completely remove the tabs that might remain.

III. Parts may be a very tight fit, slight trimming or sanding of parts may be needed for ease of assembly.

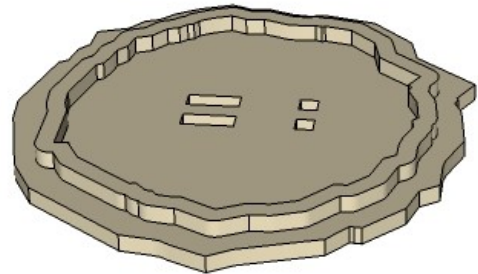
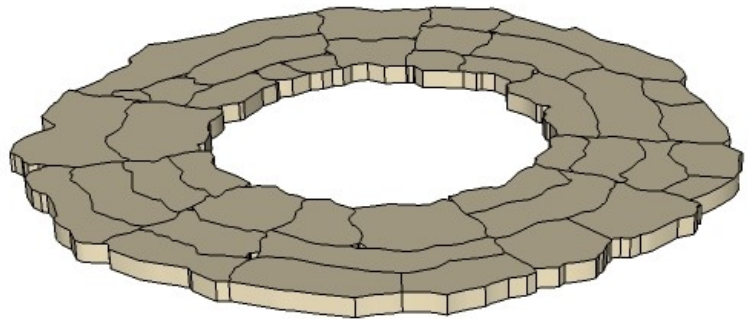
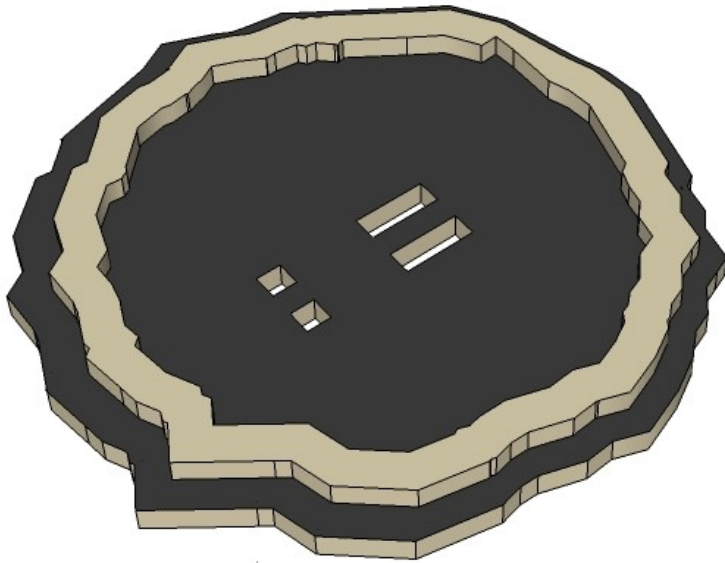
## Construction

Slot the parts together as shown by the pictures below, applying glue wherever there is a connection.

Allow the model to completely dry before painting it. This is a complex kit with many small parts. Allowing each section to dry thoroughly before heading to the next is strongly recommended.



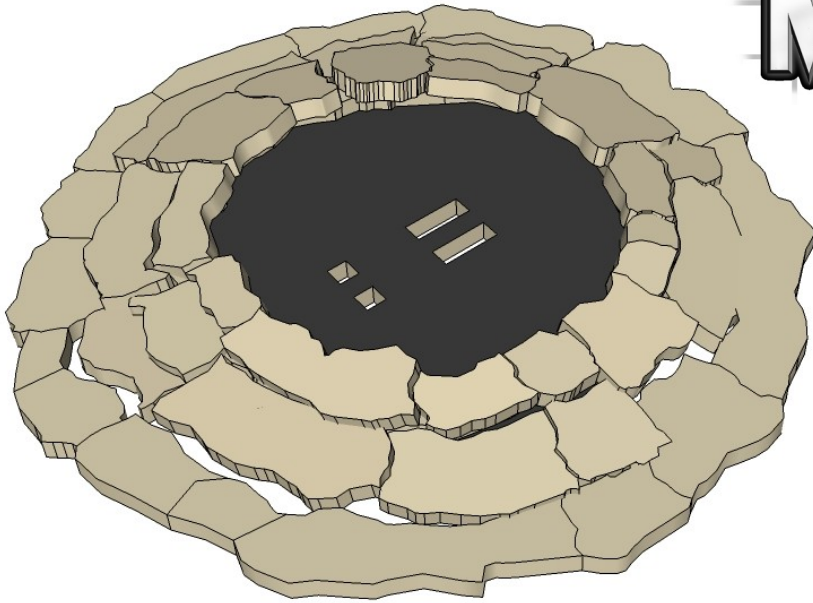
Some parts of this kit are very fine, or have engraving very close to edges. Make sure you cut through any tabs carefully with a hobby knife first to avoid damage.



This bit is kinda involved, and may be a little frustrating. Take your time, It should work out.

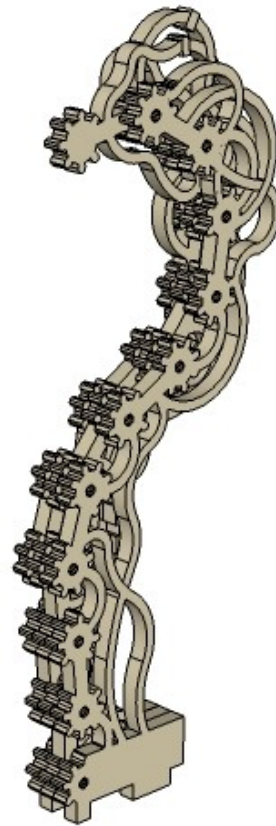
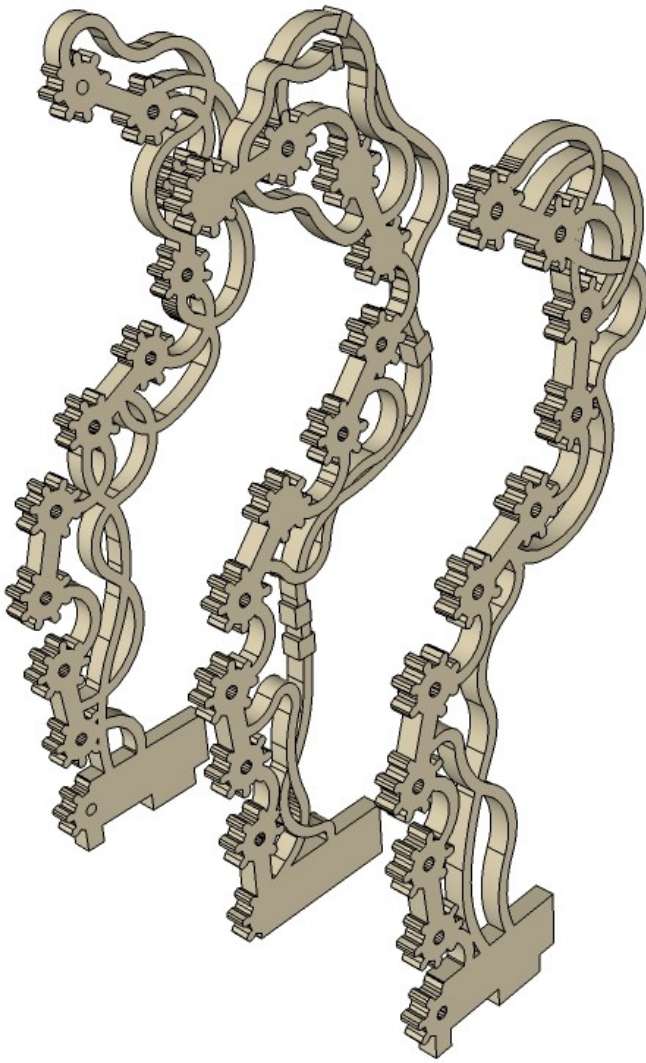
The crater surface is lightly joined into a single piece, so remove it from the board carefully. Apply glue to the top ring (a) and outer edge (b). (Its a good idea to put the whole thing on a disposable piece of paper)

Carefully place the crater surface over the top and gently but firmly smoosh (a technical term...) the whole thing down evenly so the centre parts of the surface bend upwards and the outer solid ring touches the ground.

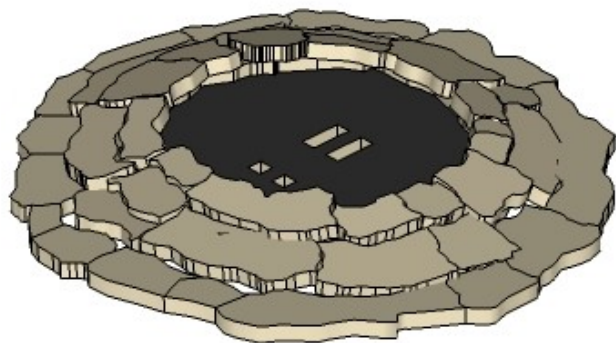


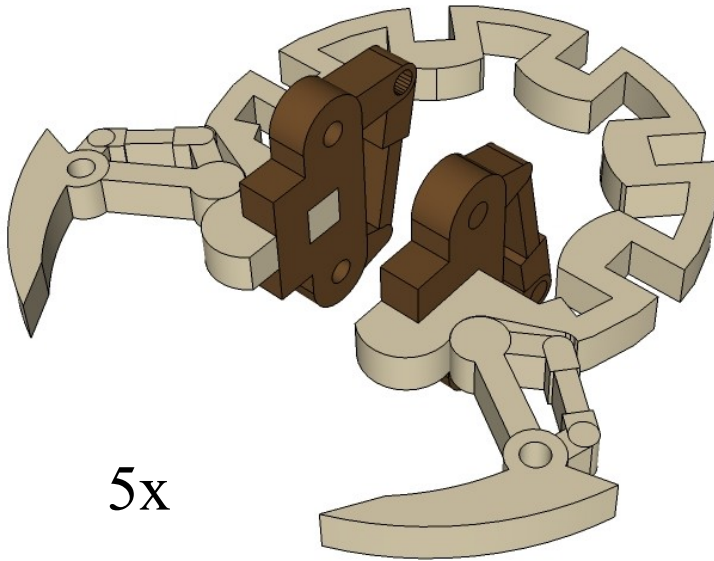
Gently push the surface into position while applying a bit of superglue between the joints and cracks. (Squeeze the glue into the cracks and let it flow between the parts) Do this a small section at a time, allow it to dry, then proceed around the circle until complete. I used cheap \$2 dollar shop superglue for this.





NOTE that throughout construction there are small holes in the centre of many of the round parts. You can use these to assist with alignment by inserting toothpicks or similar.



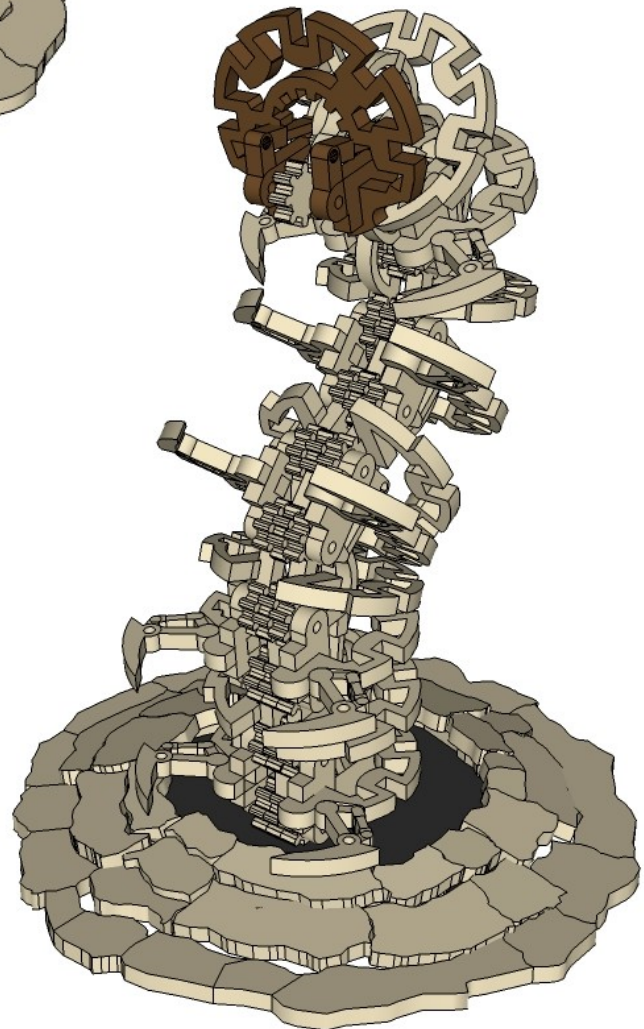
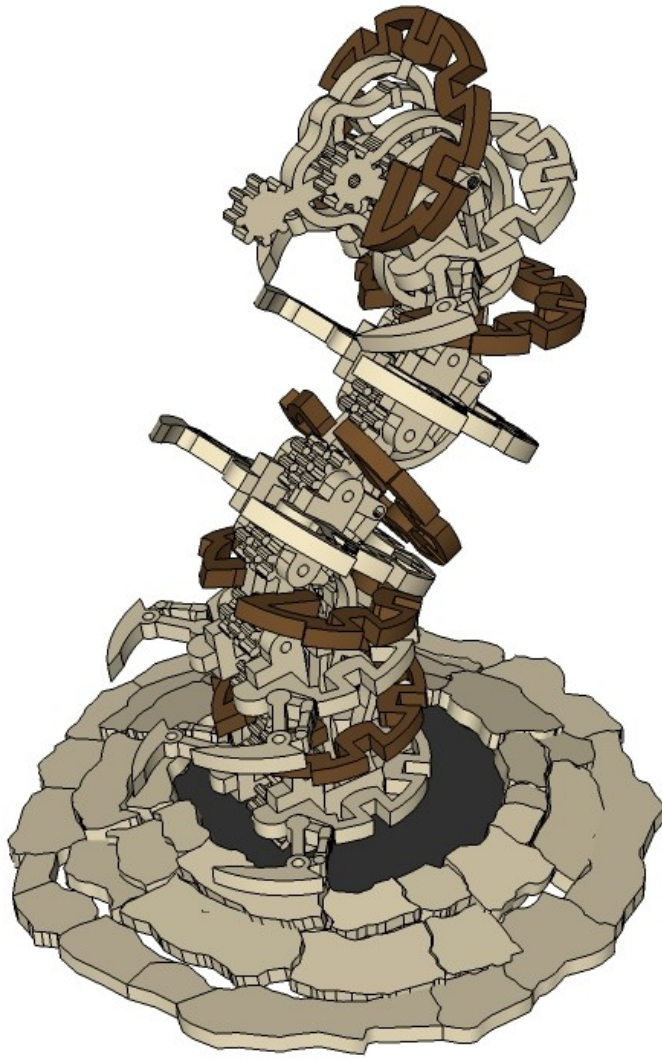


5x



CNC WORKSHOP

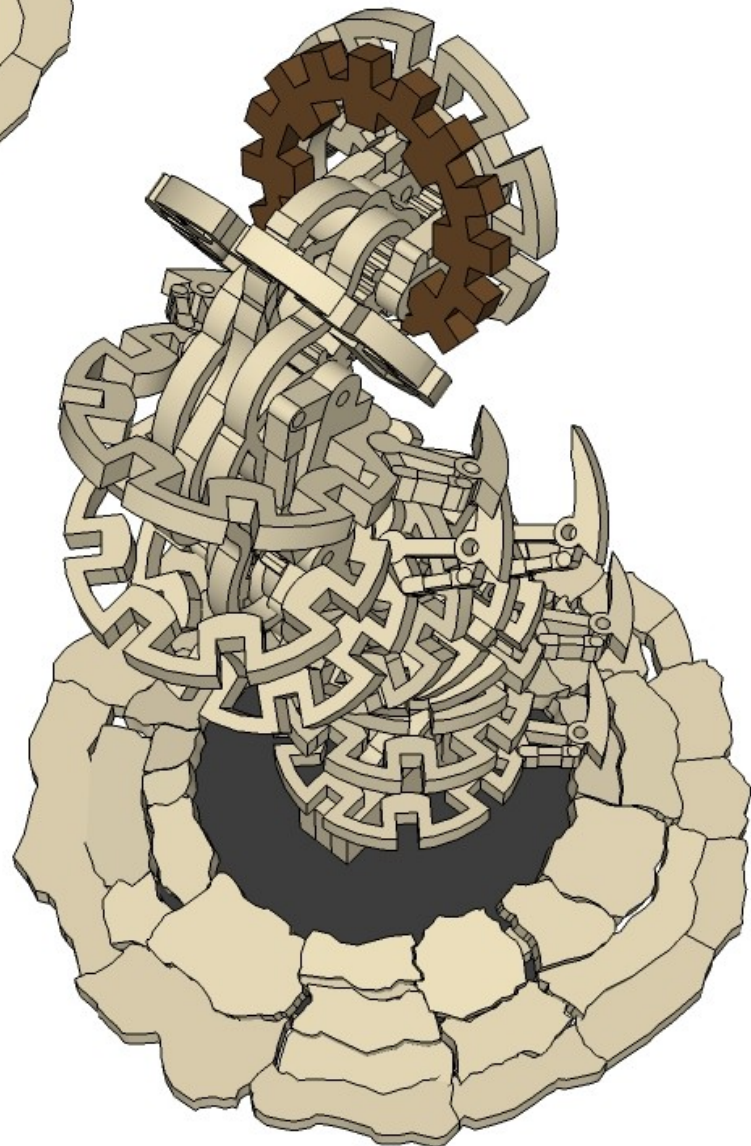
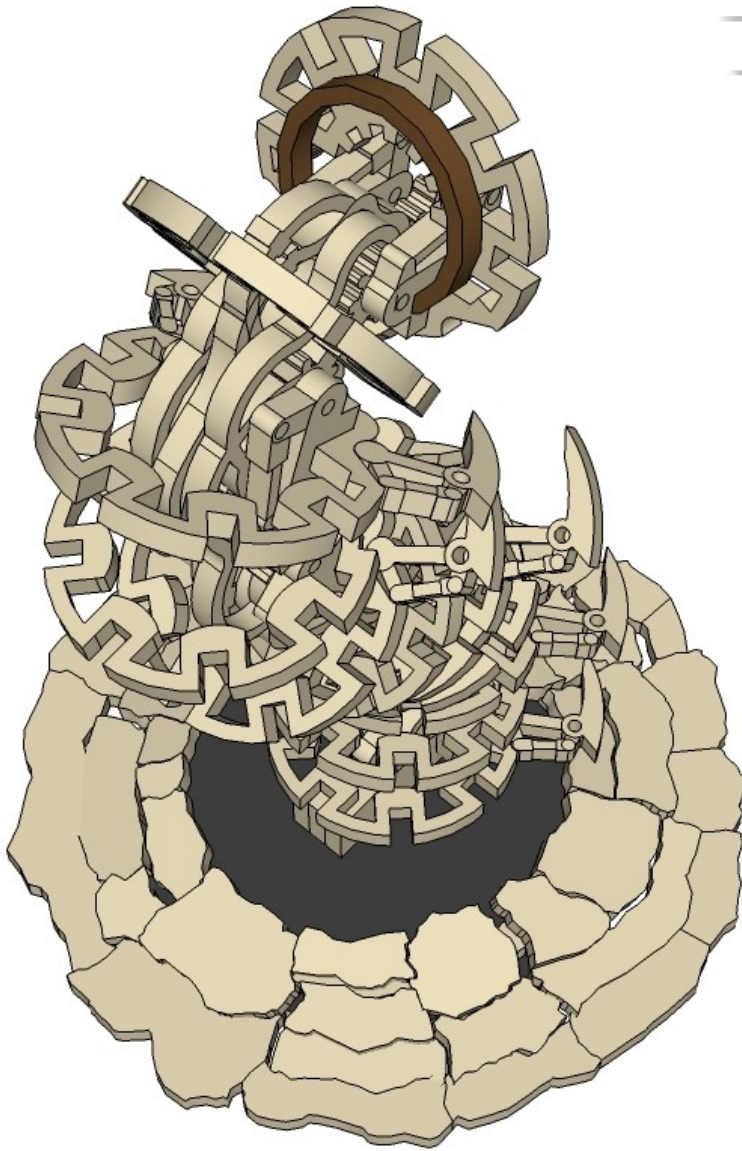
# MINIATURE SCENERY



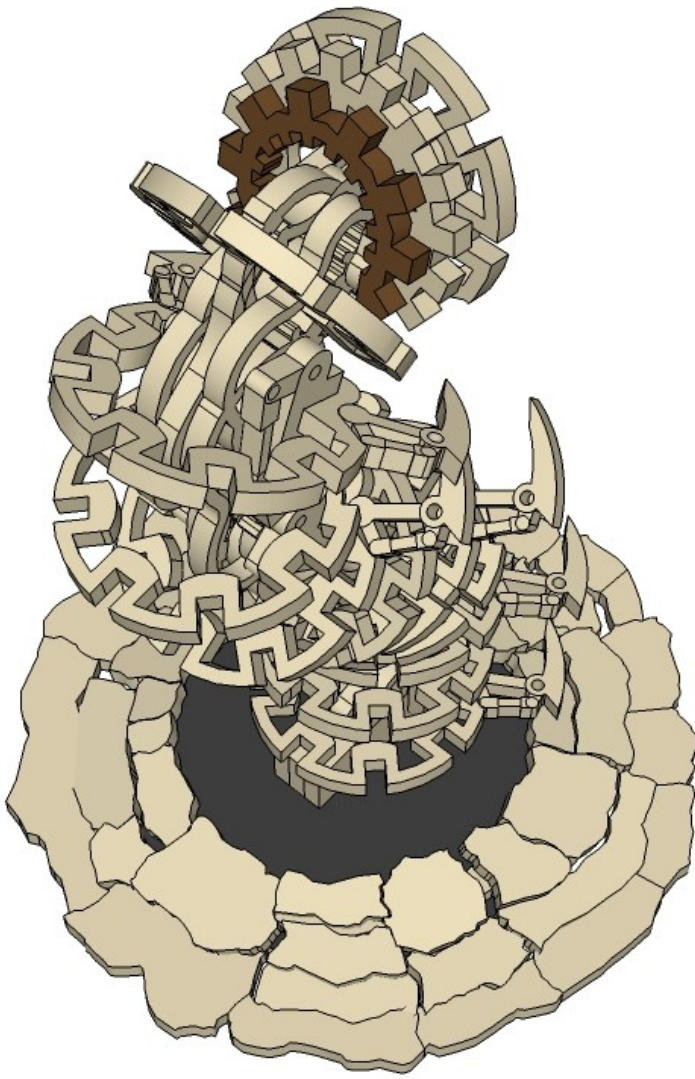


CNC WORKSHOP

# MINIATURE SCENERY

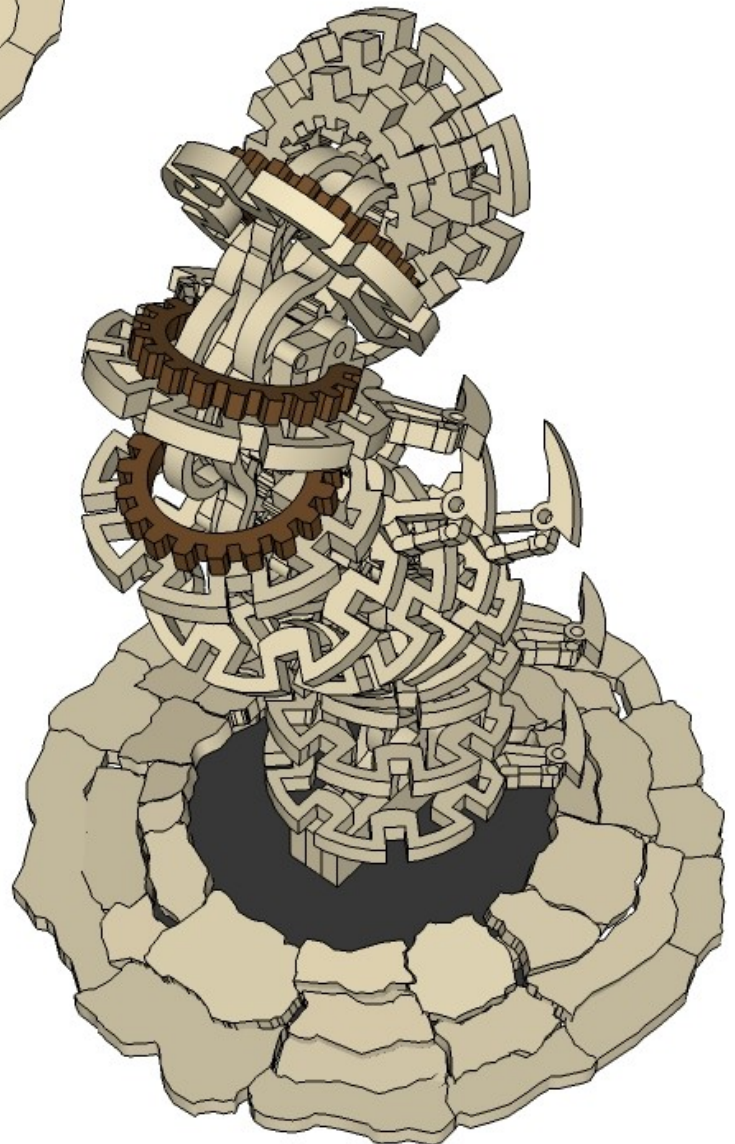






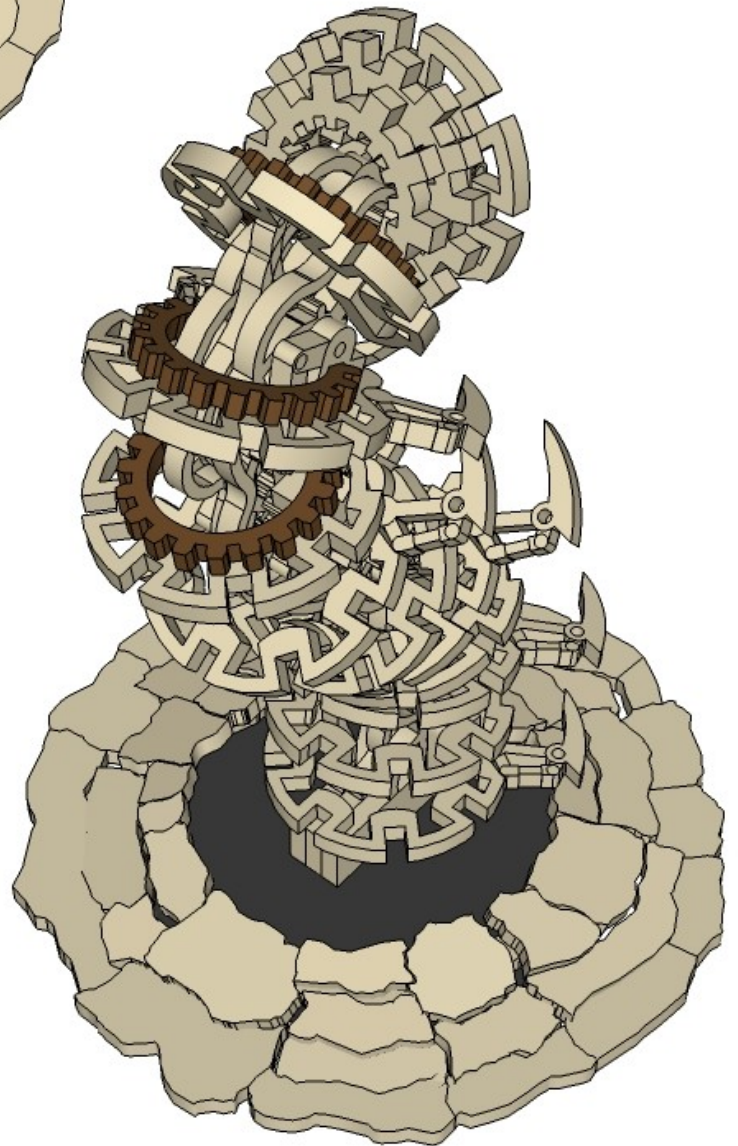
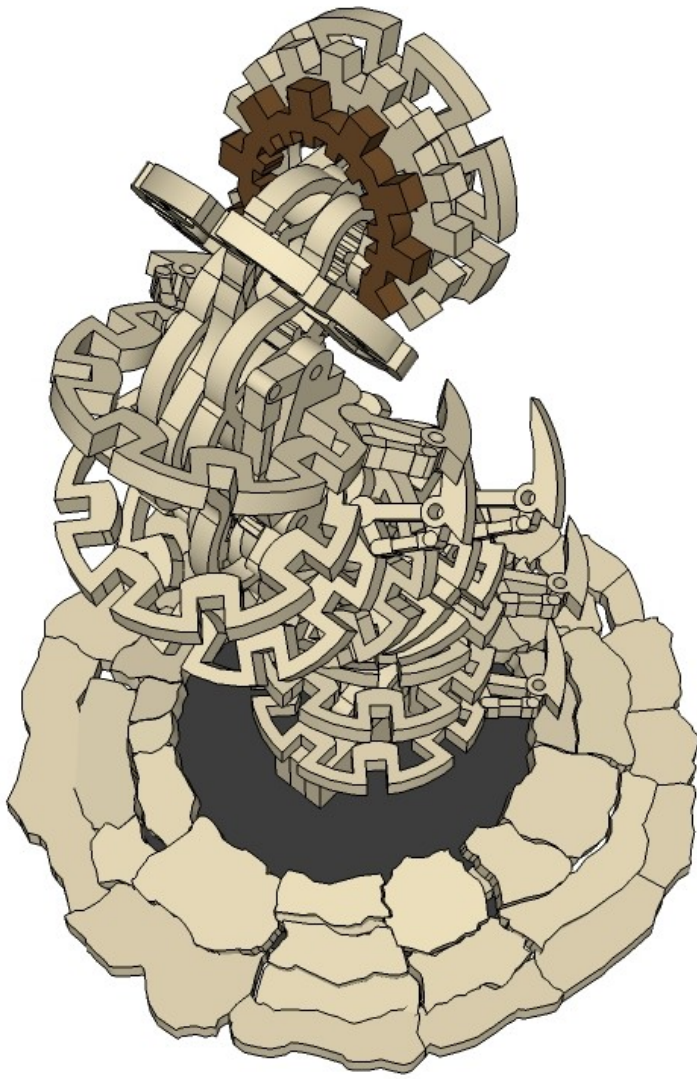
Now would be a good time to start painting your model if you have not already done so.

Painting the scales before attaching them is also highly recommended.

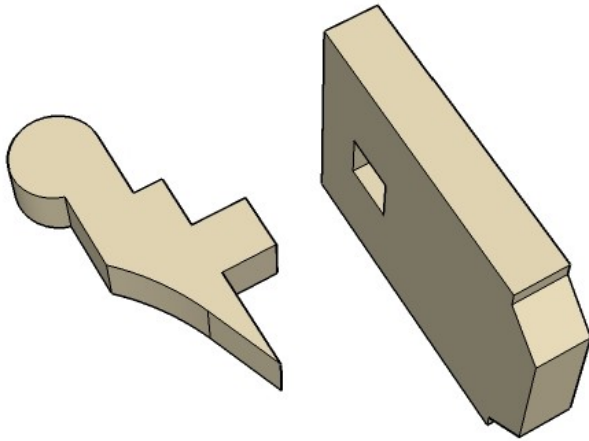


CNC WORKSHOP

# MINIATURE SCENERY



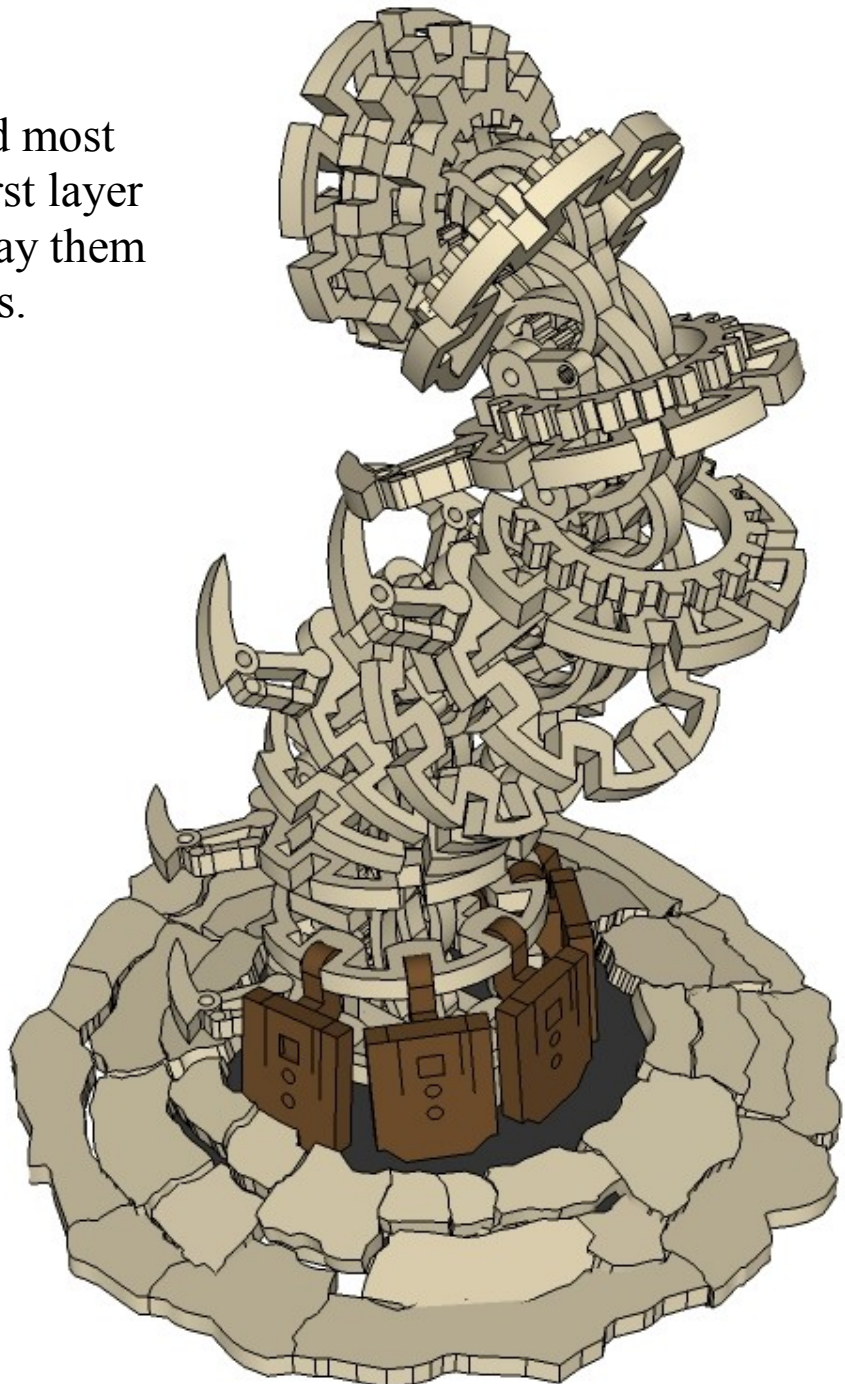




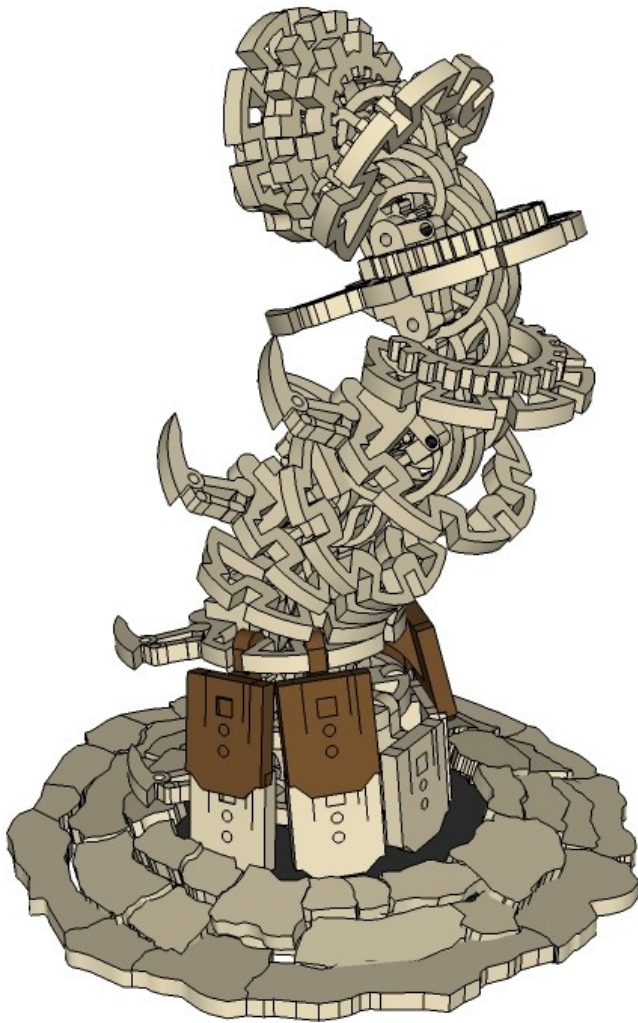
Scales.

This is the repetitive bit.  
You'll need about 40 of these.  
(I used 39)

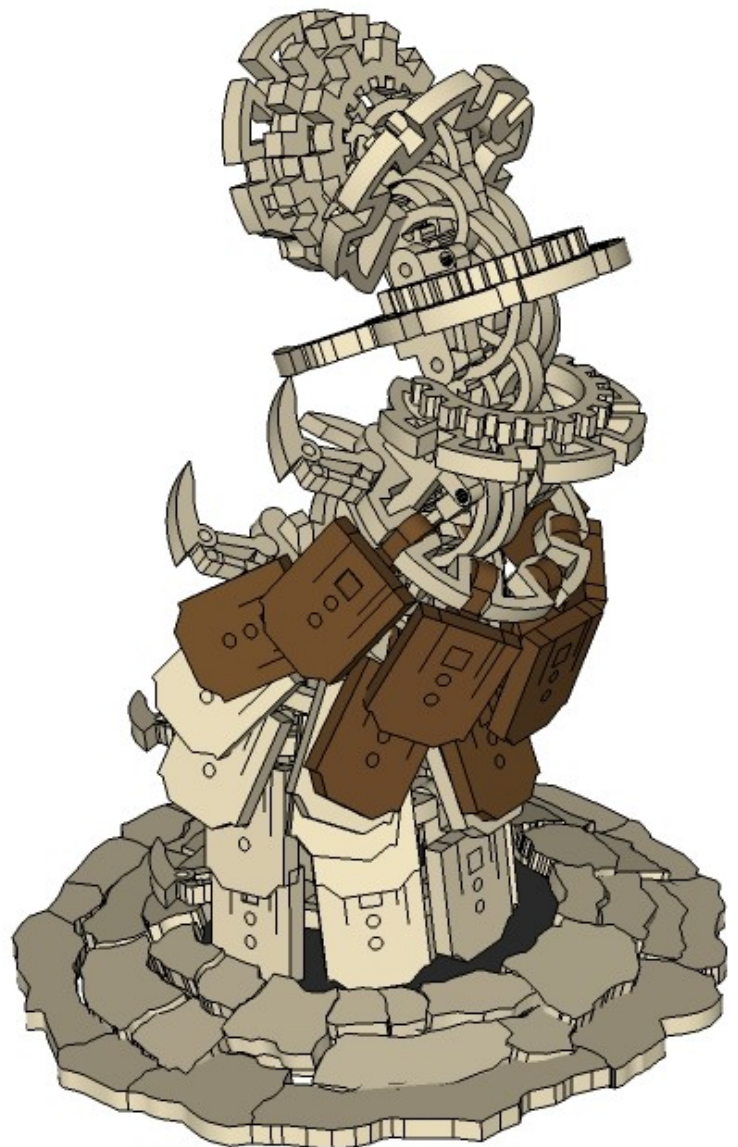
Starting at the second most  
bottom rib, glue the first layer  
in place as shown. Splay them  
slightly outwards.



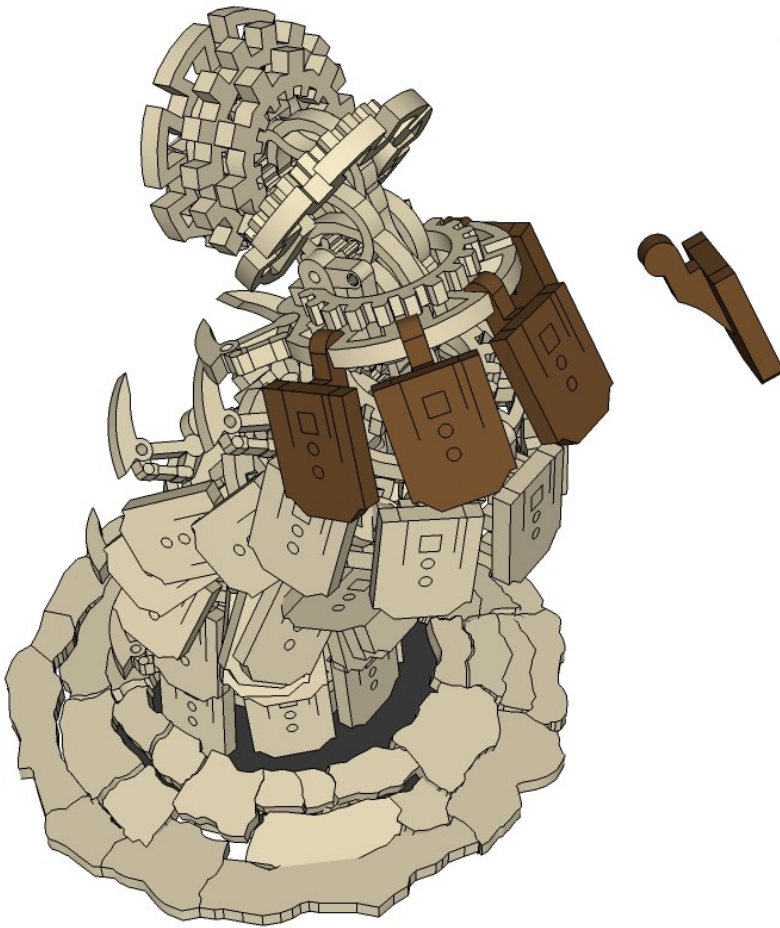
# MINIATURE SCENERY



The scales will get very crowded at the back.  
I left the centre scale of the second row to allow space.

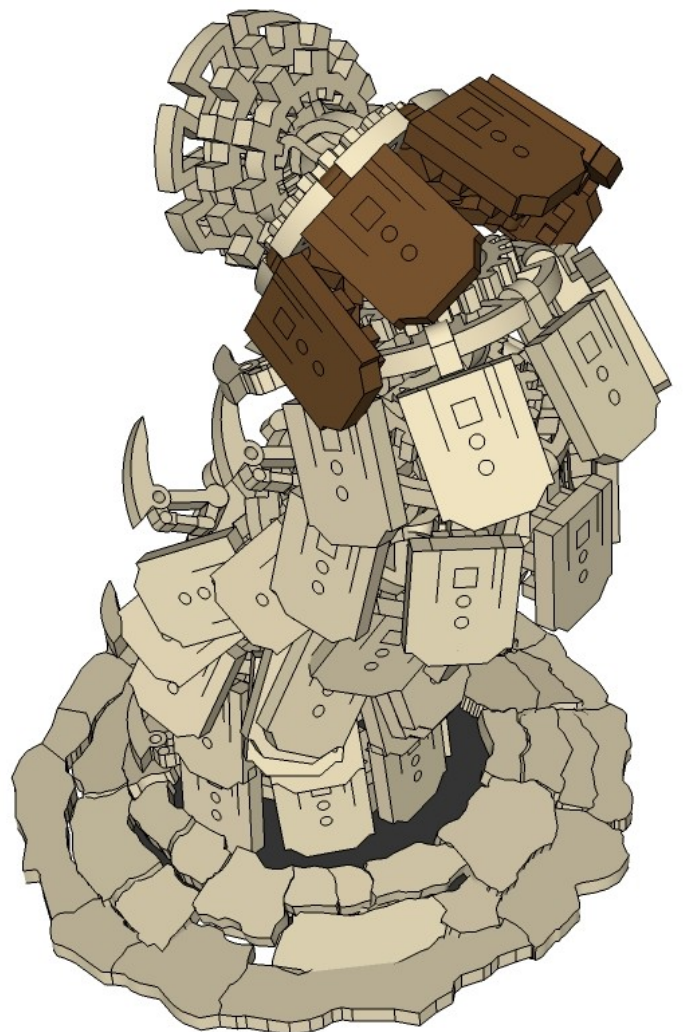
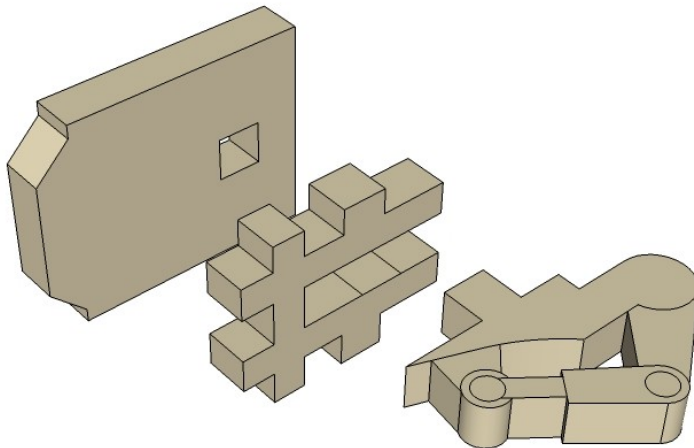






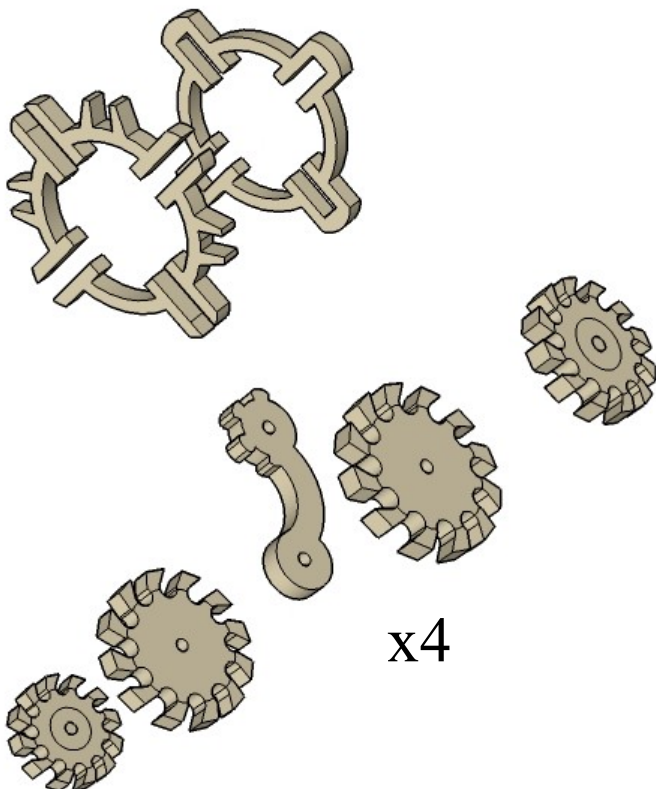
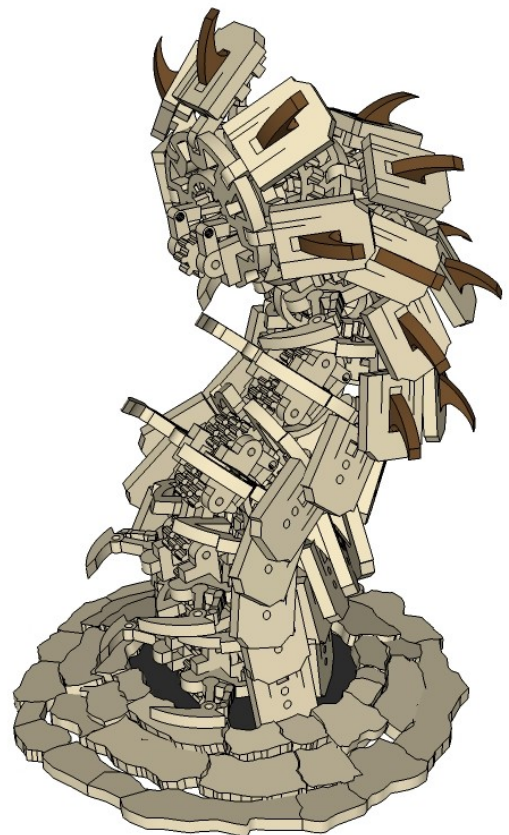
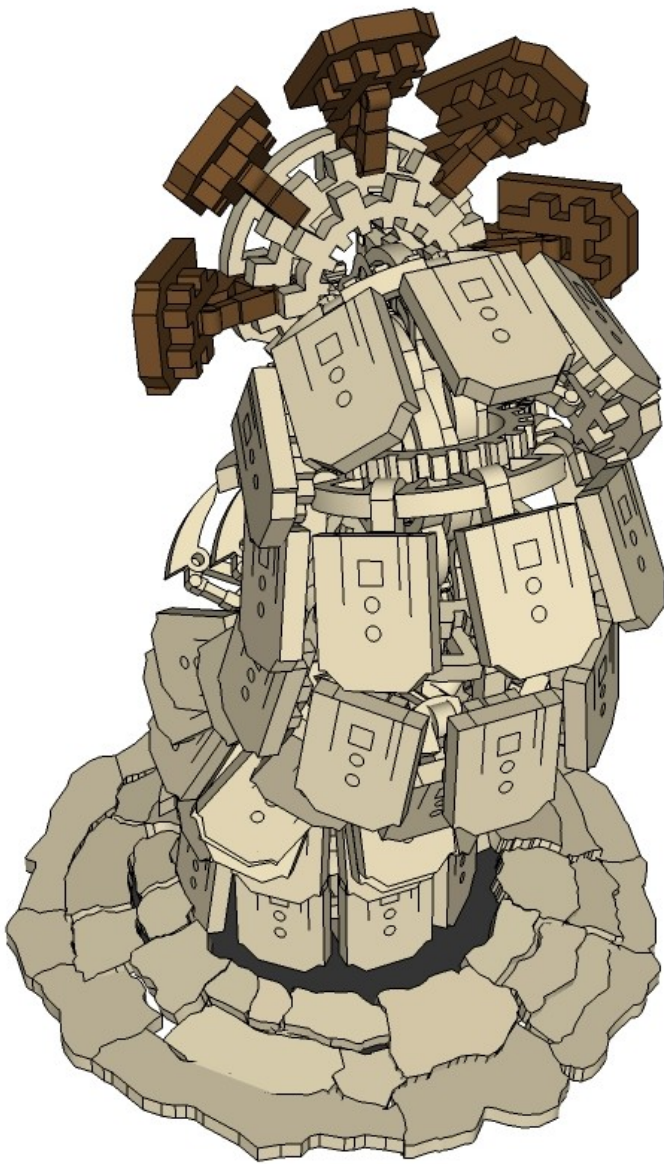
The final two rows are  
different.

Make ten of these.



# MINIATURE SCENERY

I've flared out the top row to give her a bit of a frill. You could glue the closed up if you like.

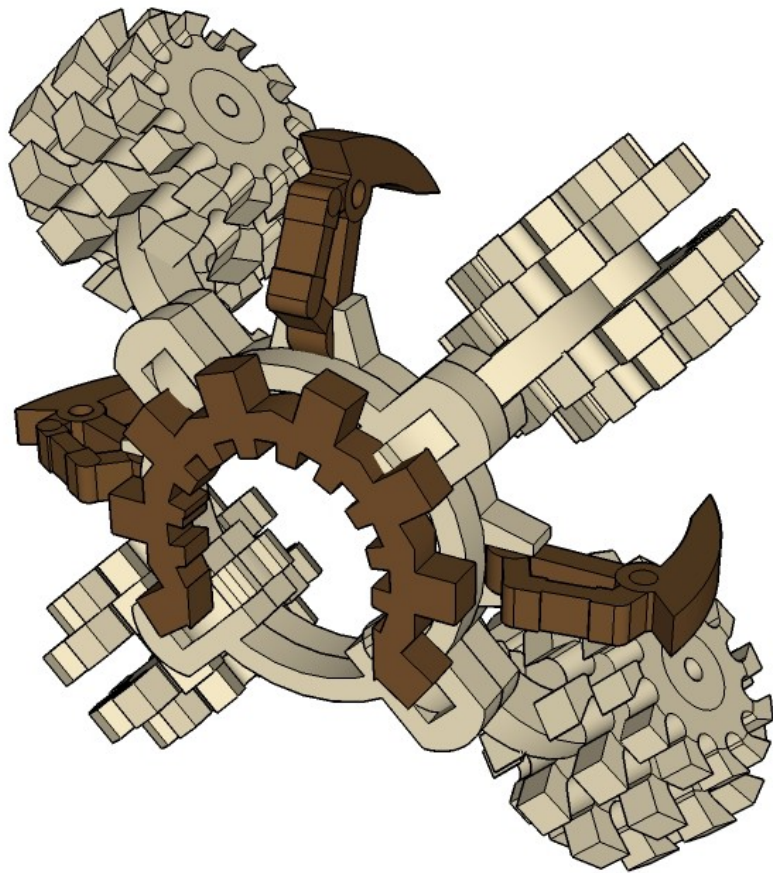


x4



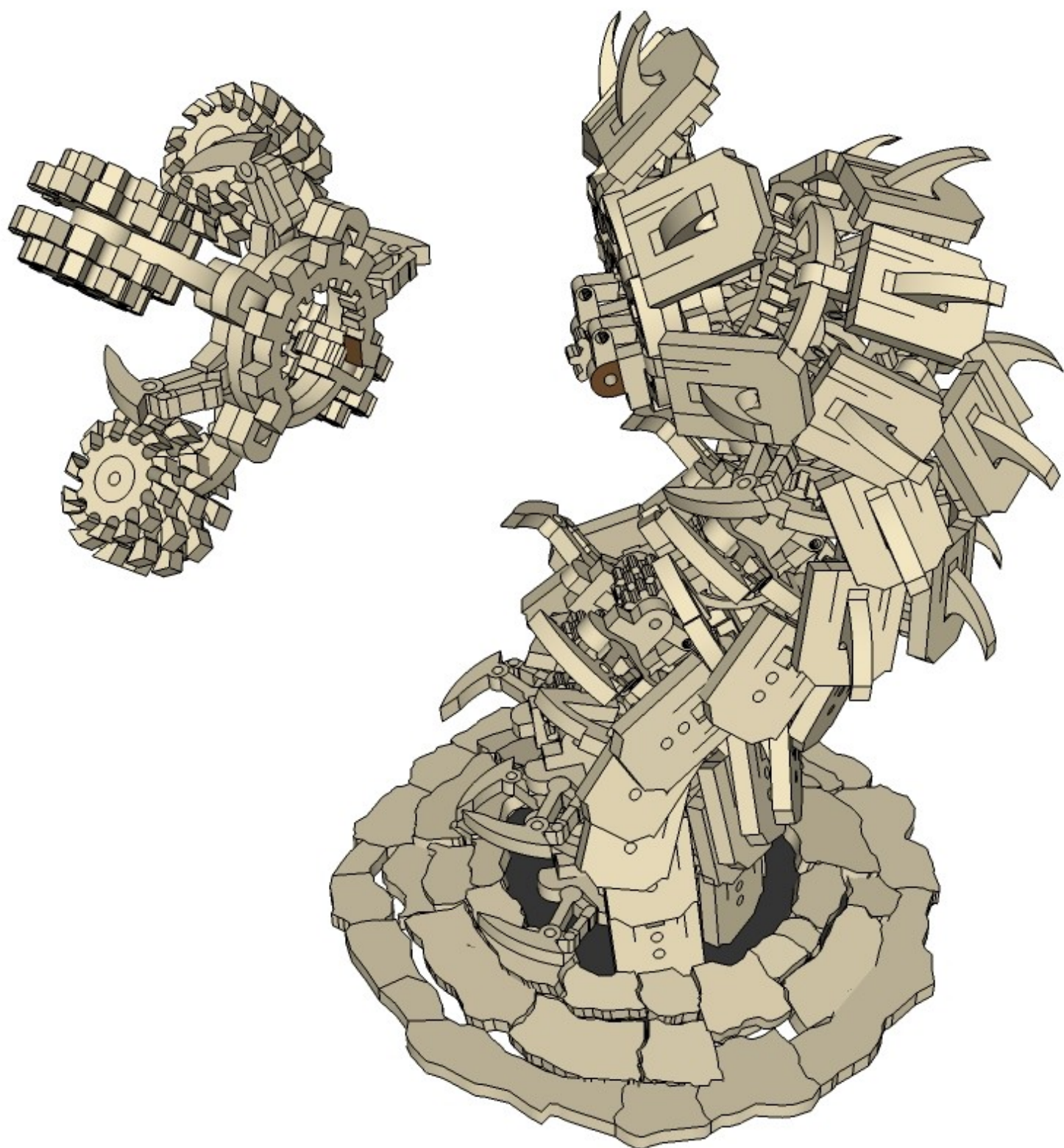


Glue the “teeth” in at your desired angle.



CNC WORKSHOP

# MINIATURE SCENERY





CNC WORKSHOP

# MINIATURE SCENERY





CNC WORKSHOP

# MINIATURE SCENERY





CNC WORKSHOP

# MINIATURE SCENERY

