

Preparation - What you need

- Some table space
- Small pair of **cutters**
- **PVA glue** (wood glue, hobby glue)
- A **file** or small piece of **sandpaper** (used to remove any tab stubs that *may* remain after being clipped by the cutters).

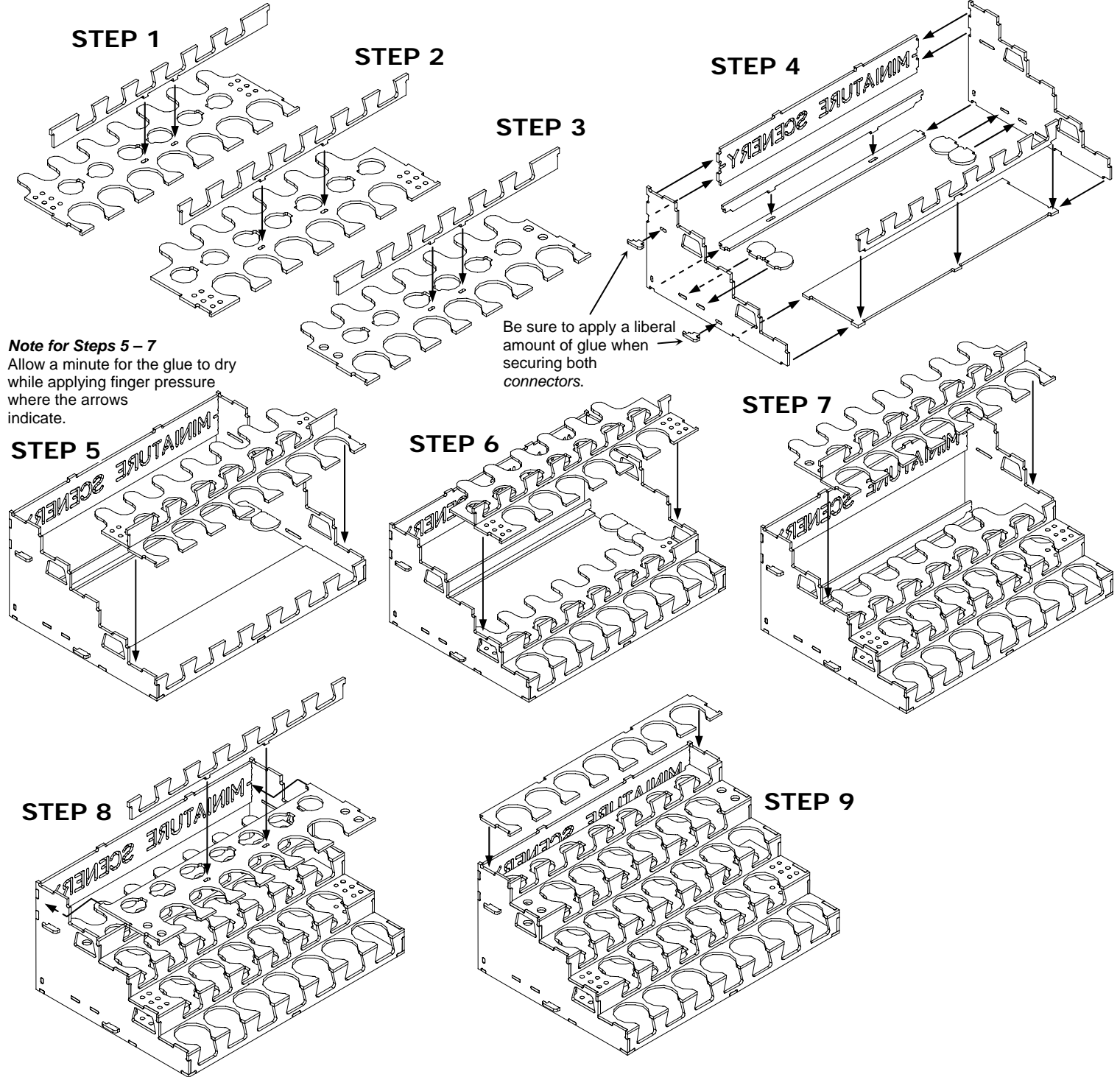
Gluing

Apply a small amount of glue wherever there is a connection.

Watch out for any grit or clumps in the glue that may cause unevenness.

Construction

- Use cutters to separate the parts from the panel.
- Go over each part again with the cutters to completely remove the tabs (you should only need the file or sandpaper for minor cleaning touch-ups).
- Use a file or sand paper last to clean any remaining tab fragments.



Tool rack expansion

The Paint rack can be easily expanded by joining it to a Tool rack or another Paint rack. Many configurations can be achieved to customise a rack layout to fit your workspace. For more information on the Tool rack visit www.miniaturescenery.com