

MINIATURE SCENERY

CHASTISER BATTLE CHURCH CONVERSION KIT



This is a conversion kit to add features to a plastic APC tank.

PLASTIC TANK NOT INCLUDED



Build Options



FOR DETAILED, EASY TO FOLLOW INSTRUCTIONS VISIT
WWW.MINIATURESCENERY.COM

Contents may contain small parts. Not suitable for children under 6 years old. The exclusive copyright on the model designs and components within this case is the property of Miniature Scenery, 2016. All rights reserved.

DISCLAIMER:

This Model Kit is completely unofficial and in no way endorsed by Games Workshop Limited.

Adeptus Astartes, Battlefleet Gothic, Black Flame, Black Library, the Black Library logo, BL Publishing, Blood Angels, Bloodquest, Blood Bowl, the Blood Bowl logo, The Blood Bowl Spike Device, Cadian, Catachan, the Chaos device, Cityfight, the Chaos logo, Citadel, Citadel Device, City of the Damned, Codex, Daemonhunters, Dark Angels, Dark Eldar, Dark Future, the Double-Headed/Imperial Eagle device, 'Eavy Metal, Eldar, Eldar symbol devices, Epic, Eye of Terror, Fanatic, the Fanatic logo, the Fanatic II logo, Fire Warrior, Forge World, Games Workshop, Games Workshop logo, Genestealer, Golden Demon, Gorkamorka, Great Unclean One, the Hammer of Sigmar logo, Horned Rat logo, Inferno, Inquisitor, the Inquisitor logo, the Inquisitor device, Inquisitor:Conspiracies, Keeper of Secrets, Khemri, Khorne, Kroot, Lord of Change, Marauder, Mordheim, the Mordheim logo, Necromunda, Necromunda stencil logo, Necromunda Plate logo, Necron, Nurgle, Ork, Ork skull devices, Sisters of Battle, Skaven, the Skaven symbol devices, Slaanesh, Space Hulk, Space Marine, Space Marine chapters, Space Marine chapter logos, Talisman, Tau, the Tau caste designations, Tomb Kings, Trio of Warriors, Twin Tailed Comet Logo, Tyranid, Tyrannid, Tzeentch, Ultramarines, Warhammer, Warhammer Historical, Warhammer Online, Warhammer 40k Device, Warhammer World logo, Warmaster, White Dwarf, the White Dwarf logo, and all associated marks, names, races, race insignia, characters, vehicles, locations, units, illustrations and images from the Blood Bowl game, the Warhammer world, the Talisman world, and the Warhammer 40,000 universe are either ®, TM and/or © Copyright Games Workshop Ltd 2000-2010, variably registered in the UK and other countries around the world. Used without permission. No challenge to their status intended. All Rights Reserved to their respective owners.

MINIATURE SCENERY

INSTRUCTIONS

CHASTISER MOBILE BATTLE CHURCH CONVERSION KIT.

PREPARATION

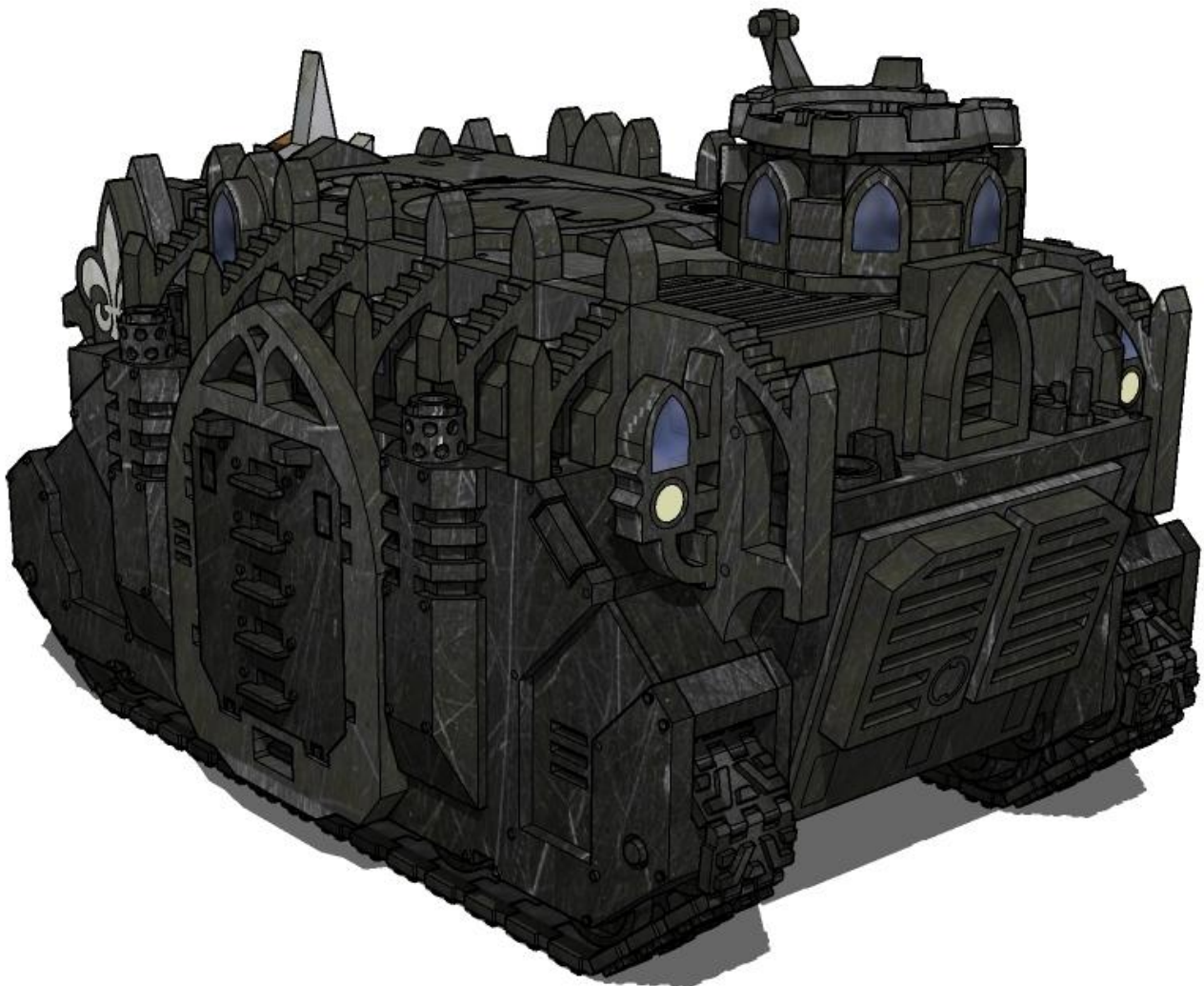
You will need:

- Cutting mat or something to protect your table.
- PVA/Wood glue or superglue if you prefer.
- Small file or sand paper.
- Small blade / hobby knife



GENERAL PROCESS

- Clear plenty of table space, you will need it.
- Parts should remove easily from the board by pressing through and popping them out. It's a good idea to cut through the tiny joins first though, and some parts (particularly smaller, more detailed parts) may need more careful persuasion.
- Use file or sand paper to remove the small bur caused by the connection to the frame.
- It's a good idea to familiarise yourself with how the pieces fit together before gluing.
- Slot the parts together as shown by the pictures below, applying glue wherever there is a connection. (unless shown otherwise)
- Parts may be a very tight fit, slight trimming or sanding of parts may be needed for ease of assembly.



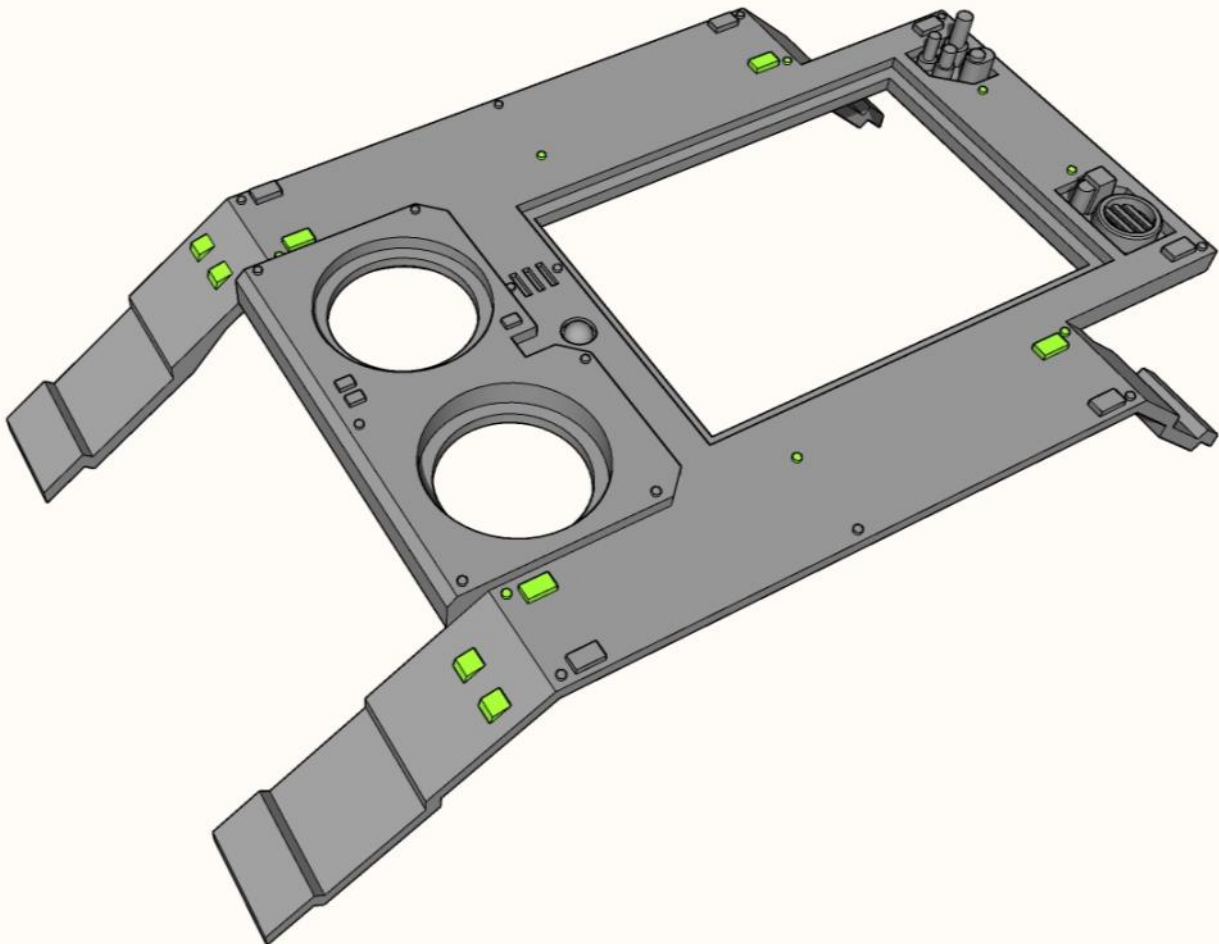
THIS CONVERSION KIT IS DESIGNED TO BE FITTED TO THE GAMES WORKSHOP PLASTIC RHINO KIT. SOME VERY SLIGHT MODIFICATION WILL BE NEEDED SO THE NEW PARTS WILL FIT PROPERLY.

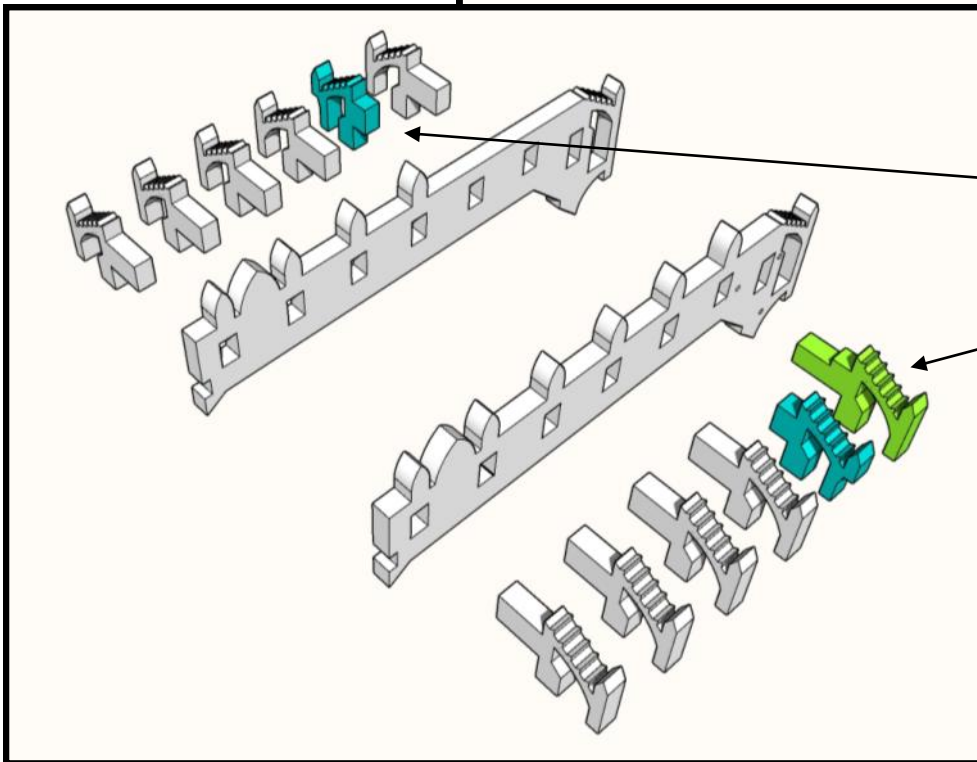
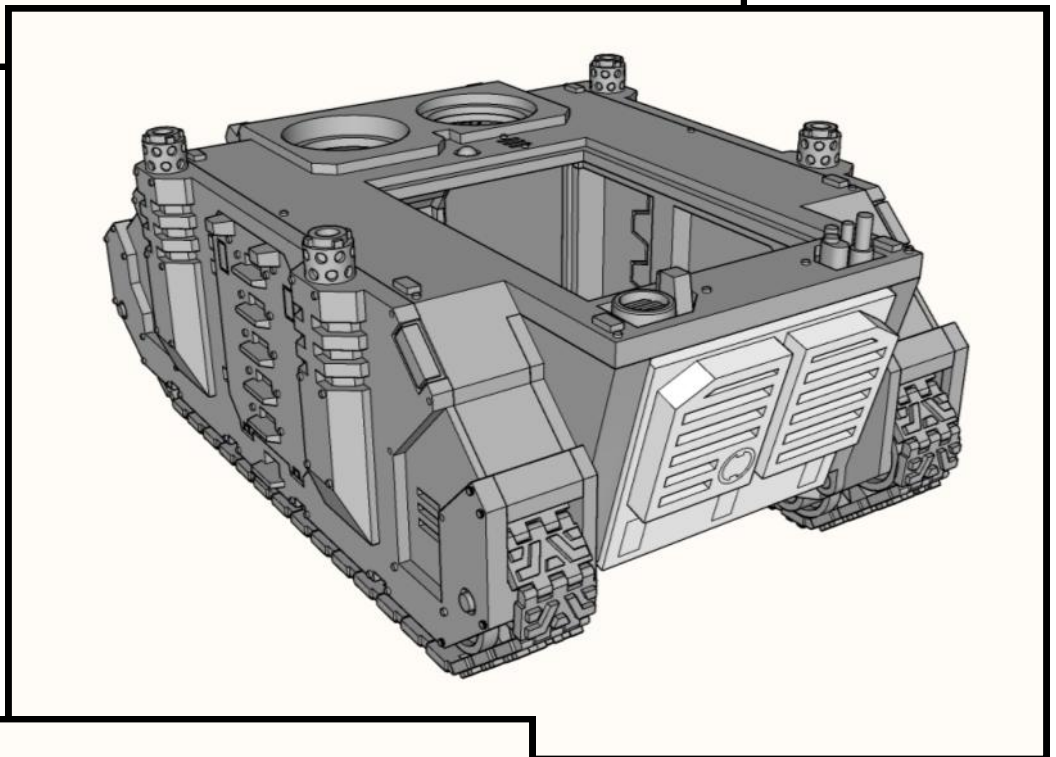
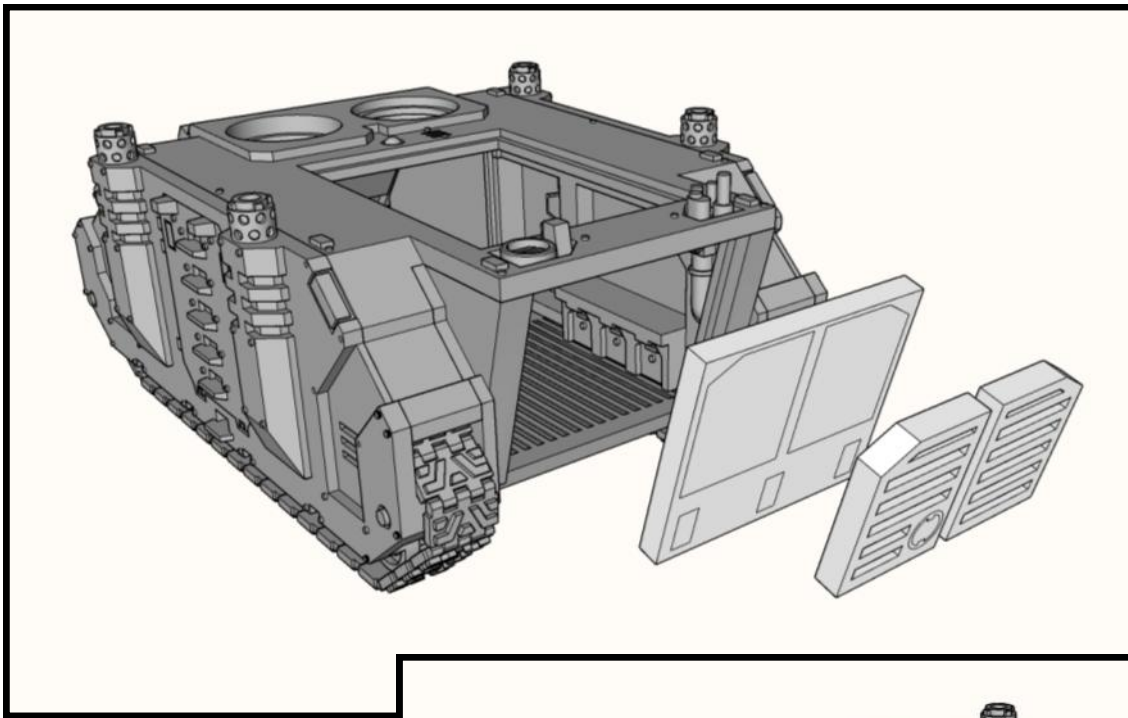
REMOVE THE PARTS INDICATED BY THE BRIGHT GREEN IN THE ILLUSTRATION.

FOR ATTACHING THE MDF PARTS TO THE PLASTIC, WE RECOMMEND CA ADHESIVE (SUPERGLUE)

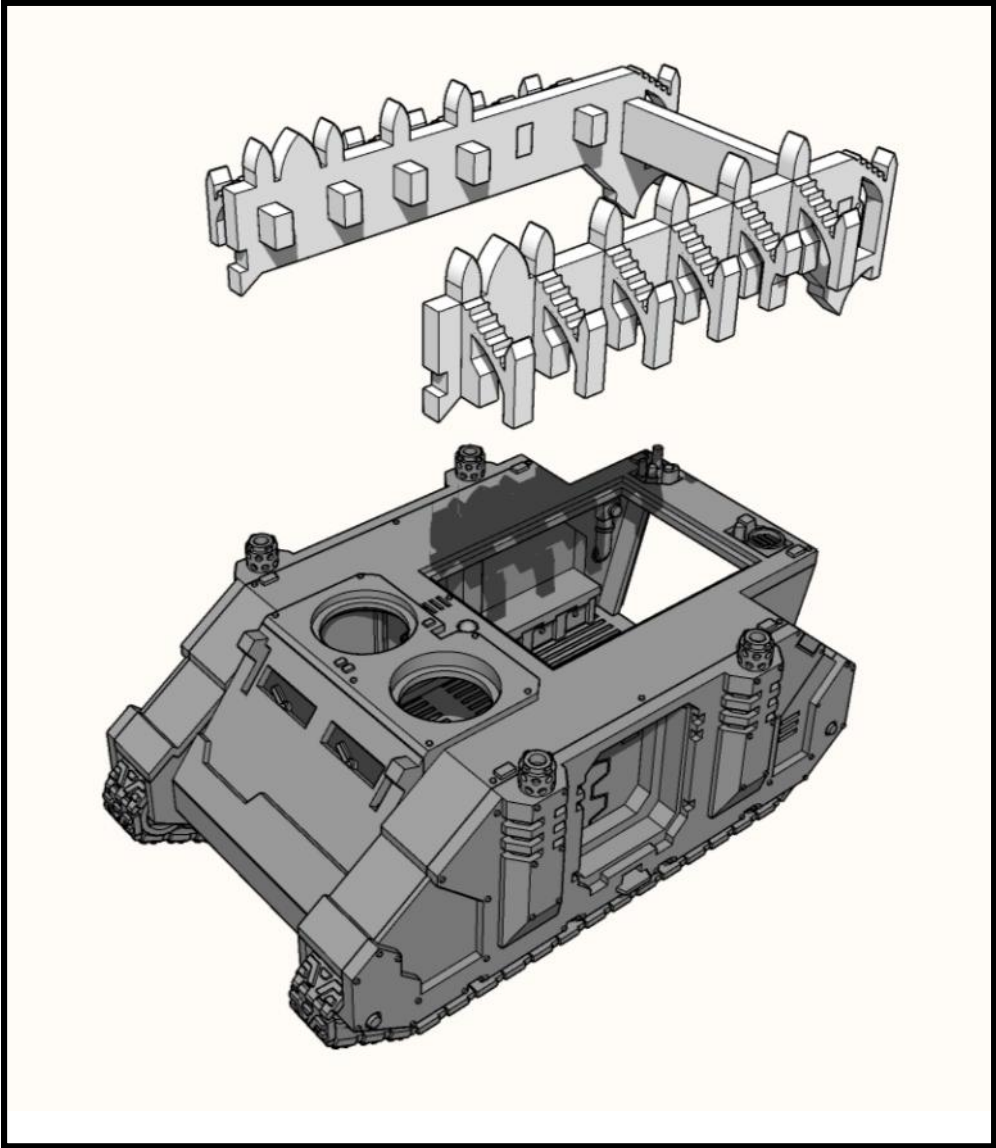
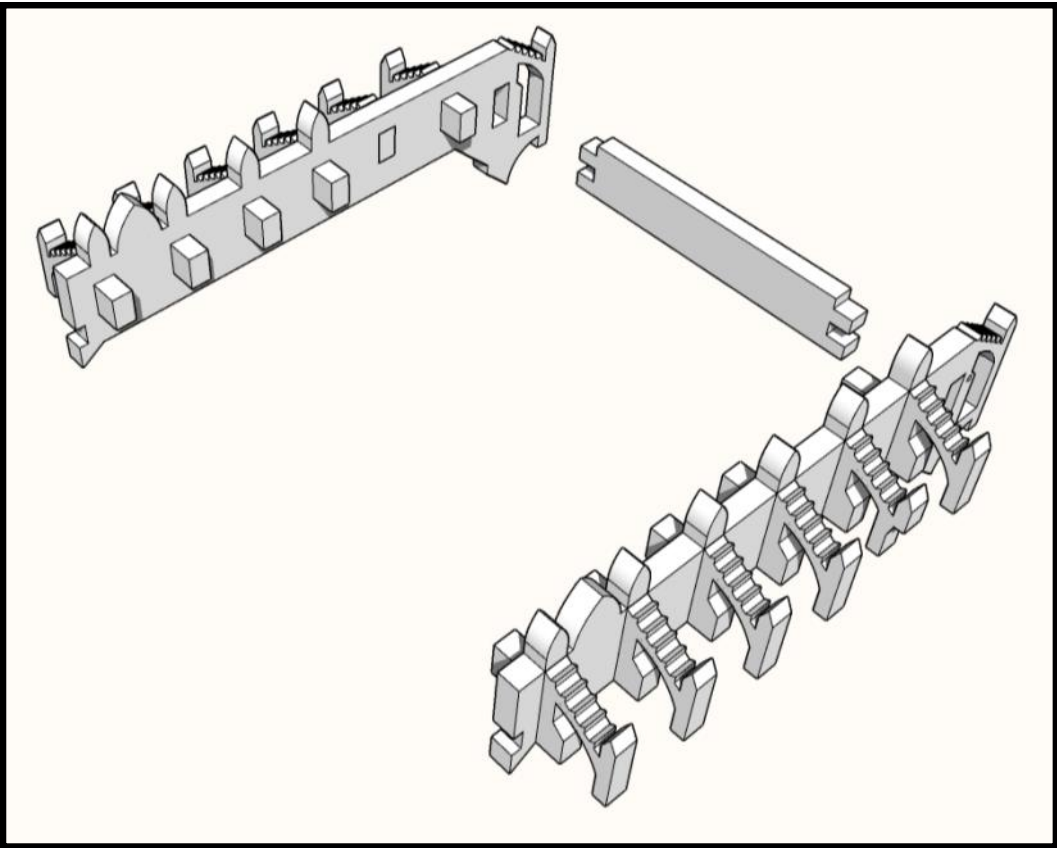
ASSEMBLE YOUR RHINO AS NORMAL, LEAVING OFF THE REAR RAMP AND ANY ACCESSORIES.

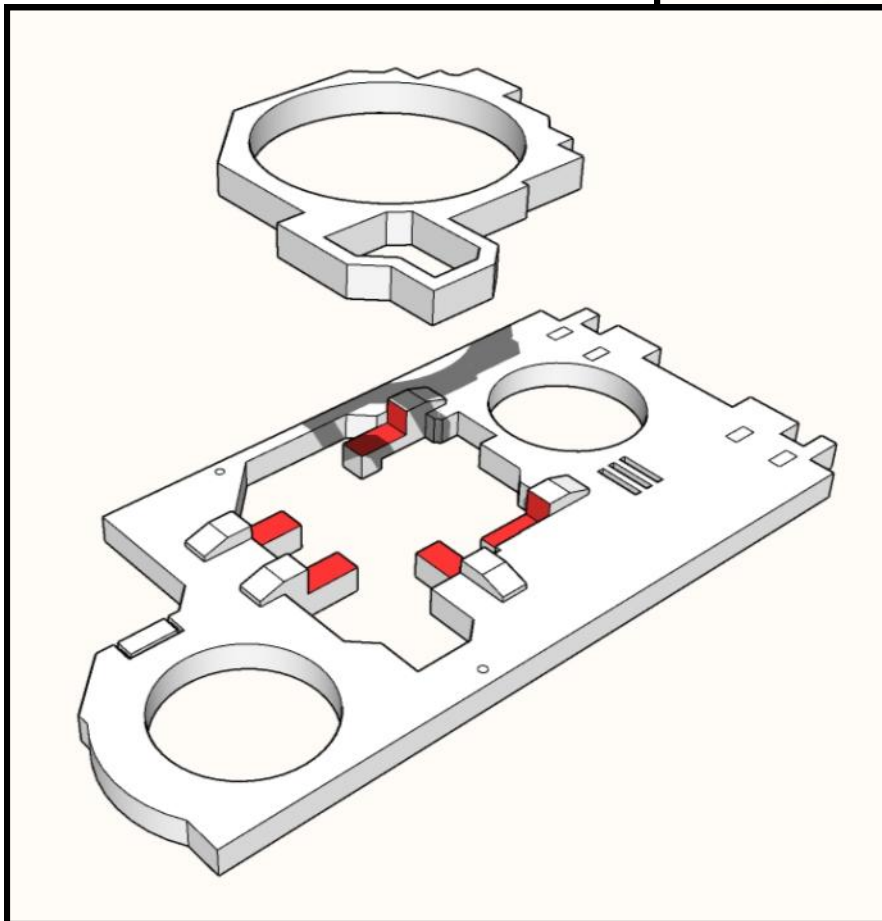
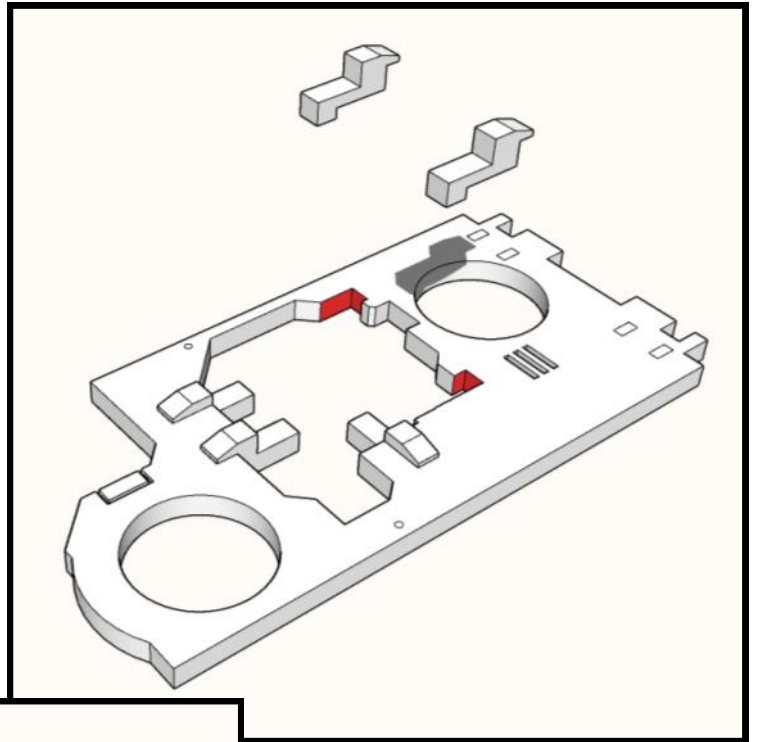
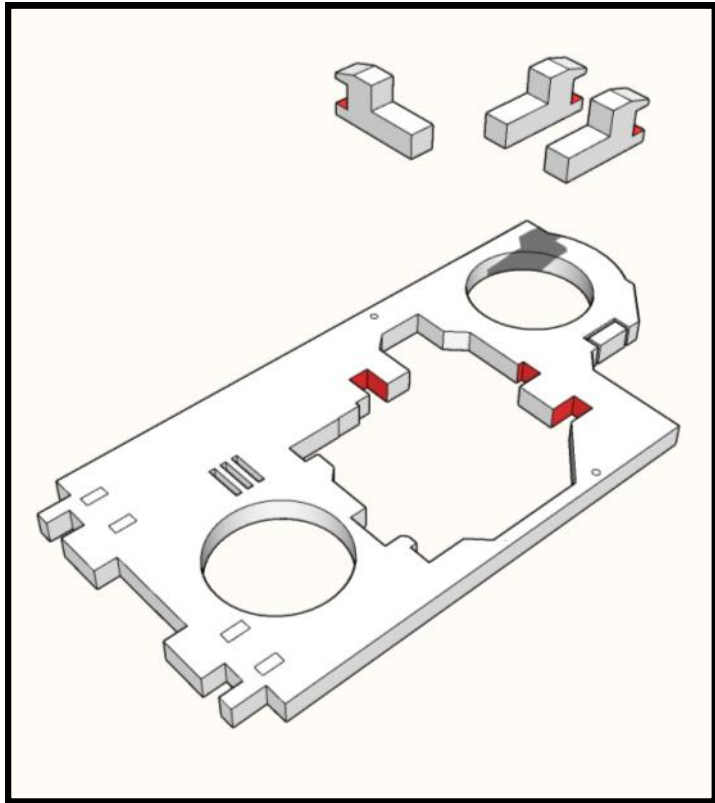
THE FRONT GLACIS PLATE CAN BE FITTED, BUT IS NOT REQUIRED FOR THE BUILD.
LEAVE THE HEADLIGHTS OFF UNTIL INSTRUCTED.

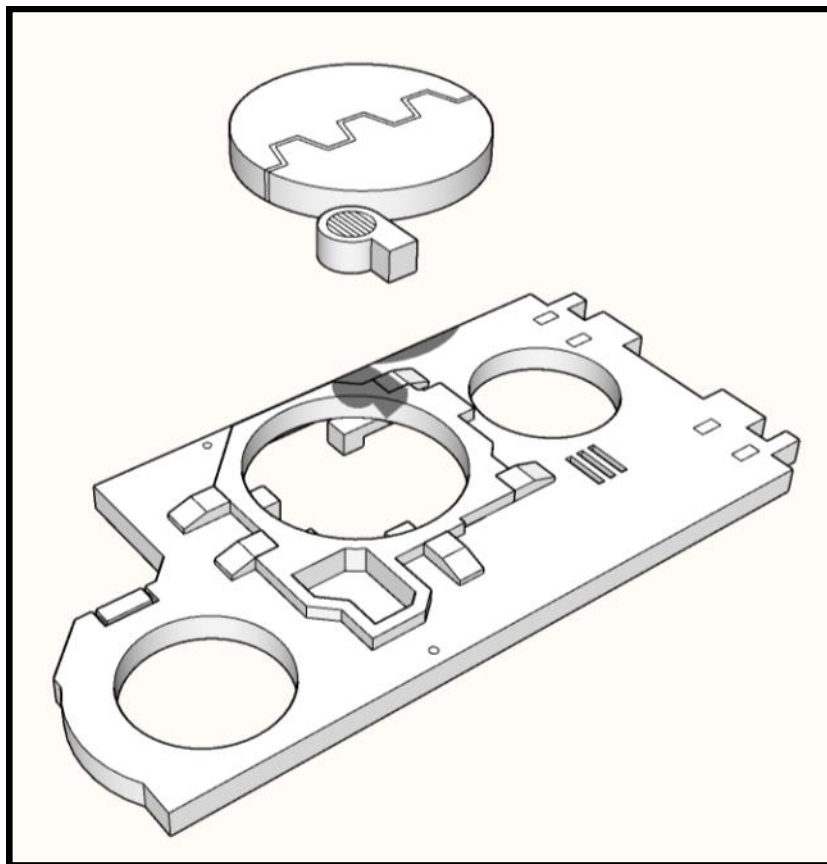
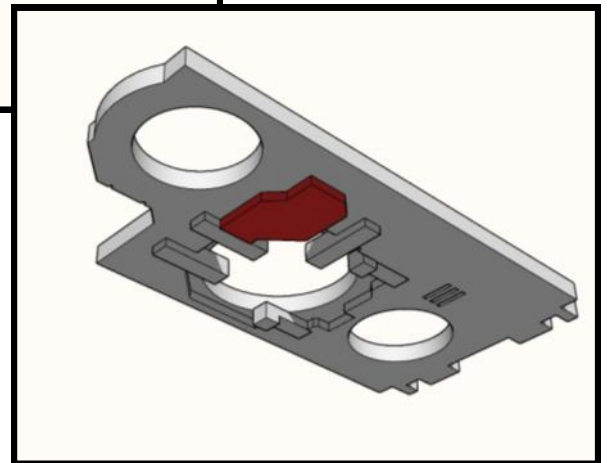
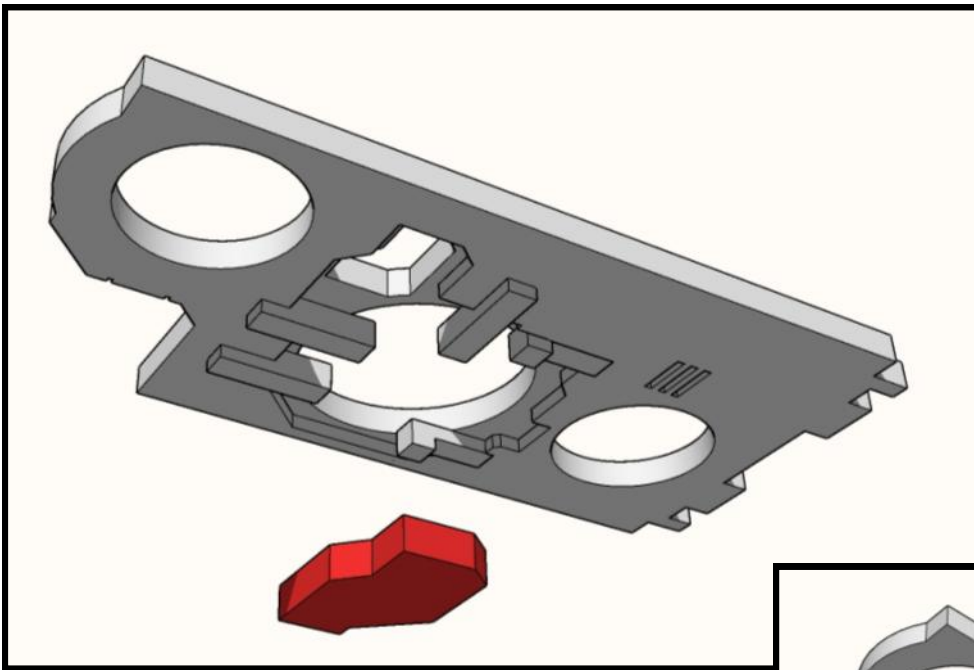


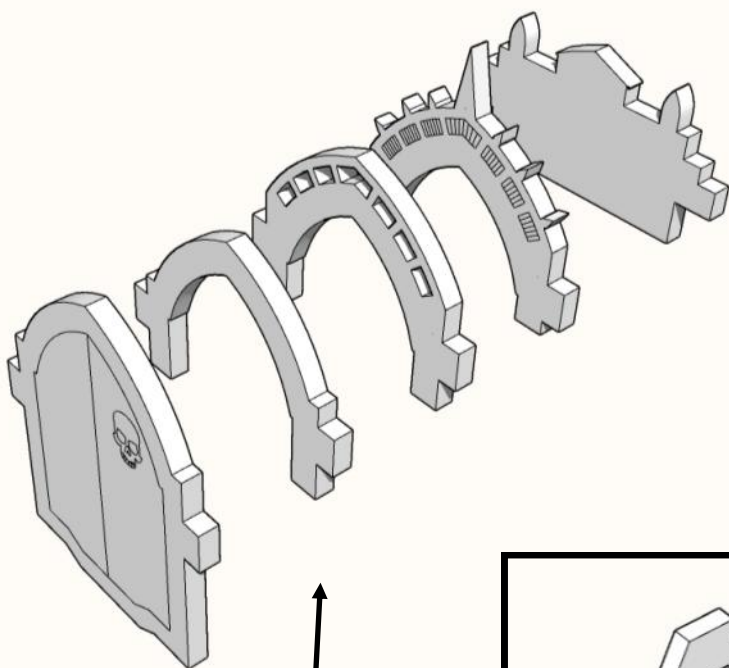


Note the differences between the Buttresses, as well as their positions.

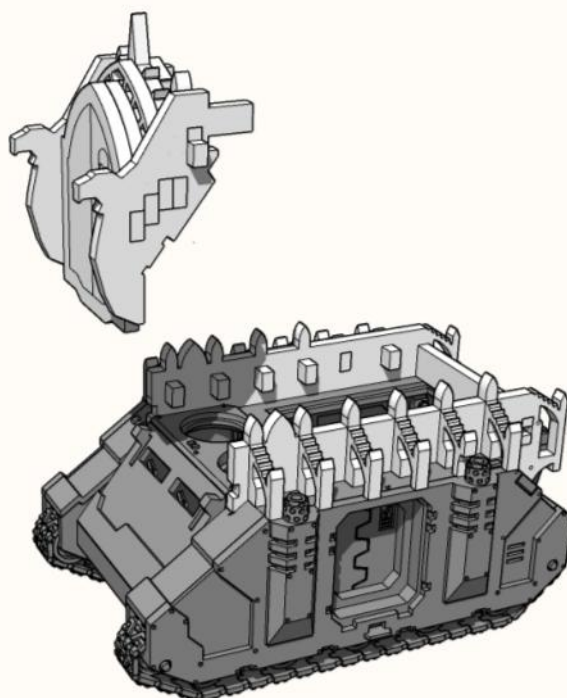
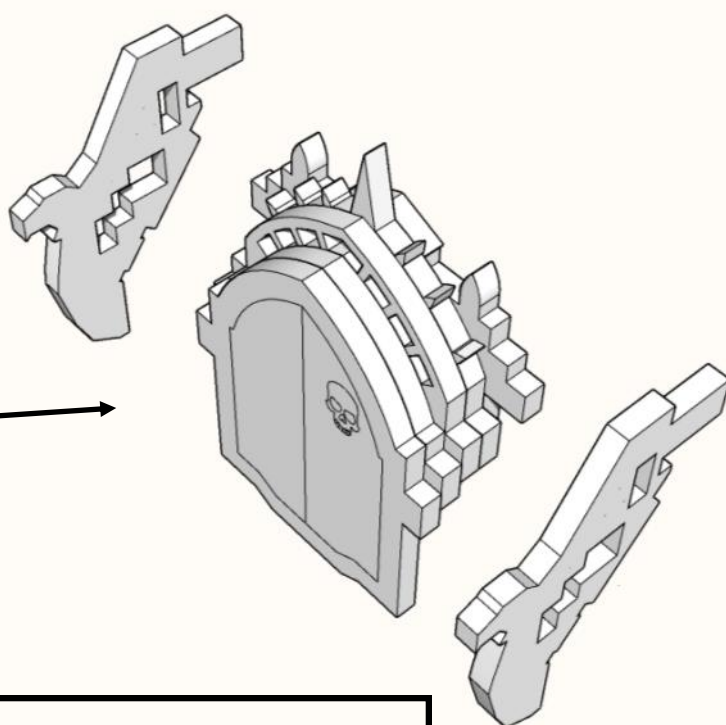


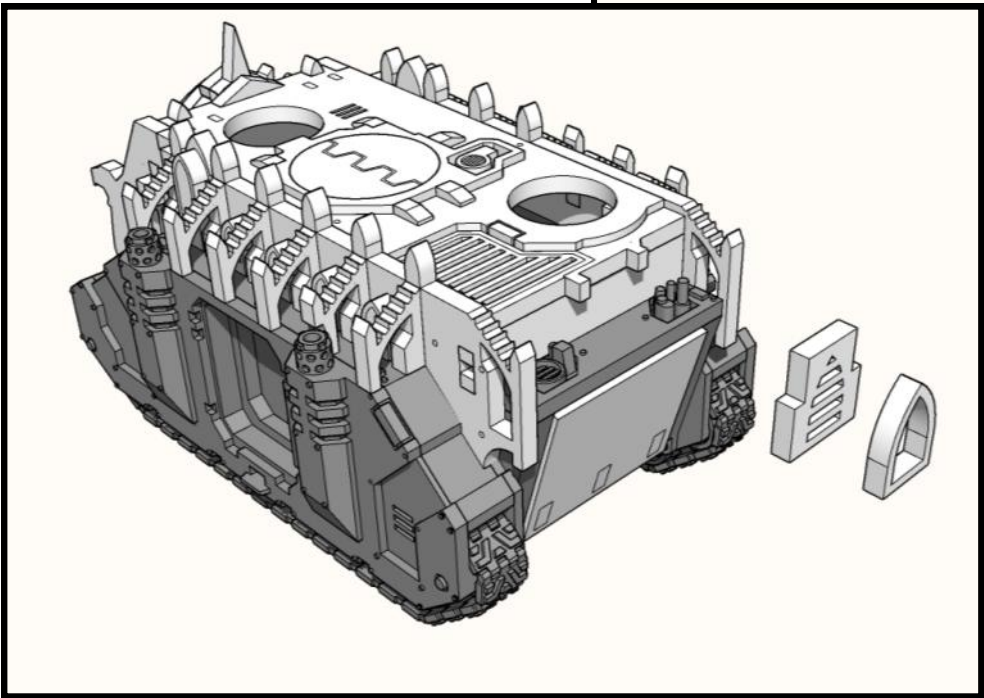
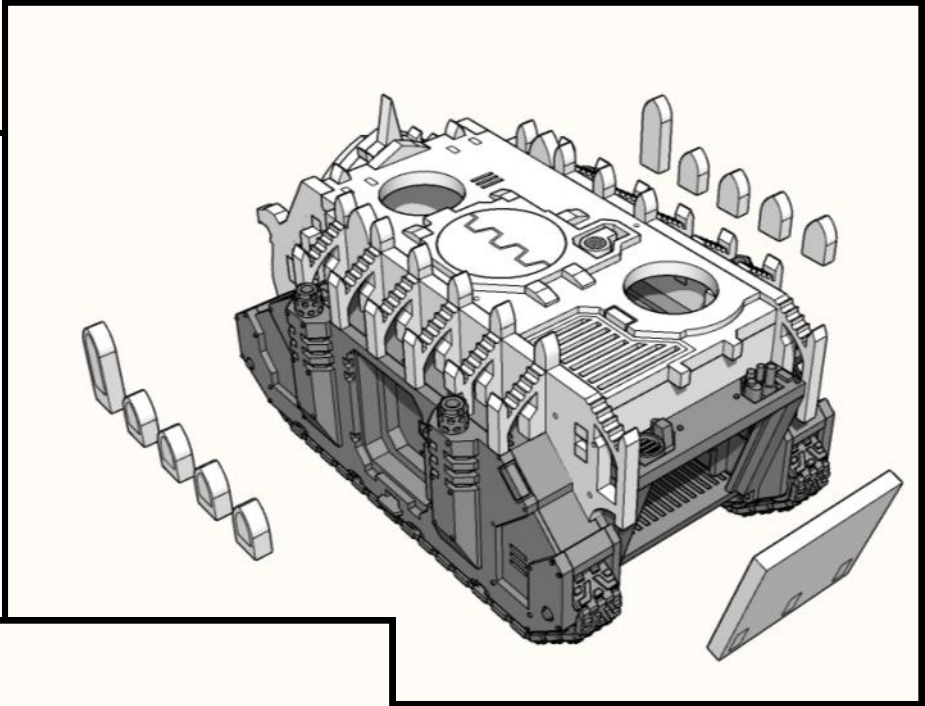
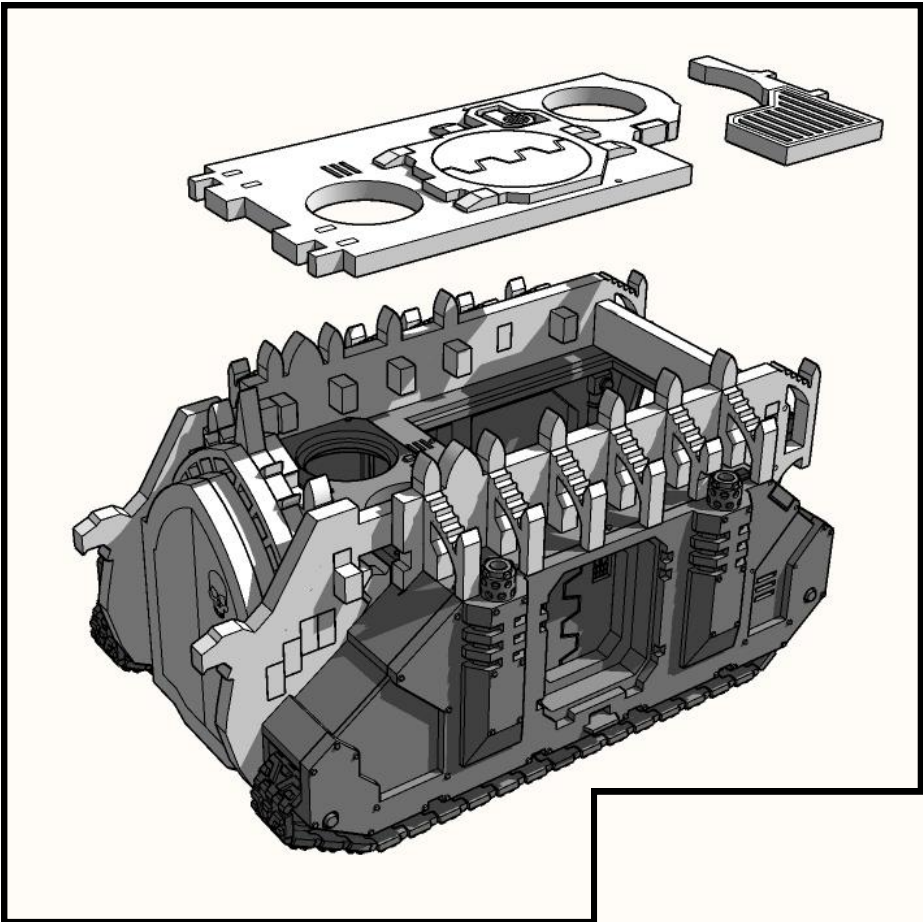


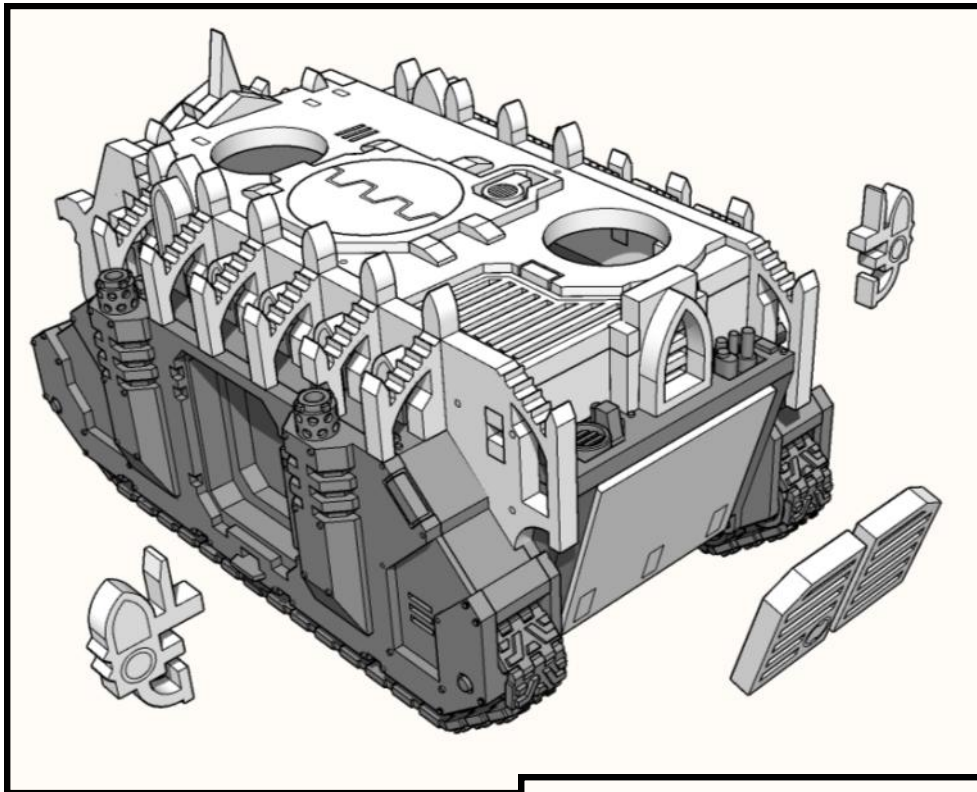




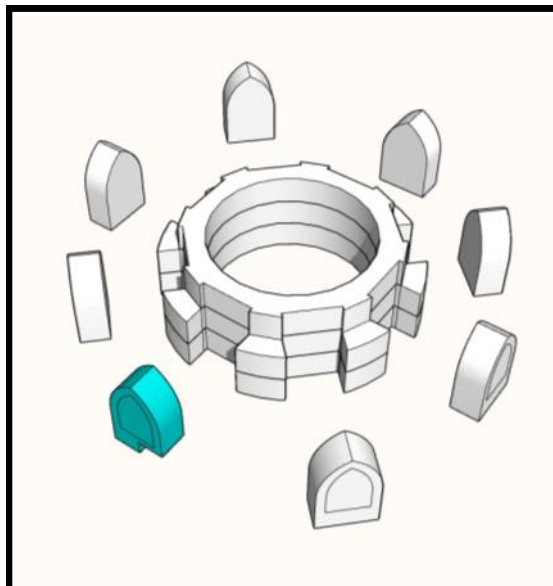
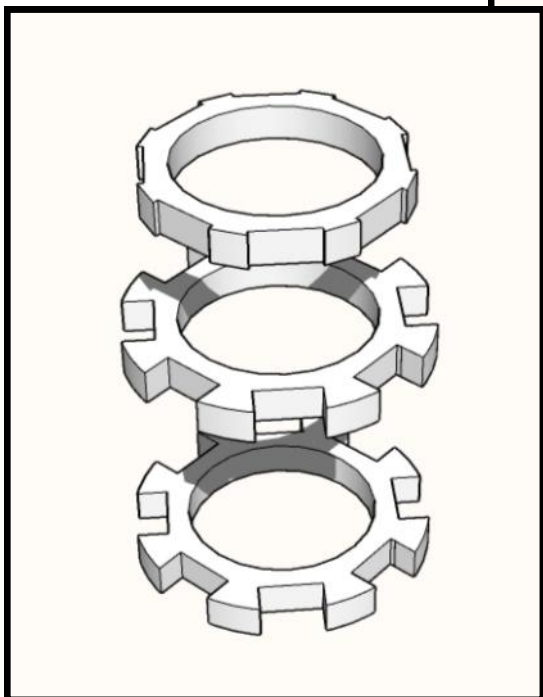
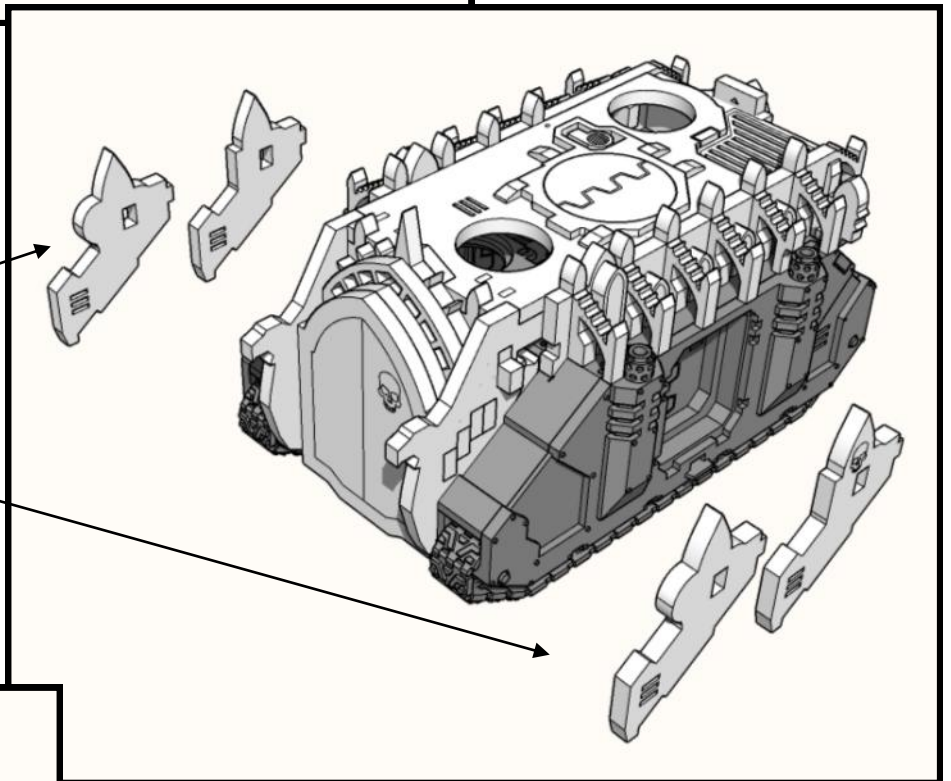
**It is easier to
assemble these
steps without glue.
Smear some glue
on the back when
you are done.**

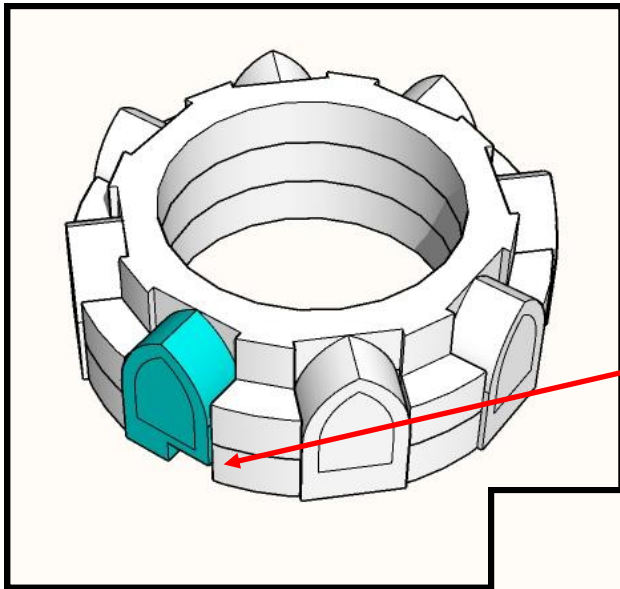




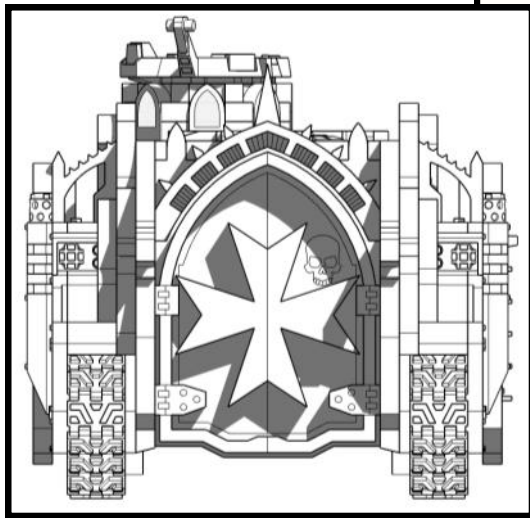


**Alternative parts.
Choose between
Fleur De Lis
Or
Small Skull.**





**Notch at front to
clear top surface
detail**



**Note the position of
the door frame.**

