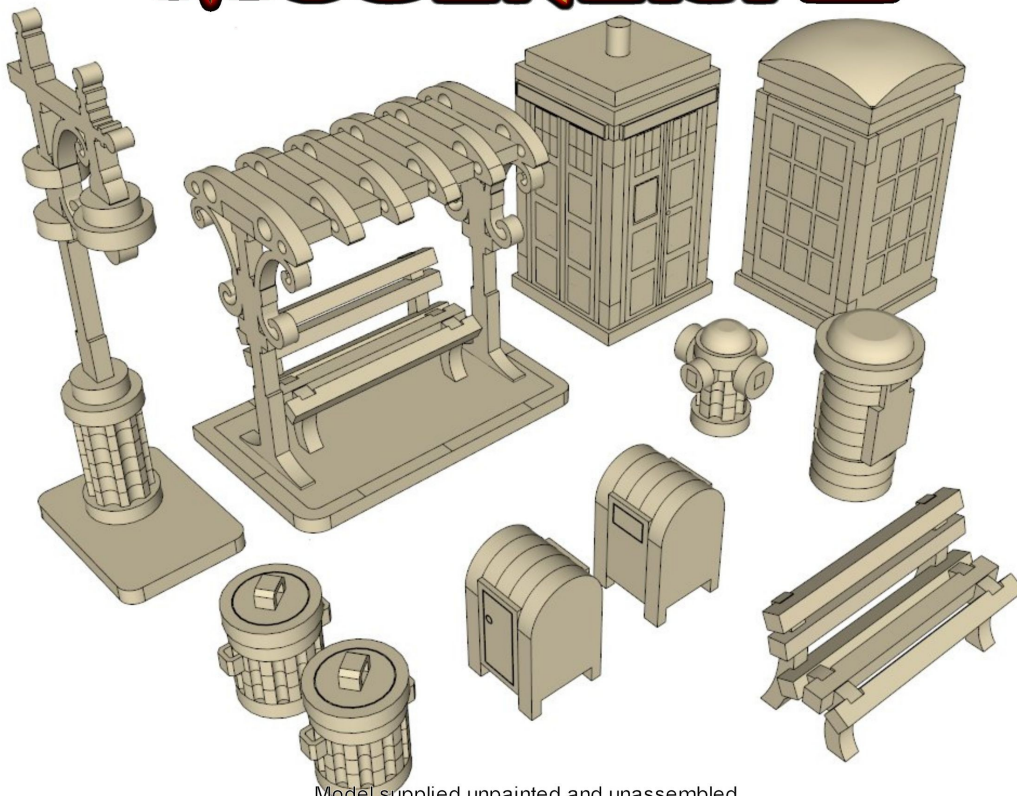


MINIATURE SCENERY



Model supplied unpainted and unassembled

STREET SCENERY 2

MINIATURE SCENERY MODELS ARE DESIGNED FOR 25MM (1 INCH) BASE MINIATURES, IDEAL FOR GAMERS AND COLLECTORS.

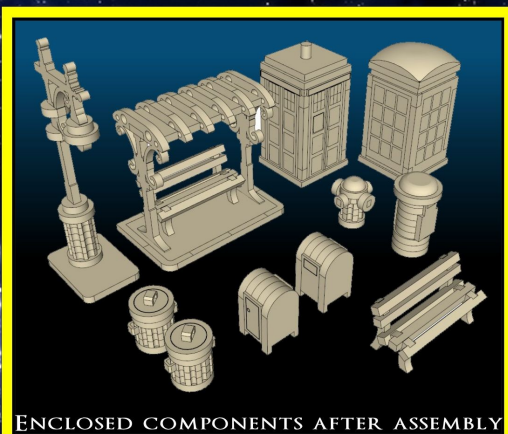
AT WWW.MINIATURESCENERY.COM WE PROVIDE DETAILED AND EASY TO FOLLOW ILLUSTRATED GUIDES FOR PAINTING TERRAIN.

THIS PACK CONTAINS **11** ITEMS:

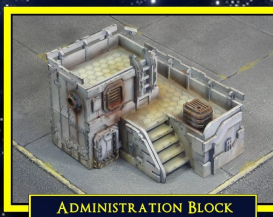
- TWO PHONE BOXES
- TWO DIFFERENT BENCHES
- THREE POST BOXES
- LAMP & TRASH CANS

THESE MODELS ARE DESIGNED FOR USE AS TERRAIN OR UNIQUE PLAYING PIECES.

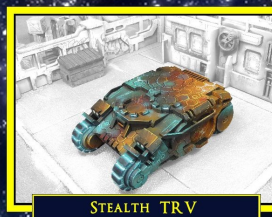
ALL INSTRUCTIONS AVAILABLE ONLINE AT [HTTP://WWW.MINIATURESCENERY.COM](http://WWW.MINIATURESCENERY.COM)



ENCLOSED COMPONENTS AFTER ASSEMBLY



ADMINISTRATION BLOCK



STEALTH TRV



HUMPTI TRUCK



STREET SCENERY 1



Preparation

Once you clear some table space you will need a hobby knife and glue (PVA, wood glue, hobby glue) and a file or small piece of sandpaper to be used for cleaning up any tiny imperfections.

It's a good idea to familiarise yourself with how the pieces fit together before gluing.

Getting Started

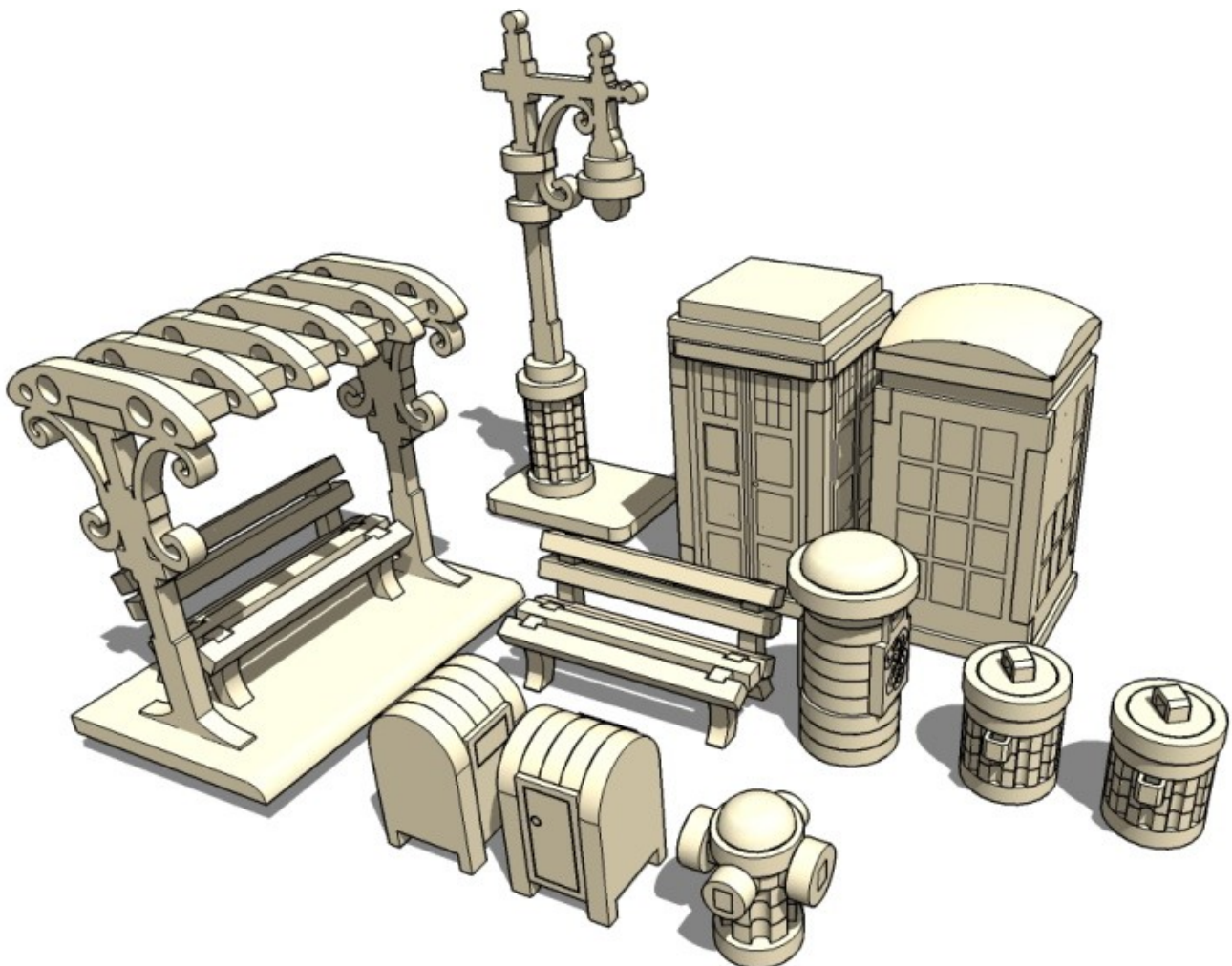
- I. Parts should remove easily from the board by pressing through and popping them out. It's a good idea to cut through the tiny joins first though, and some parts (particularly smaller, more detailed parts) may need more careful persuasion.
- II. Use a file or sand paper last to completely remove the tabs that might remain.
- III. Parts may be a very tight fit, slight trimming or sanding of parts may be needed for ease of assembly.

Construction

Slot the parts together as shown by the pictures below, applying glue wherever there is a connection.

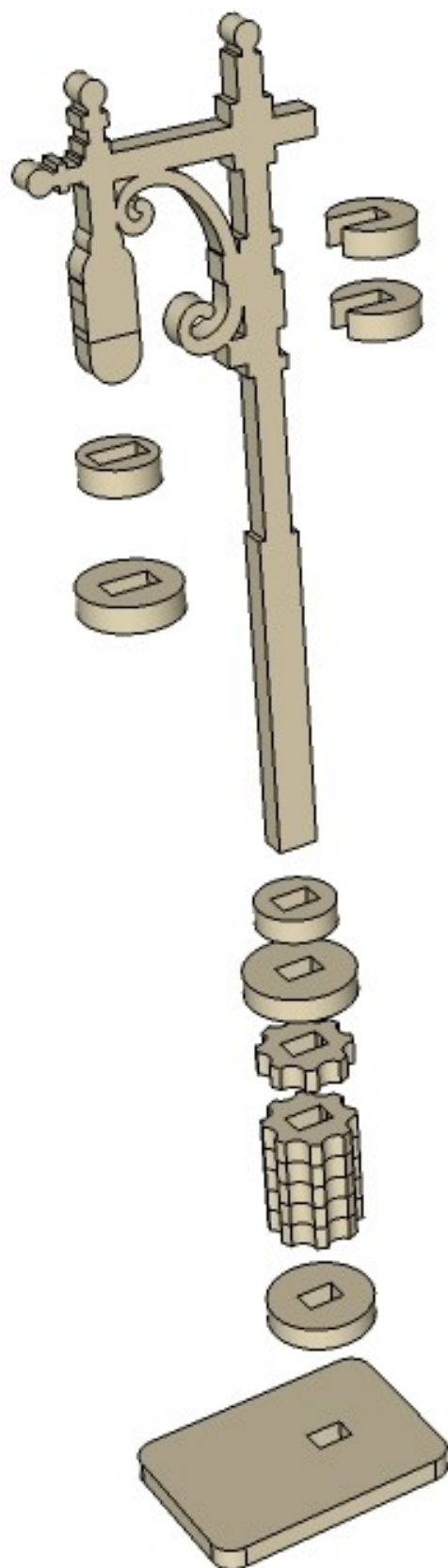
Allow the model to completely dry before painting it. This is a complex kit with many small parts. Allowing each section to dry thoroughly before heading to the next is strongly recommended.

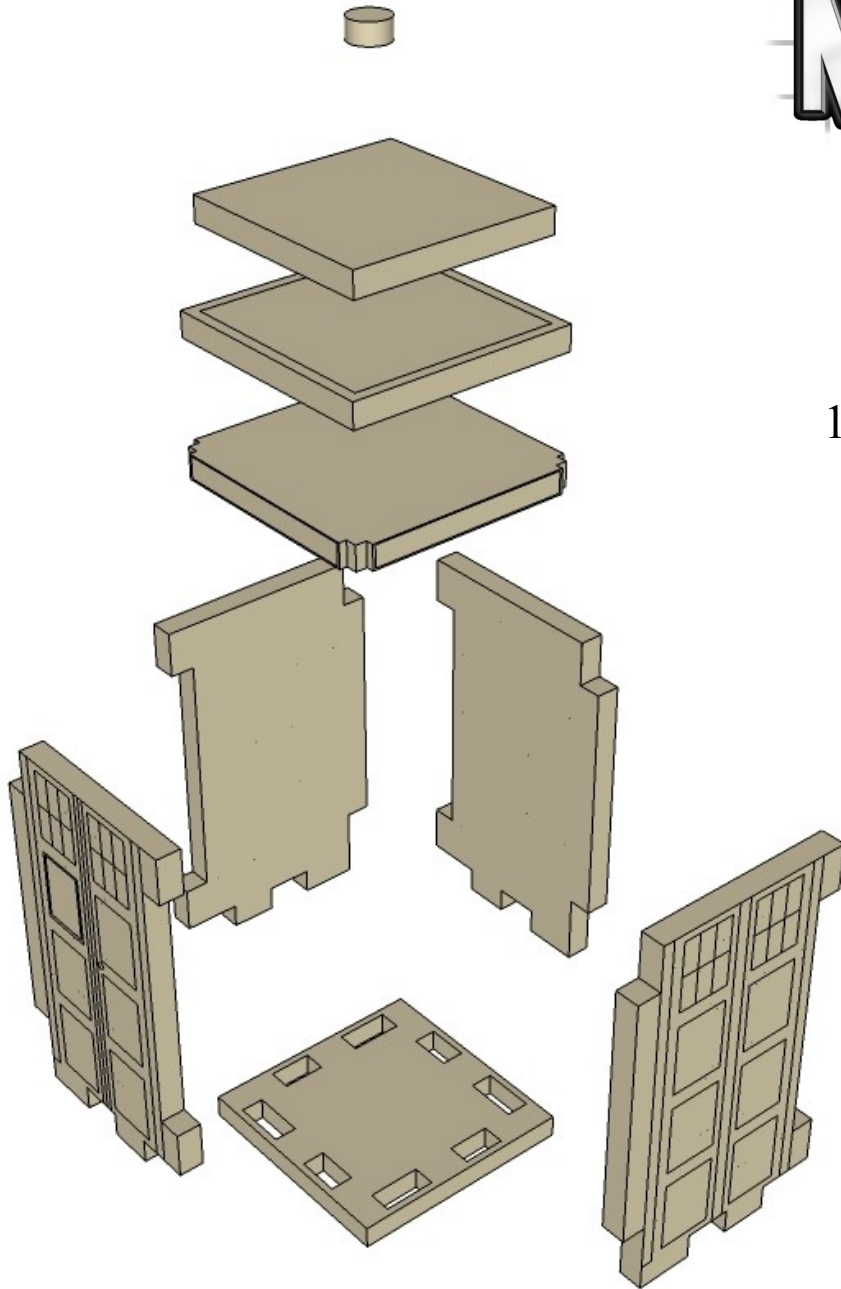
Some parts of this kit are very fine, or have engraving very close to edges. Make sure you cut through any tabs carefully with a hobby knife first to avoid damage.



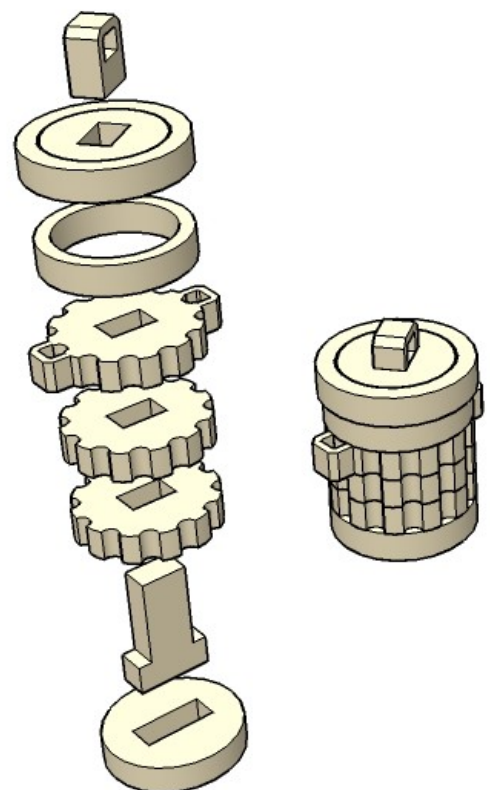
CNC WORKSHOP

MINIATURE SCENERY





1929 McKenzie-trench
Police Box.

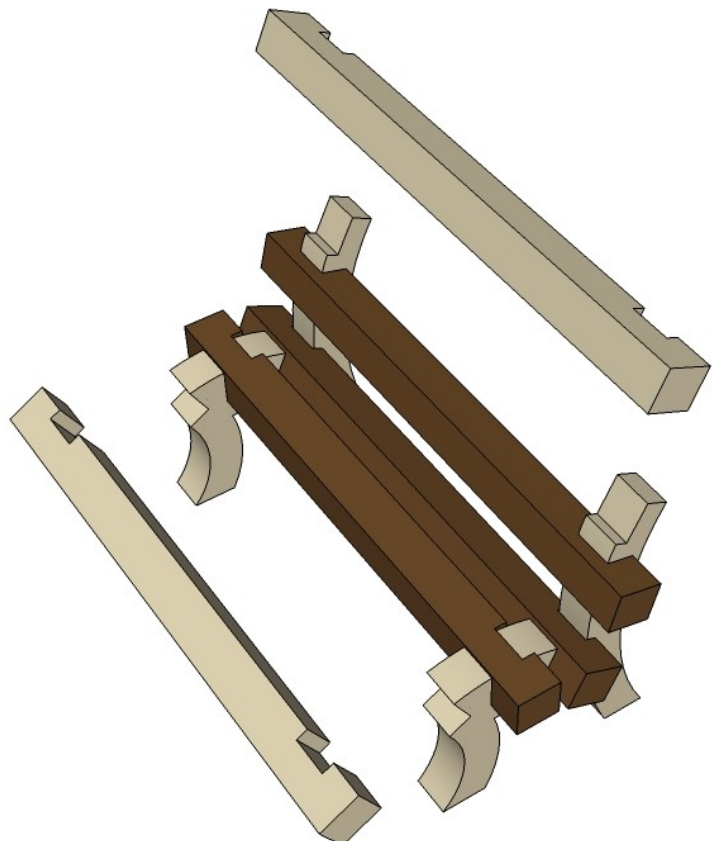
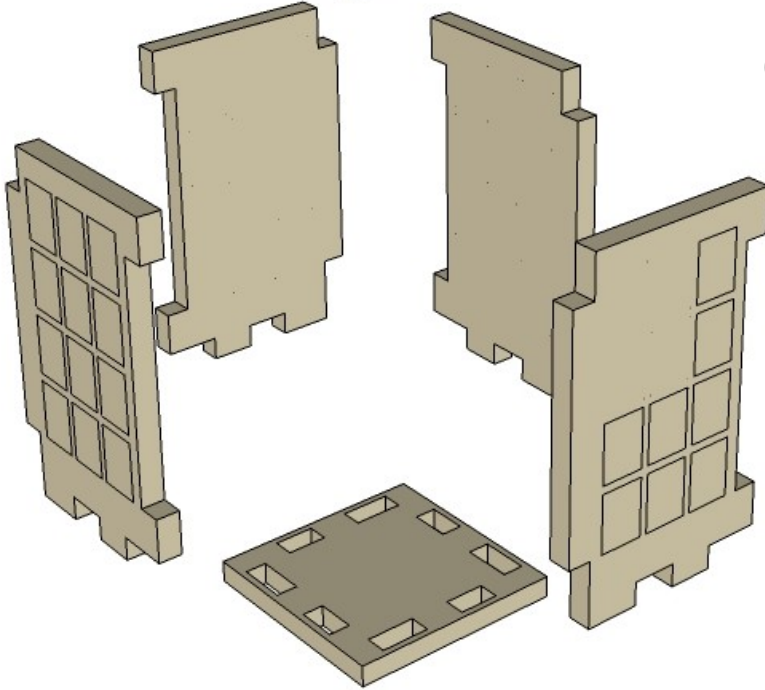




Phone Booth.

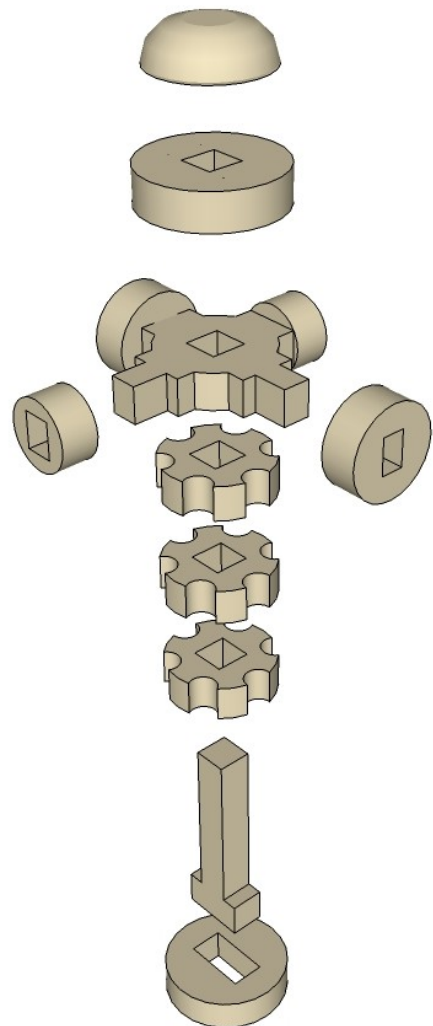
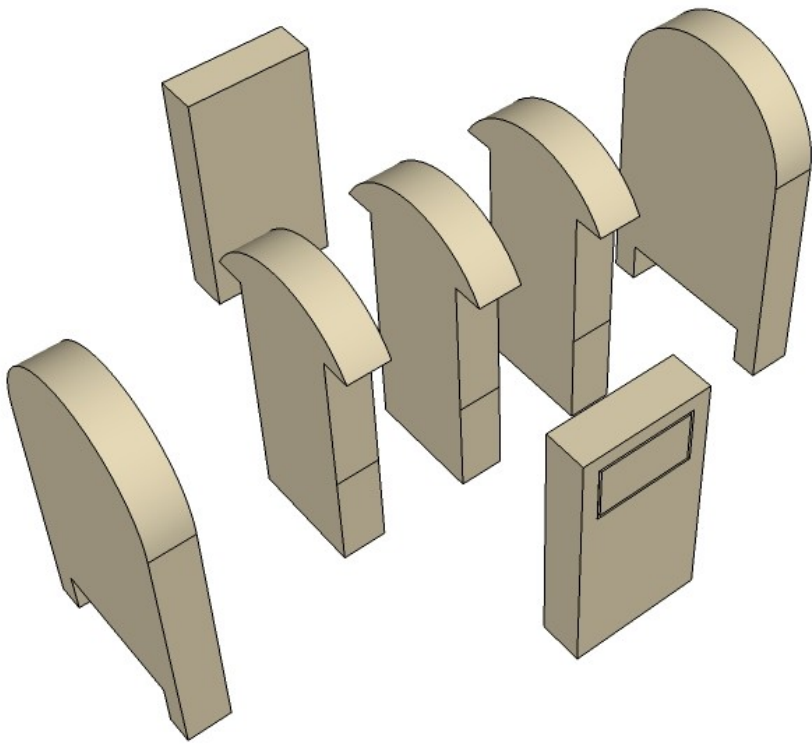
You'll have to chop and sand
the top of the box to the shape
shown.

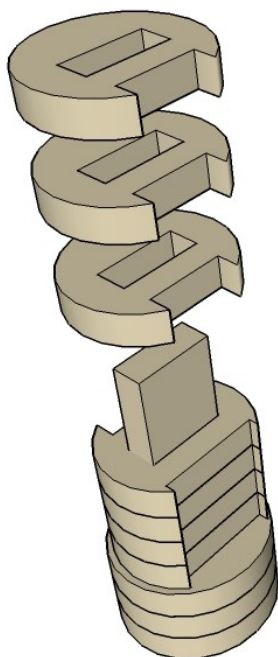
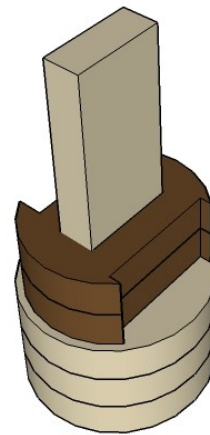
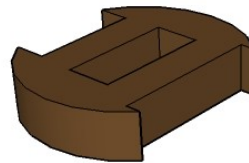
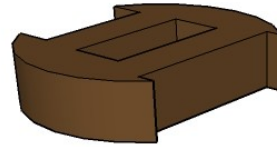
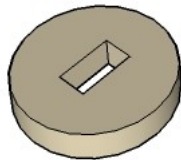
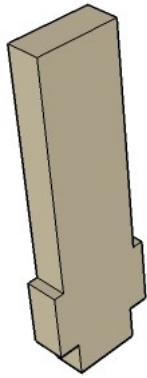
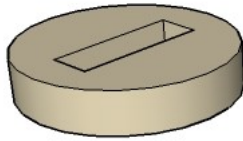
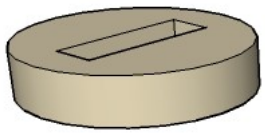
(made up of two stacked
pieces)



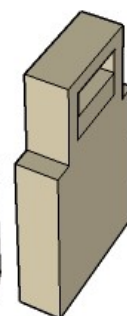
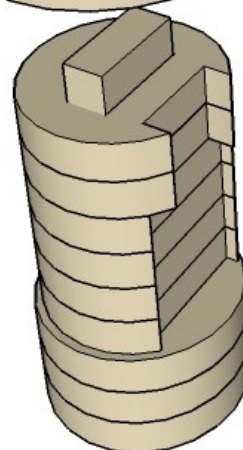
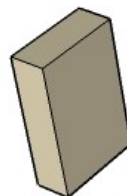
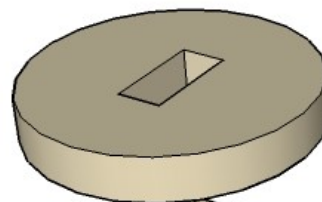
CNC WORKSHOP

MINIATURE SCENERY





Sand to
shape



CNC WORKSHOP

MINIATURE SCENERY

