

TWISTED

A STEAMPUNK SKIRMISH GAME

TERRAIN

Base Inserts



Designed and manufactured
in Australia by:

**MINIATURE
SCENERY**

www.miniaturescenery.com

Instructions

www.dementedgames.com





INSTRUCTIONS

BASE INSERTS

Preparation

Once you clear some table space you will need a hobby knife and glue (PVA, wood glue, hobby glue) and a pair of tweezers.

It's a good idea to familiarise yourself with how the pieces fit together before gluing.

TIP: To stick the card parts to the plastic base try brushing a thin layer of PVA onto the bottom of the card parts and allow it to dry before fixing the base in position with superglue.

Getting Started

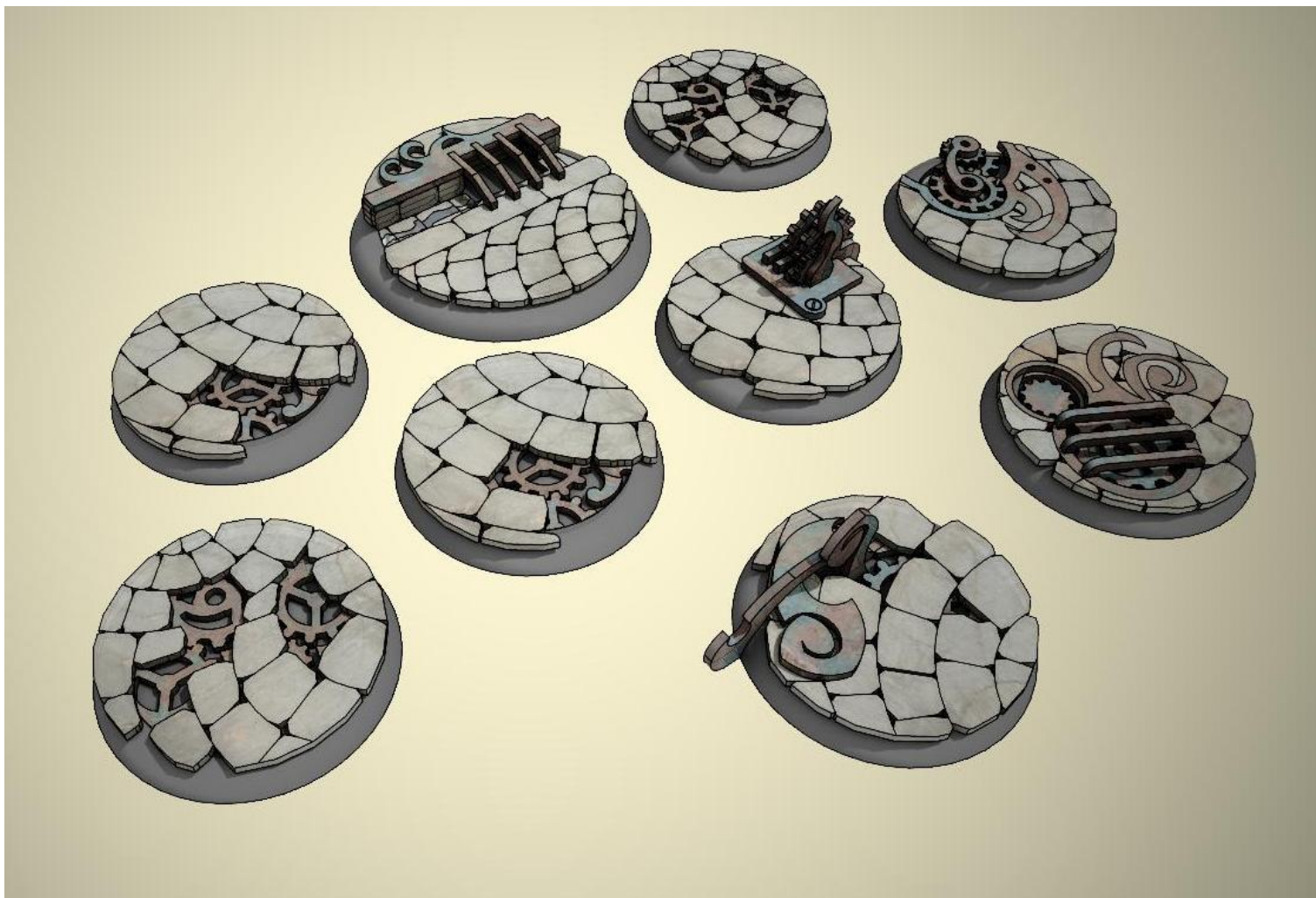
I. It's a good idea to cut through the tiny joins in the card sheet first. Some parts (particularly smaller, more detailed parts) may need more careful persuasion.

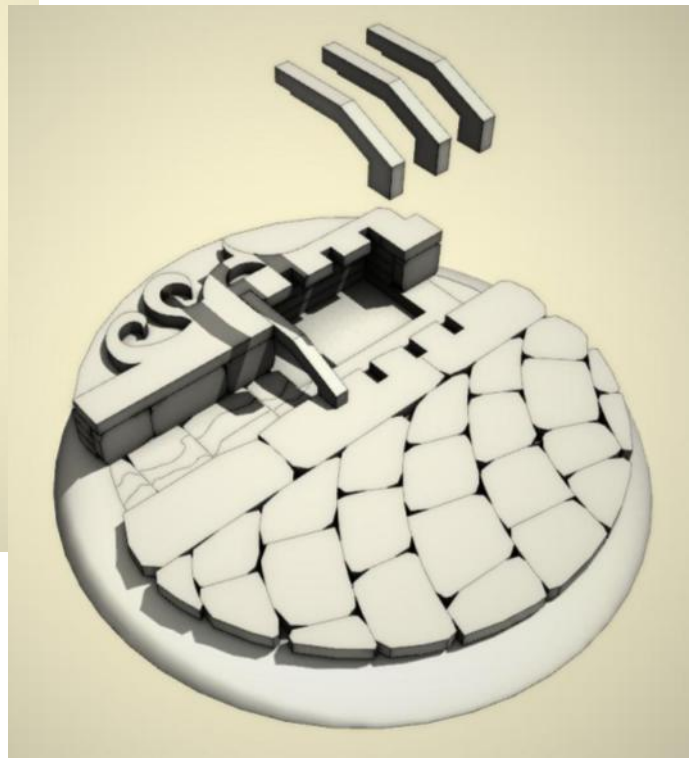
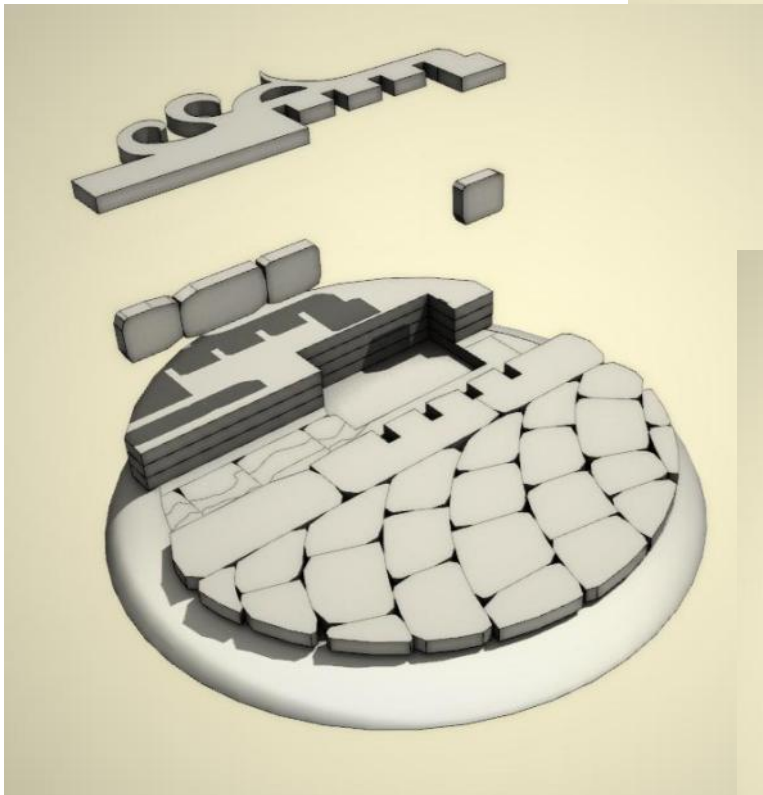
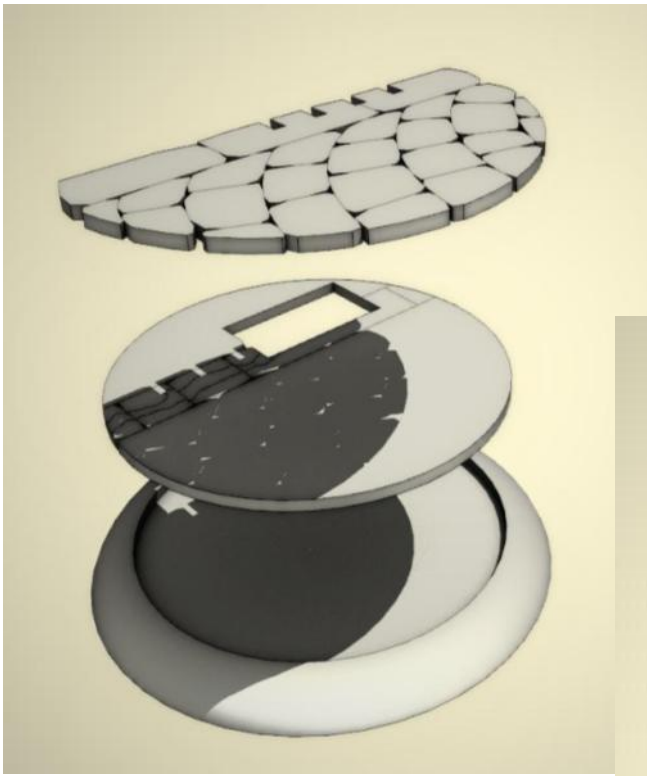
II. We Recommend after the Glue has dried, to drip a layer of thin superglue onto the card parts the give additional strength .

Construction

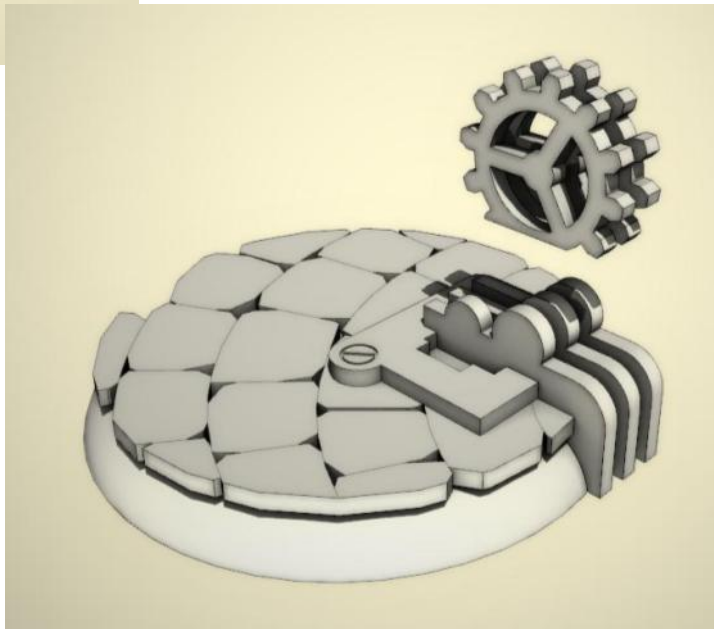
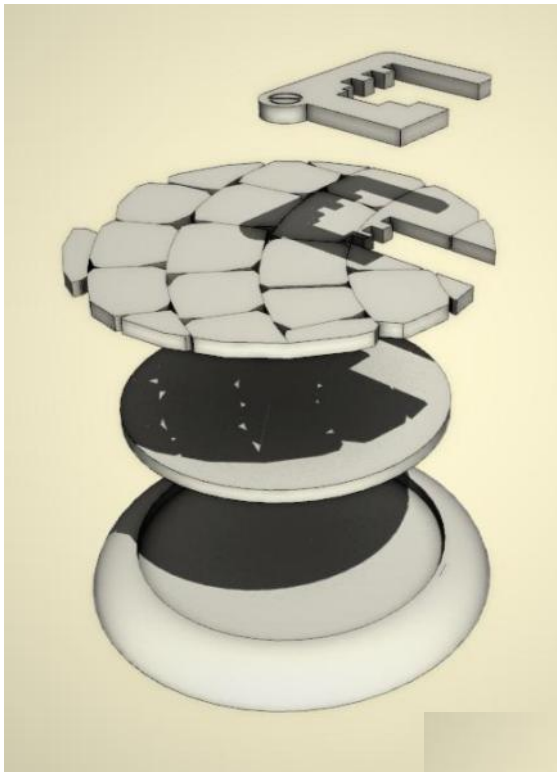
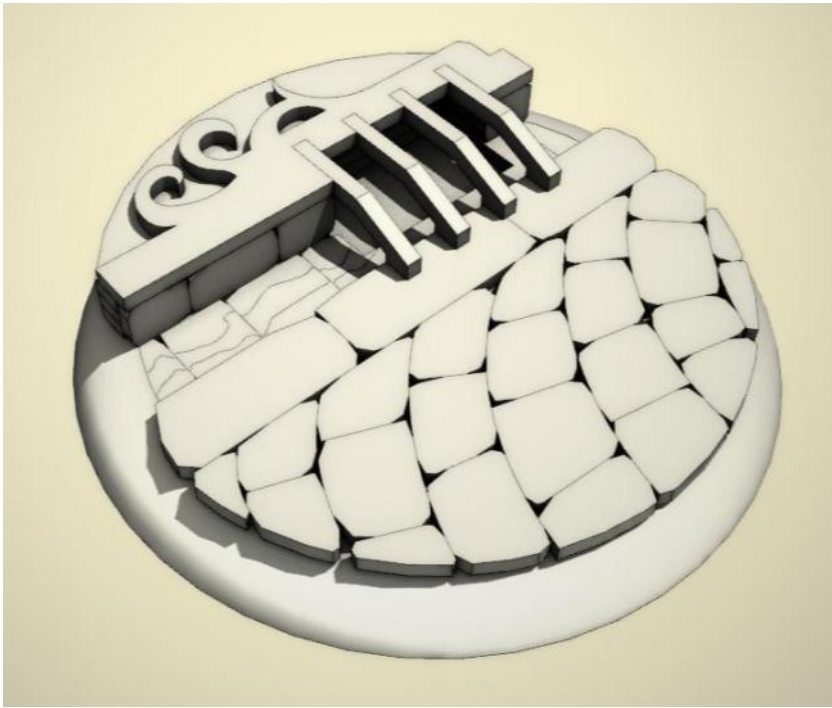
Slot the parts together as shown by the pictures below, applying glue wherever there is a connection.

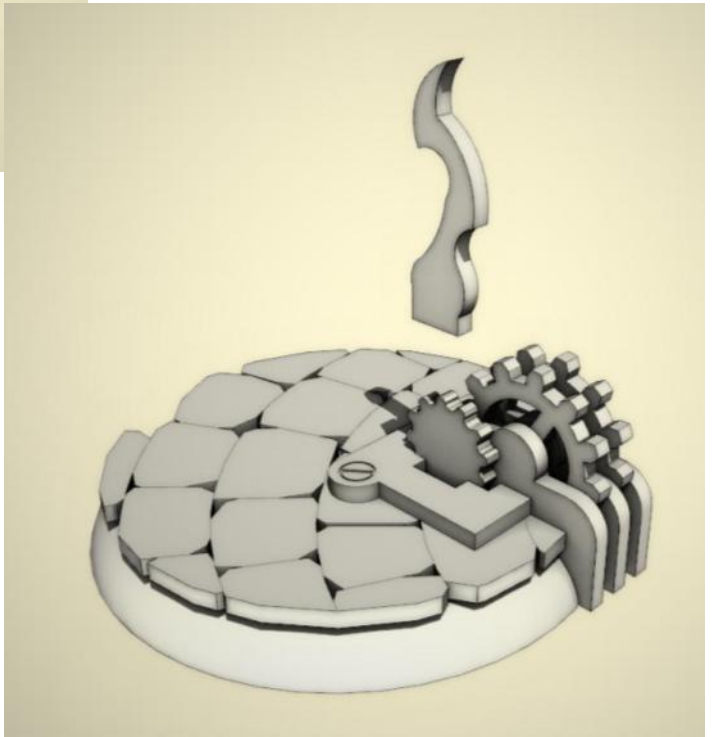
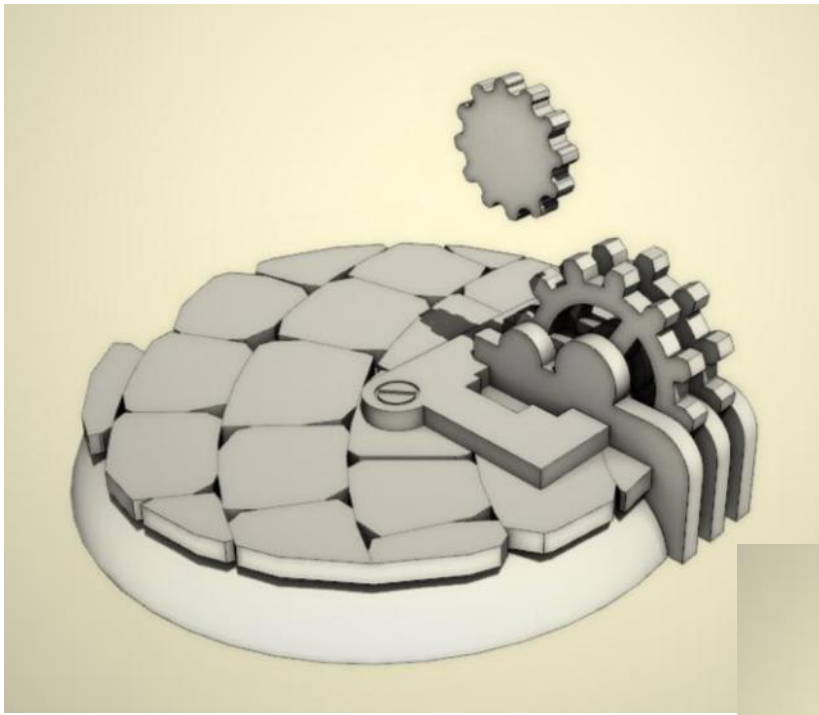
Allow the model to completely dry before painting it. This may be a complex kit with many small parts. Allowing each section to dry thoroughly before heading to the next is strongly recommended.

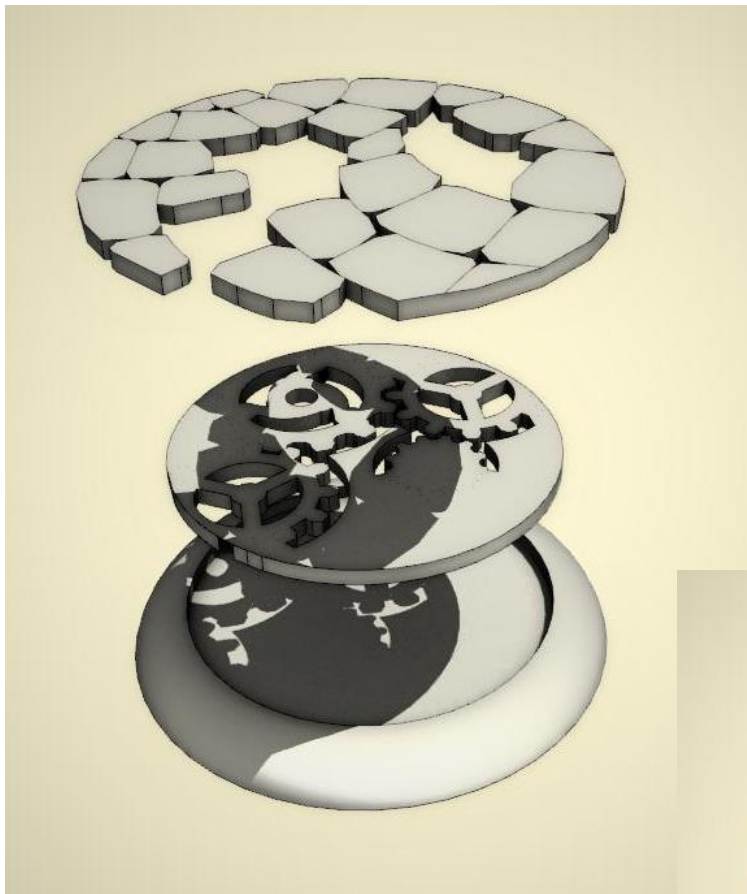




YOU'RE GOING TO
NEED TWEEZERS
FOR THIS.







MAKE TWO
EACH OF
THESE

