

TWISTED

A STEAMPUNK SKIRMISH GAME

TERRAIN

The Old Corner Shop



Designed and manufactured
in Australia by:

**MINIATURE
SCENERY**

www.miniaturescenery.com

Instructions

www.dementedgames.com





INSTRUCTIONS

THE OLD CORNER SHOP

Preparation

Once you clear some table space you will need a hobby knife and glue (PVA, wood glue, hobby glue) and a file or small piece of sandpaper to be used for cleaning up any tiny imperfections.

It's a good idea to familiarise yourself with how the pieces fit together before gluing.

Getting Started

I. Parts should remove easily from the board by pressing through and popping them out. It's a good idea to cut through the tiny joins first though, and some parts (particularly smaller, more detailed parts) may need more careful persuasion.

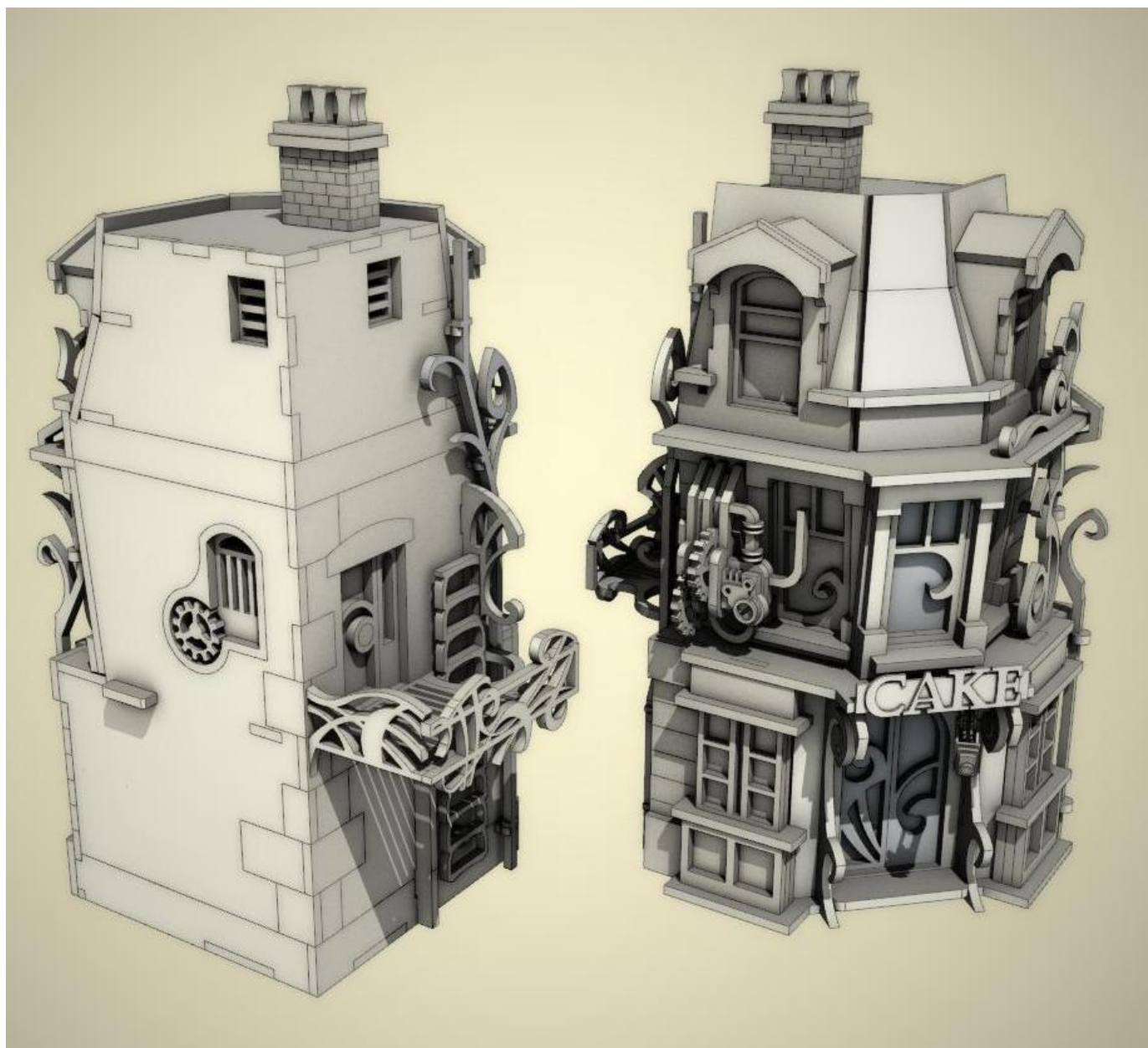
II. Use a file or sand paper last to completely remove the tabs that might remain.

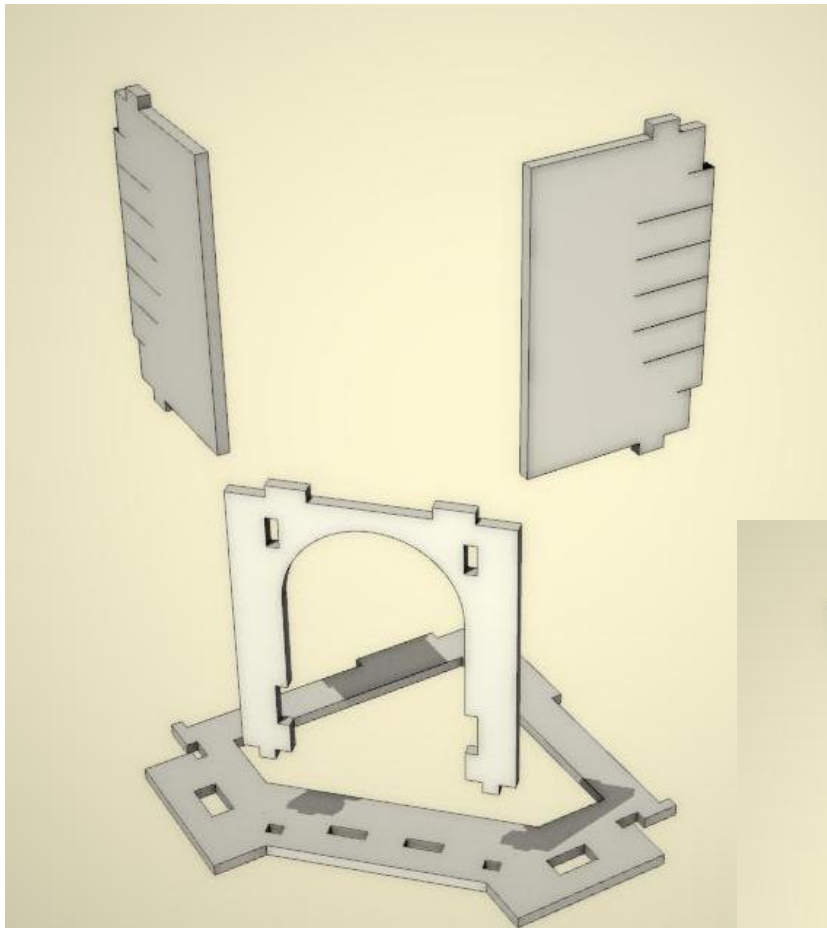
III. Parts may be a very tight fit, slight trimming or sanding of parts may be needed for ease of assembly.

Construction

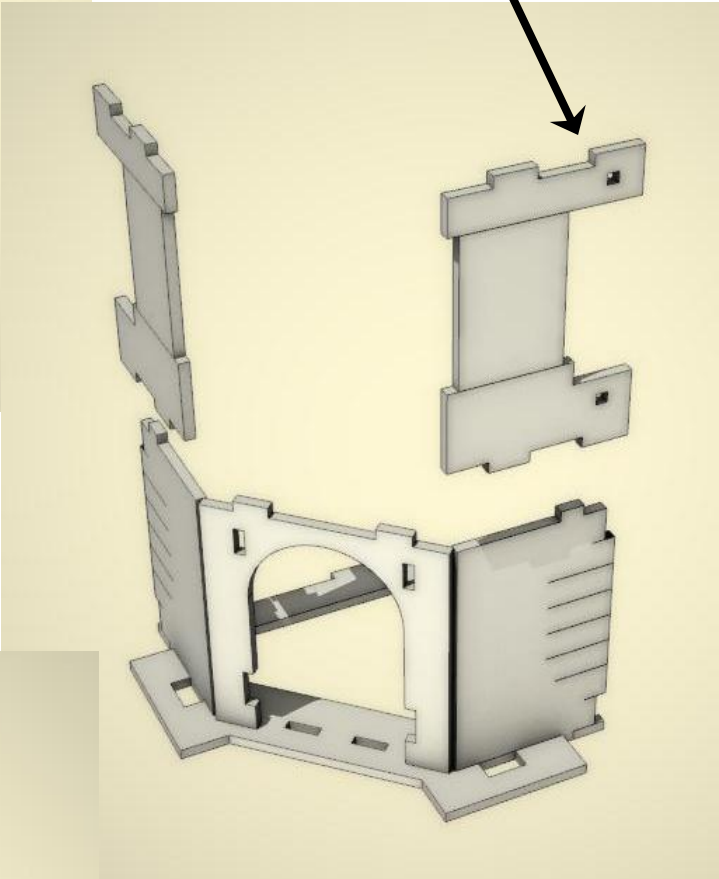
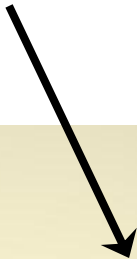
Slot the parts together as shown by the pictures below, applying glue wherever there is a connection.

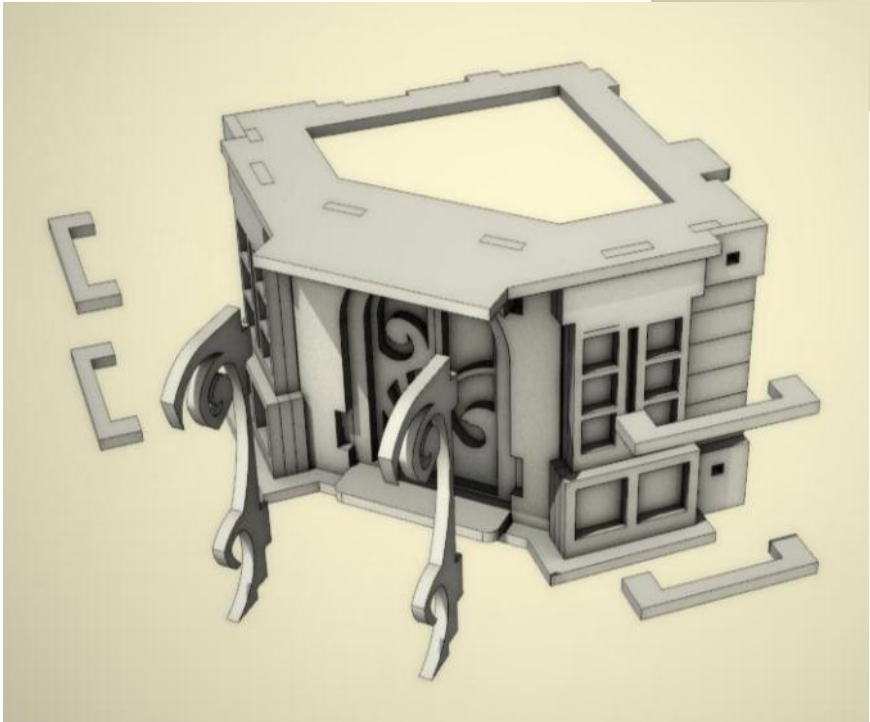
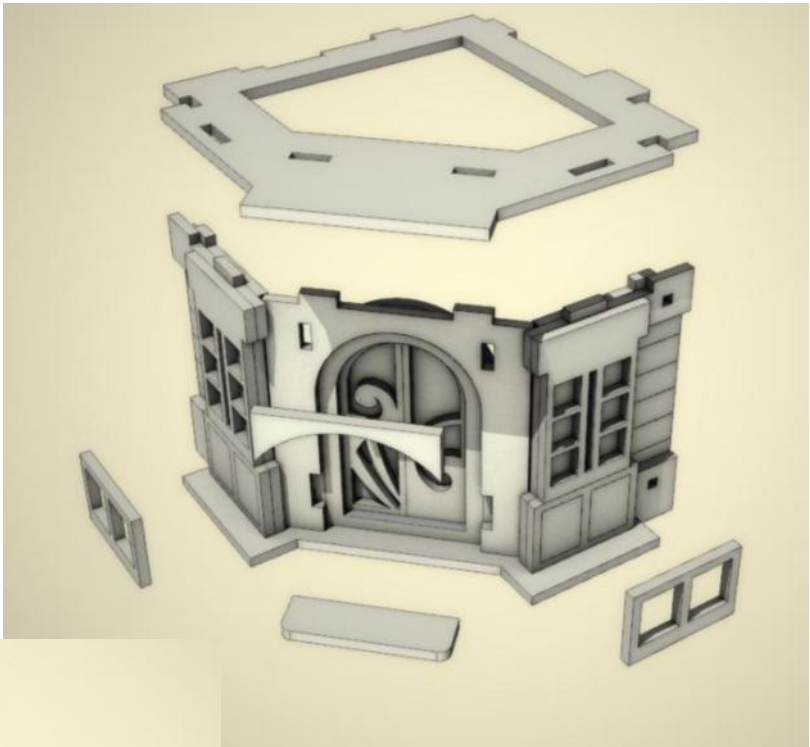
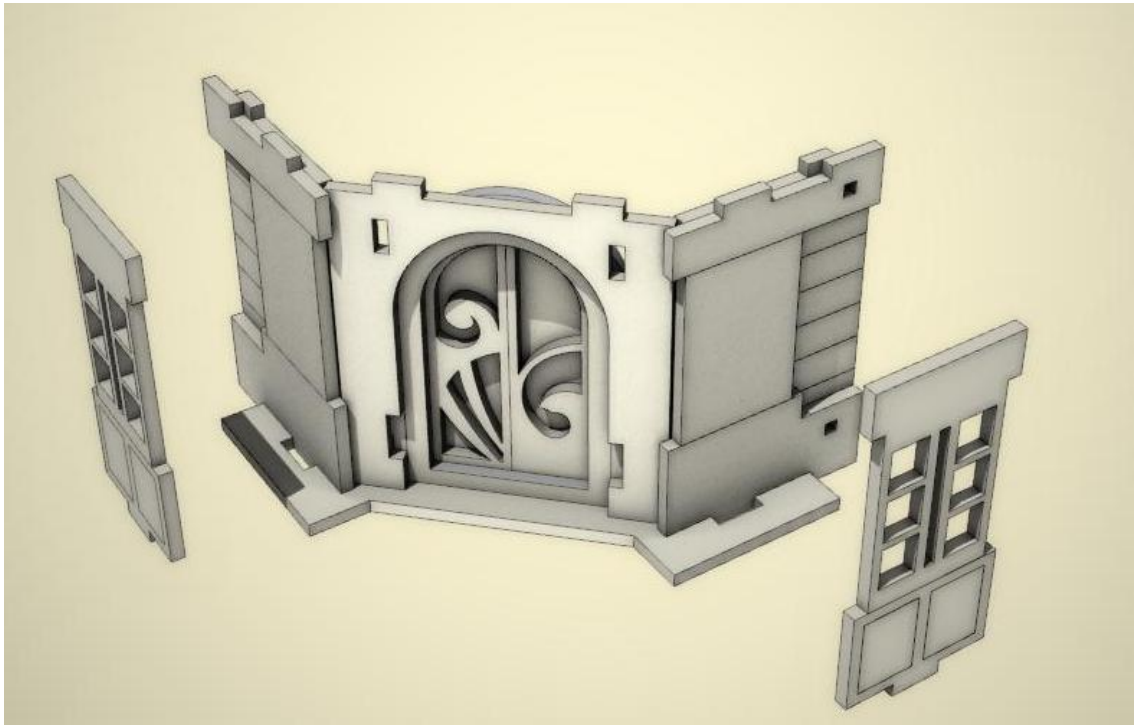
Allow the model to completely dry before painting it. This may be a complex kit with many small parts. Allowing each section to dry thoroughly before heading to the next is strongly recommended.

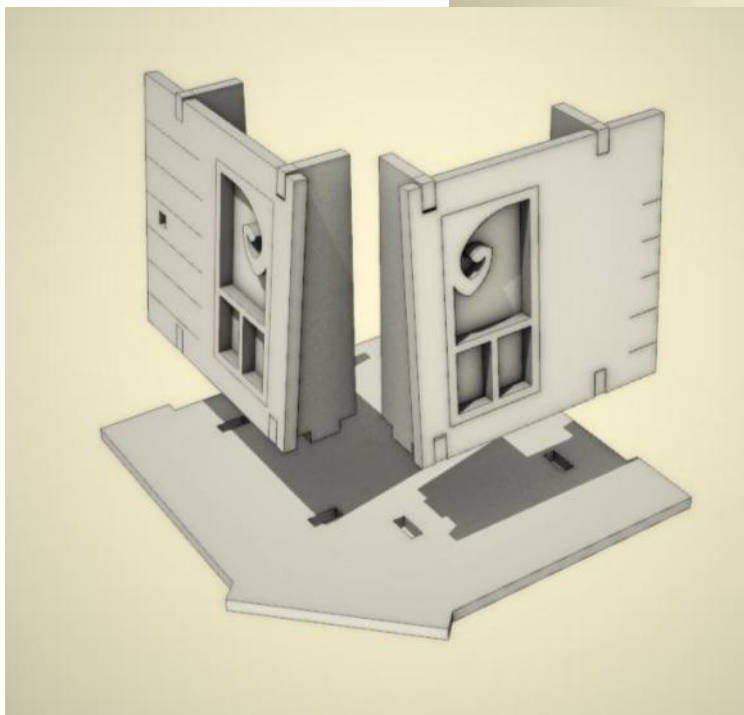
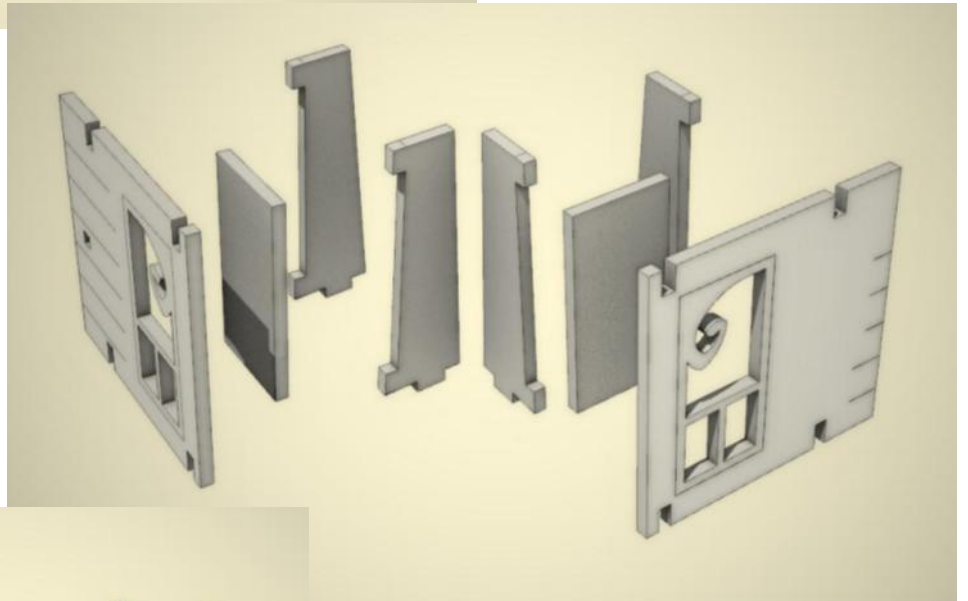
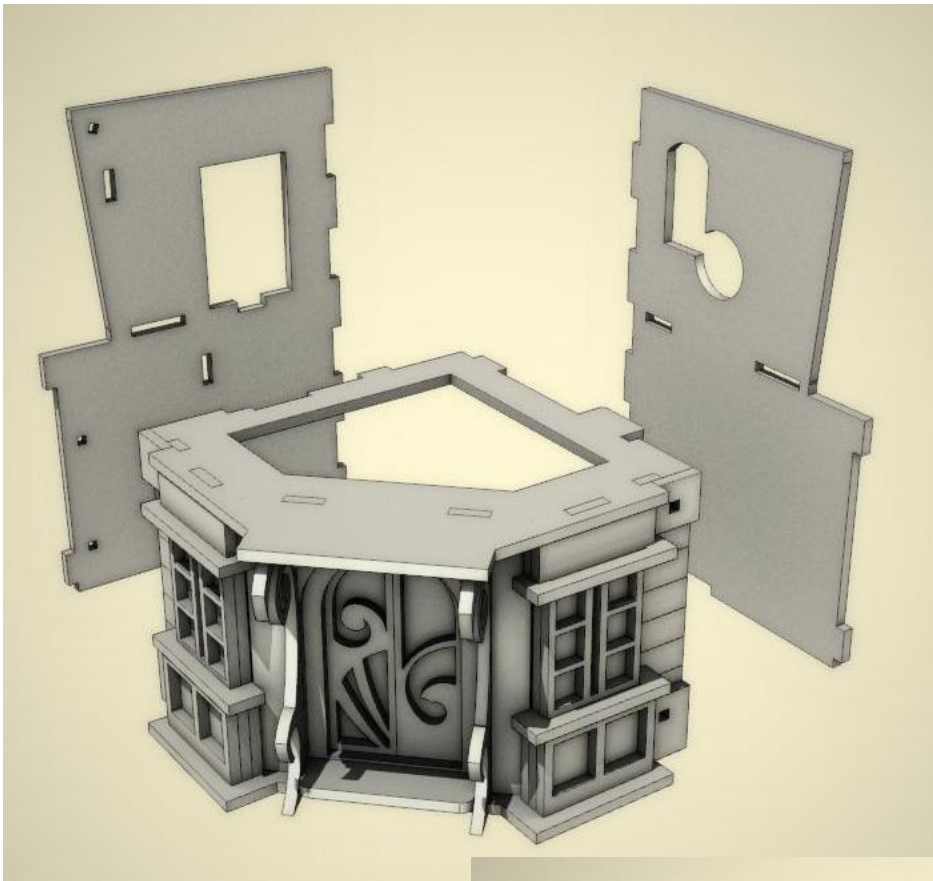




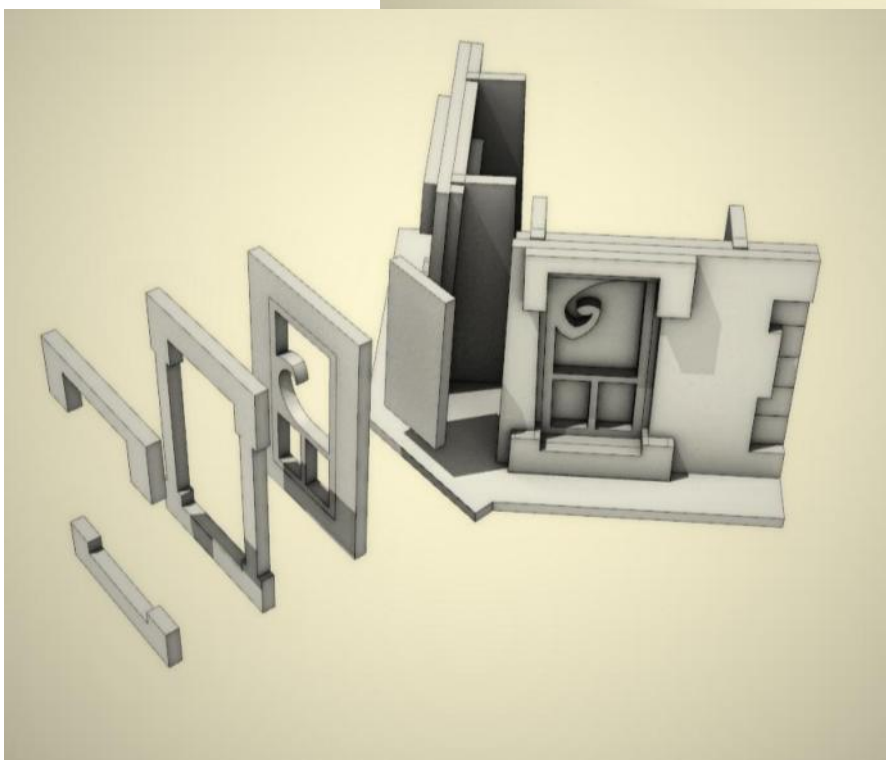
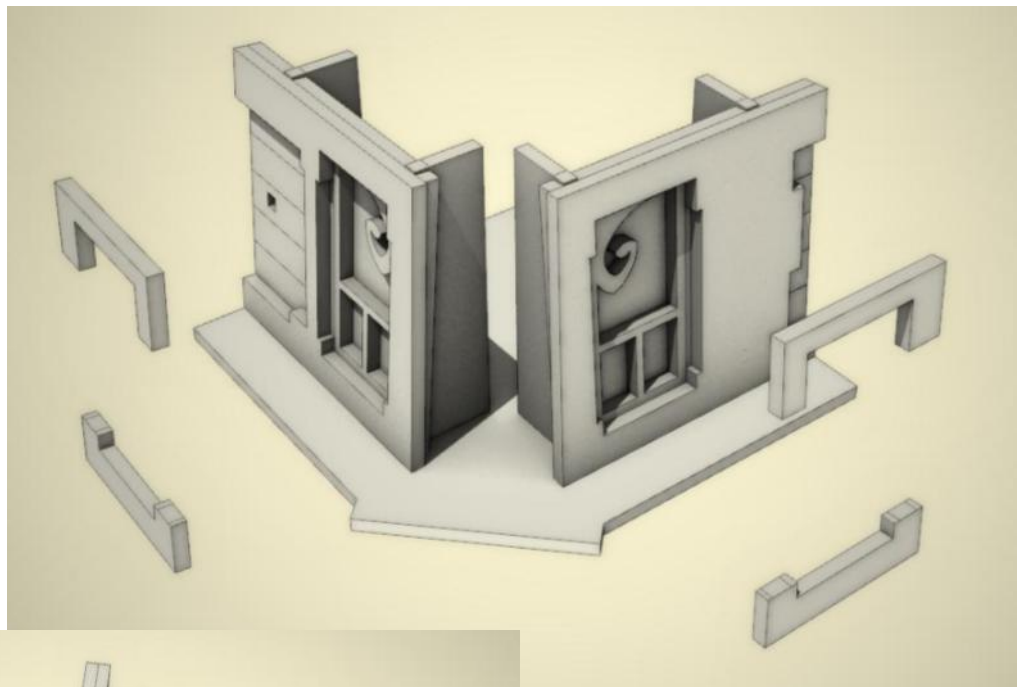
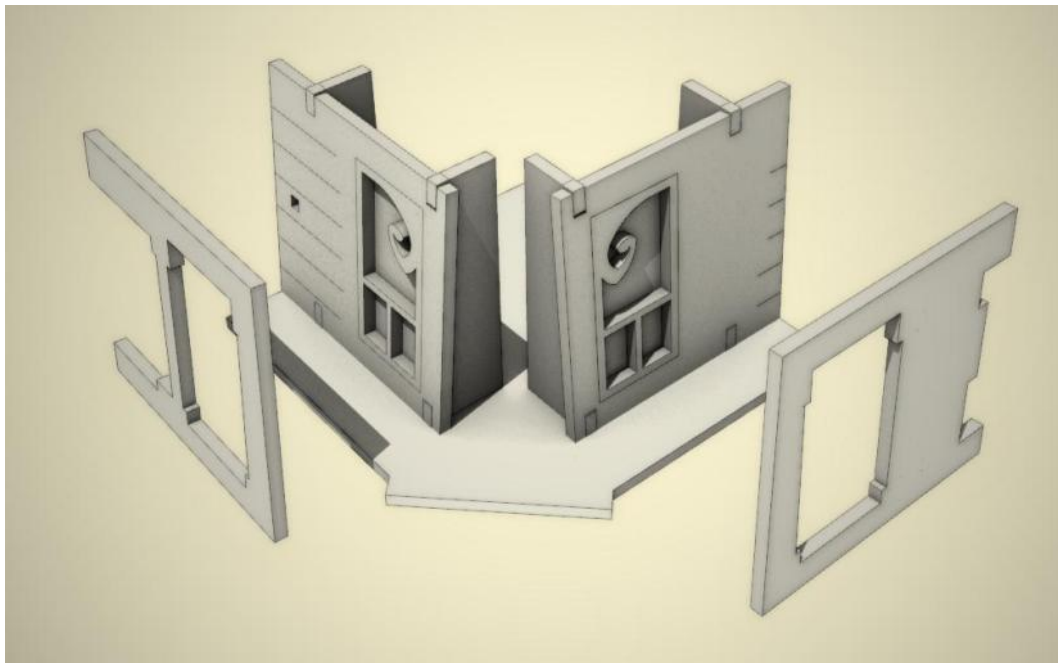
**NOTE:
HOLES ON THIS
SIDE ONLY.**

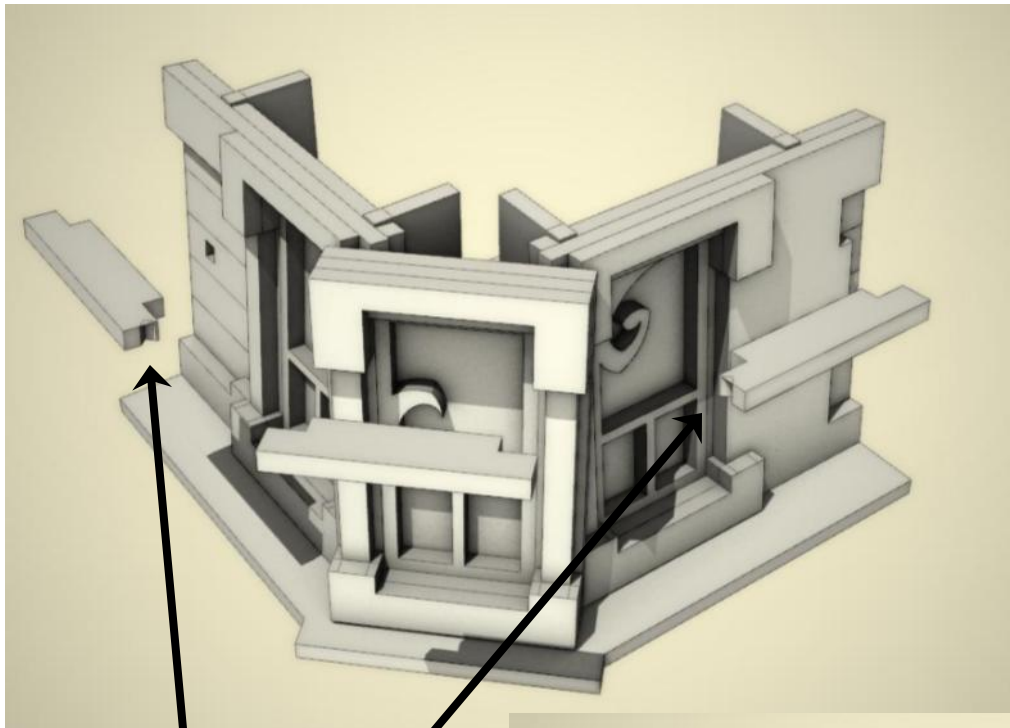




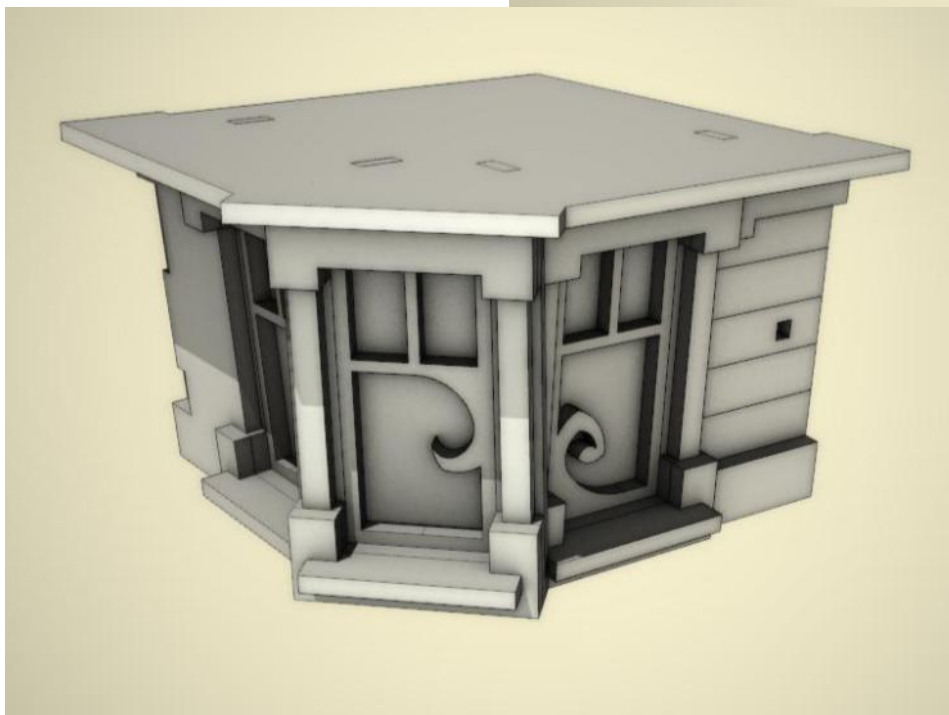
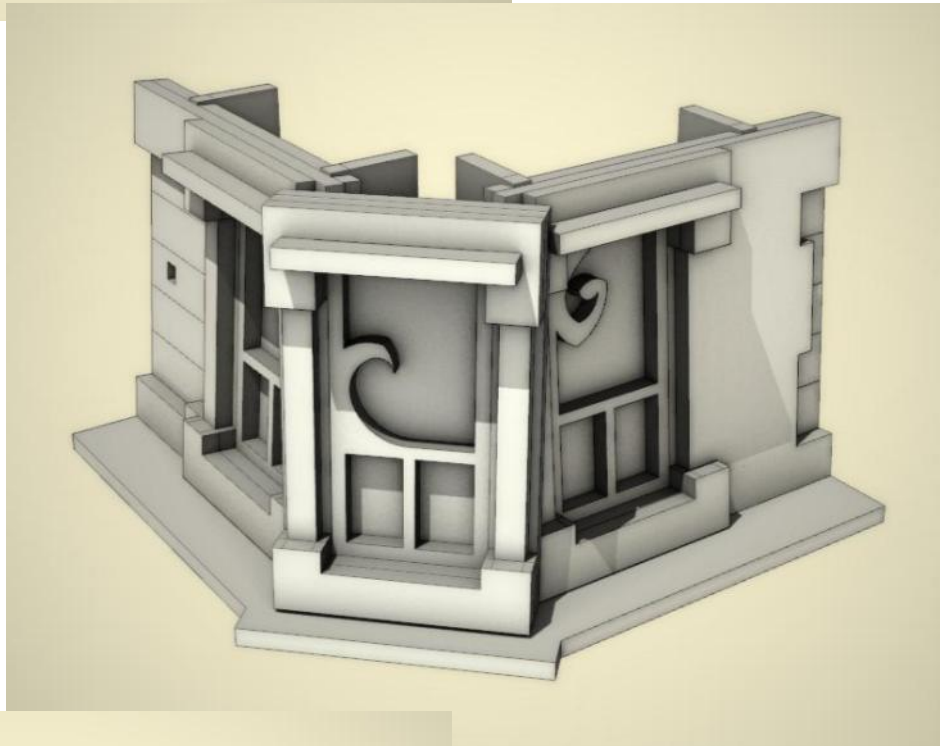


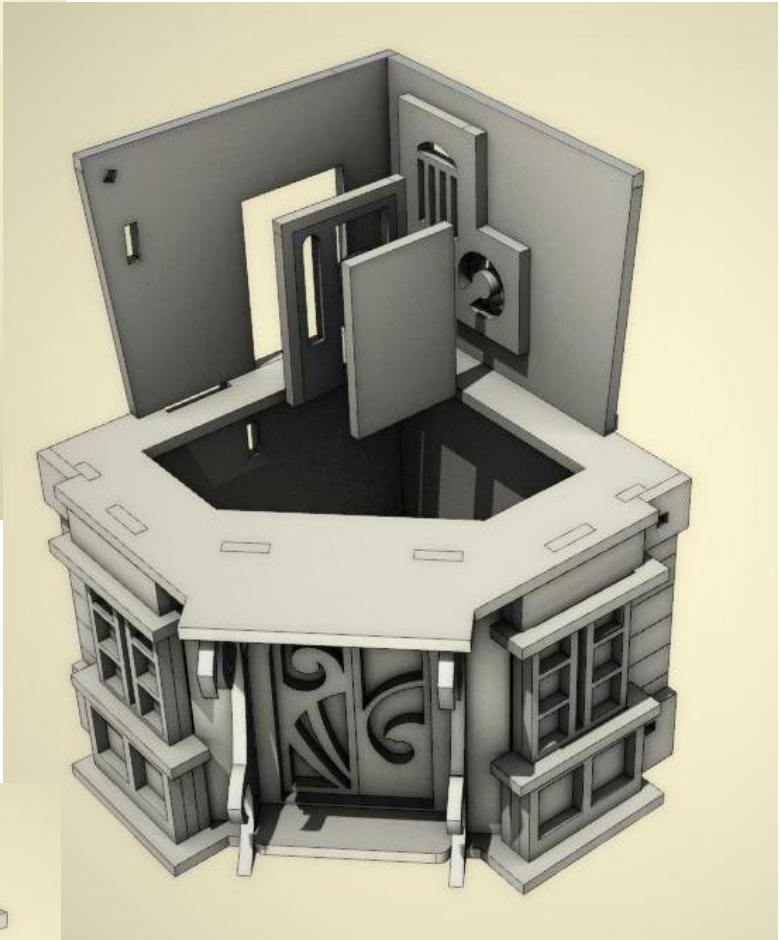
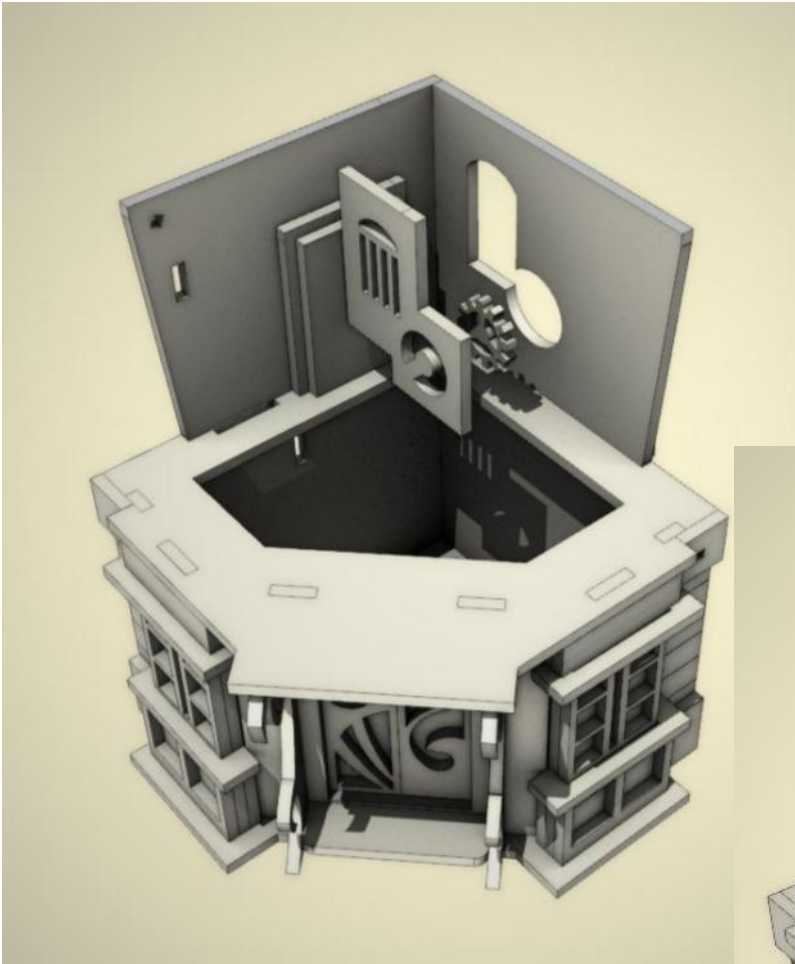
**ASSEMBLY SHOWN
UPSIDE-DOWN FOR
CLARITY.**

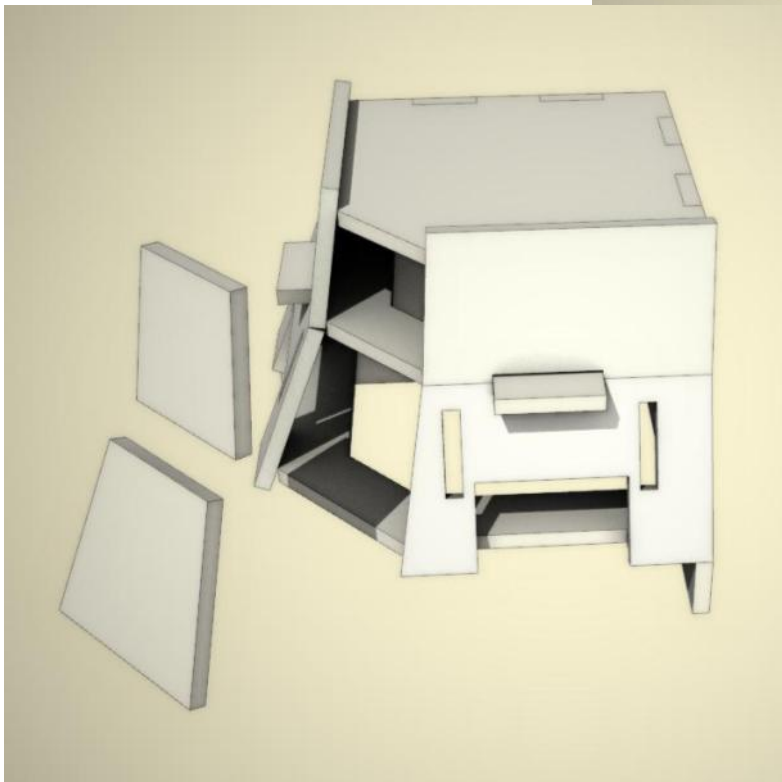
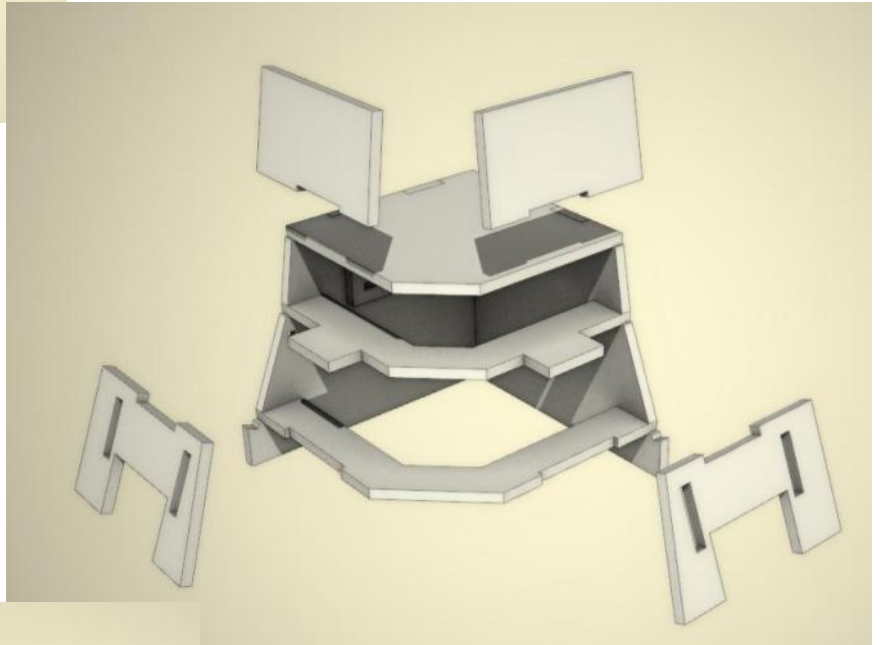
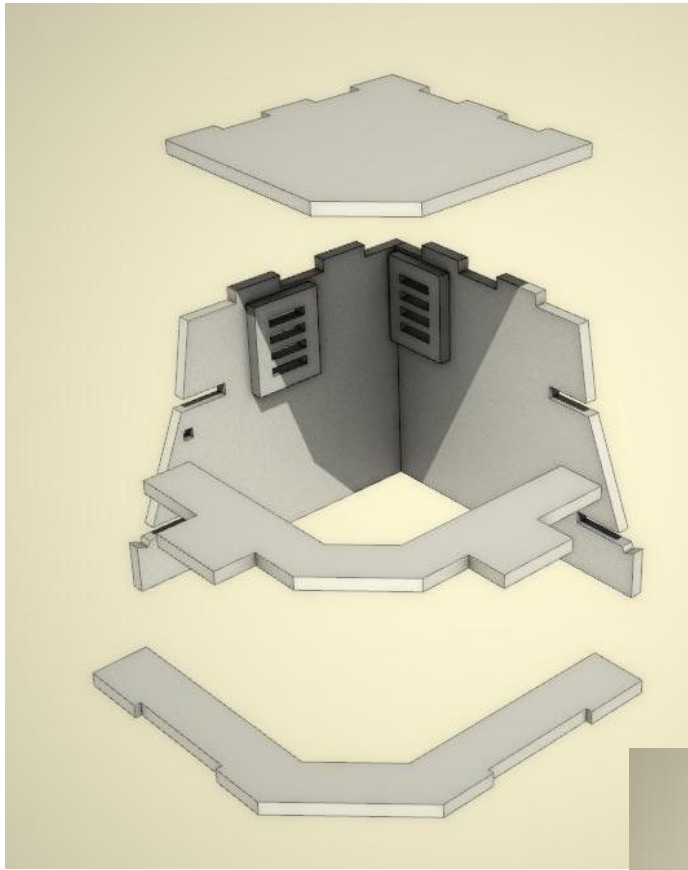


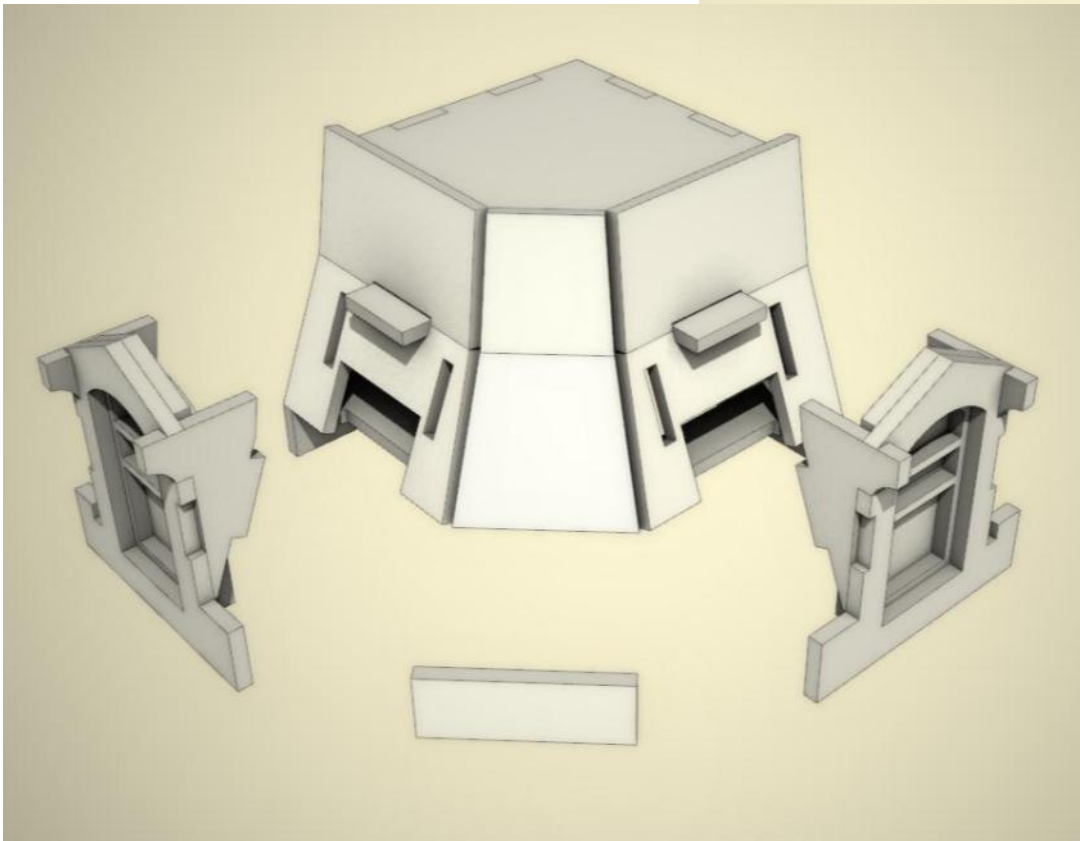
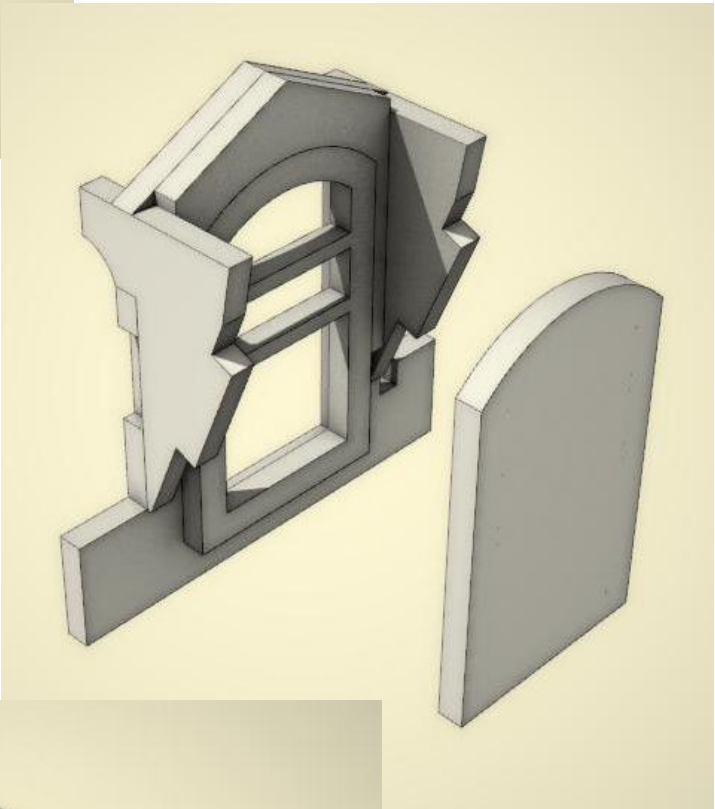
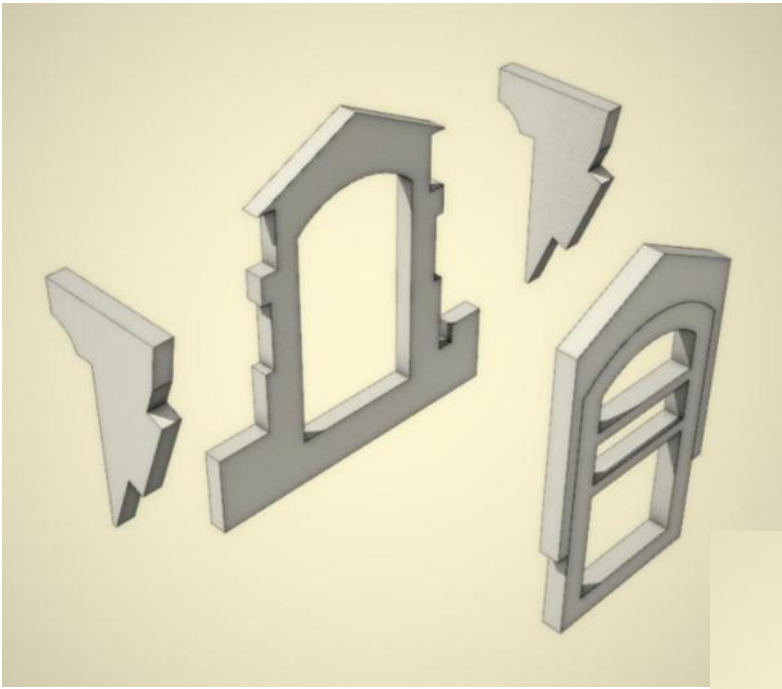


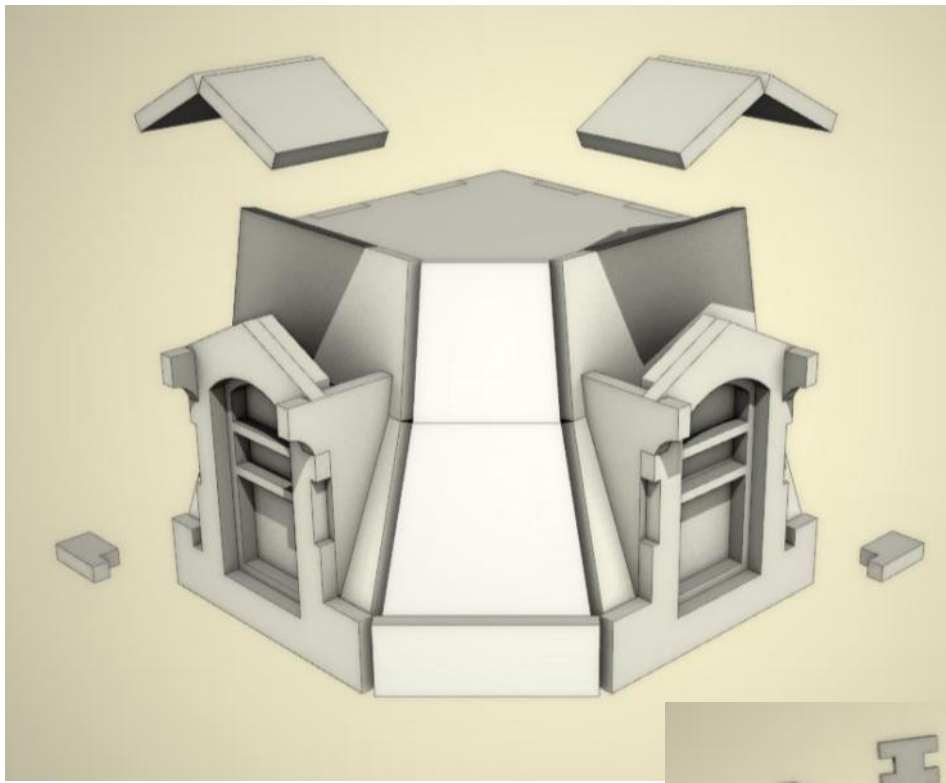
NOTE:
SMALL CUT-
OUTS ON ENDS.











CHIMNEY CAN BE
POSITIONED
ANYWHERE ON THE
ROOF.

