

CNC WORKSHOP

MINIATURE SCENERY

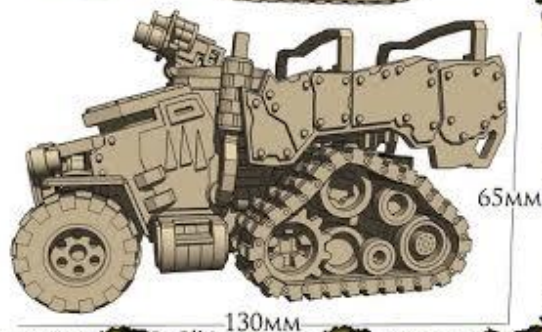
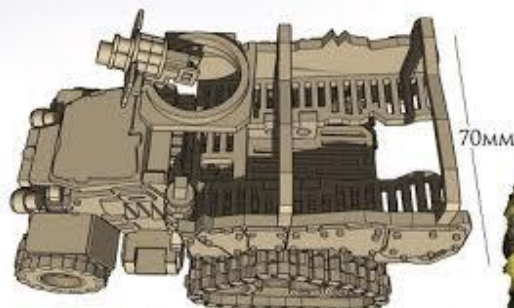
'ARF TRACK



THE 'ARF TRACK FEATURES AN OPEN CARRIAGE FOR TRANSPORTING TROOPS TO WHERE THEY NEED TO BE IN STYLE.

THIS KIT INCLUDES A SHEET OF FINE DETAIL LASERCUT CARD

CNC MINIATURE SCENERY IS DESIGNED FOR 28MM MINIATURES, IDEAL FOR GAMERS AND COLLECTORS



CE FOR DETAILED, EASY TO FOLLOW INSTRUCTIONS VISIT
WWW.MINIATURESCENERY.COM

Contents may contain small parts. Not suitable for children under 6 years old. The exclusive copyright on the model designs and components within this case is the property of CNC Workshop Ltd., 2004. All rights reserved.

MINIATURE SCENERY

INSTRUCTIONS

'Arf Track

Preparation

Once you clear some table space you will need a hobby knife and glue (PVA, wood glue, hobby glue) and a file or small piece of sandpaper to be used for cleaning up any tiny imperfections.

It's a good idea to familiarise yourself with how the pieces fit together before gluing.

Getting Started

I. Parts should remove easily from the board by pressing through and popping them out. It's a good idea to cut through the tiny joins first though, and some parts (particularly smaller, more detailed parts) may need more careful persuasion.

II. Use a file or sand paper last to completely remove the tabs that might remain.

III. Parts may be a very tight fit, slight trimming or sanding of parts may be needed for ease of assembly.

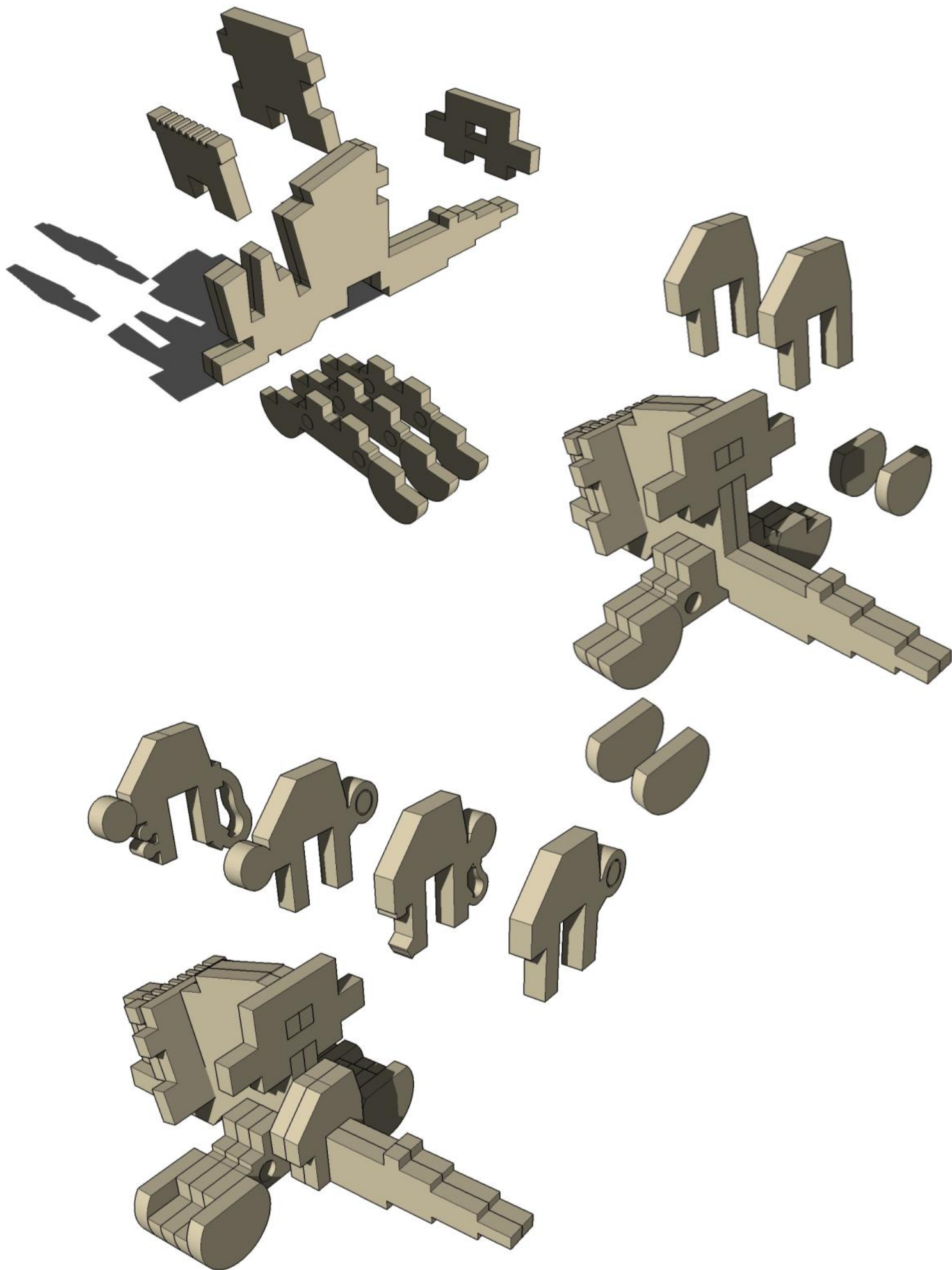
Construction

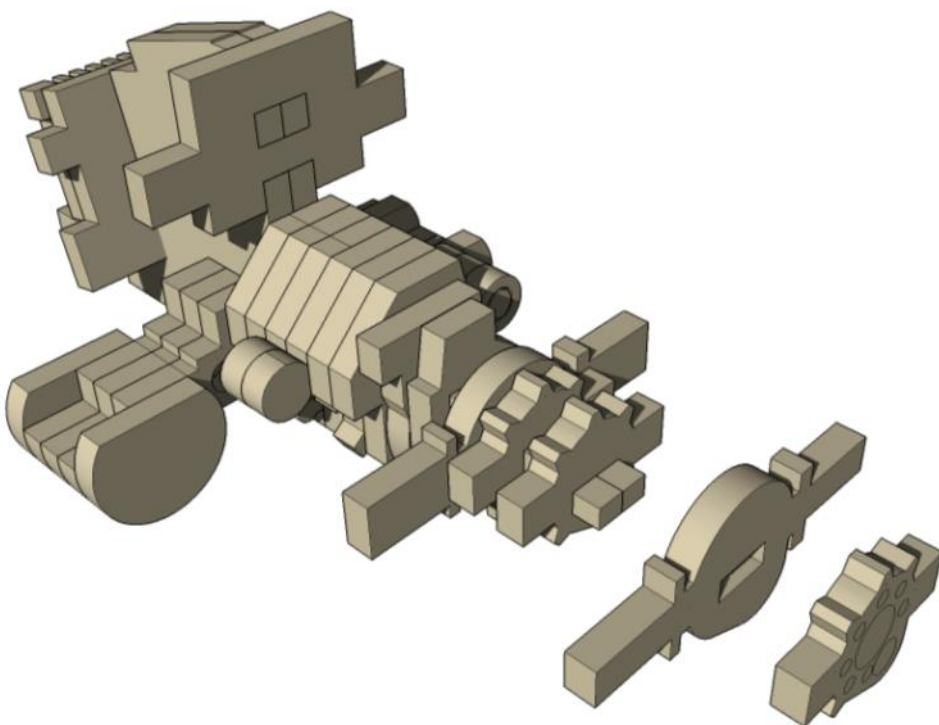
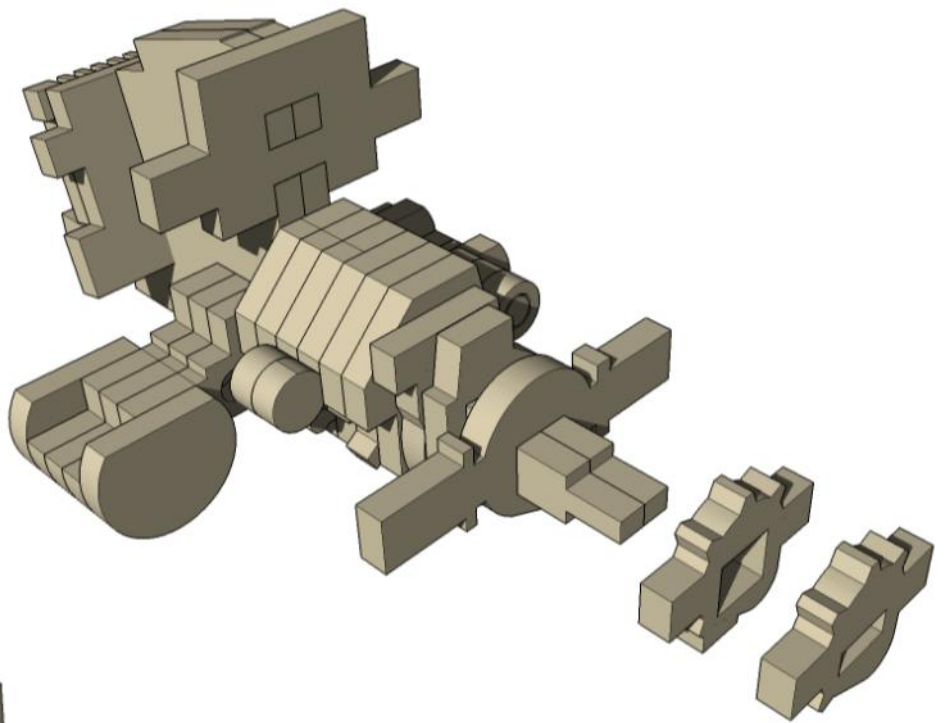
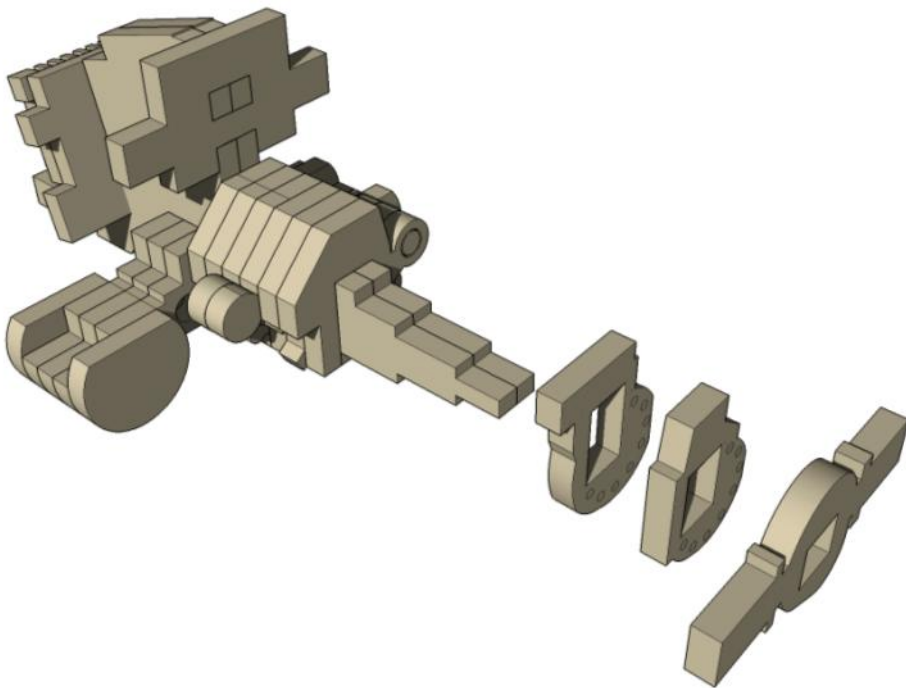
Slot the parts together as shown by the pictures below, applying glue wherever there is a connection.

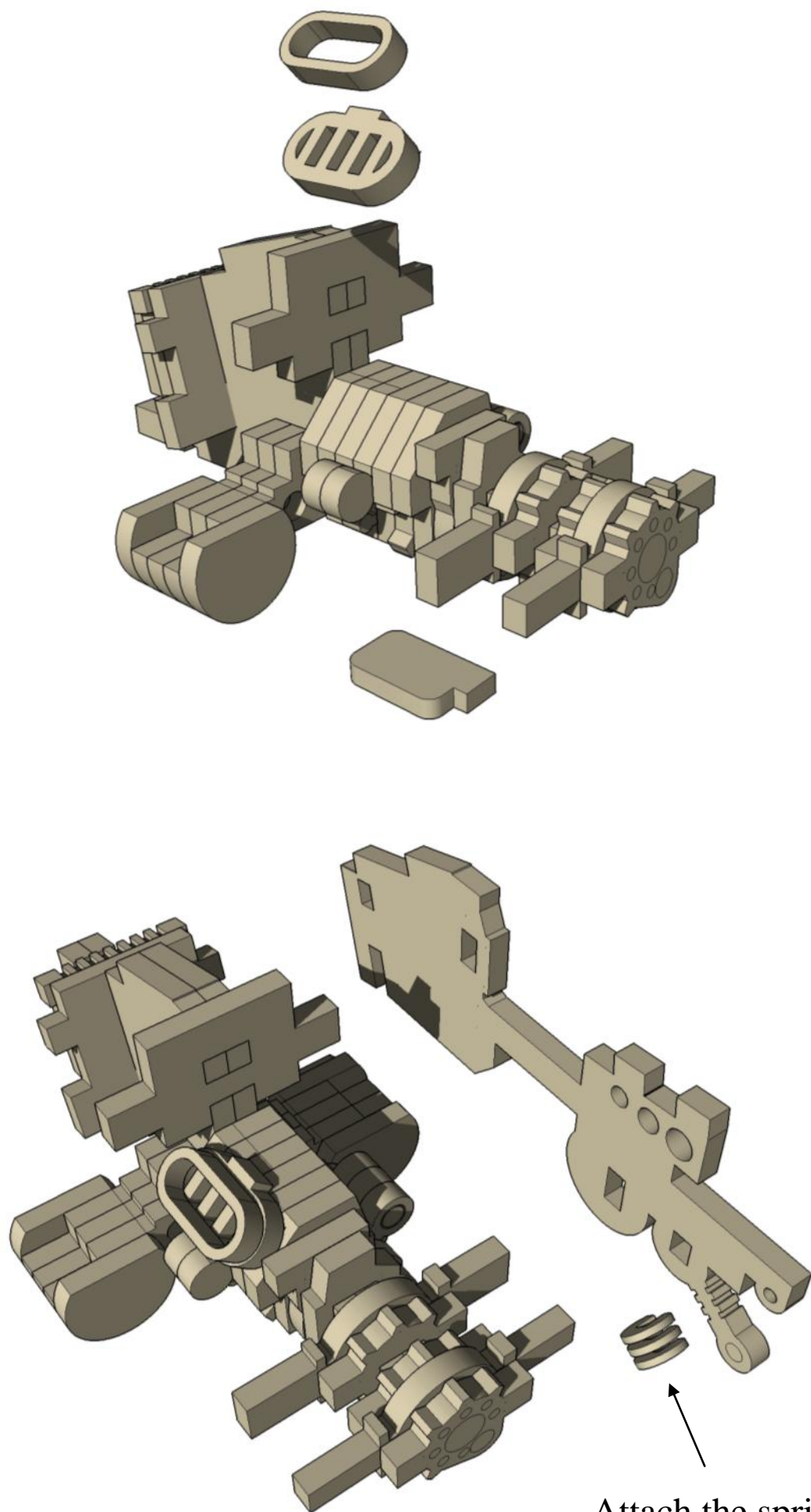
Allow the model to completely dry before painting it. This is a complex kit with many small parts. Allowing each section to dry thoroughly before heading to the next is strongly recommended.

Some parts of this kit are very fine, or have engraving very close to edges. Make sure you cut through any tabs carefully with a hobby knife first to avoid damage.

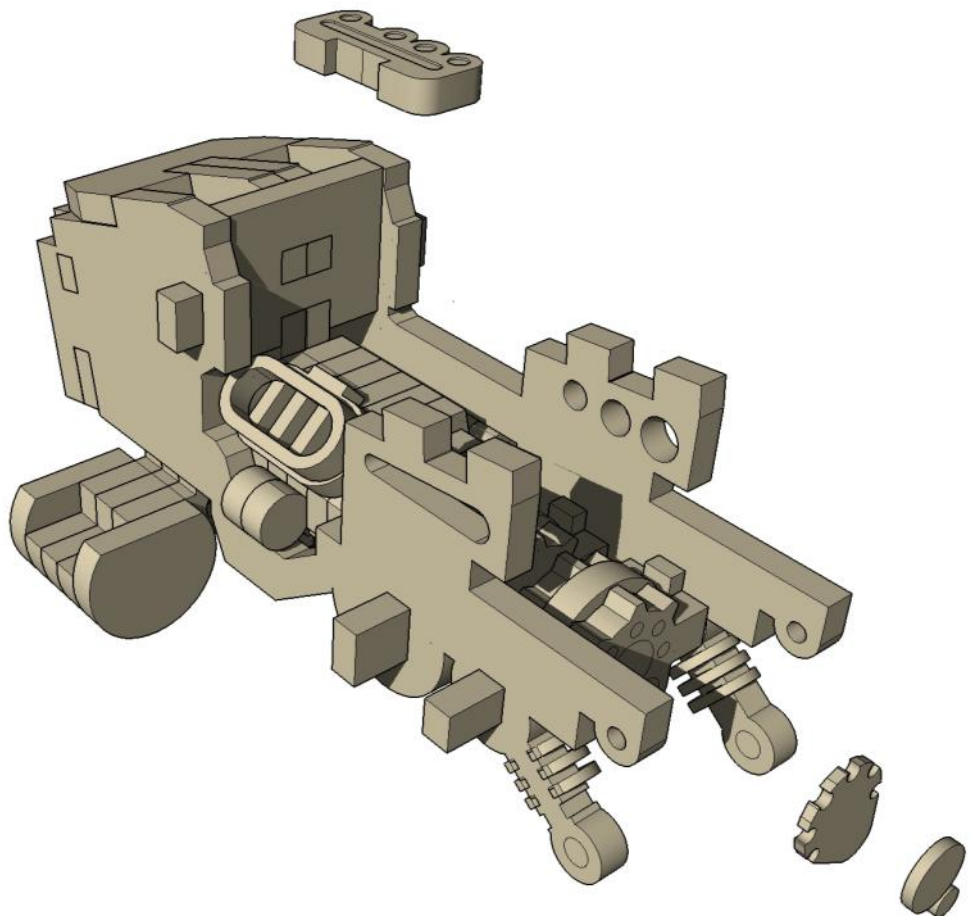
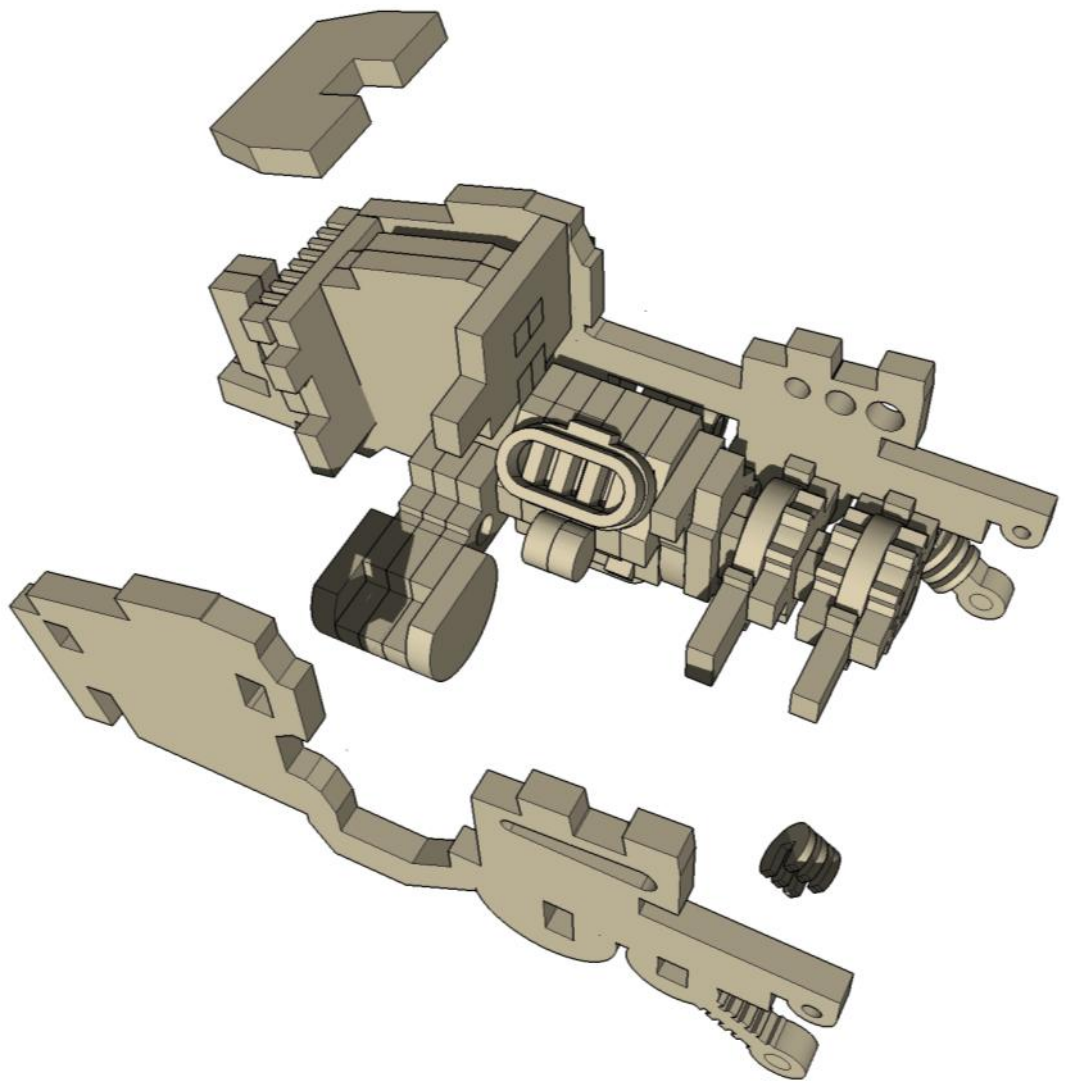


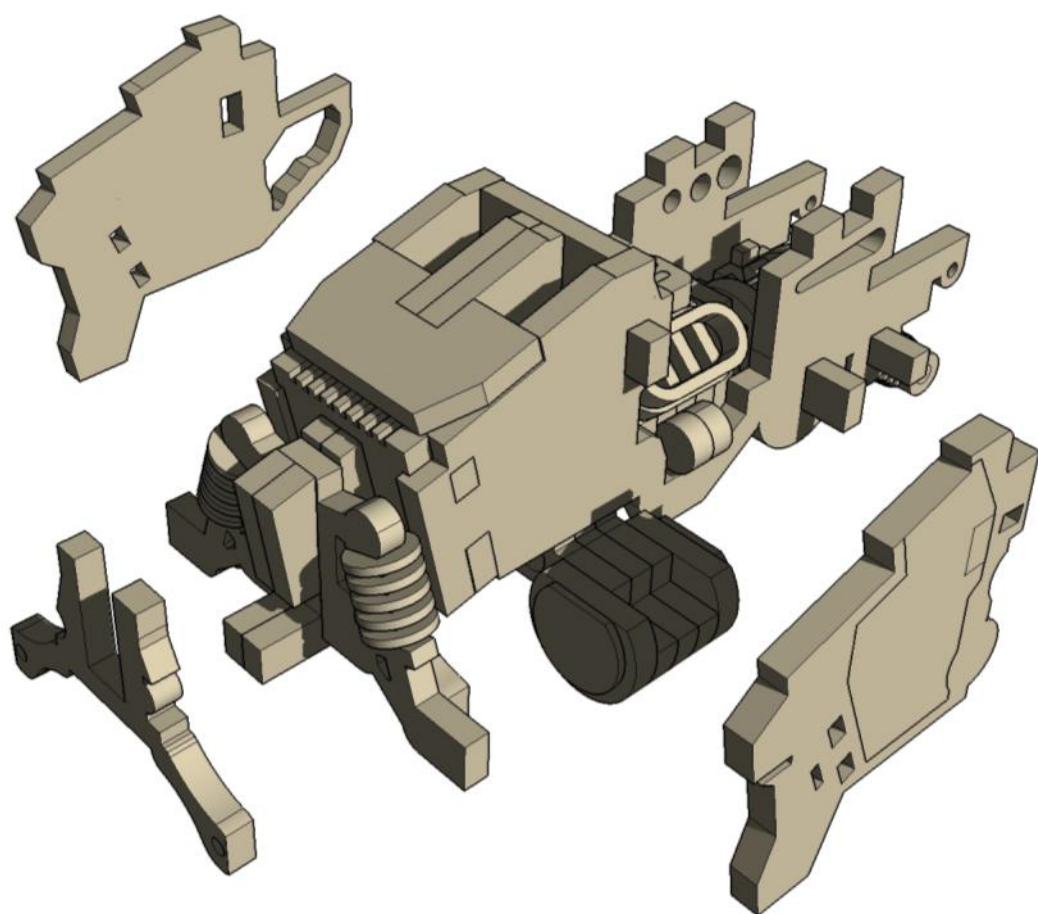
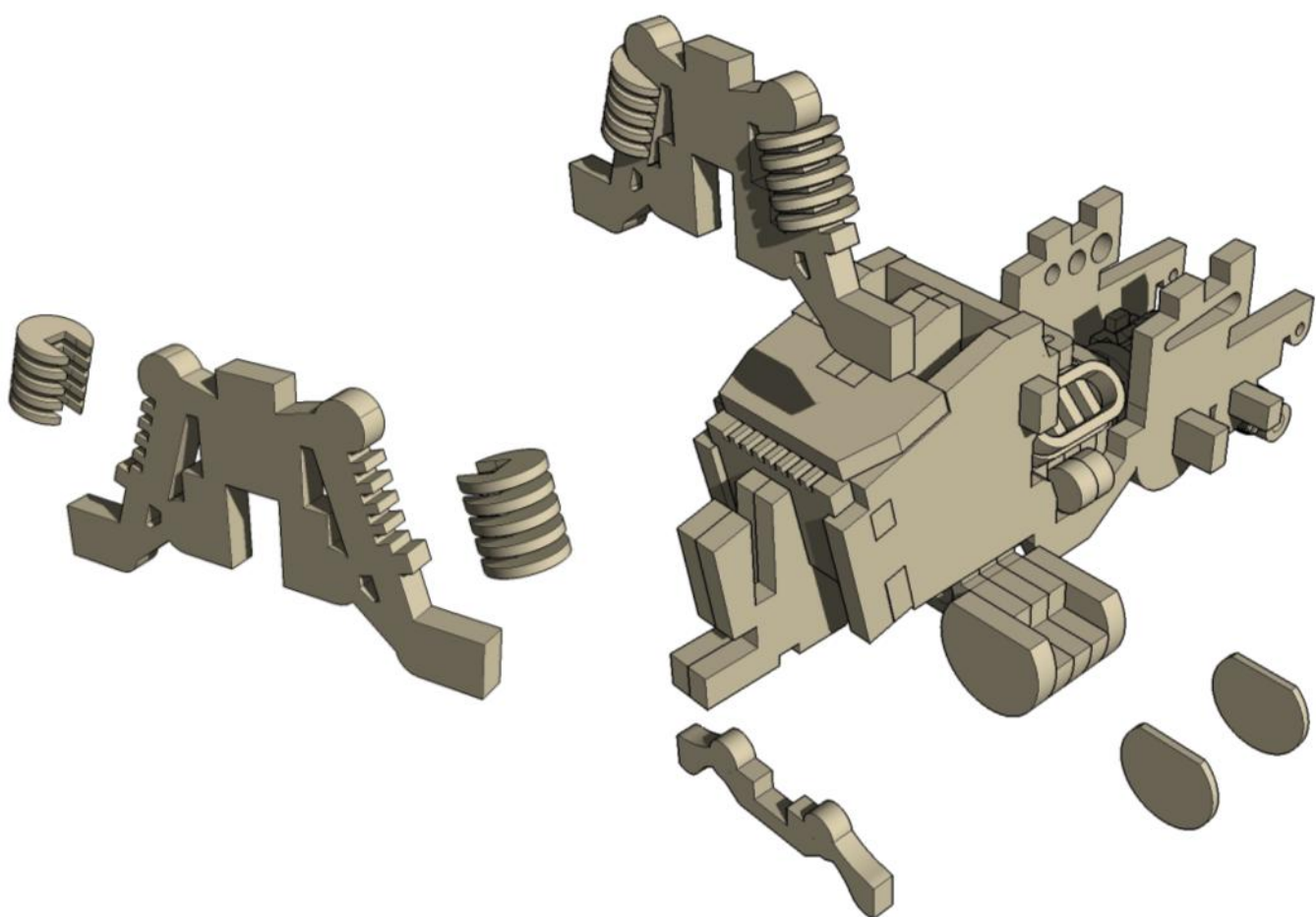


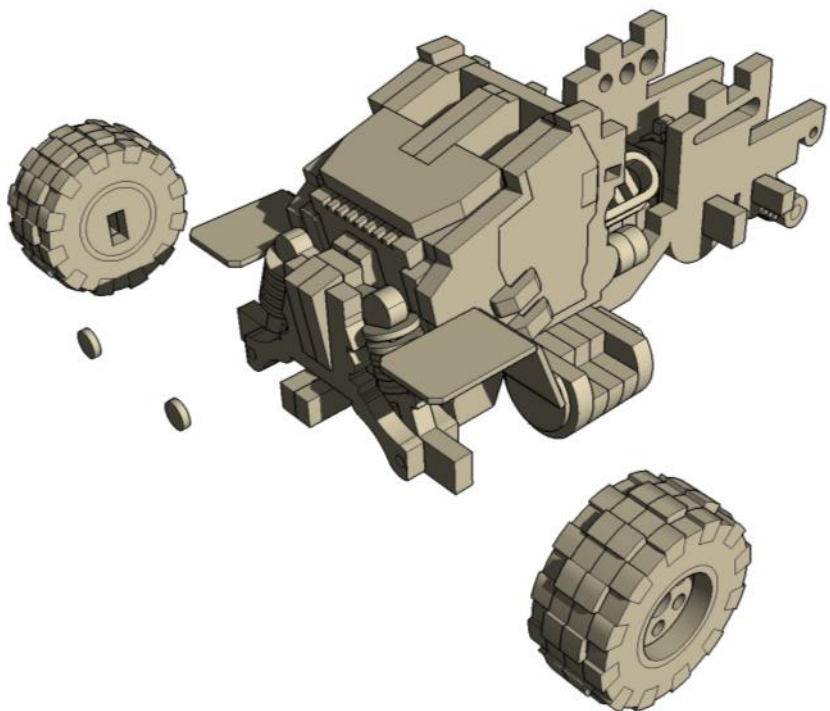
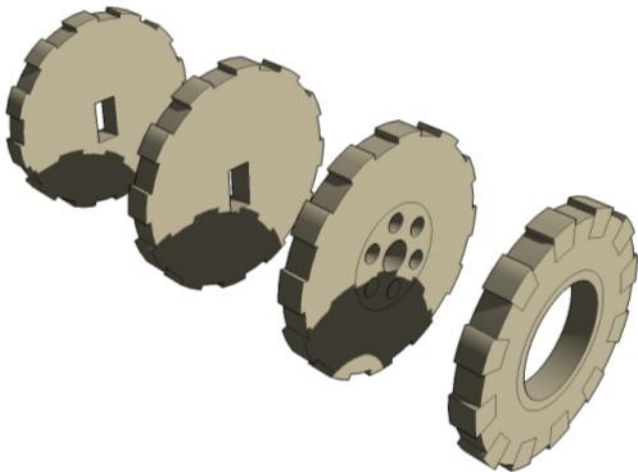
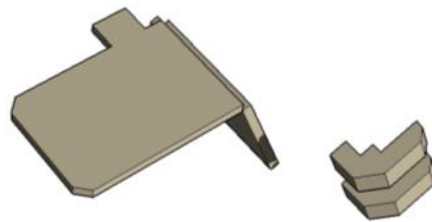
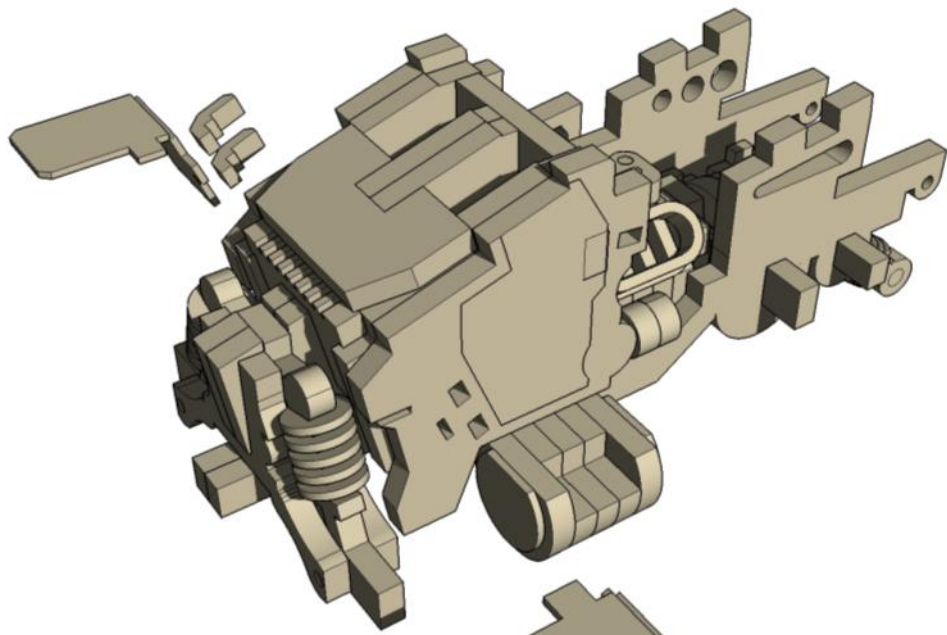


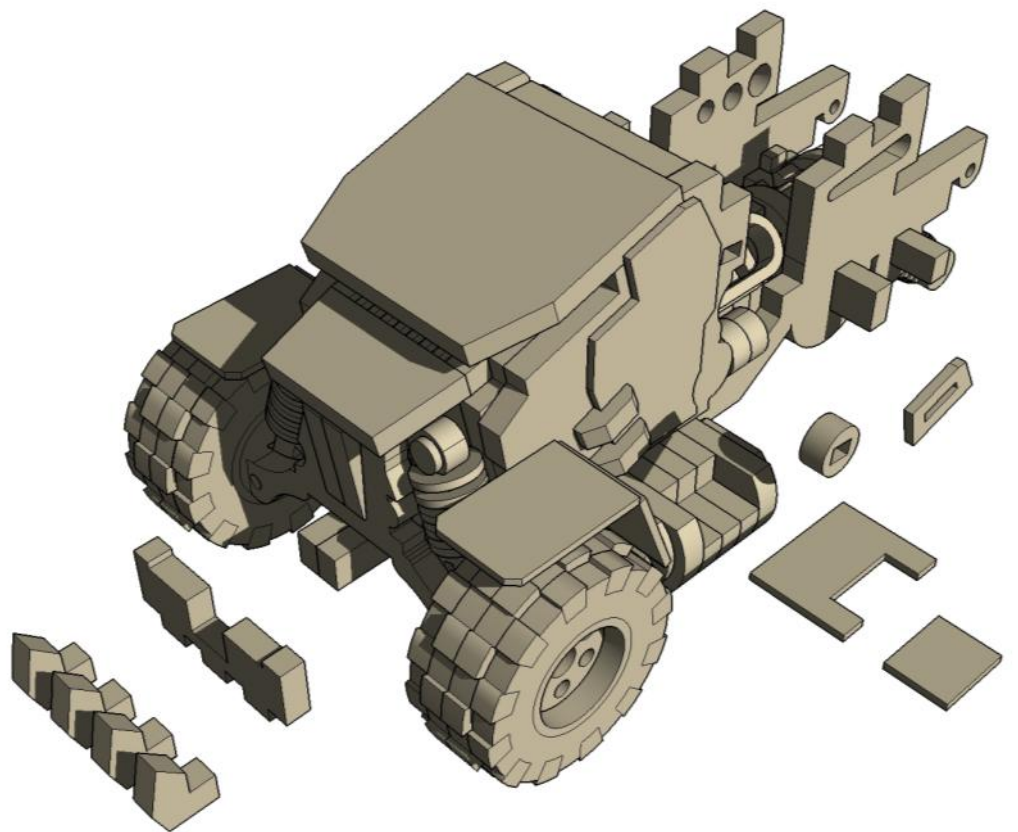
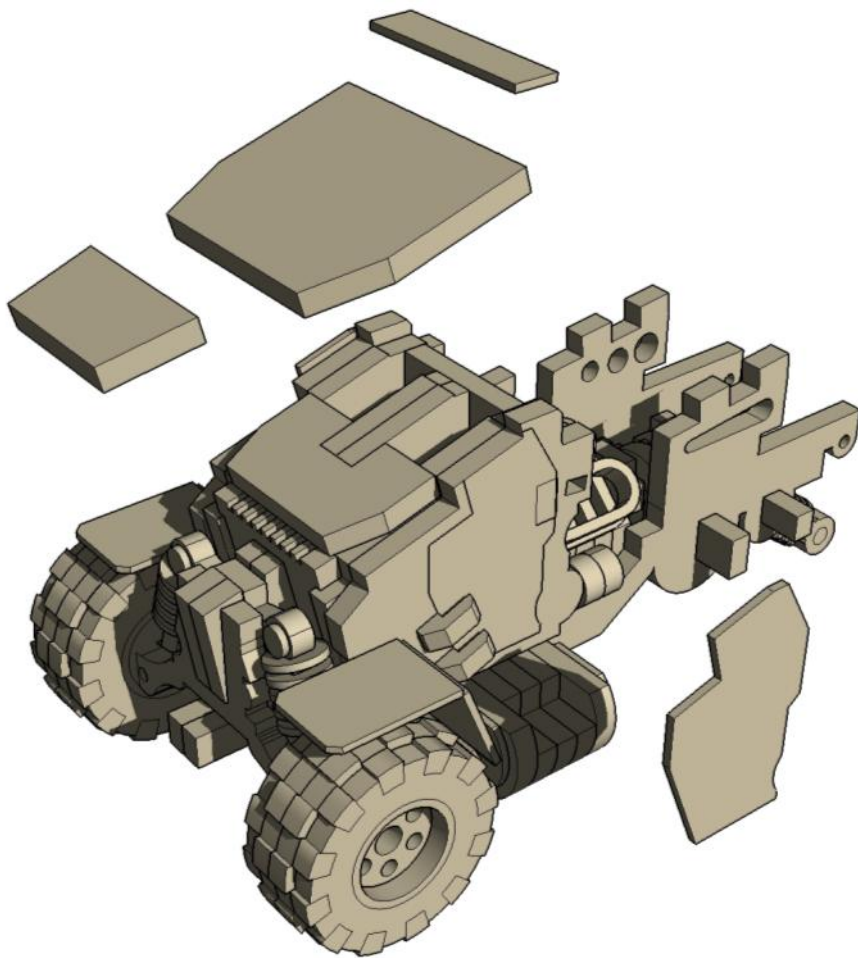


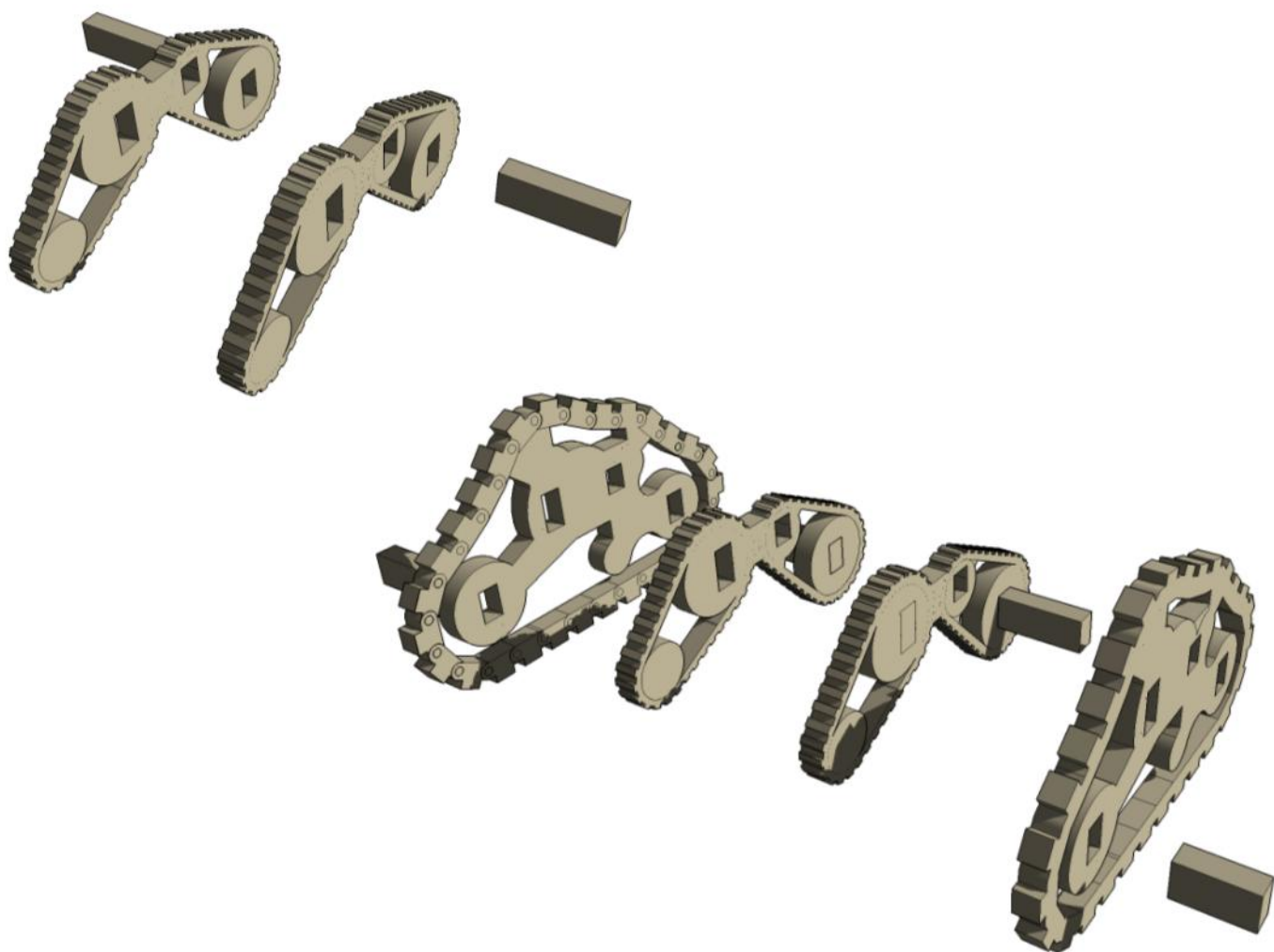
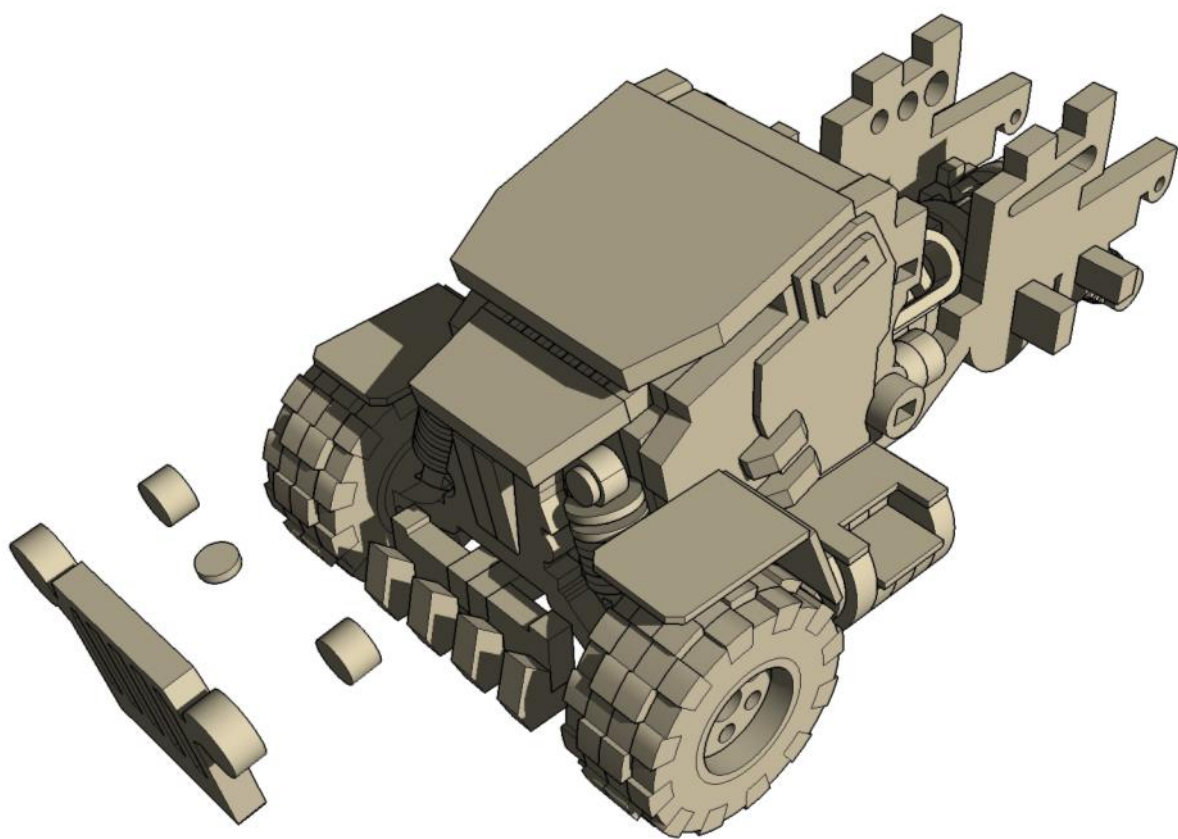
Attach the springs
BEFORE attaching
the sides.

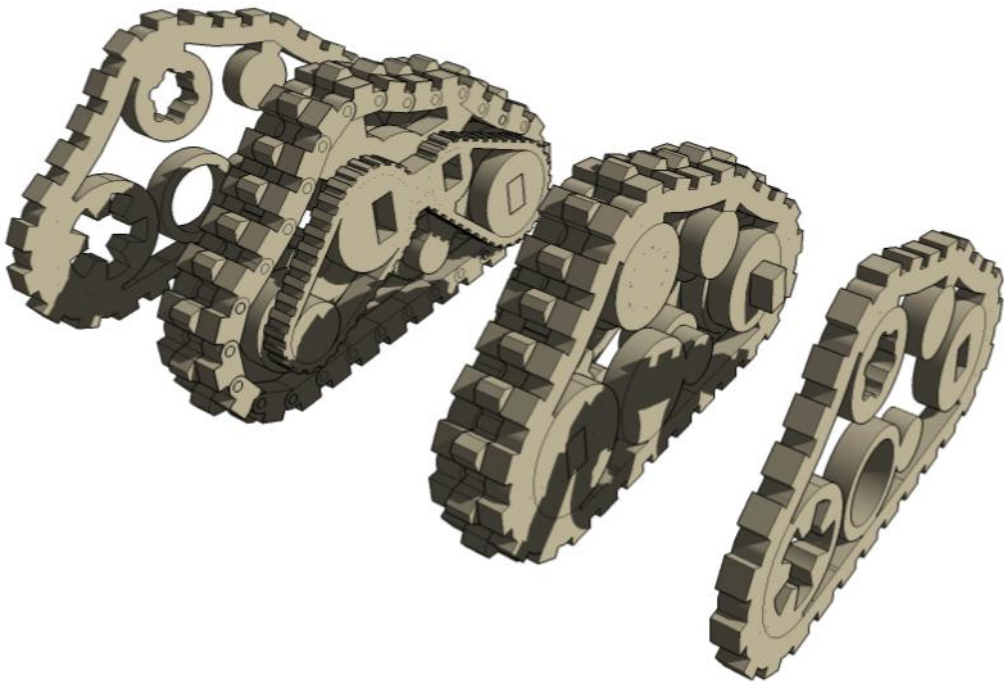
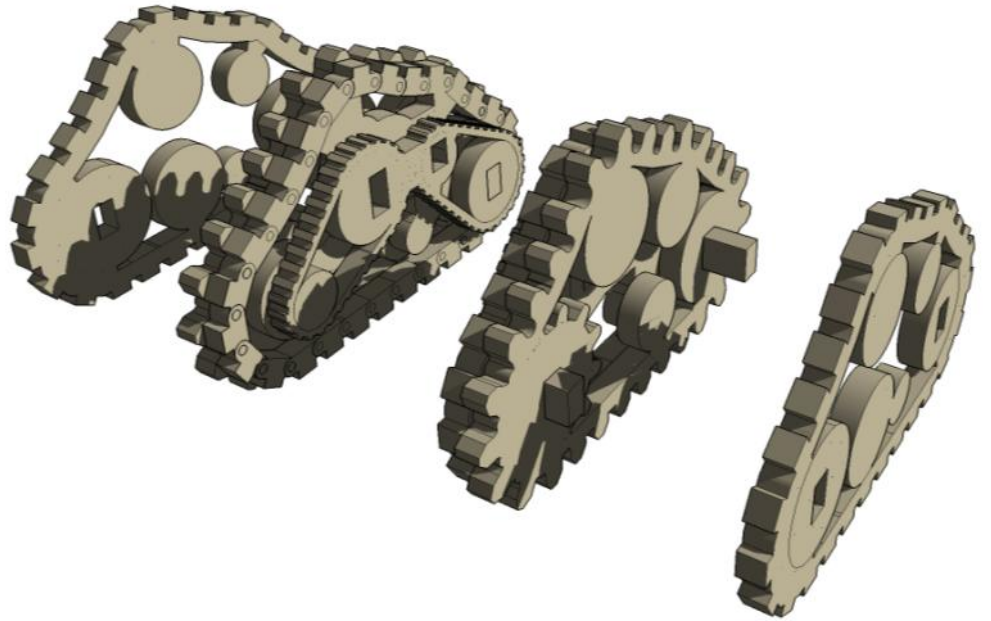
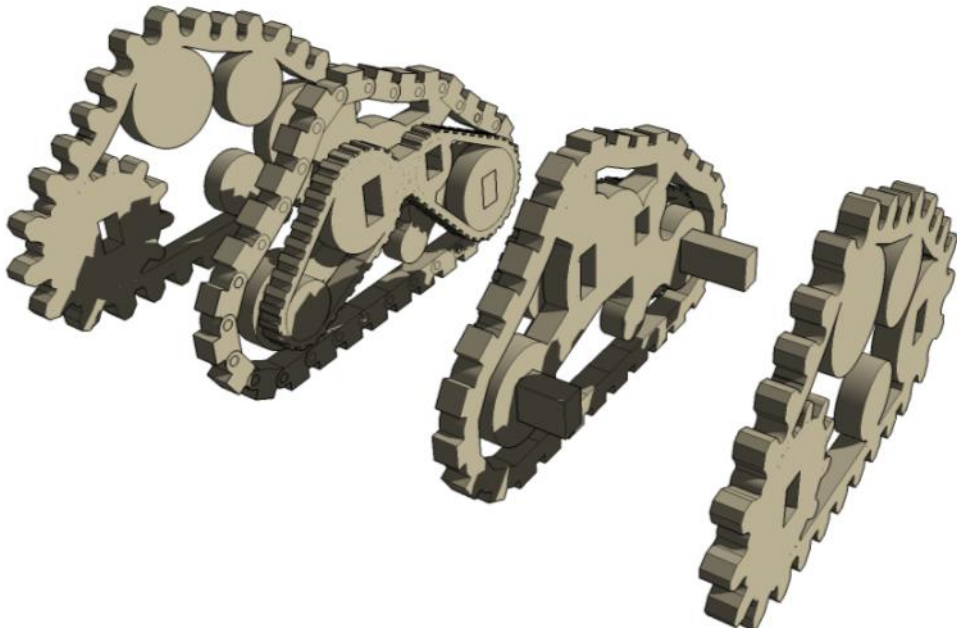


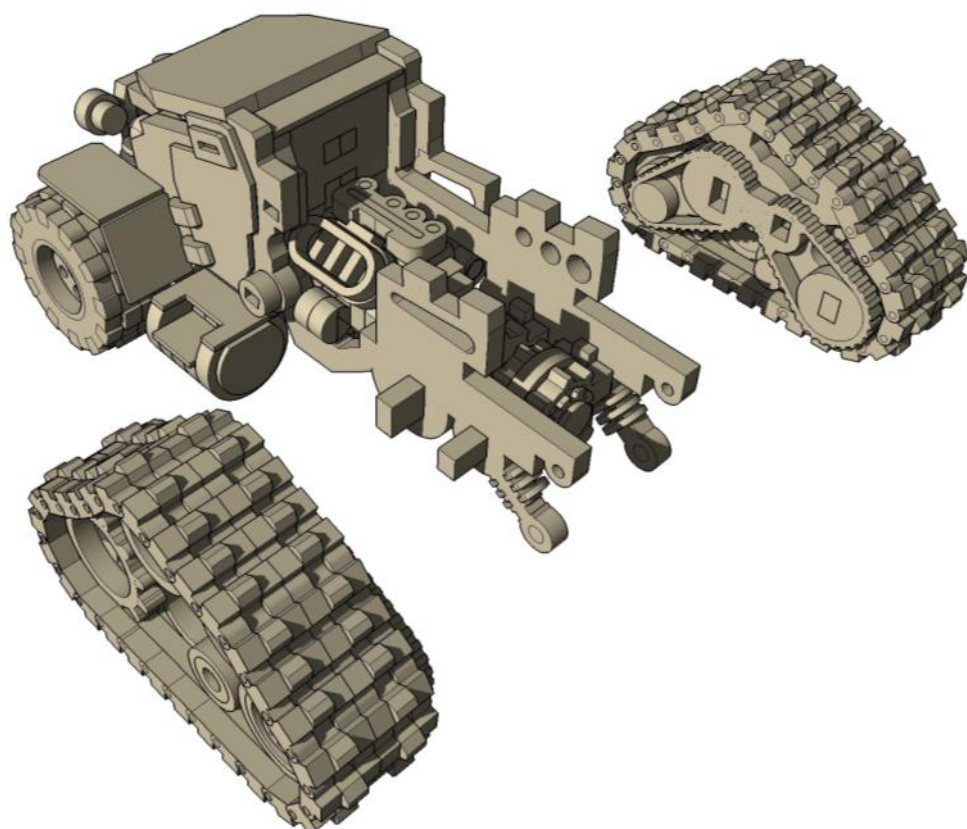
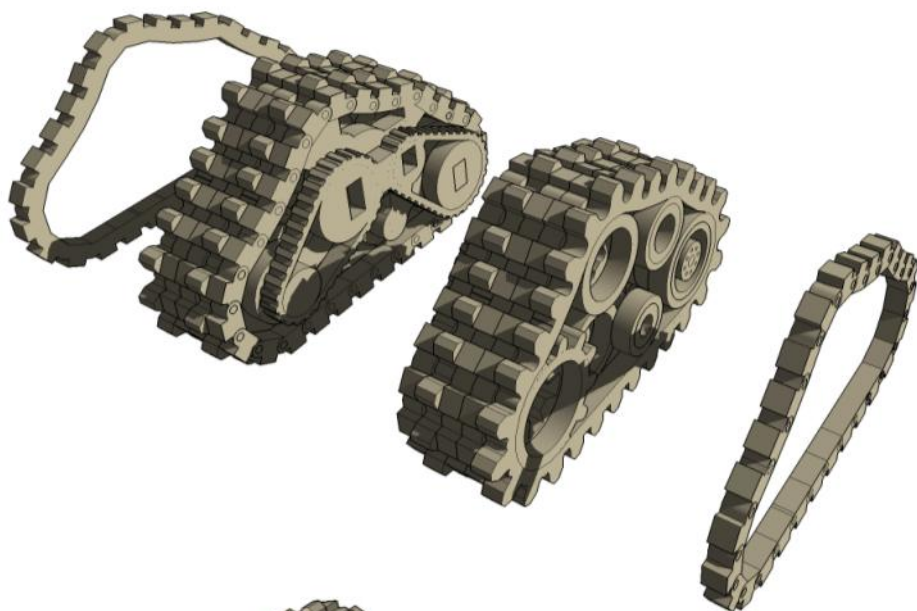
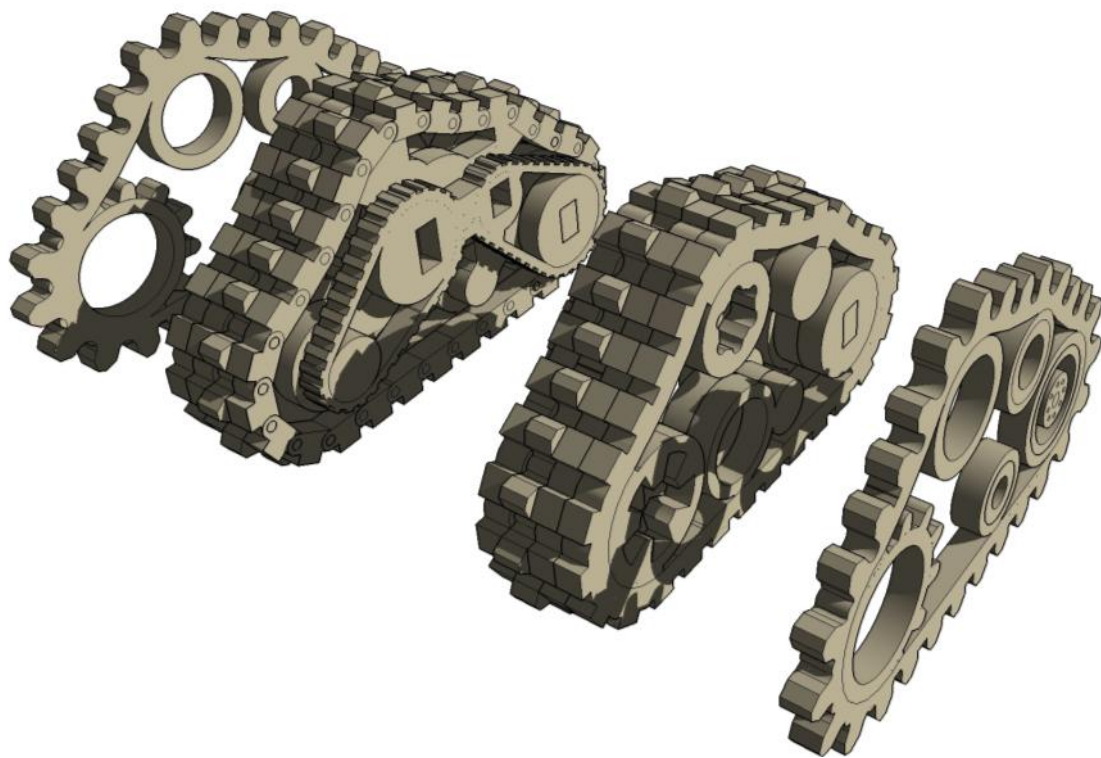


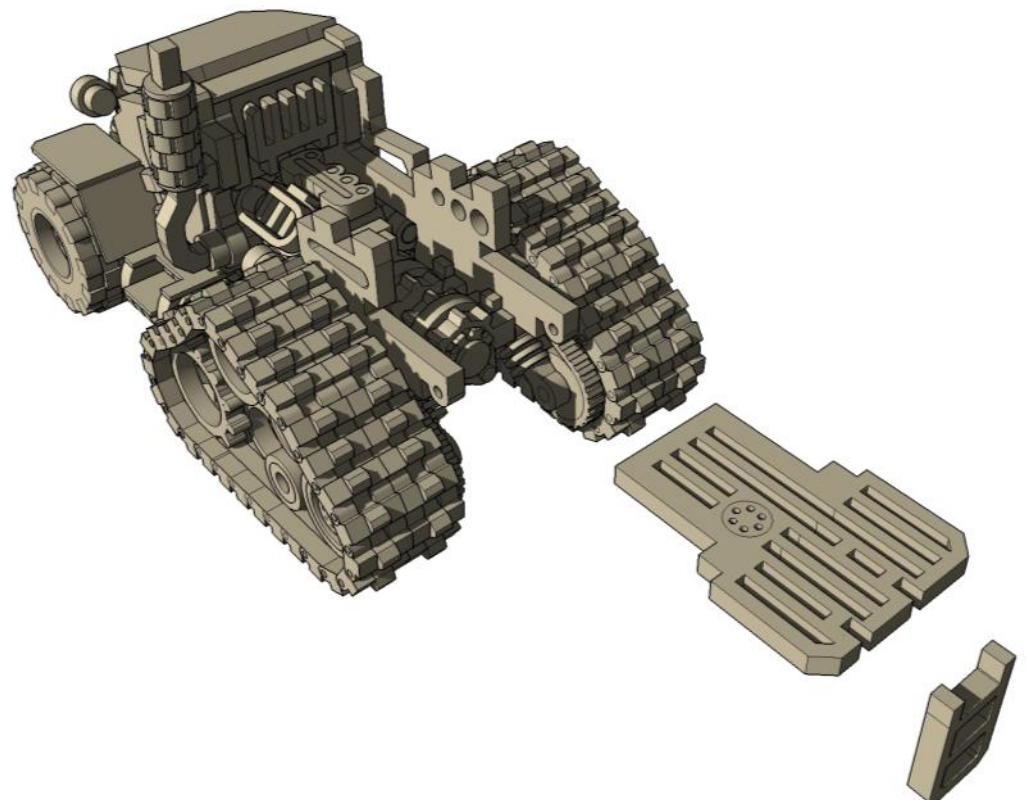
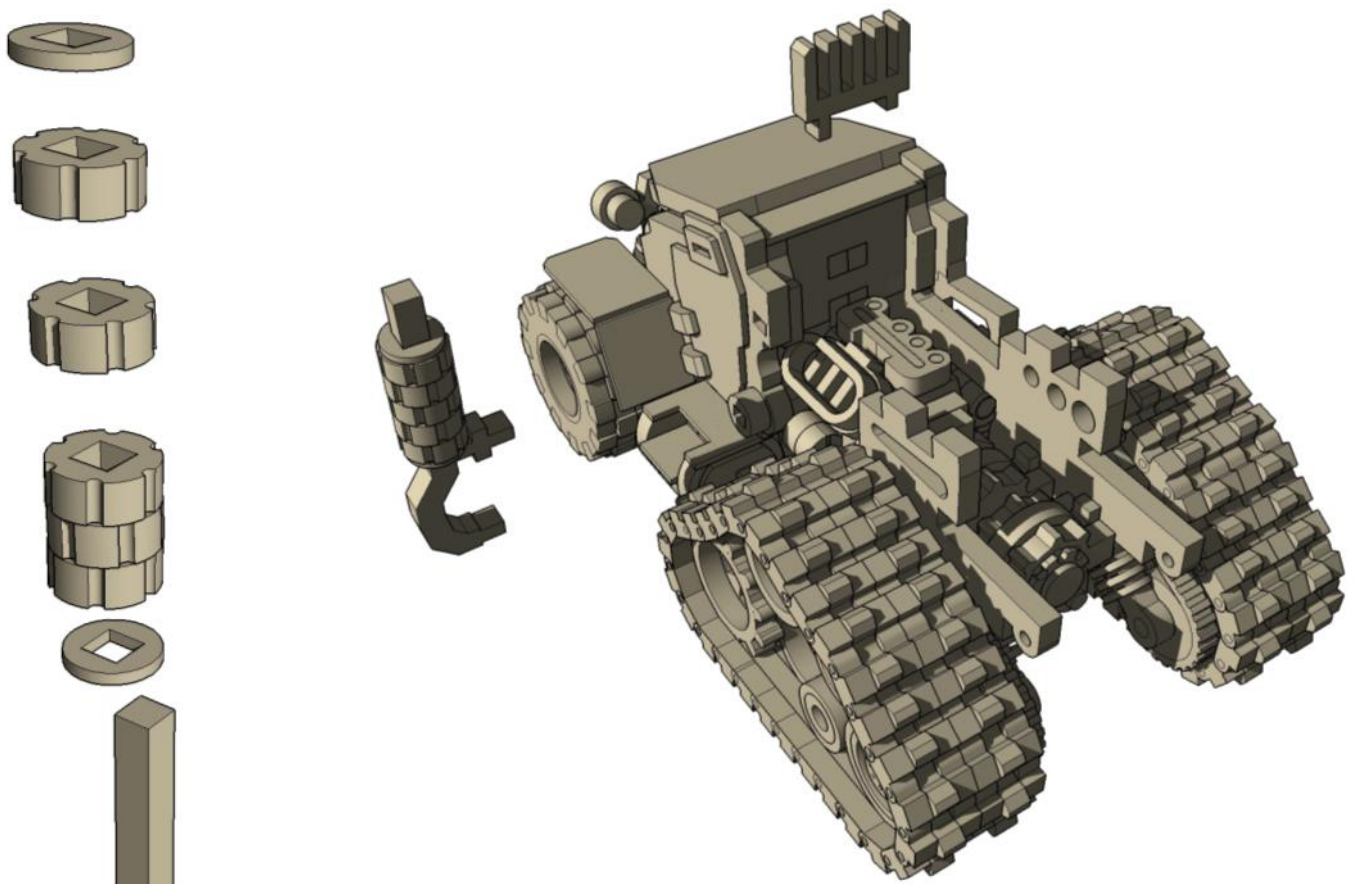


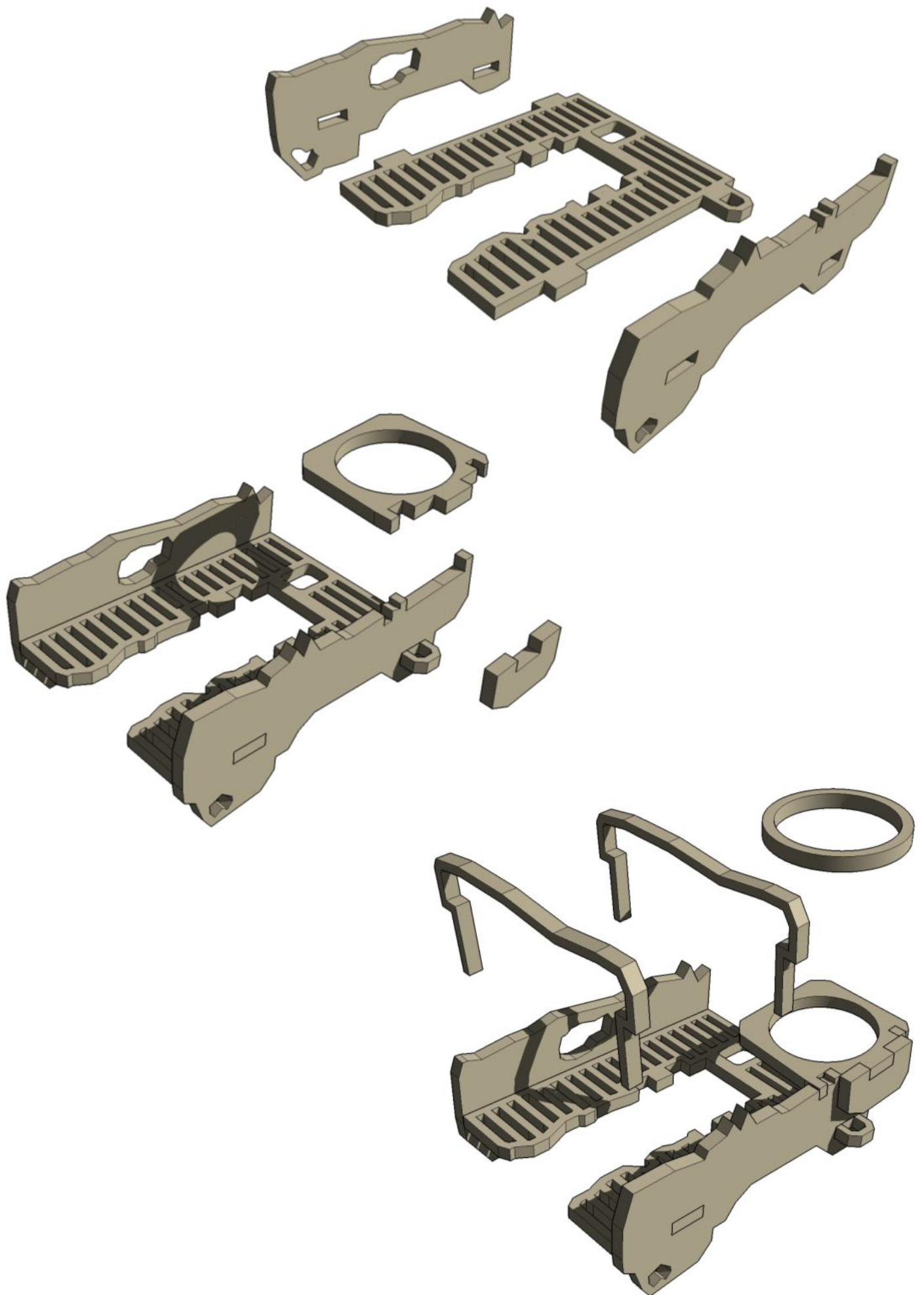


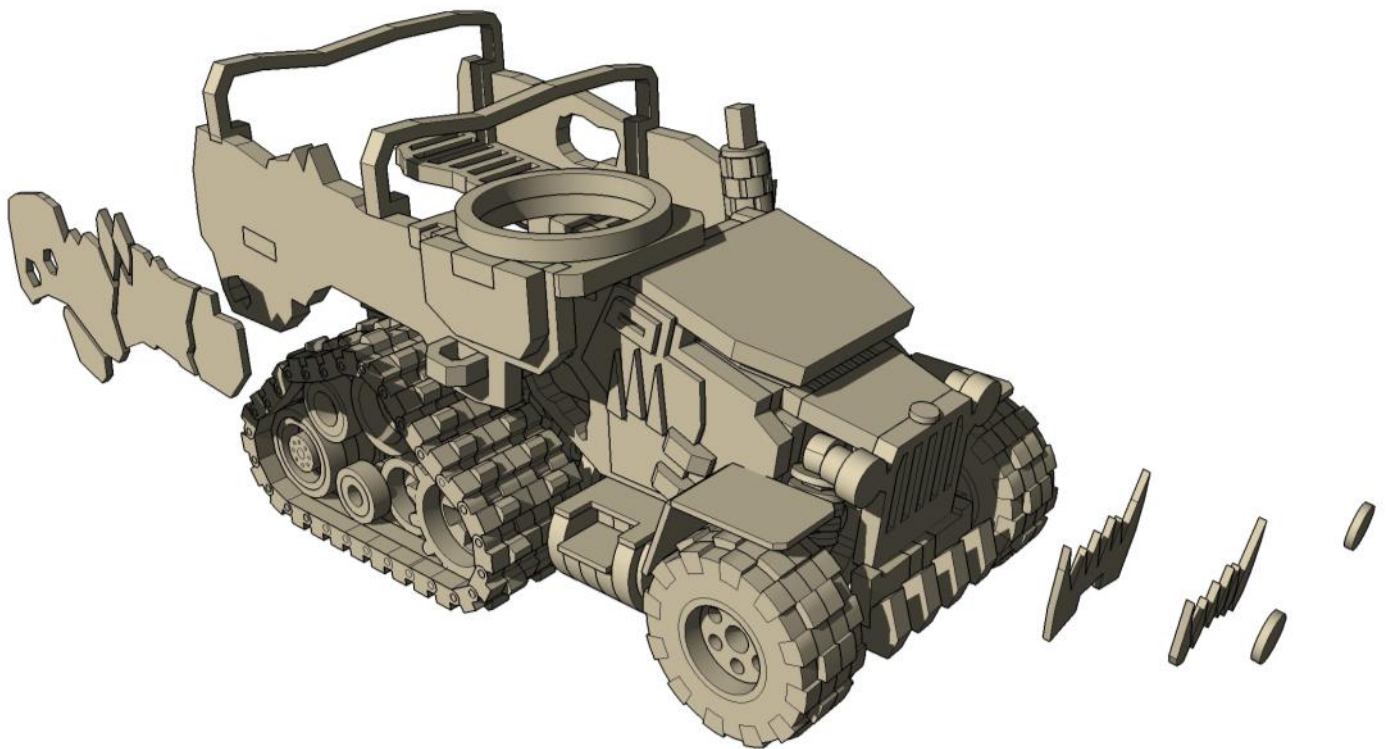
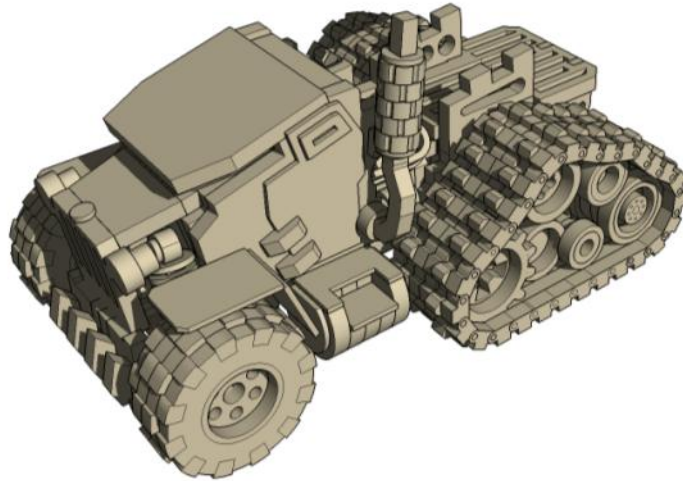
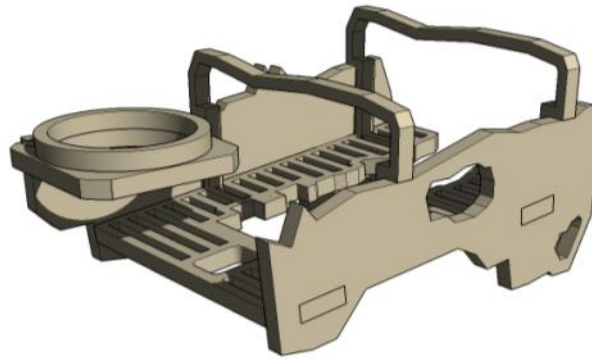


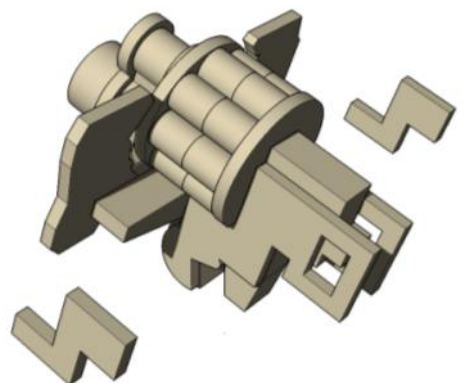
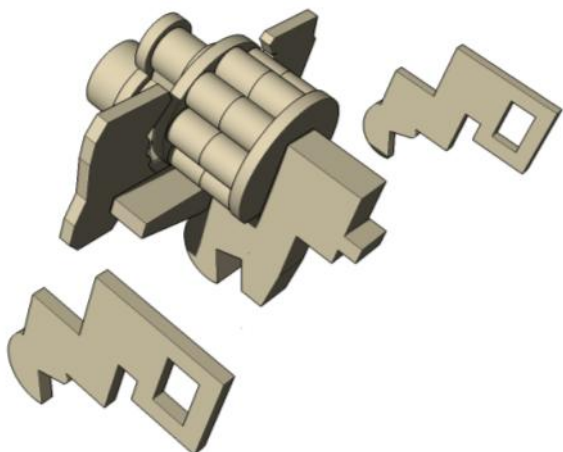
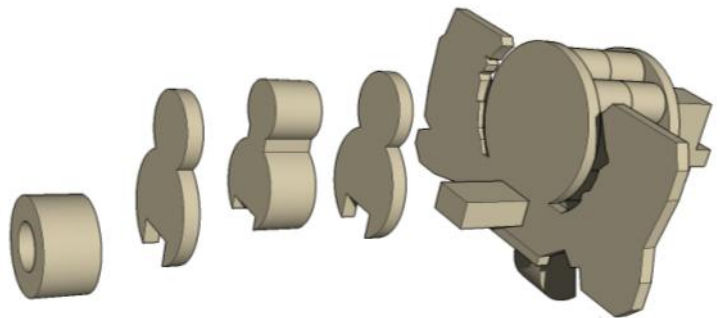
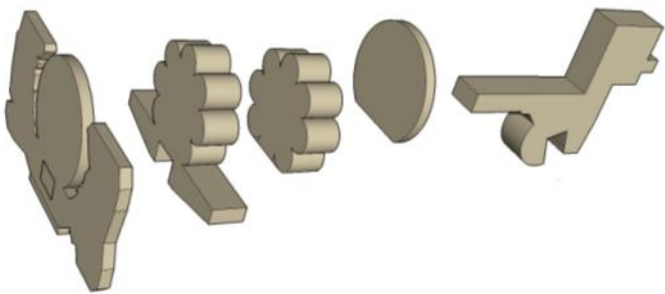
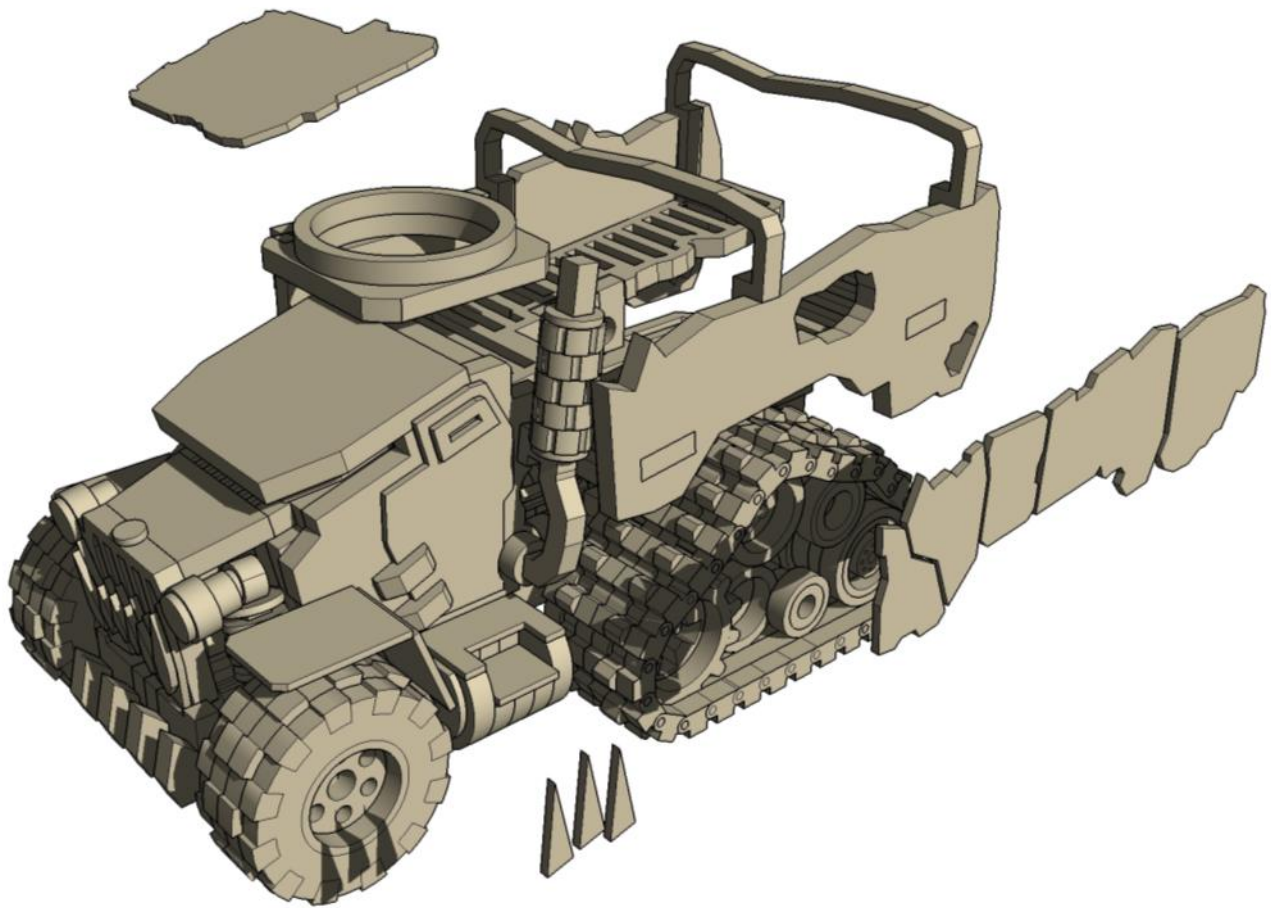


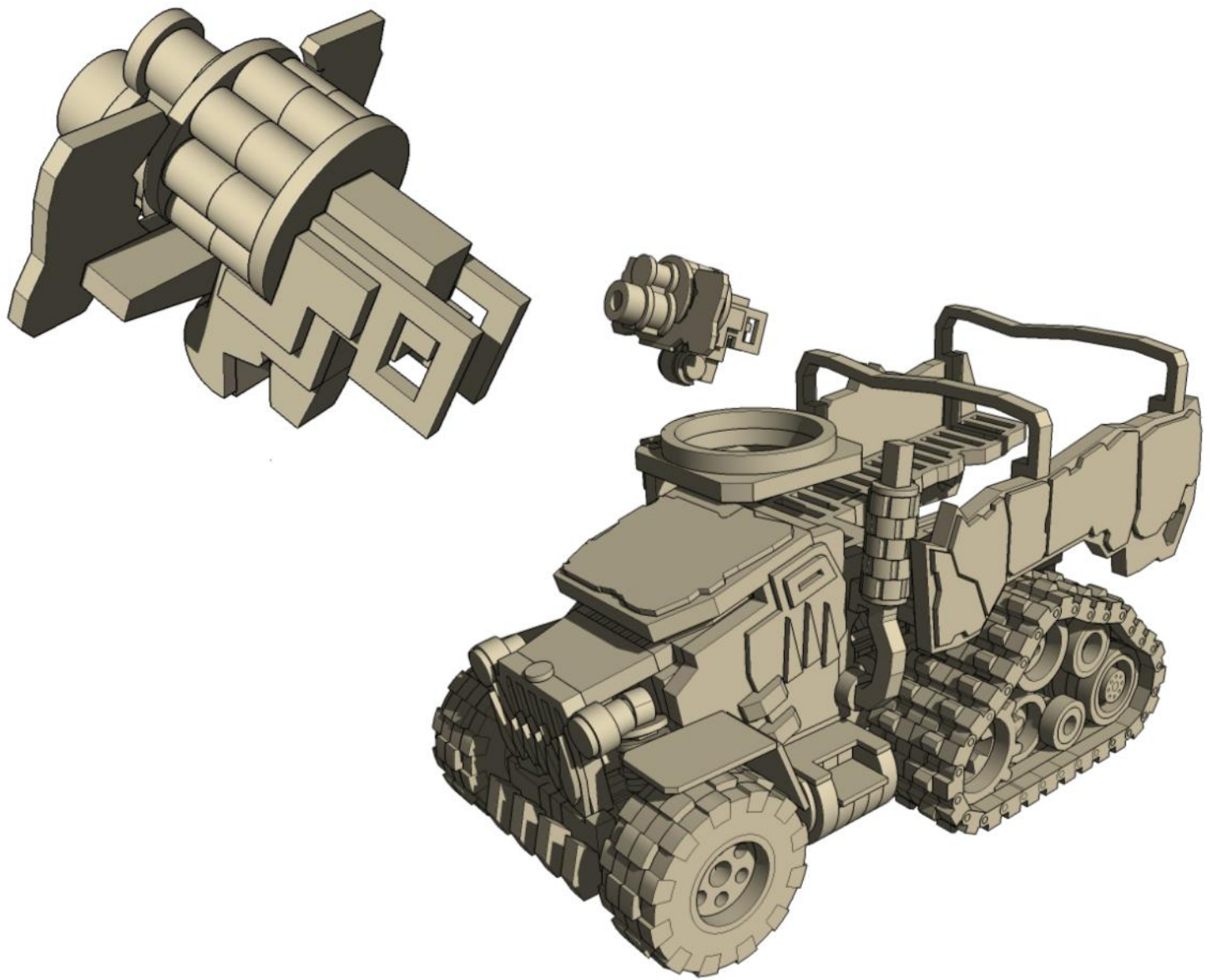












You will find your kit contains numerous spare card parts, including many that are very tiny, such as bolt heads and the like. These can be used to decorate your model how ever you'd like. Here is the suggested method for making the most of these pieces.

Trim the parts from the sheet very carefully.

To handle the parts, use a BRAND NEW exacto type blade or similar to gently spear the part and glue into position with PVA white glue.

After the glue has set, put a tiny drop of **super thin** super glue over the part and let it soak in and dry. This will harden the part quite considerably and stop it de-laminating.

Your model can now painted using regular model paints.



