

# MINIATURE SCENERY

## INSTRUCTIONS BEBORK

### PREPARATION

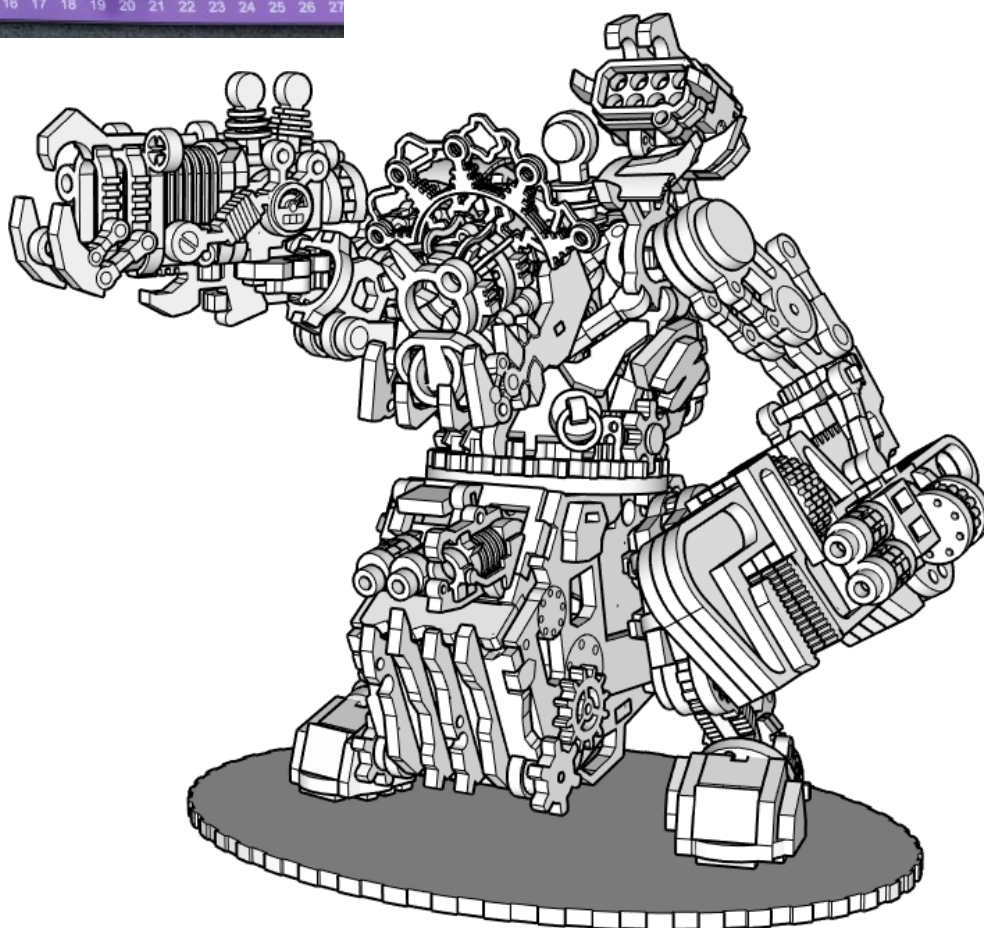
You will need:

- Cutting mat or something to protect your table.
- PVA/Wood glue or superglue if you prefer.
- Small file or sand paper.
- Small blade / hobby knife



### GENERAL PROCESS

- Clear plenty of table space, you will need it.
- Parts should remove easily from the board by pressing through and popping them out. It's a good idea to cut through the tiny joins first though, and some parts (particularly smaller, more detailed parts) may need more careful persuasion.
- Use file or sand paper to remove the small bur caused by the connection to the frame.
- It's a good idea to familiarise yourself with how the pieces fit together before gluing.
- Slot the parts together as shown by the pictures below, applying glue wherever there is a connection. (unless shown otherwise)
- Parts may be a very tight fit, slight trimming or sanding of parts may be needed for ease of assembly.



## 3D printed parts notes

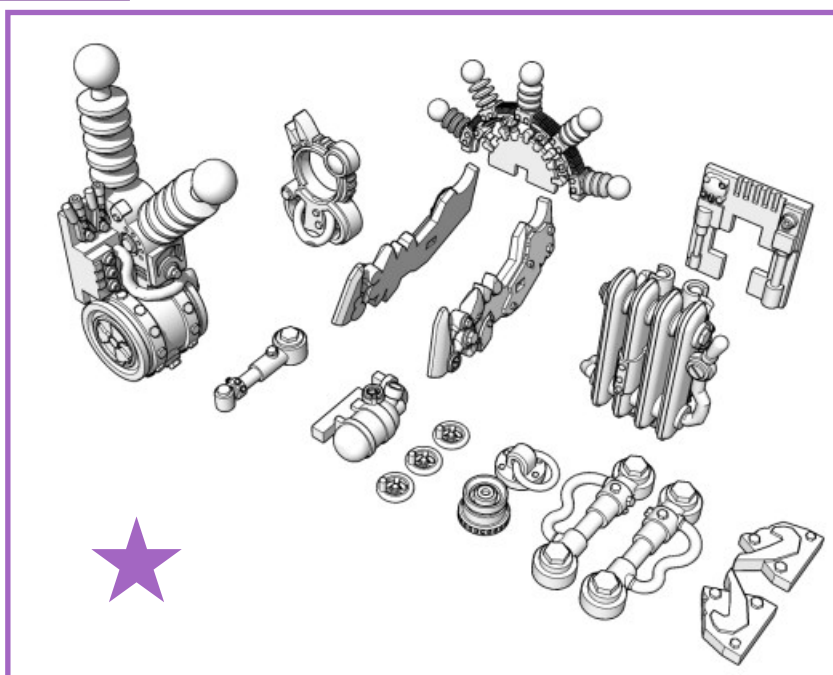
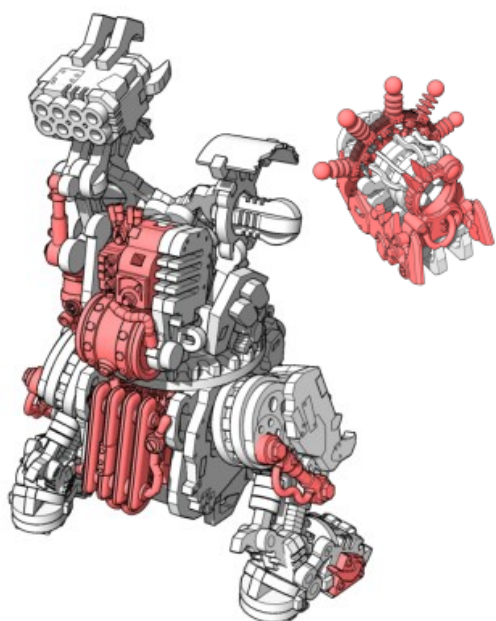
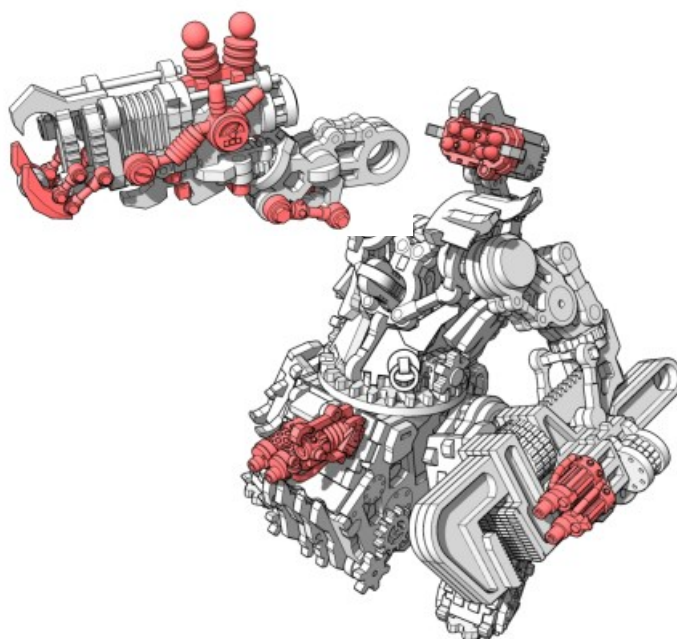
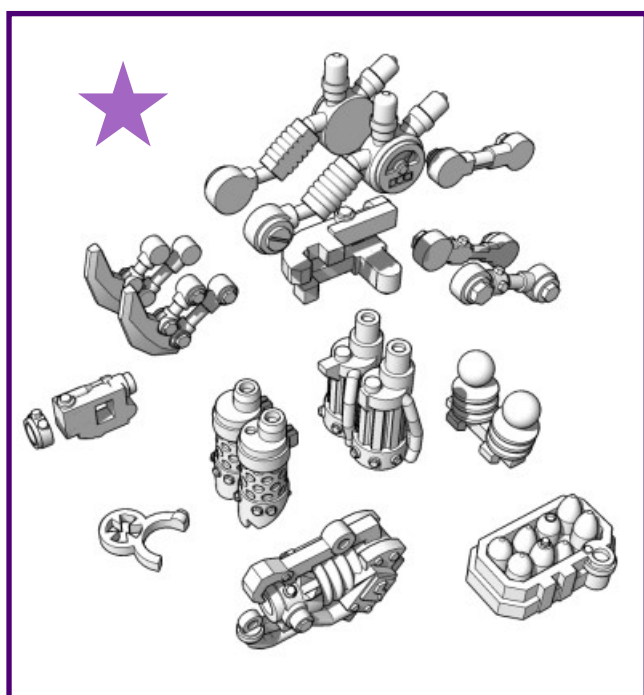
This kit has optional parts that can be 3d printed. The file for these parts can be purchased from [www.miniaturescenery.com](http://www.miniaturescenery.com)

These optional parts are designed to fit with the MDF kit at certain points in construction.

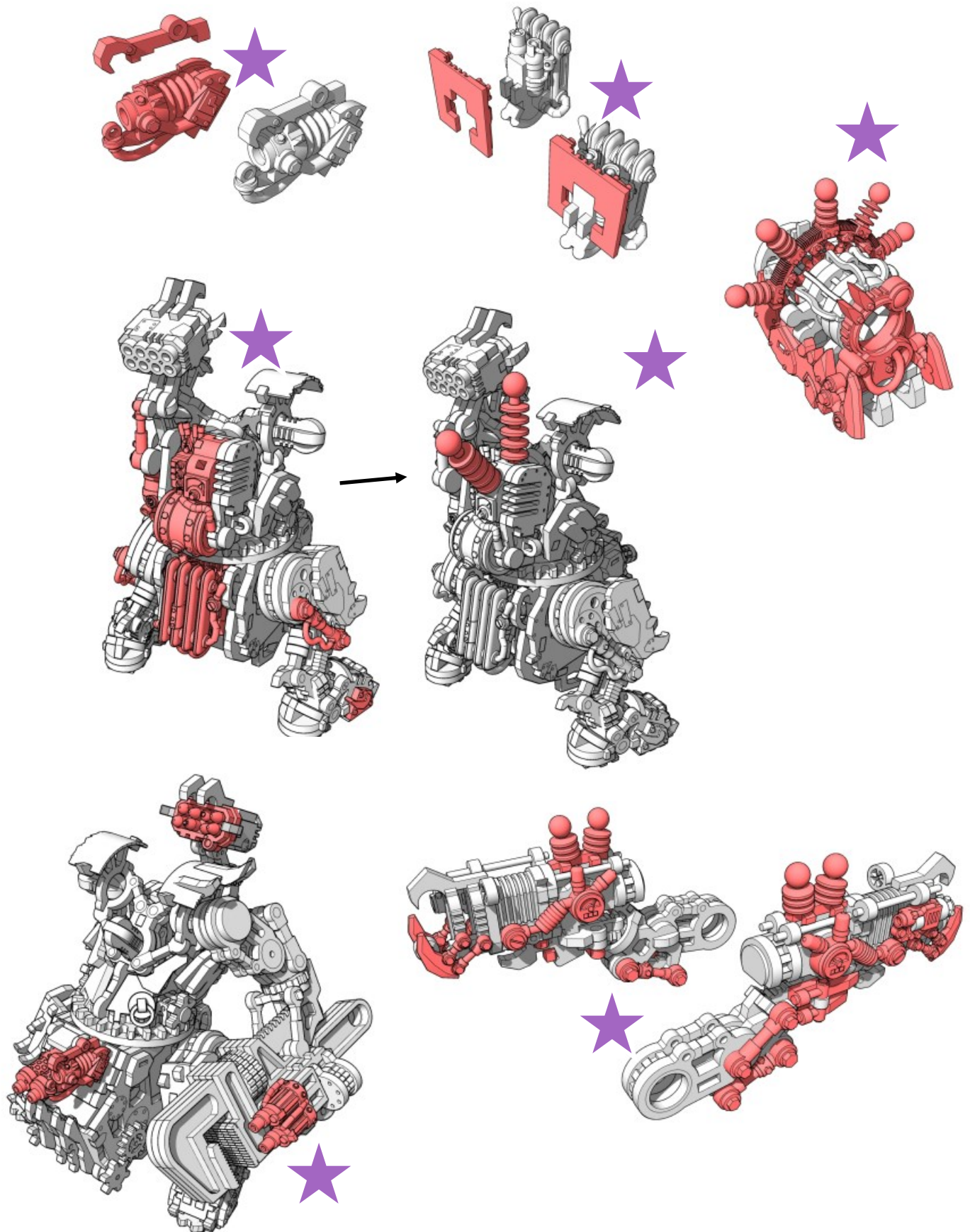
Where a 3D part can be used will be denoted with a

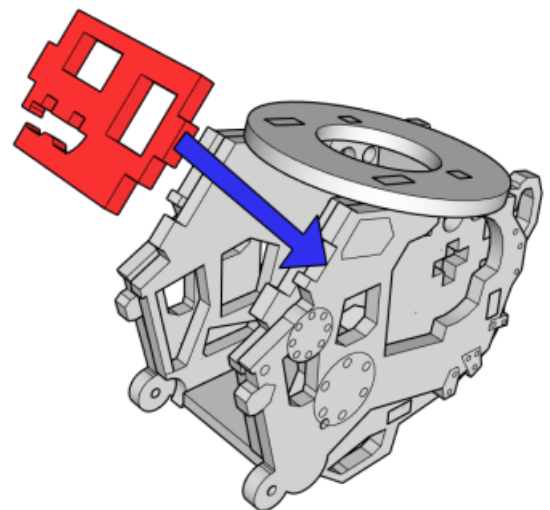
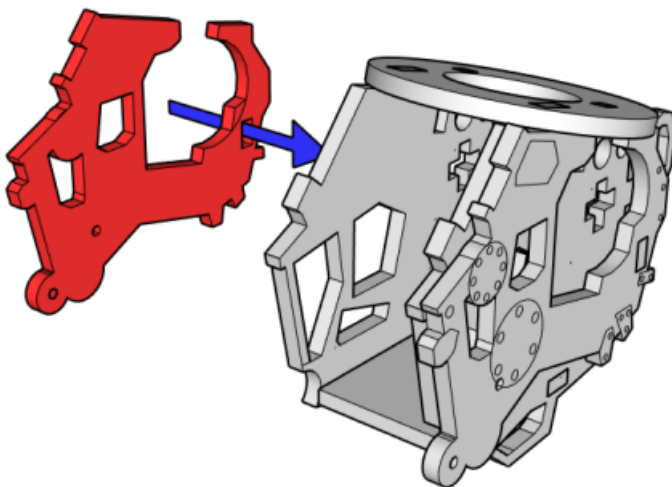
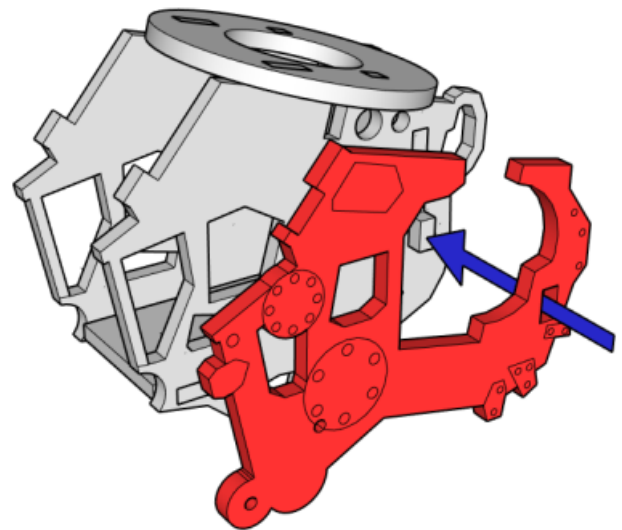
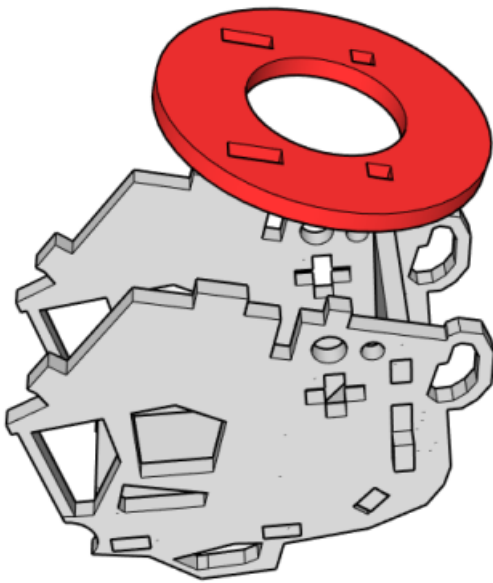
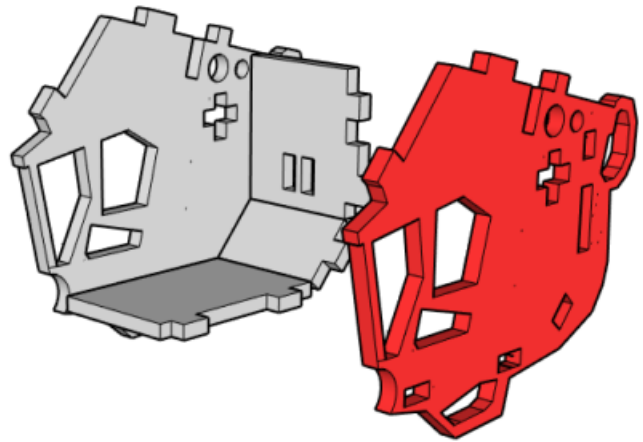
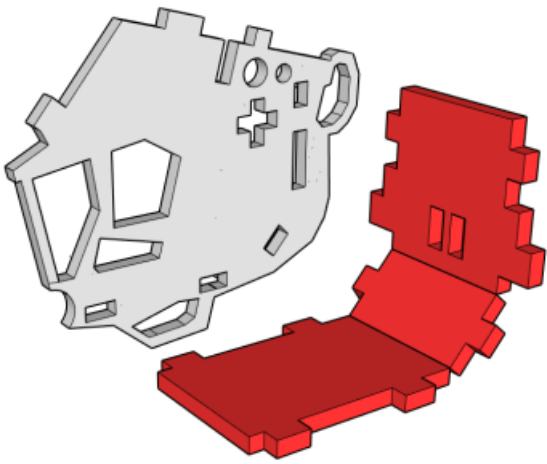


If you are planning to use these parts, please familiarise yourself with the parts below to ensure you do not use the equivalent MDF parts.

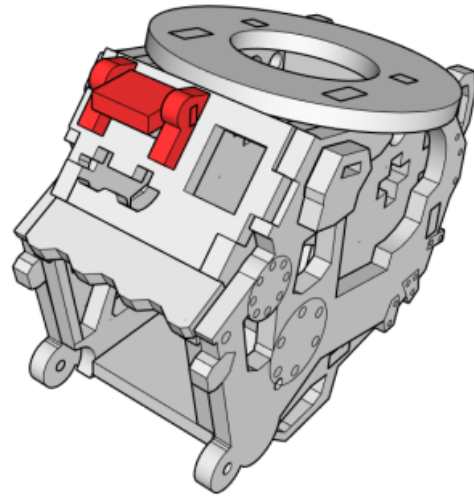
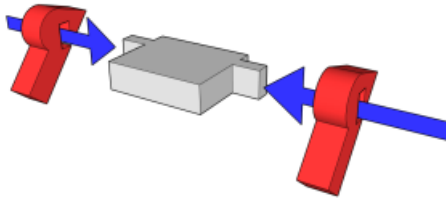
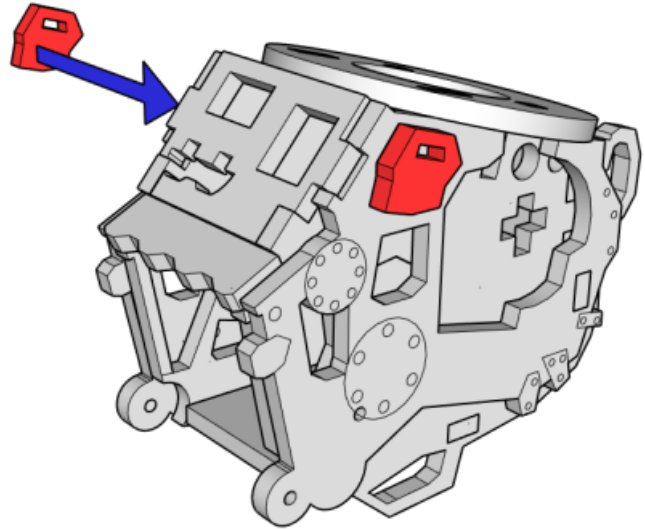
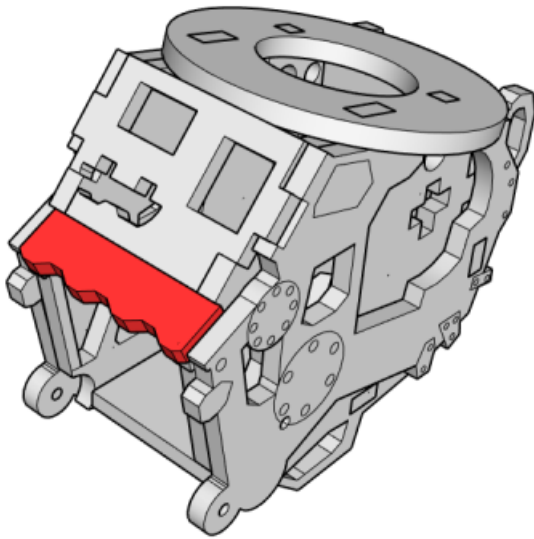


## 3D printed parts assembly and larger pictures

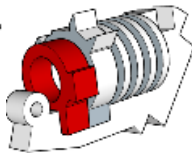
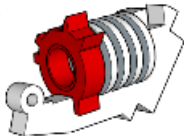
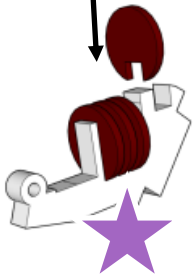




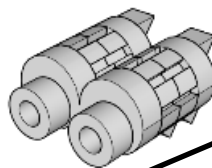
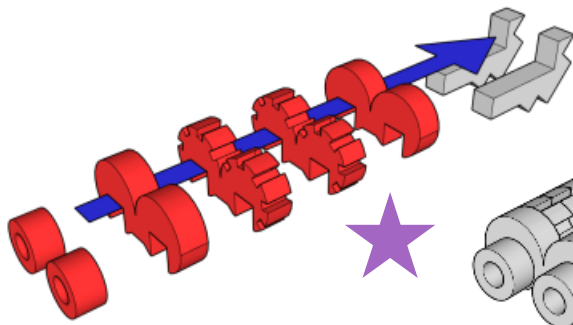
# MINIATURE SCENERY



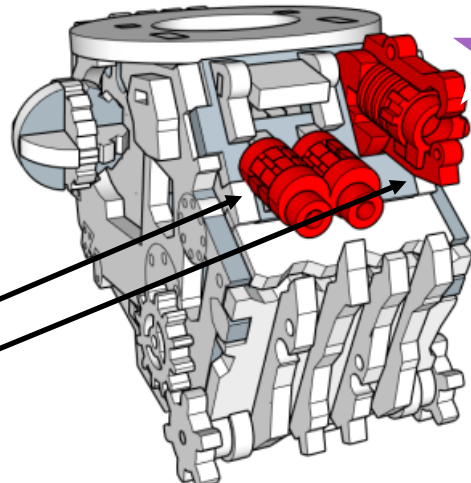
**Cardboard**



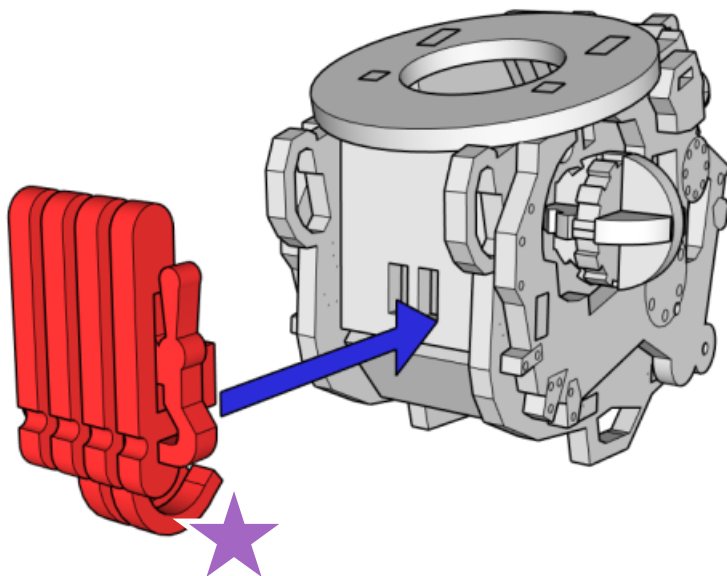
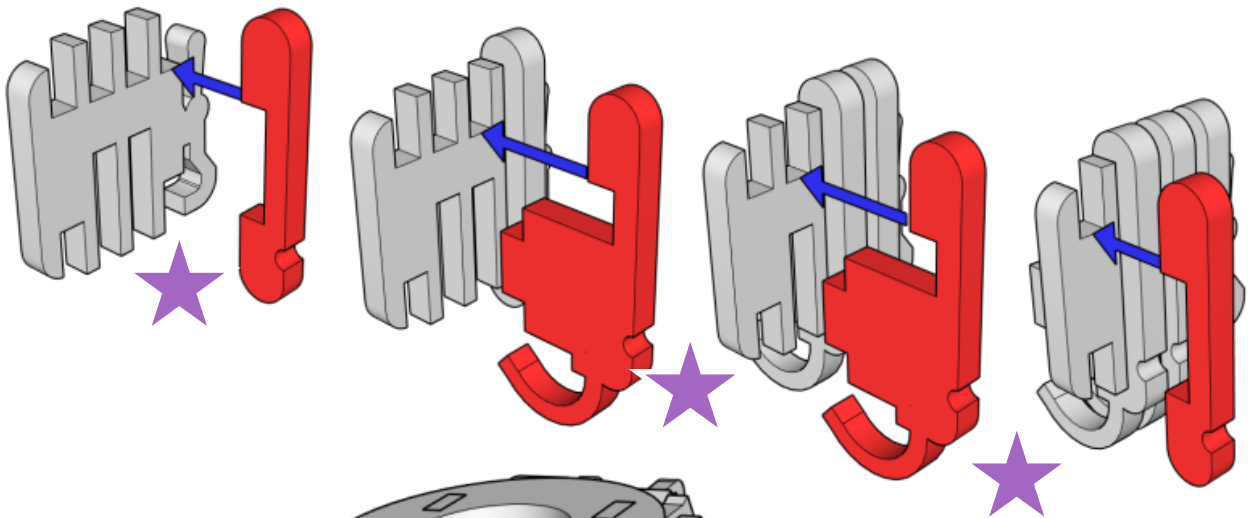
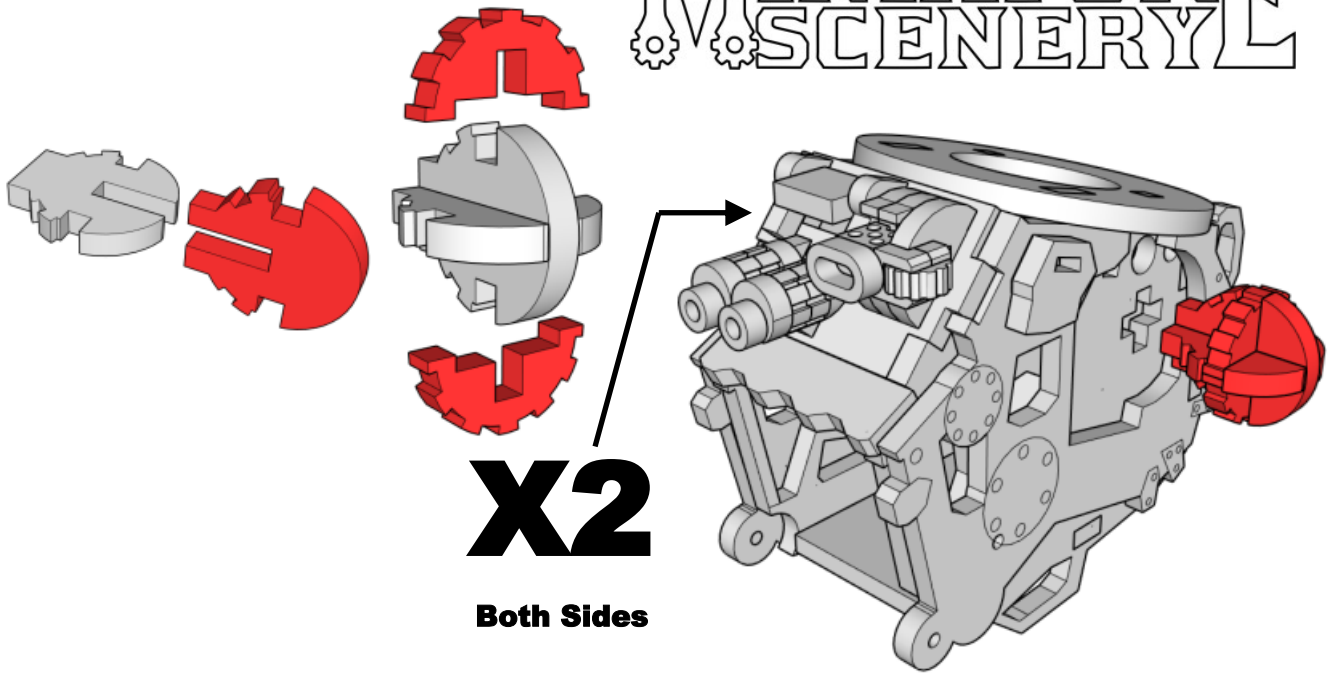
**Cardboard**



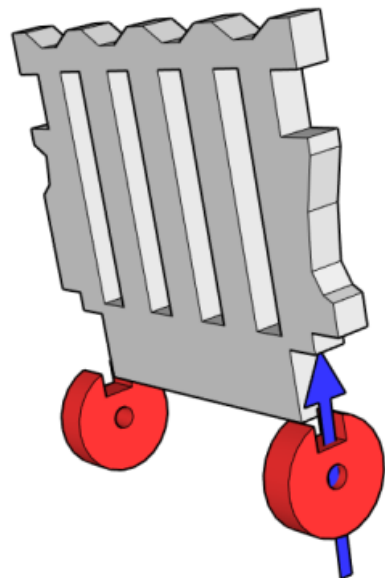
**Optional 3D print files  
available for these  
parts**



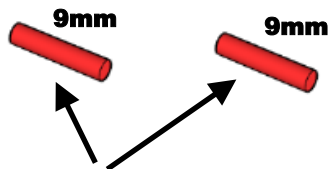
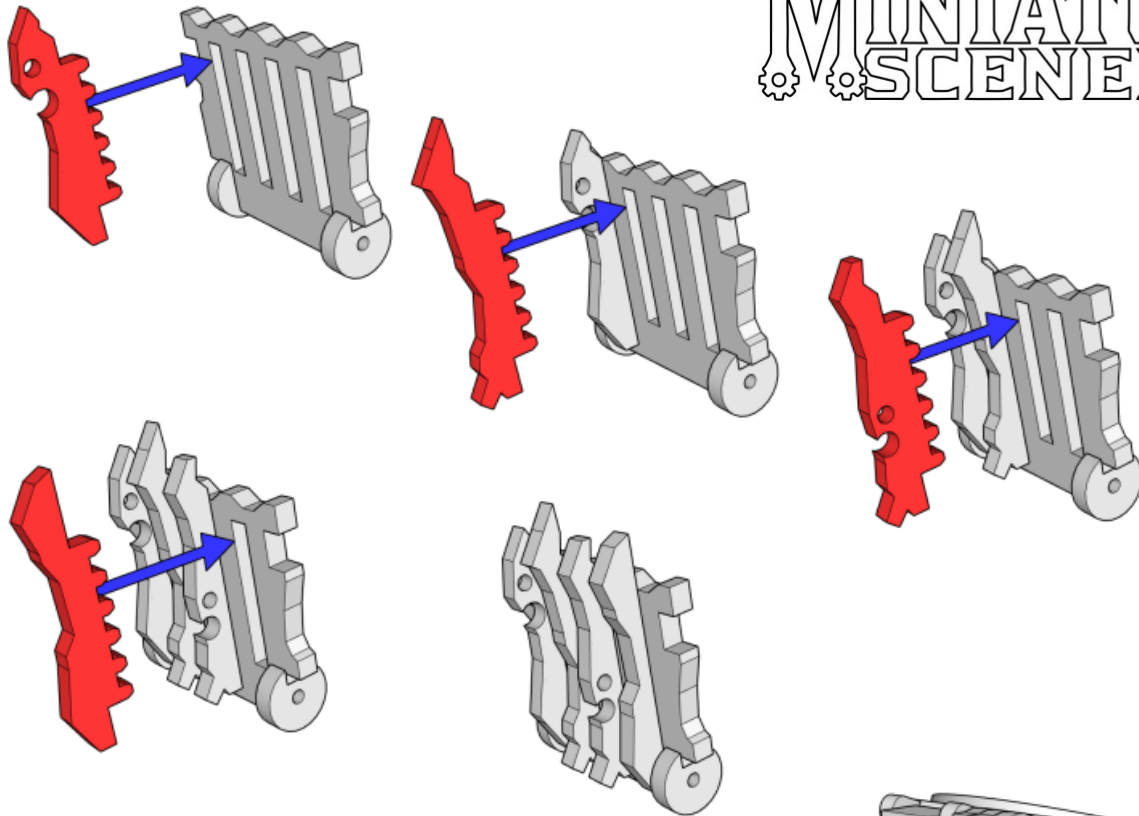
# MINIATURE SCENERY



**Optional 3D  
print part**

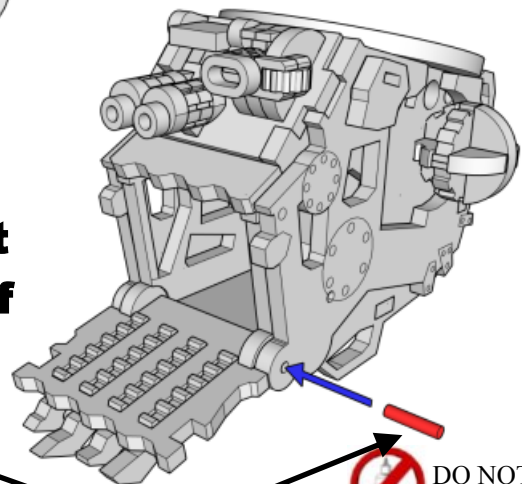


# MINIATURE SCENERY

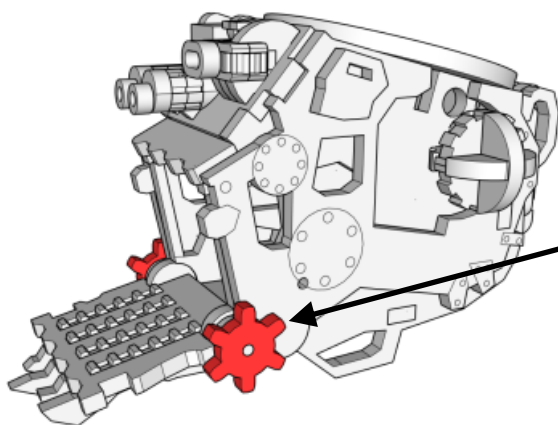


**OPTIONAL: To make the front ramp hinge cut two lengths of tooth pick to 9mm length**

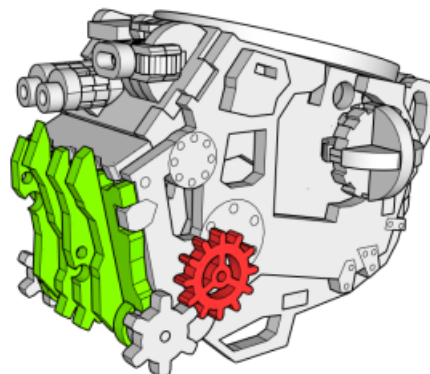
Tooth pick not provided. Hole is 2mm diameter.



**Use cog to glue hinge bolt on outer edge.  
(Glue this bit)**



**Or skip all this and  
just glue to door shut**

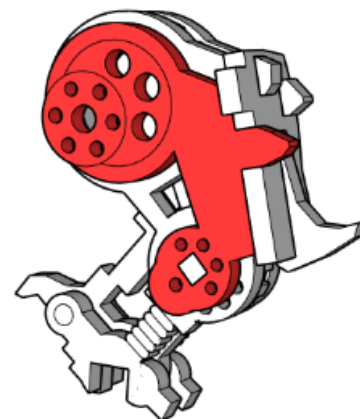
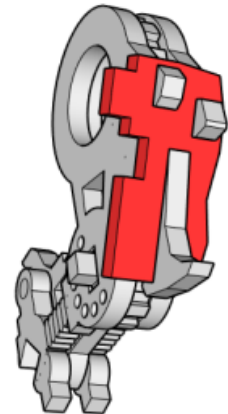
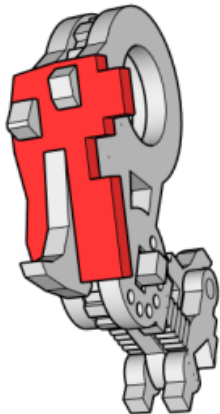
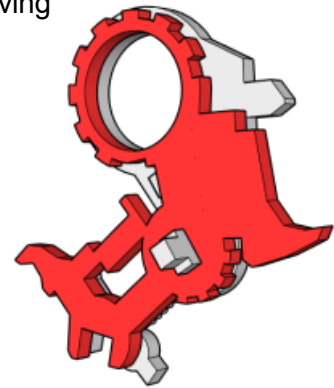
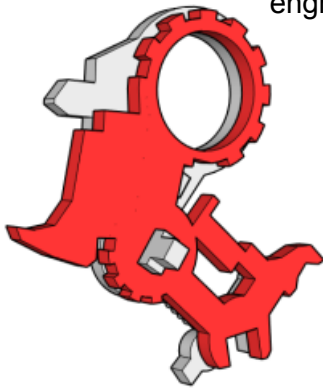
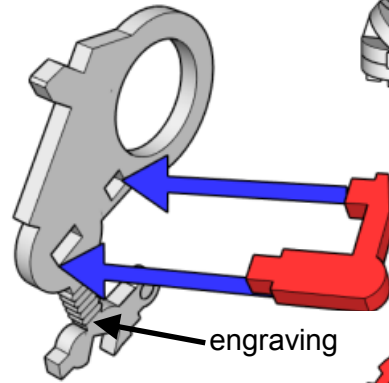
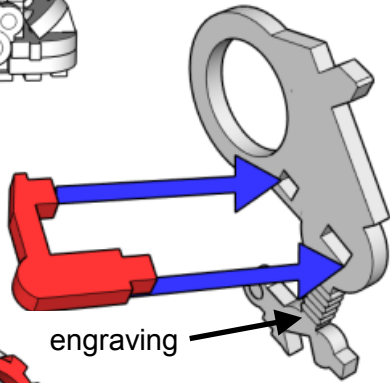
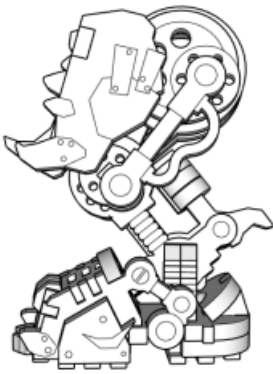


# MINIATURE SCENERY

**Left**

**Right**

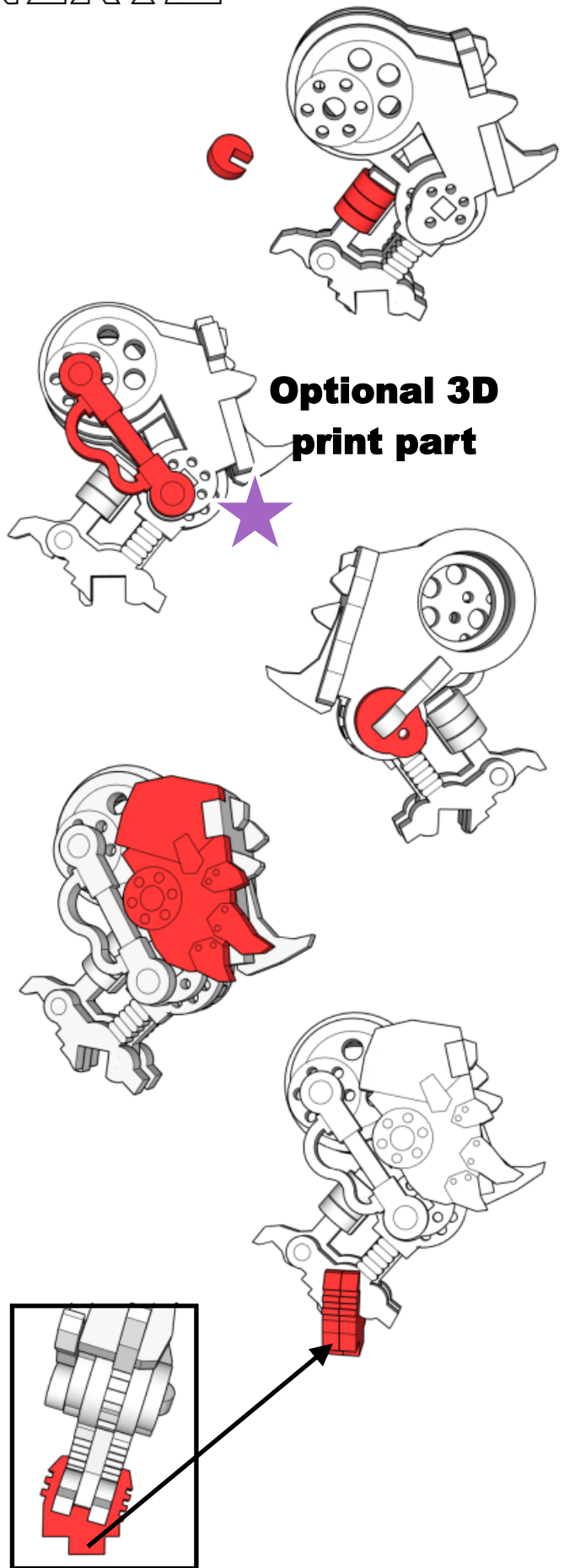
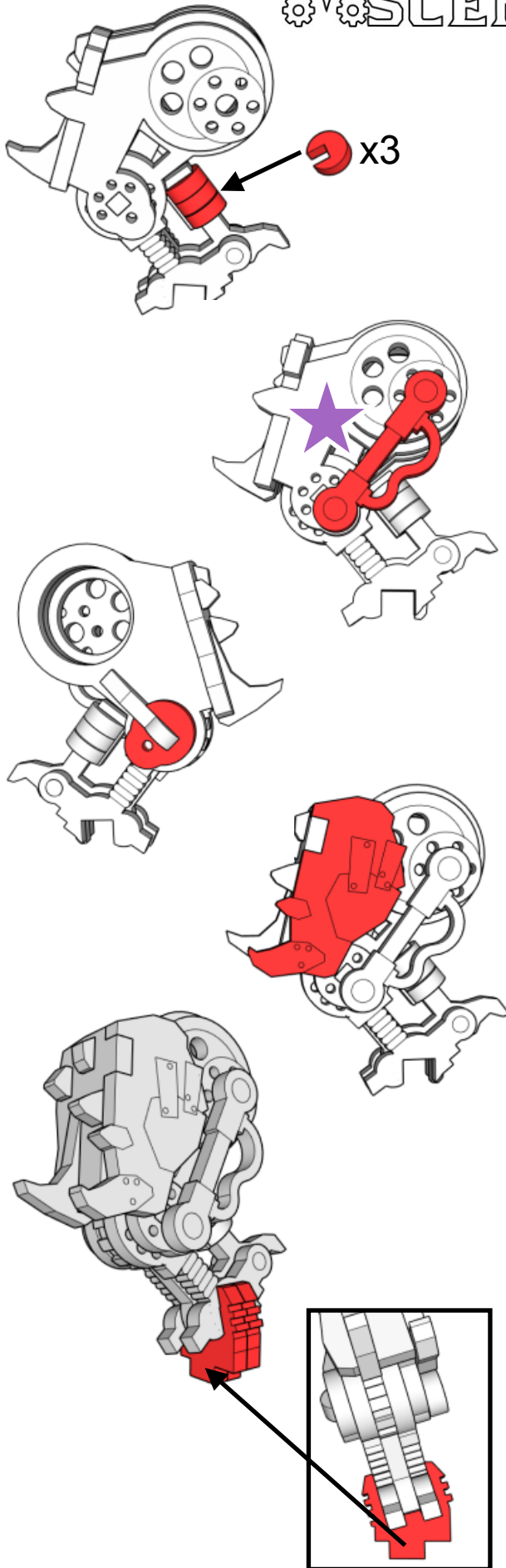
**Be sure to make legs as a mirror to each other**



# MINIATURE SCENERY

**Left**

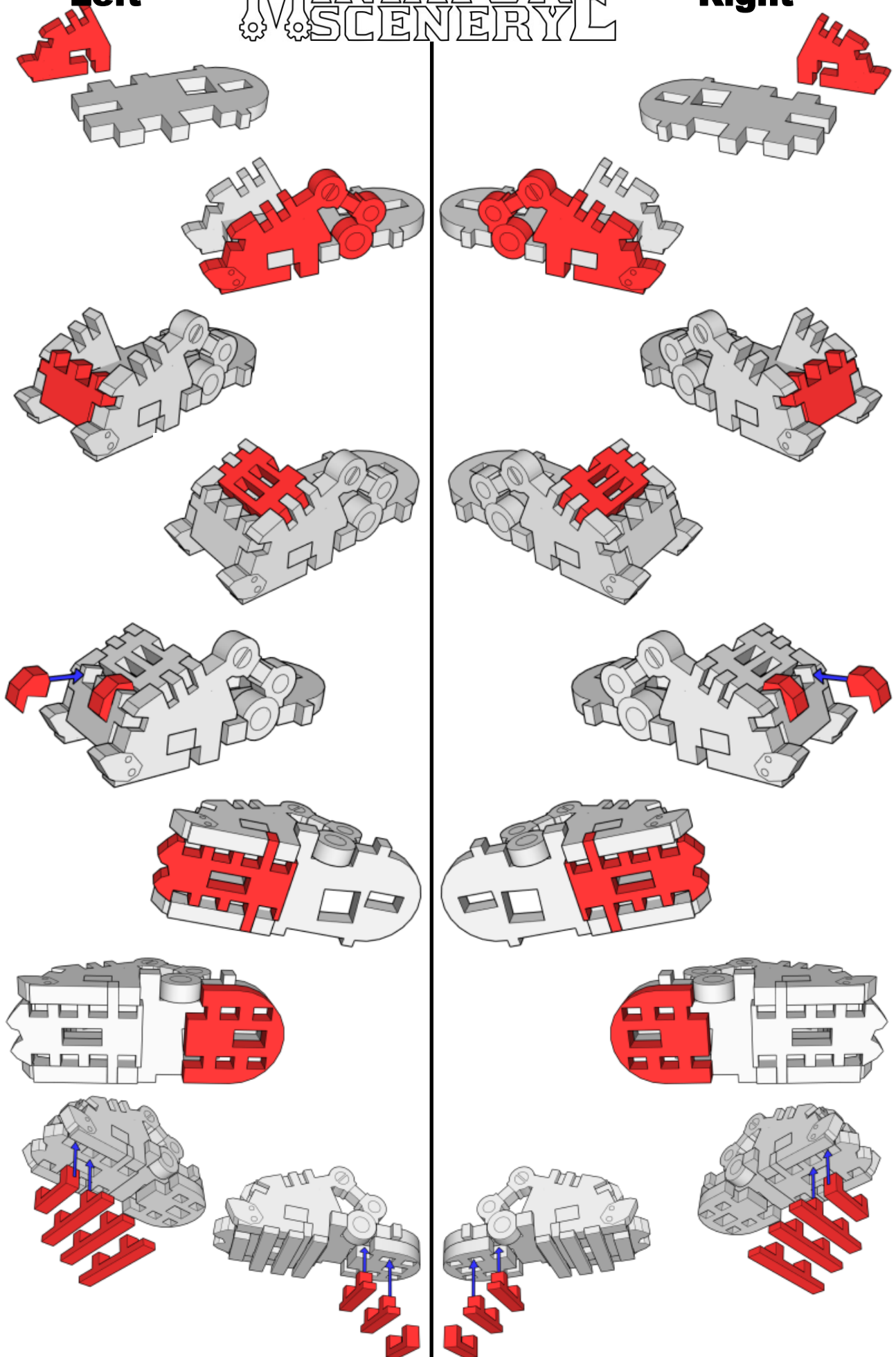
**Right**



# MINIATURE SCENERY

**Left**

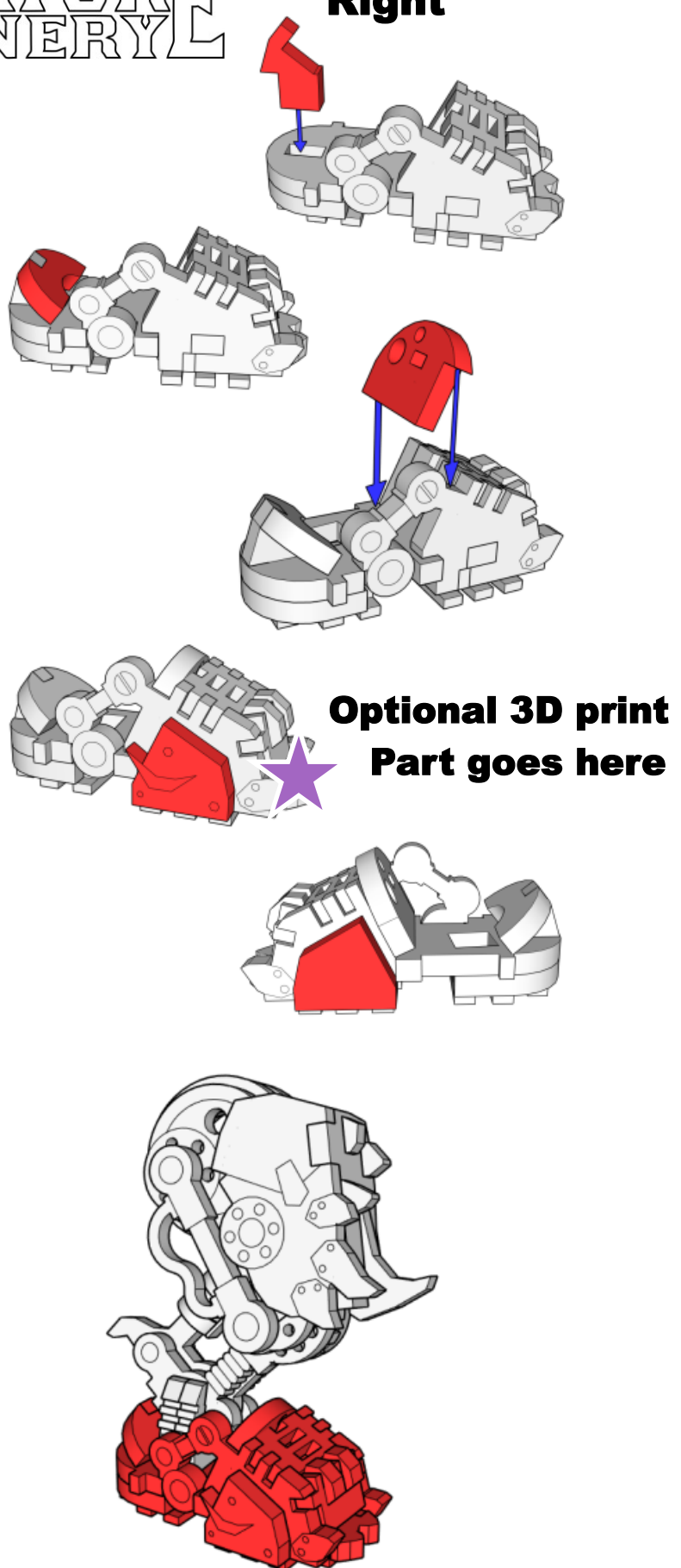
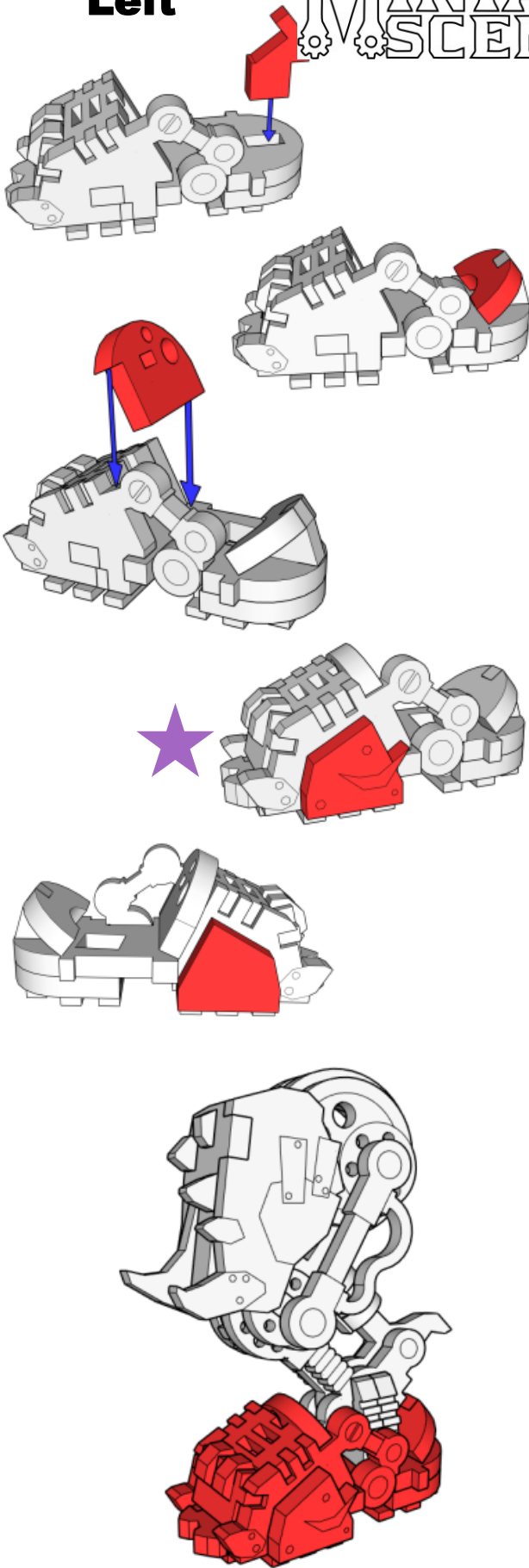
**Right**



**Left**

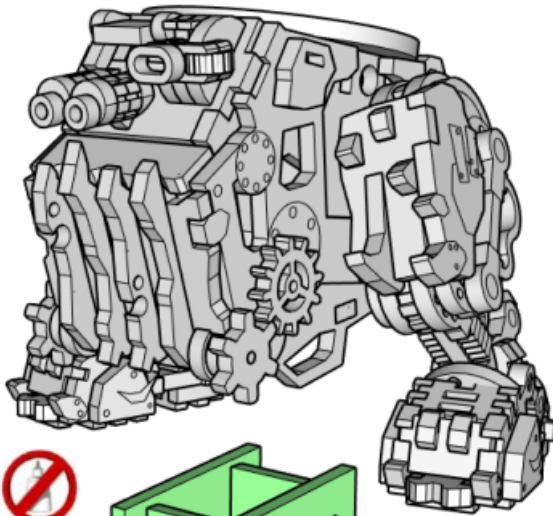
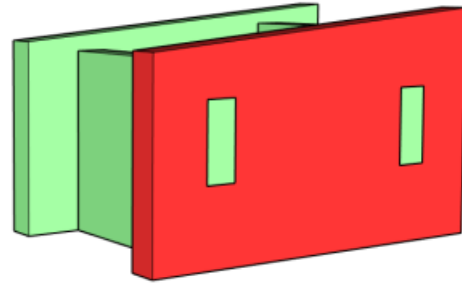
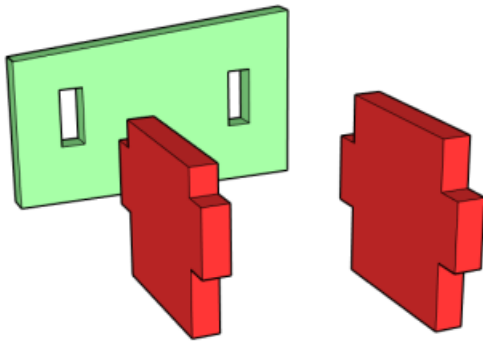
# MINIATURE SCENERY

**Right**

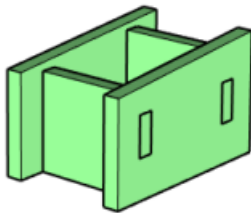


## OPTIONAL Belly rest

# MINIATURE SCENERY



DO NOT  
GLUE



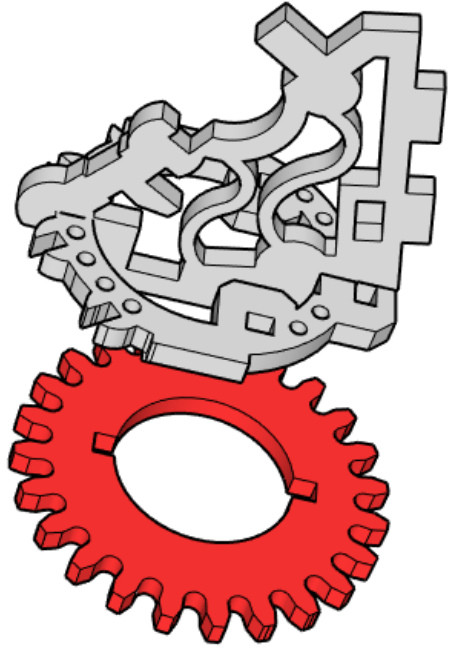
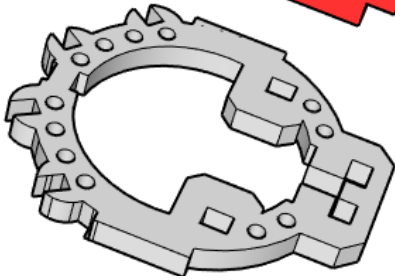
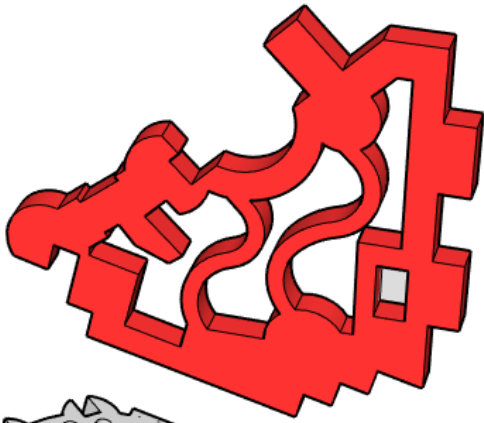
**BELLY Rest is ONLY to  
help glue the legs on.**

**DO NOT GLUE**

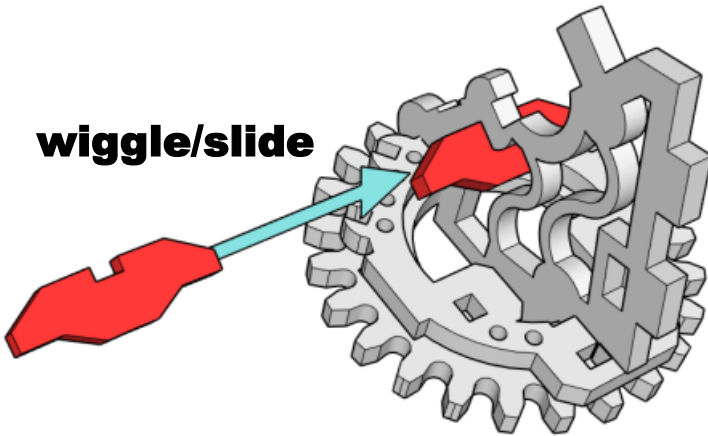
**Remove once Legs are  
glued on securely.**

**(Slope to front)**

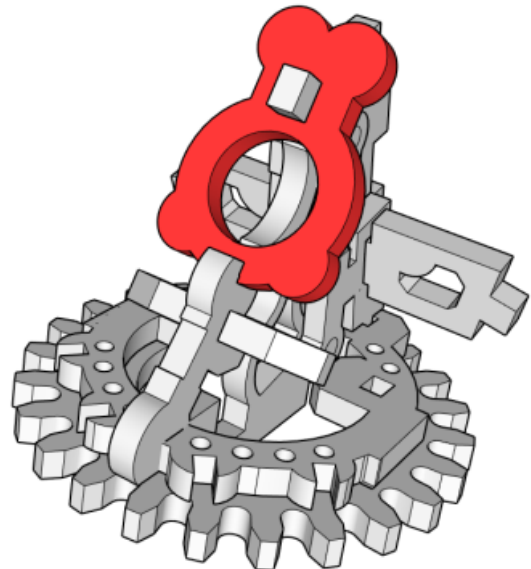
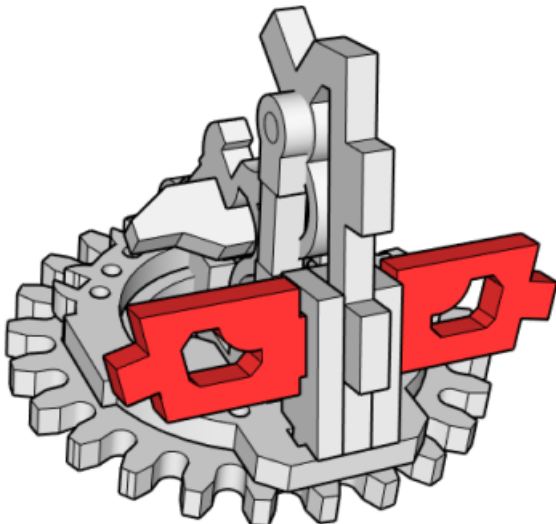
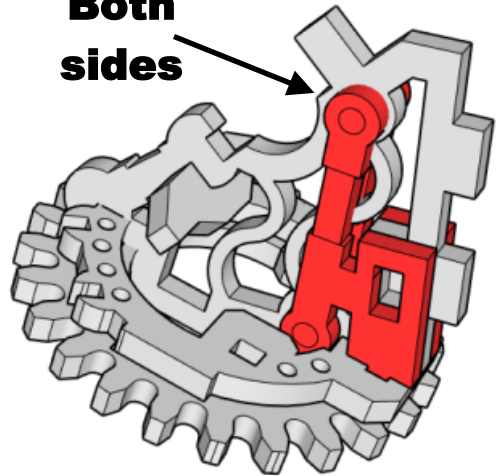
# MINIATURE SCENERY



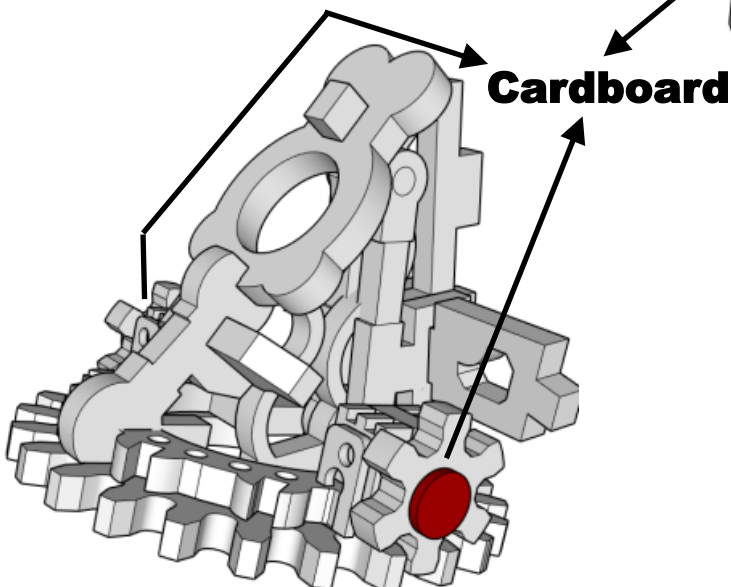
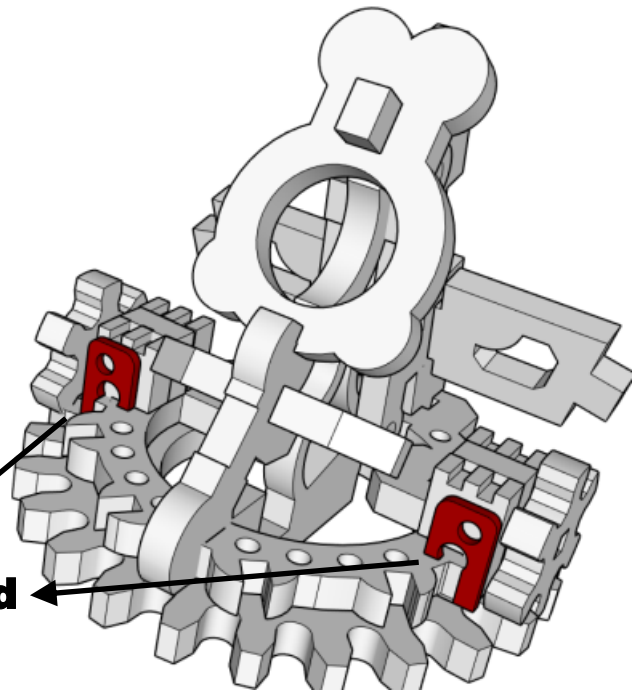
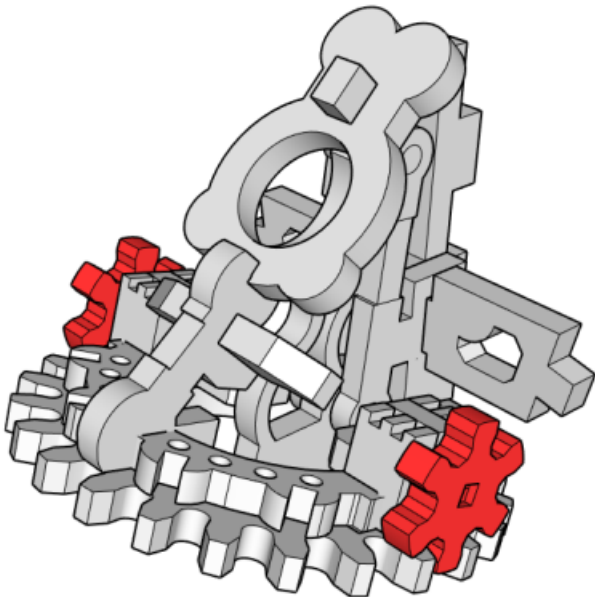
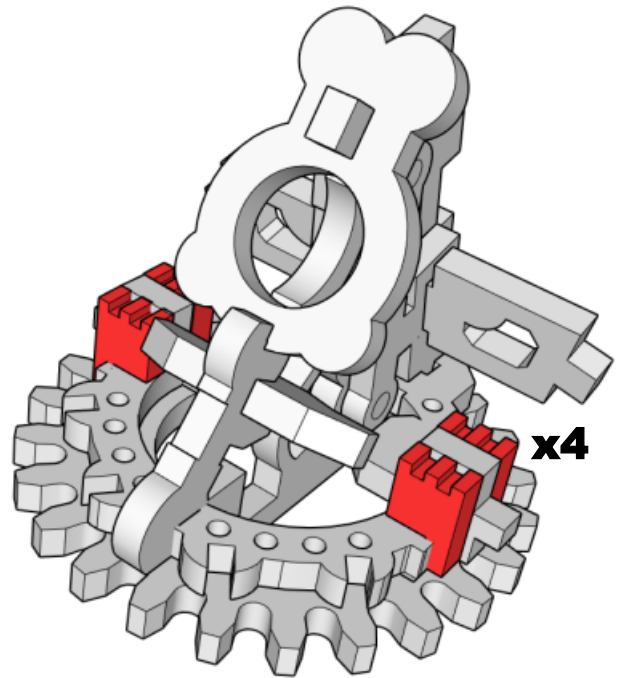
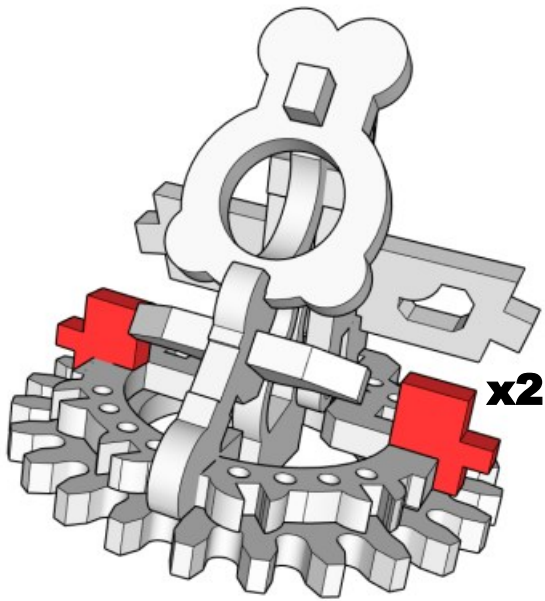
**wiggle/slide**



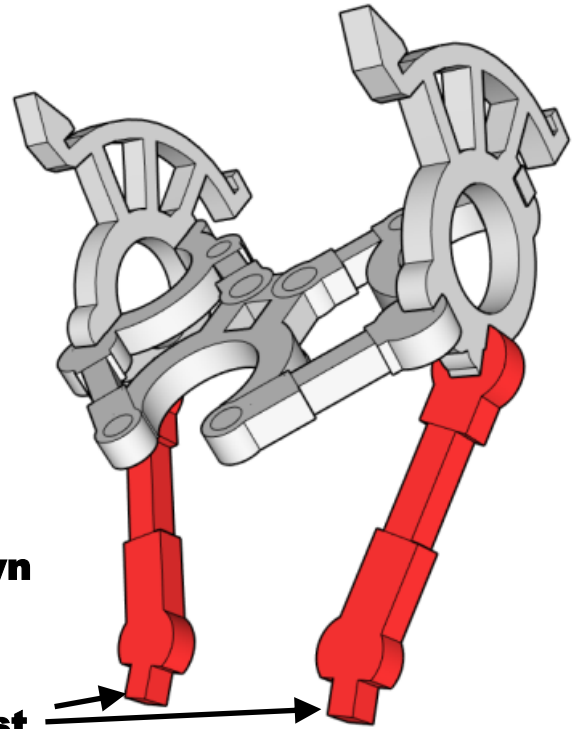
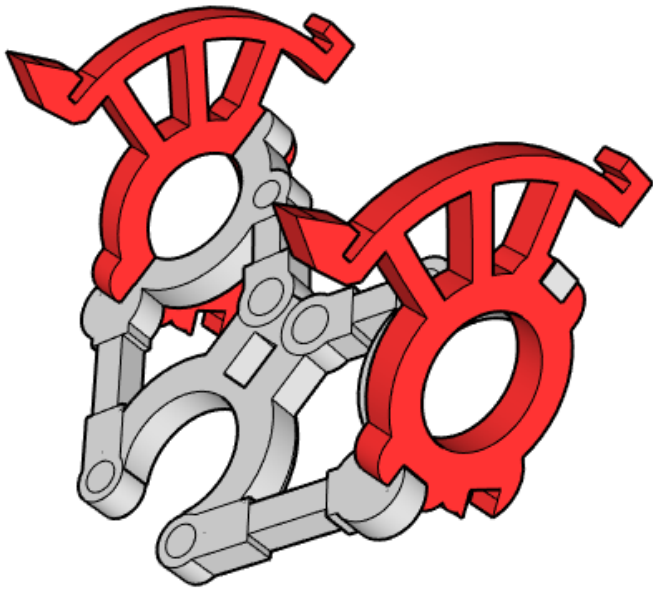
**Both  
sides**



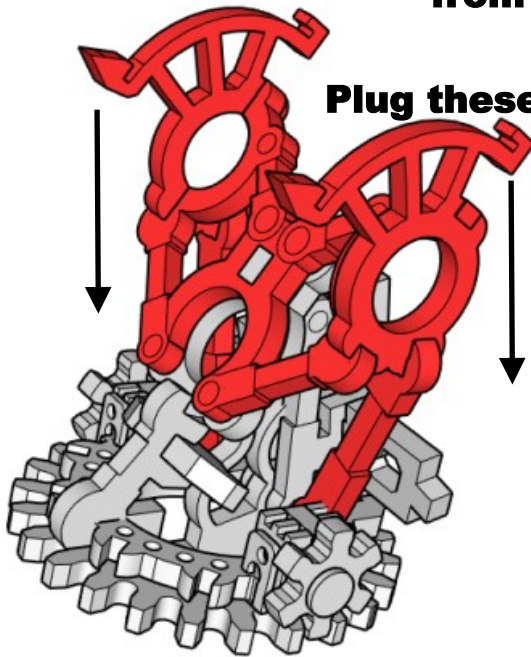
# MINIATURE SCENERY



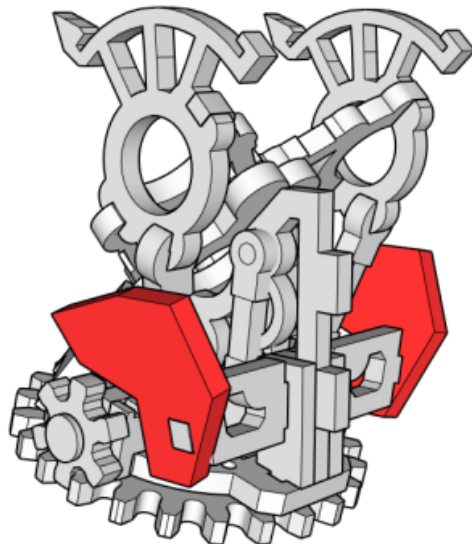
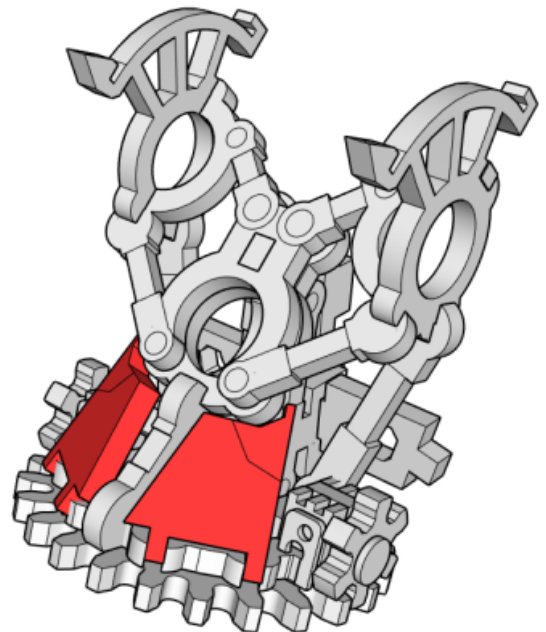
# MINIATURE SCENERY

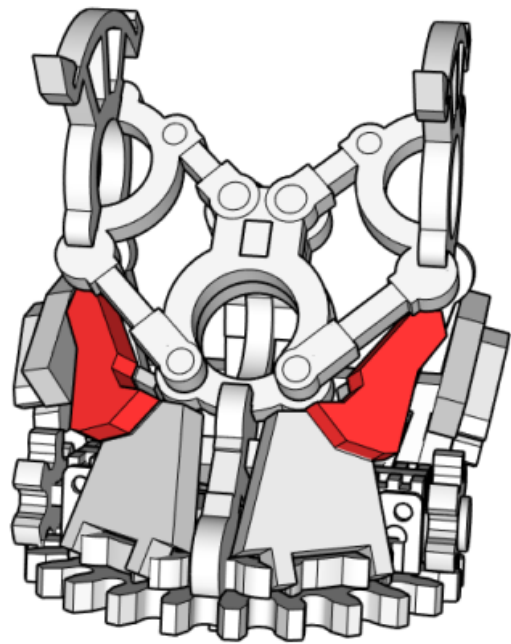
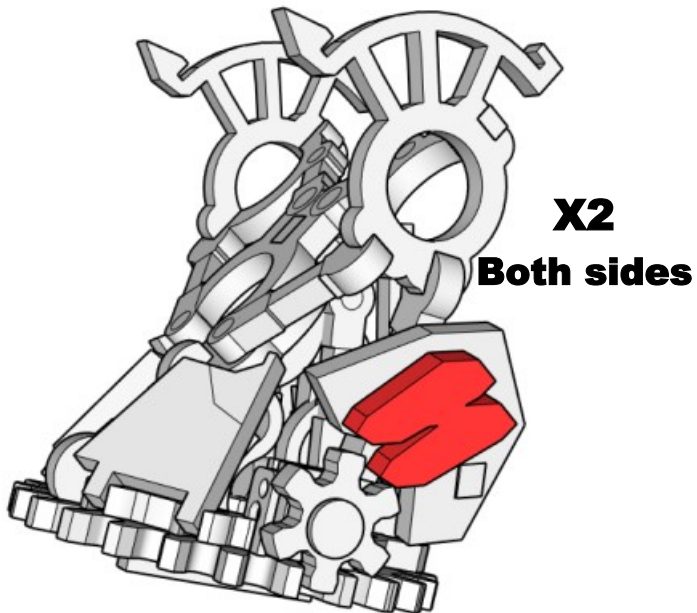


**Lower shoulders down  
from above.**

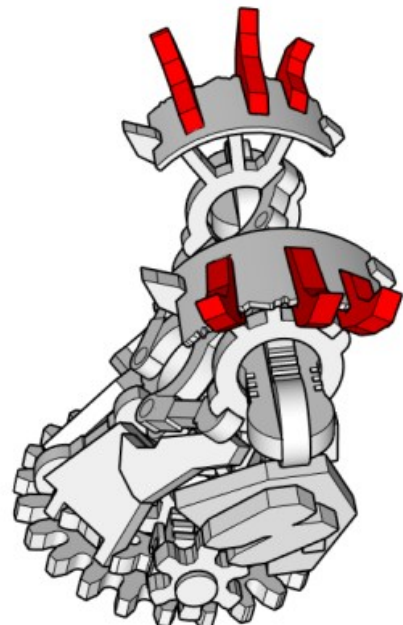
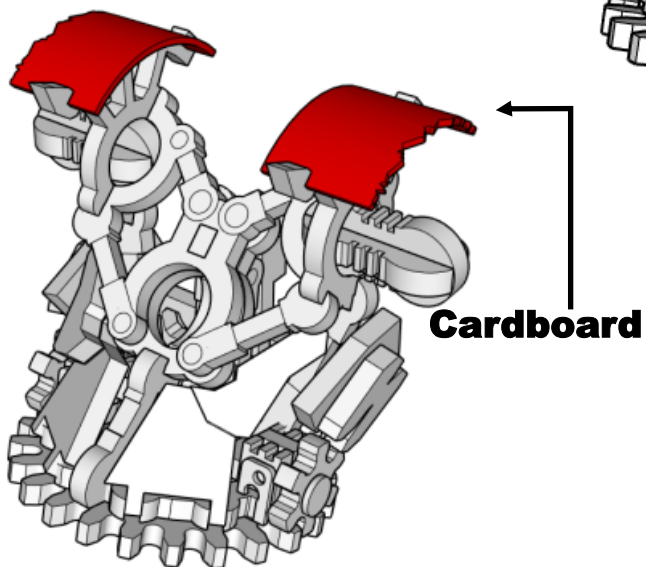
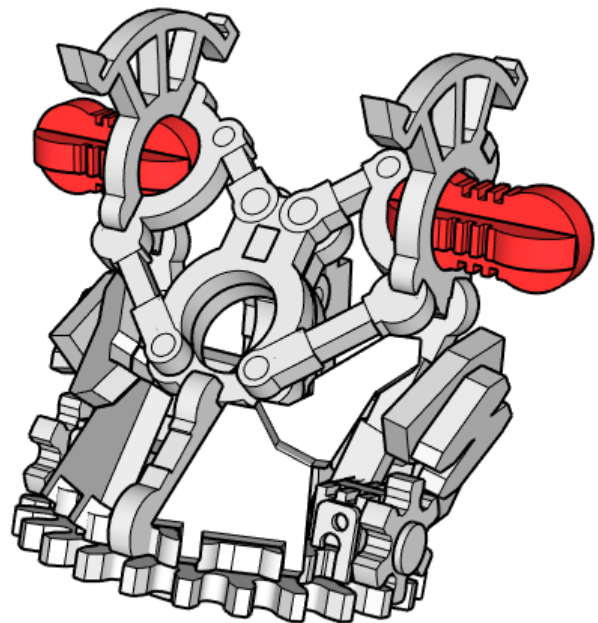


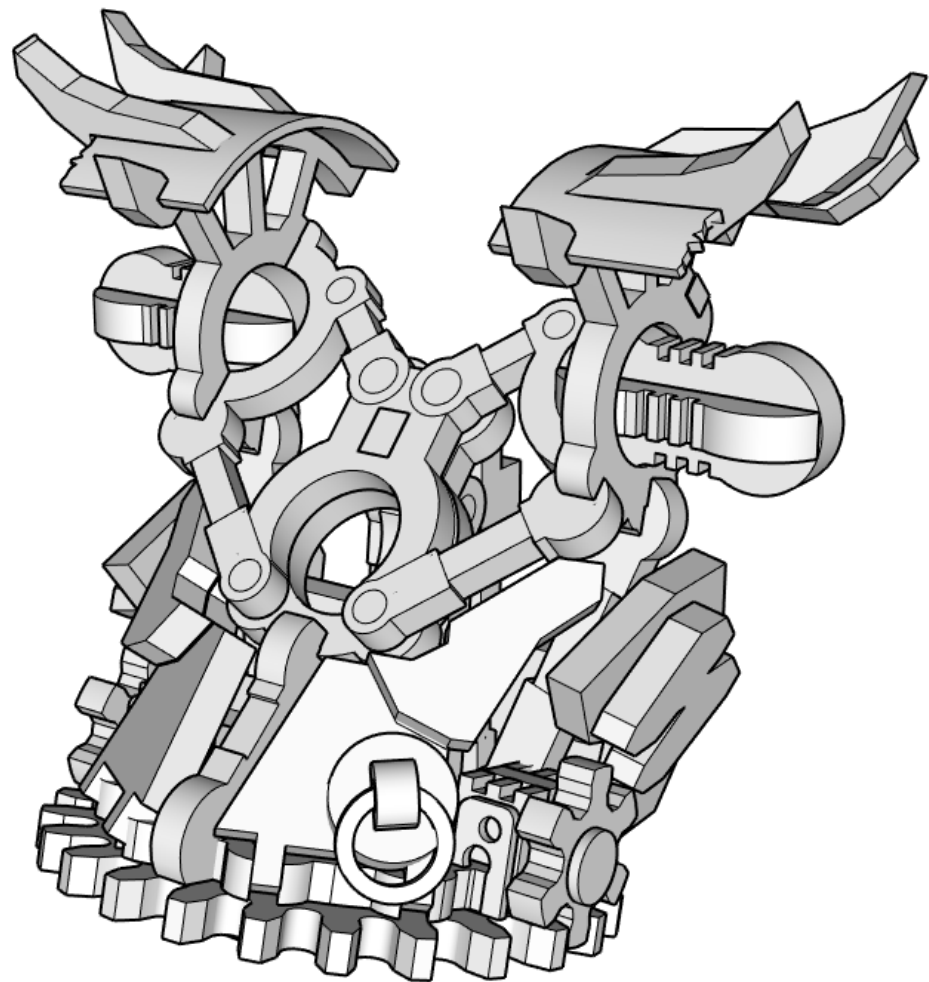
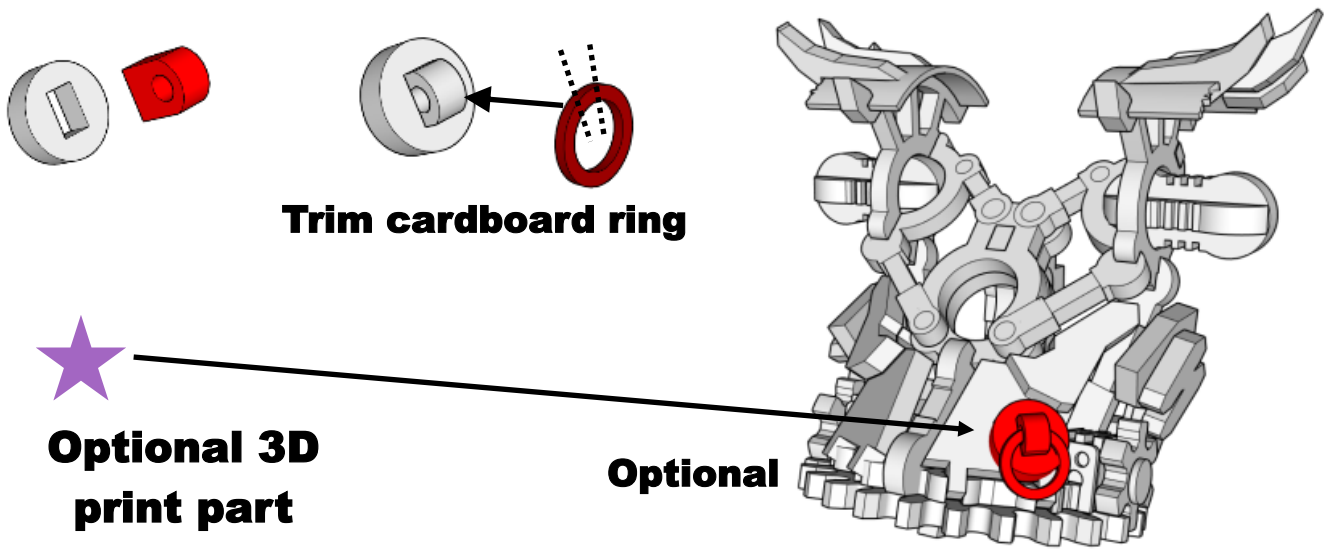
**Plug these bits in first**



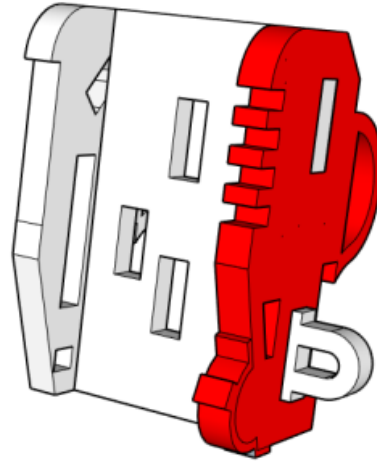
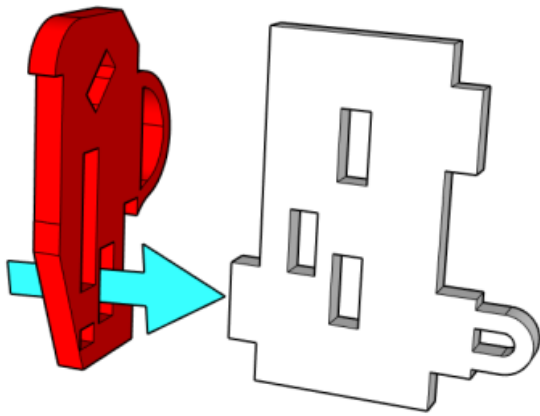


**Might be best to wait for  
arms to be done before  
positioning arm mounts**

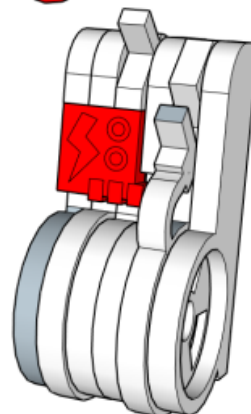
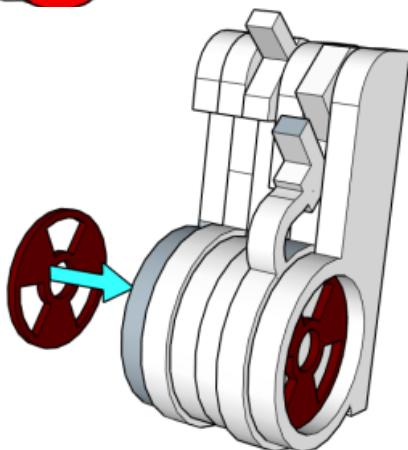
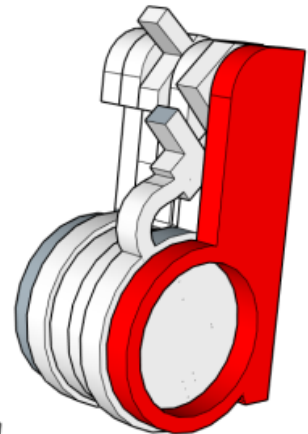
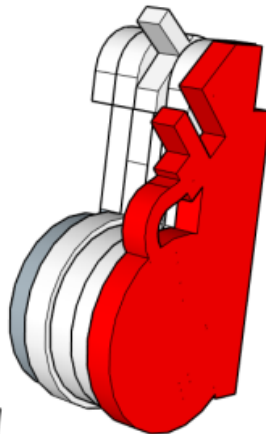
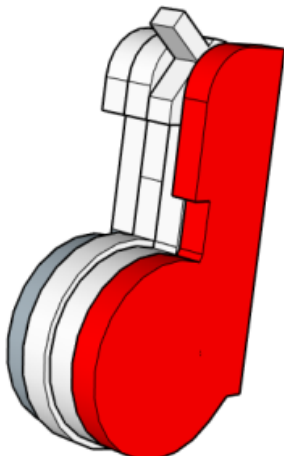
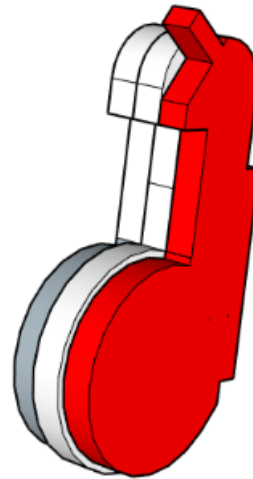
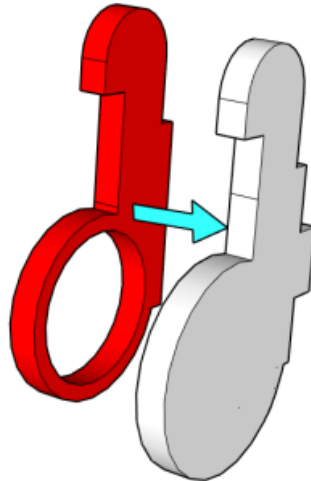


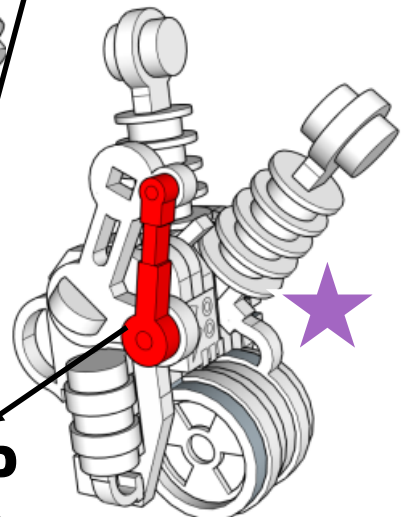
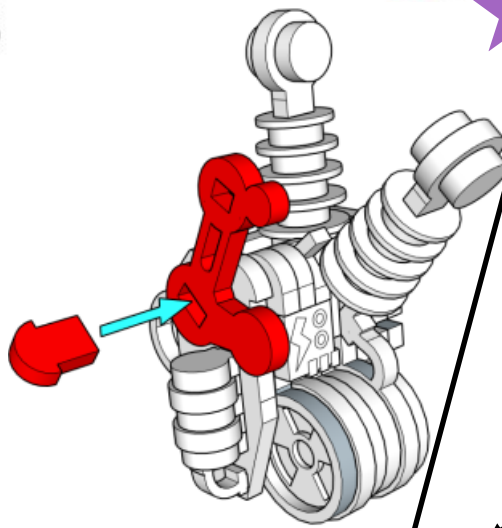
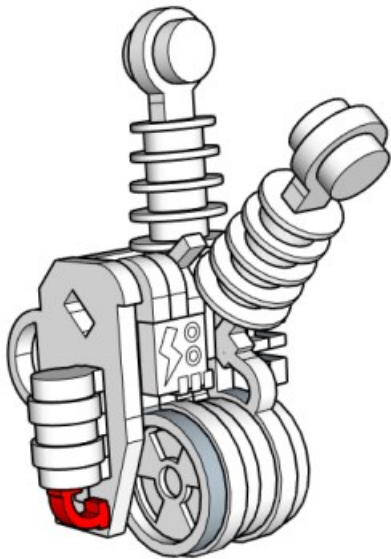
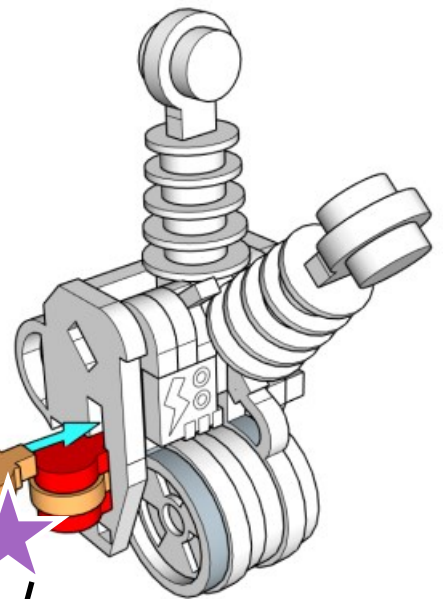
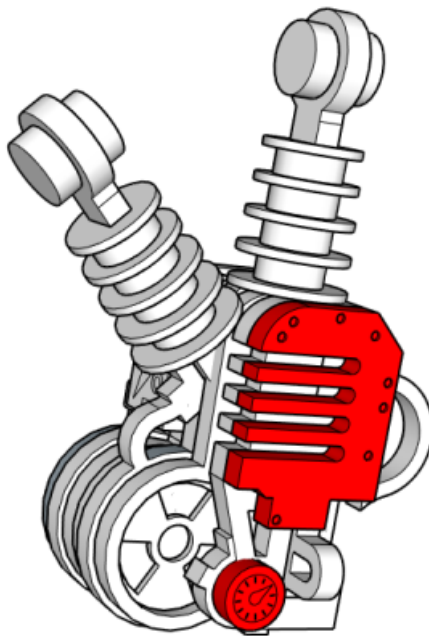
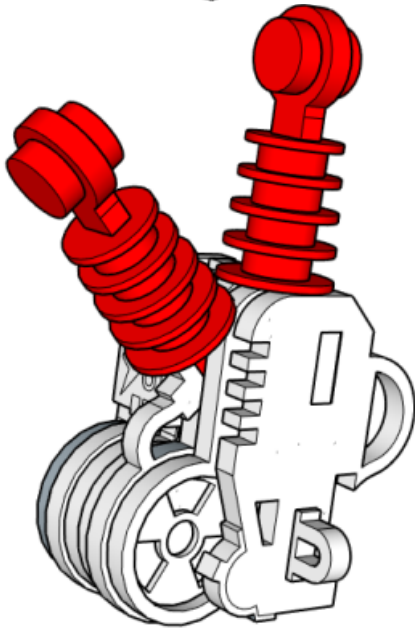
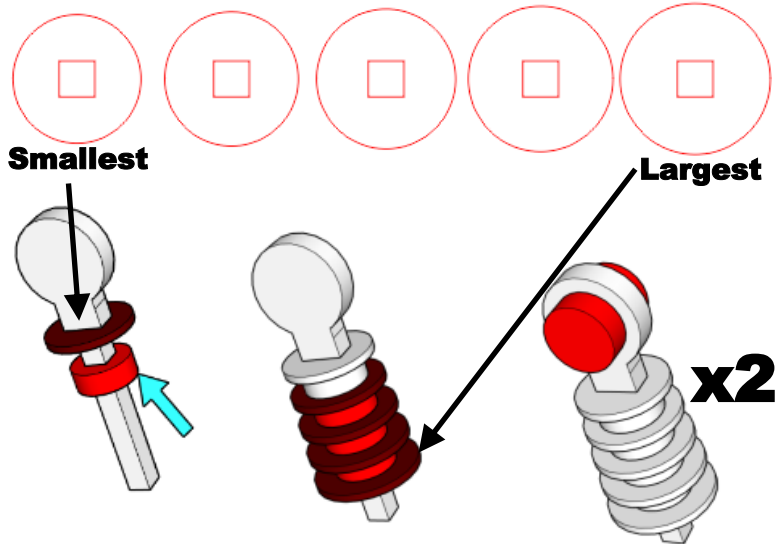
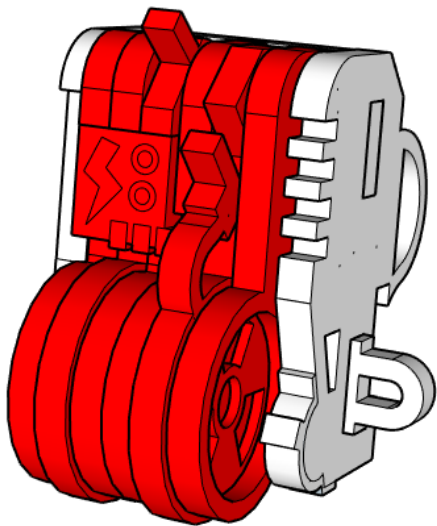


**Chest done**

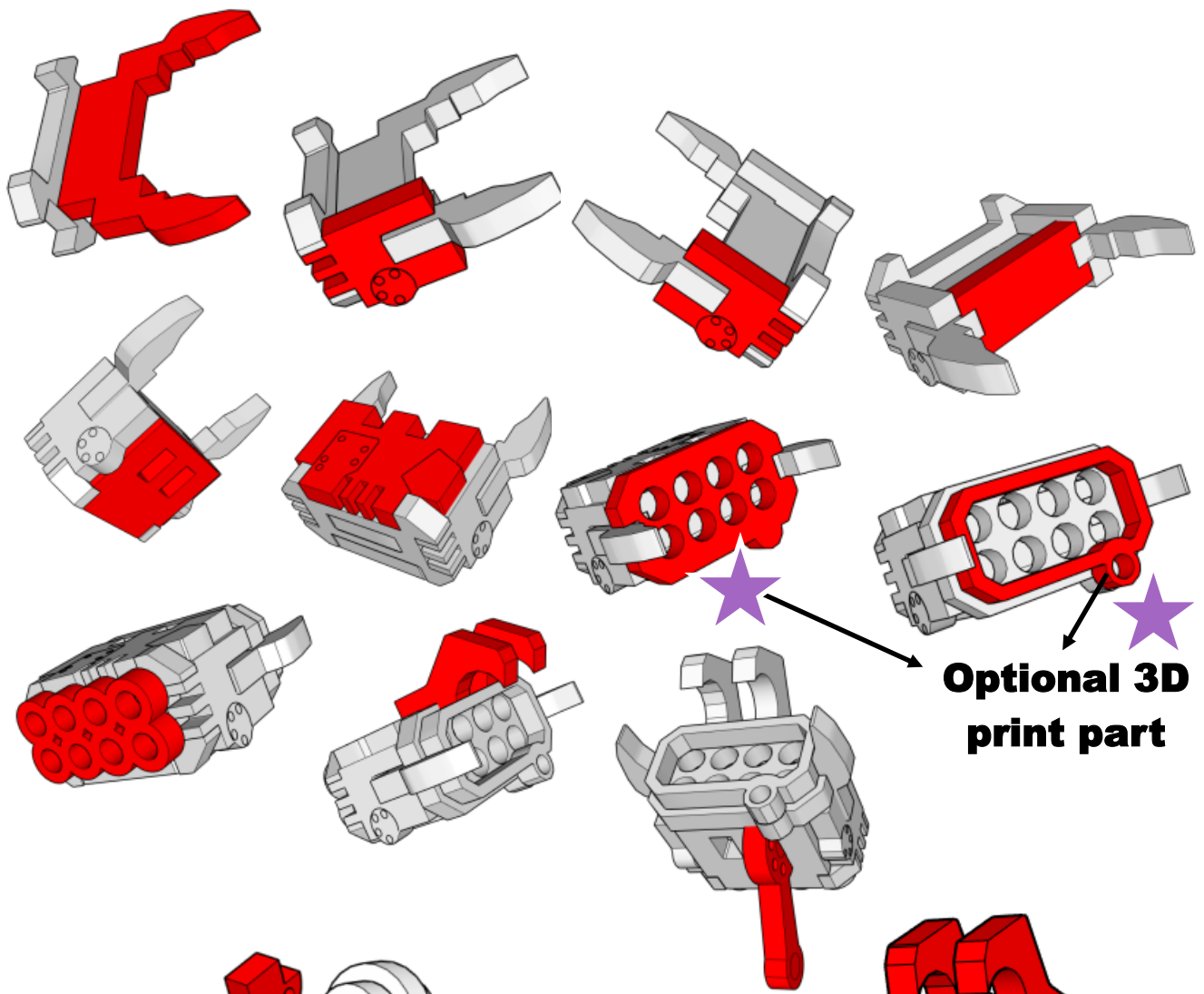


**Stop here if using  
3D printed parts**

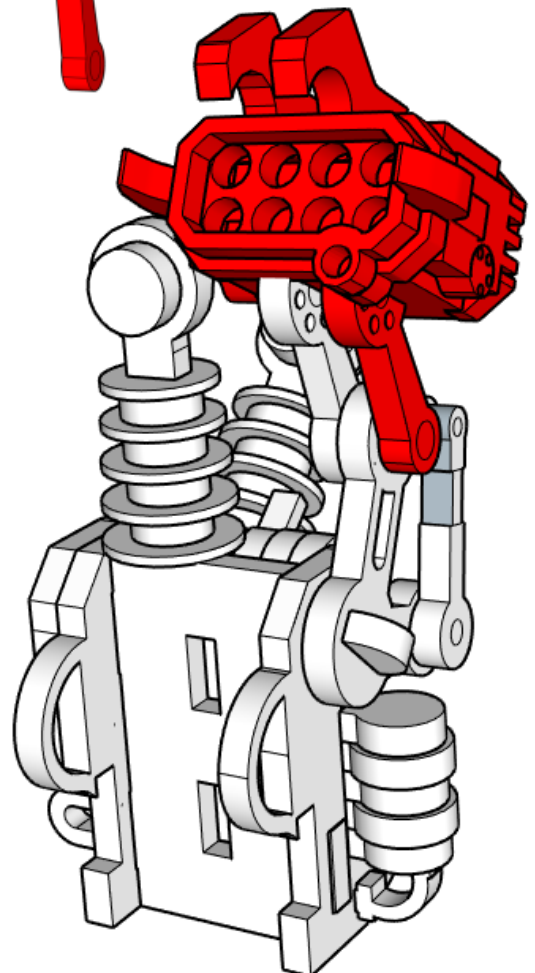
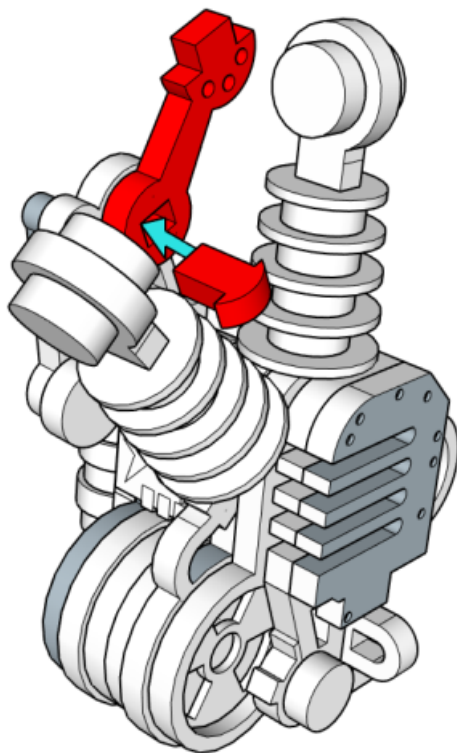




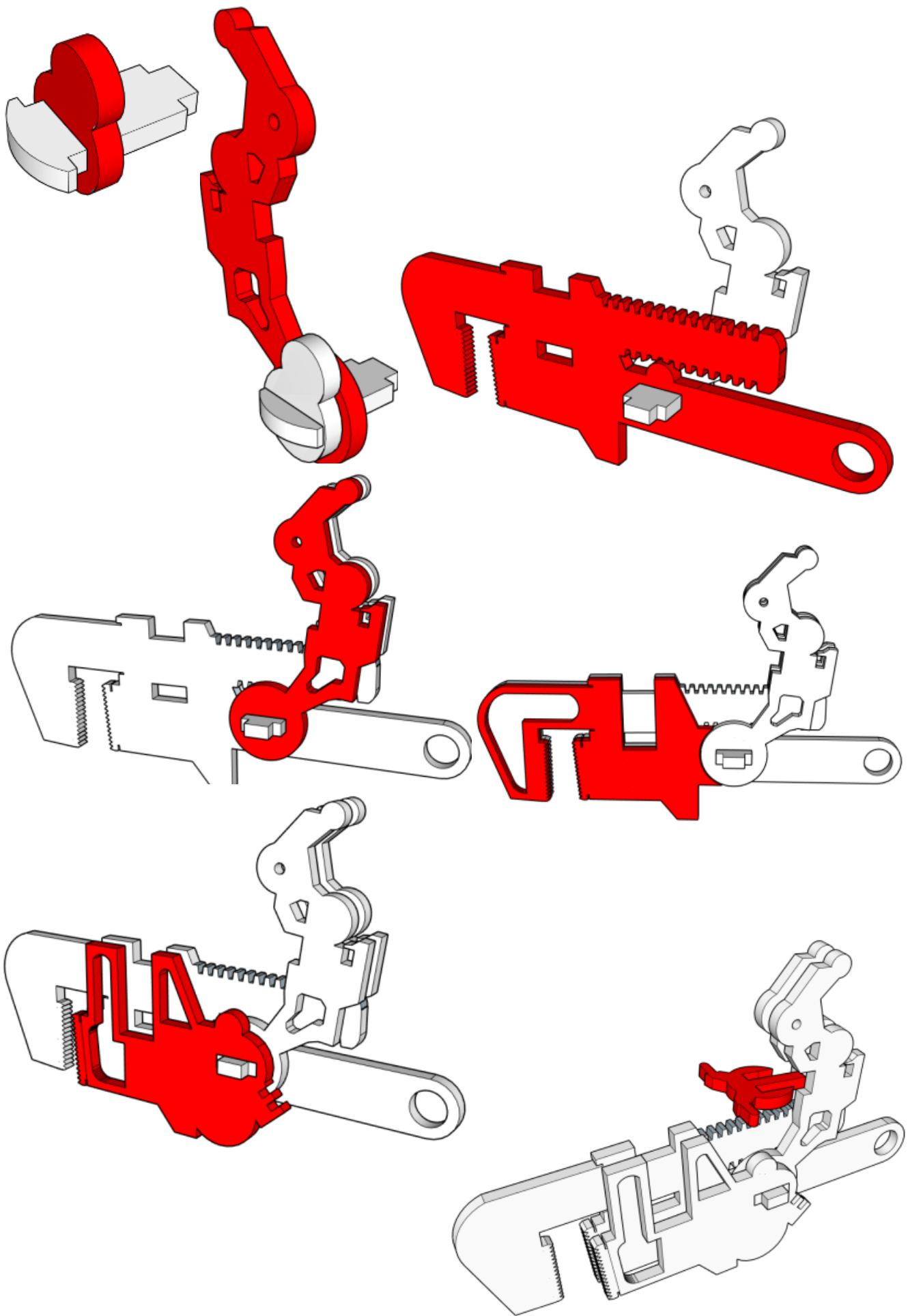
**Optional 3D  
print parts**

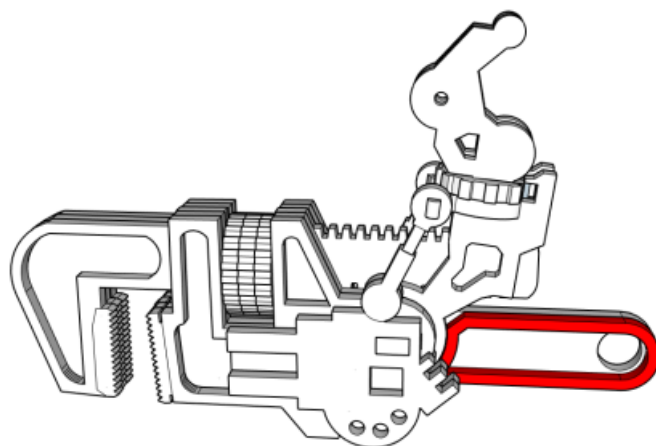
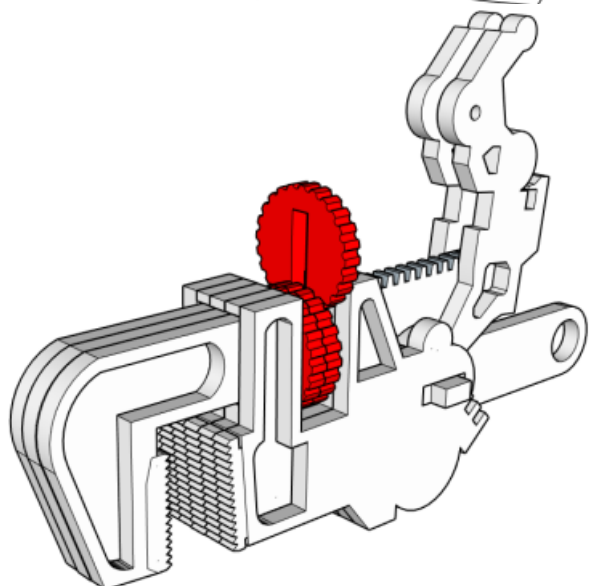
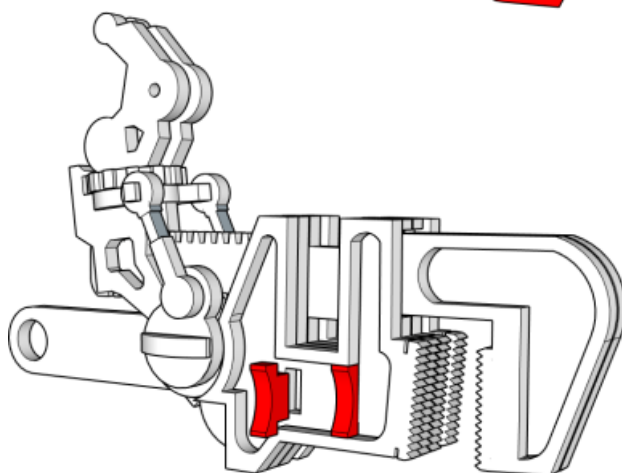
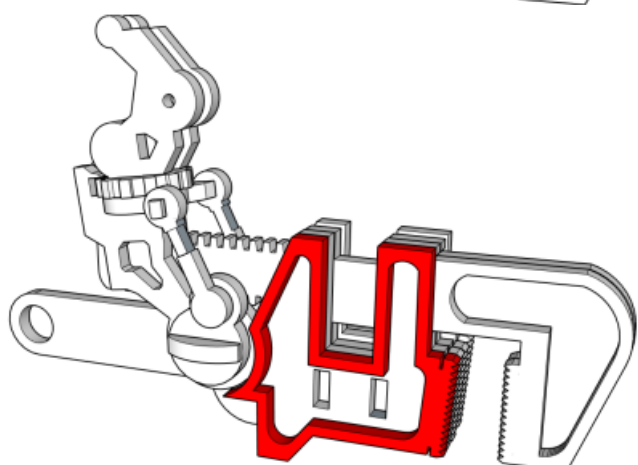
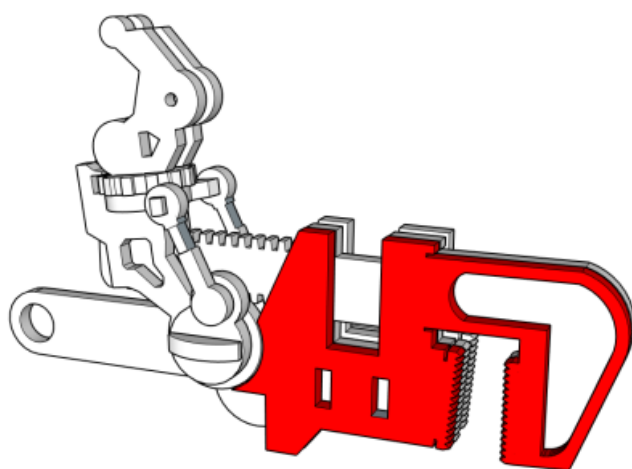
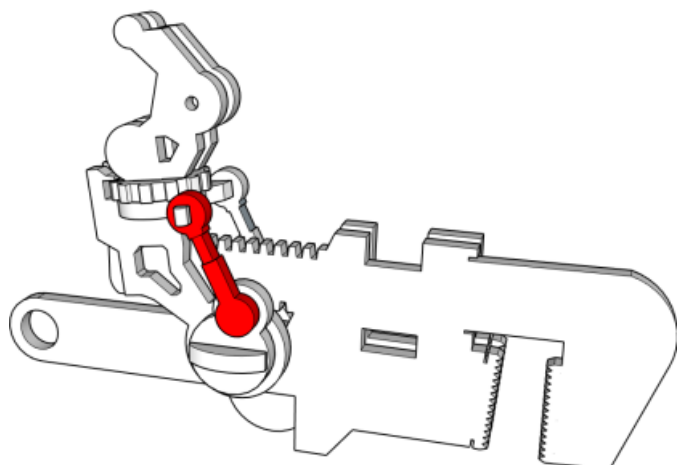
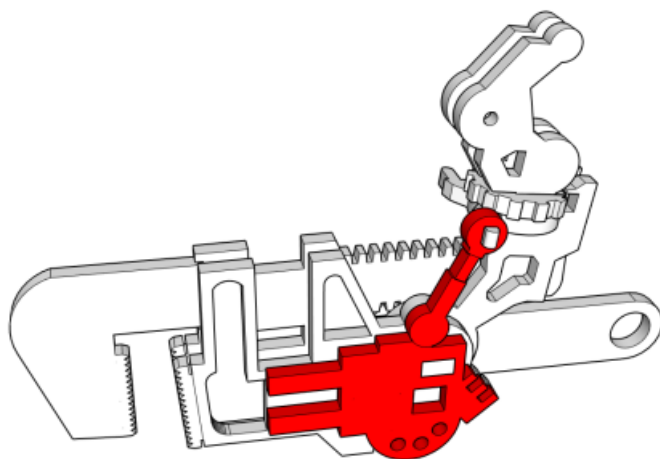
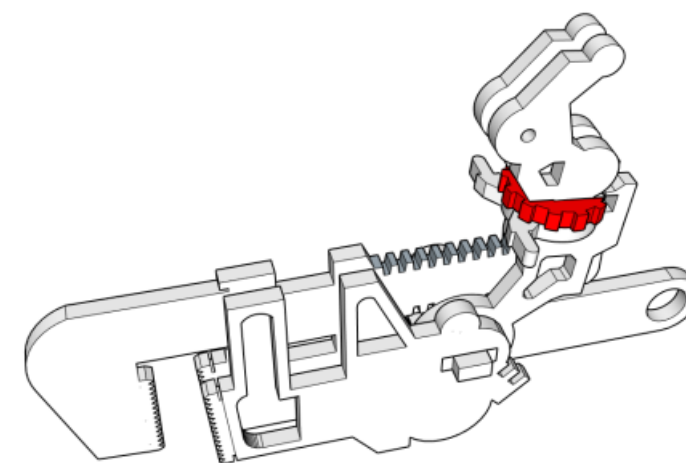


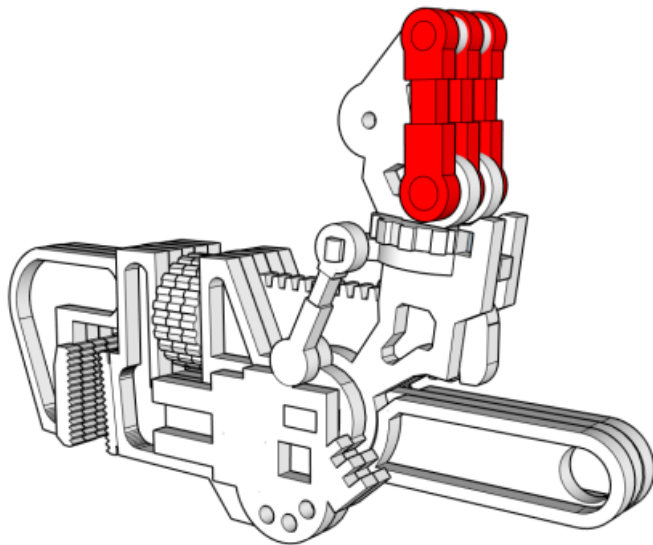
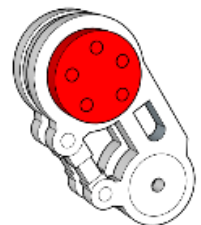
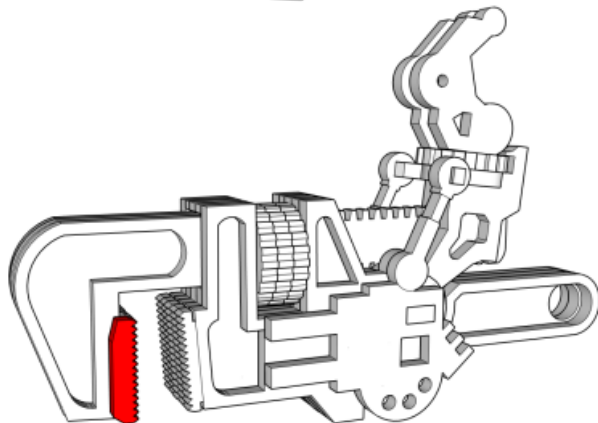
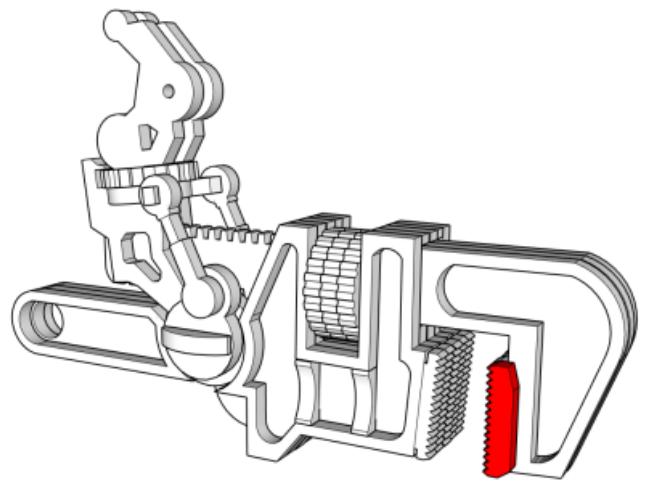
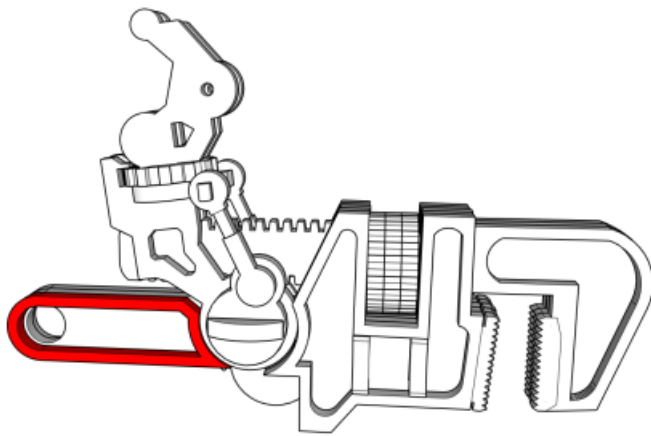
**Optional 3D  
print part**



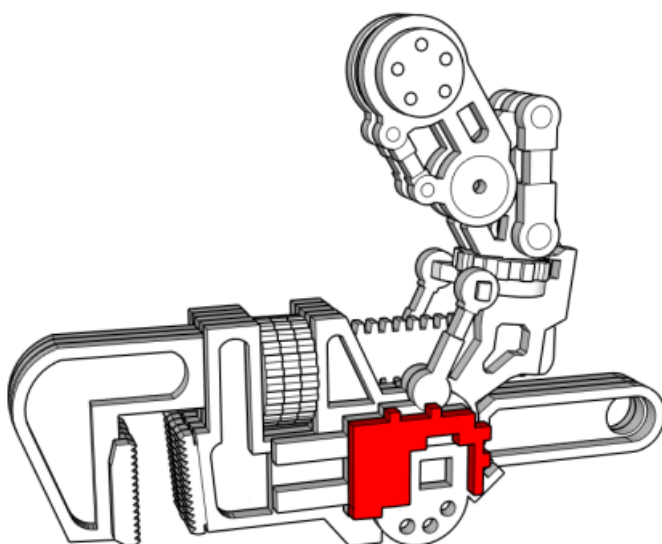
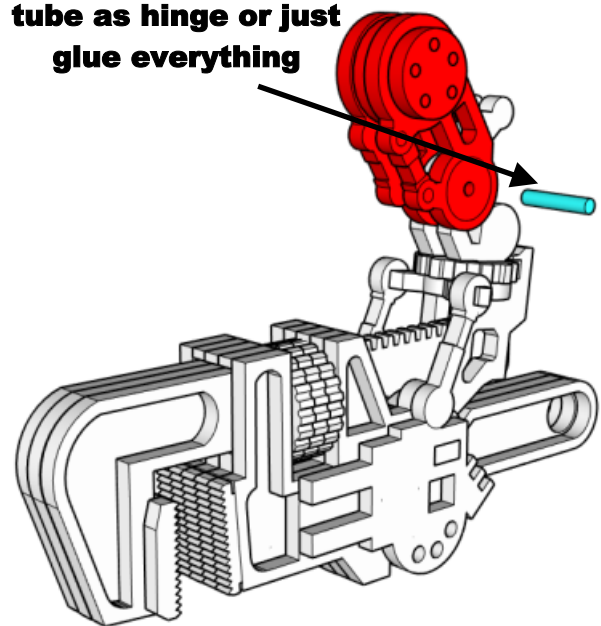
**Backpack  
Done!**

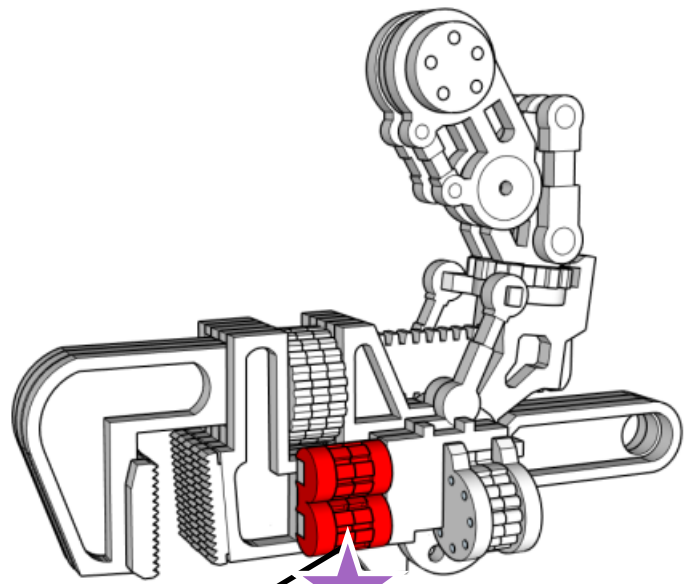
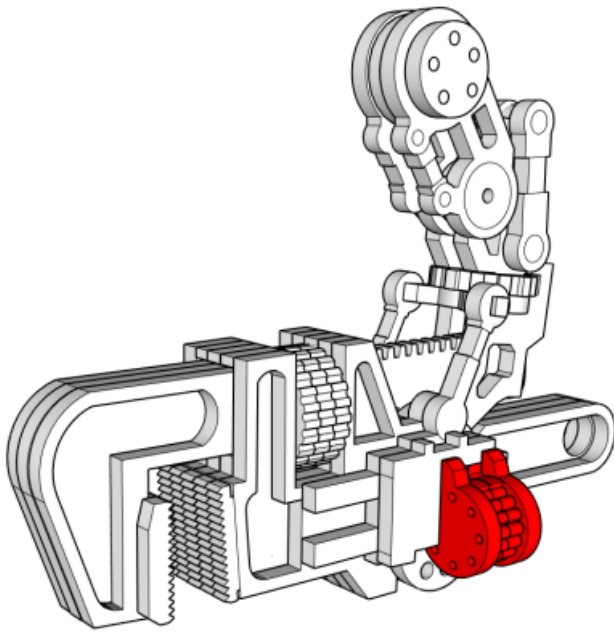




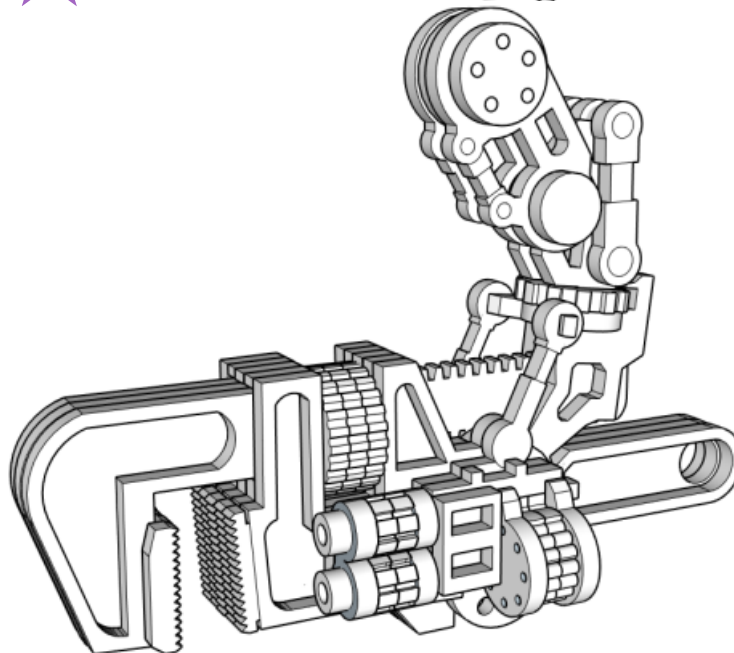
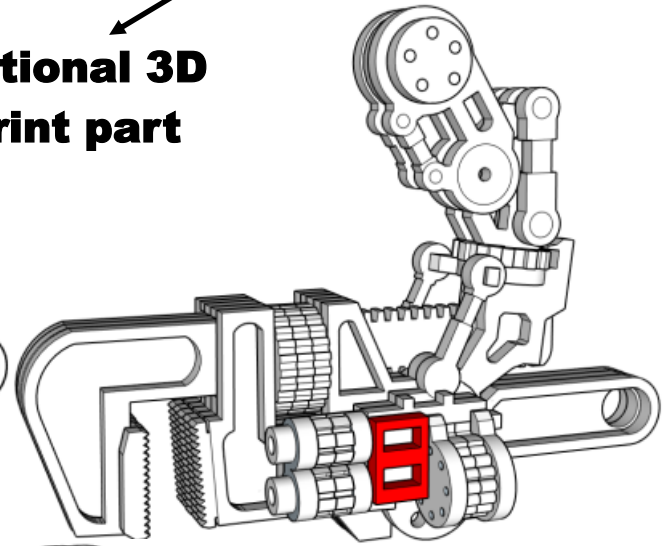
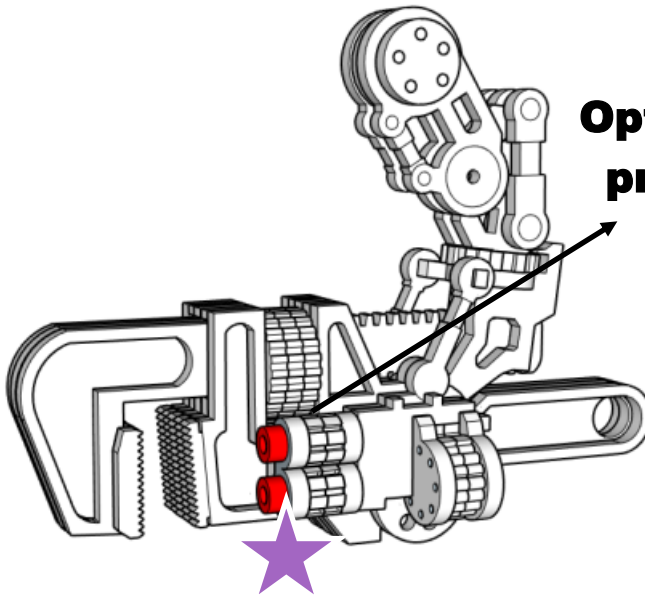


**OPTIONAL:**  
Use toothpick or 2mm  
tube as hinge or just  
glue everything

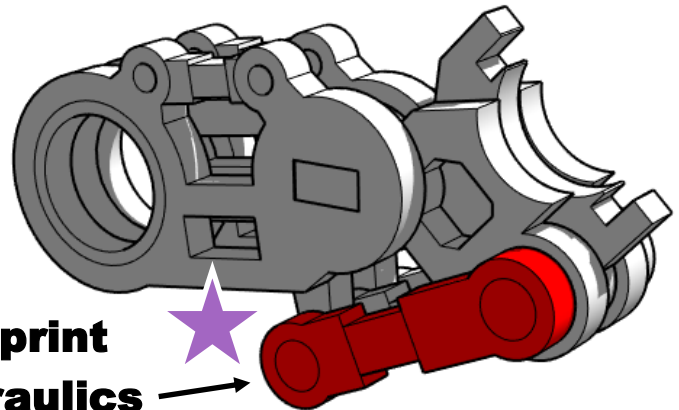
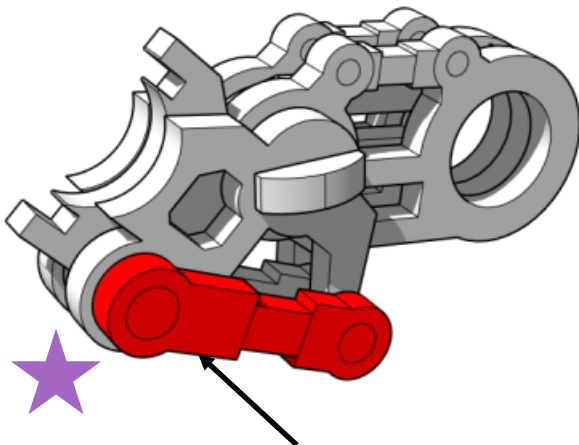
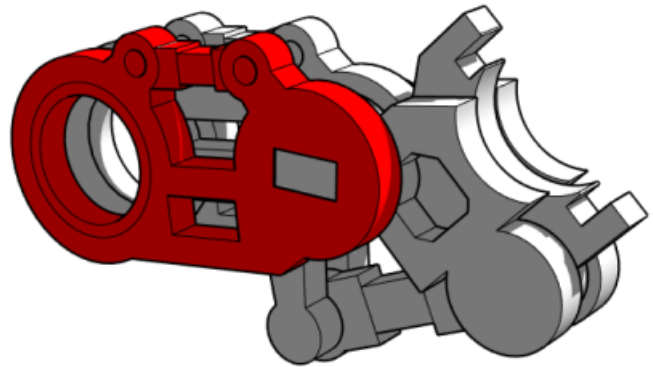
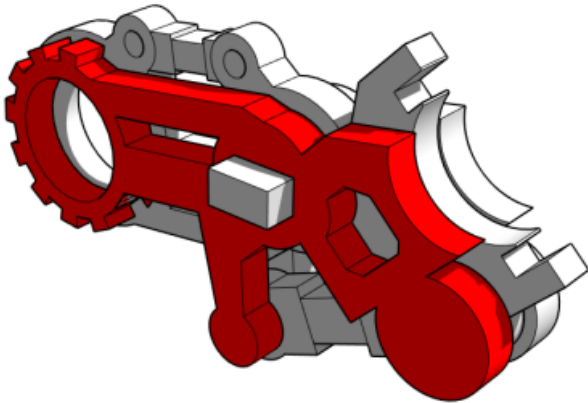
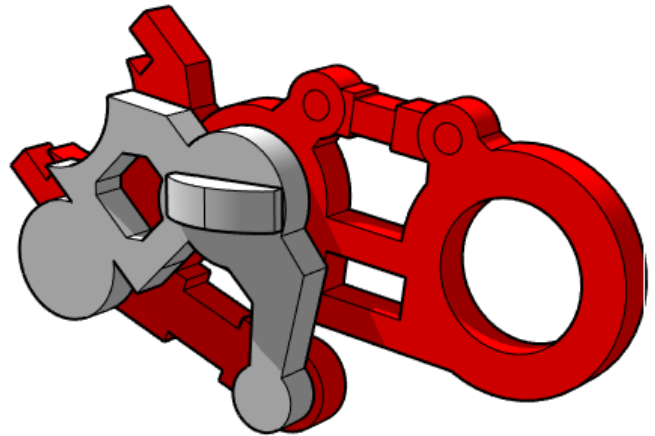
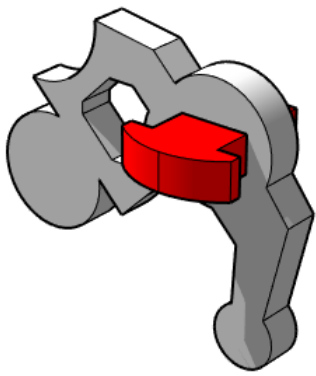




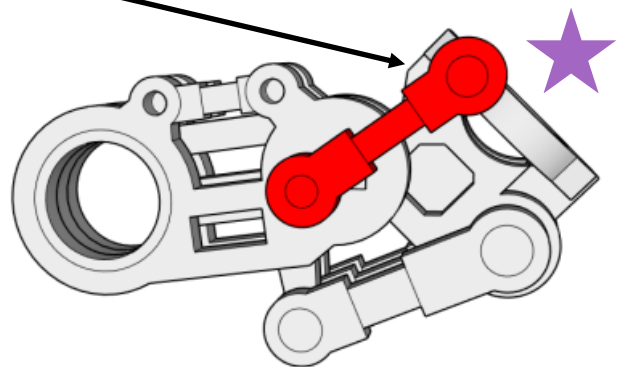
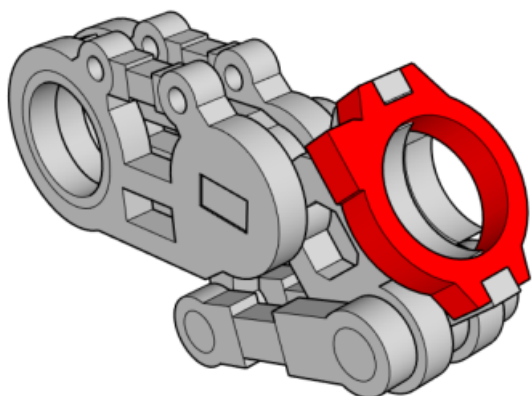
**Optional 3D  
print part**

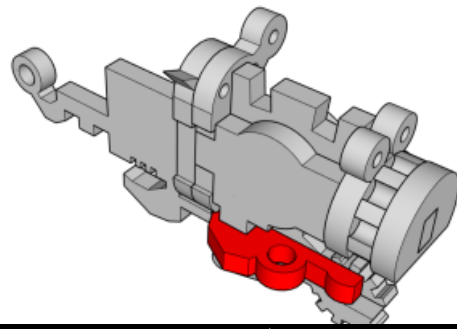
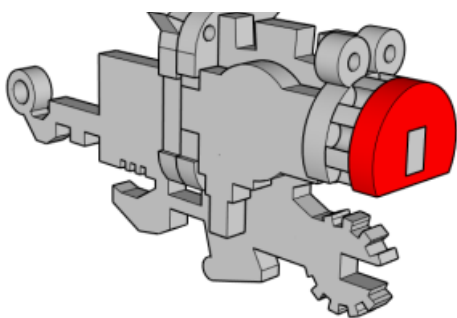
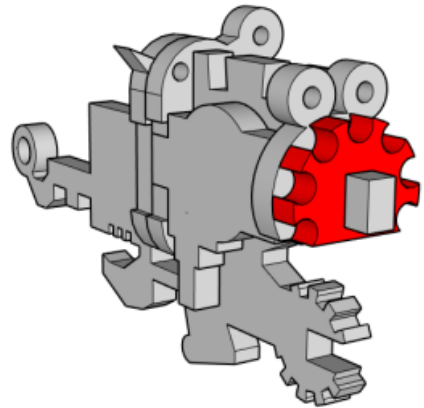
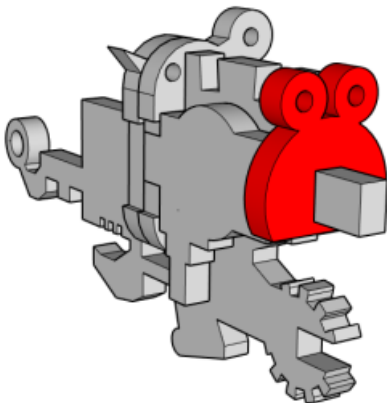
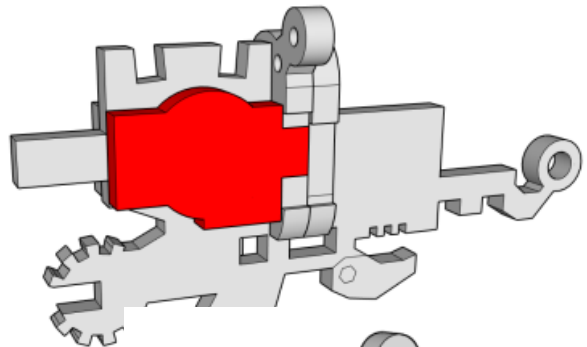
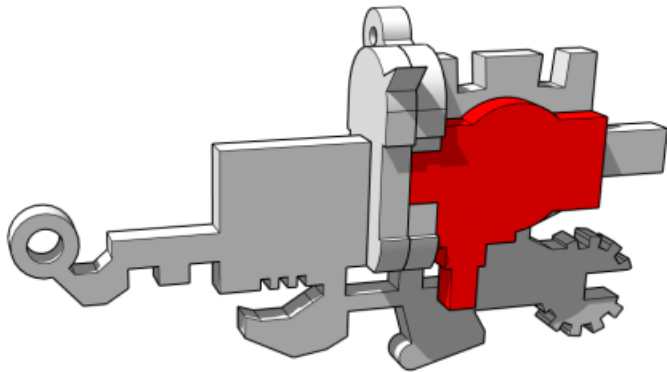
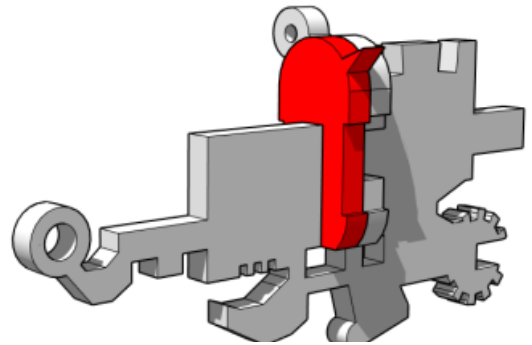
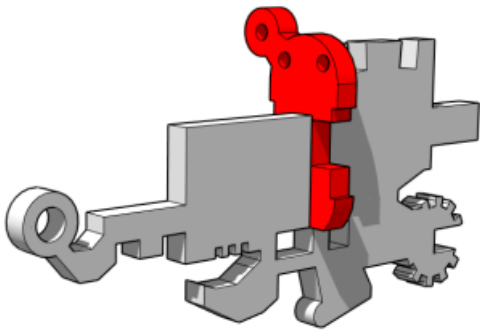


**Left arm  
done!**

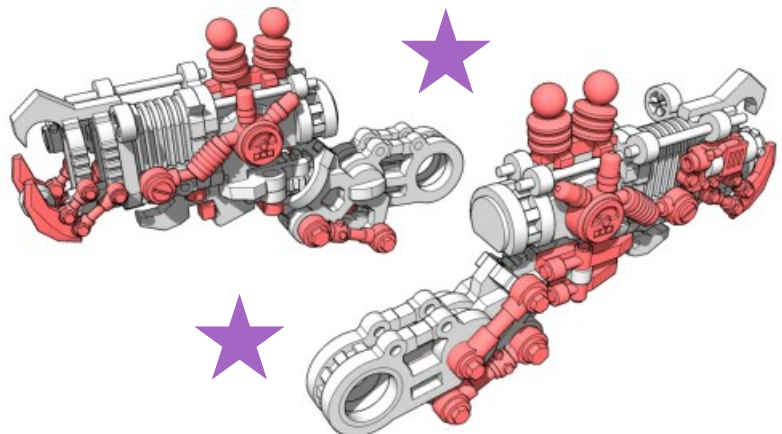


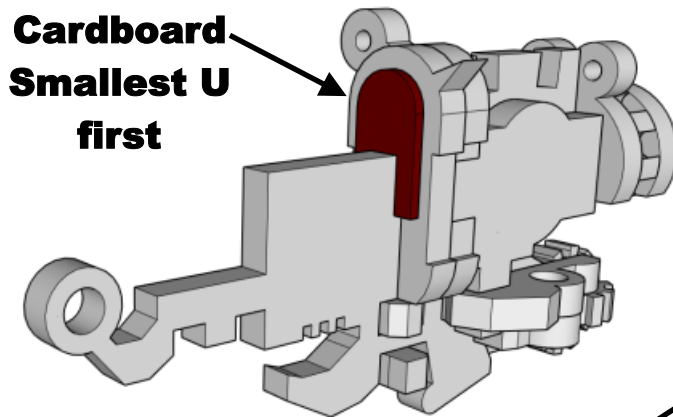
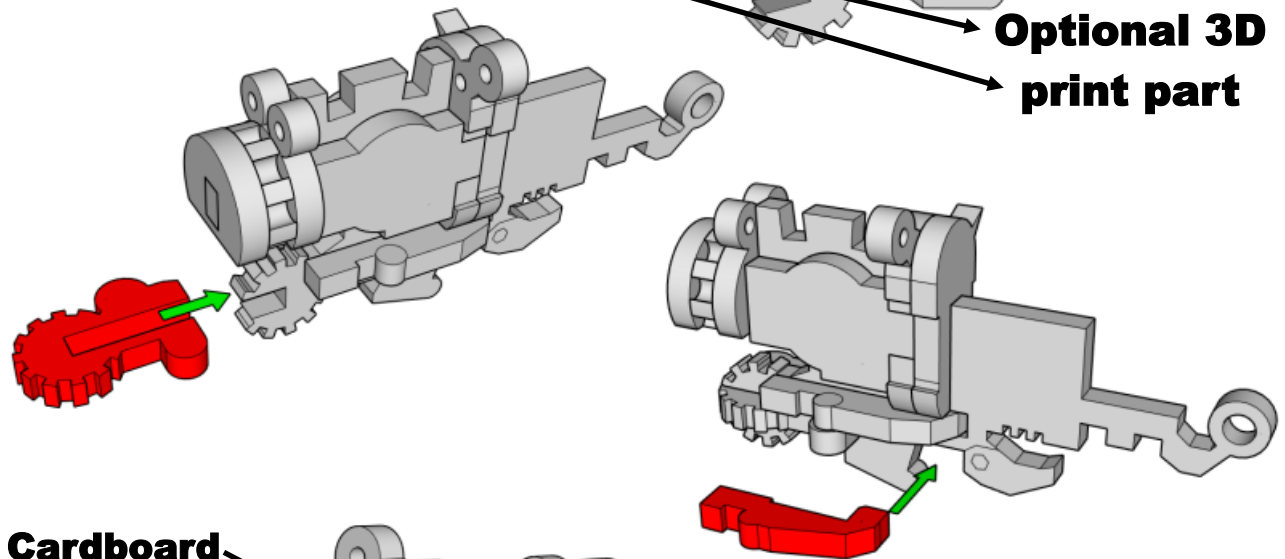
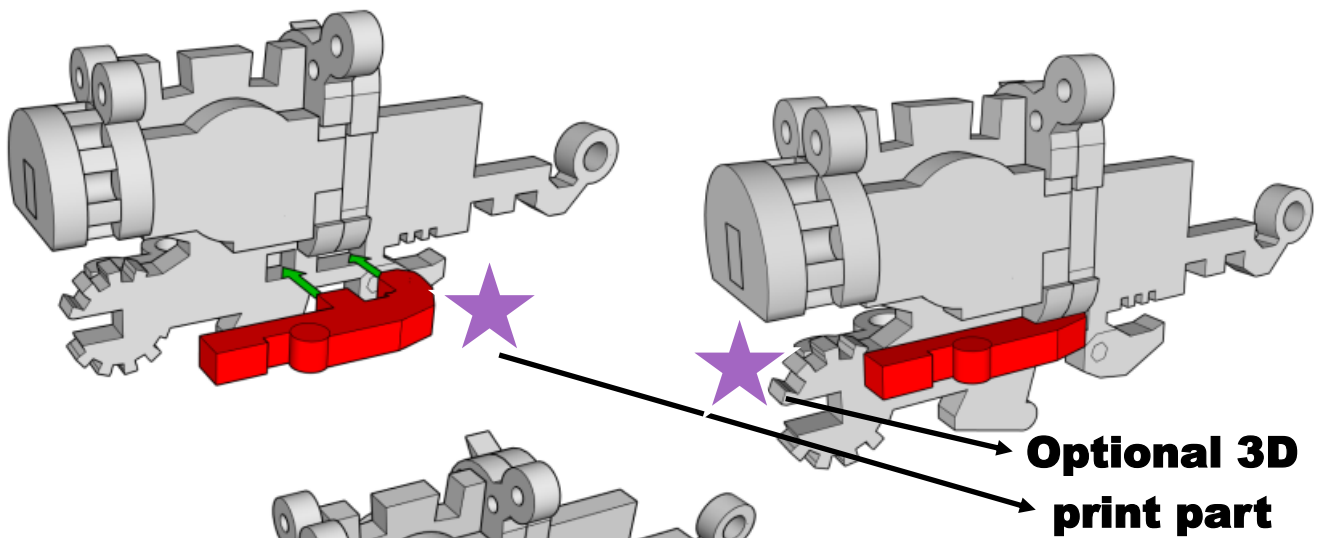
**Optional 3D print  
Parts for hydraulics**



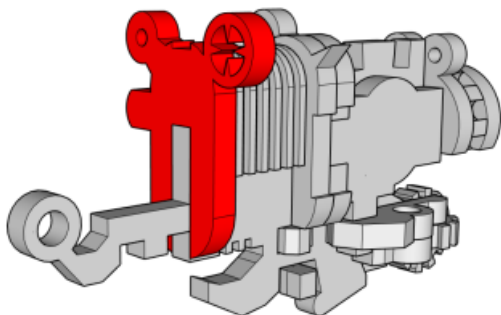
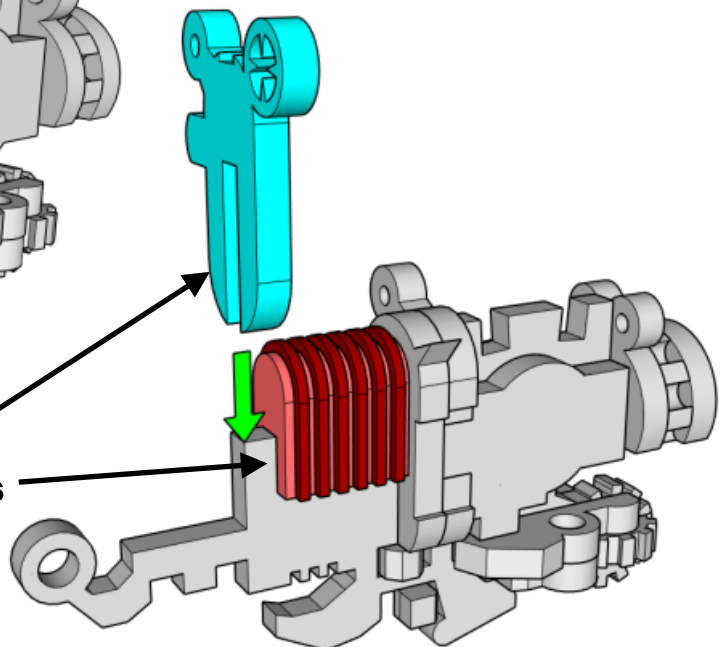


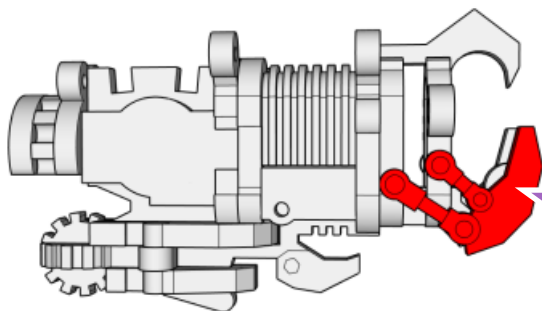
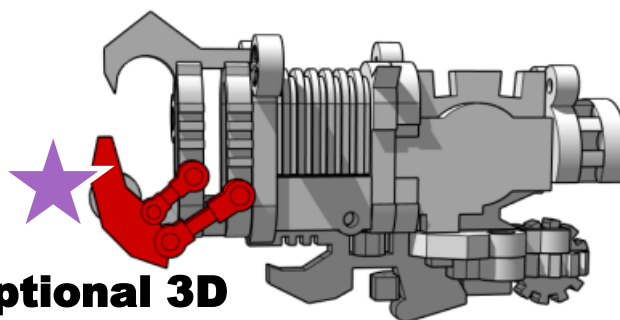
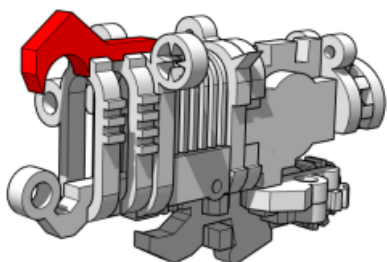
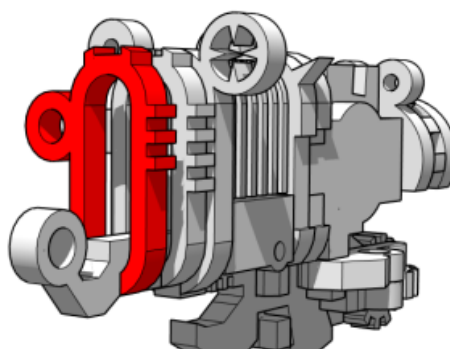
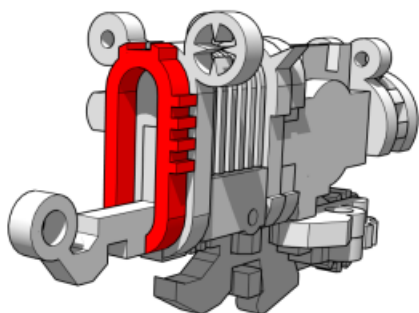
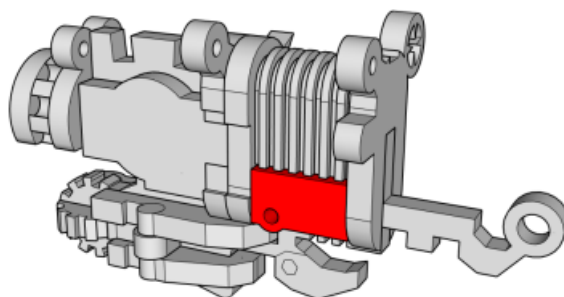
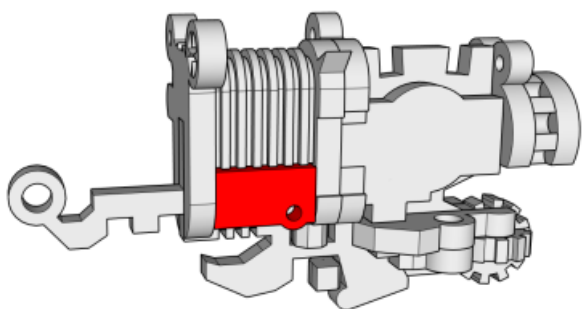
★ **NOTE: If you are using 3D printed pieces, this gun has a lot of replacement parts. Please study this image of where they go**



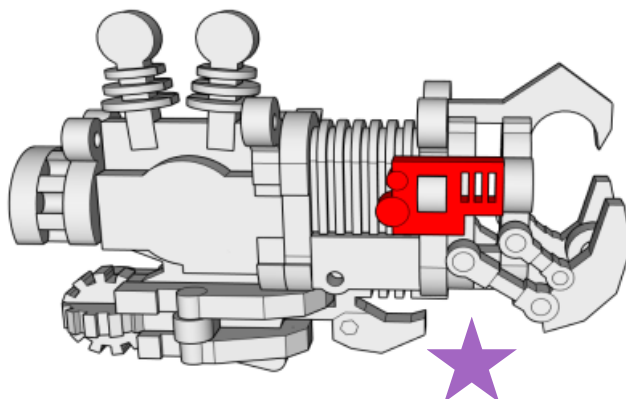
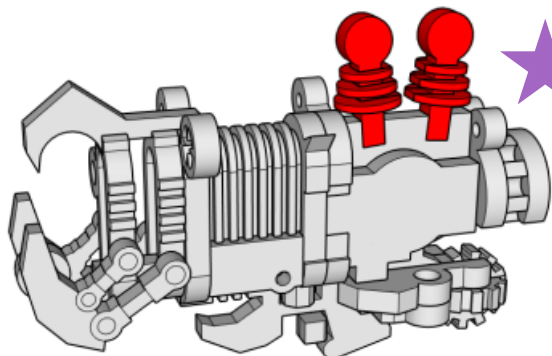


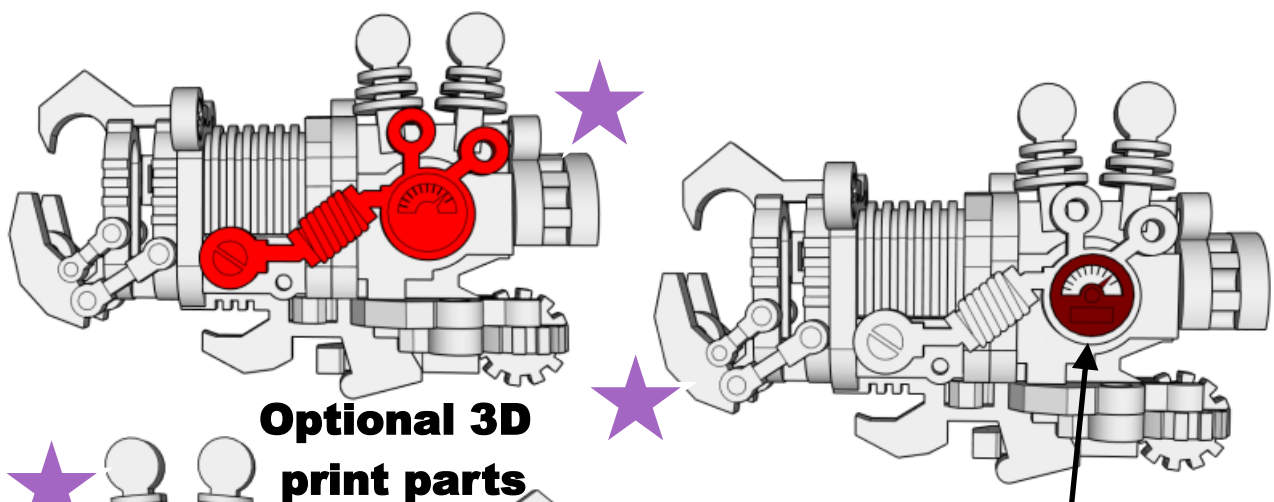
Alternate cardboard  
sizes until blue part sits  
flush at end





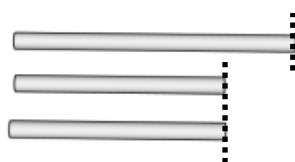
**Optional 3D  
print parts**



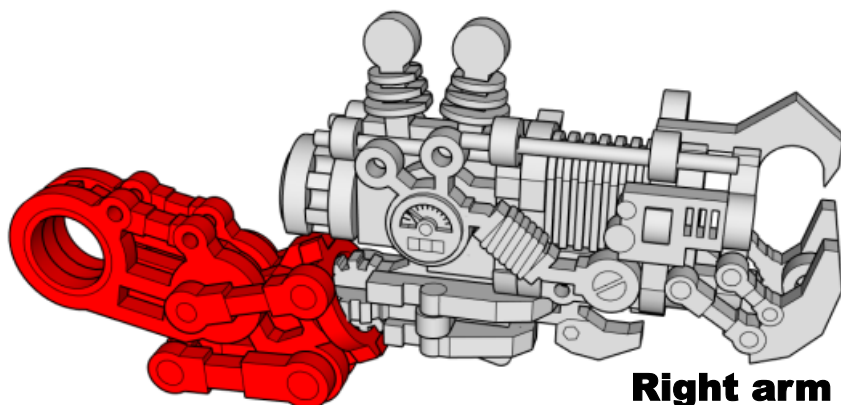
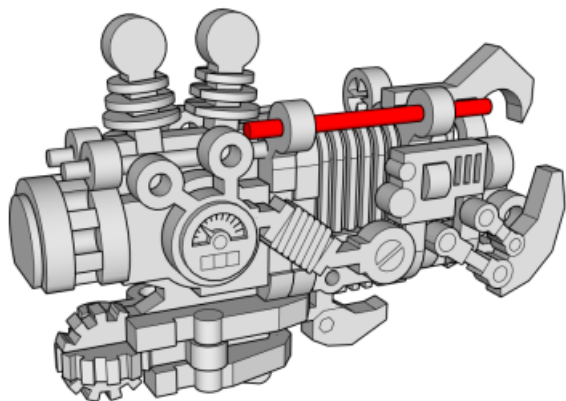
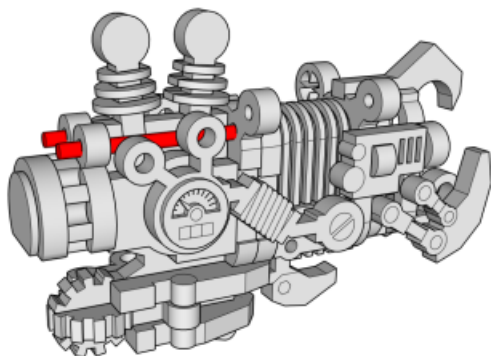
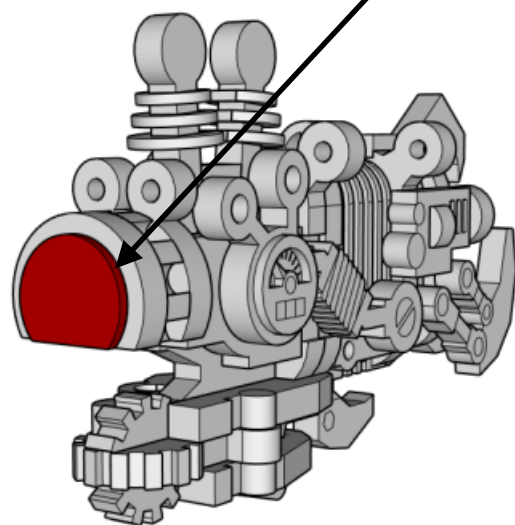


**Optional 3D  
print parts**

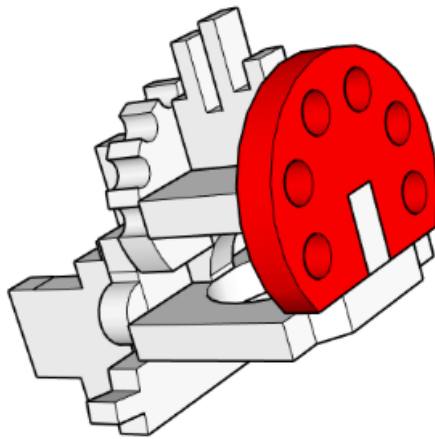
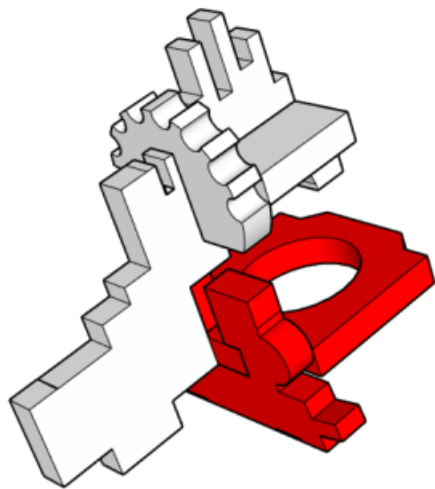
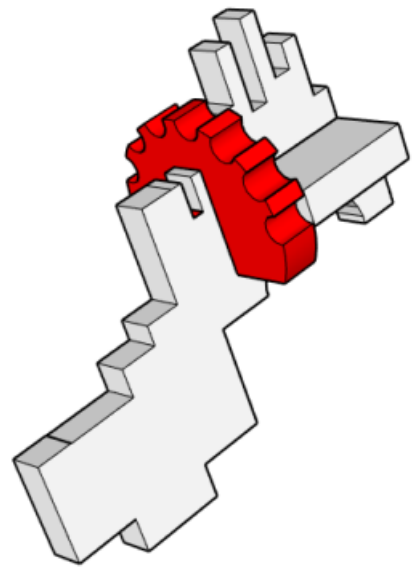
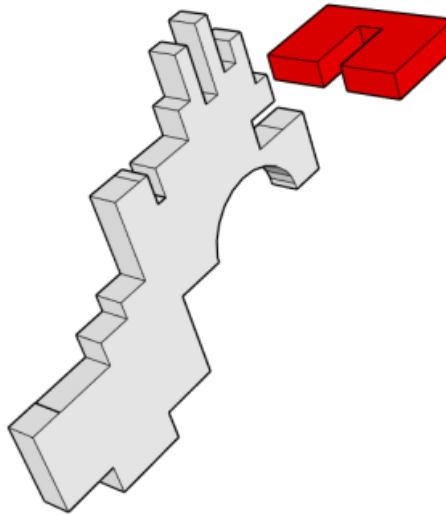
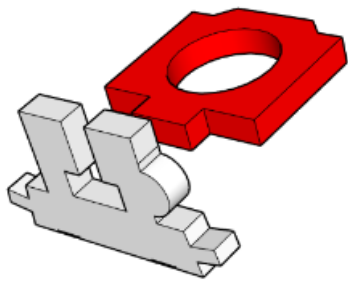
**Cardboard**



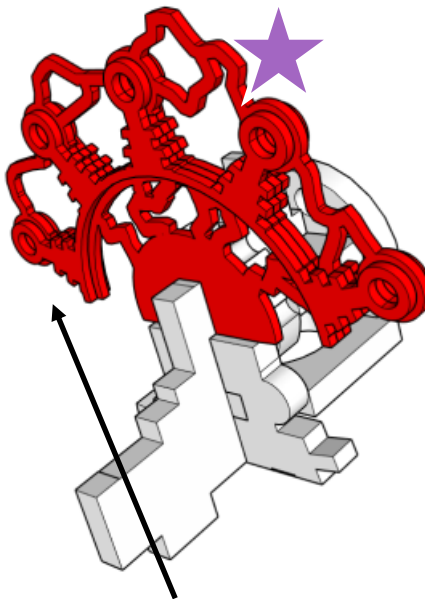
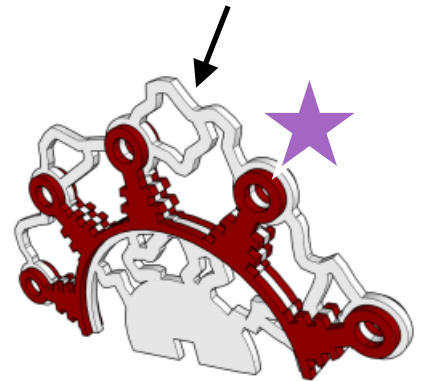
**Cut toothpicks**  
**2 x 28mm**  
**1 x 30mm**



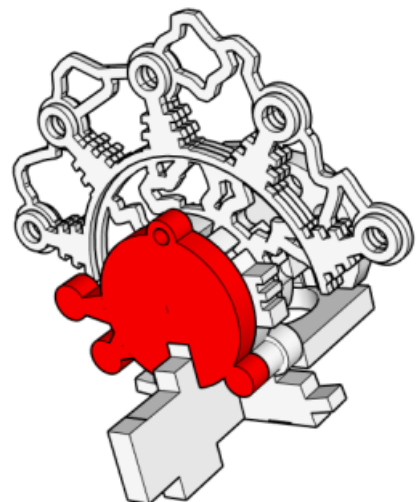
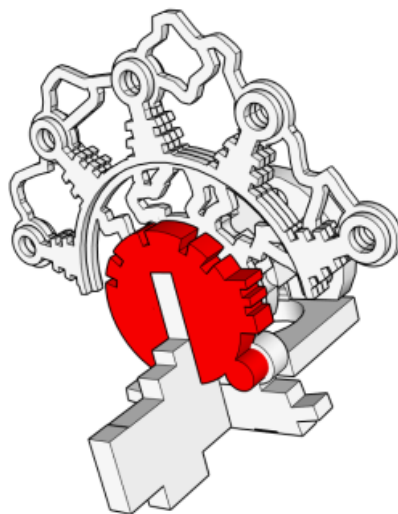
**Right arm done!**

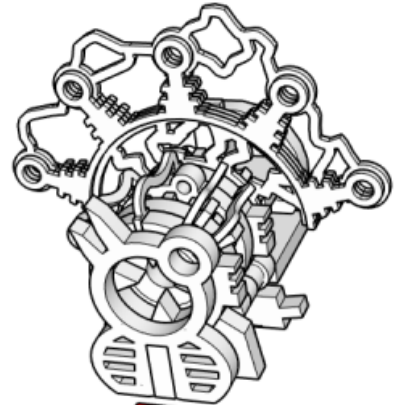
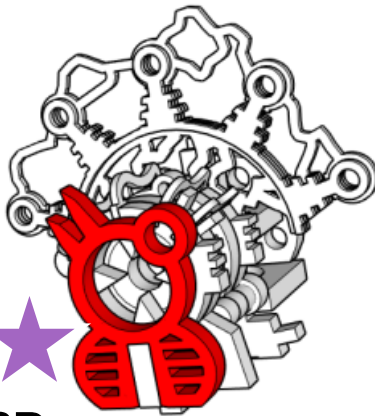
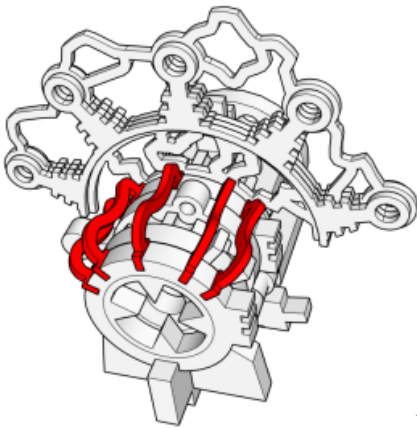
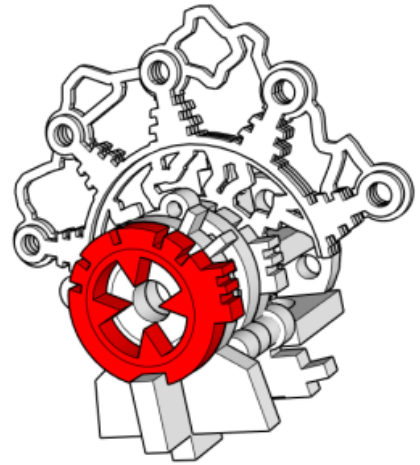
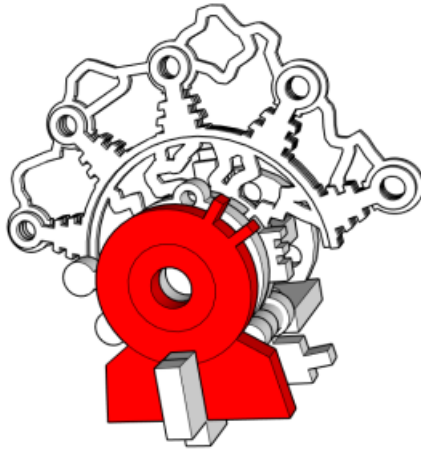
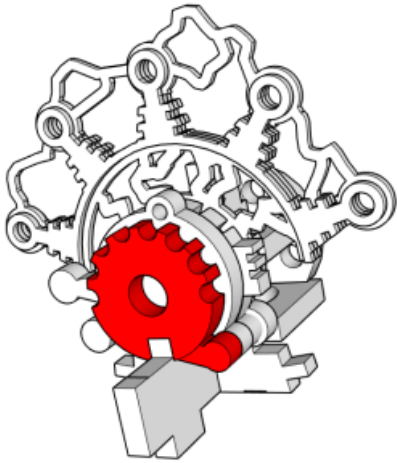


**3 x Cardboard**

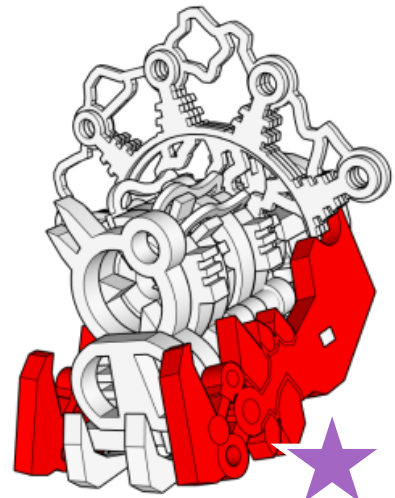
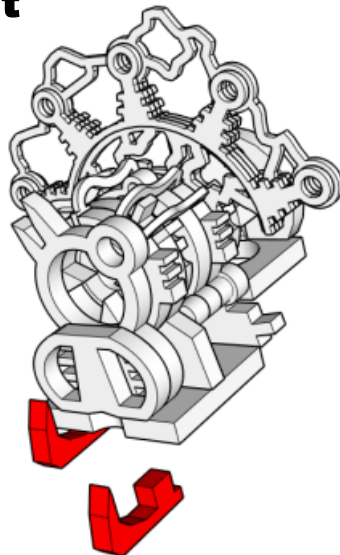
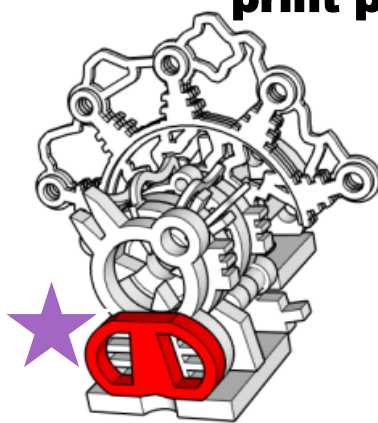


**Optional 3D  
print part**

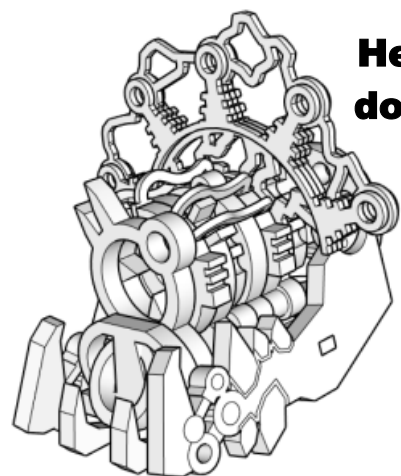
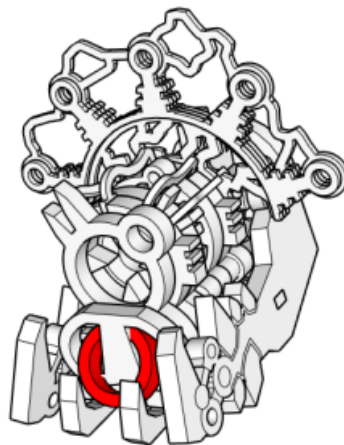
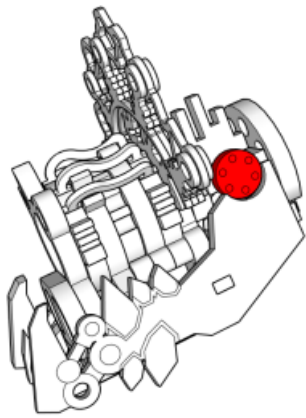




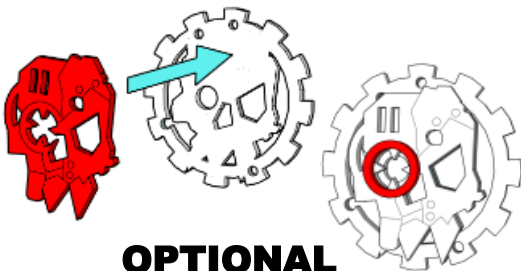
**Optional 3D  
print part**



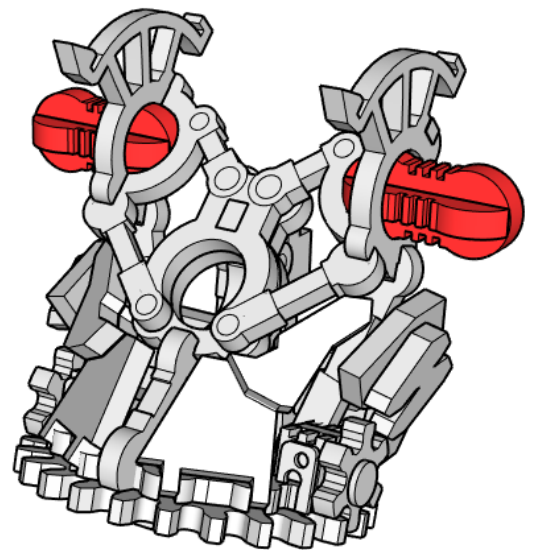
**Optional 3D  
print parts**



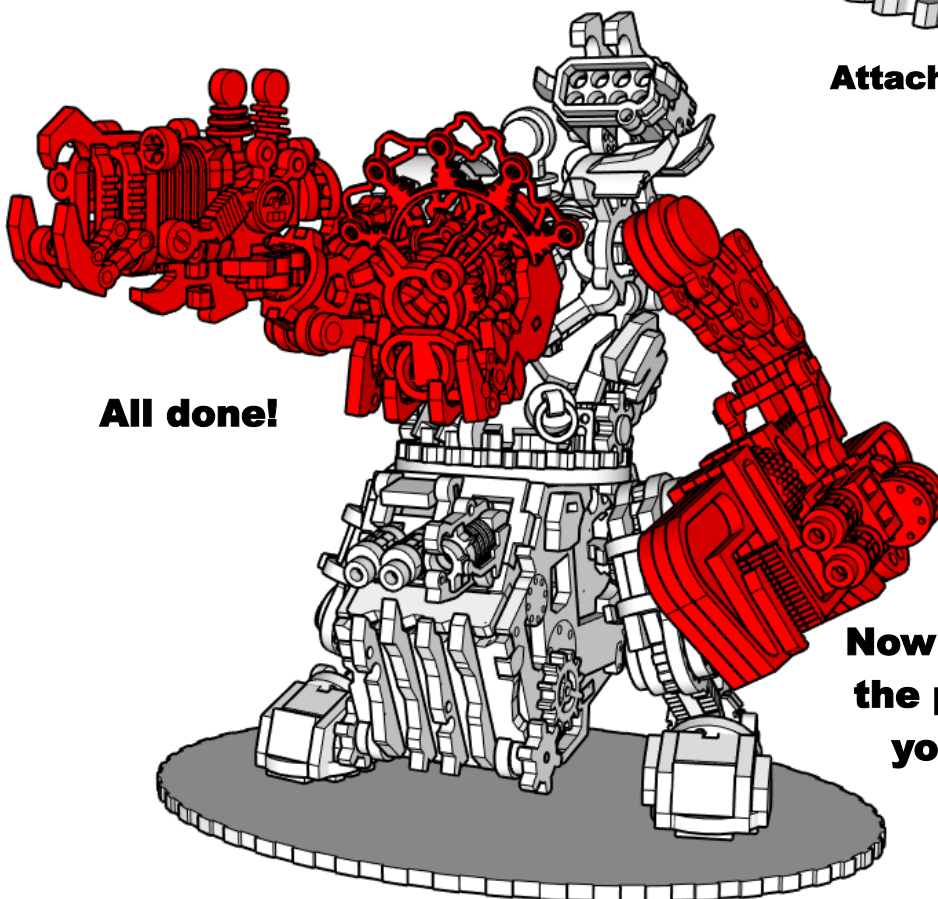
**Head  
done!**



**OPTIONAL  
cardboard icon can be  
stuck on your model  
wherever you like**



**Attach arms and head with  
peanut joints**



**All done!**

**Now pose all  
the parts as  
you like!**