

# MINIATURE SCENERY

## E.A.G.L.E. BUS

[EFFICIENT ANTI-GRAV LEARNERS' EXPRESS BUS]



MINIATURE SCENERY IS DESIGNED FOR 28MM MINIATURES,  
IDEAL FOR GAMERS AND COLLECTORS



FOR DETAILED, EASY TO FOLLOW INSTRUCTIONS VISIT  
[WWW.MINIATURESCENERY.COM](http://WWW.MINIATURESCENERY.COM)



Contents may contain small parts. Not suitable for children under 6 years old. The exclusive copyright on the model designs and components within this case is the property of Miniature Scenery, 2016. All rights reserved.



# MINIATURE SCENERY

## INSTRUCTIONS

### EAGLE BUS

#### Preparation

#### PREPARATION:

you will need:

- Cutting mat or something to protect your table.
- PVA/Wood glue or superglue if you prefer.
- Small file or sand paper.
- Small blade / hobby knife

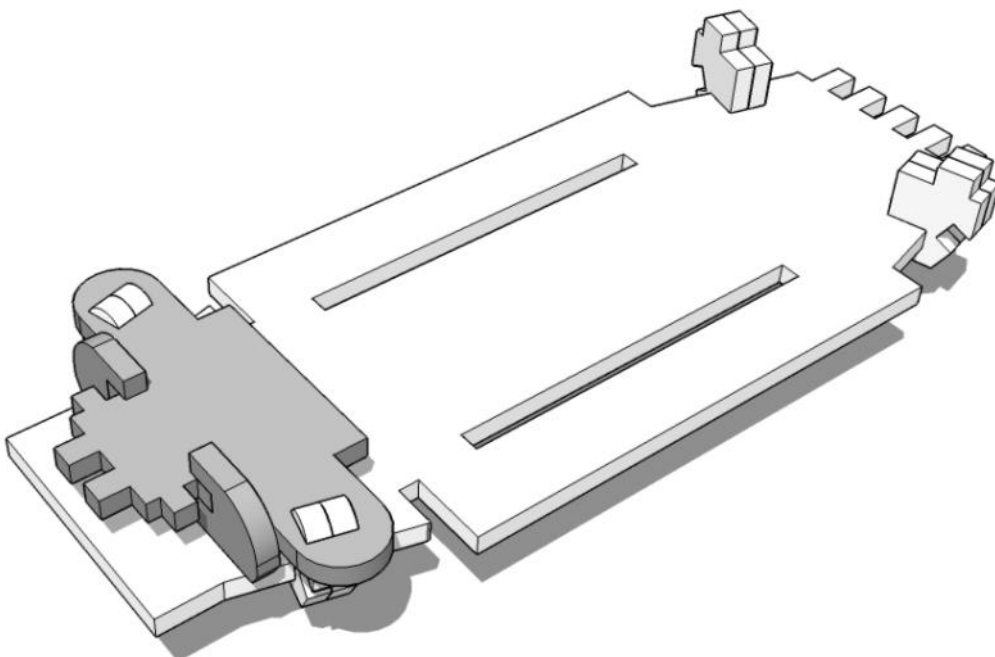
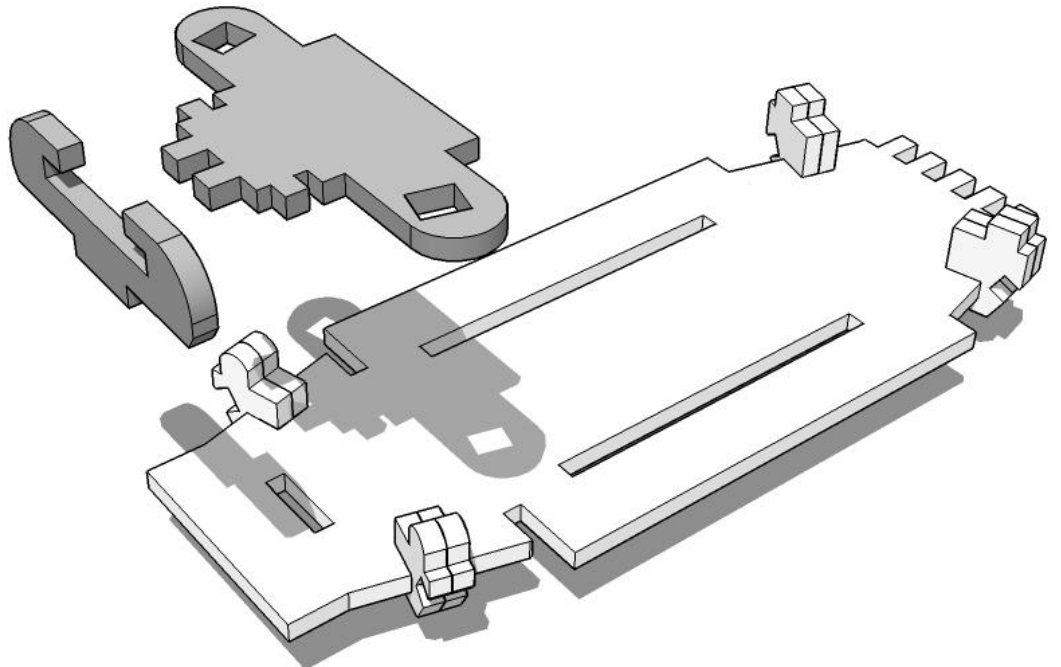
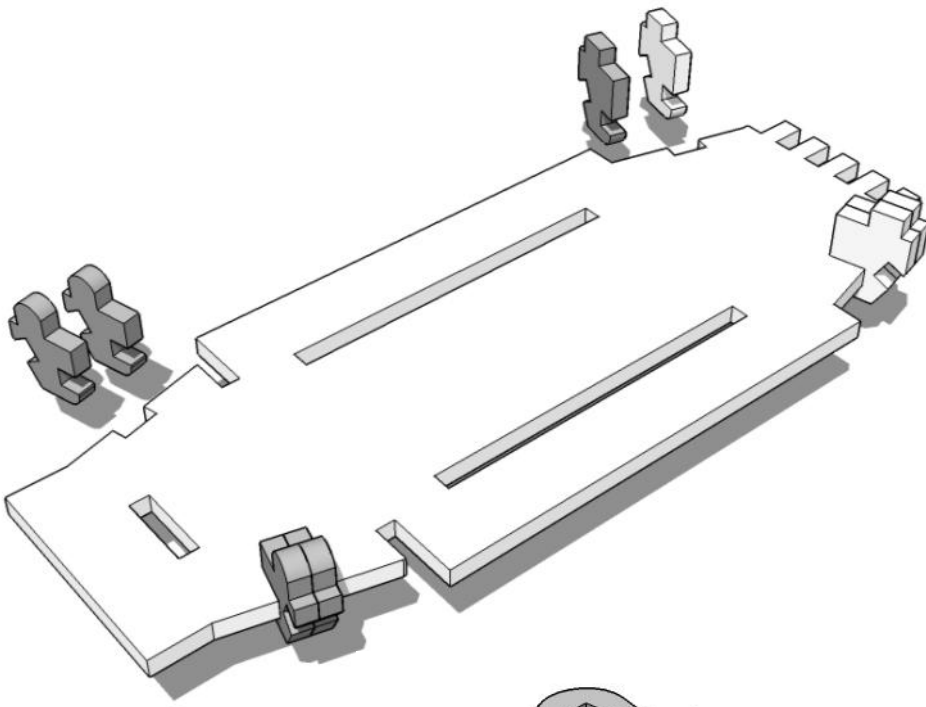
#### Preparation

#### General Process

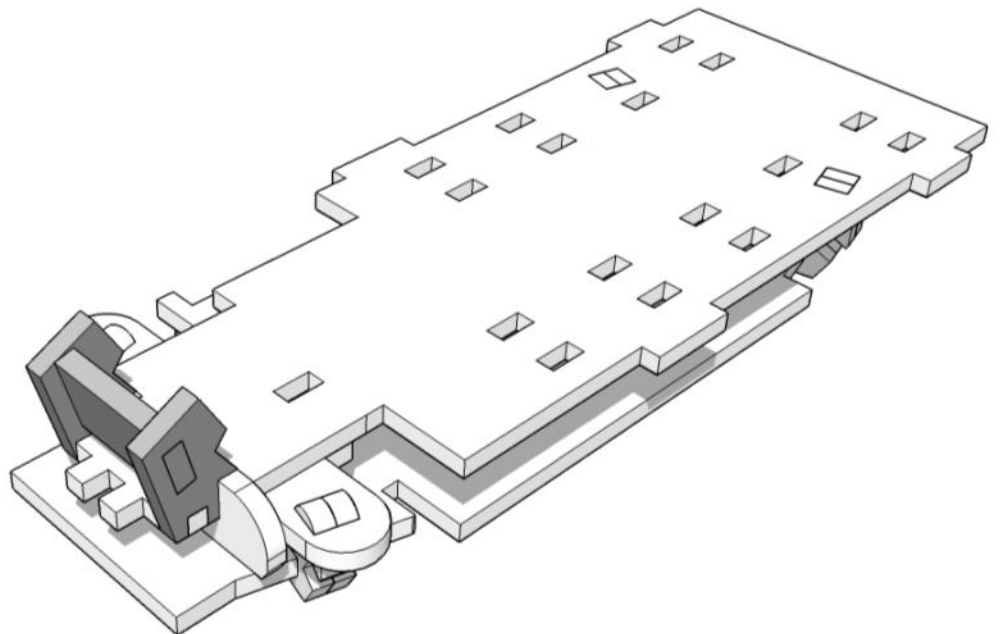
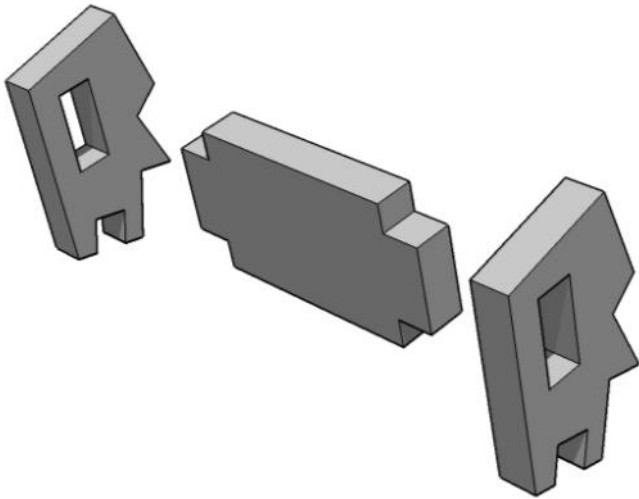
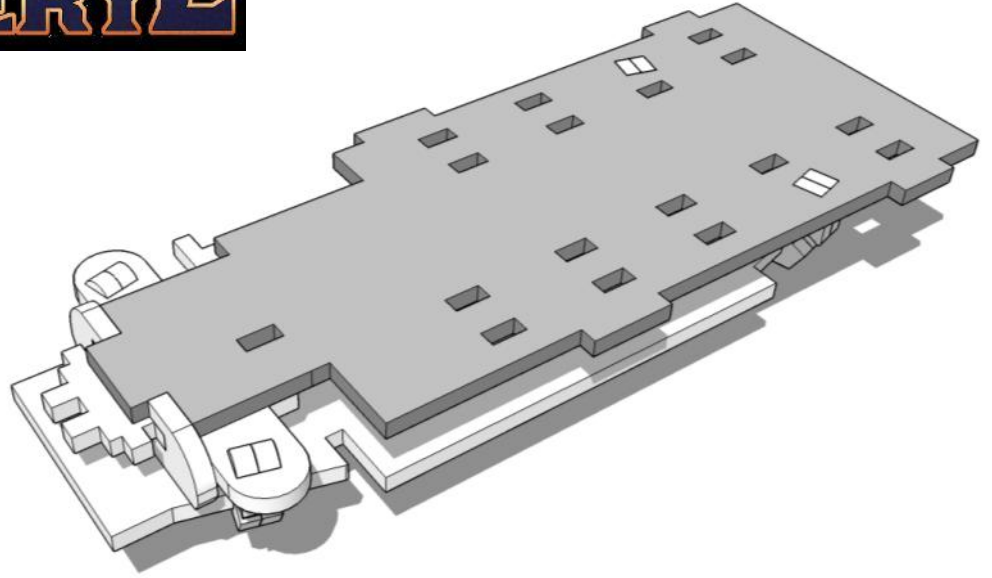
#### General Process GENERAL PROCESS: GENERAL PROCESS:

- Clear plenty of table space, you will need it.
- Parts should remove easily from the board by pressing through and popping them out. It's a good idea to cut through the tiny joins first though, and some parts (particularly smaller, more detailed parts) may need more careful persuasion.
- Use file or sand paper to remove the small bur caused by the connection to the frame.
- It's a good idea to familiarise yourself with how the pieces fit together before gluing.
- Slot the parts together as shown by the pictures below, applying glue wherever there is a connection. (unless shown otherwise)
- Parts may be a very tight fit, slight trimming or sanding of parts may be needed for ease of assembly.

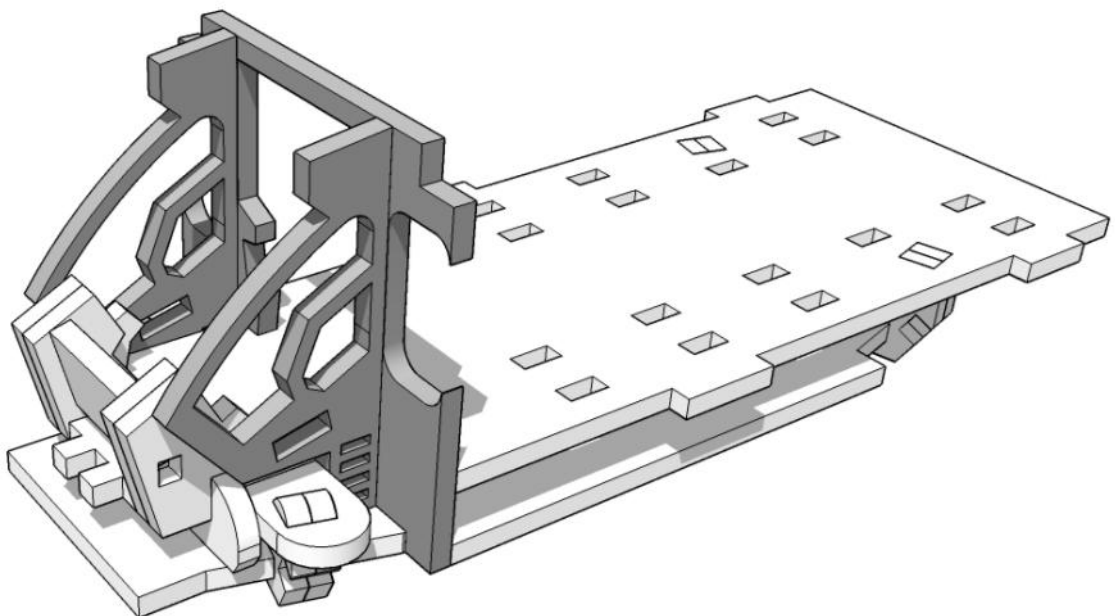
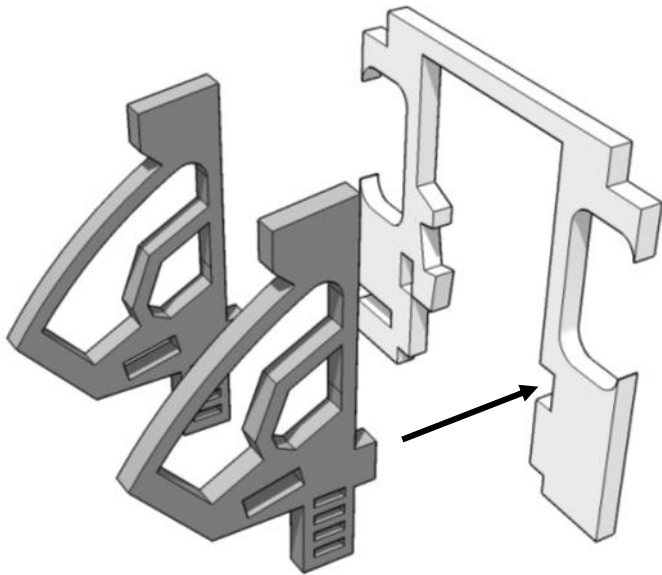
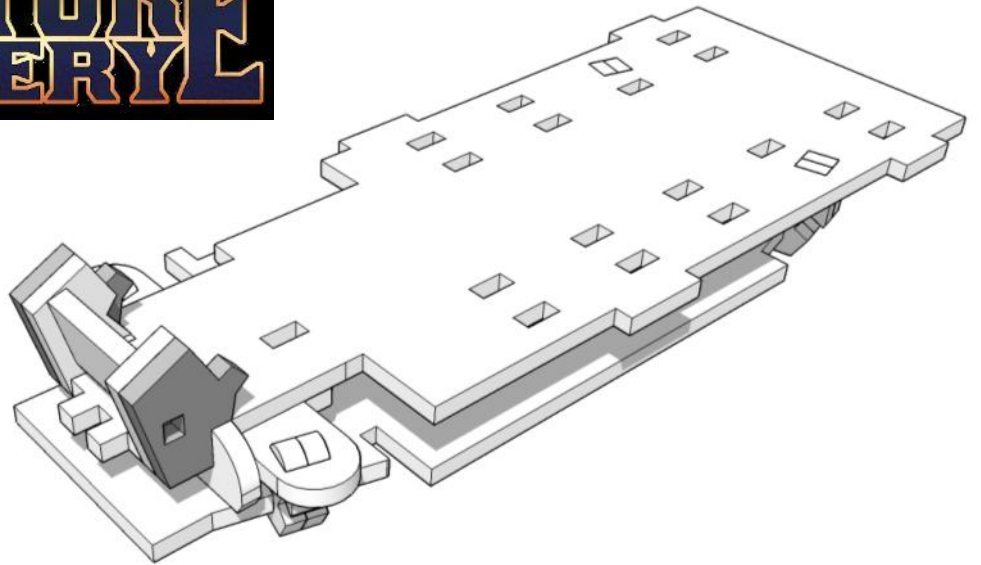




# MINIATURE SCENERY

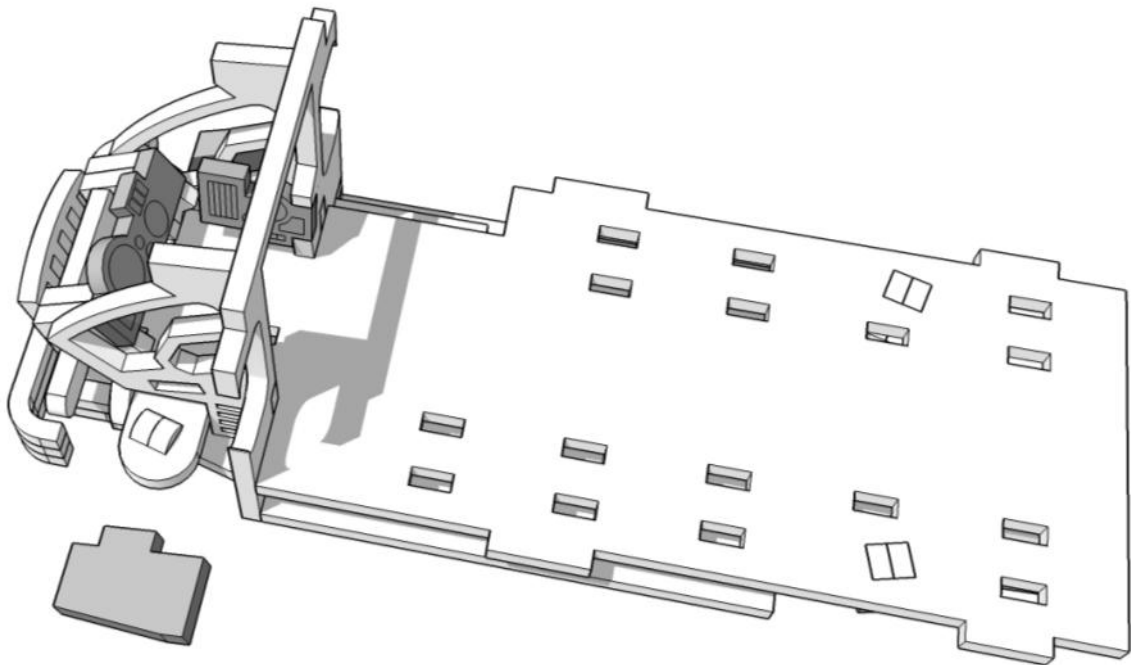
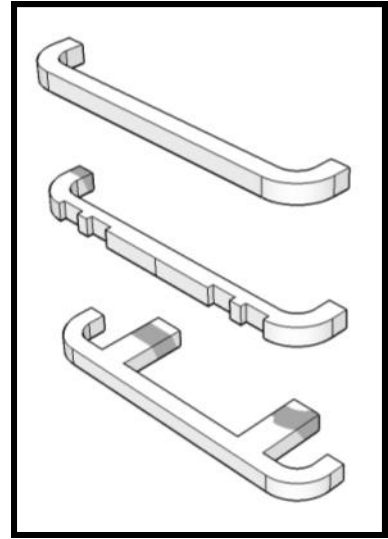
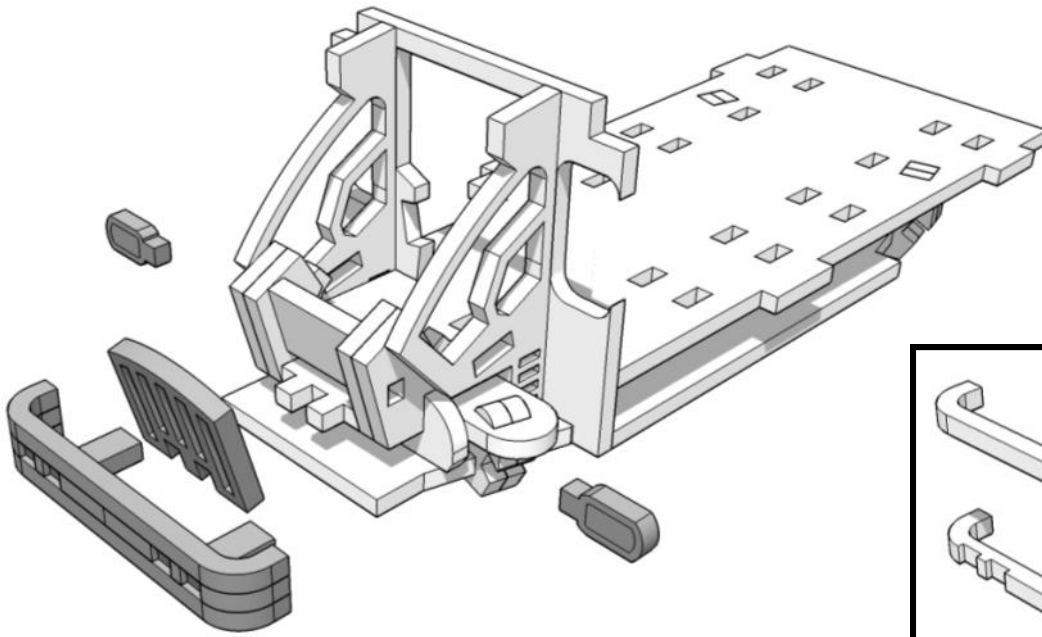


# MINIATURE SCENERY

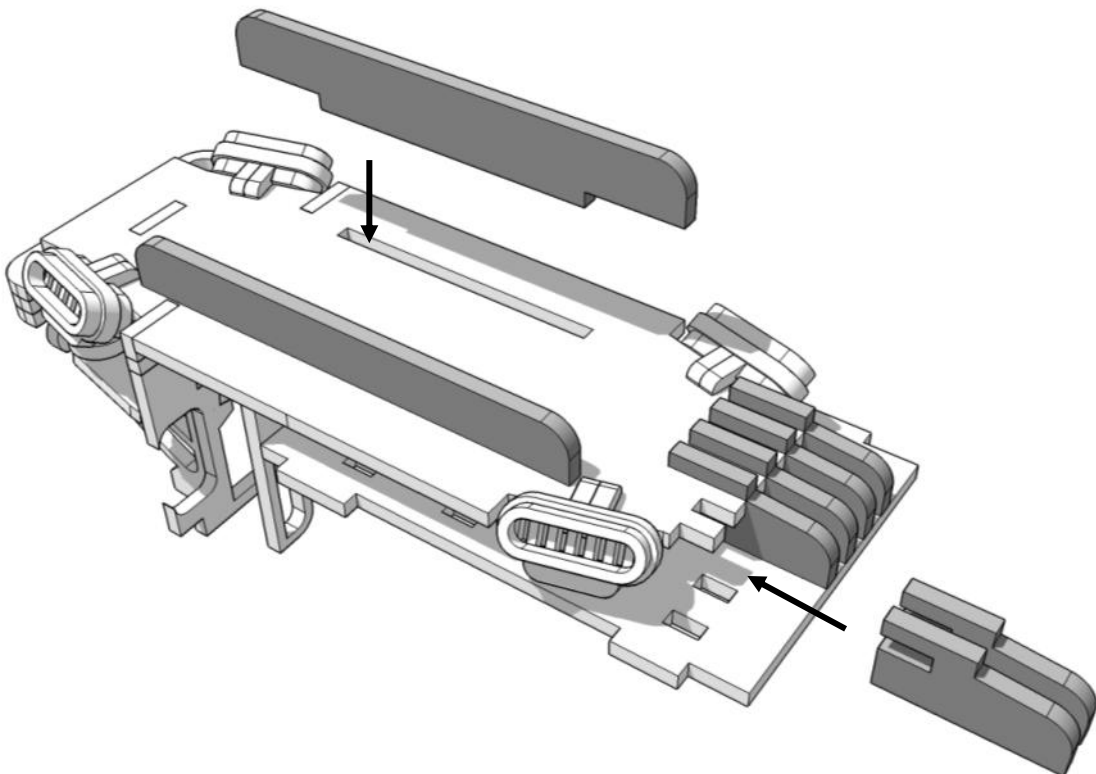
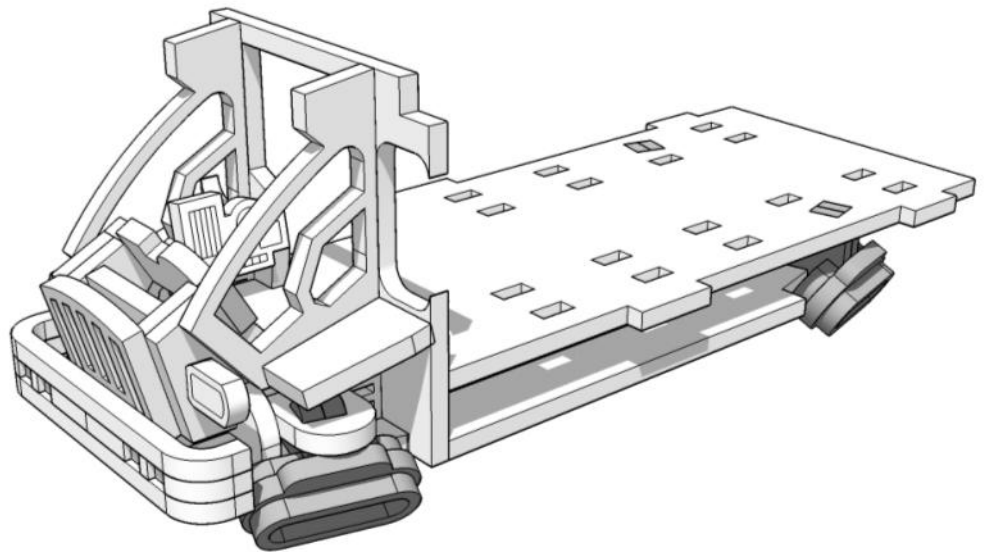
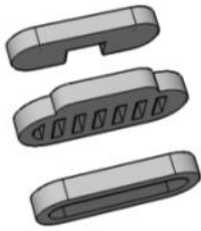
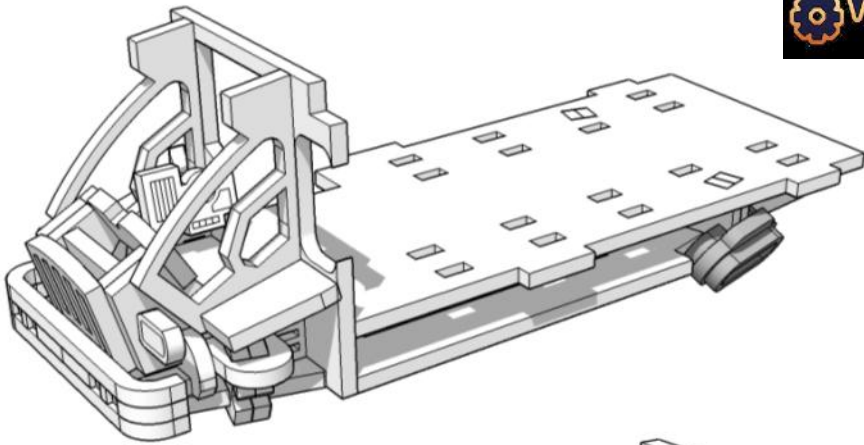


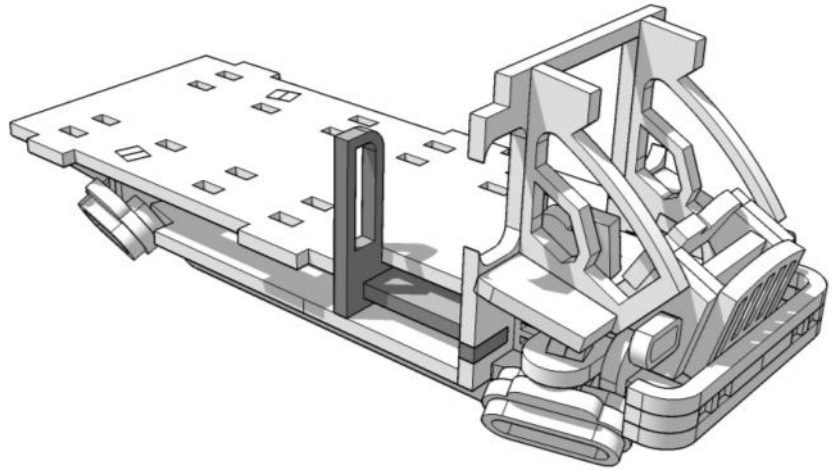
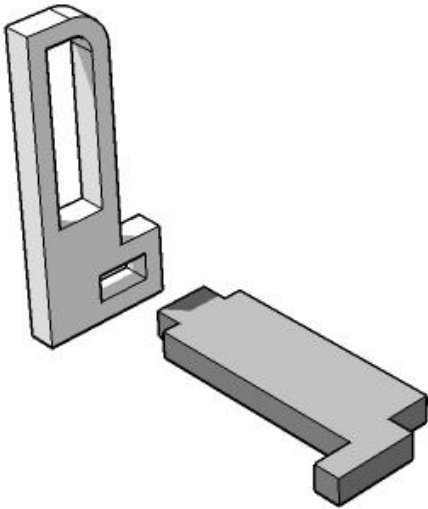


# MINIATURE SCENERY

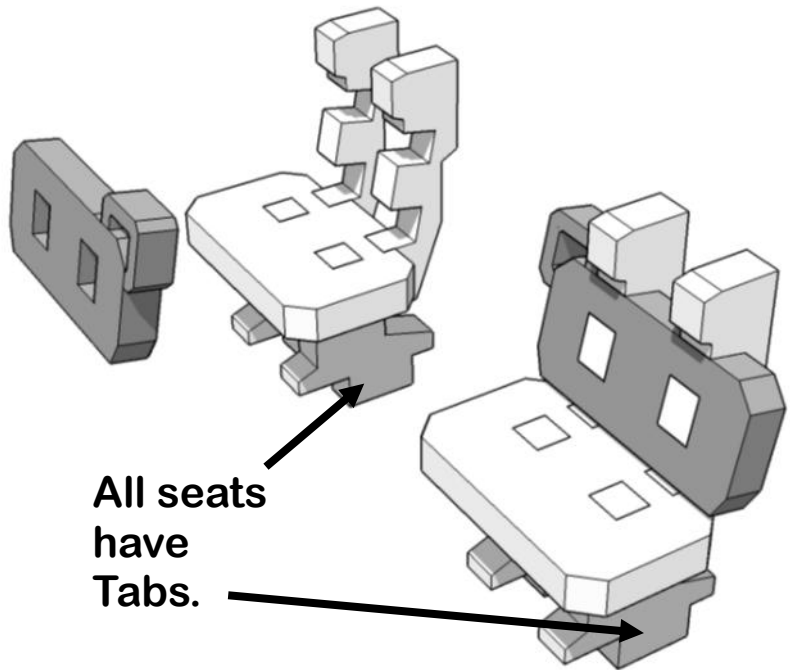


# MINIATURE SCENERY

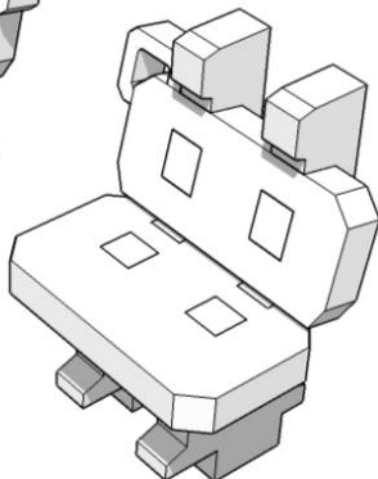
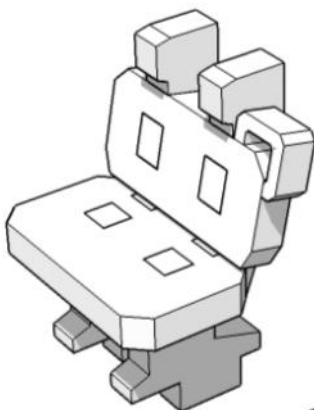




**READ CAREFULLY  
PAGES 8, 9 and 10 TO  
FAMILIARISE YOUR-  
SELF WITH THE  
SEATS.**



**Make 3**

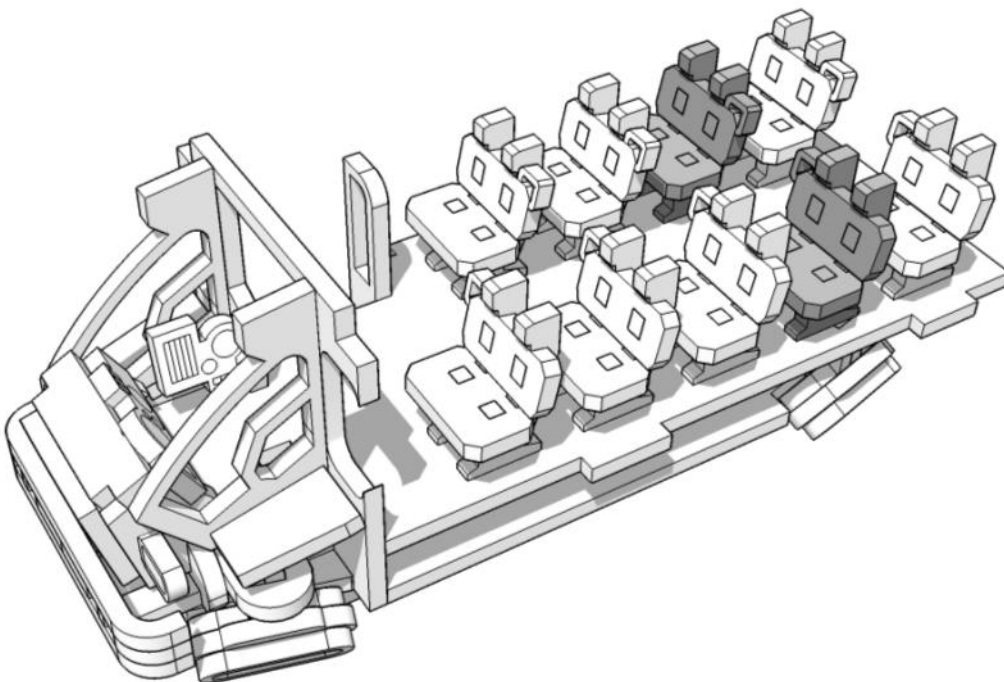
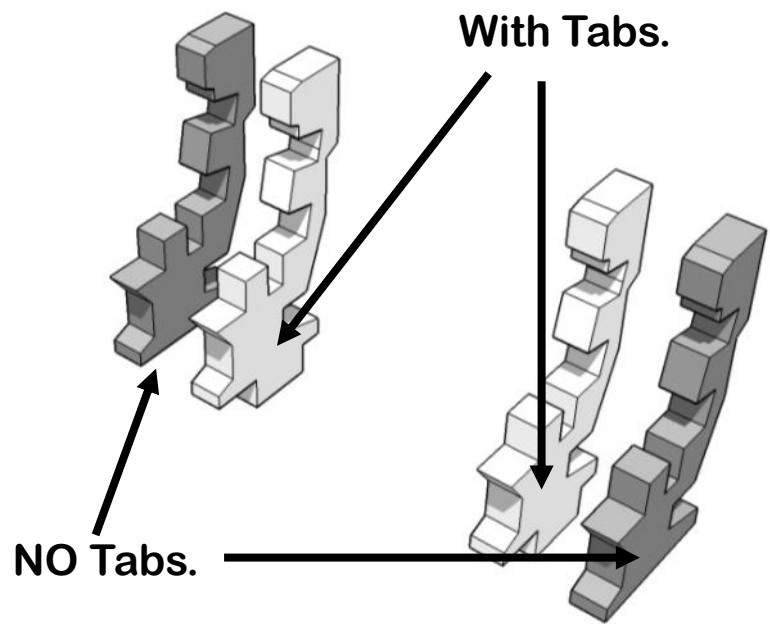
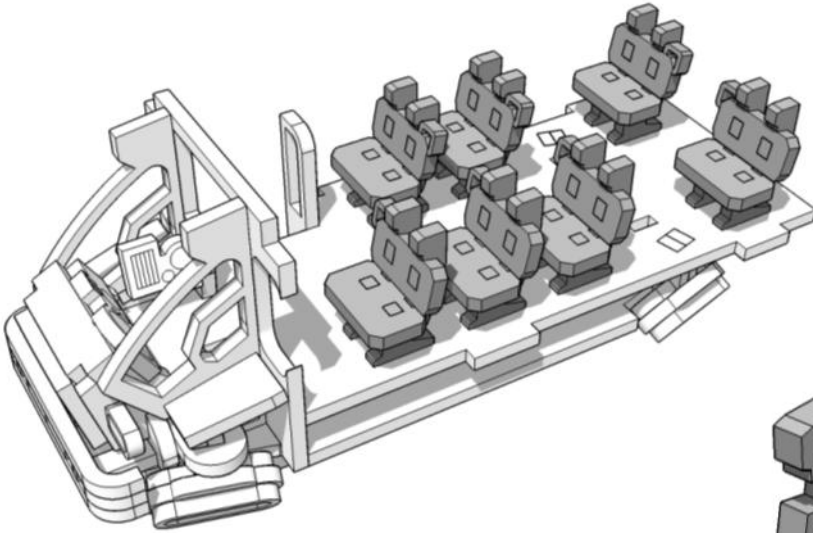


**Make 4**

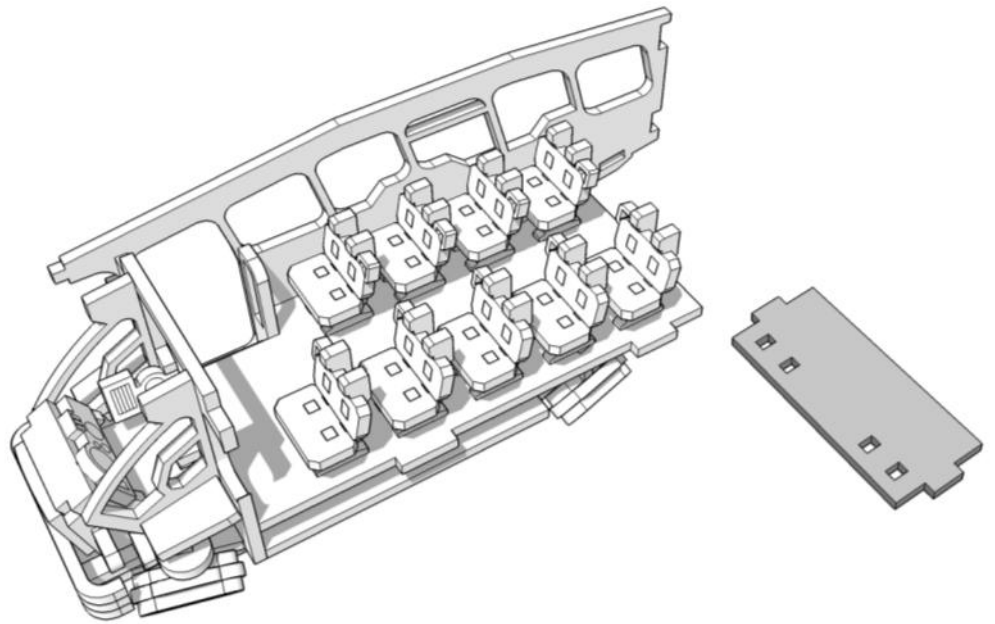
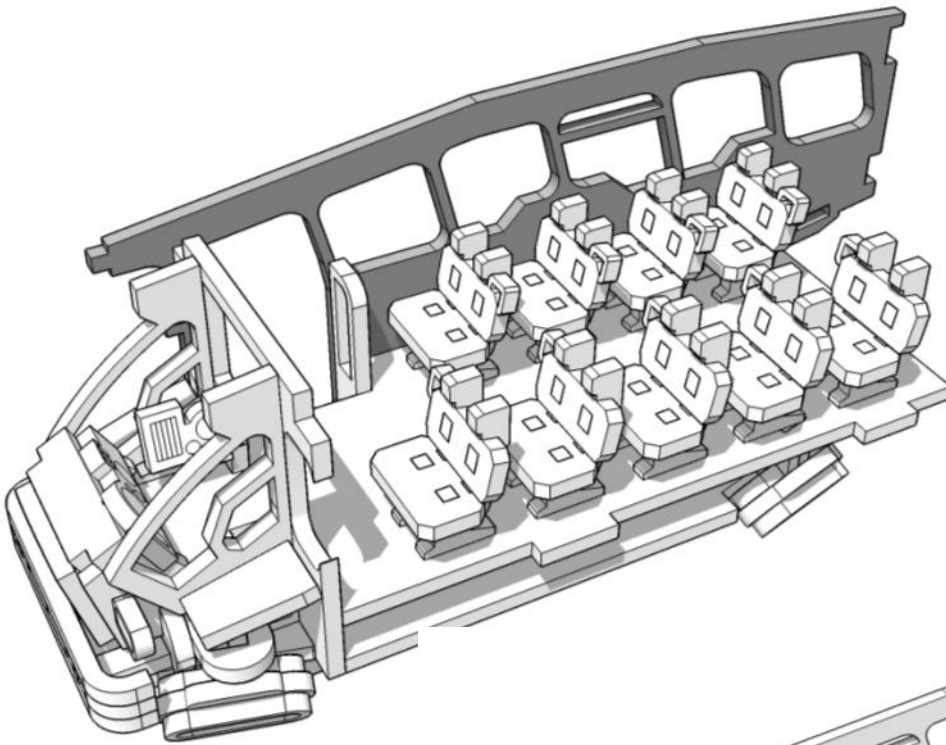
**Note: Handles on the sides.**



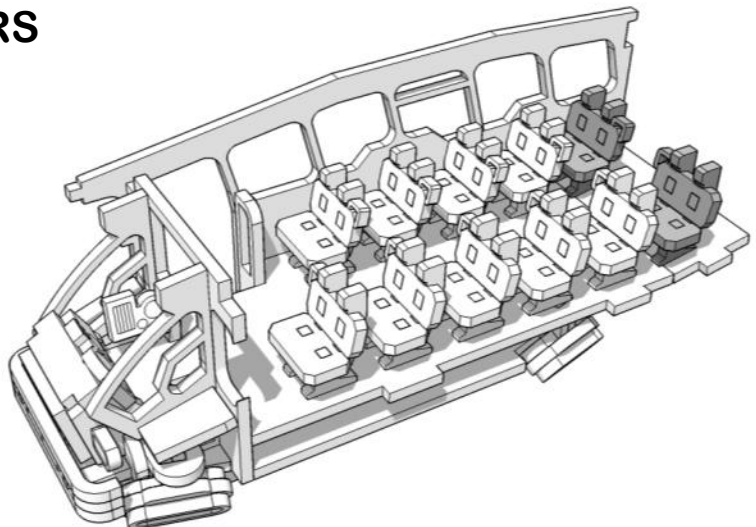
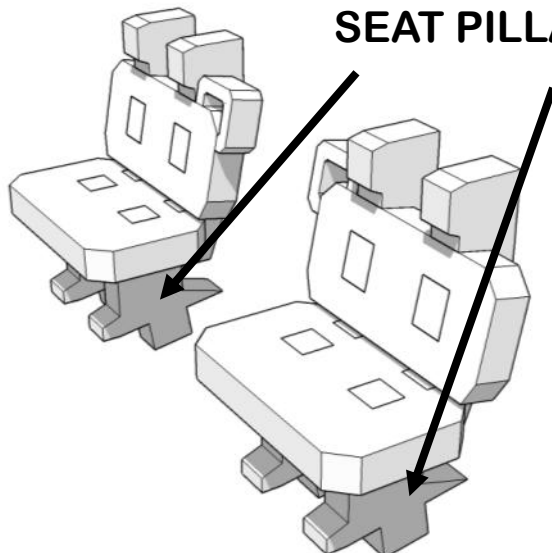
# MINIATURE SCENERY



# MINIATURE SCENERY

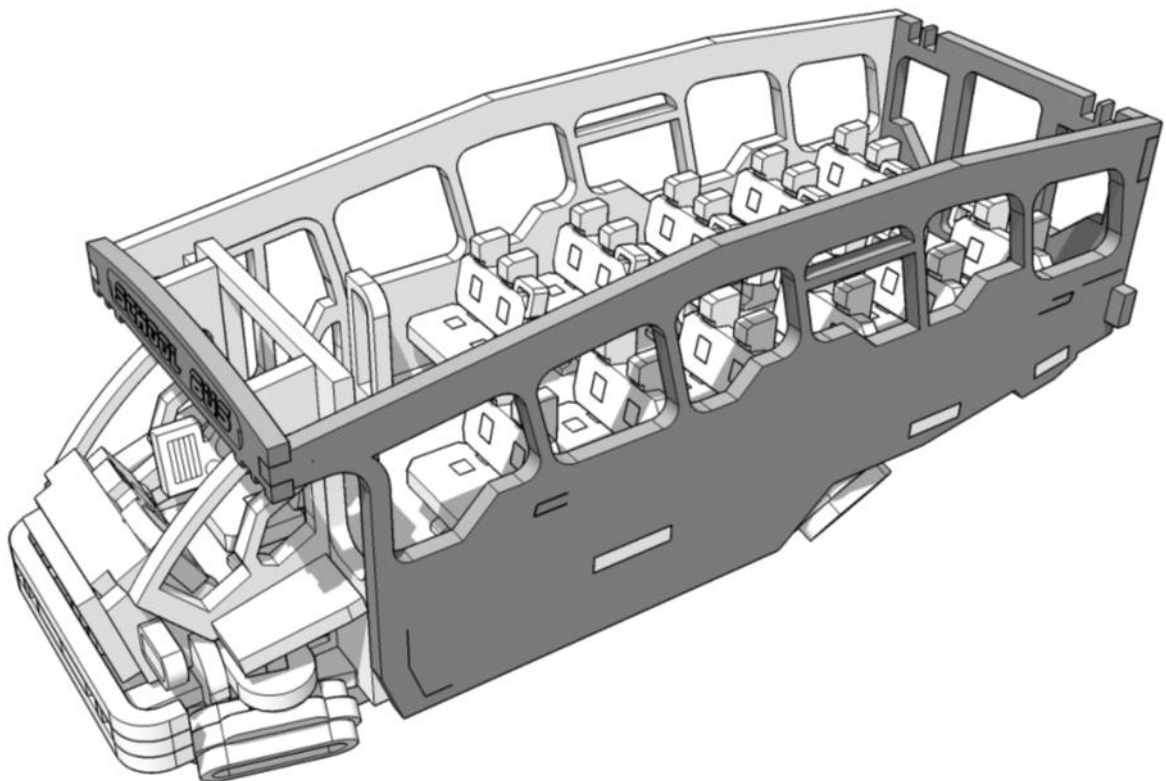
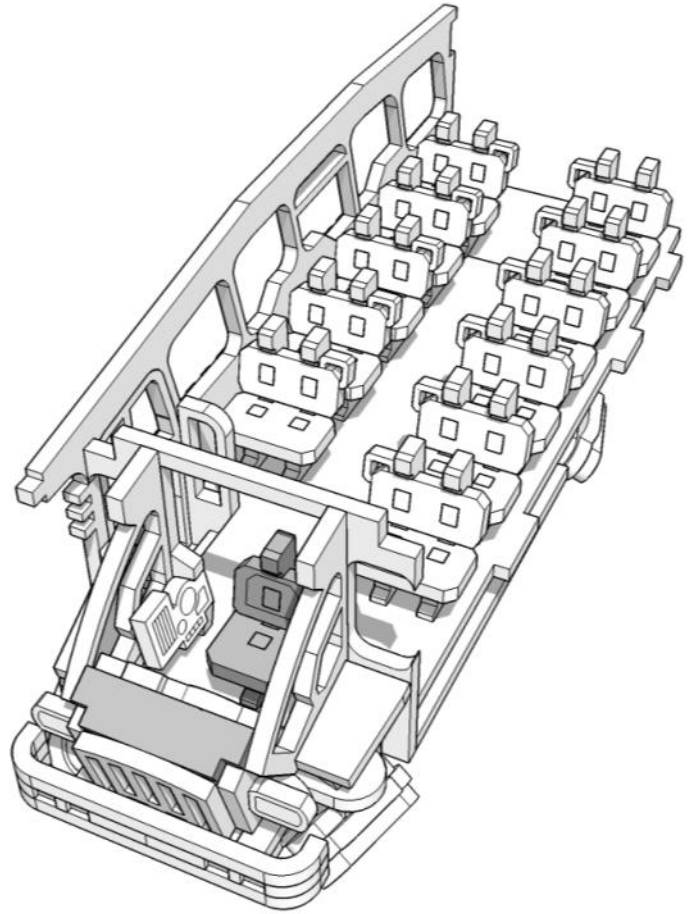
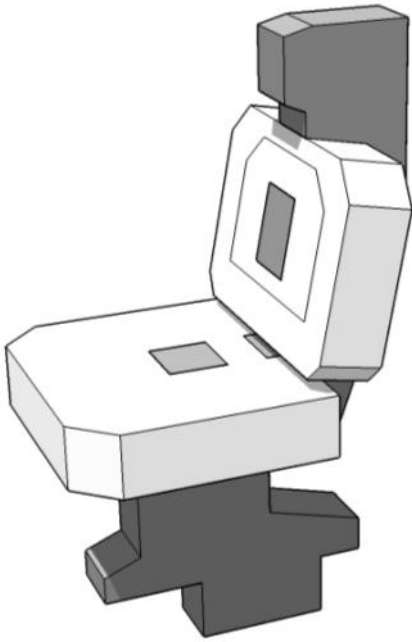


**NOTE: INCLINED  
SEAT PILLARS**

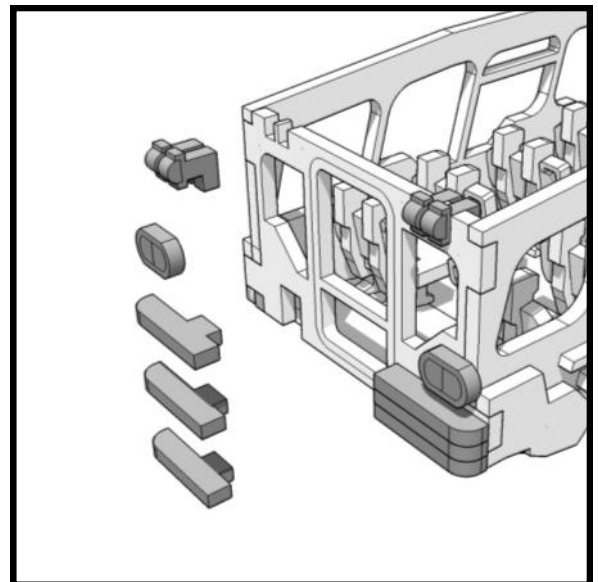
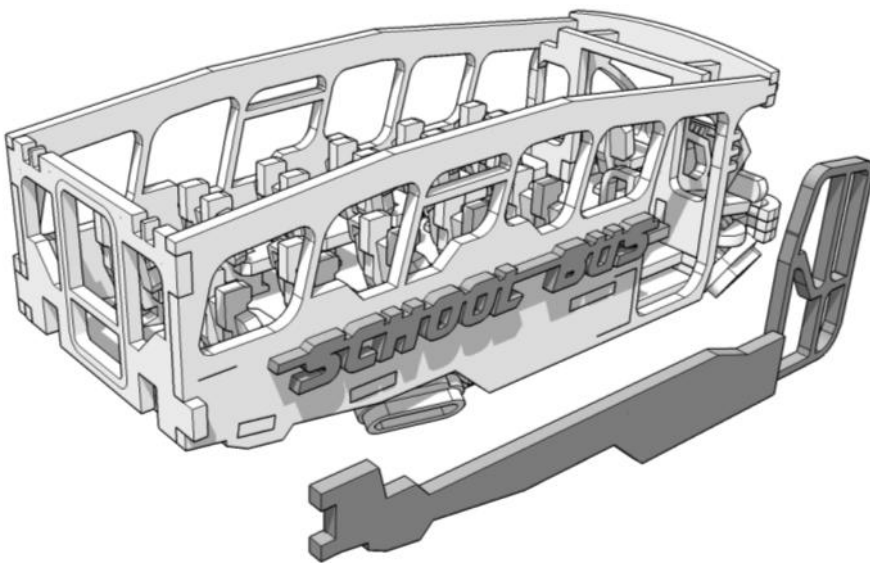
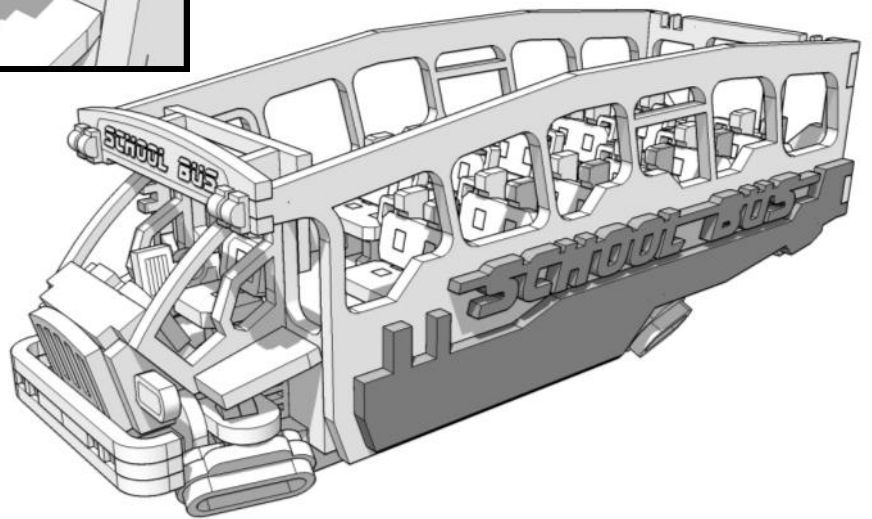
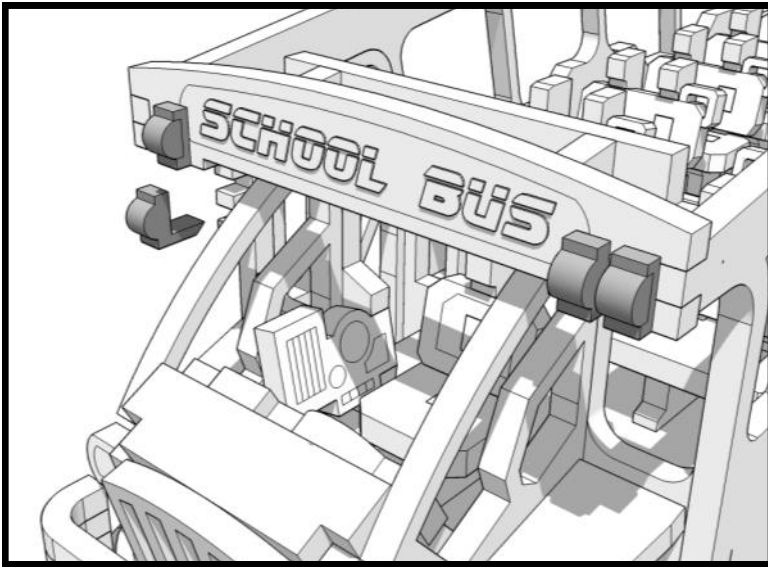




# MINIATURE SCENERY

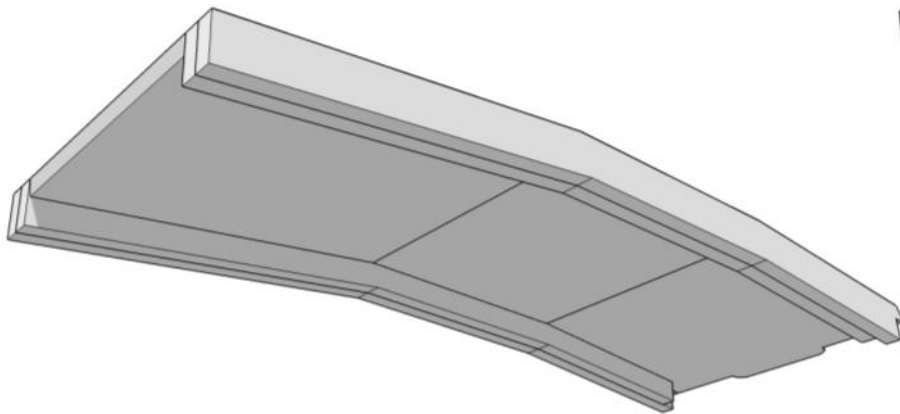
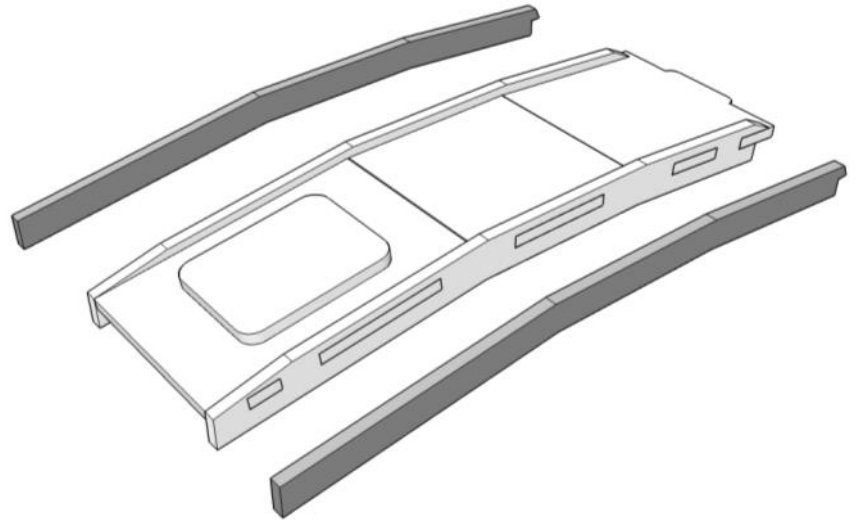
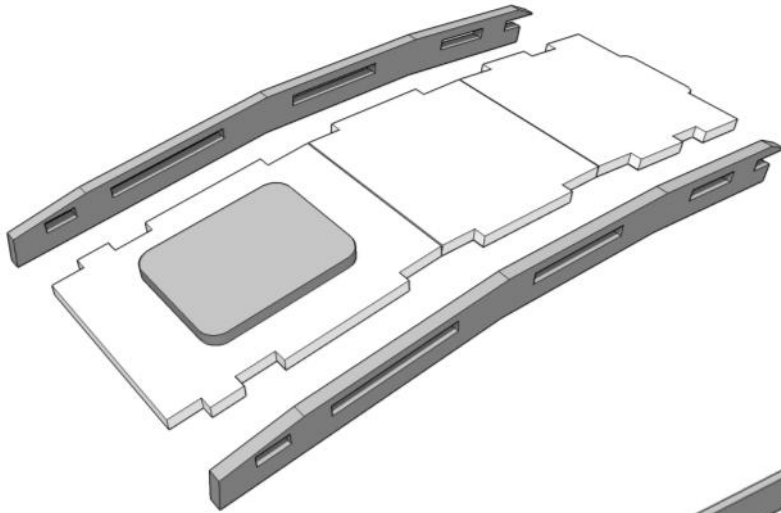


# MINIATURE SCENERY

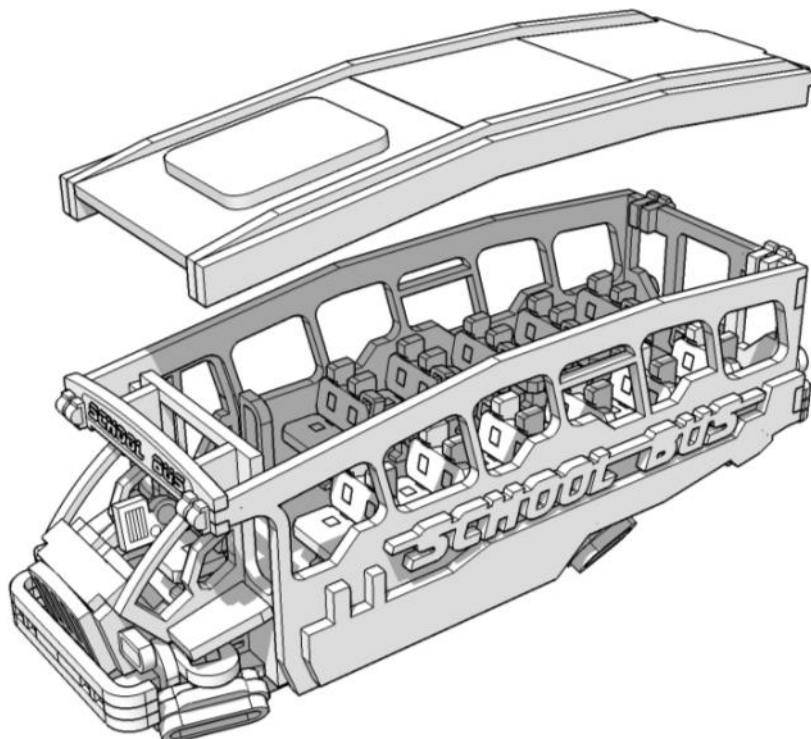




# MINIATURE SCENERY



The Roof Should  
just drop in, no  
need to glue.



# MINIATURE SCENERY

