

MINIATURE SCENERY



Model supplied unpainted and unassembled

GOBLIN GUNZ

MINIATURE SCENERY MODELS ARE DESIGNED FOR 25MM (1 INCH) BASE MINIATURES, IDEAL FOR GAMERS AND COLLECTORS.

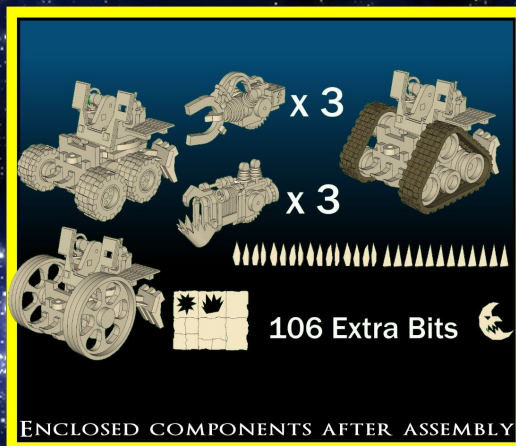
AT WWW.MINIATURESCENERY.COM WE PROVIDE DETAILED AND EASY TO FOLLOW ILLUSTRATED GUIDES FOR PAINTING TERRAIN.

GOBLIN GUNZ MAY LOOK LIKE JUNK, BUT THEIR FIREPOWER CERTAINLY ISN'T.

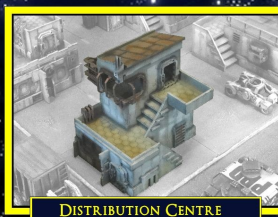
PACK CONTAINS:

- 3 X WEAPON PLATFORMS
- 3 X MAGNATON DISABLER GUNZ
- 3 X ELECTRO-PLASMA GUNZ
- 106 EXTRA RANDOM DETAILS CUT FROM CARDBOARD

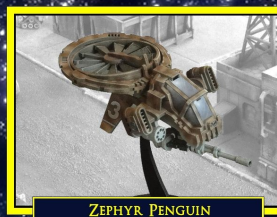
ALL INSTRUCTIONS AVAILABLE ONLINE AT [HTTP://WWW.MINIATURESCENERY.COM](http://WWW.MINIATURESCENERY.COM)



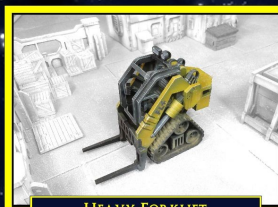
ENCLOSED COMPONENTS AFTER ASSEMBLY



DISTRIBUTION CENTRE



ZEPHYR PENGUIN



HEAVY FORKLIFT



POWER GENERATOR



Goblin Guns

Preparation

Once you clear some table space you will need a hobby knife and glue (PVA, wood glue, hobby glue) and a file or small piece of sandpaper to be used for cleaning up any tiny imperfections.

It's a good idea to familiarise yourself with how the pieces fit together before gluing.

Getting Started

I. Parts should remove easily from the board by pressing through and popping them out. It's a good idea to cut through the tiny joins first though, and some parts (particularly smaller, more detailed parts) may need more careful persuasion.

II. Use a file or sand paper last to completely remove the tabs that might remain.

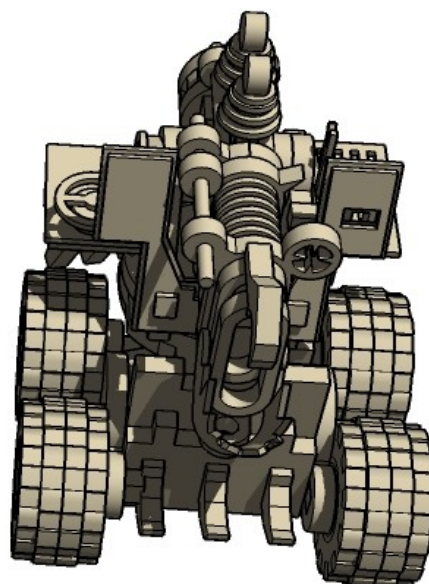
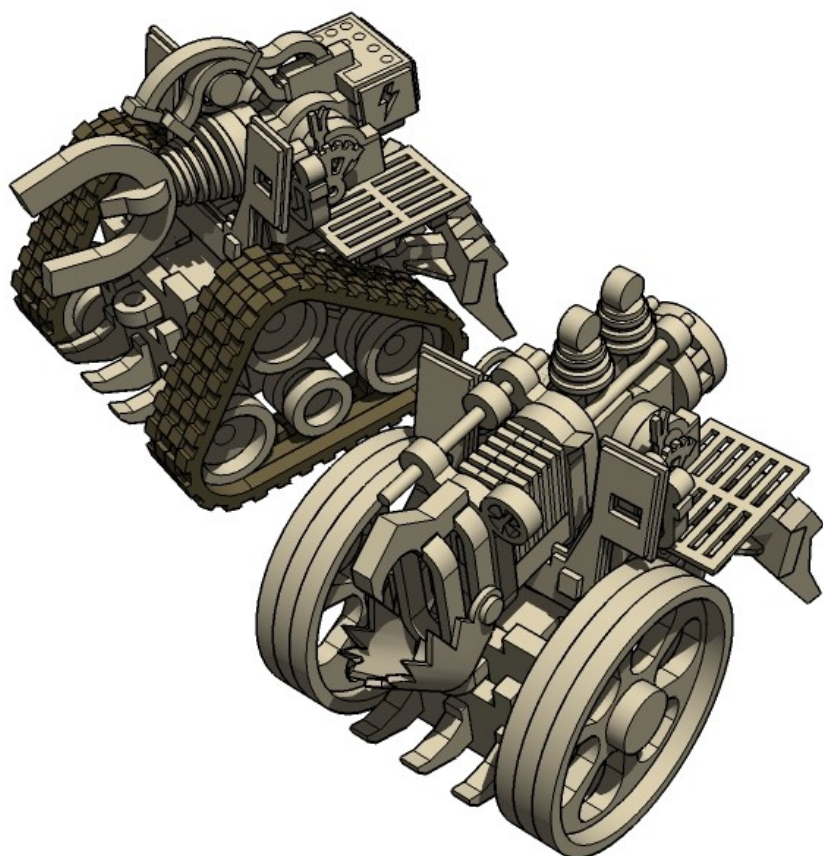
III. Parts may be a very tight fit, slight trimming or sanding of parts may be needed for ease of assembly.

Construction

Slot the parts together as shown by the pictures below, applying glue wherever there is a connection.

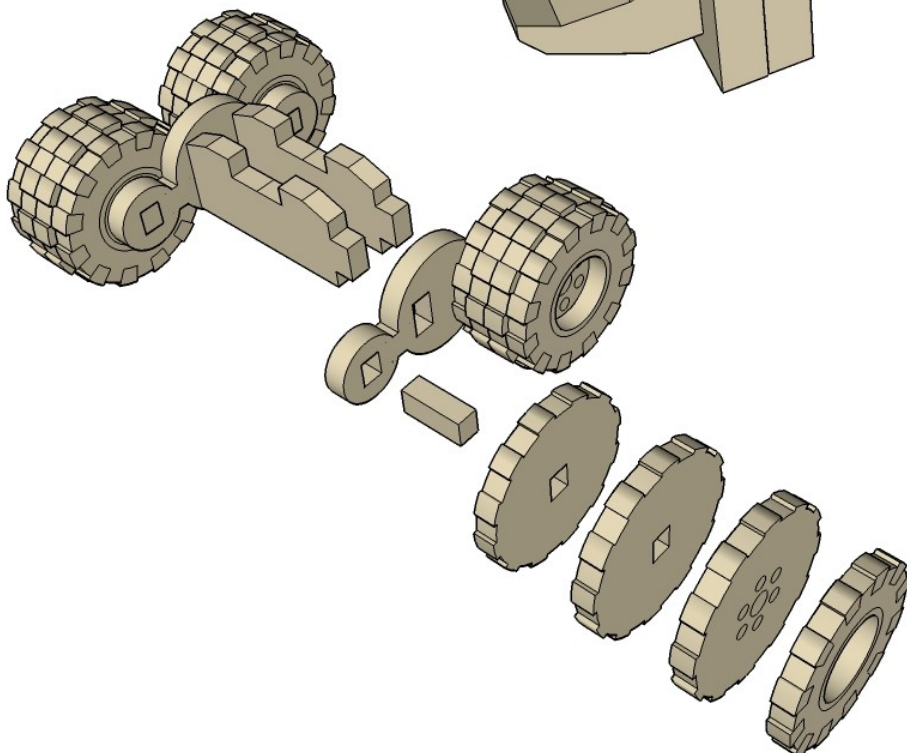
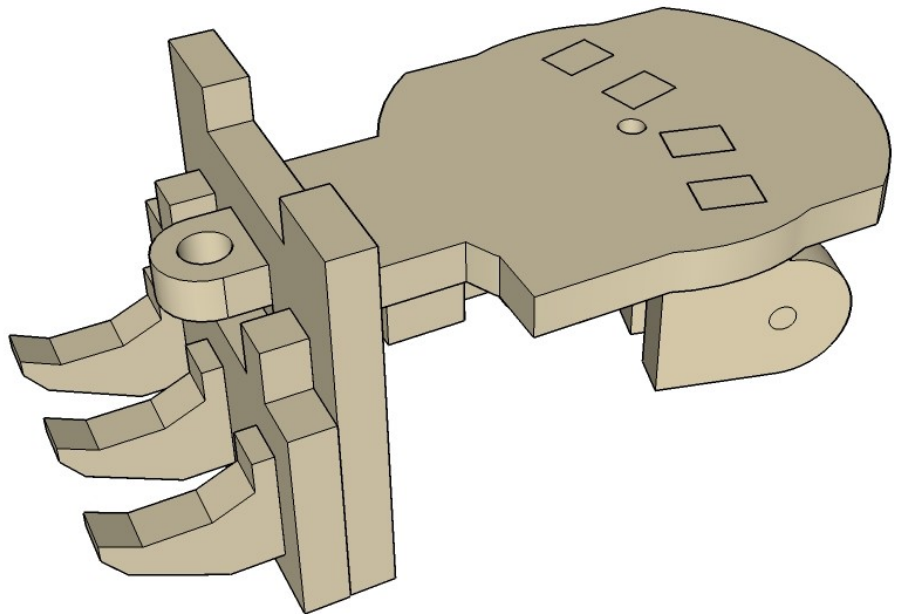
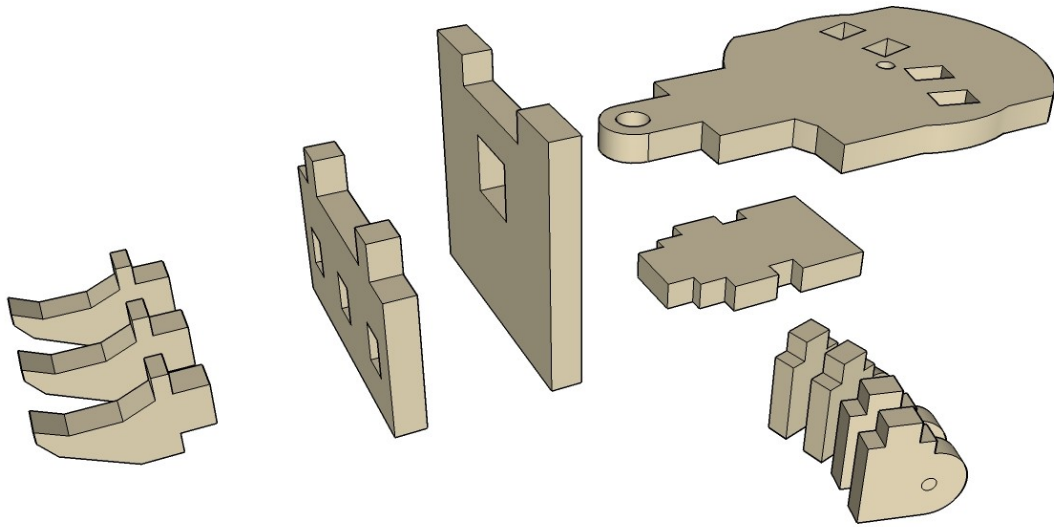
Allow the model to completely dry before painting it. This is a complex kit with many small parts. Allowing each section to dry thoroughly before heading to the next is strongly recommended.

Some parts of this kit are very fine, or have engraving very close to edges. Make sure you cut through any tabs carefully with a hobby knife first to avoid damage.



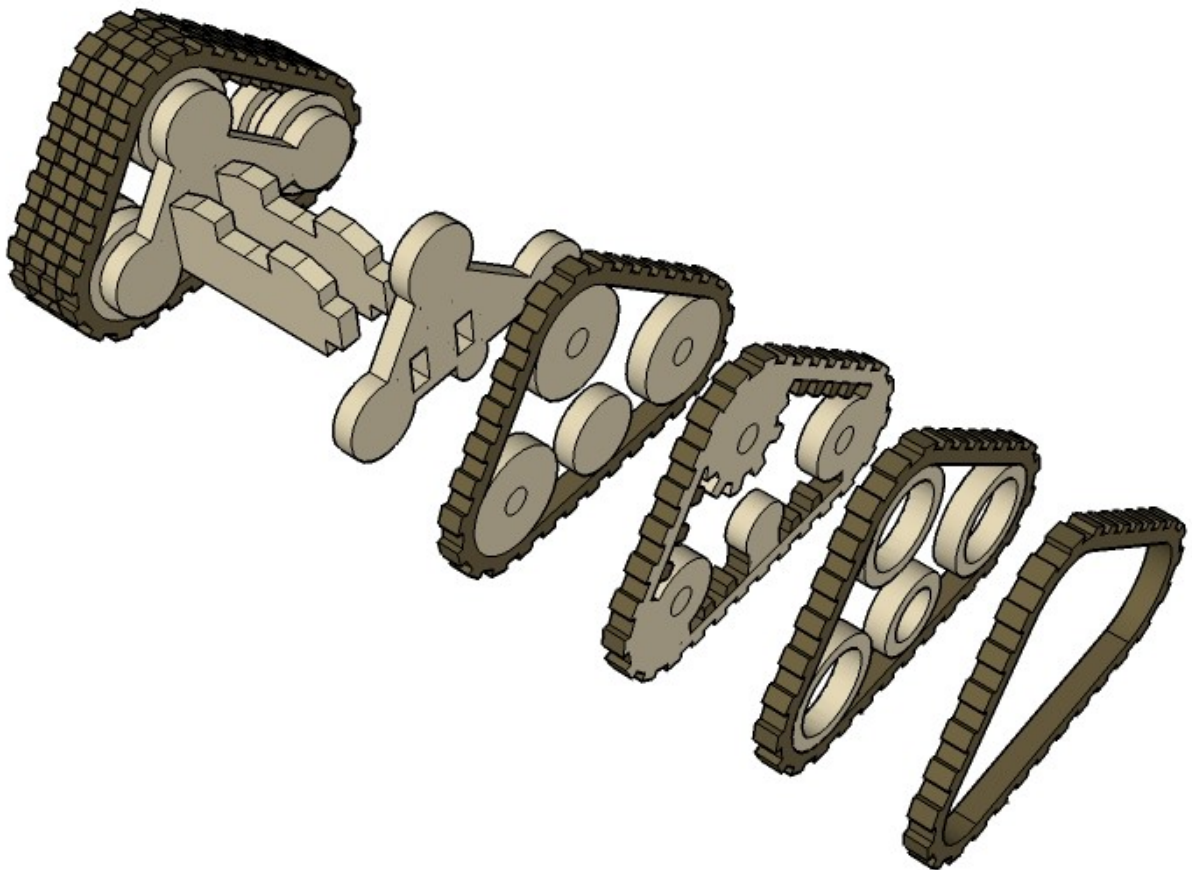
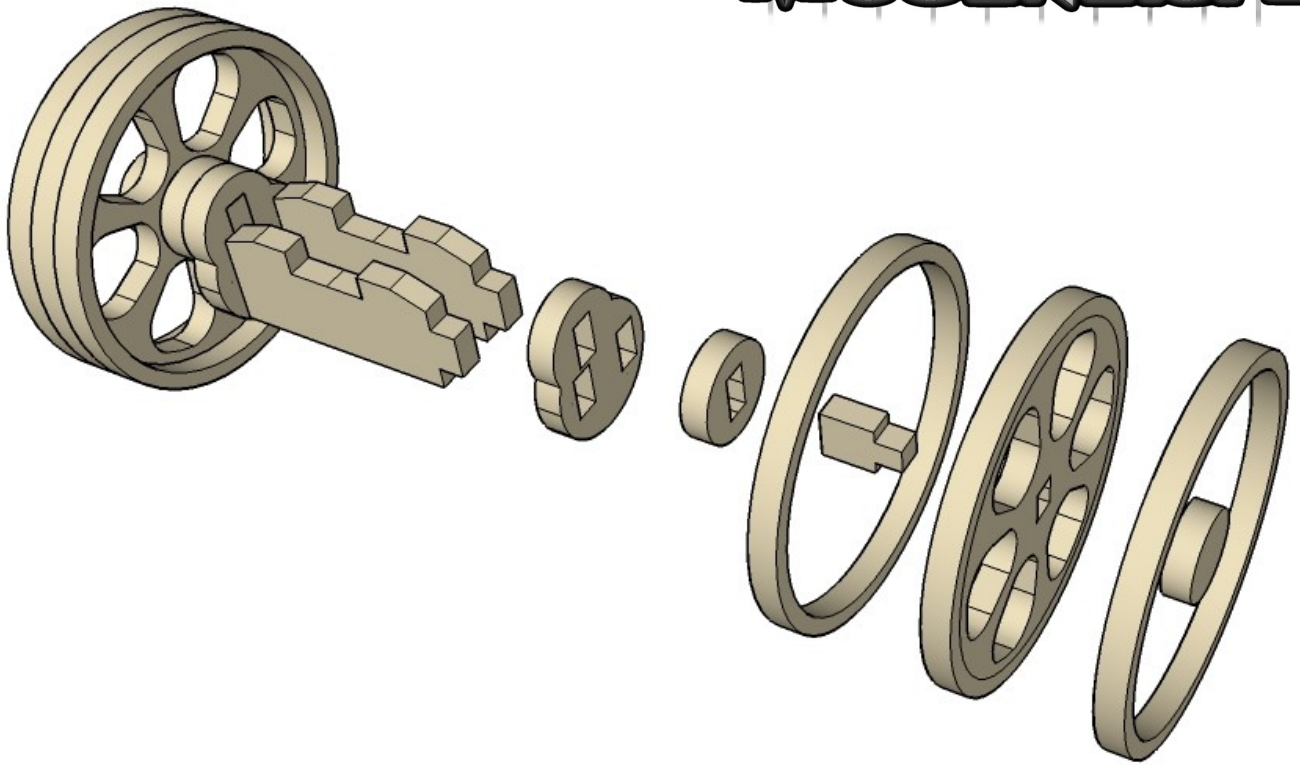
CNC WORKSHOP

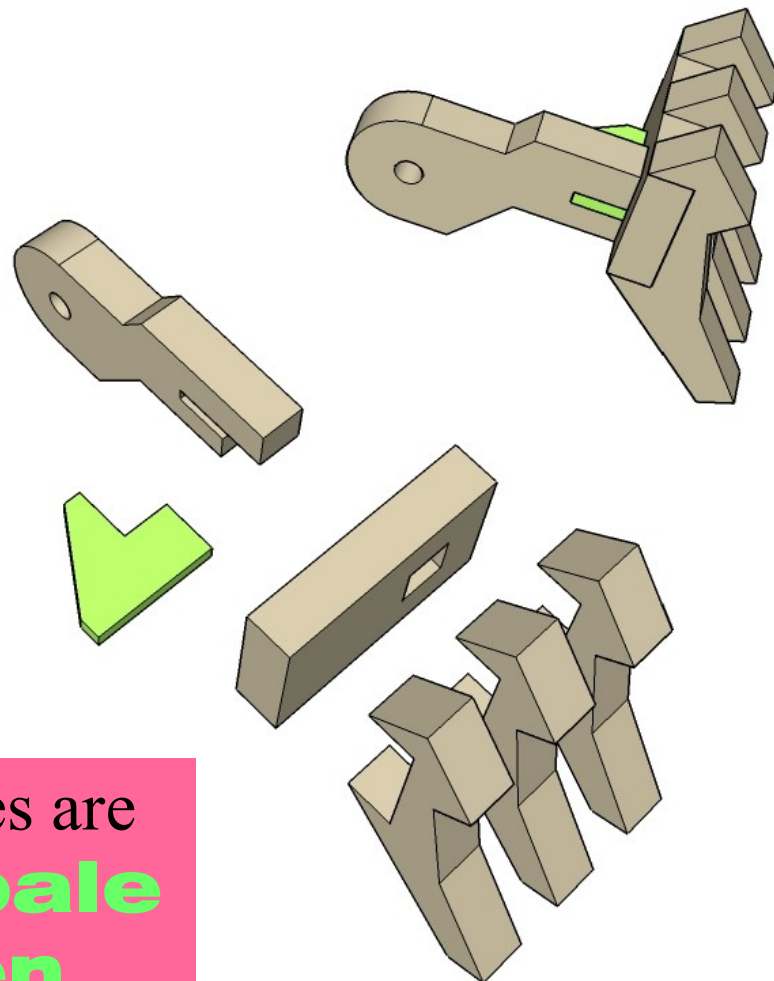
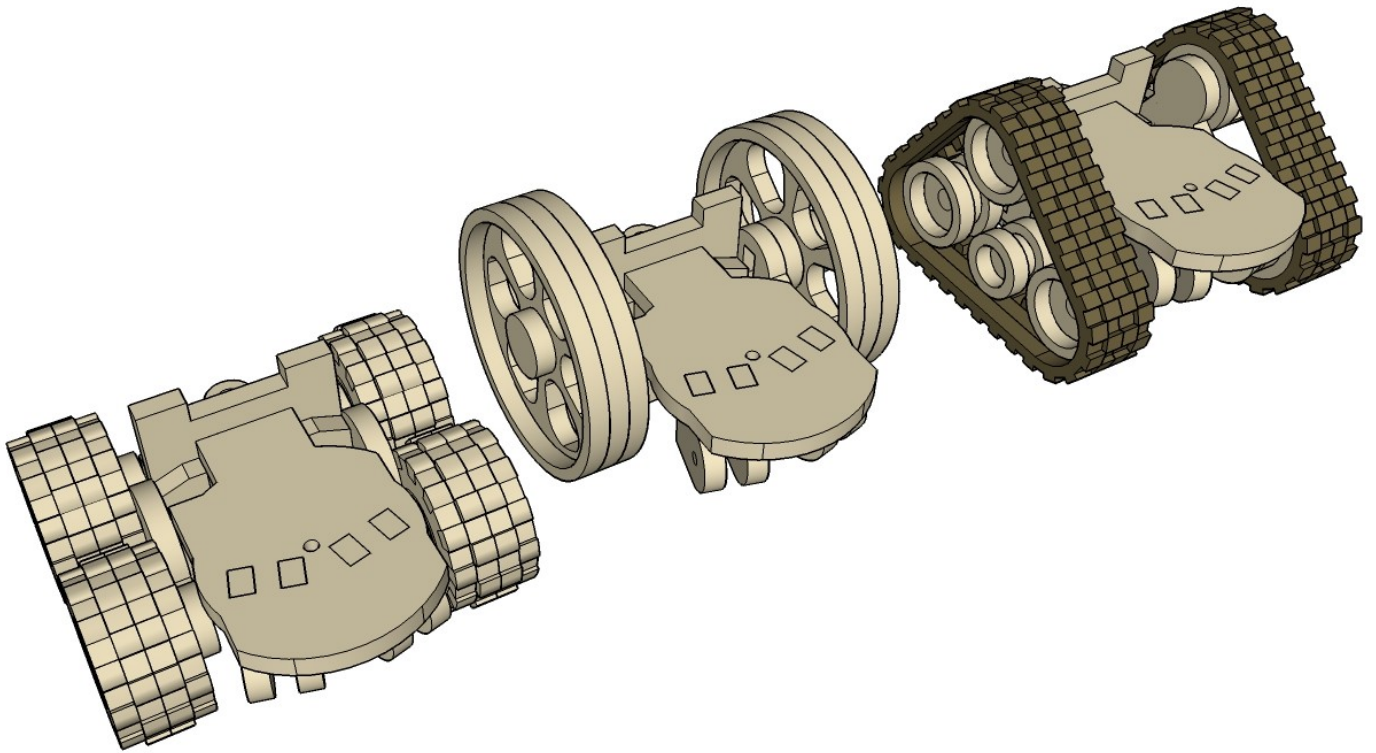
MINIATURE SCENERY



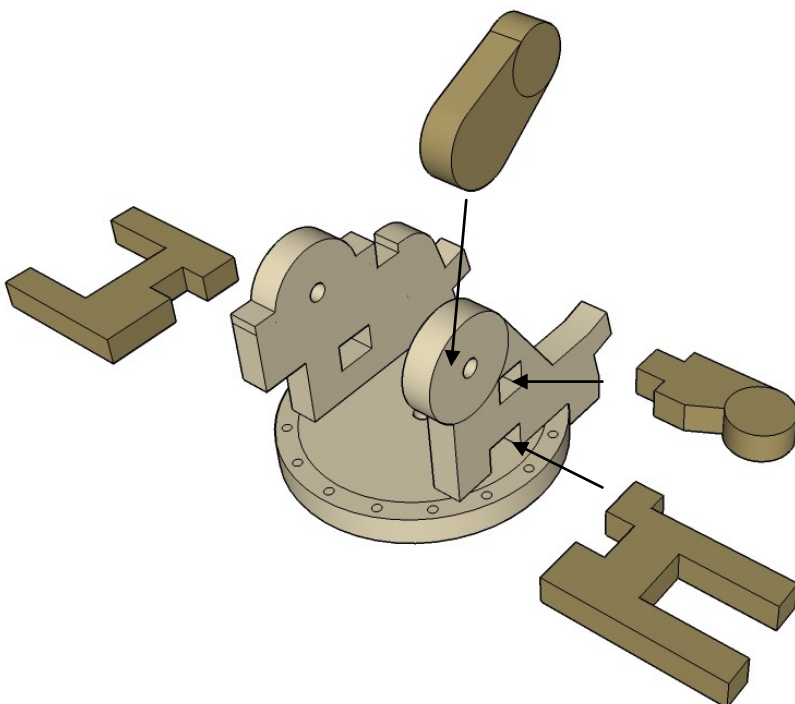
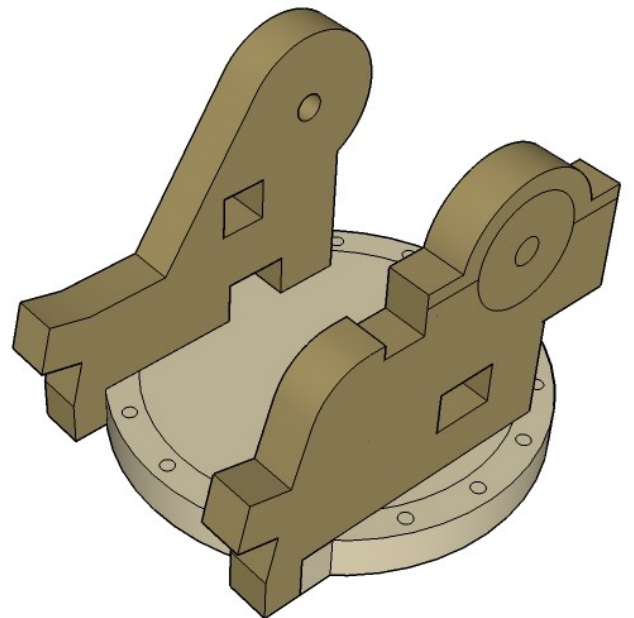
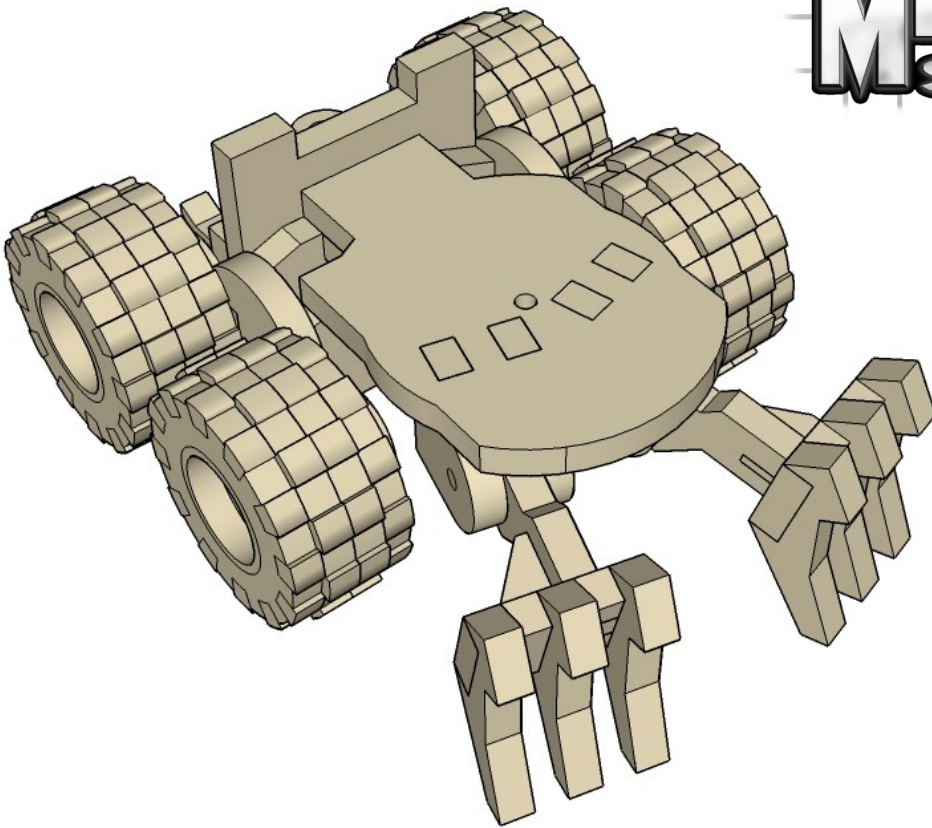
CNC WORKSHOP

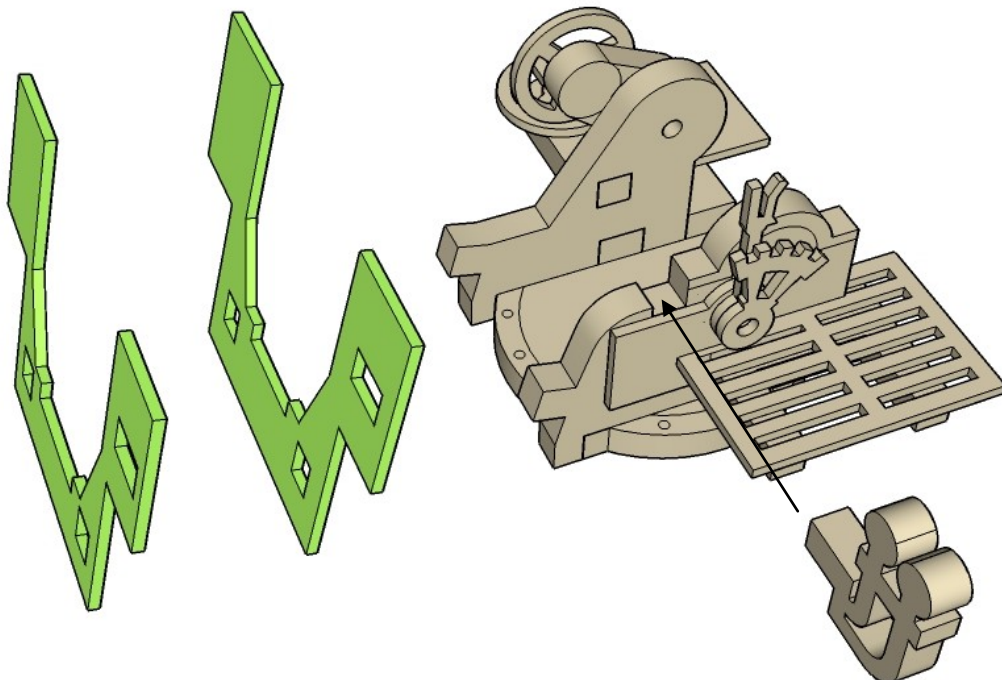
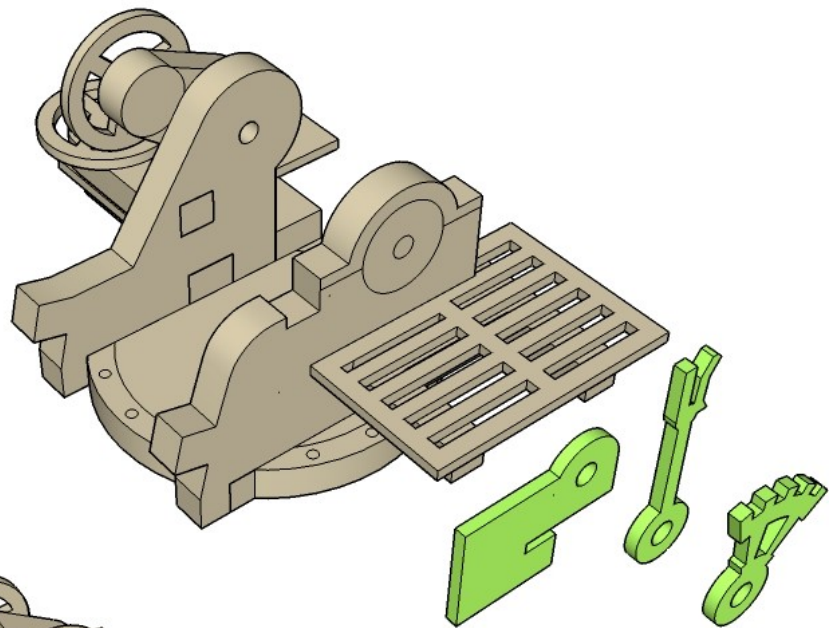
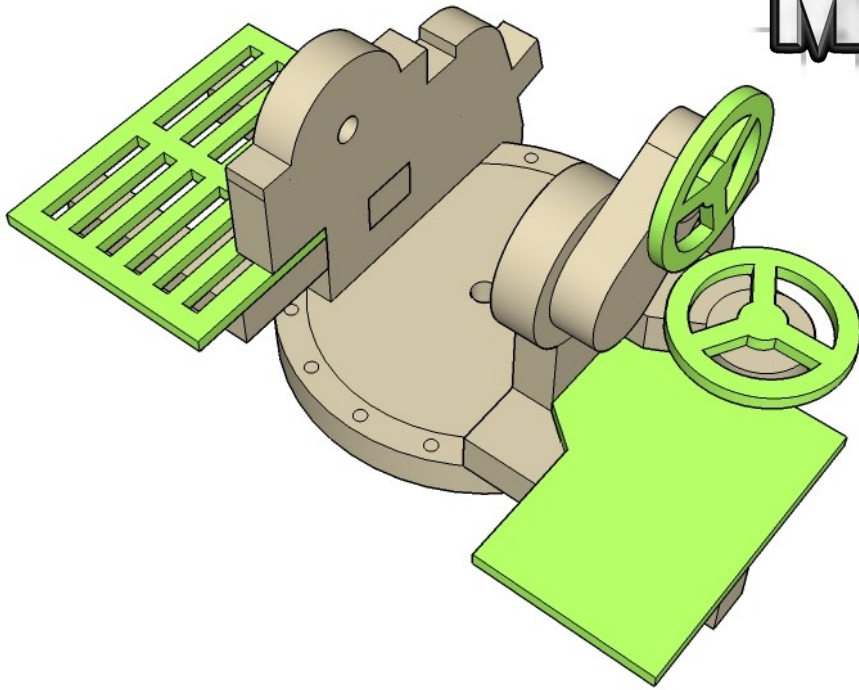
MINIATURE SCENERY





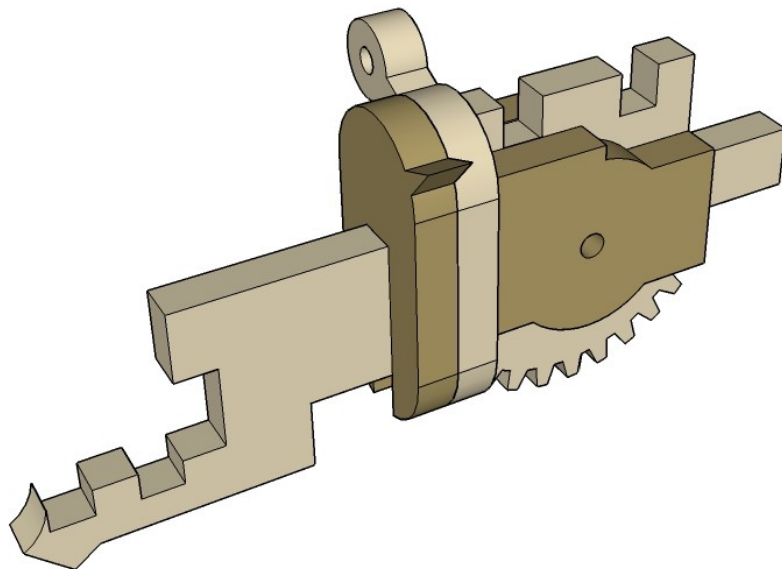
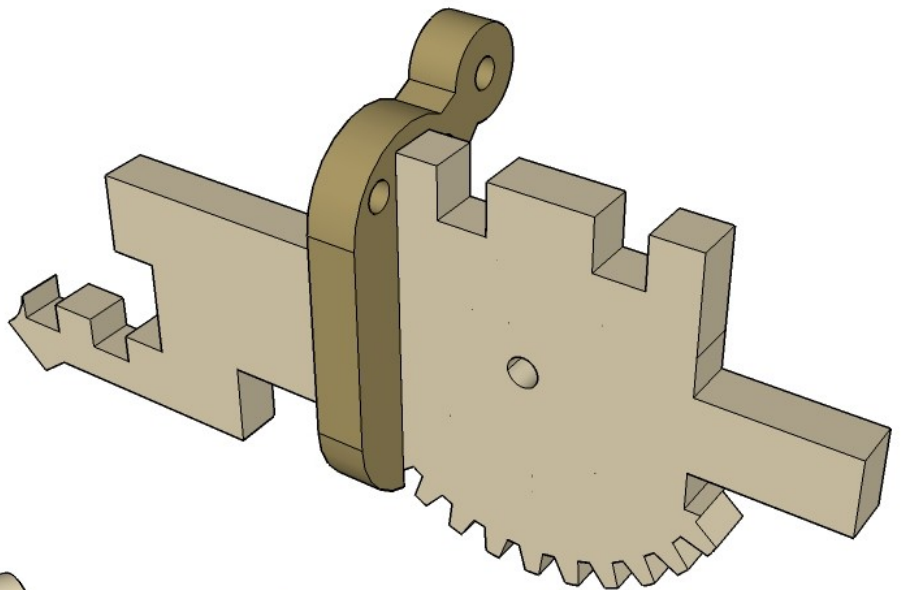
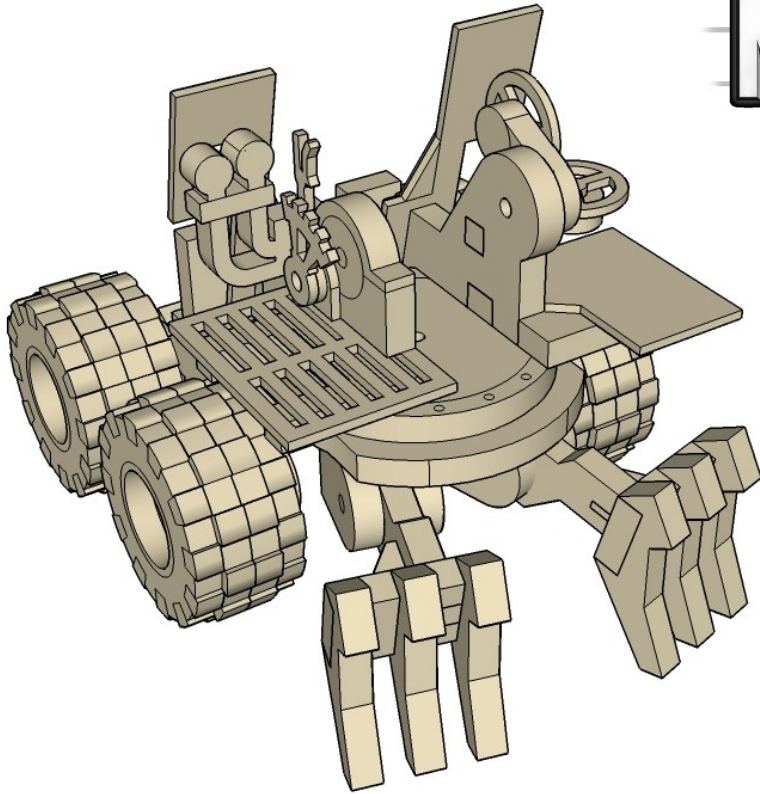
Card pieces are
shown in **pale
green**

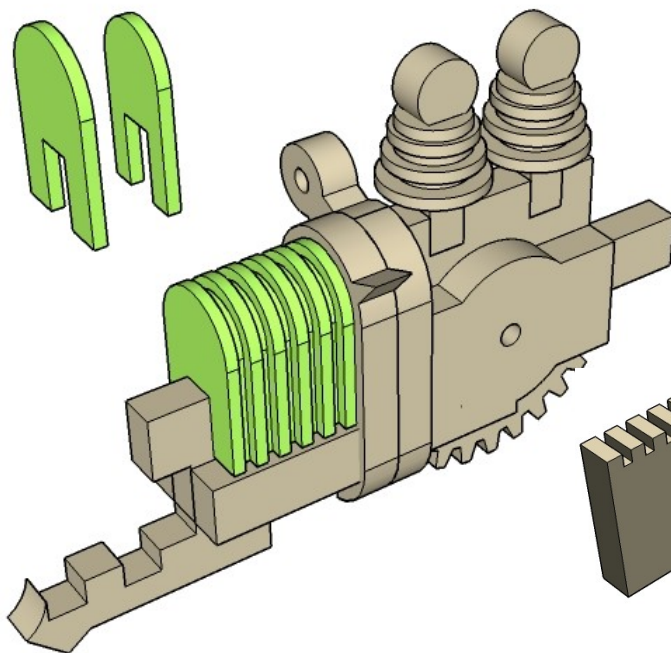
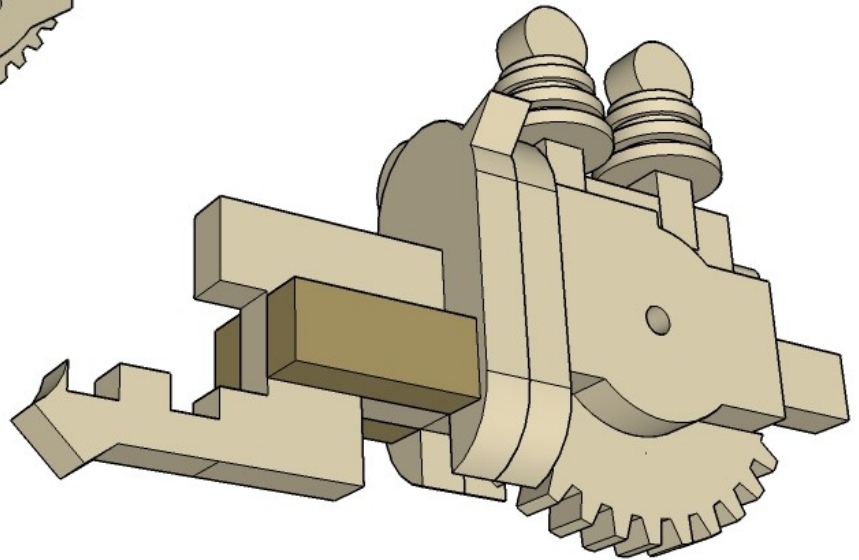
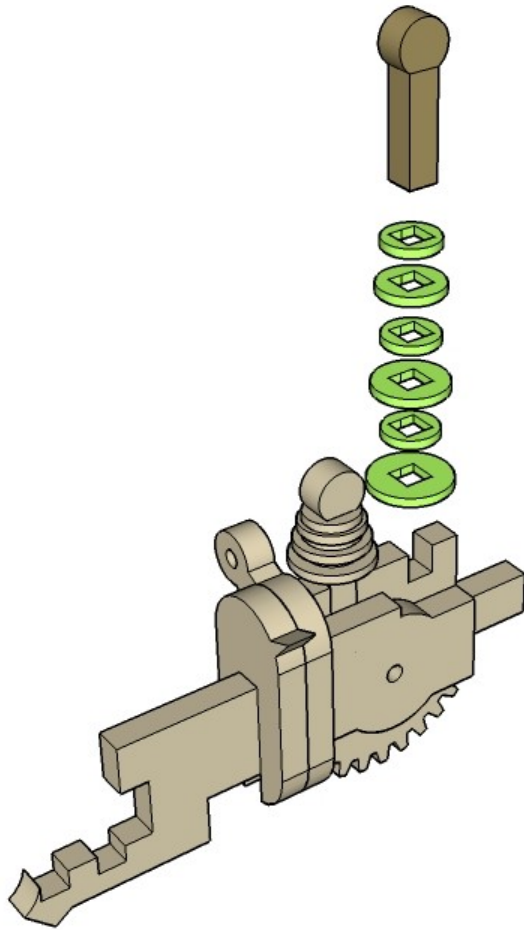




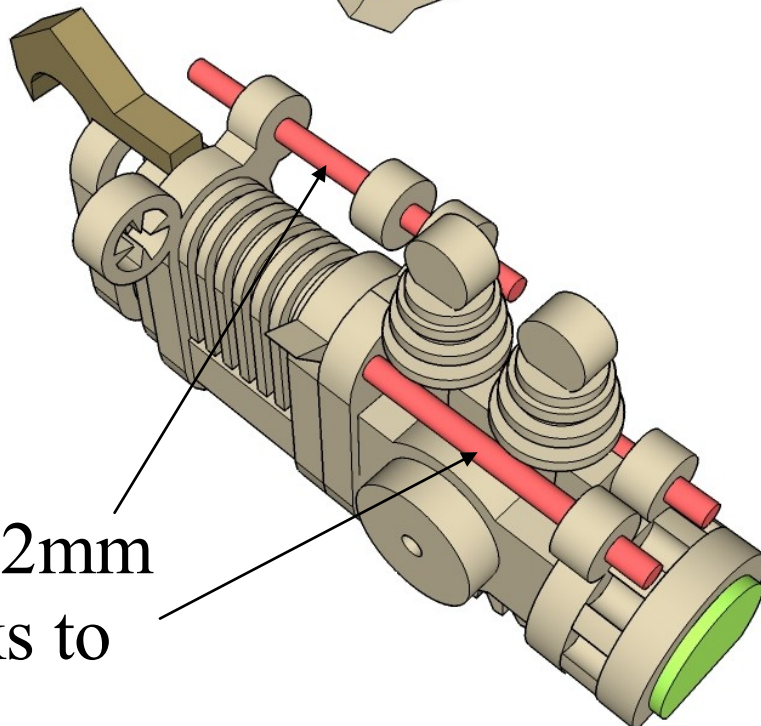
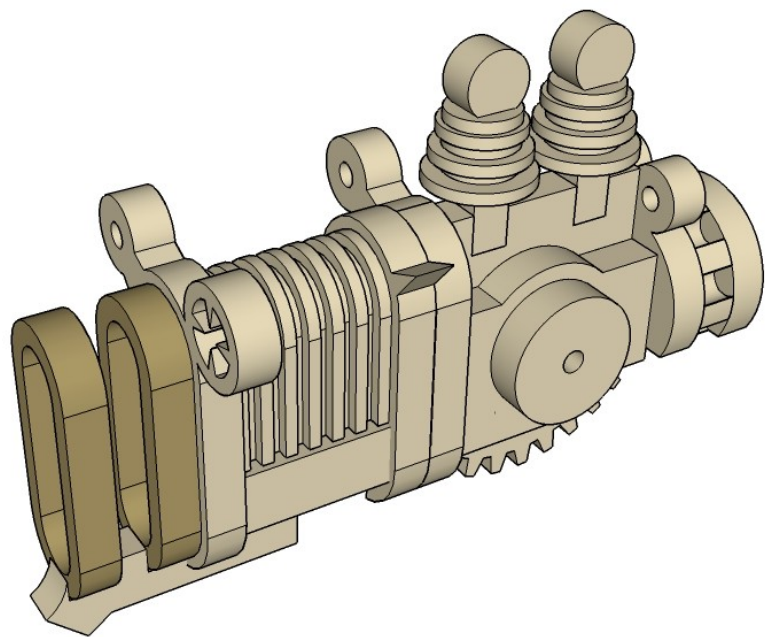
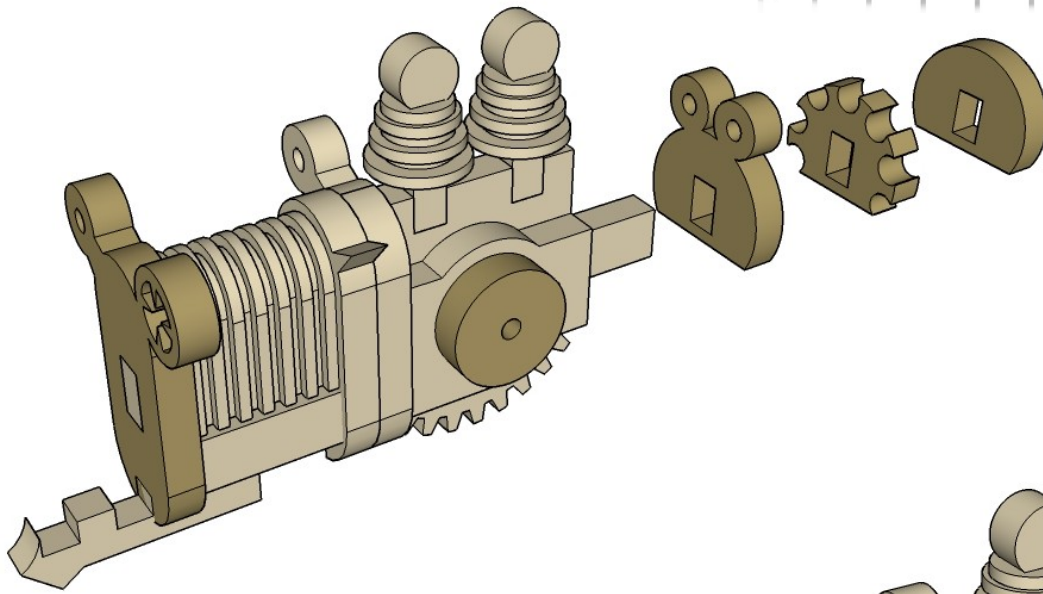
CNC WORKSHOP

MINIATURE SCENERY





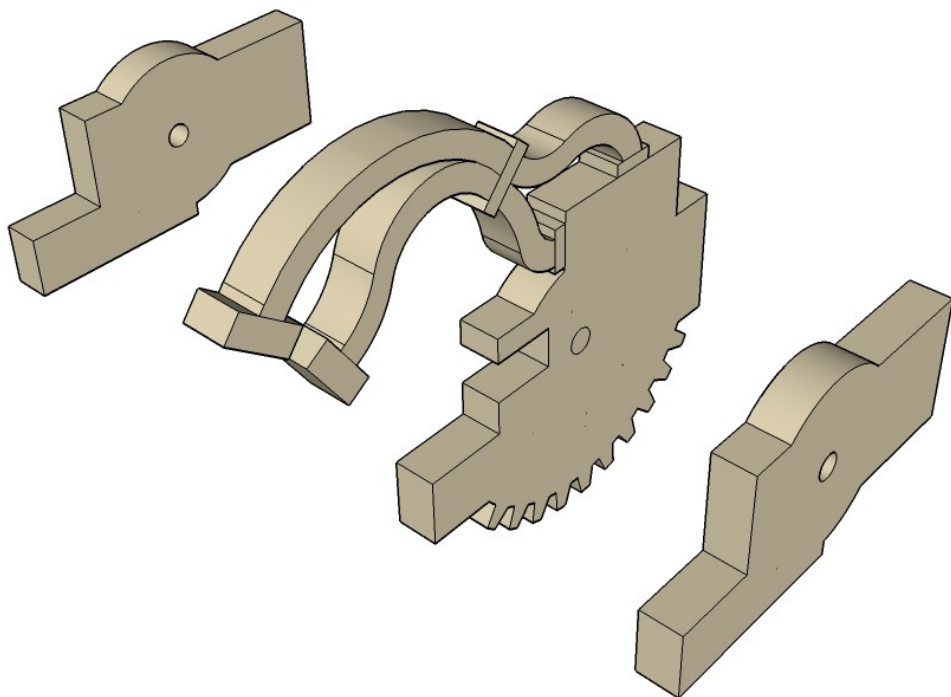
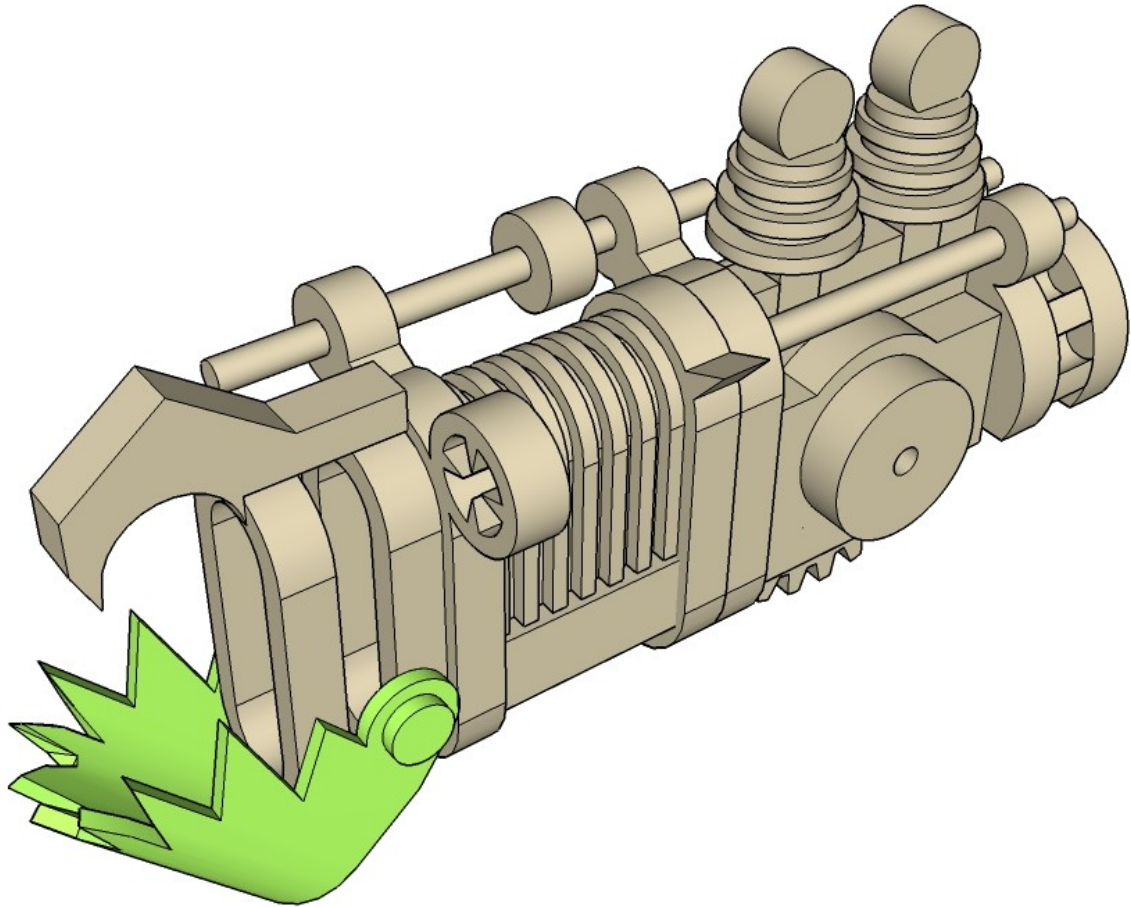
An alternative set of parts is provided for those that don't like sticking bits on bits. The boss insisted.

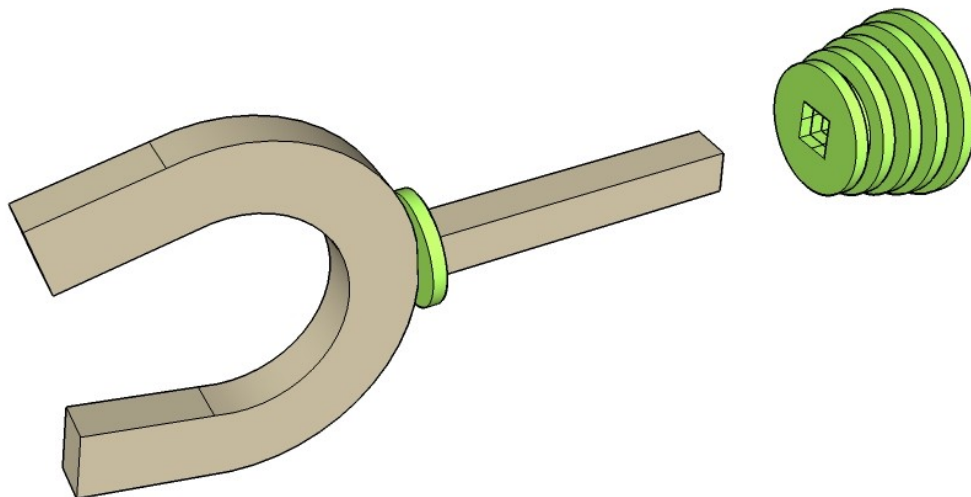
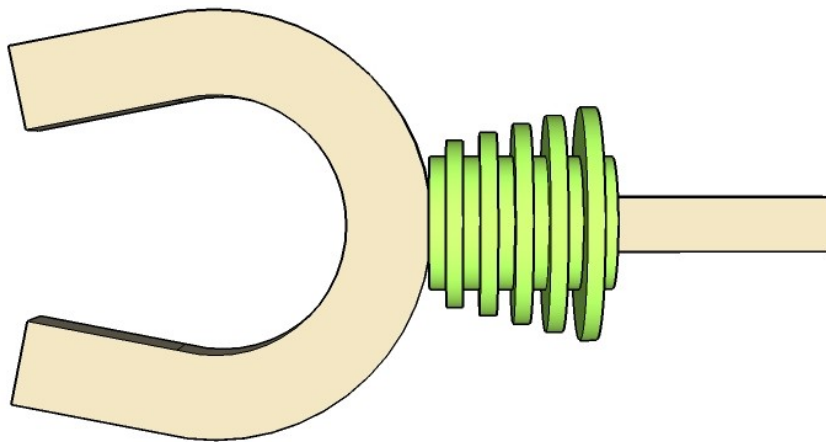
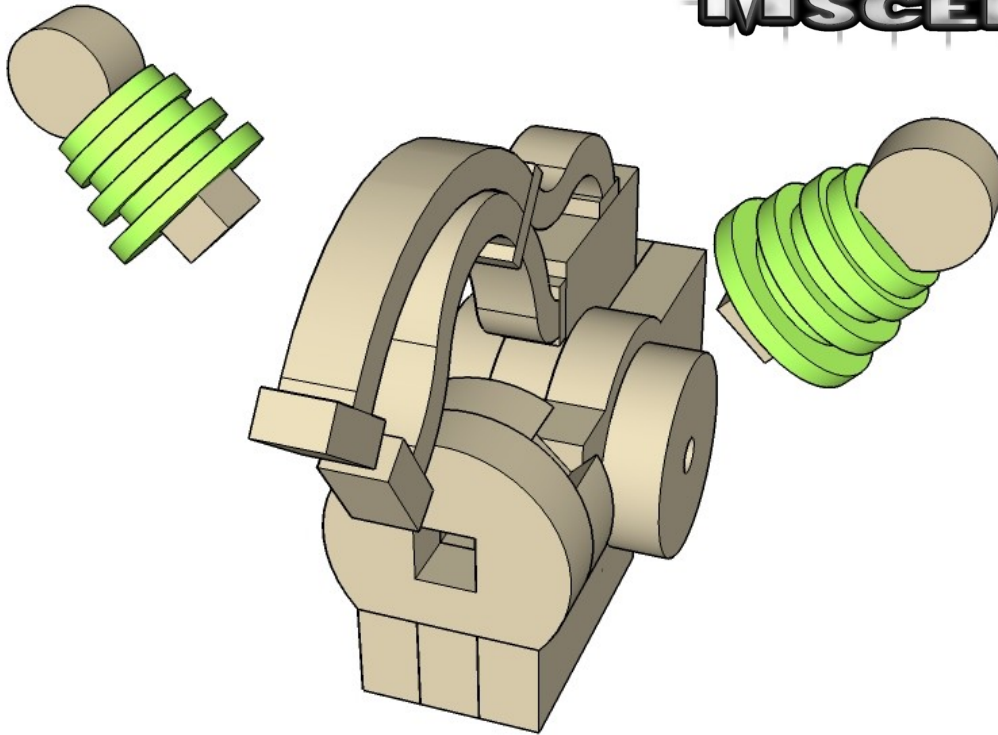


Cut round 2mm
toothpicks to
length.

CNC WORKSHOP

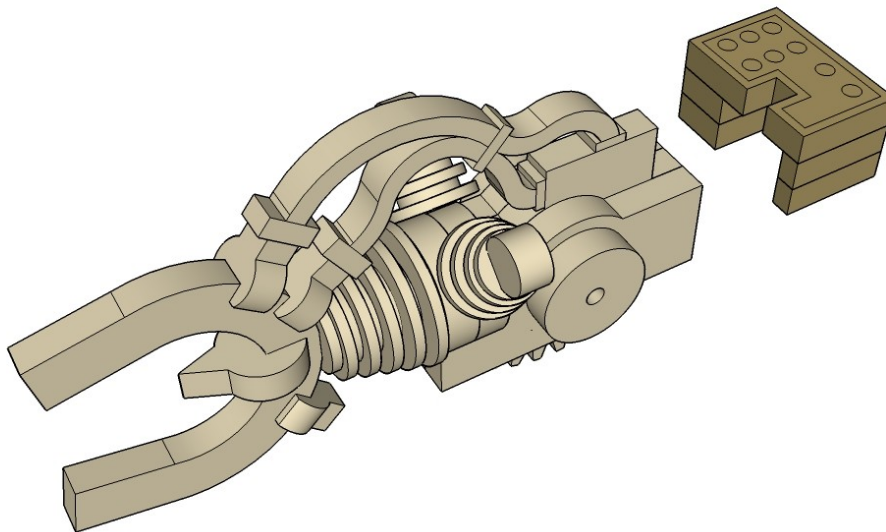
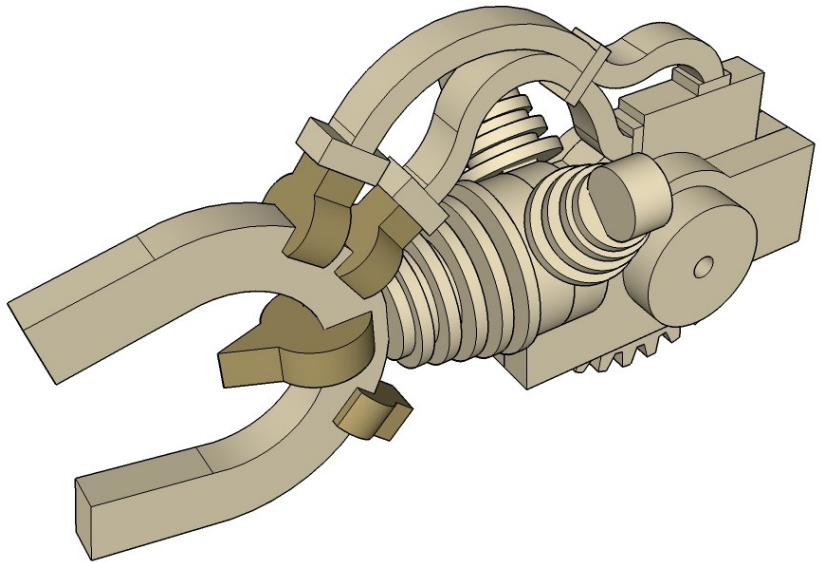
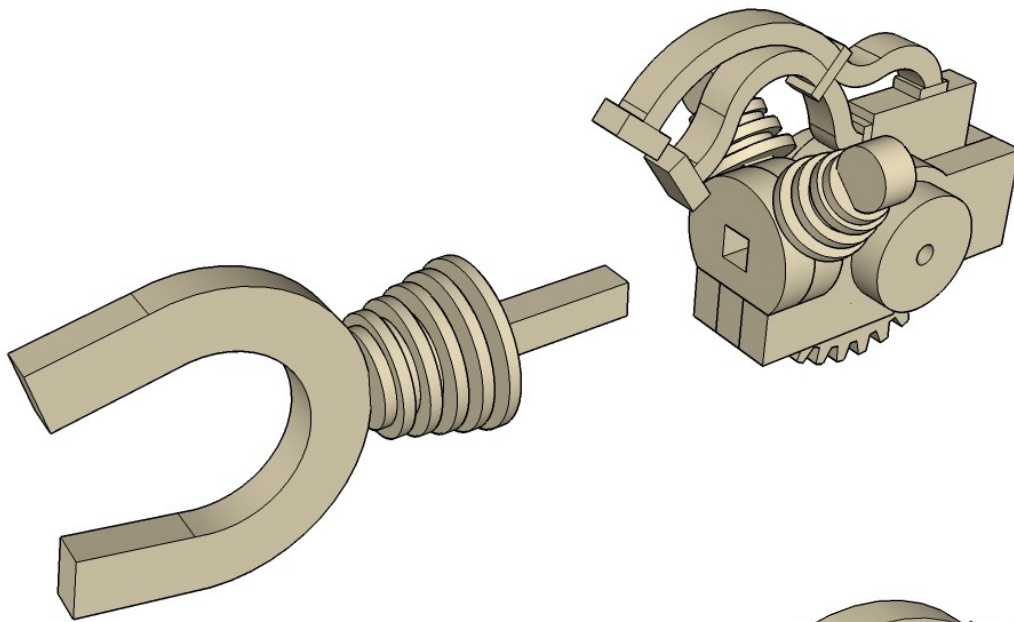
MINIATURE SCENERY

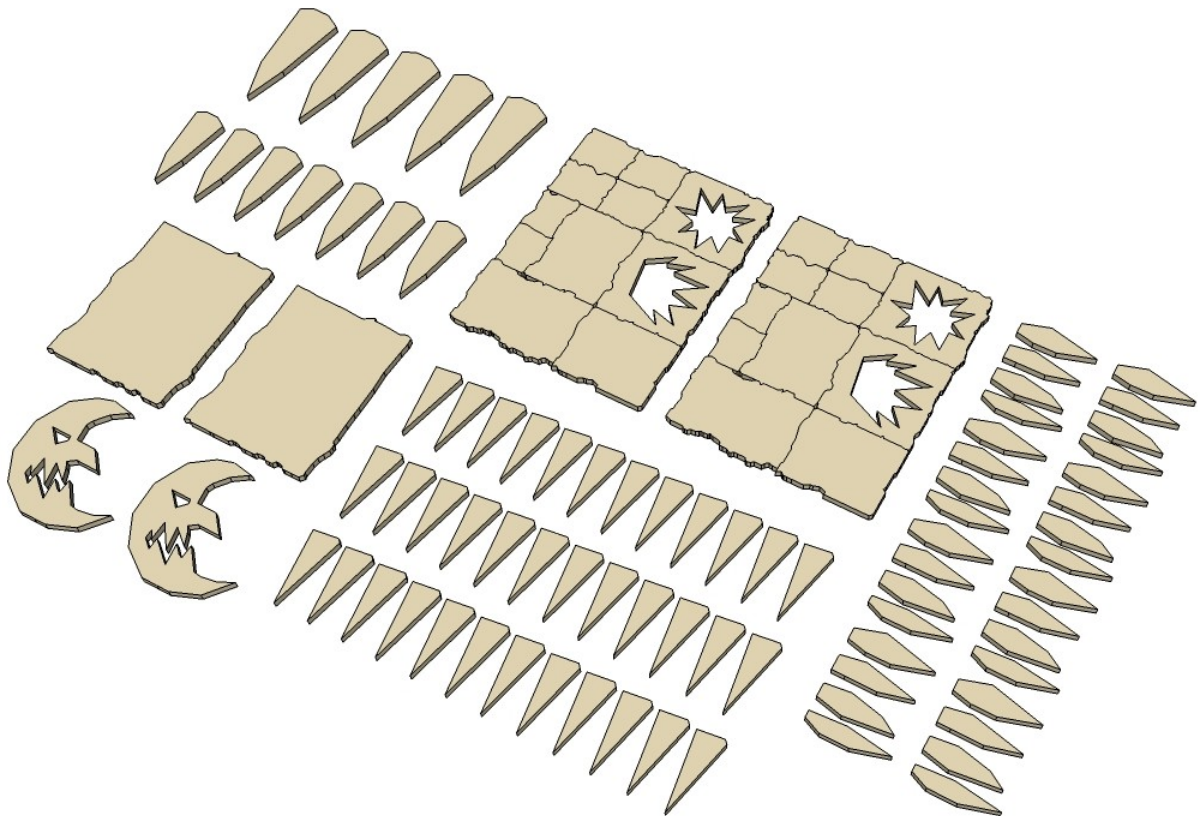
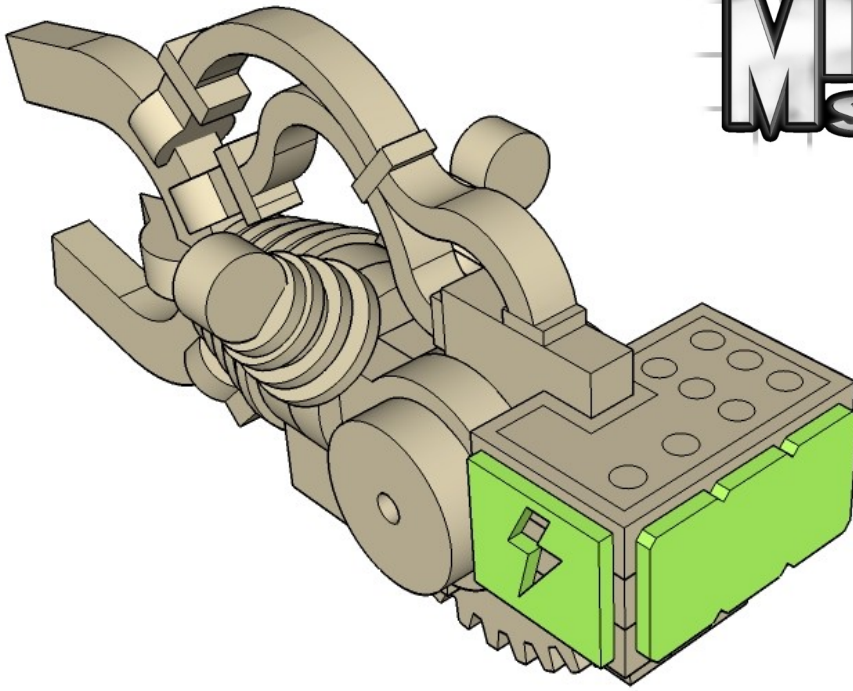




CNC WORKSHOP

MINIATURE SCENERY





The are loads of extra bits to decorate your gobbling guns.
Use the photos of the finished models for a guide if you
like, or just use you imagination.

CNC WORKSHOP

MINIATURE SCENERY

