

Preparation

Once you clear some table space you will need a hobby knife and glue (PVA, wood glue, hobby glue) and a file or small piece of sandpaper to be used for cleaning up any tiny imperfections.

It's a good idea to familiarise yourself with how the pieces fit together before gluing.

Getting Started

I. Parts should remove easily from the board by pressing through and popping them out. It's a good idea to cut through the tiny joins first though, and some parts (particularly smaller, more detailed parts) may need more careful persuasion.

II. Use a file or sand paper last to completely remove the tabs that might remain.

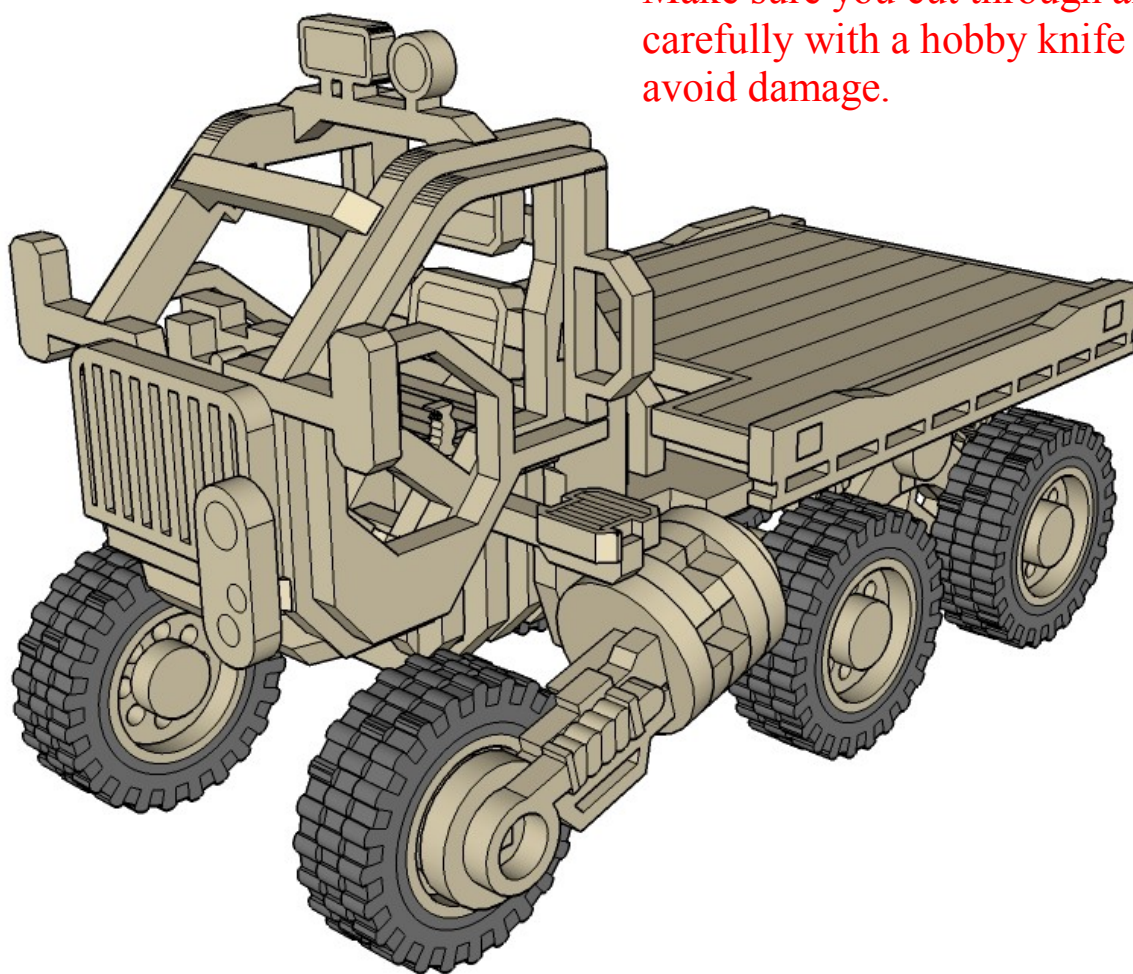
III. Parts may be a very tight fit, slight trimming or sanding of parts may be needed for ease of assembly.

Construction

Slot the parts together as shown by the pictures below, applying glue wherever there is a connection.

Allow the model to completely dry before painting it. This is a complex kit with many small parts. Allowing each section to dry

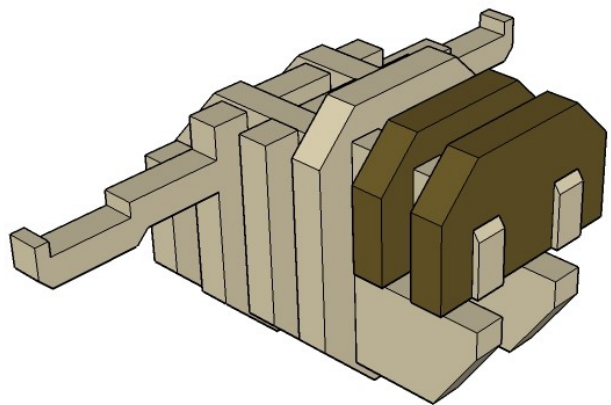
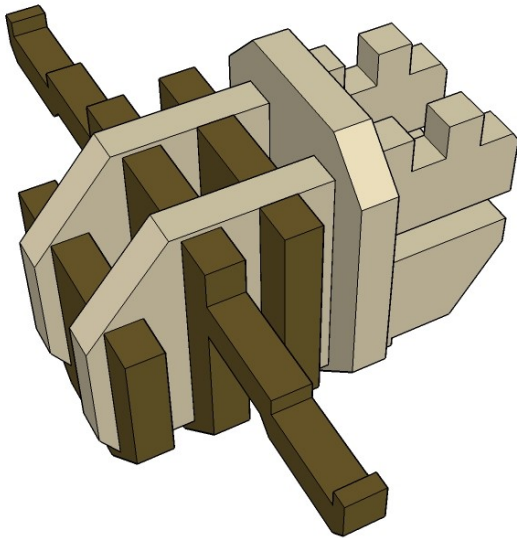
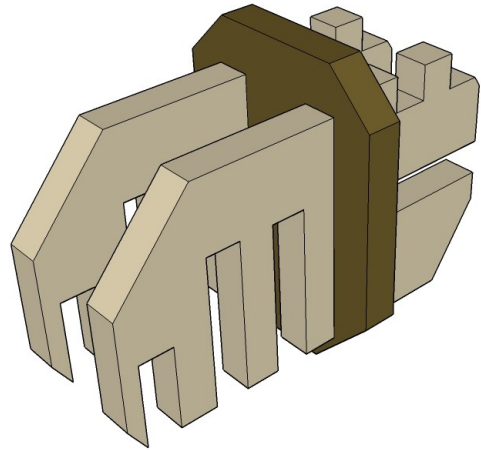
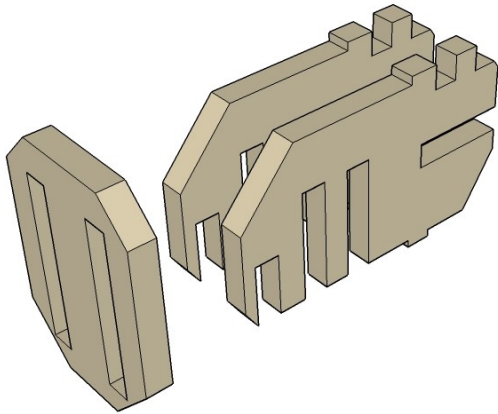
Some parts of this kit are very fine, or have engraving very close to edges. Make sure you cut through any tabs carefully with a hobby knife first to avoid damage.

**Modelling Tip:**

Some of the smaller, heavily engraved panels, such as the foot plates, have a tendency to de-laminate or chip if not handled with extreme care. I have found a small drop of thin super-glue on the surface of the part and letting it soak in solves this problem nicely.

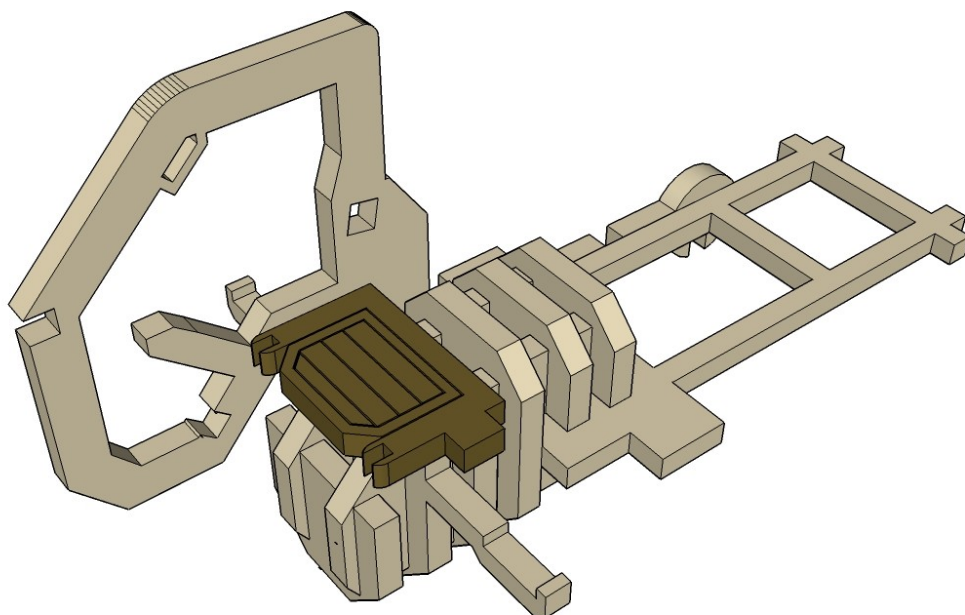
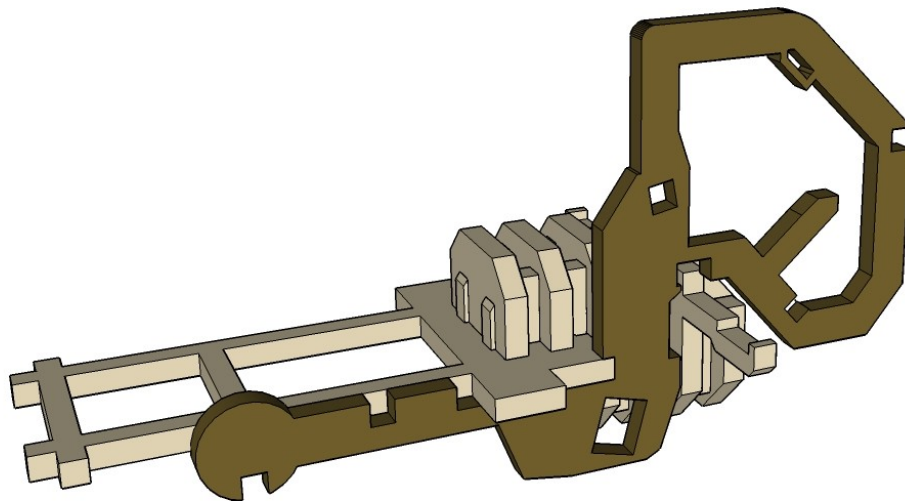
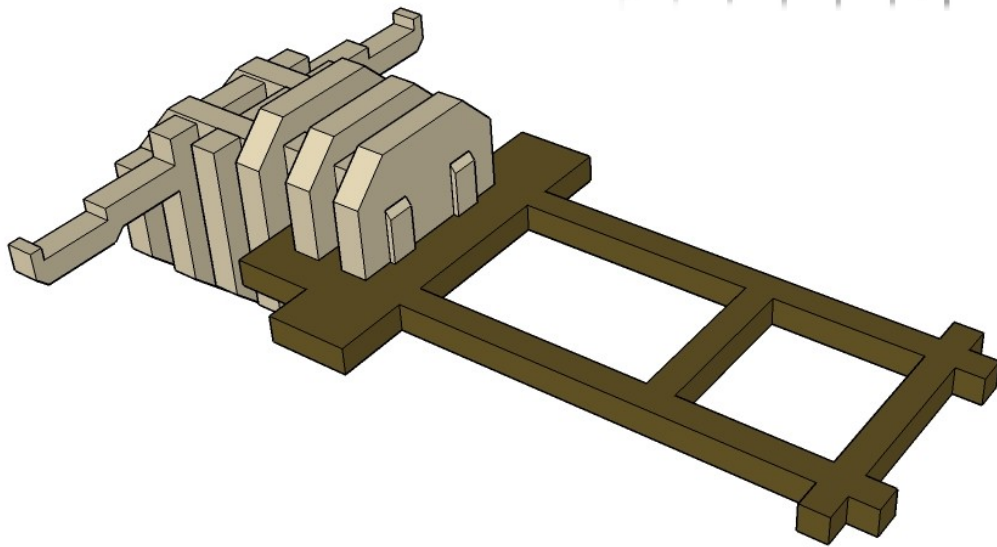
CNC WORKSHOP

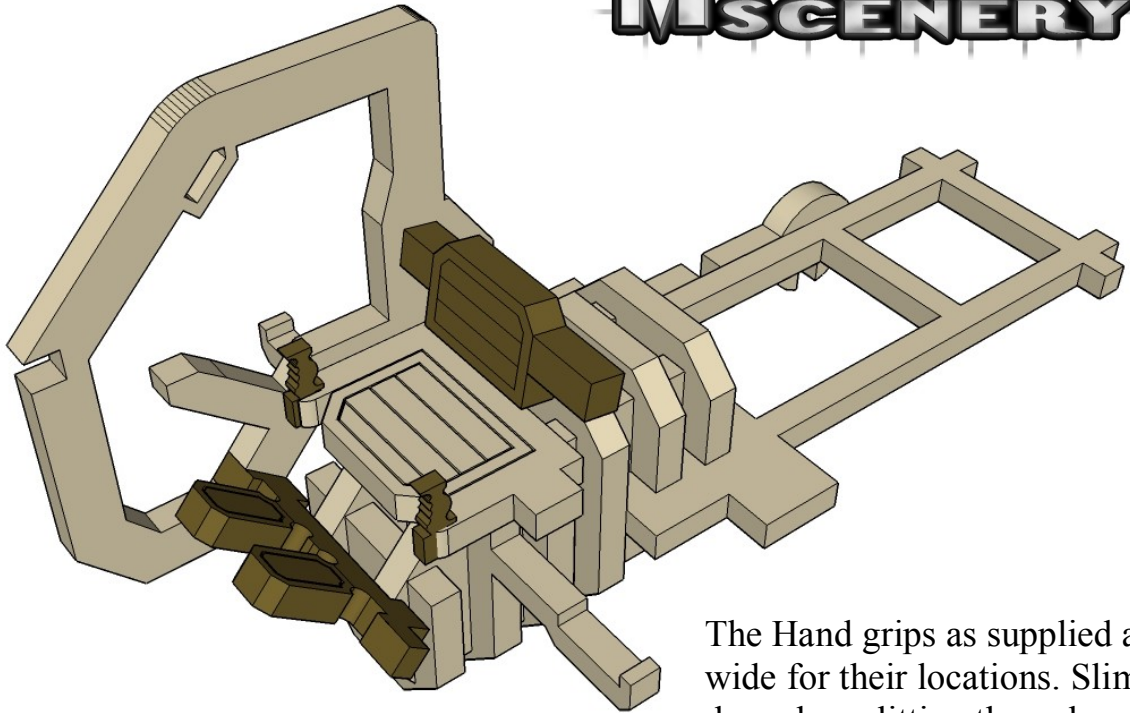
MINIATURE SCENERY



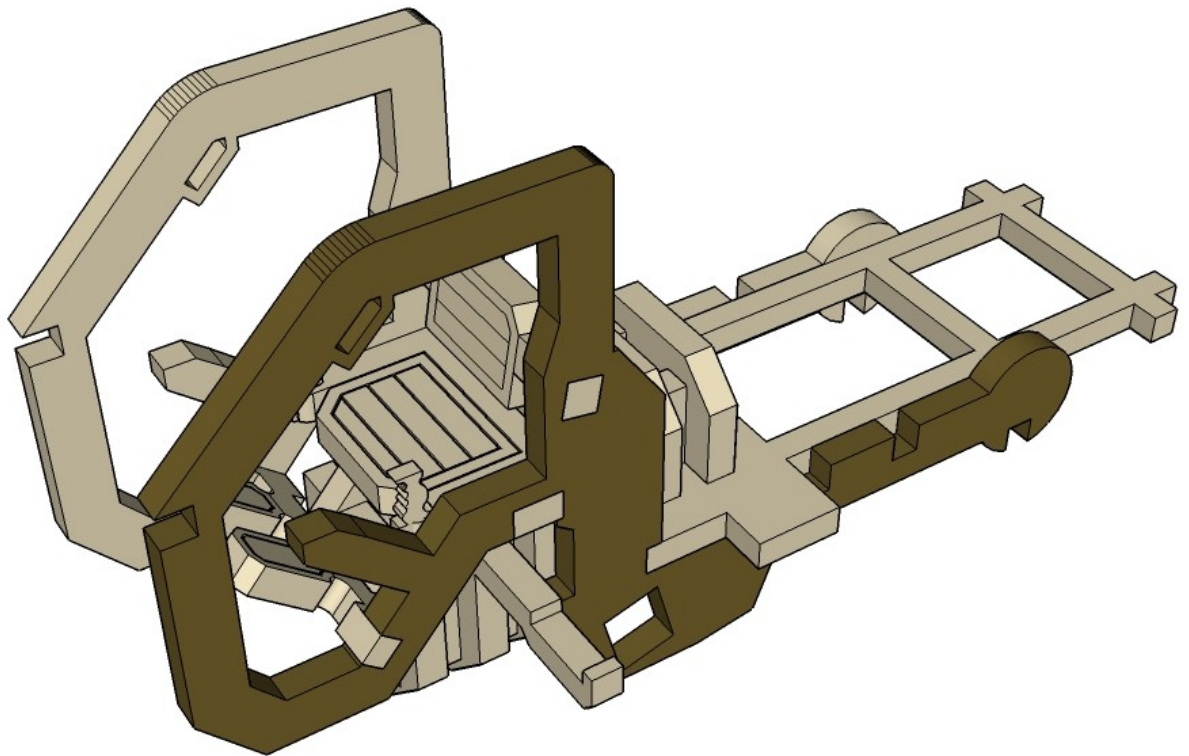
CNC WORKSHOP

MINIATURE SCENERY

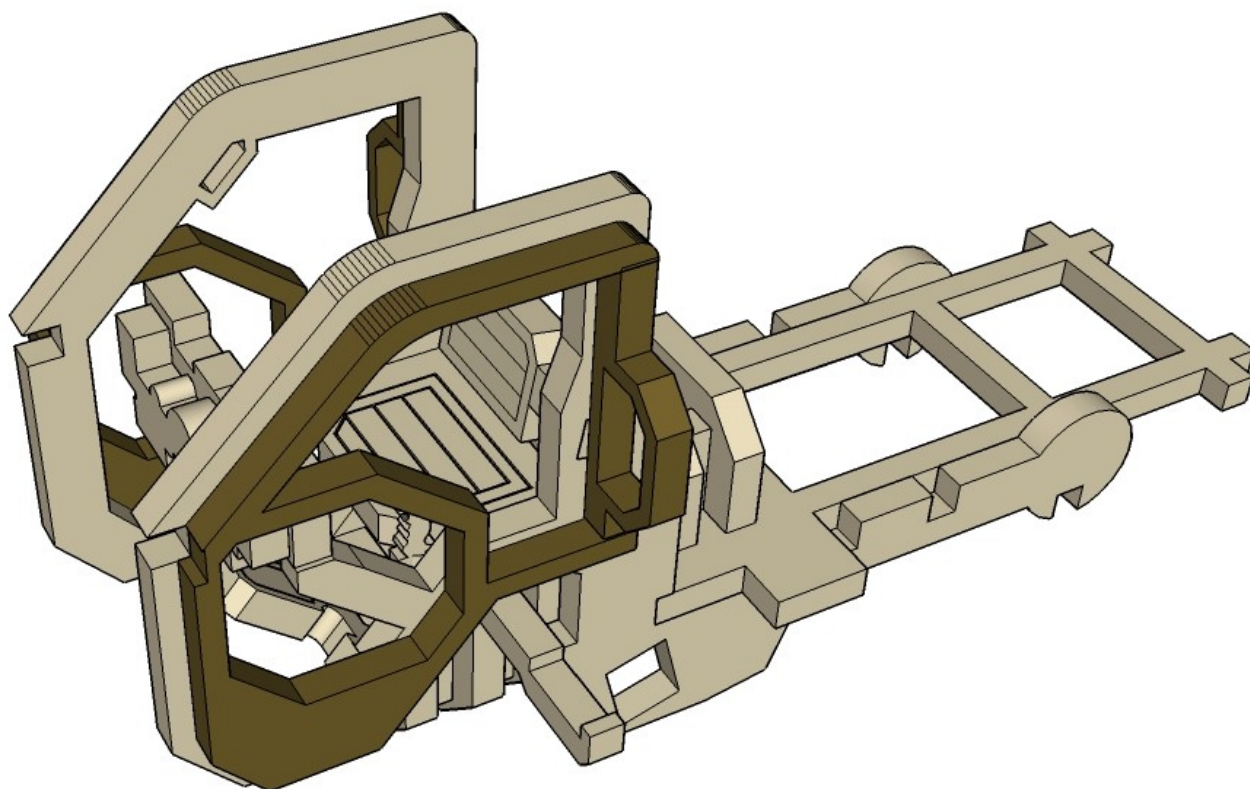
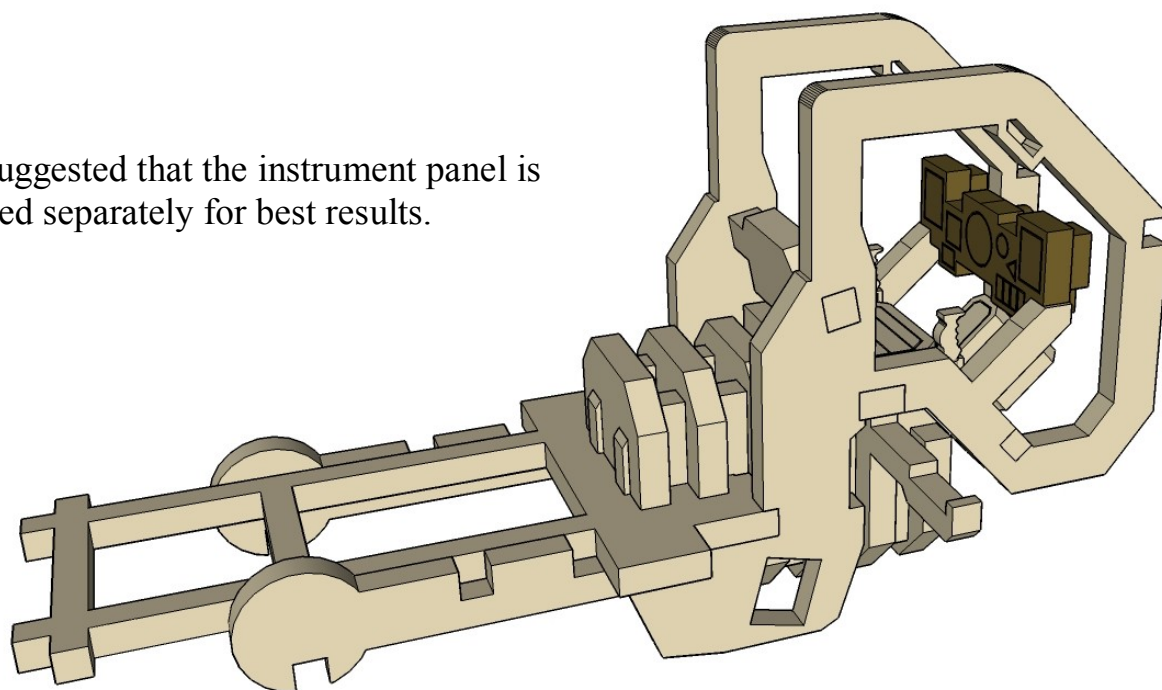




The Hand grips as supplied are too wide for their locations. Slim them down by splitting them down the middle with a sharp hobby knife. (don't worry, there are plenty of spares)

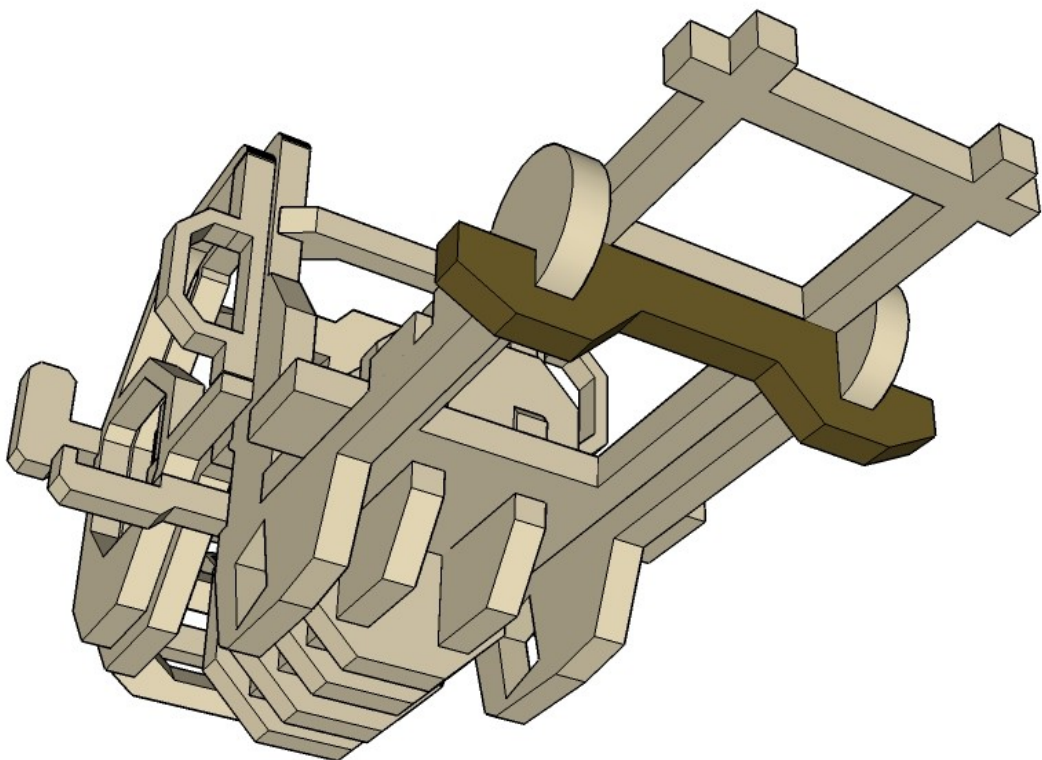
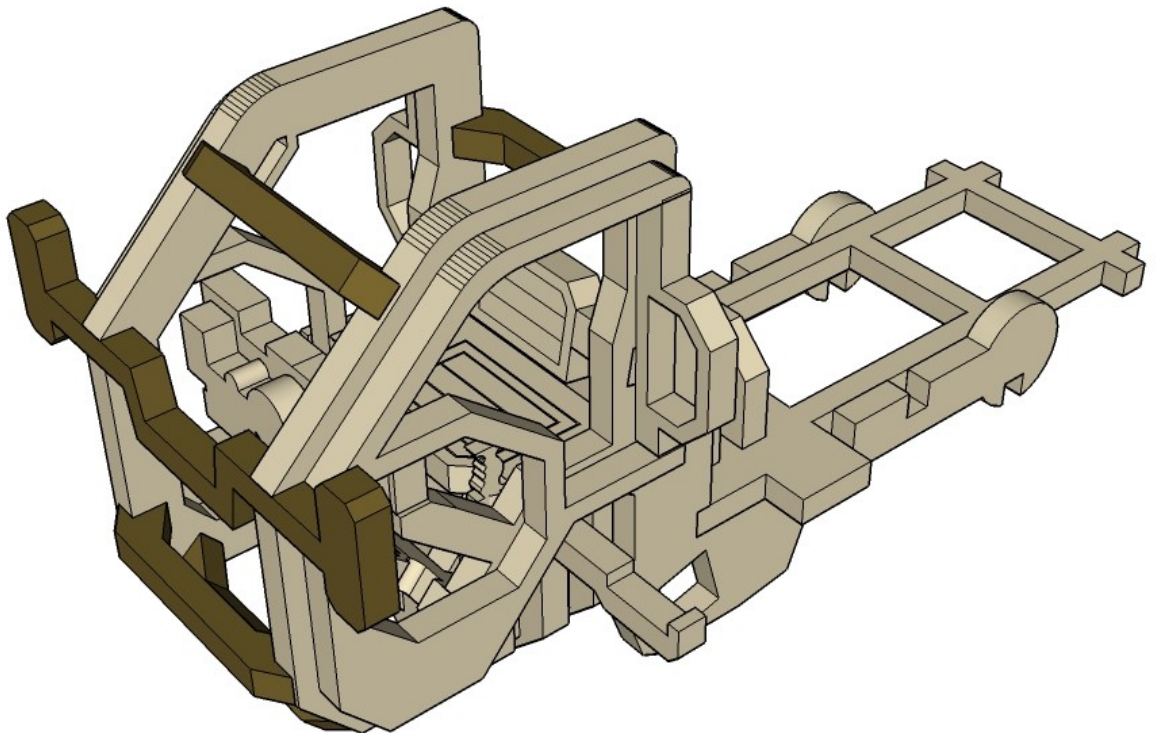


It's suggested that the instrument panel is painted separately for best results.



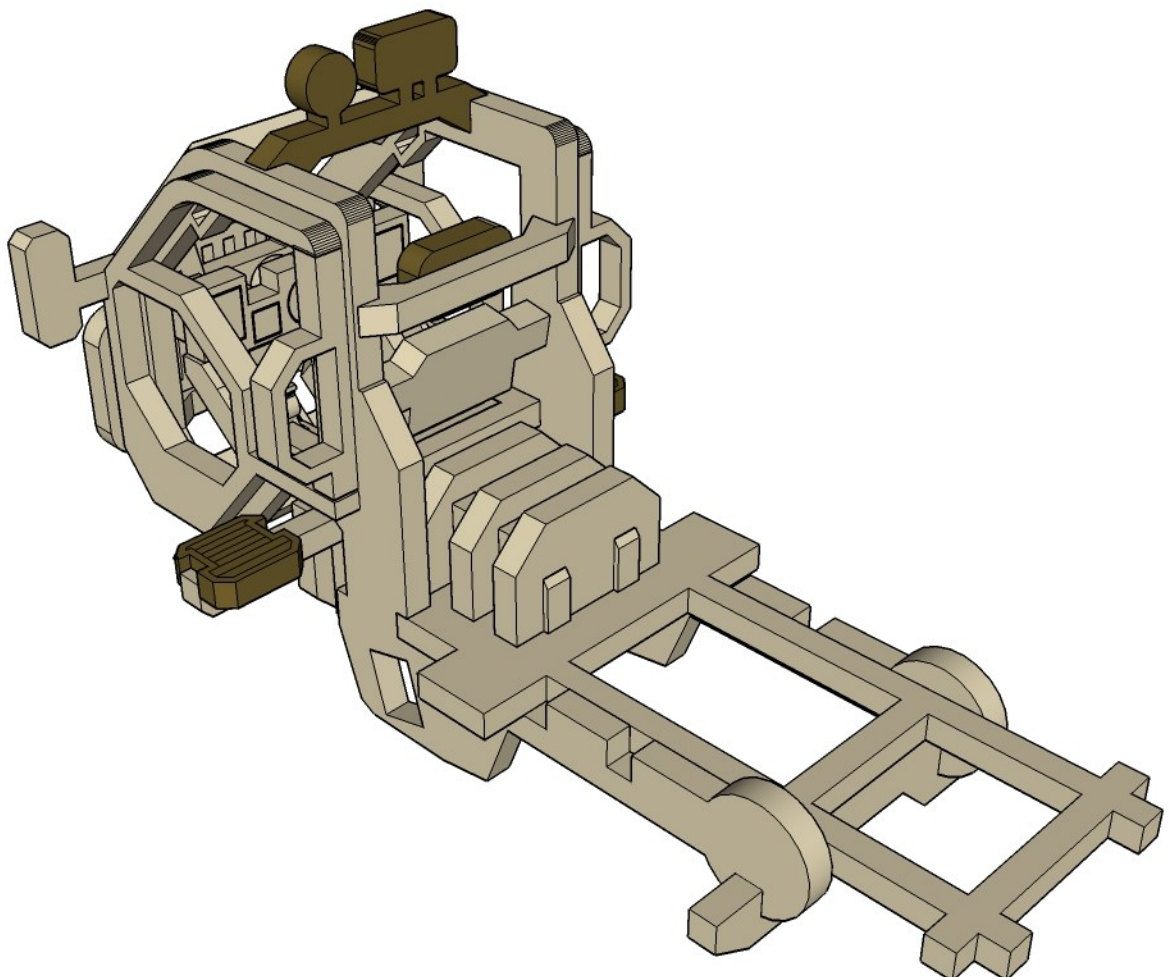
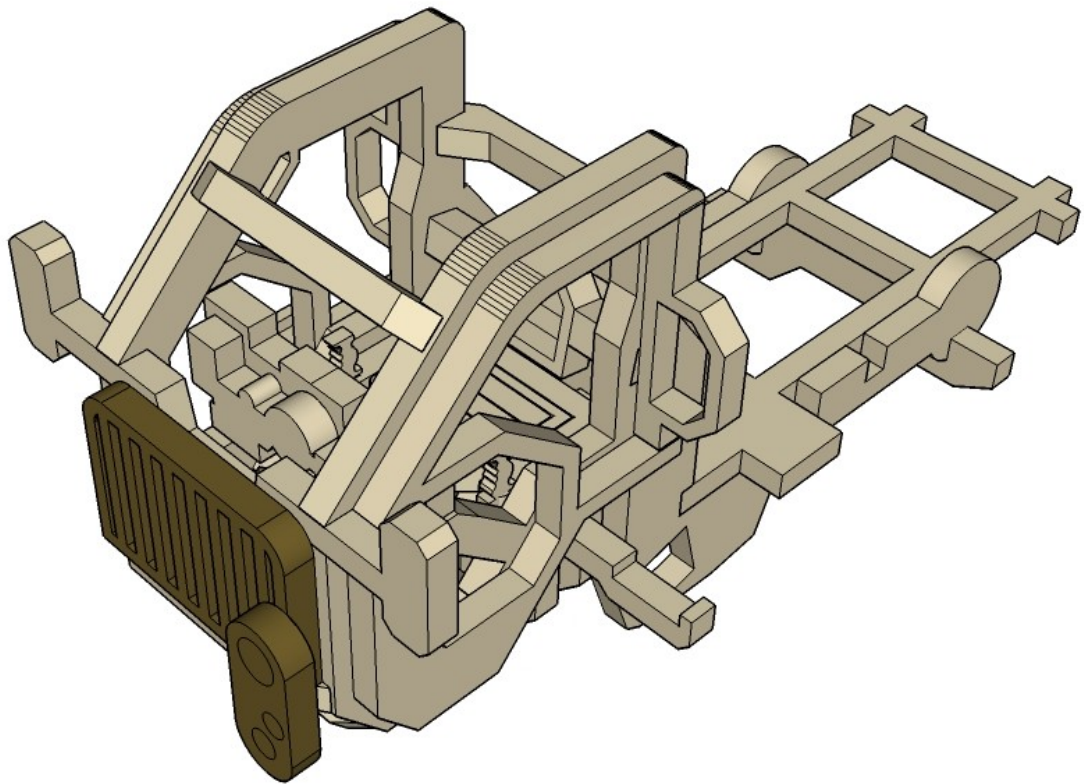
CNC WORKSHOP

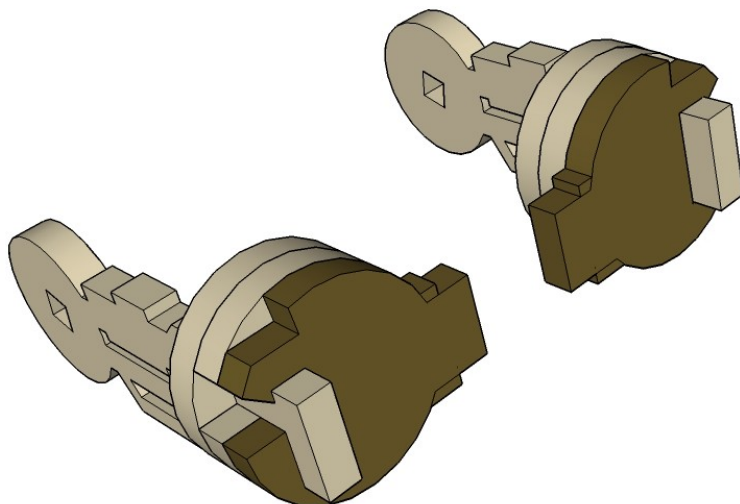
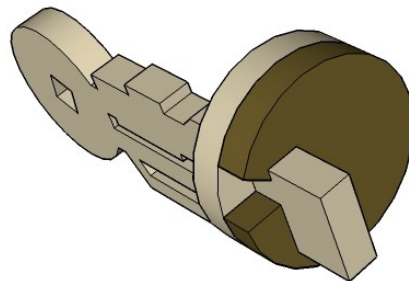
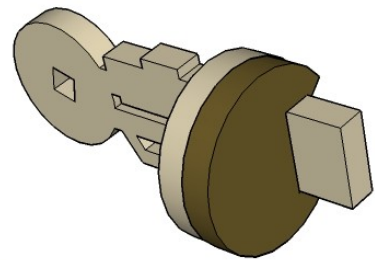
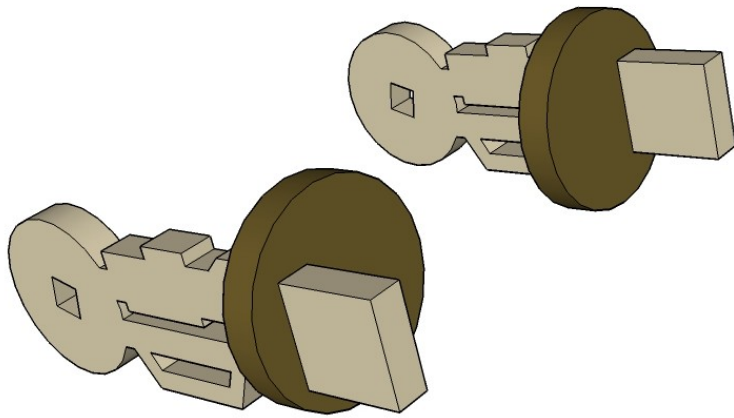
MINIATURE SCENERY

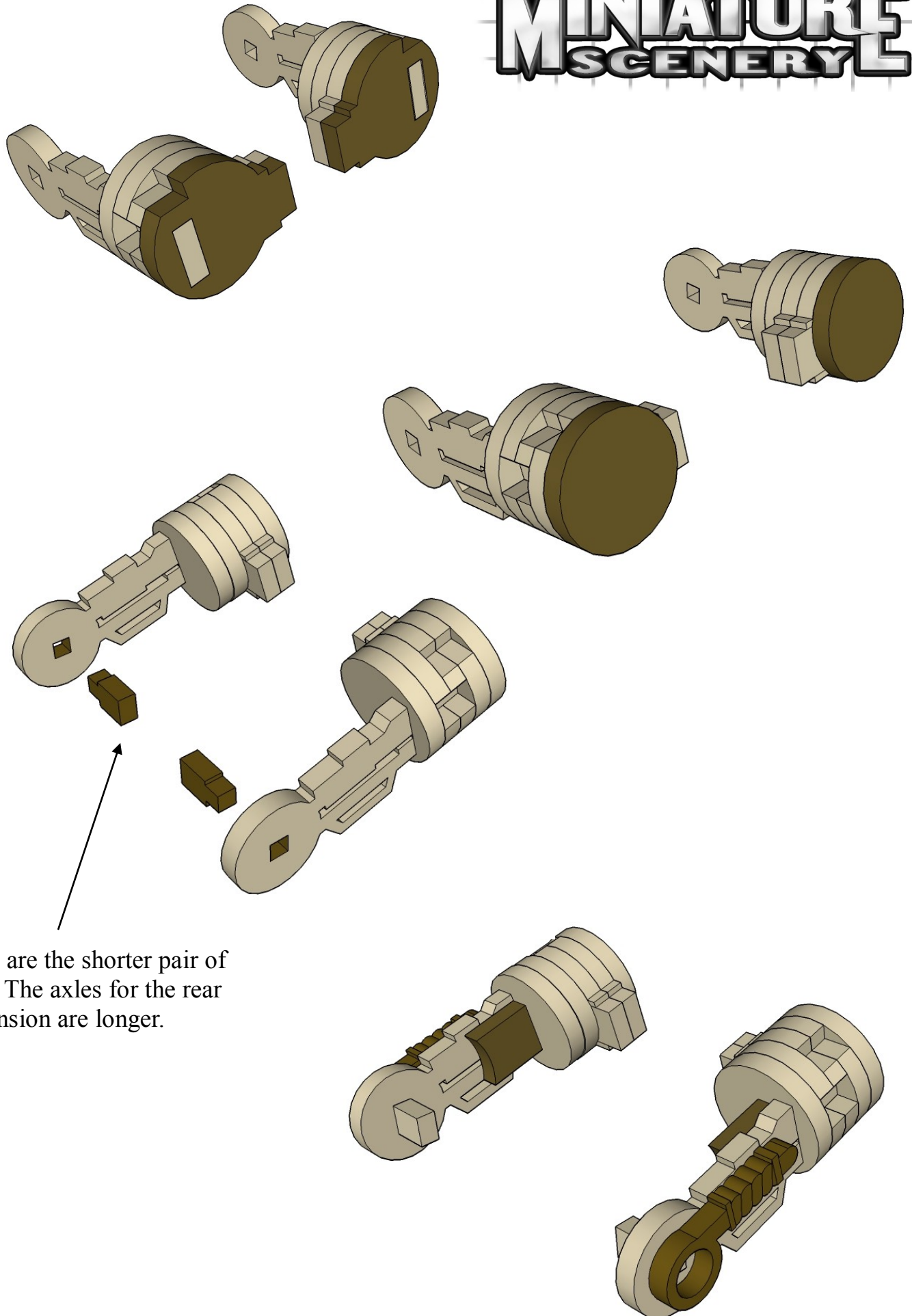


CNC WORKSHOP

MINIATURE SCENERY



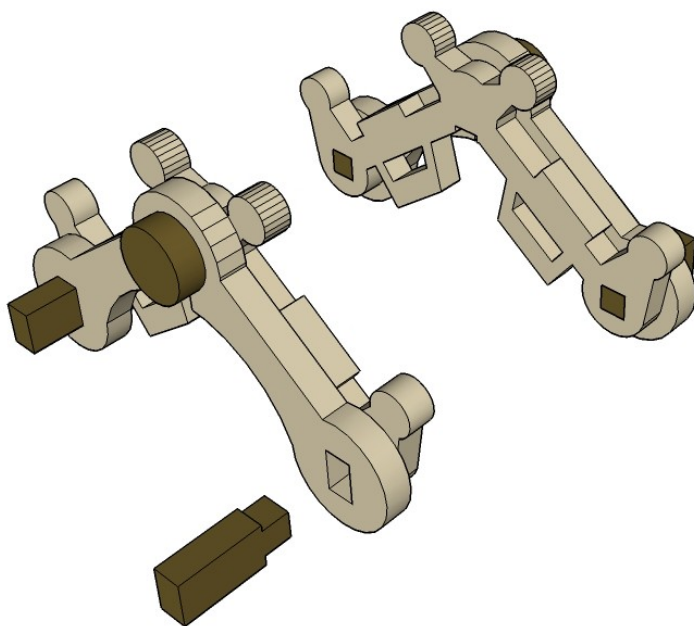
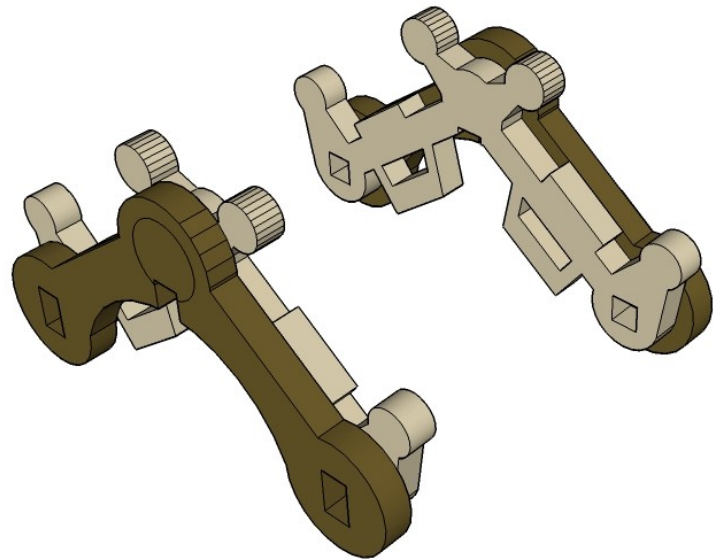
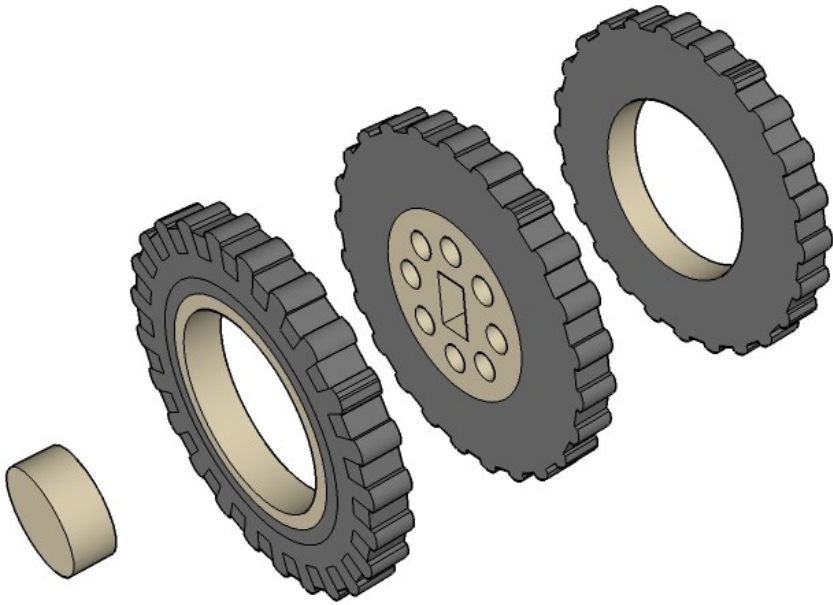




These are the shorter pair of axles, The axles for the rear suspension are longer.

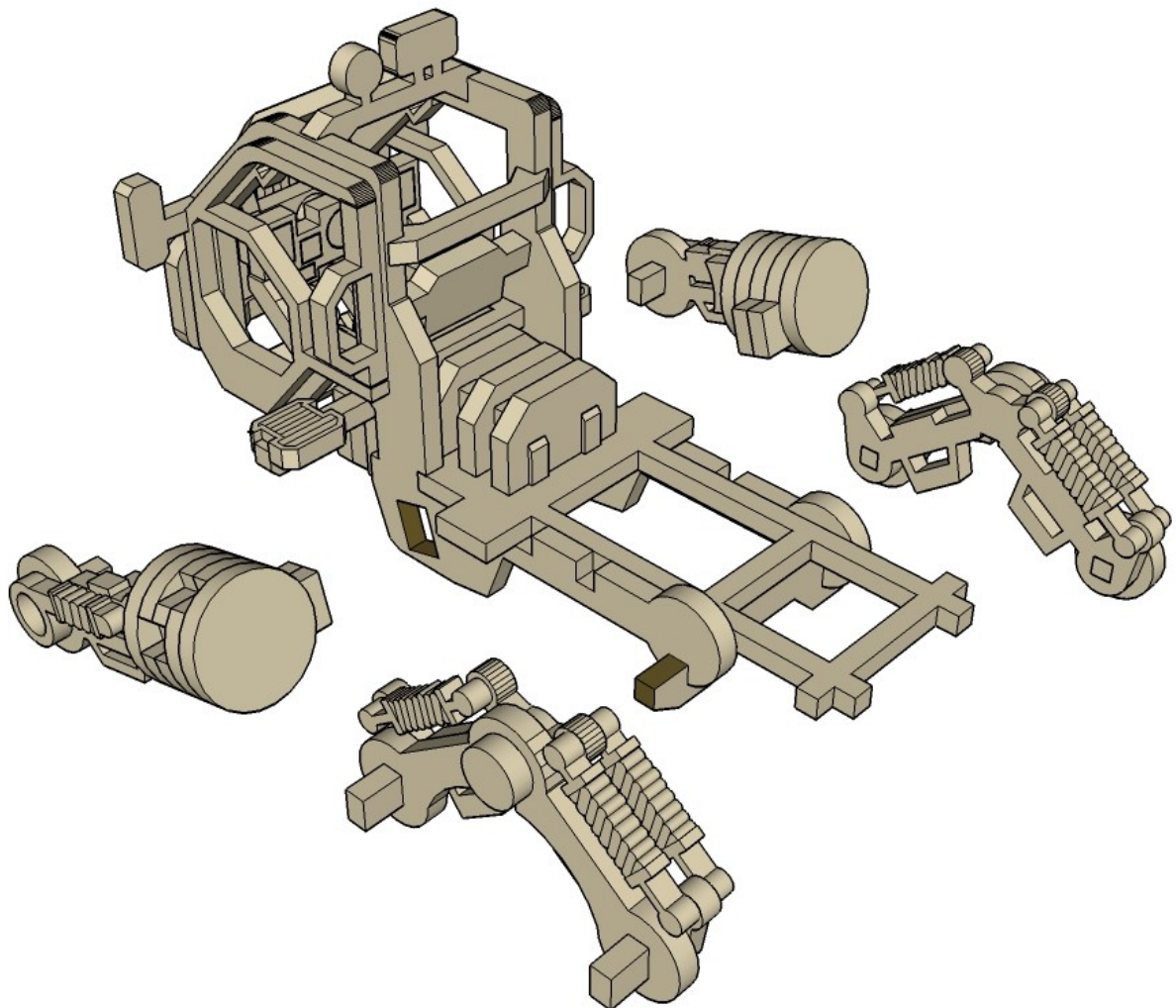
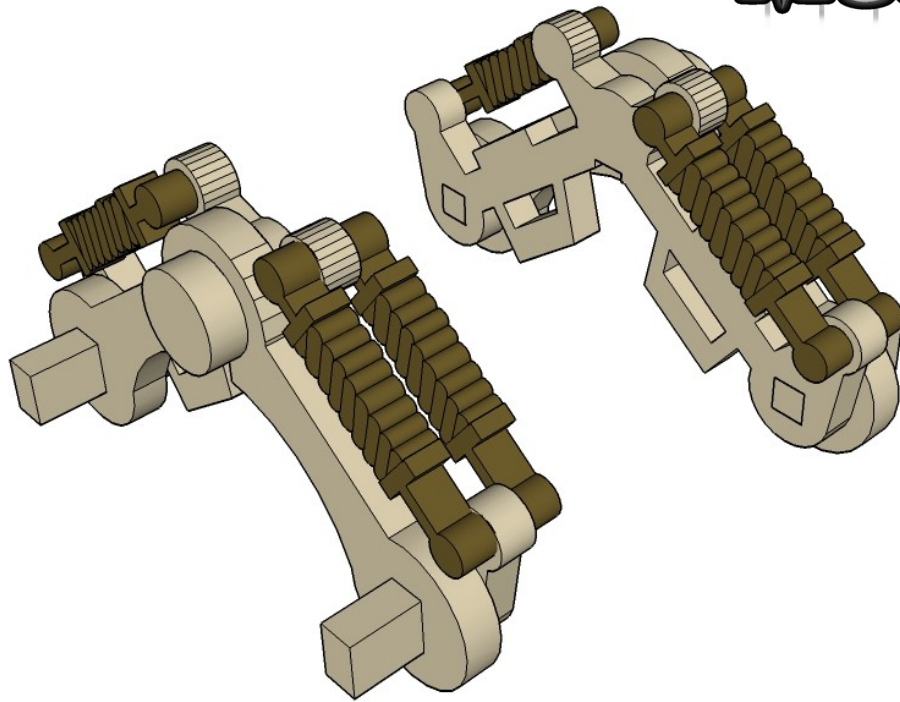
CNC WORKSHOP

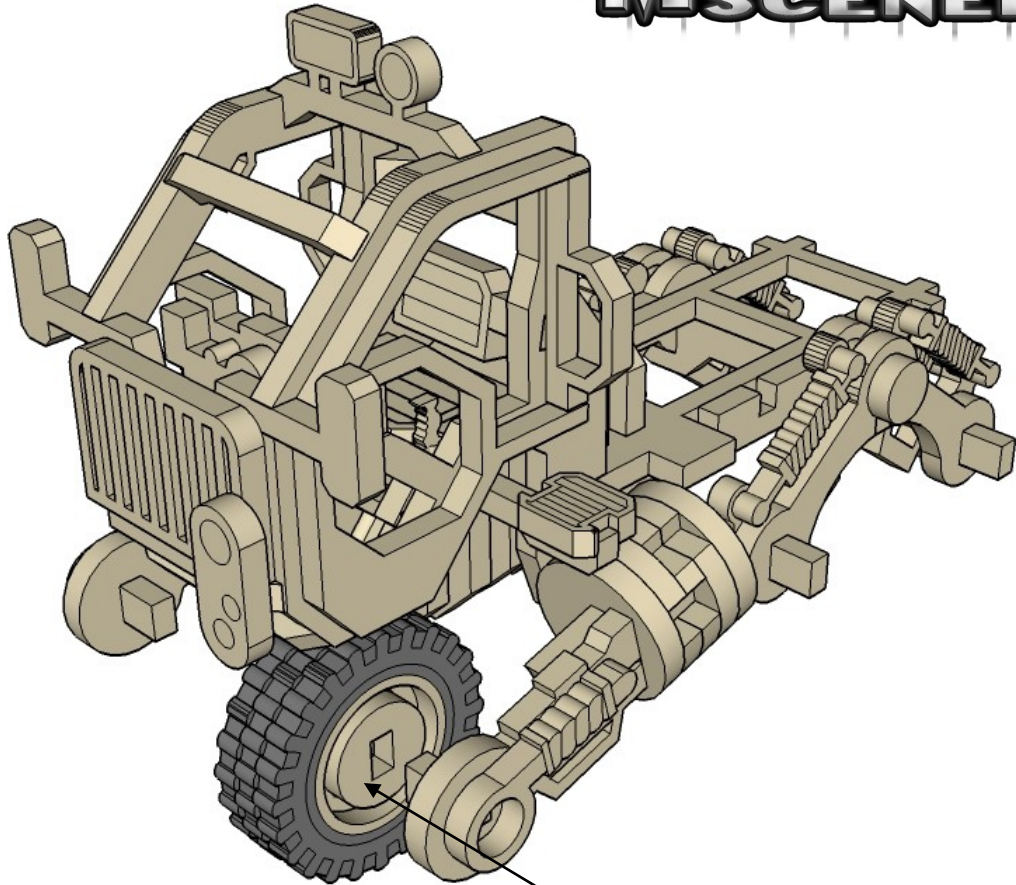
MINIATURE SCENERY



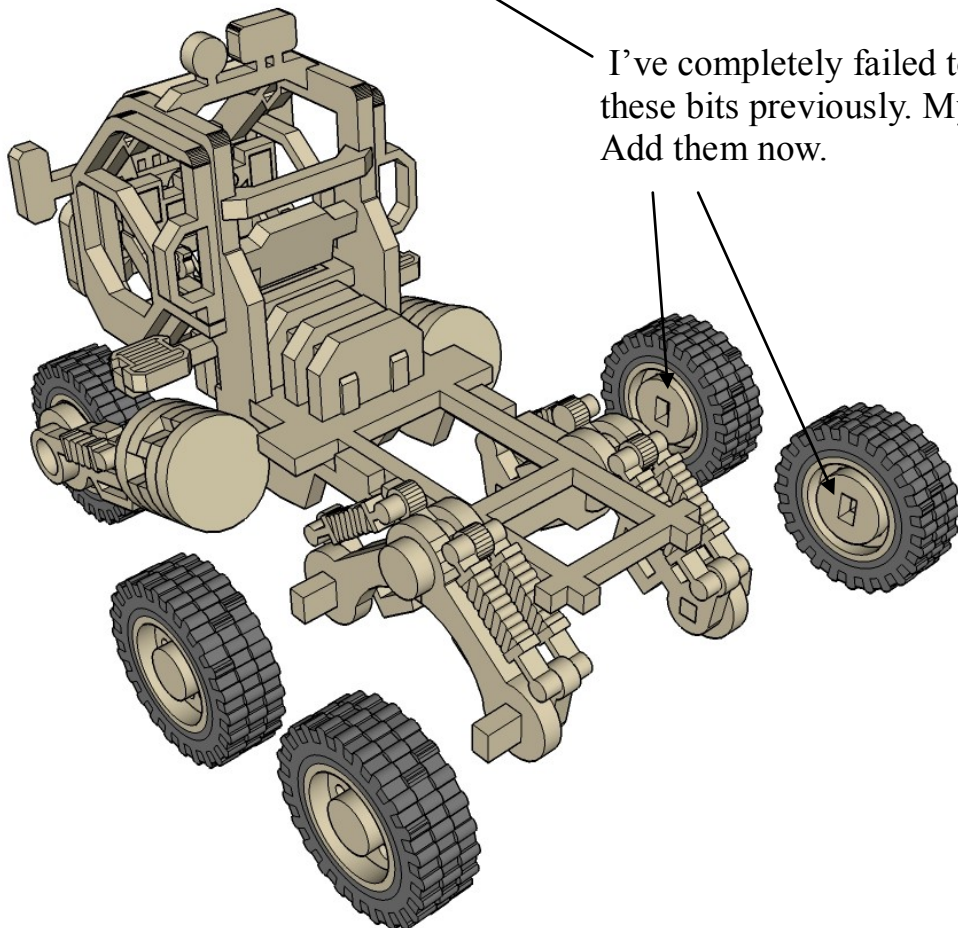
CNC WORKSHOP

MINIATURE SCENERY



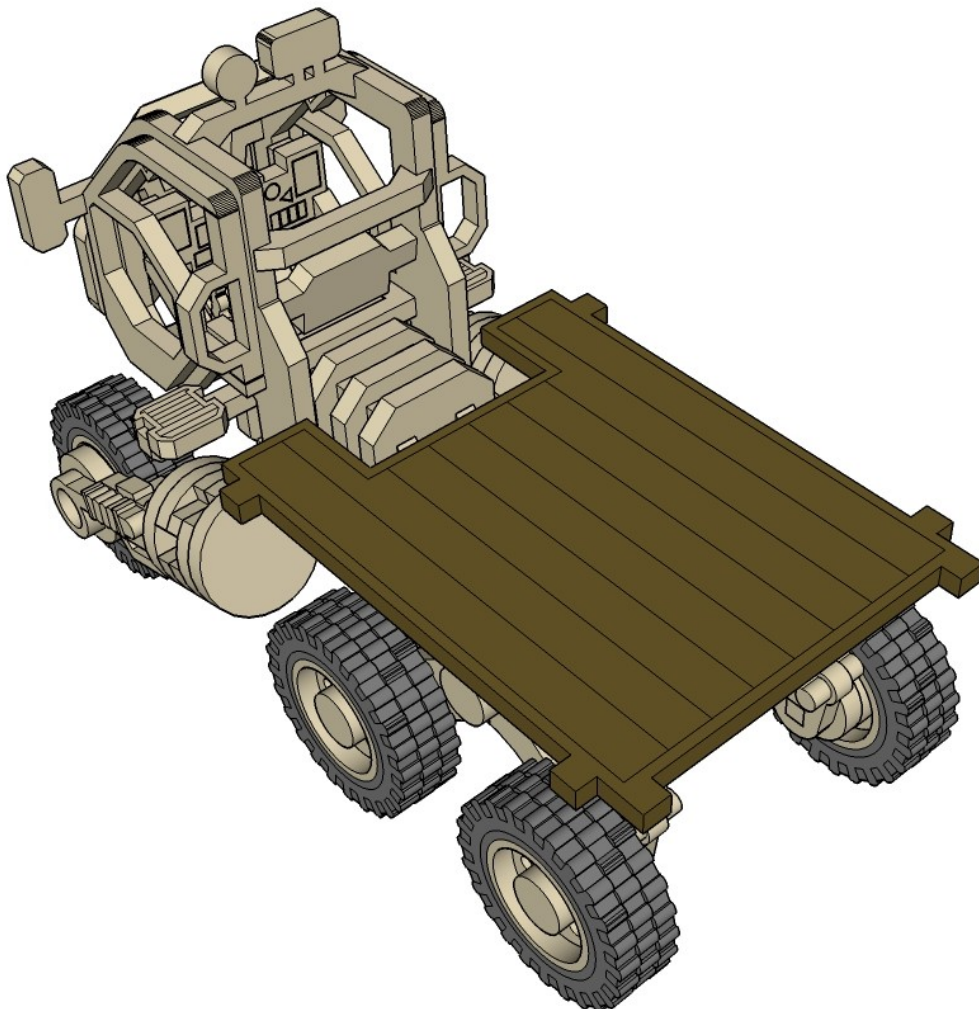
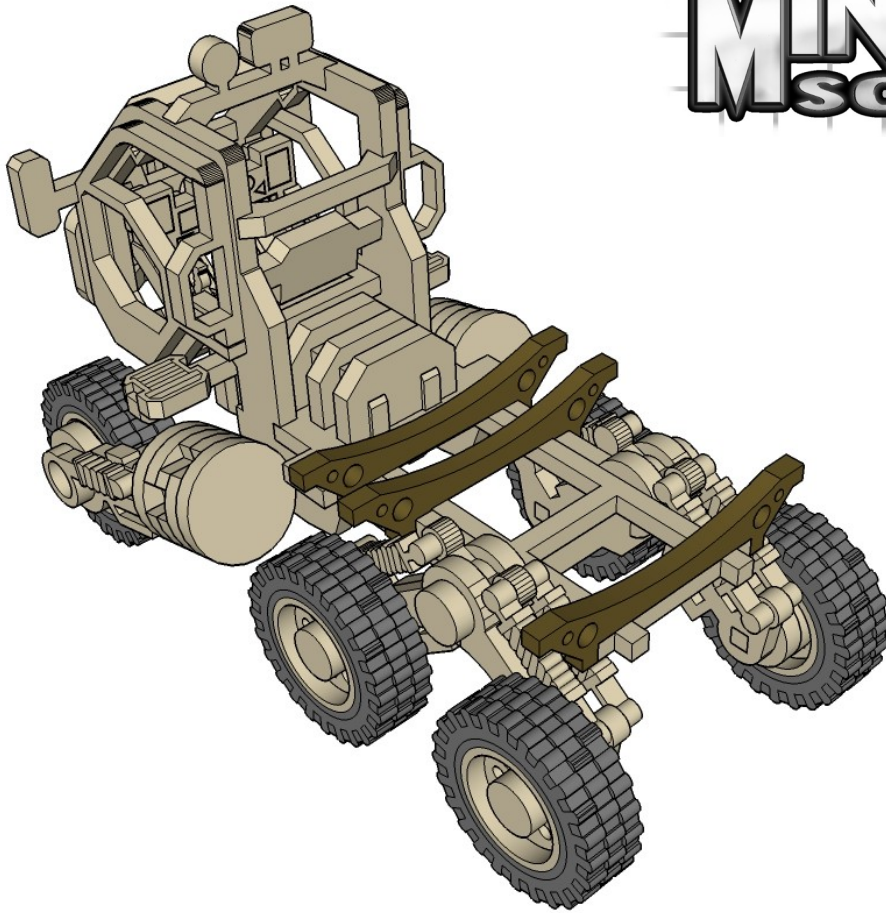


I've completely failed to show these bits previously. My bad. Add them now.



CNC WORKSHOP

MINIATURE SCENERY



CNC WORKSHOP

MINIATURE SCENERY

