

# MINIATURE SCENERY

## HUMPTI GARBAGE



MINIATURE SCENERY IS DESIGNED FOR 28MM MINIATURES,  
IDEAL FOR GAMERS AND COLLECTORS



FOR DETAILED, EASY TO FOLLOW INSTRUCTIONS VISIT  
[WWW.MINIATURESCENERY.COM](http://WWW.MINIATURESCENERY.COM)



Contents may contain small parts. Not suitable for children under 6 years old. The exclusive copyright on the model designs and components within this case is the property of Miniature Scenery, 2016. All rights reserved.



# MINIATURE SCENERY

## PREPARATION

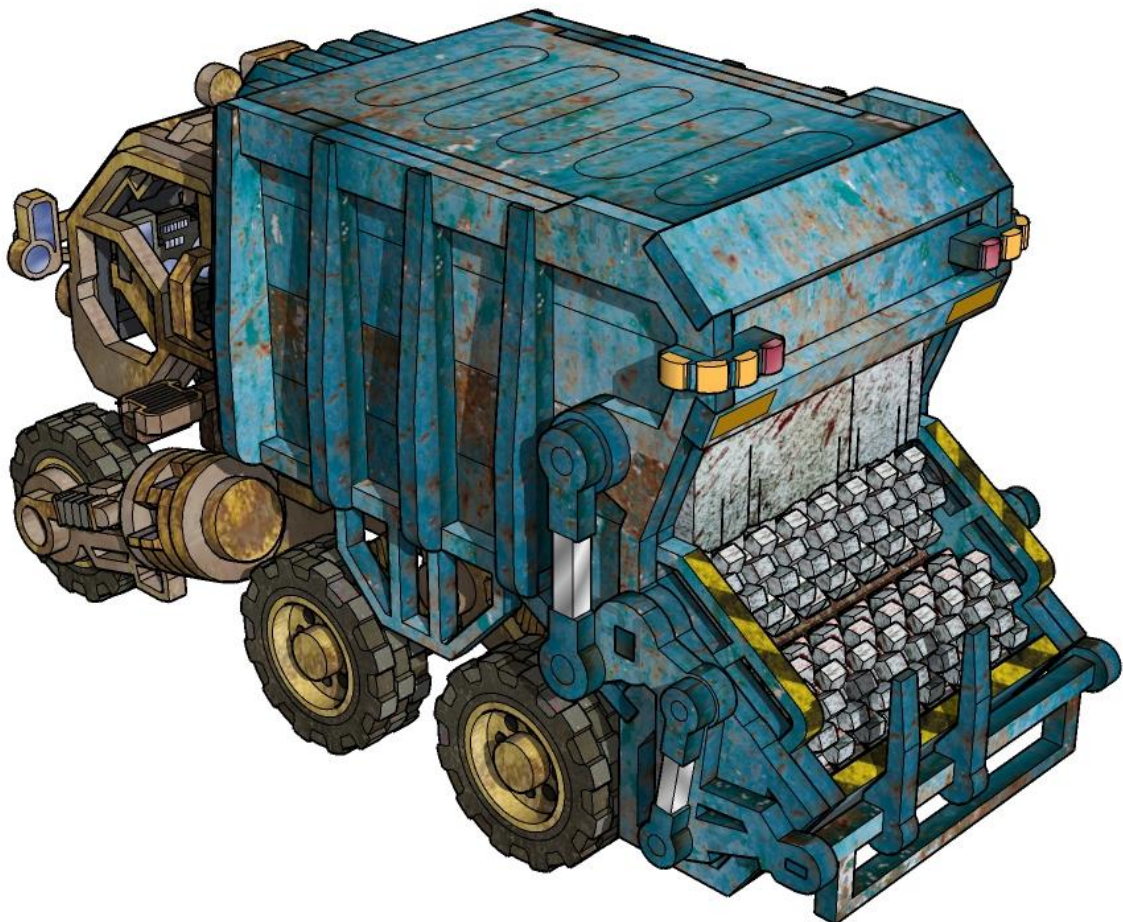
You will need:

- Cutting mat or something to protect your table.
- PVA/Wood glue or superglue if you prefer.
- Small file or sand paper.
- Small blade / hobby knife



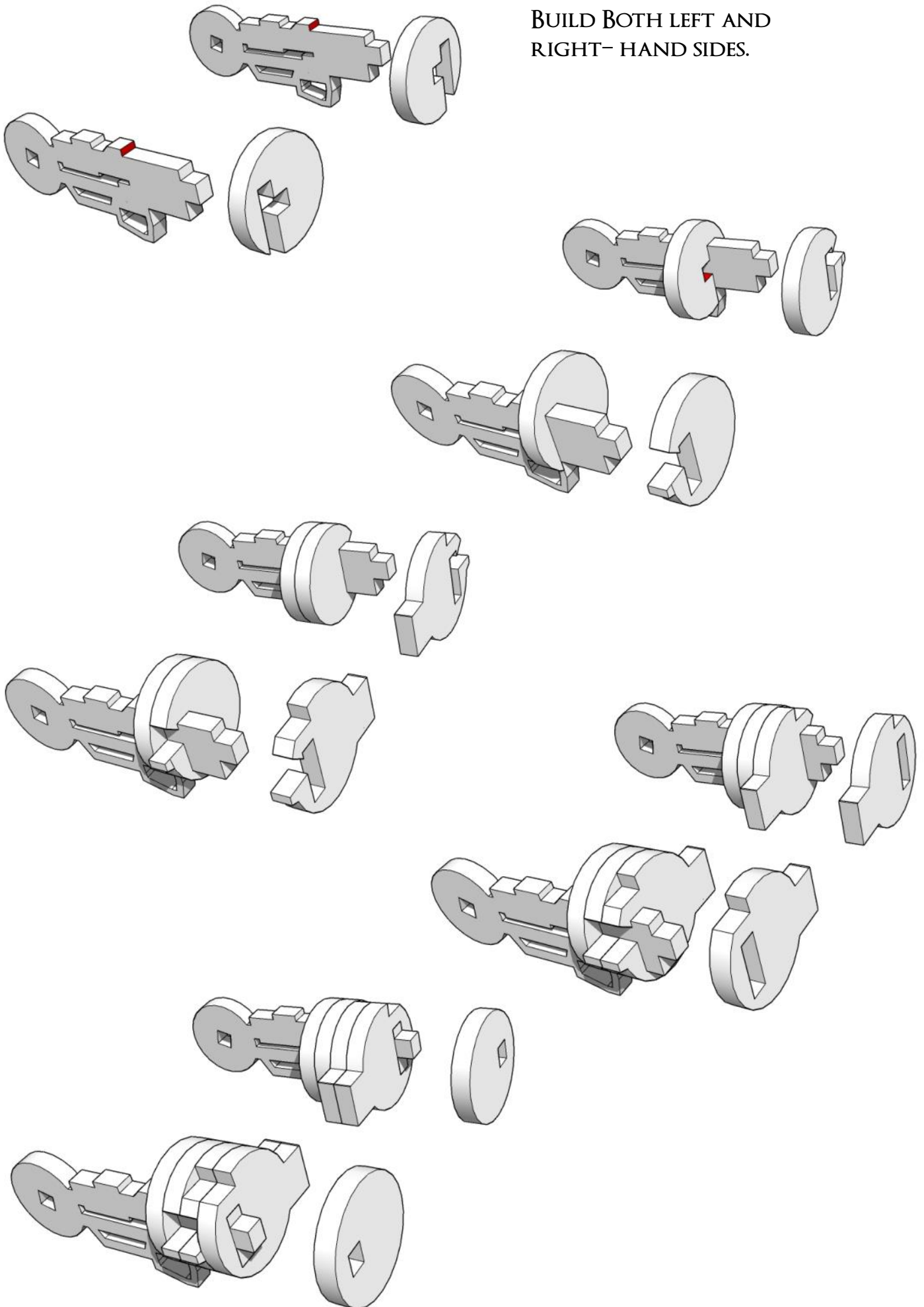
## GENERAL PROCESS

- Clear plenty of table space, you will need it.
- Parts should remove easily from the board by pressing through and popping them out. It's a good idea to cut through the tiny joins first though, and some parts (particularly smaller, more detailed parts) may need more careful persuasion.
- Use file or sand paper to remove the small bur caused by the connection to the frame.
- It's a good idea to familiarise yourself with how the pieces fit together before gluing.
- Slot the parts together as shown by the pictures below, applying glue wherever there is a connection. (unless shown otherwise)
- Parts may be a very tight fit, slight trimming or sanding of parts may be needed for ease of assembly.

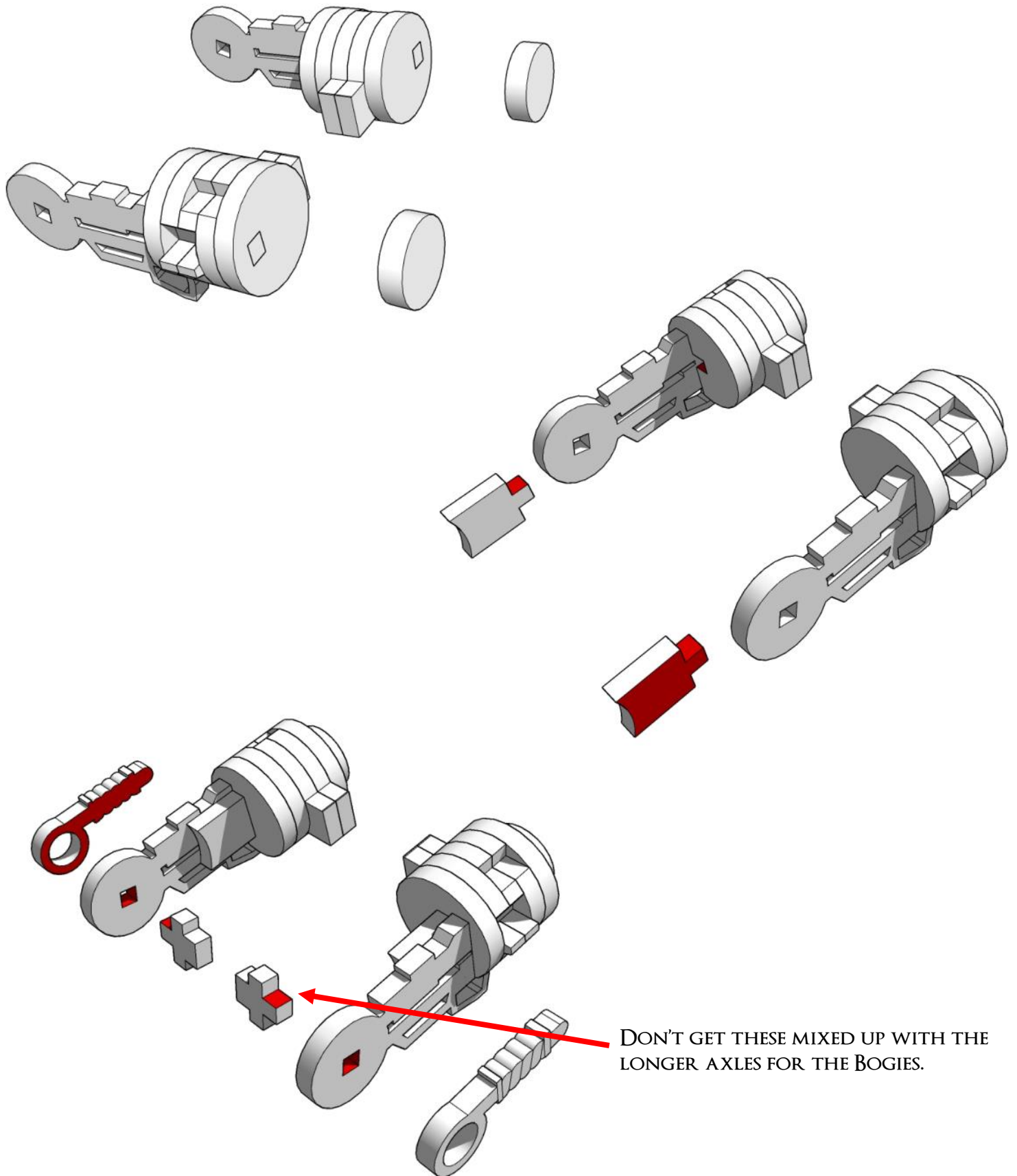


## FRONTS FORKS.

BUILD BOTH LEFT AND  
RIGHT- HAND SIDES.

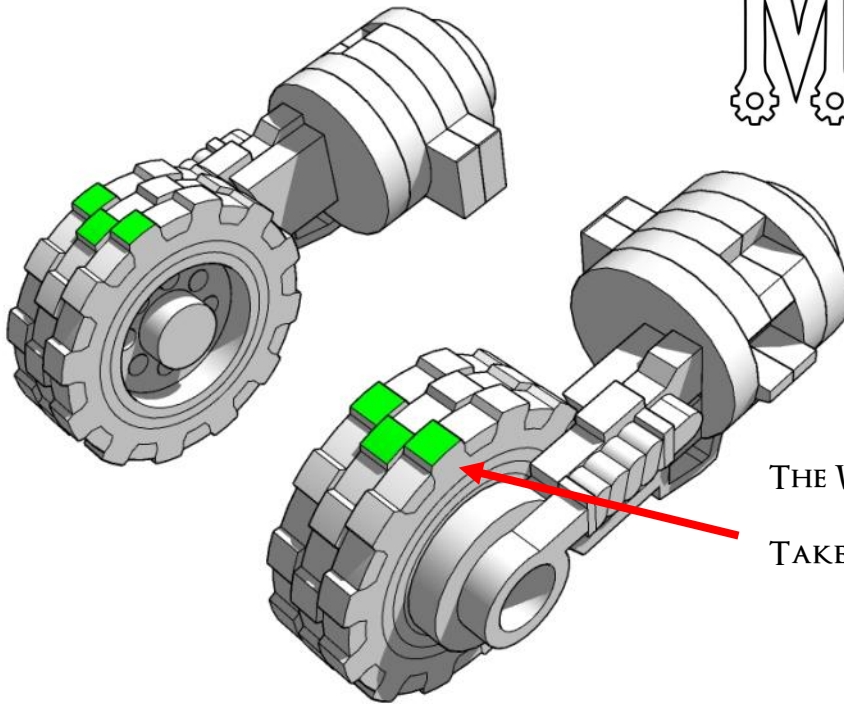


# MINIATURE SCENERY



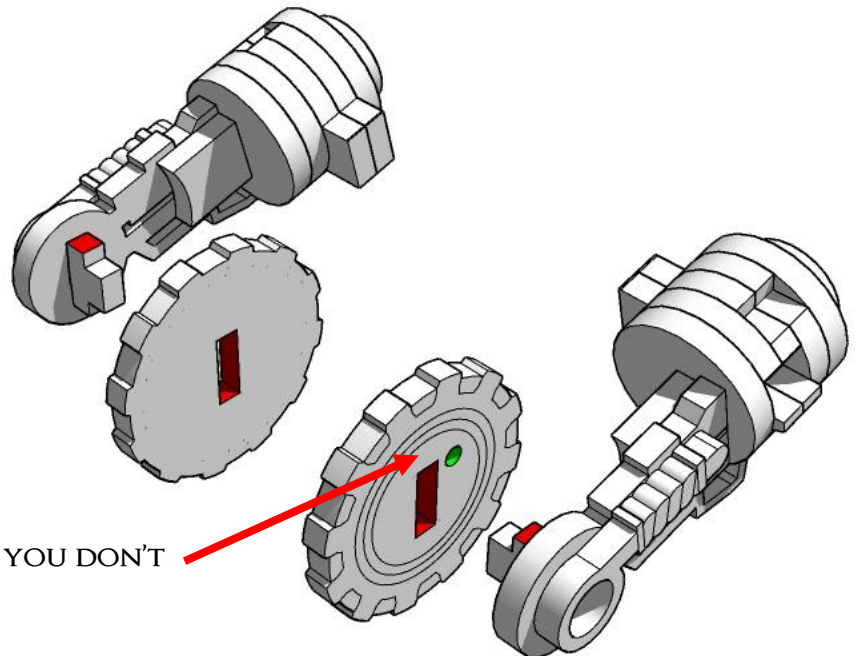


# MINIATURE SCENERY

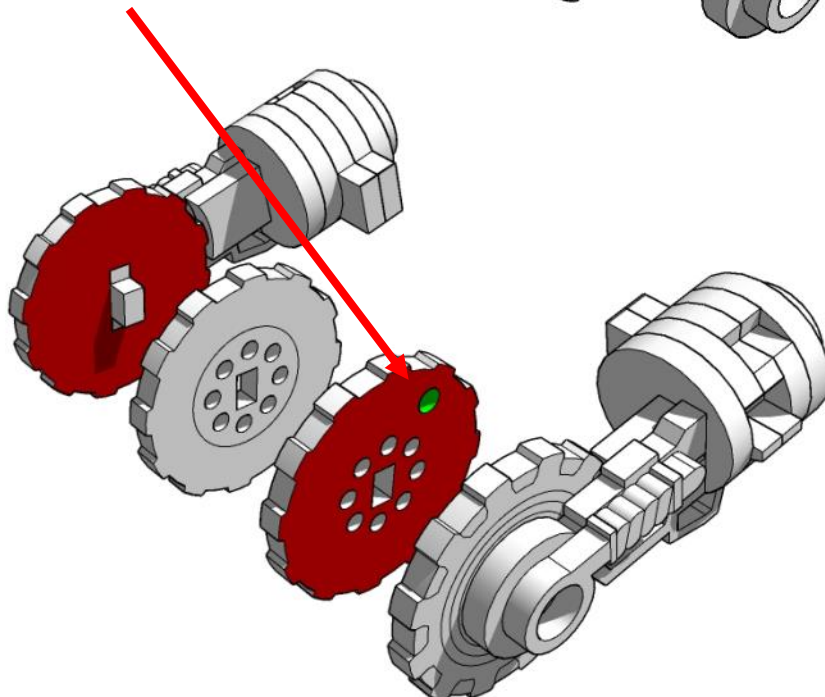


THE WHEELS IN THIS KIT ARE HANDED.

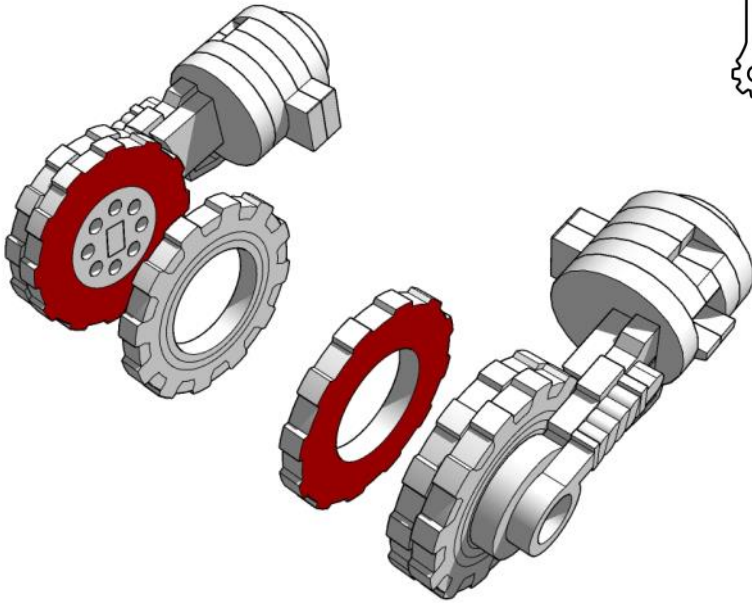
TAKE NOTE OF THE DIRECTION OF TREAD.



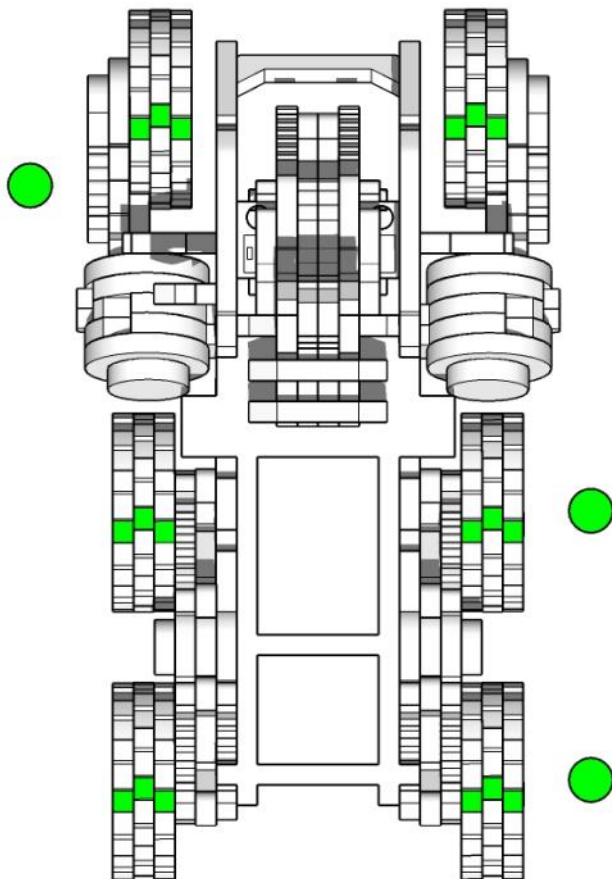
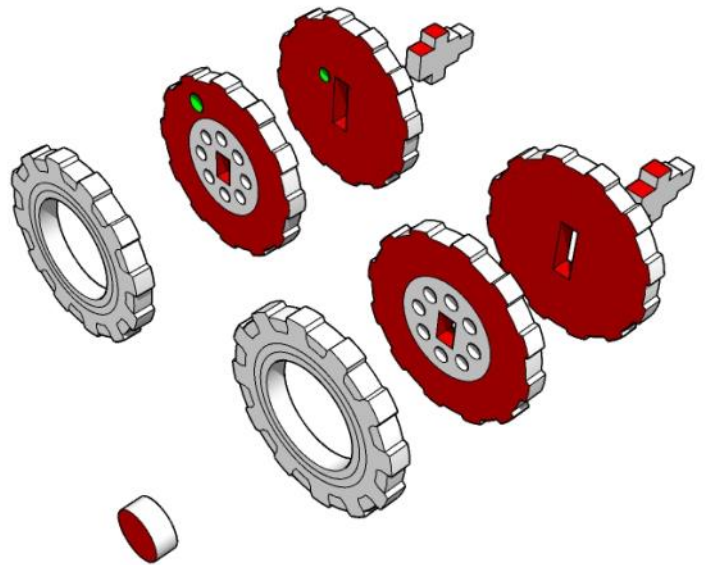
HOLE ON LEFT HAND SIDE SO YOU DON'T  
GET THEM MIXED UP.



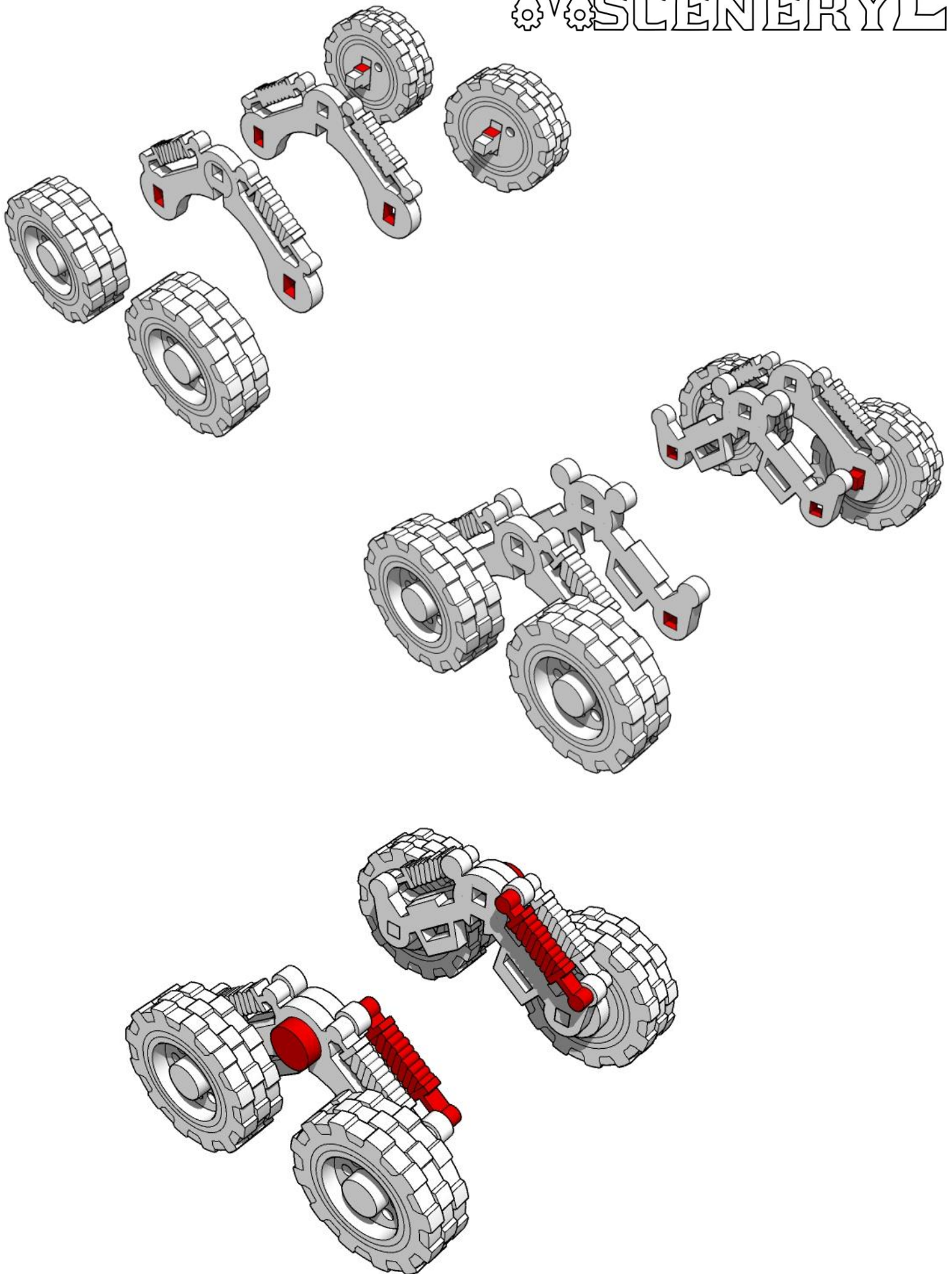
# MINIATURE SCENERY



THE WHEELS FOR THE REAR BOGIES ARE ALSO HANDED, MAKE TWO OF EACH. THE WHEELS WITH THE HOLES WILL GO ON THE RIGHT HAND SIDE THIS TIME.

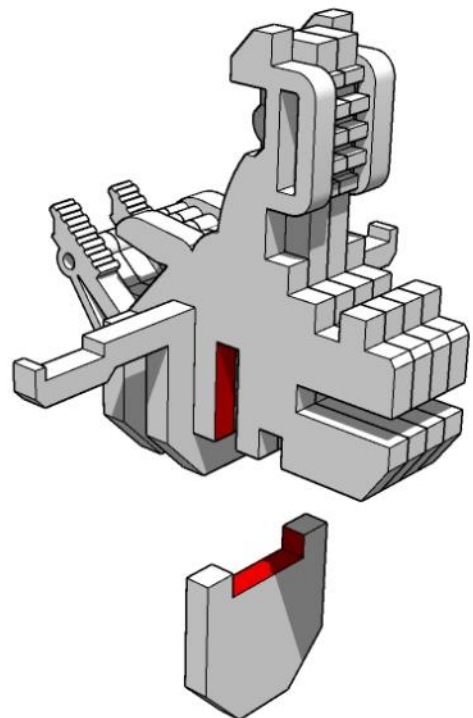
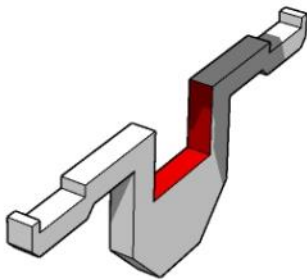
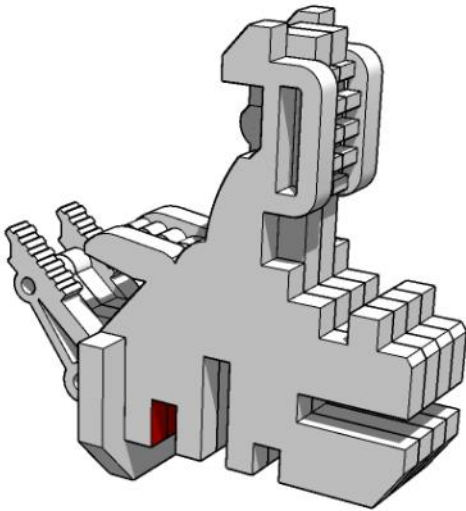
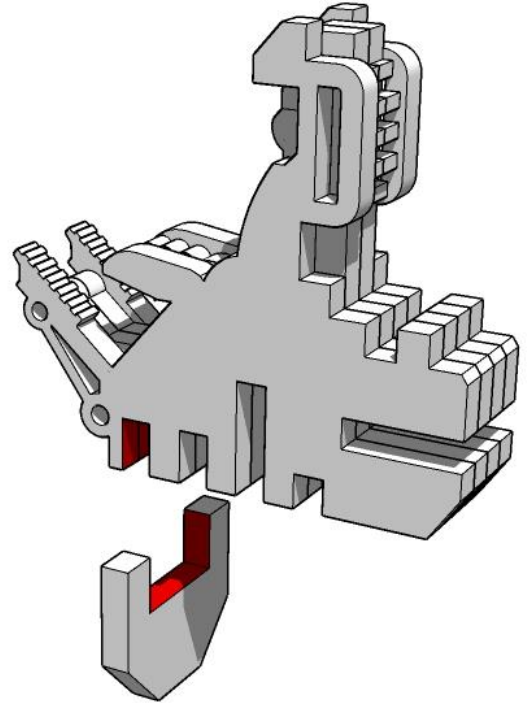
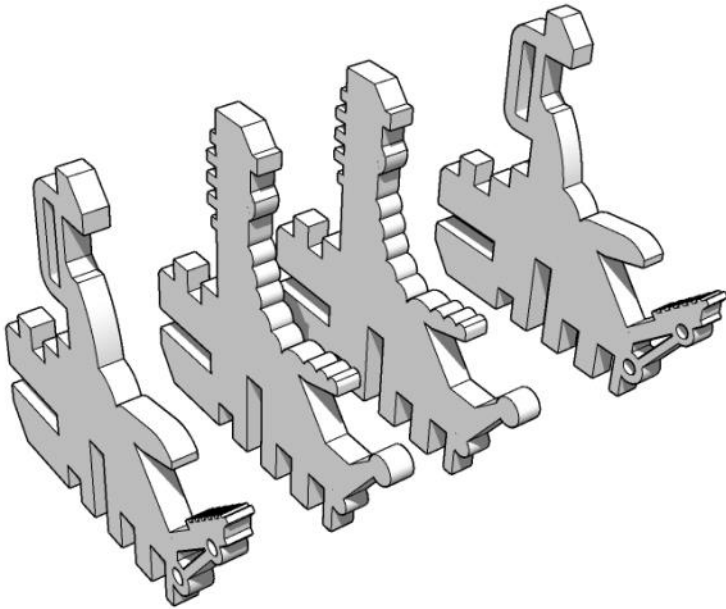


# MINIATURE SCENERY

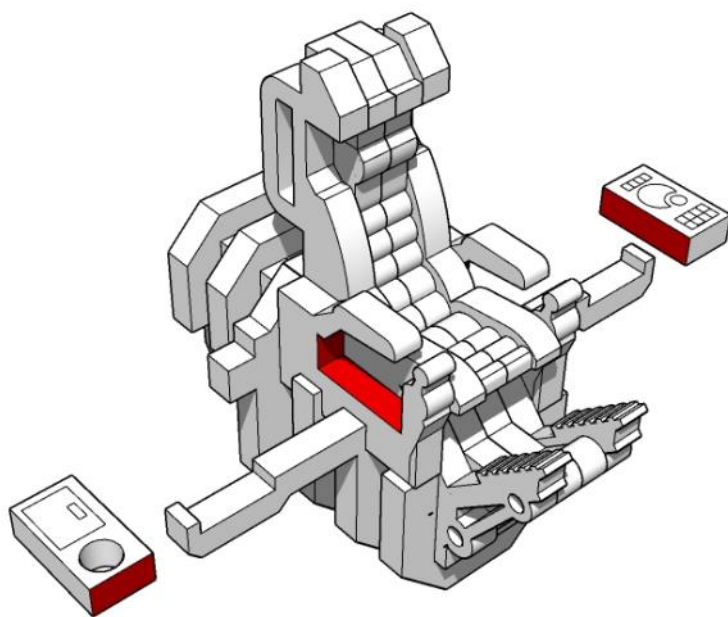
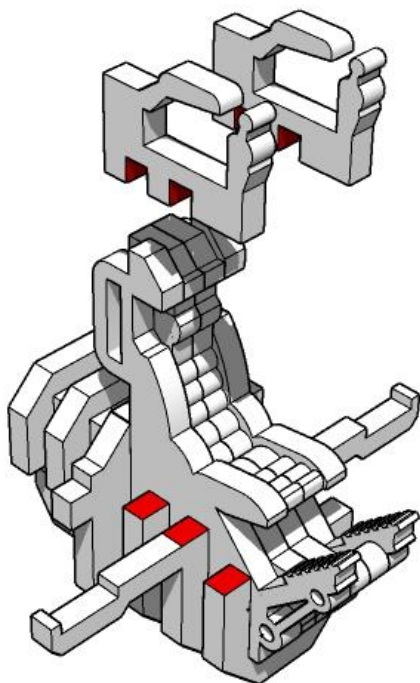
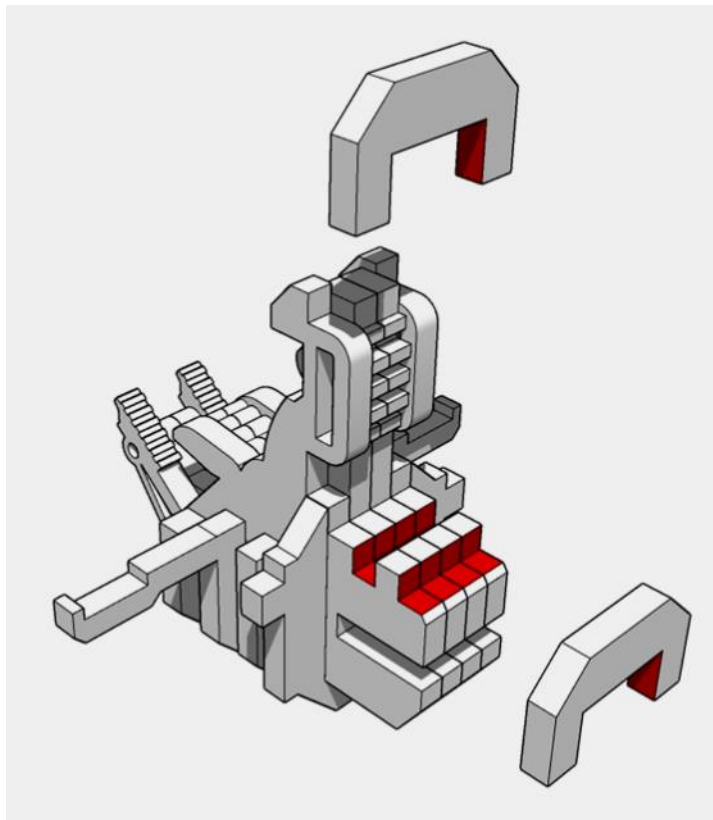
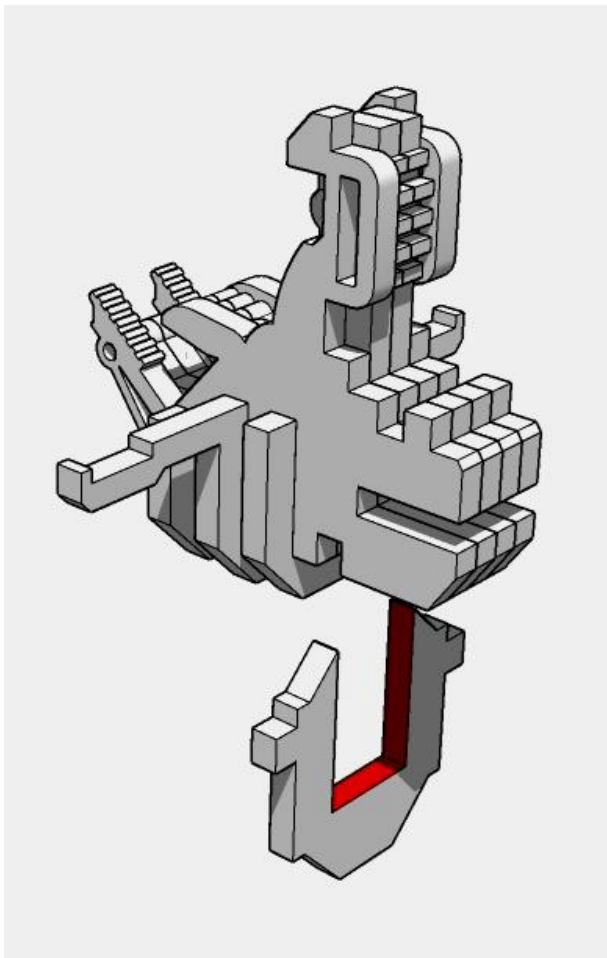




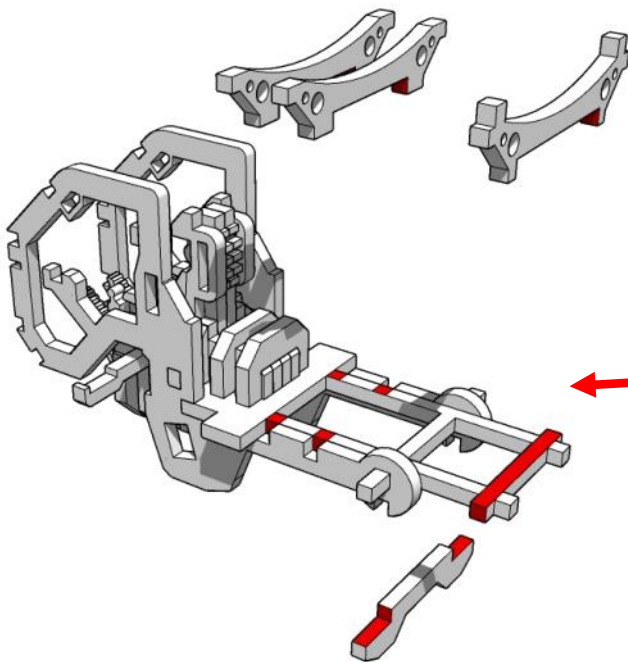
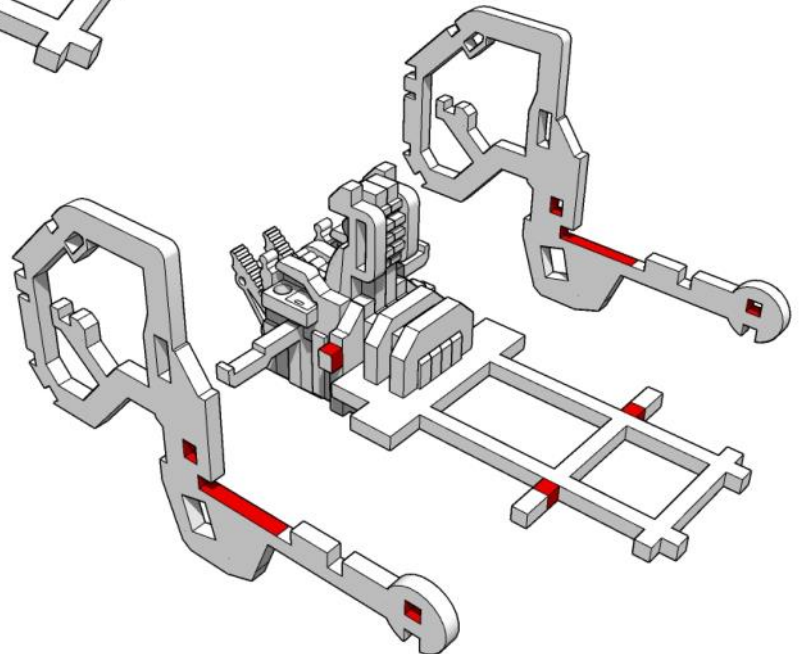
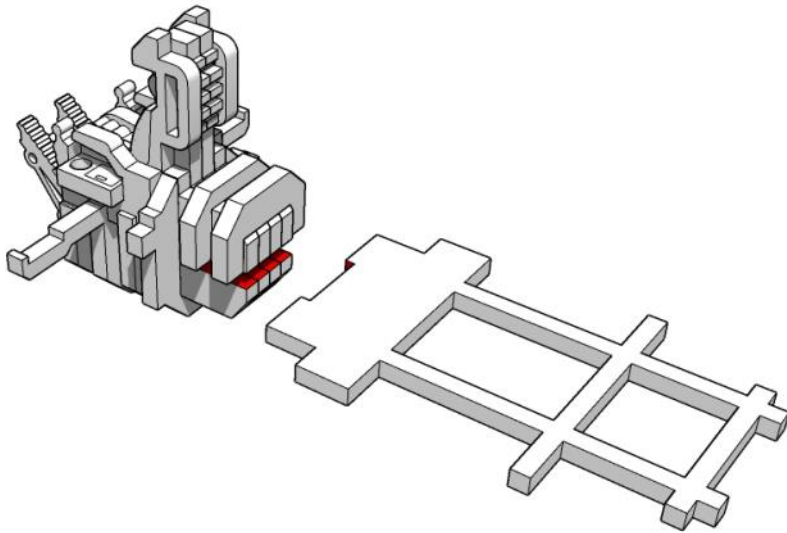
# MINIATURE SCENERY





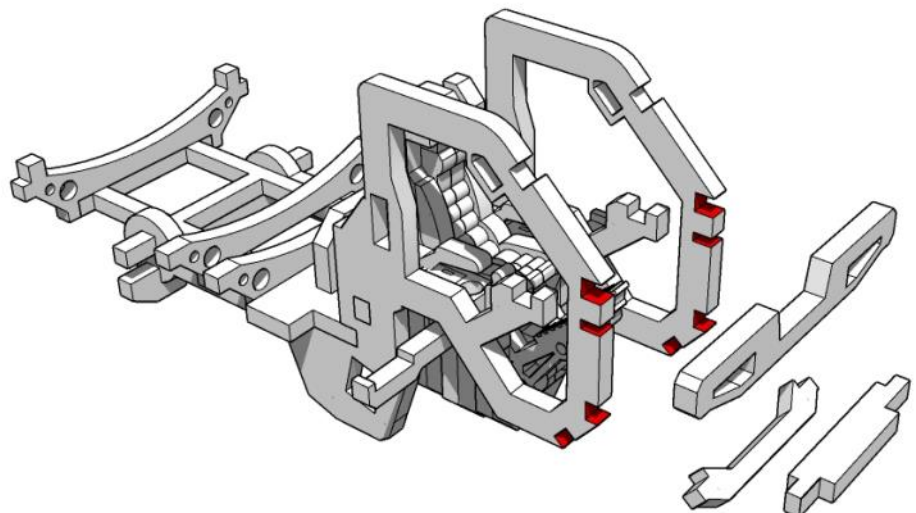


# MINIATURE SCENERY



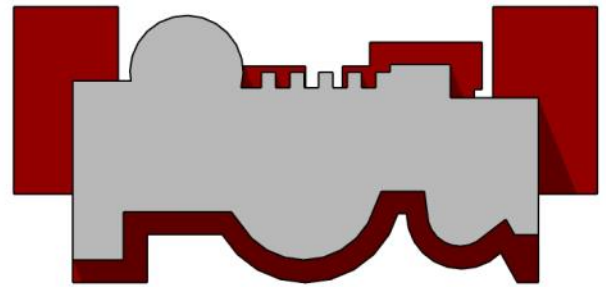
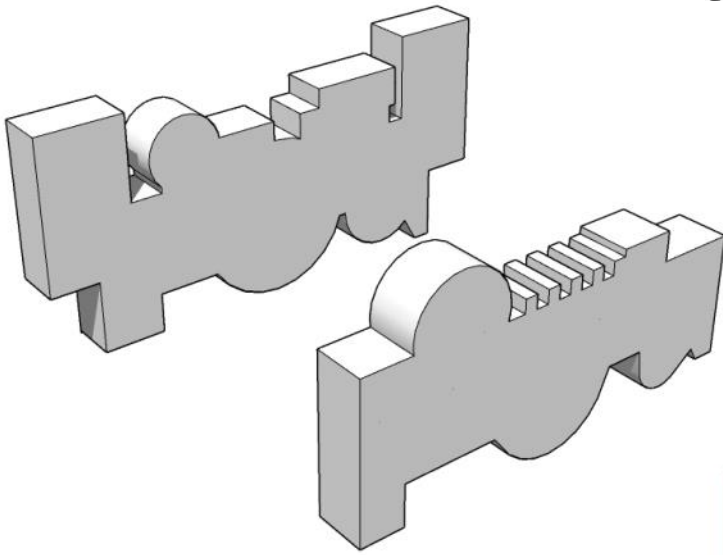
NOTE THAT IF YOU HAVE A DIFFERENT  
VERSION OF THE HUMPTI (SUCH AS THE  
DUMPTRUCK, OR TRANSPORTER), THEY  
MAY CALL FOR DIFFERENT PARTS HERE.

THIS WILL BE MADE OBVIOUS IN THEIR  
OWN RESPECTIVE INSTRUCTIONS.



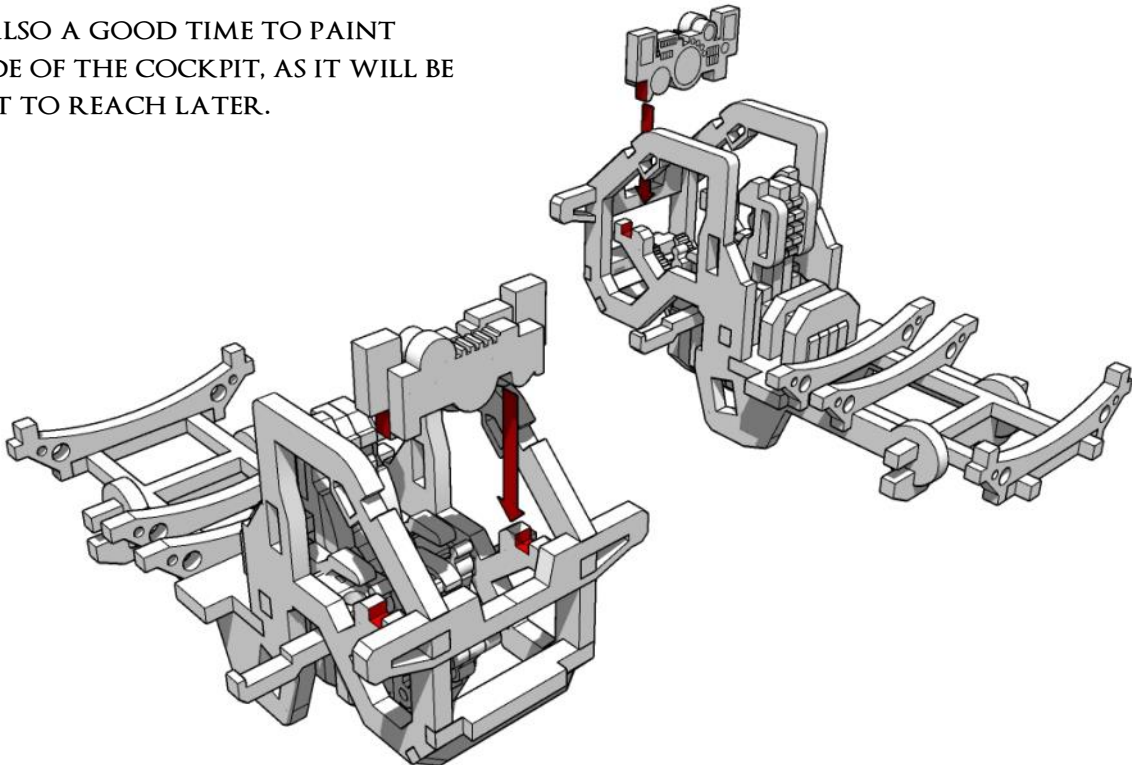


# MINIATURE SCENERY

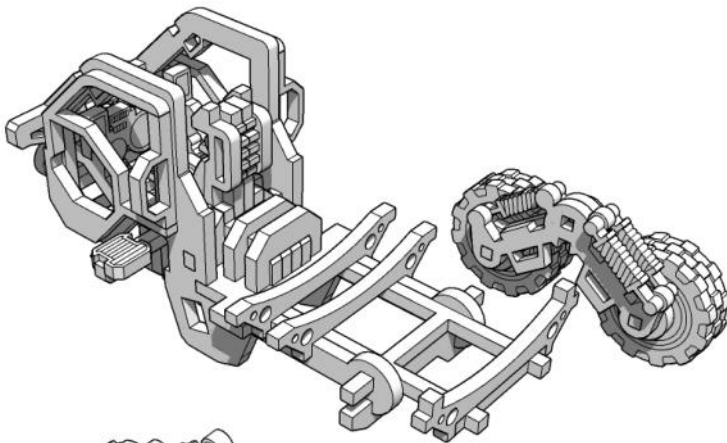
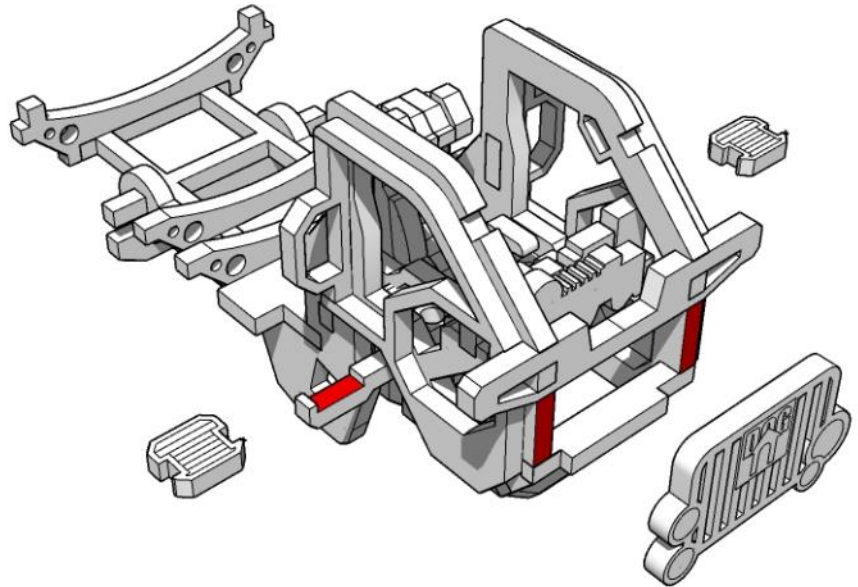
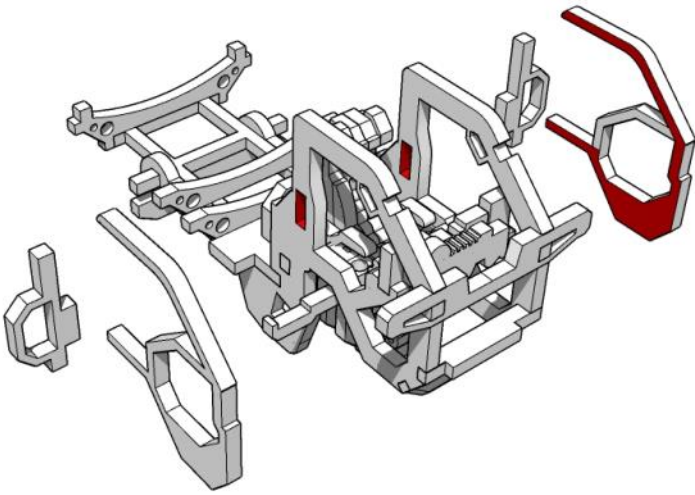


THE INSTRUMENT PANEL IS A BIT FIDDLY TO FIT, BUT IT DOES GO IN, I ASSURE YOU.

THIS IS ALSO A GOOD TIME TO PAINT THE INSIDE OF THE COCKPIT, AS IT WILL BE DIFFICULT TO REACH LATER.



# MINIATURE SCENERY



I SUGGEST LEAVING THE MODEL ON A  
FLAT SURFACE TO DRY AT THIS POINT,  
ENSURING THAT ALL OF THE WHEELS  
TOUCH THE GROUND.

