

MINIATURE SCENERY

INSTRUCTIONS HUMPT1 HAULER

PREPARATION

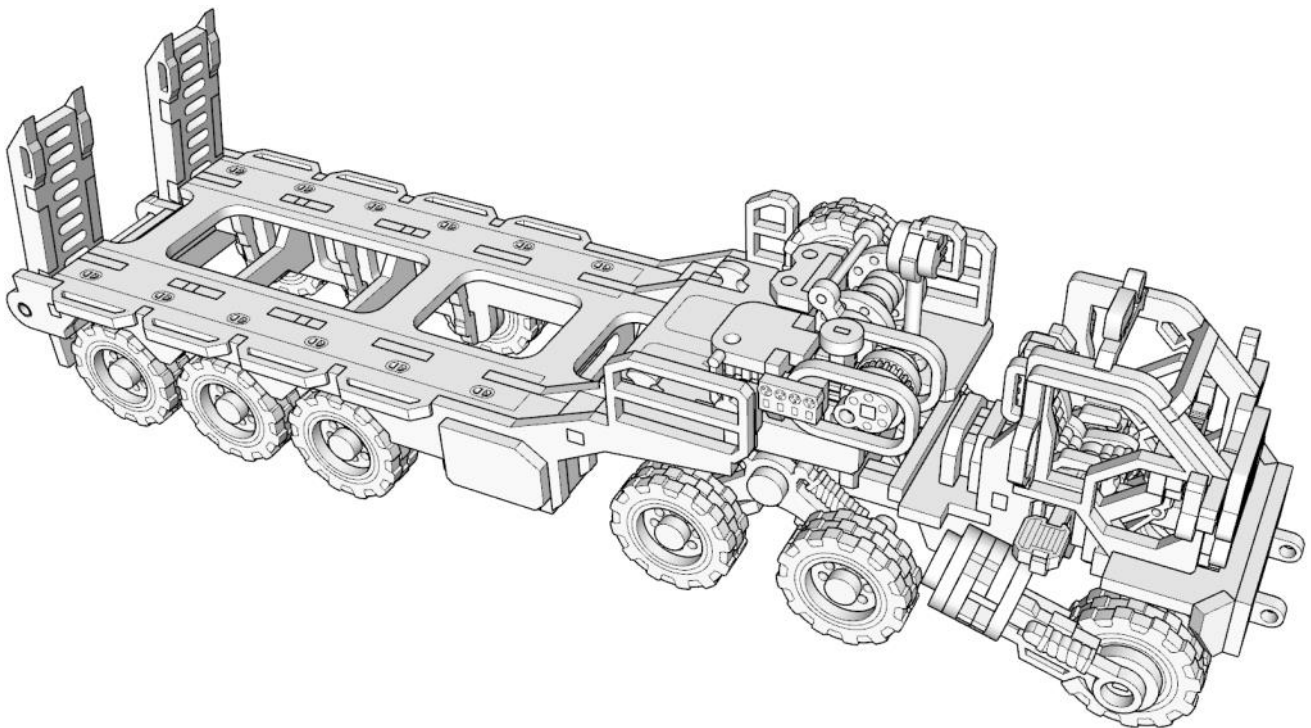
You will need:

- Cutting mat or something to protect your table.
- PVA/Wood glue or superglue if you prefer.
- Small file or sand paper.
- Small blade / hobby knife



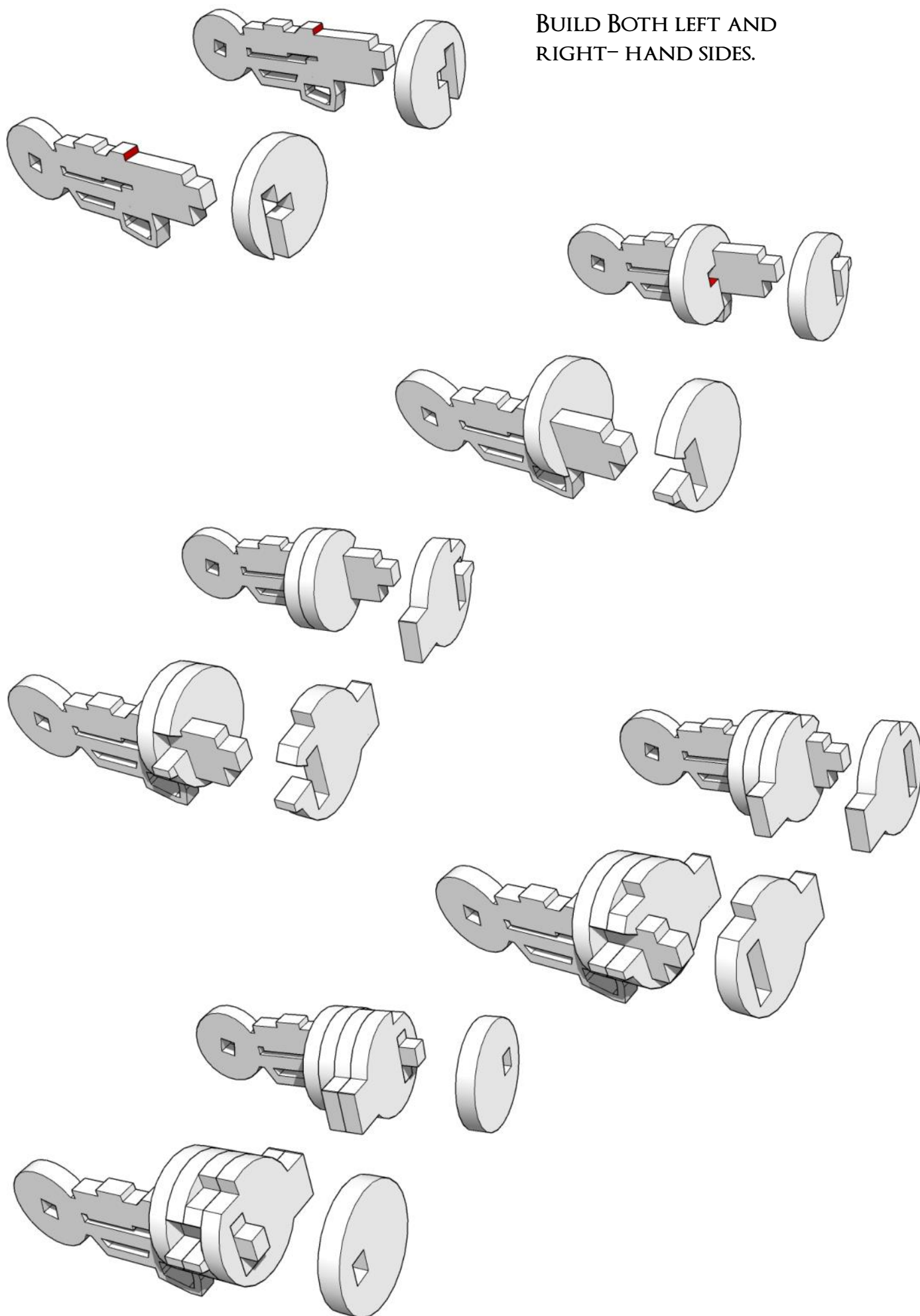
GENERAL PROCESS

- Clear plenty of table space, you will need it.
- Parts should remove easily from the board by pressing through and popping them out. It's a good idea to cut through the tiny joins first though, and some parts (particularly smaller, more detailed parts) may need more careful persuasion.
- Use file or sand paper to remove the small bur caused by the connection to the frame.
- It's a good idea to familiarise yourself with how the pieces fit together before gluing.
- Slot the parts together as shown by the pictures below, applying glue wherever there is a connection. (unless shown otherwise)
- Parts may be a very tight fit, slight trimming or sanding of parts may be needed for ease of assembly.

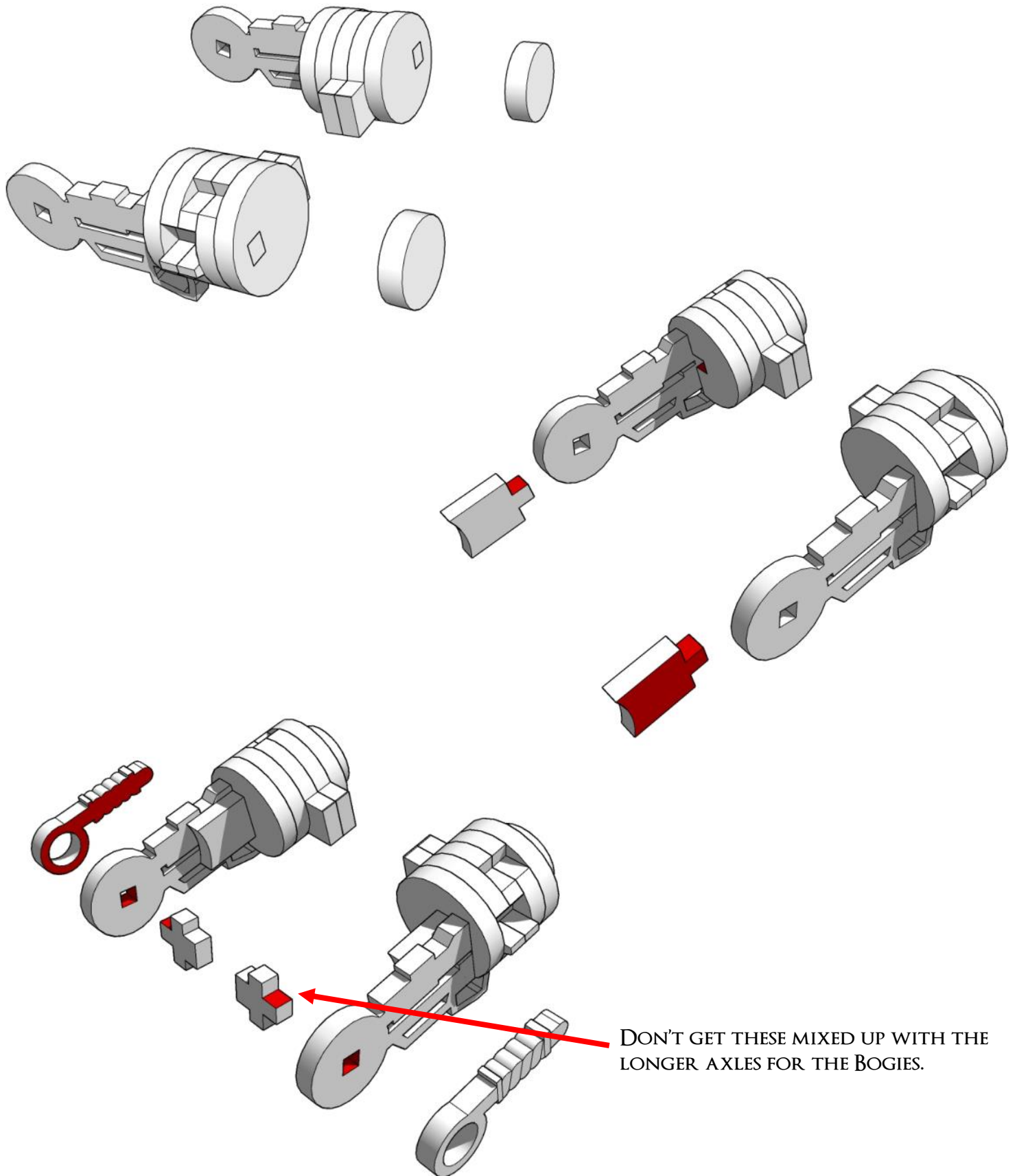


FRONTS FORKS.

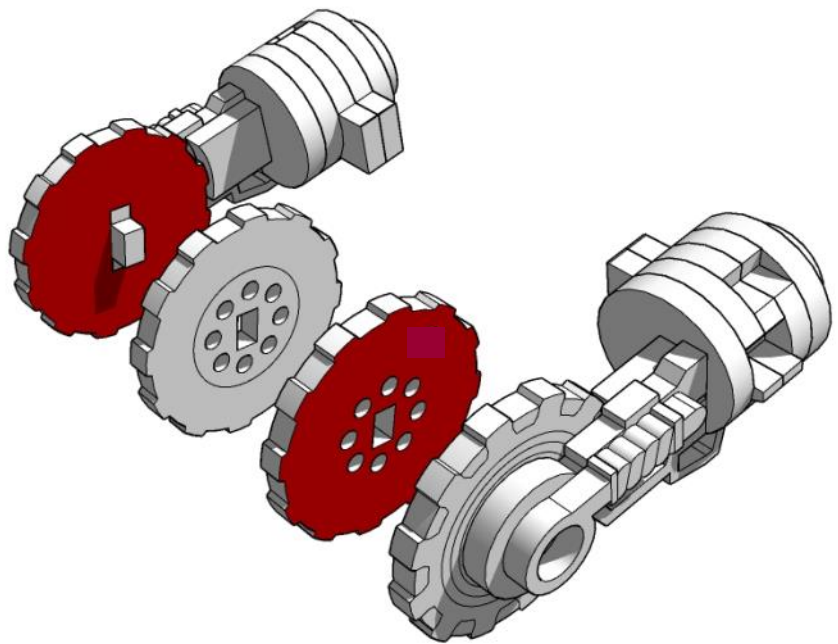
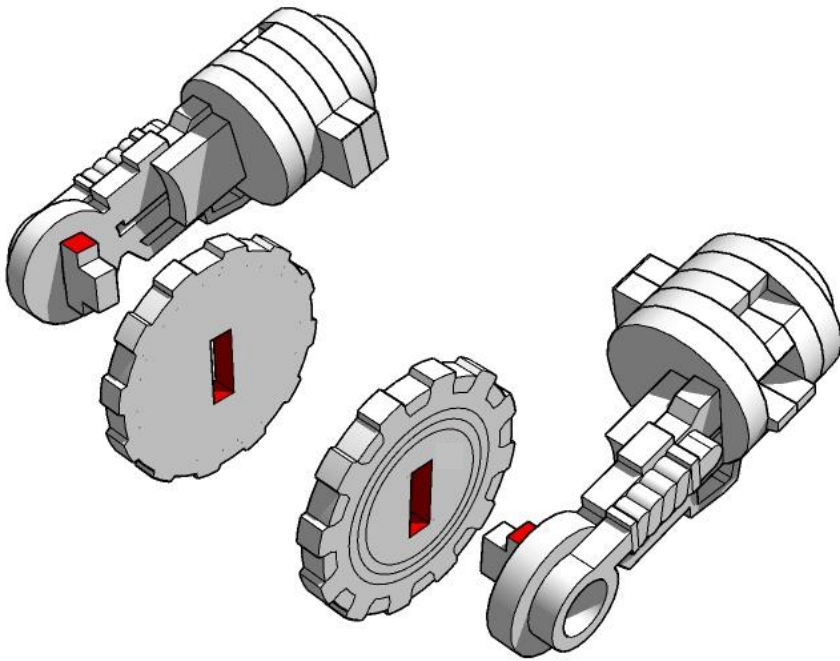
BUILD BOTH LEFT AND
RIGHT- HAND SIDES.



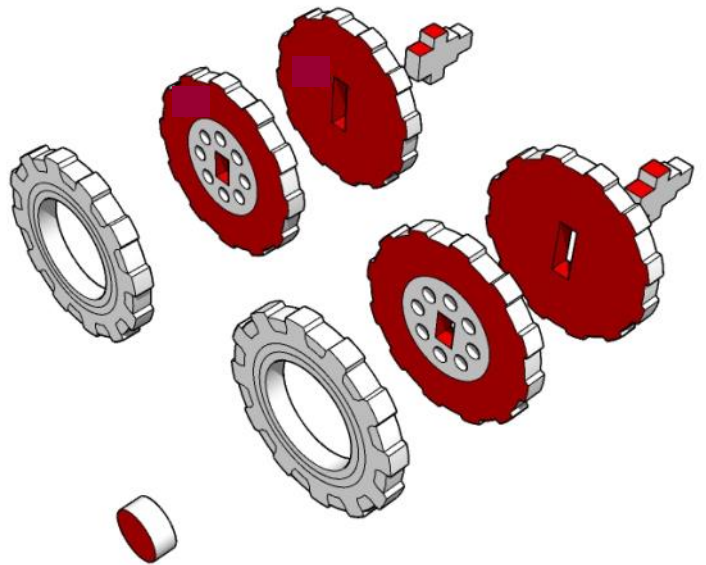
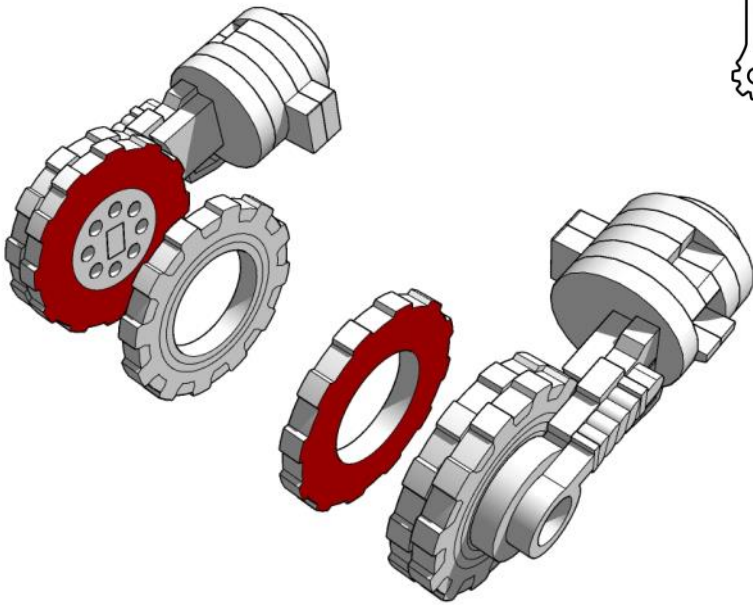
MINIATURE SCENERY



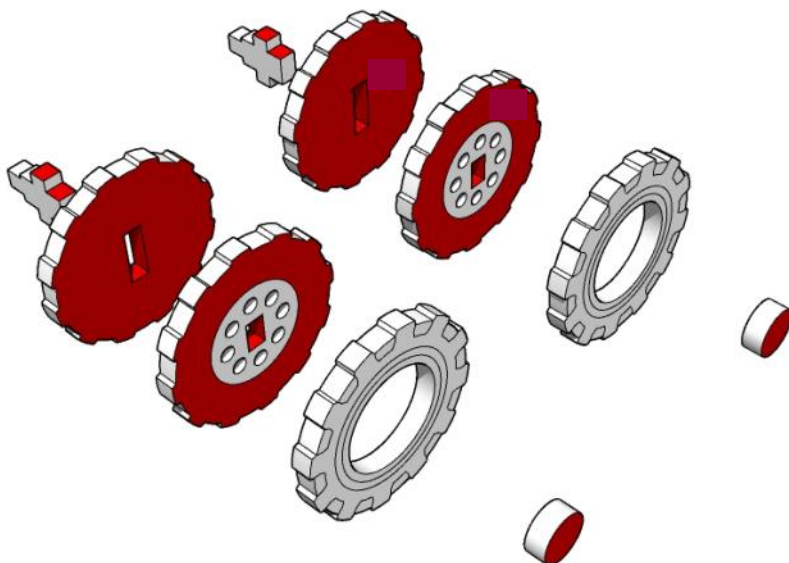
MINIATURE SCENERY



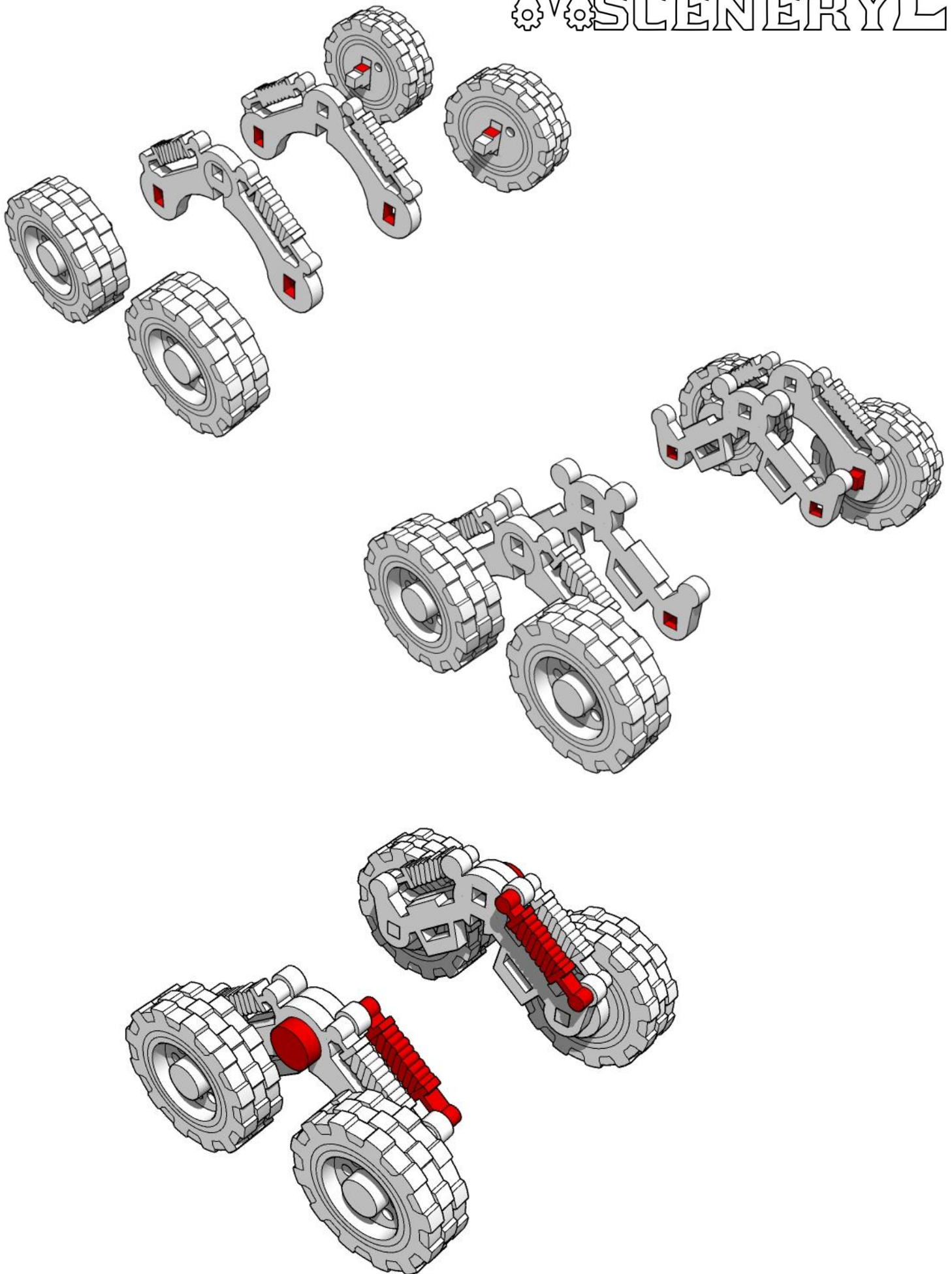
MINIATURE SCENERY



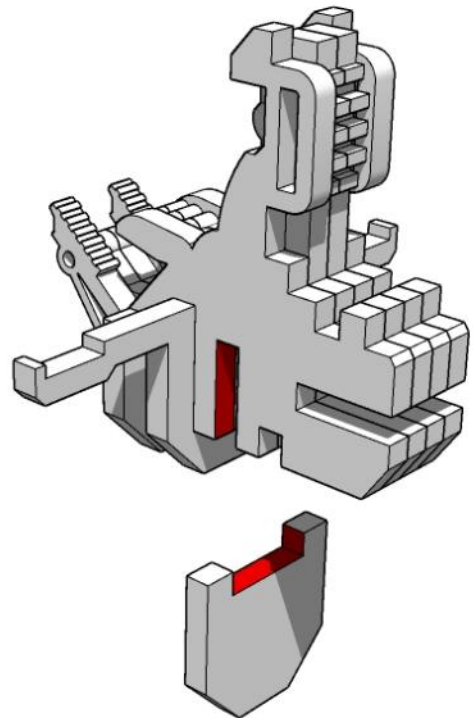
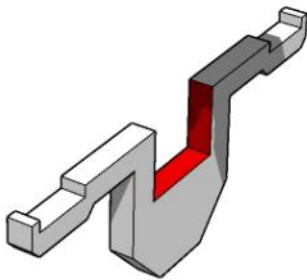
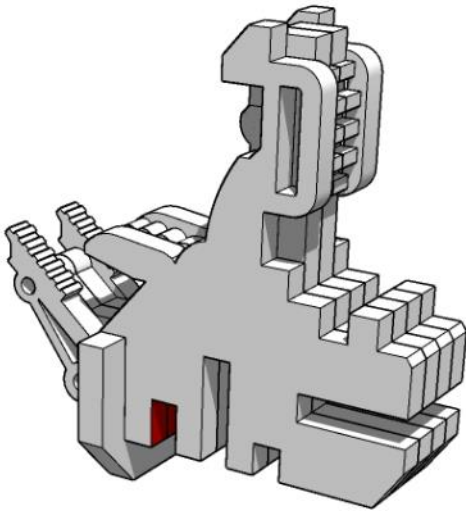
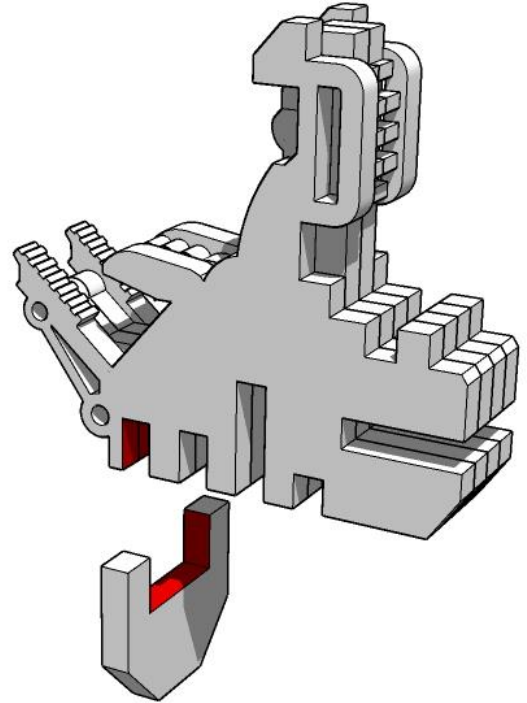
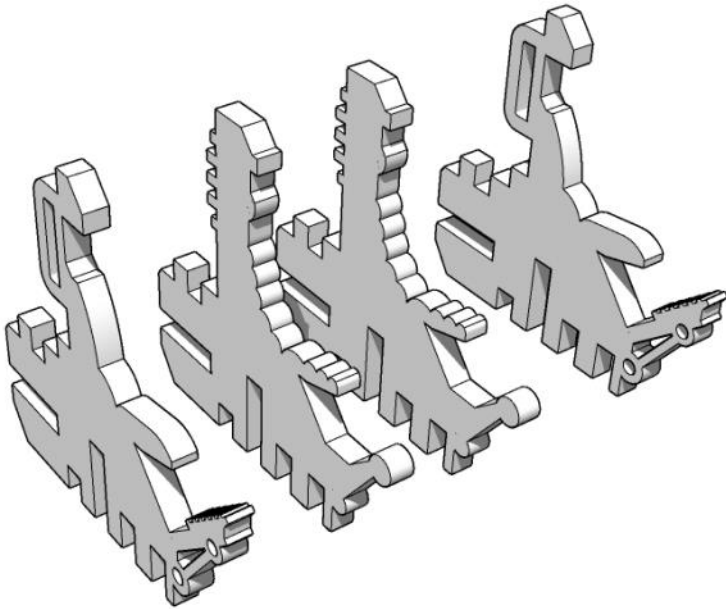
MAKE TWO SETS
OF REAR WHEELS

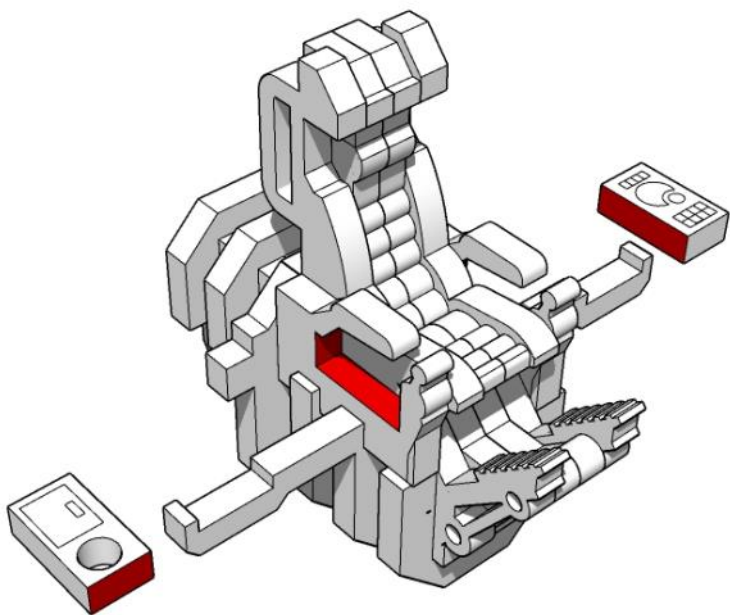
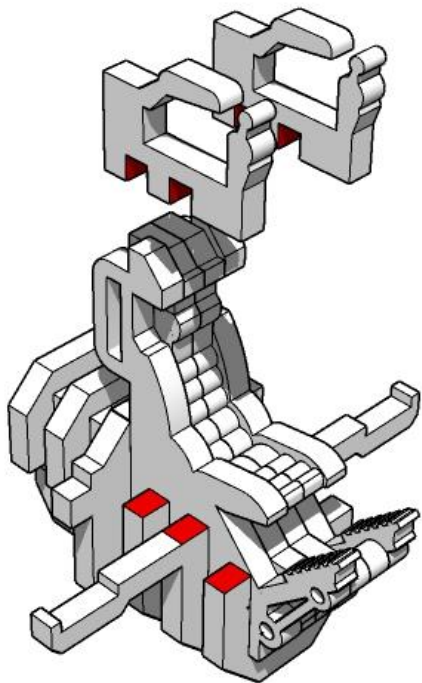
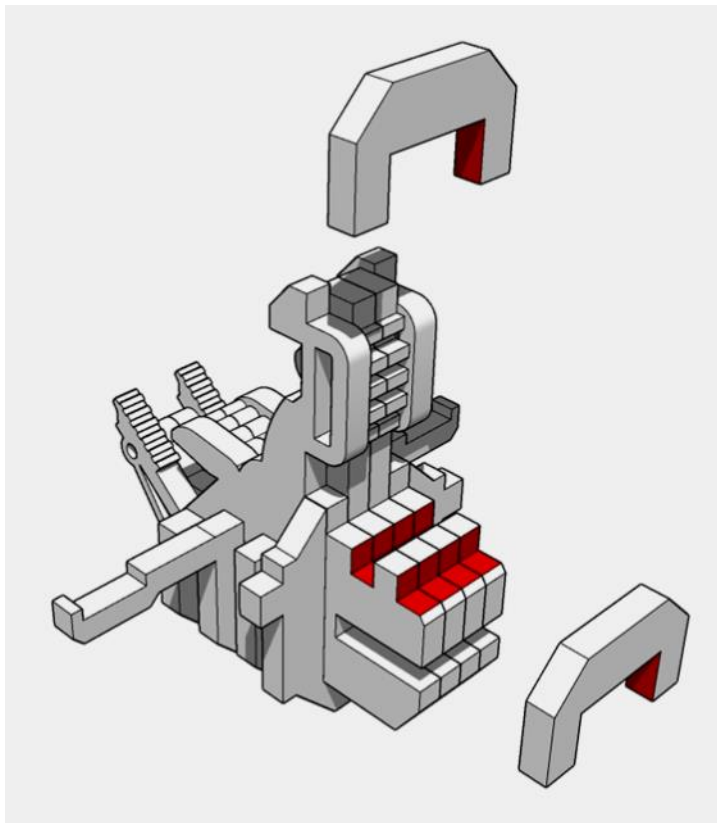
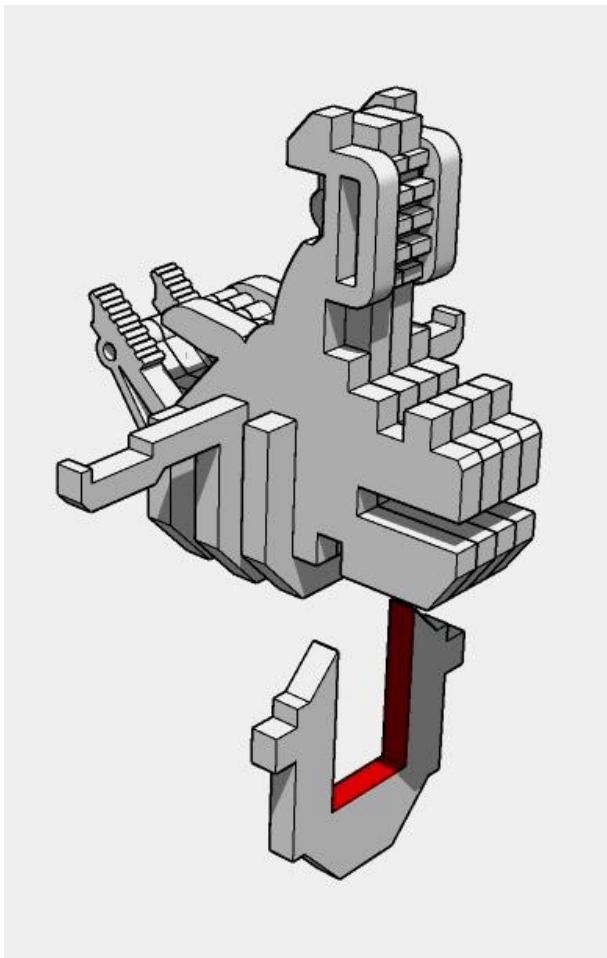


MINIATURE SCENERY

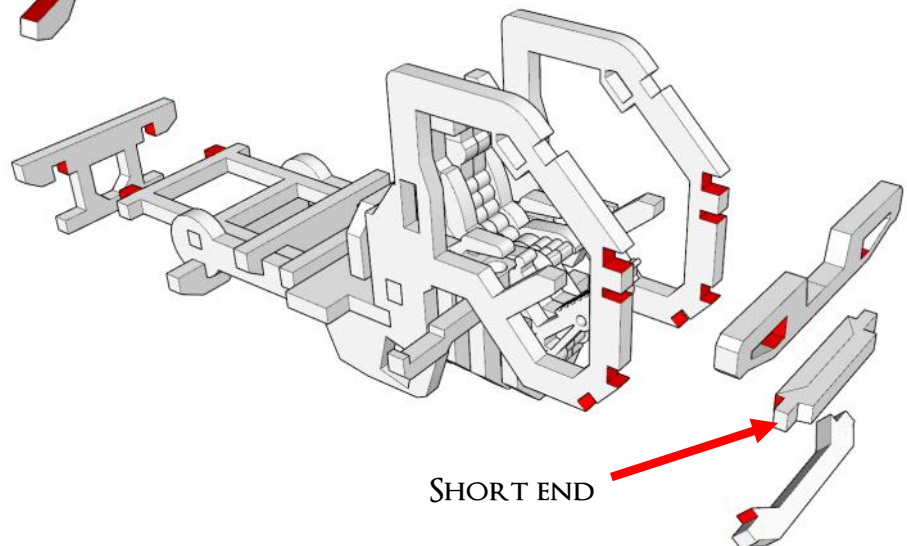
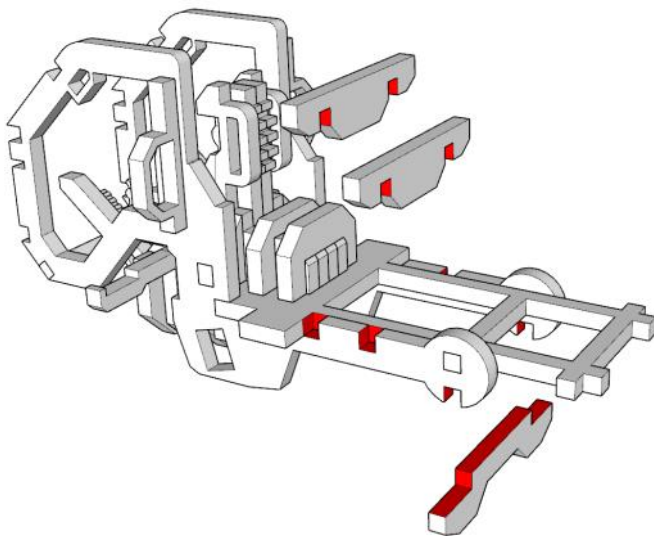
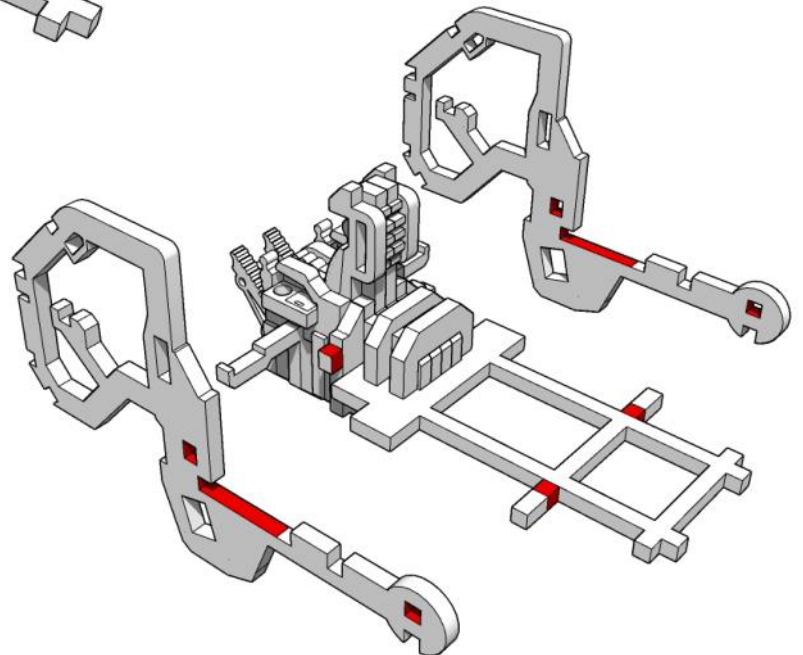
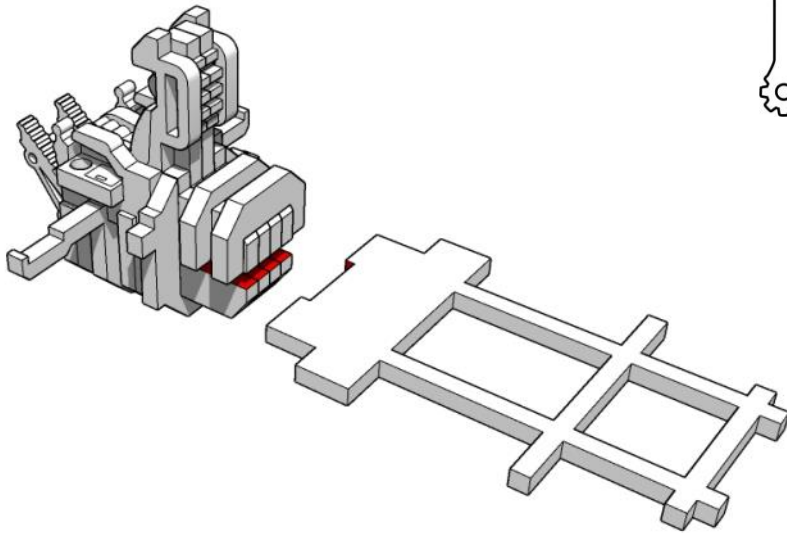


MINIATURE SCENERY

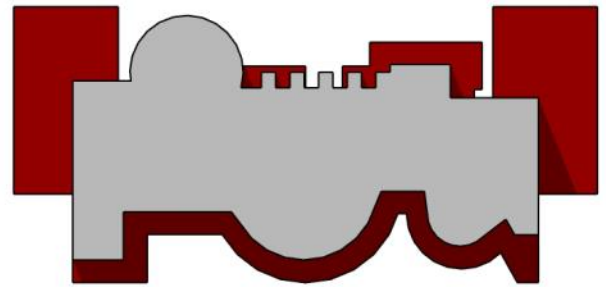
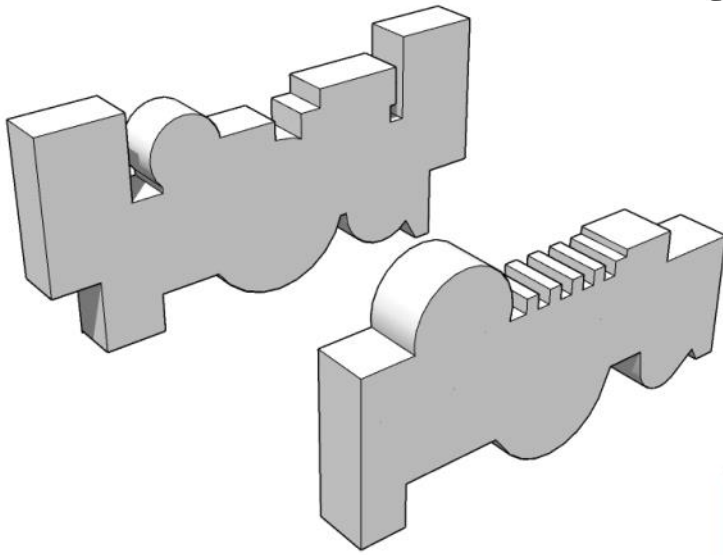




MINIATURE SCENERY

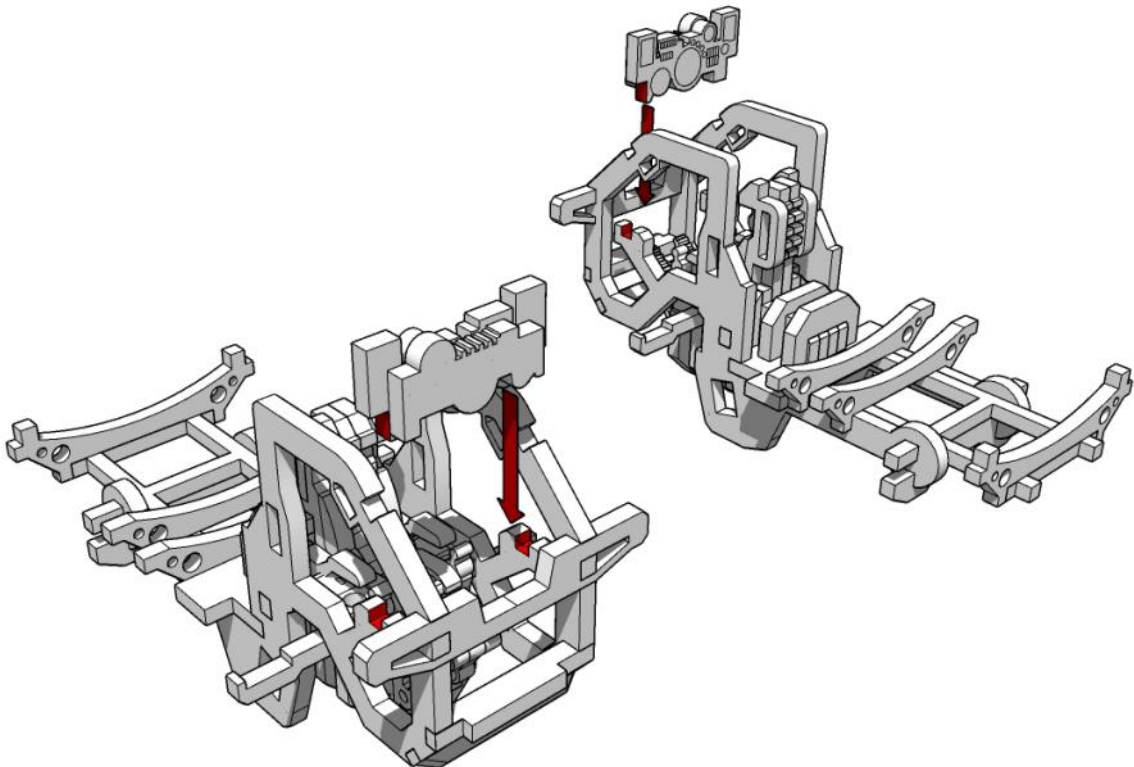


MINIATURE SCENERY

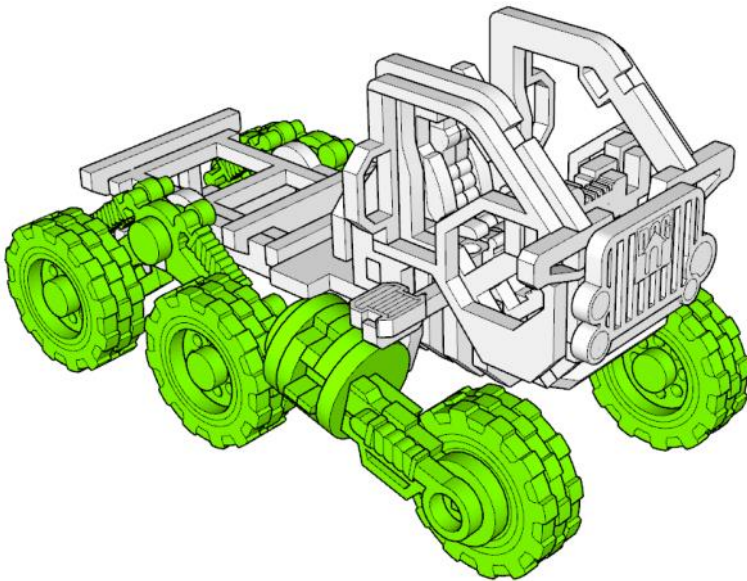
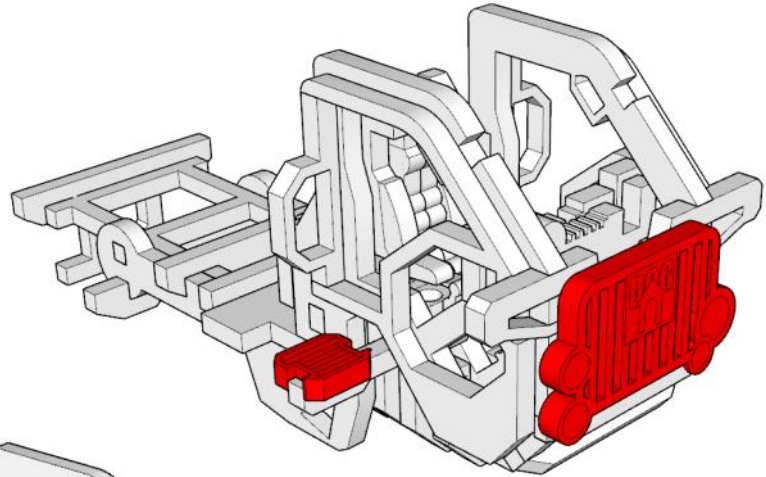
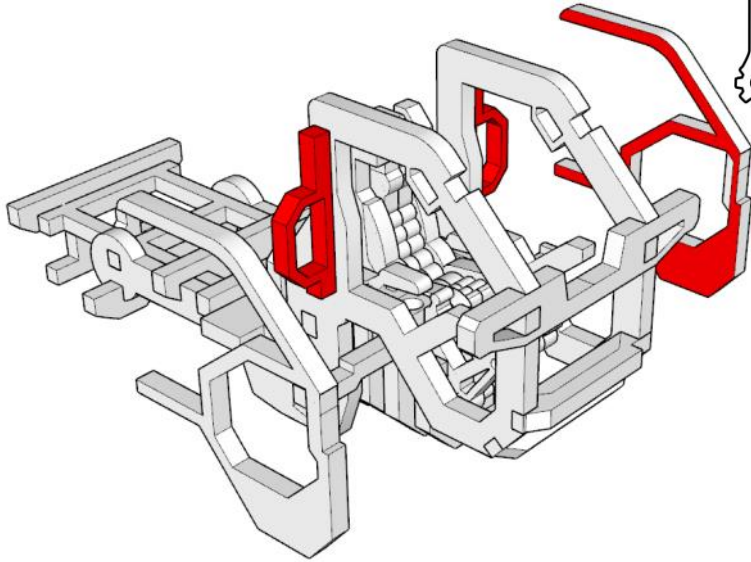


THE INSTRUMENT PANEL IS A BIT FIDDLY TO FIT, BUT IT DOES GO IN, I ASSURE YOU.

THIS IS ALSO A GOOD TIME TO PAINT THE INSIDE OF THE COCKPIT, AS IT WILL BE DIFFICULT TO REACH LATER.

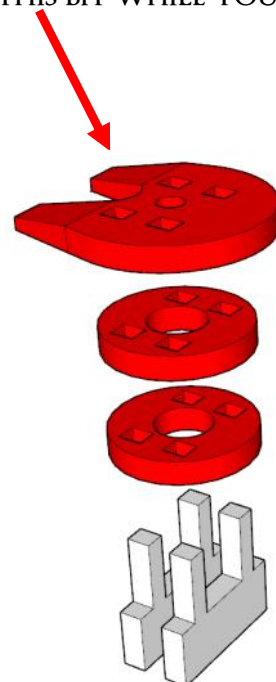


MINIATURE SCENERY

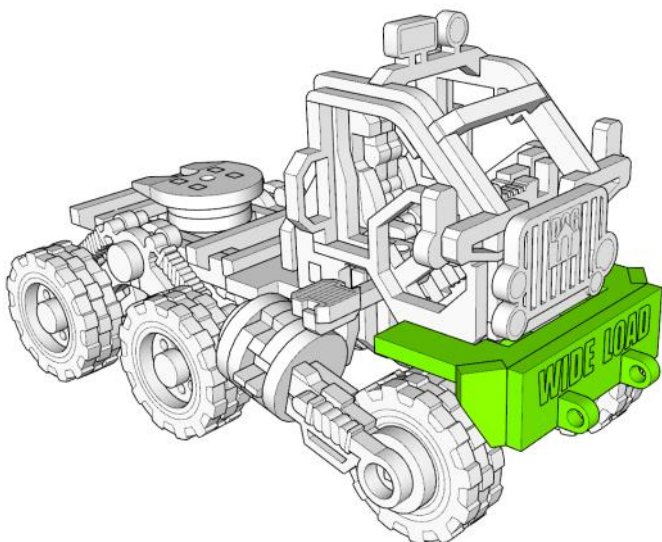
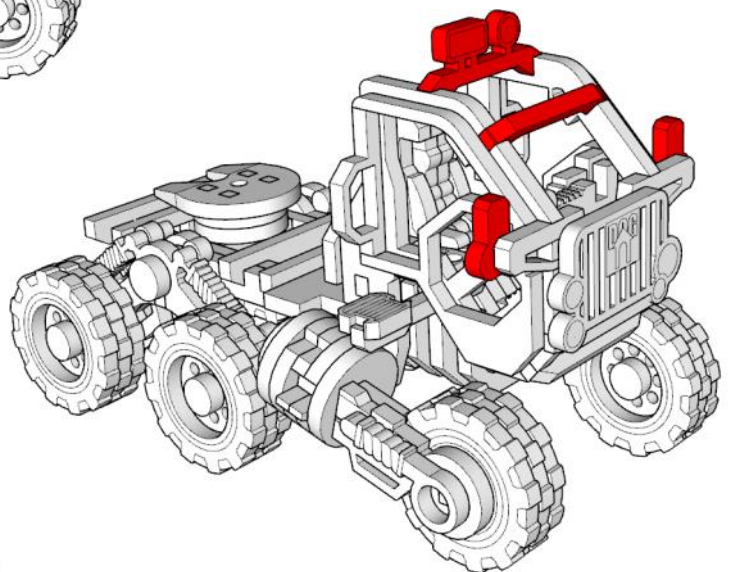
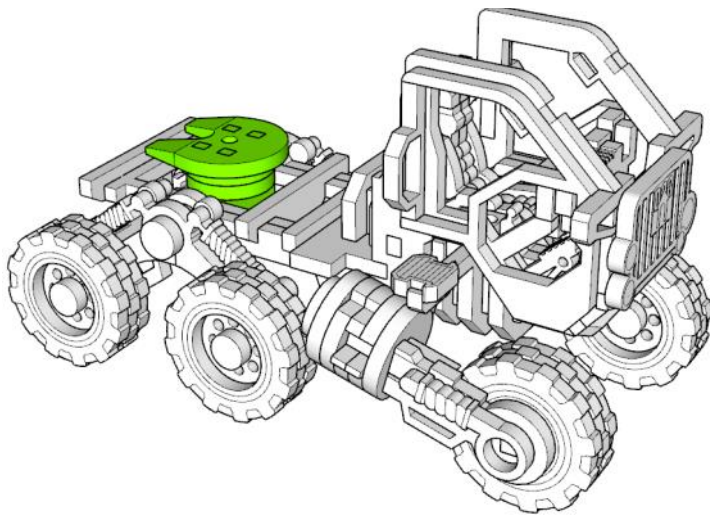
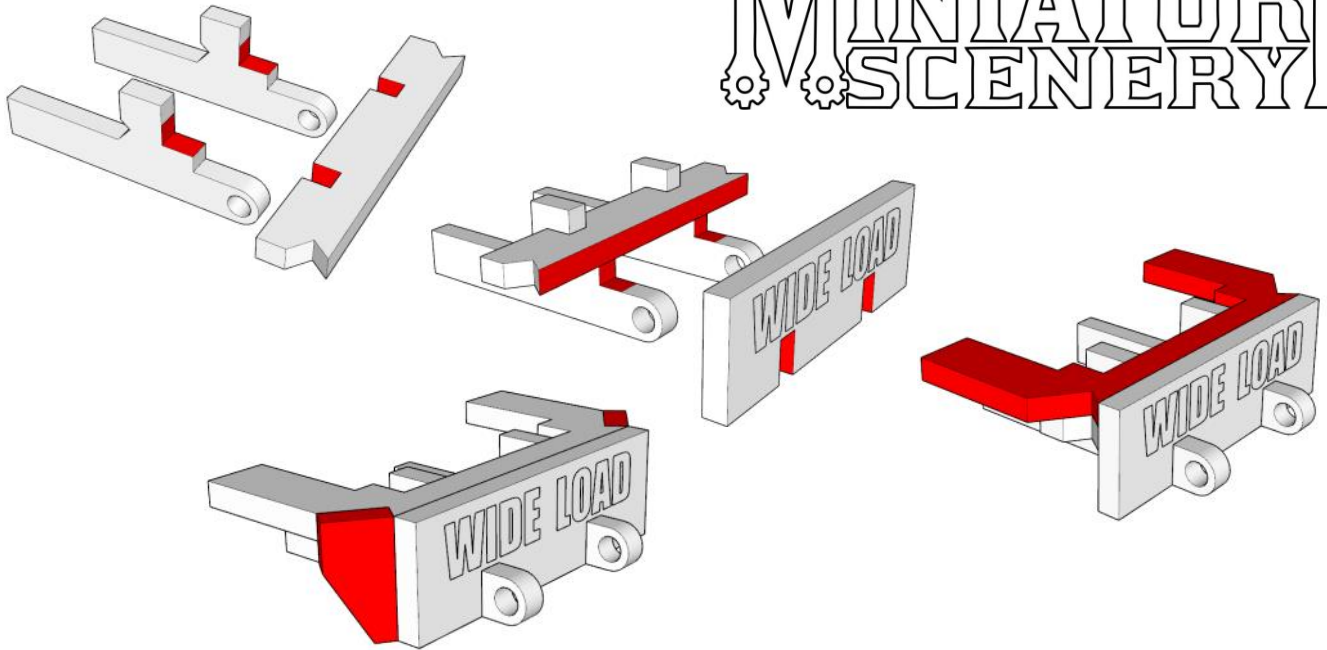


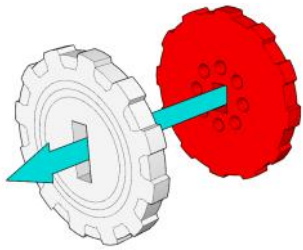
I SUGGEST LEAVING THE MODEL ON A FLAT SURFACE TO DRY AT THIS POINT, ENSURING THAT ALL OF THE WHEELS TOUCH THE GROUND.

MAKE THIS BIT WHILE YOU WAIT

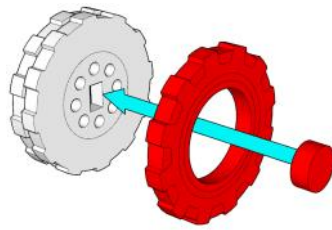


MINIATURE SCENERY

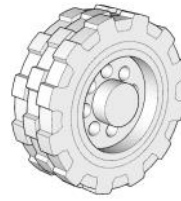




WHEEL INSIDE
ENSURE SLOTS
ARE LINED UP

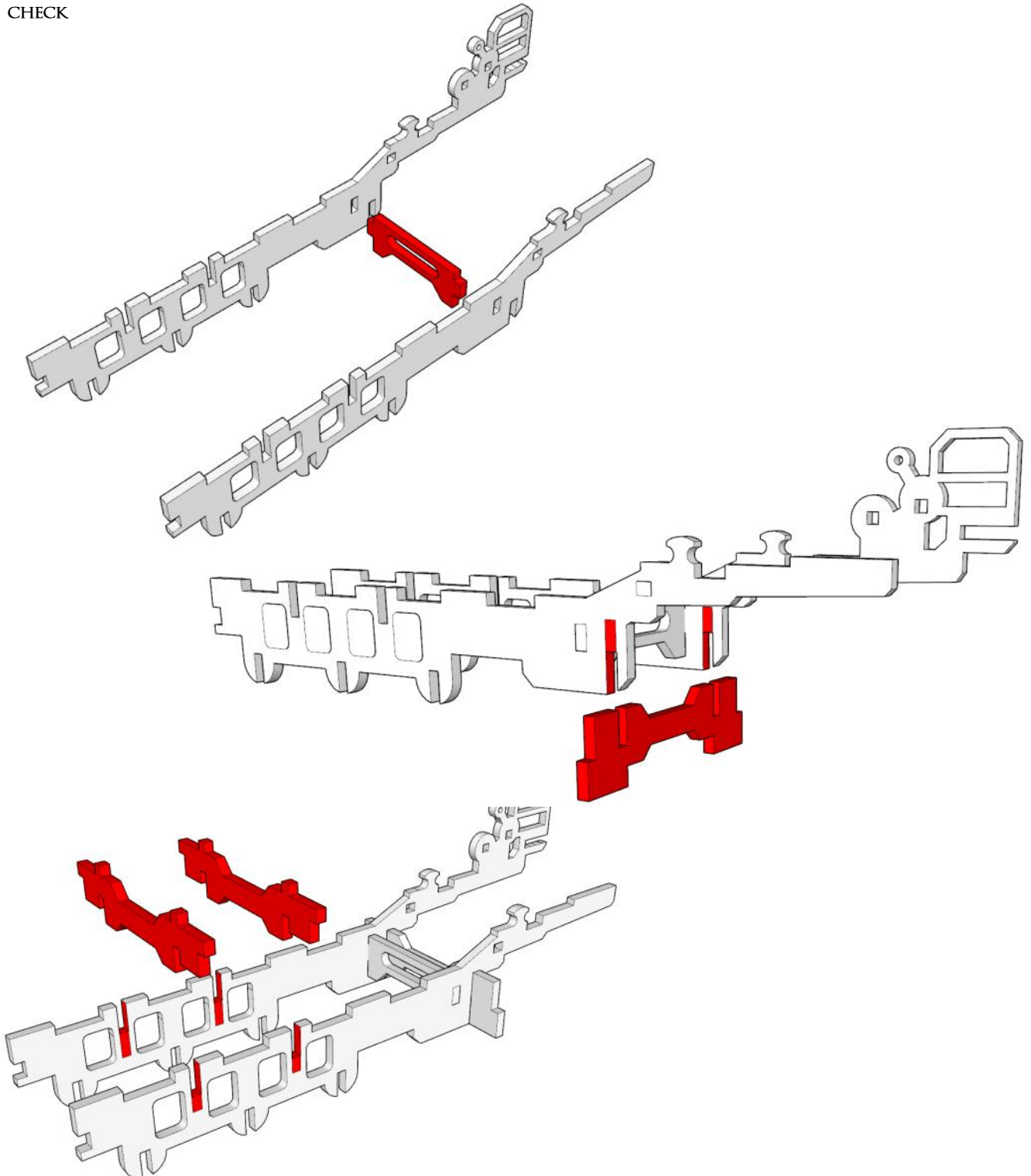


WHEEL OUTSIDE

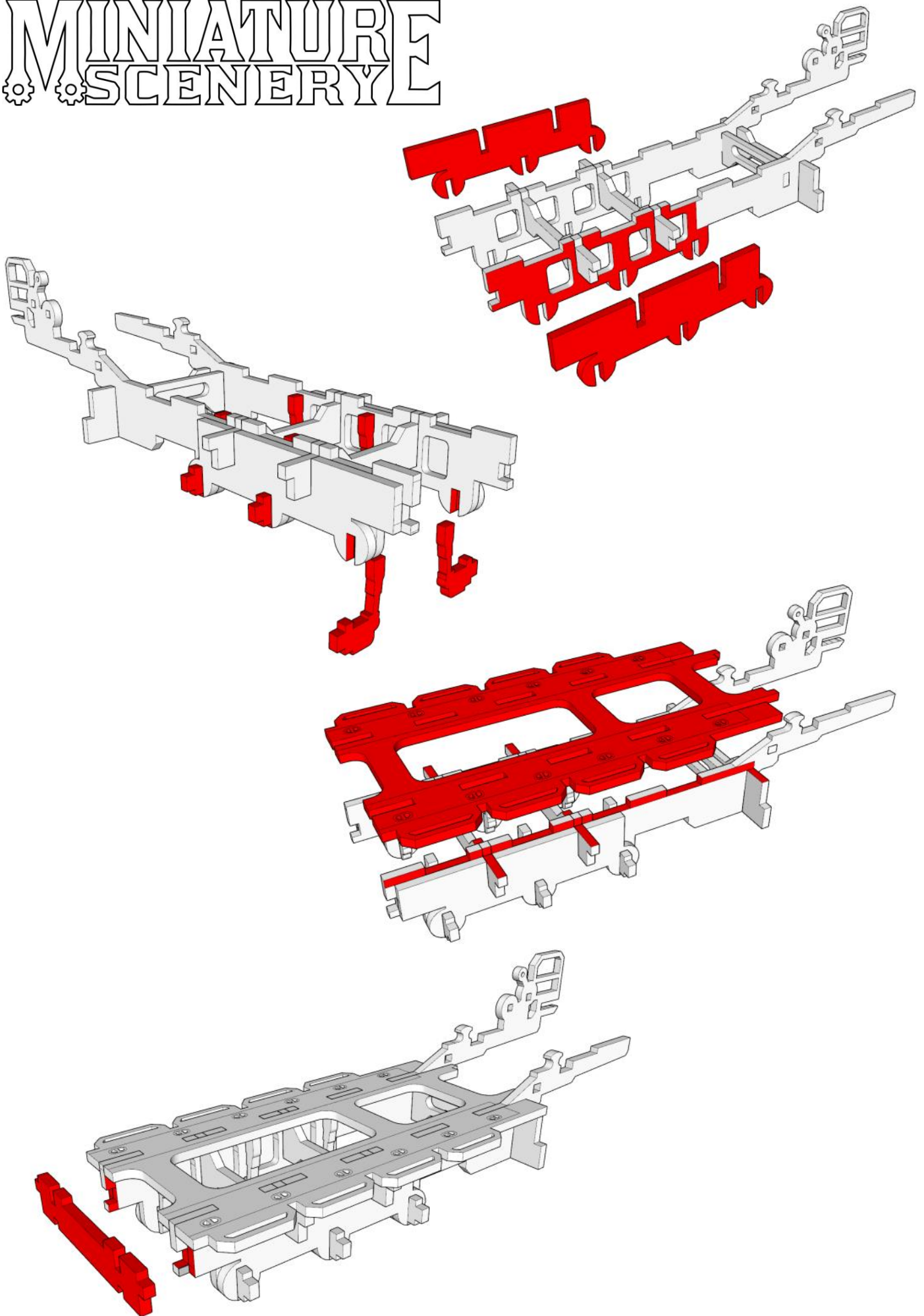


X7
MAKE SEVEN MORE
WHEELS

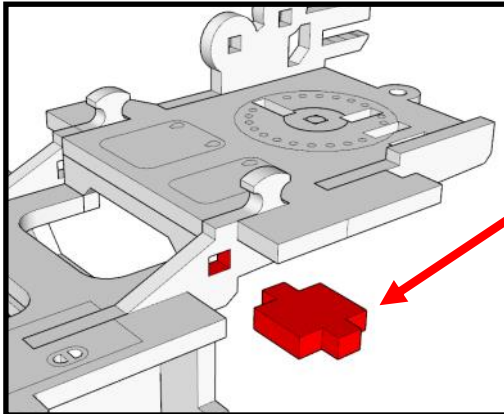
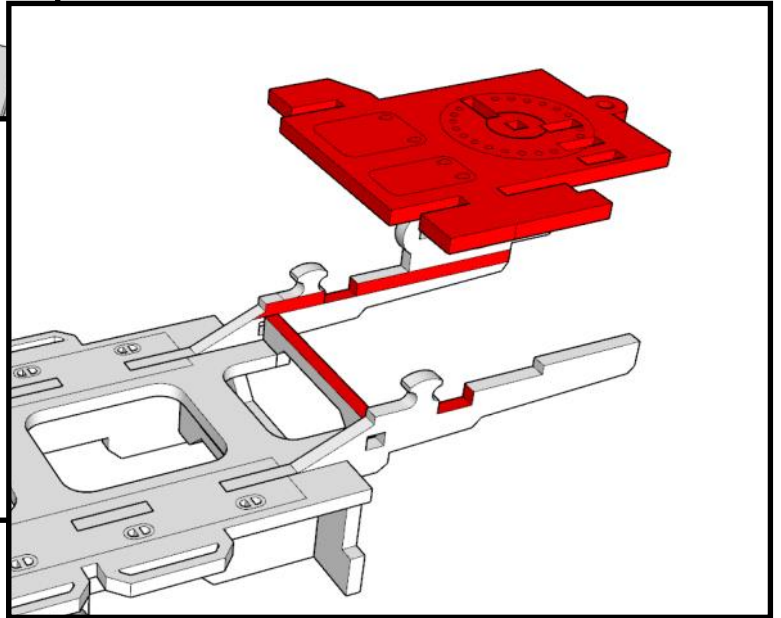
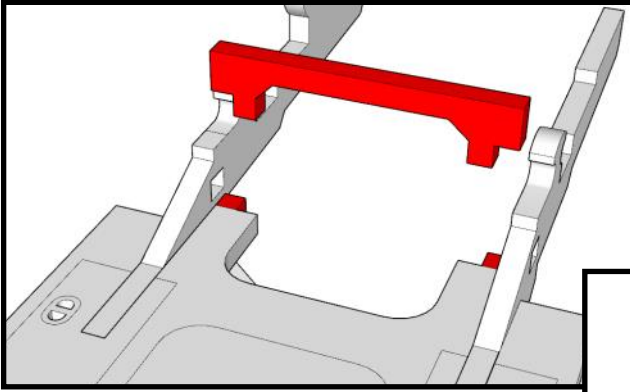
USE A PIECE OF
SCRAP MDF TO
CHECK



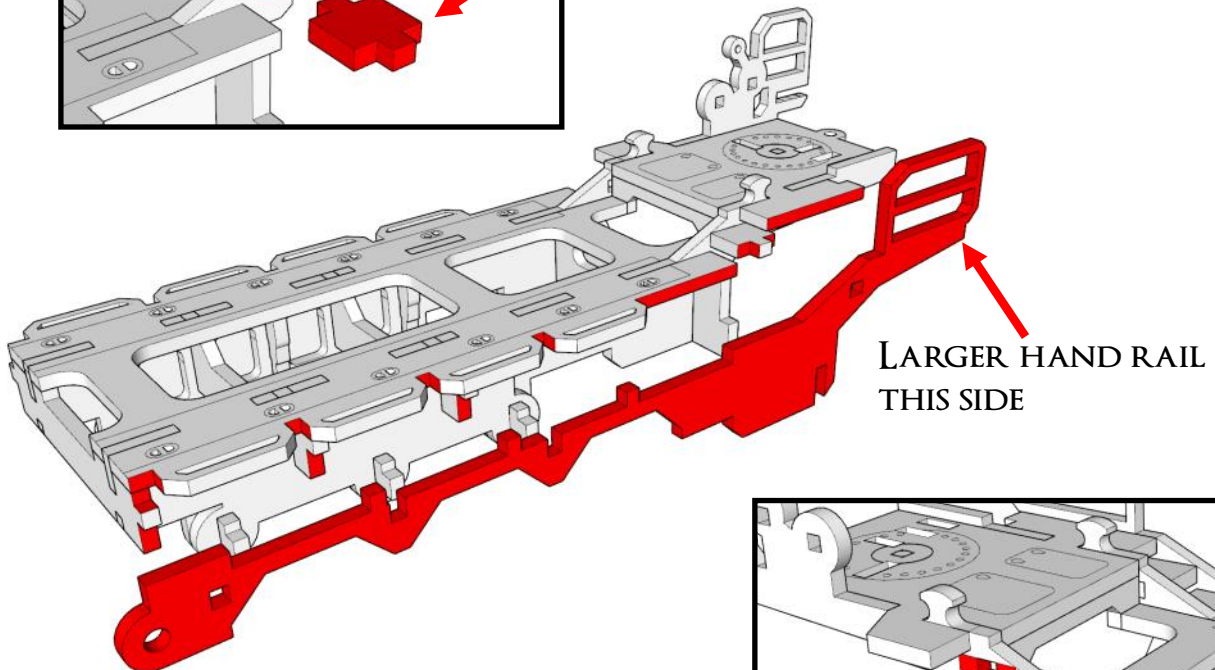
MINIATURE SCENERY



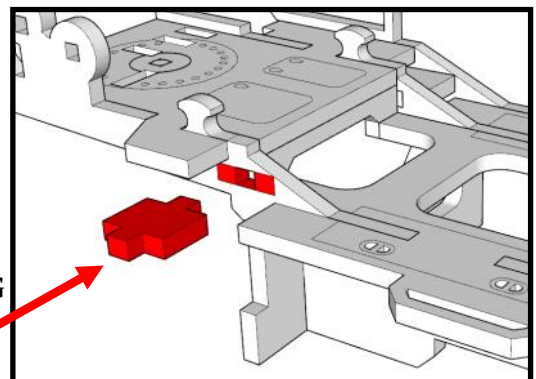
MINIATURE SCENERY



DIAMOND PLATING
ENGRAVE ON TOP

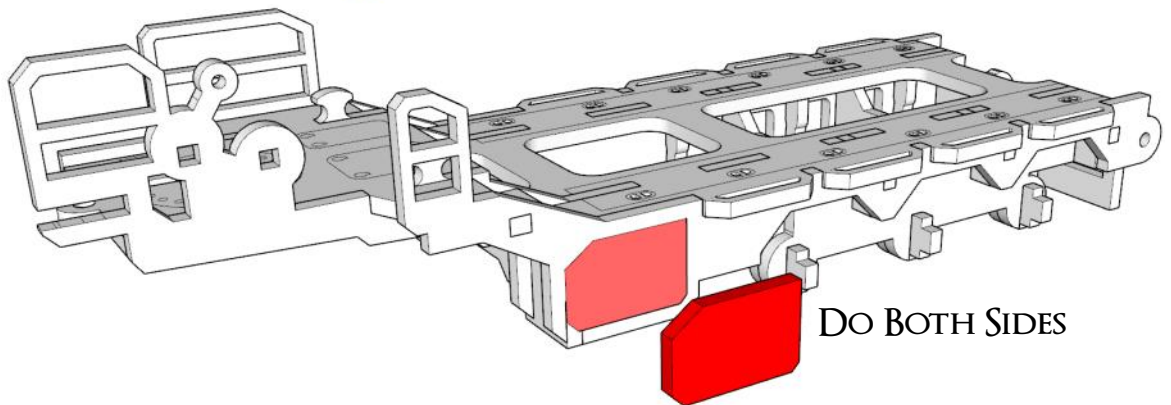
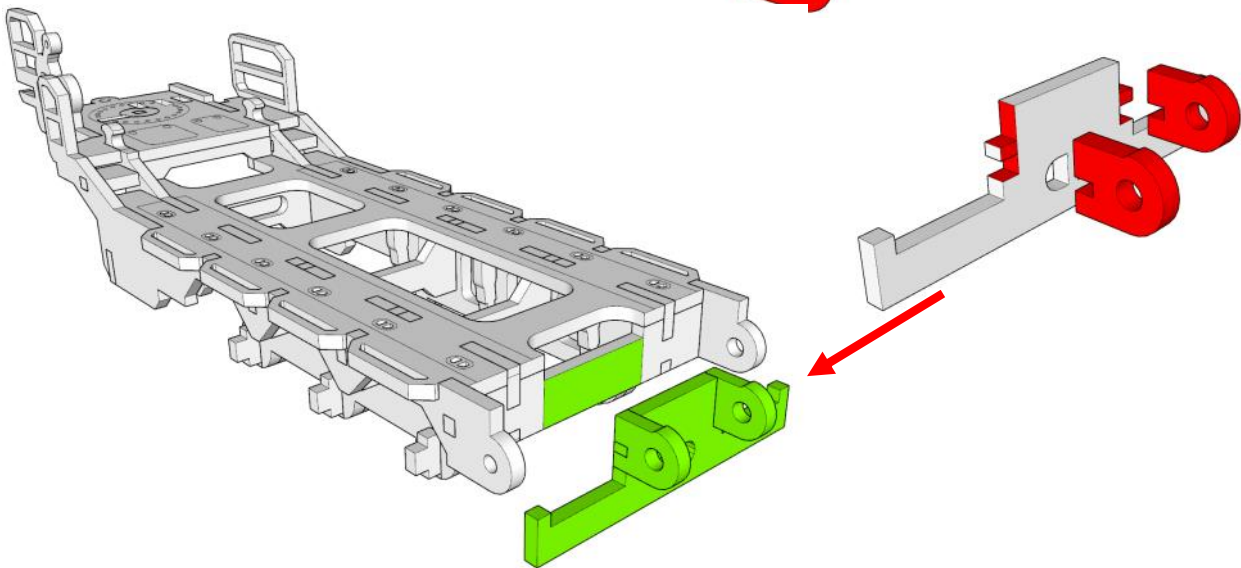
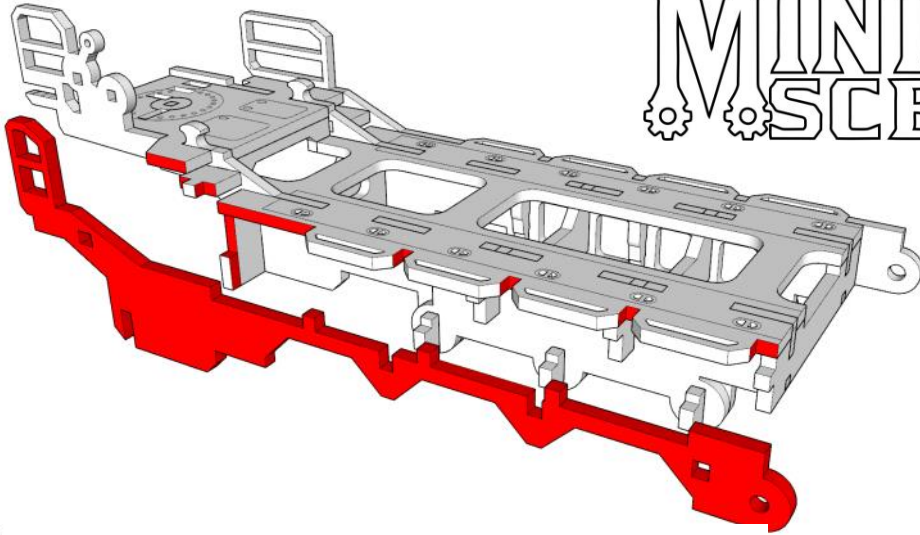


LARGER HAND RAIL
THIS SIDE

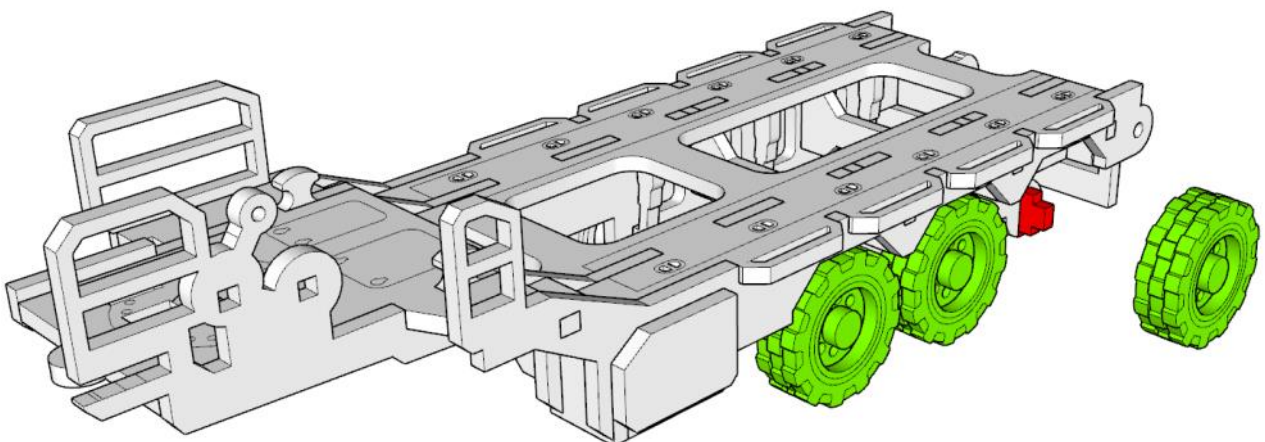


DIAMOND PLATING
ENGRAVE ON TOP

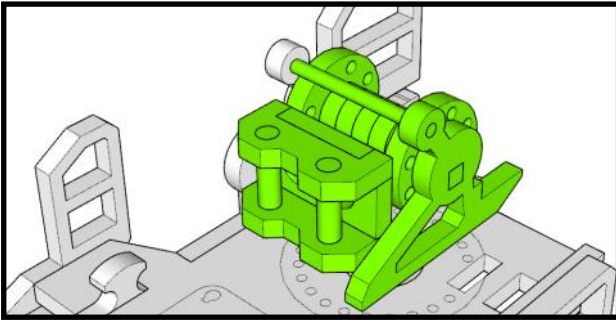
MINIATURE SCENERY



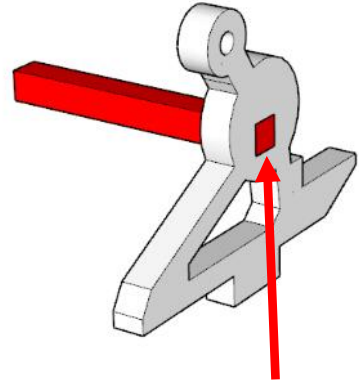
DO BOTH SIDES



MINIATURE SCENERY

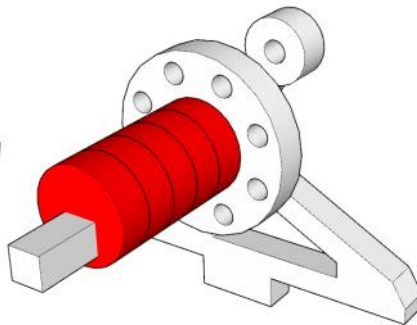
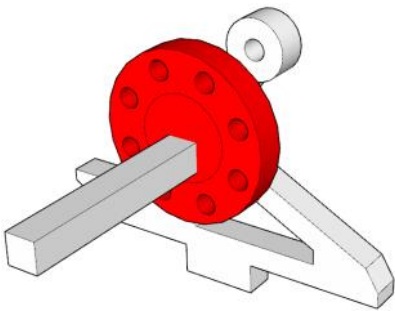


THIS SECTION: ADDING THE WINCH

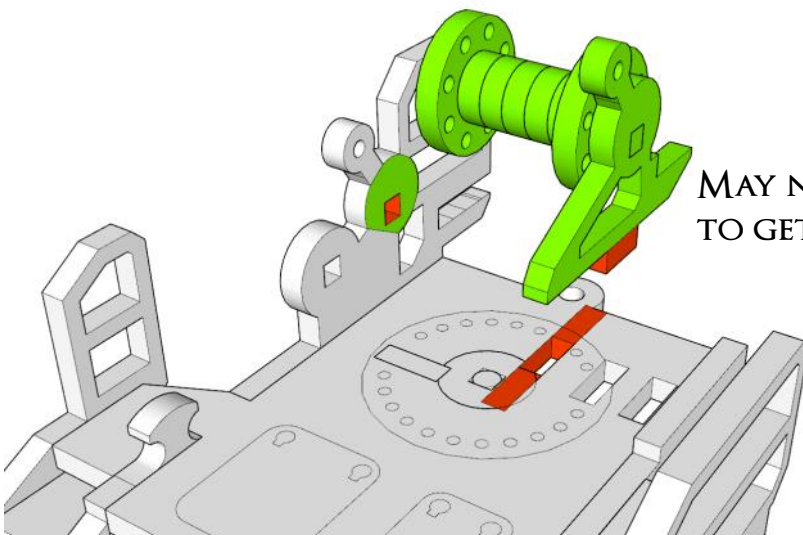
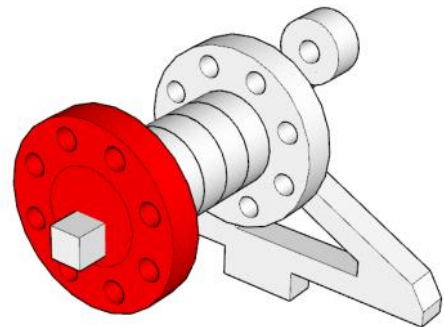


FLAT ON THIS SIDE.

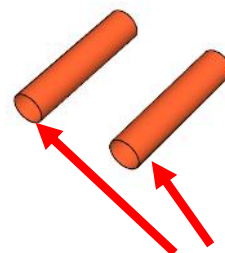
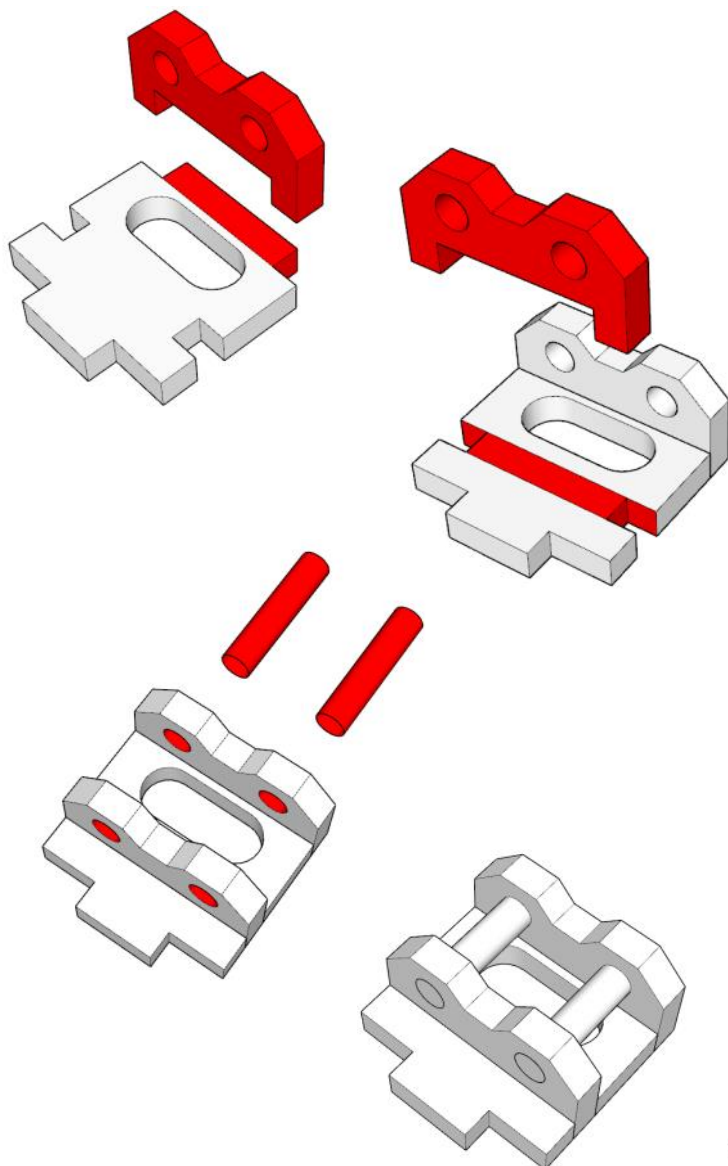
DON'T GET THIS PART BACKWARDS



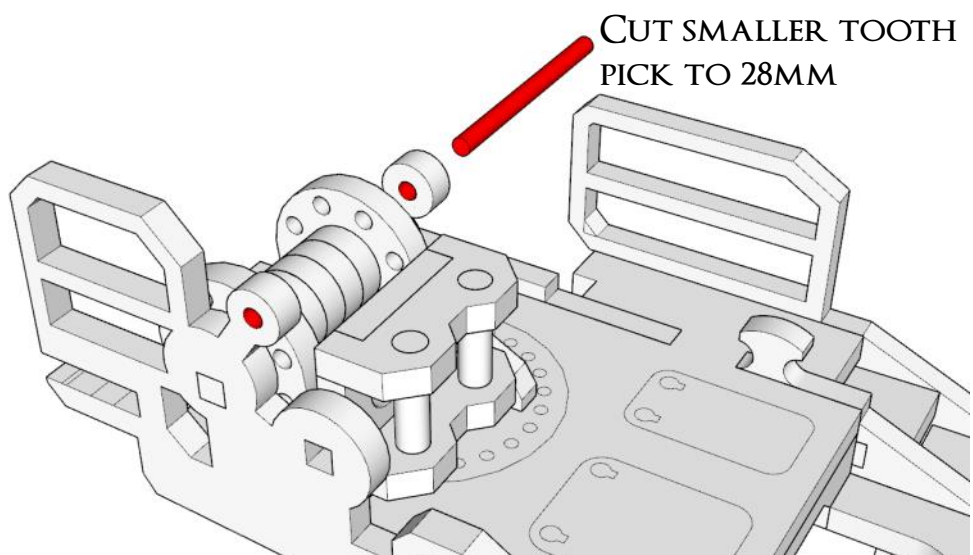
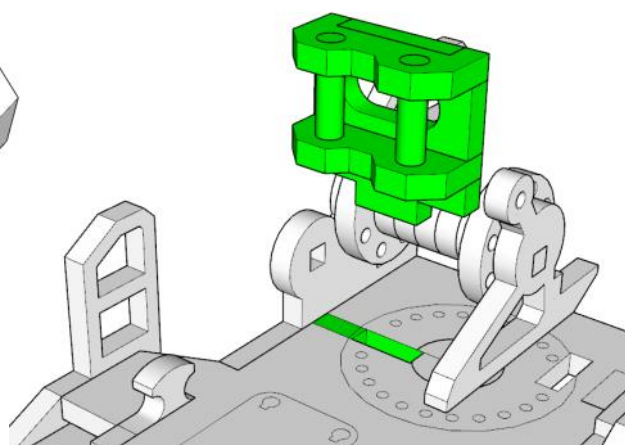
IF YOU HAVE ANY CHAIN,
ROPE OR WIRE TO WRAP
AROUND THE WINCH,
NOW IT THE BEST TIME



MAY NEED SOME WIGGLING
TO GET BOTH SIDES

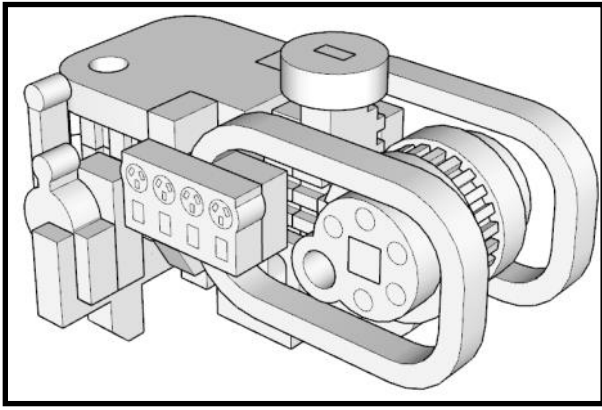


CUT TWO DOWELS
TO 15MM

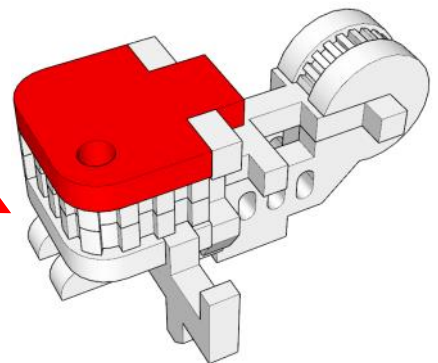
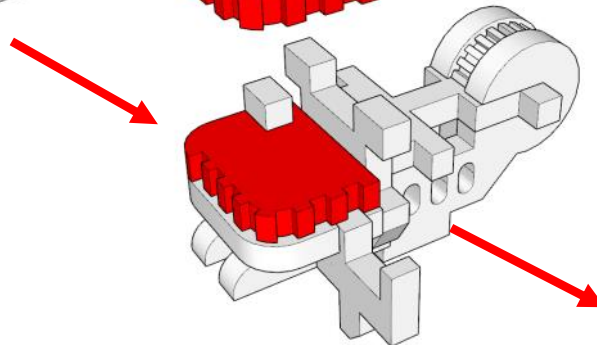
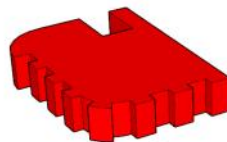
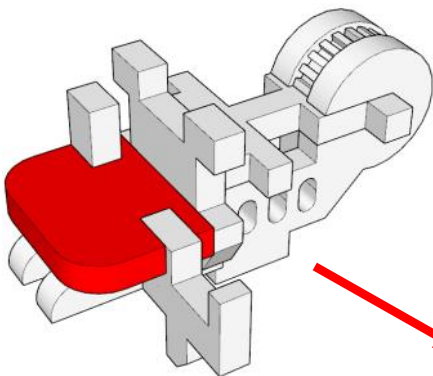
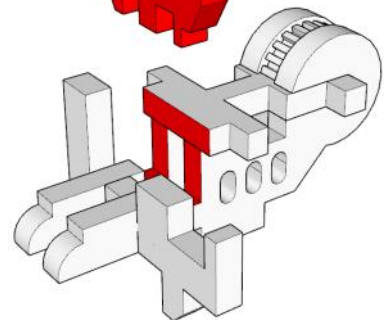
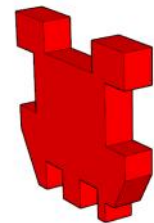
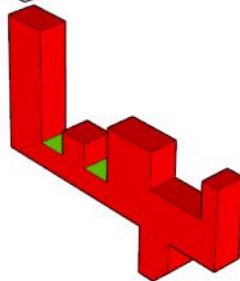
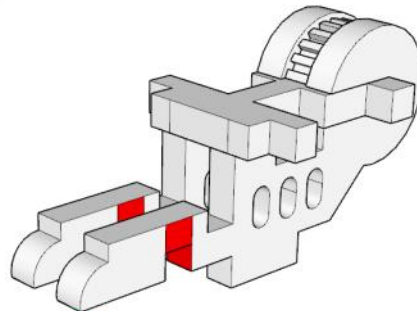
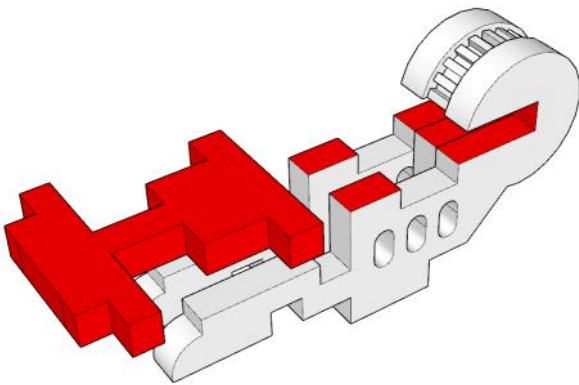
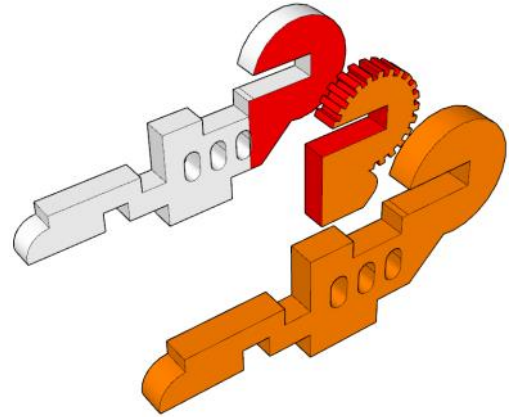


CUT SMALLER TOOTH
PICK TO 28MM

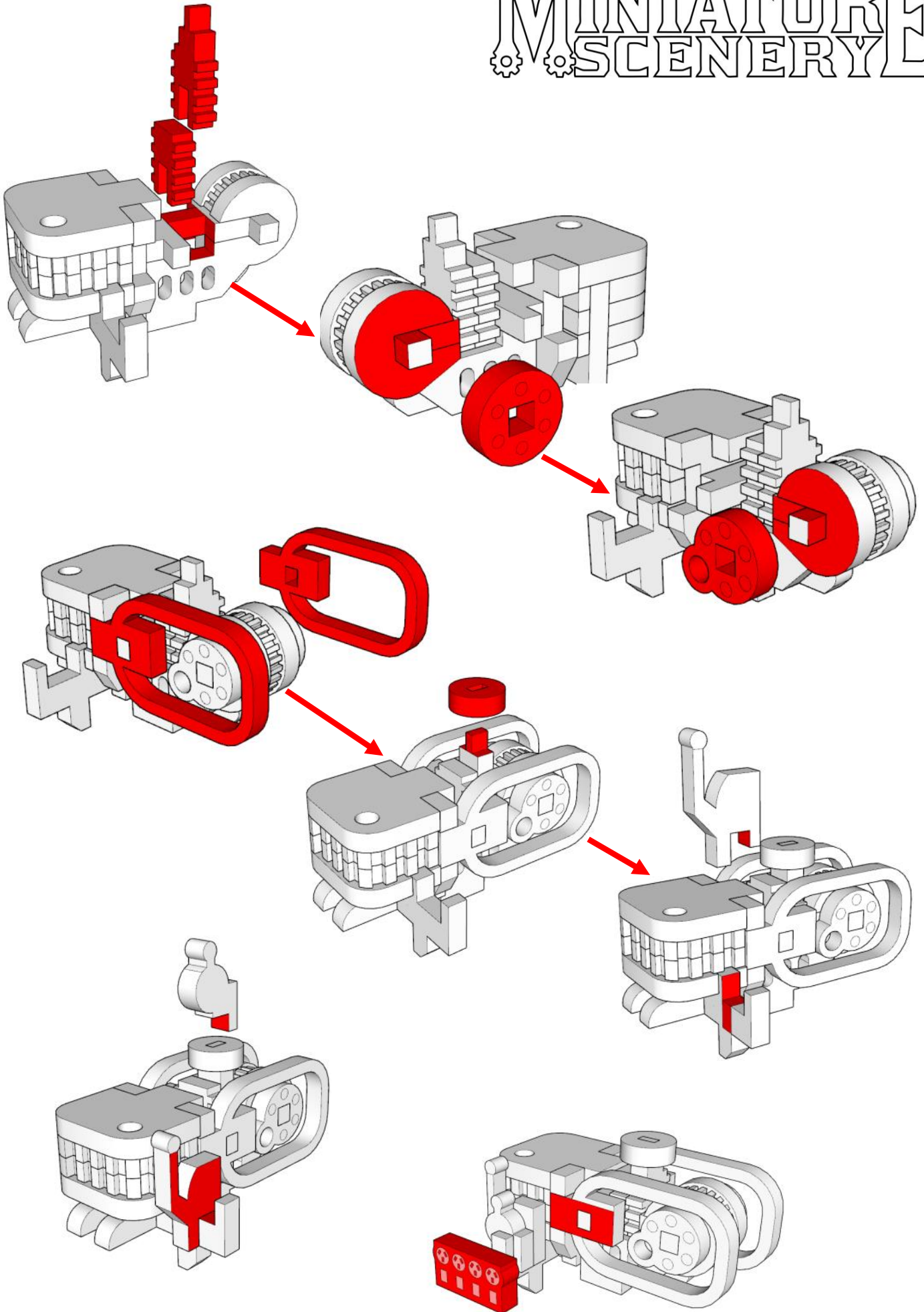
MINIATURE SCENERY



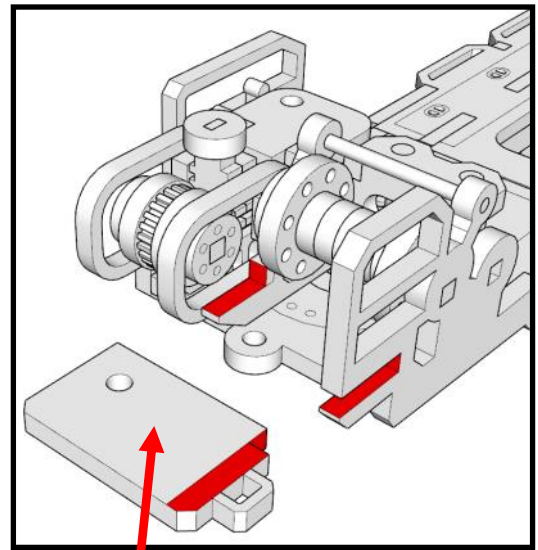
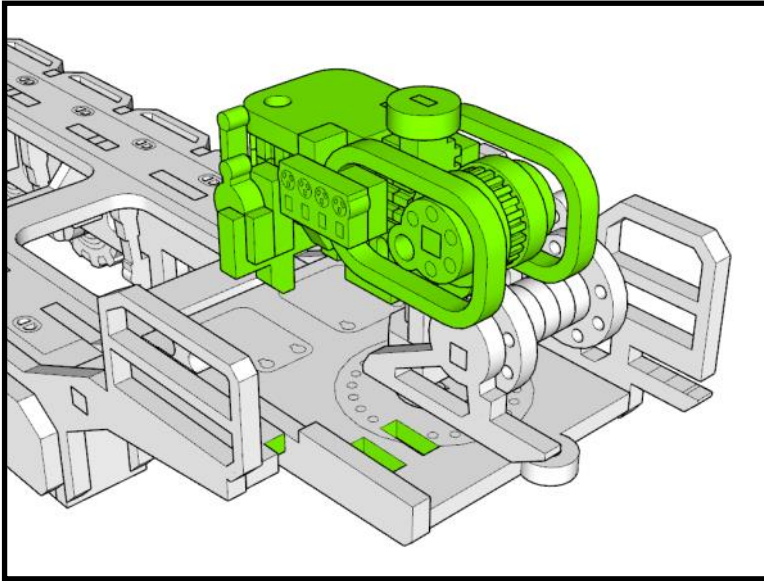
THIS SECTION: BUILDING THE GENERATOR



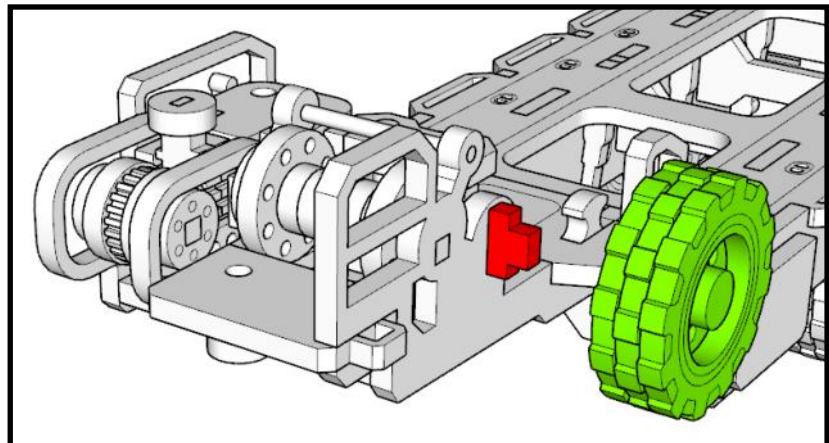
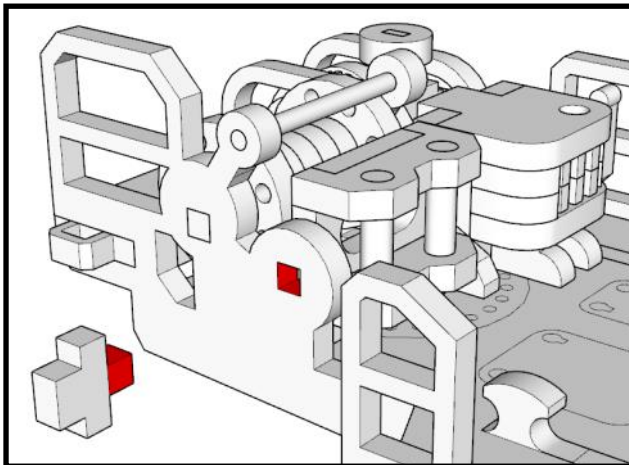
MINIATURE SCENERY



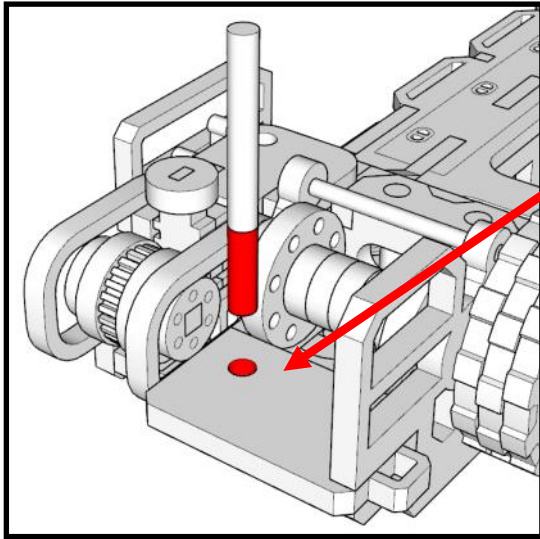
MINIATURE SCENERY



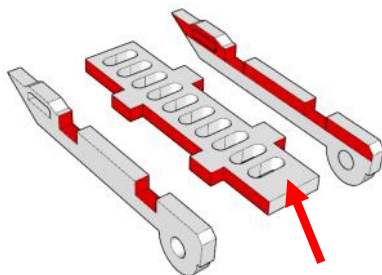
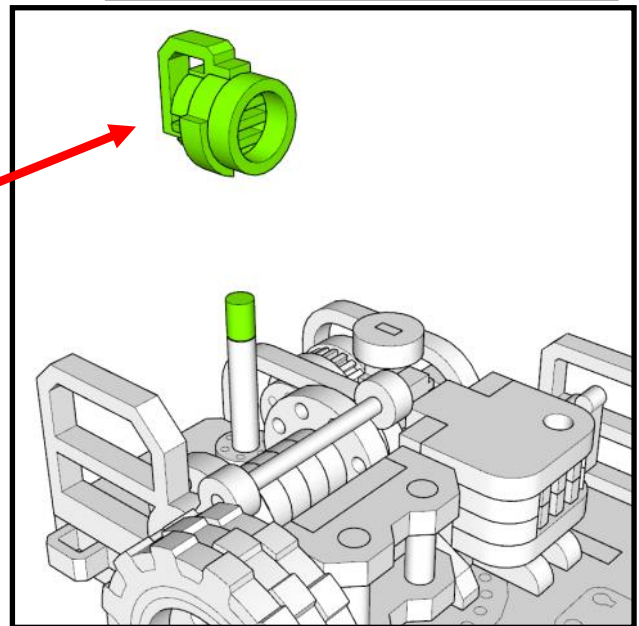
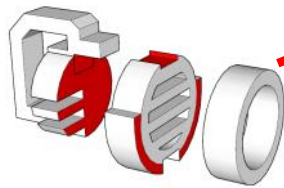
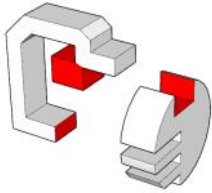
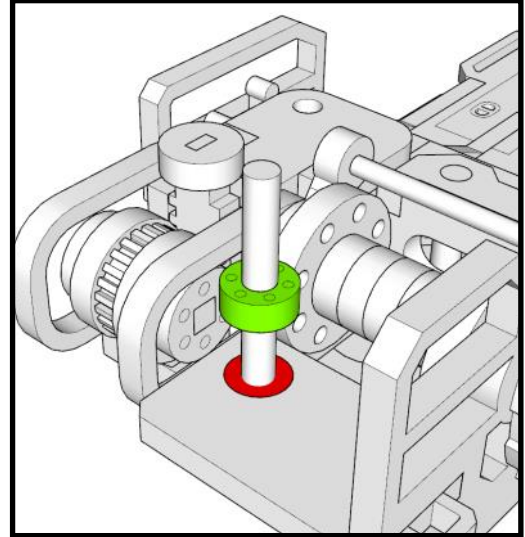
DIAMOND PLATING
ENGRAVE ON TOP



MINIATURE SCENERY



34MM LENGTH IN TOTAL
- 11MM INTO THE HOLES



X2

DIAMOND PLATING
ON TOP

ONLY APPLY GLUE ON
ENDS ONCE THE DOWEL
IS IN.

