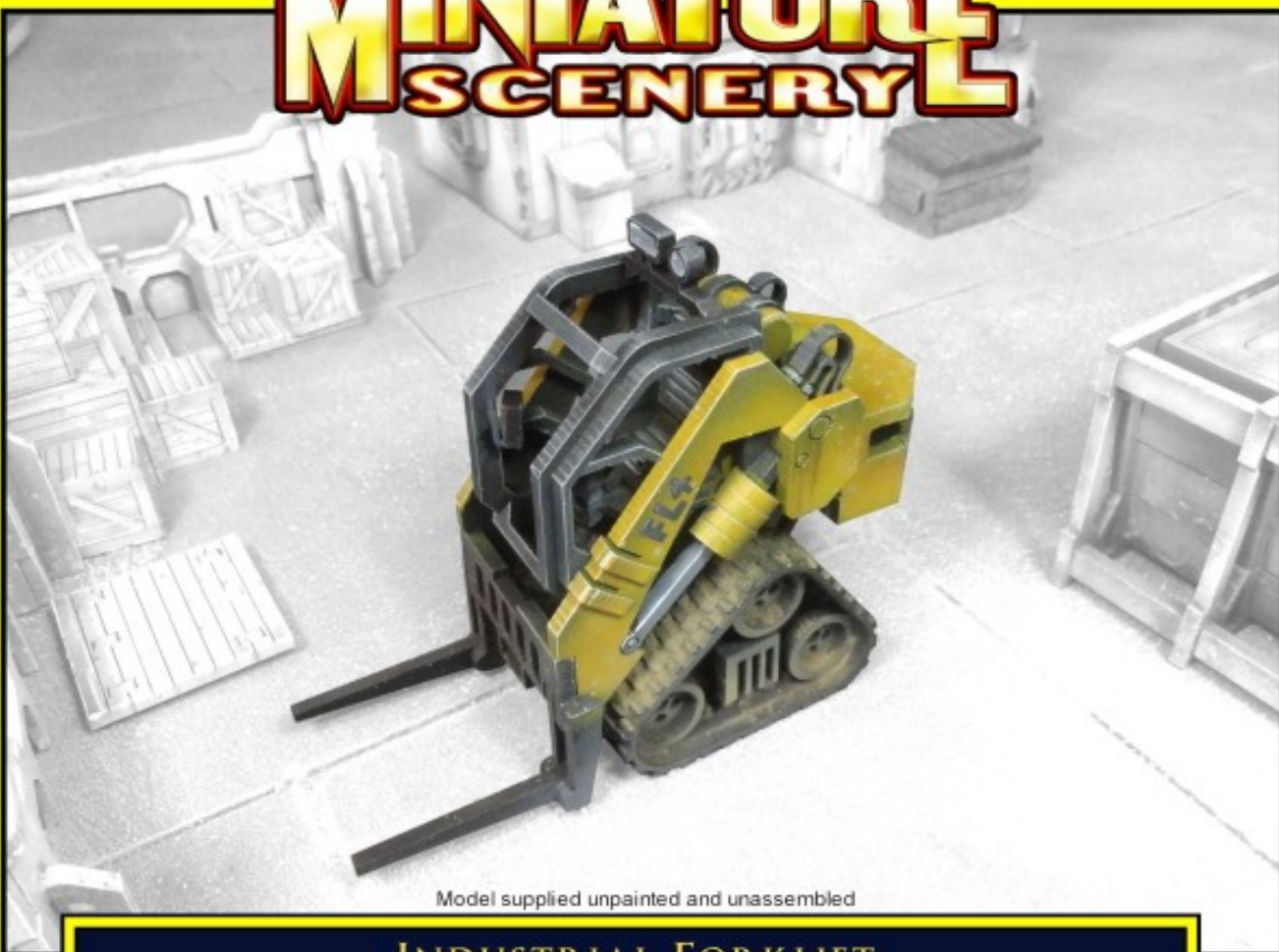


CNC WORKSHOP®

MINIATURE SCENERY



Model supplied unpainted and unassembled

INDUSTRIAL FORKLIFT

MINIATURE SCENERY MODELS ARE DESIGNED FOR 25MM (1 INCH) BASE MINIATURES, IDEAL FOR GAMERS AND COLLECTORS.

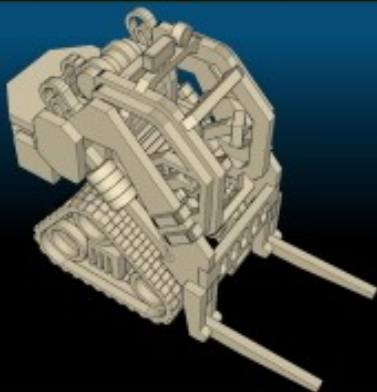
AT WWW.MINIATURESCENERY.COM WE PROVIDE DETAILED AND EASY TO FOLLOW ILLUSTRATED GUIDES FOR PAINTING TERRAIN.

HEAVY DUTY FORKLIFTS ARE A COMMON SIGHT AROUND ANY INDUSTRIAL AREA.

THE TRACKS ENABLE THIS FORKLIFT TO TURN ON THE SPOT.

THIS MODEL IS DESIGNED FOR USE AS TERRAIN OR A UNIQUE PLAYING PIECE.

ALL INSTRUCTIONS AVAILABLE ONLINE AT [HTTP://WWW.MINIATURESCENERY.COM](http://WWW.MINIATURESCENERY.COM)



ENCLOSED COMPONENTS AFTER ASSEMBLY



ADMINISTRATION BLOCK



STEALTH TRV



HUMPTY TRUCK



STREET SCENERY 1



Contents may contain small parts. Not suitable for children under 6 years of age

The exclusive copyright on the model designs and components within this case is the property of CNC Workshop Ltd. (c) Copyright CNC Workshop Ltd., 2004. All rights reserved.

MINIATURE SCENERY

INSTRUCTIONS HEAVY INDUSTRIAL FORKLIFT

Preparation

Once you clear some table space you will need a hobby knife and glue (PVA, wood glue, hobby glue) and a file or small piece of sandpaper to be used for cleaning up any tiny imperfections.

It's a good idea to familiarise yourself with how the pieces fit together before gluing.

Getting Started

I. Parts should remove easily from the board by pressing through and popping them out. It's a good idea to cut through the tiny joins first though, and some parts (particularly smaller, more detailed parts) may need more careful persuasion.

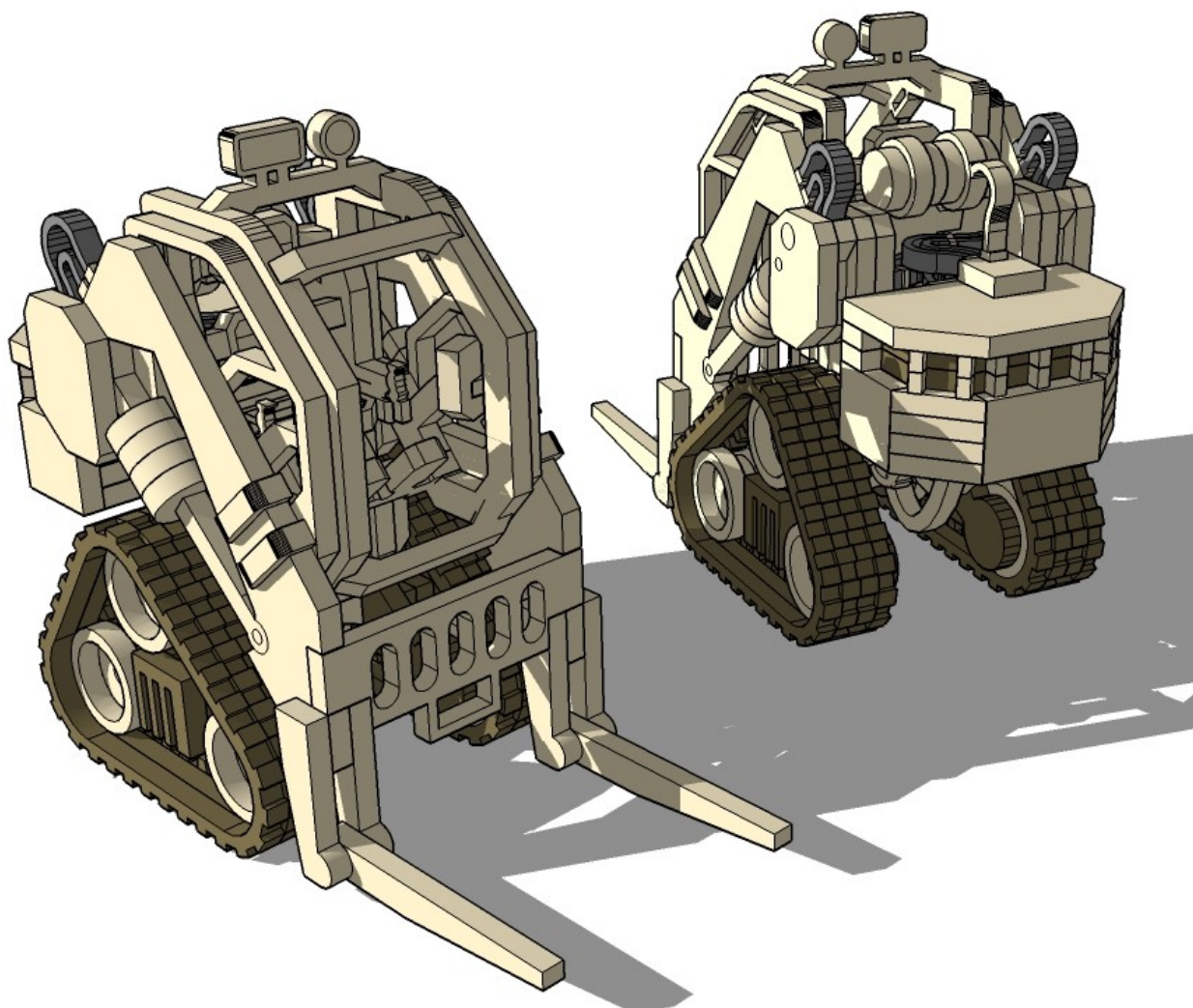
II. Use a file or sand paper last to completely remove the tabs that might remain.

III. Parts may be a very tight fit, slight trimming or sanding of parts may be needed for ease of assembly.

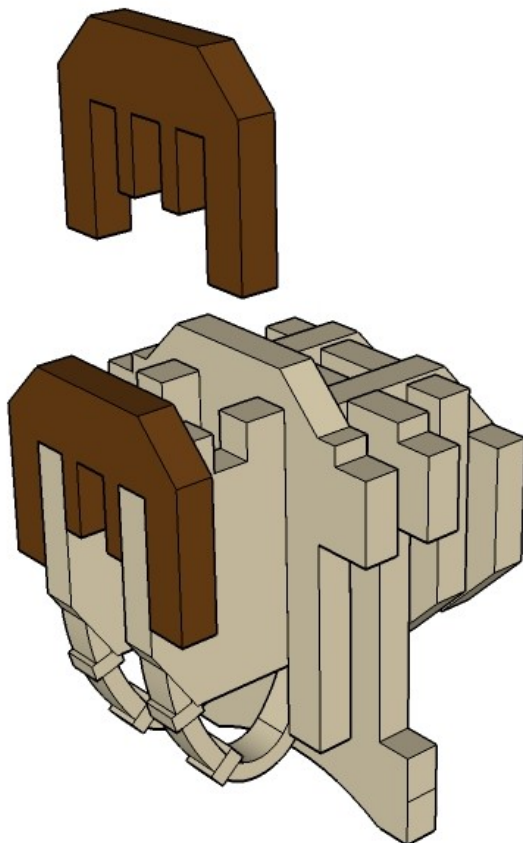
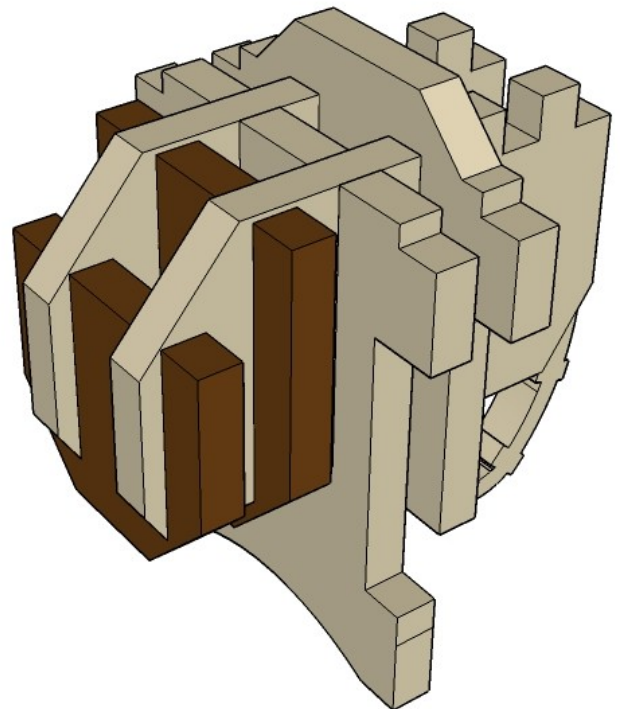
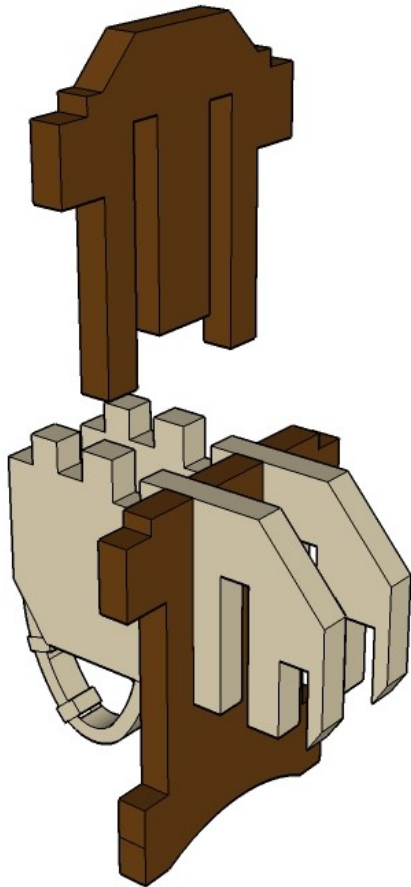
Construction

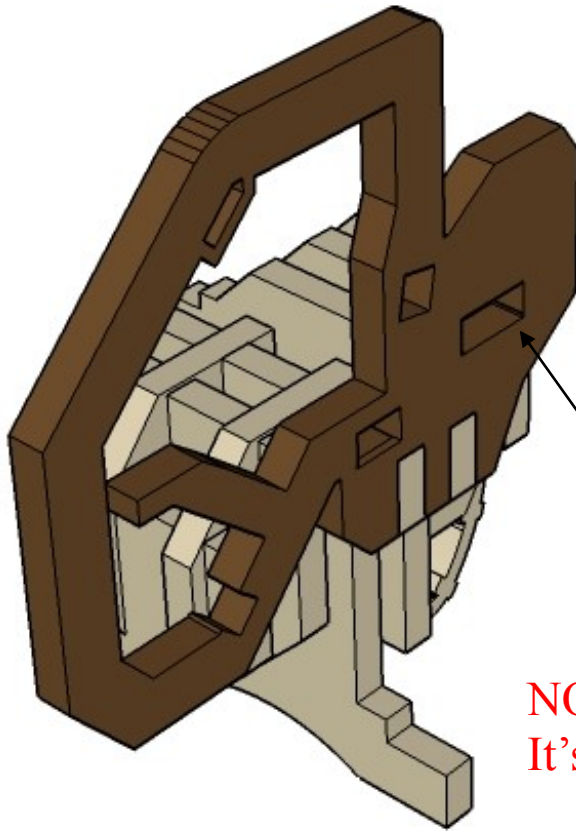
Slot the parts together as shown by the pictures below, applying glue wherever there is a connection.

Allow the model to completely dry before painting it. This is a complex kit with many small parts. Allowing each section to dry thoroughly before heading to the next is strongly recommended.



Some parts of this kit are very fine, or have engraving very close to edges. Make sure you cut through any tabs carefully with a hobby knife first to avoid damage.

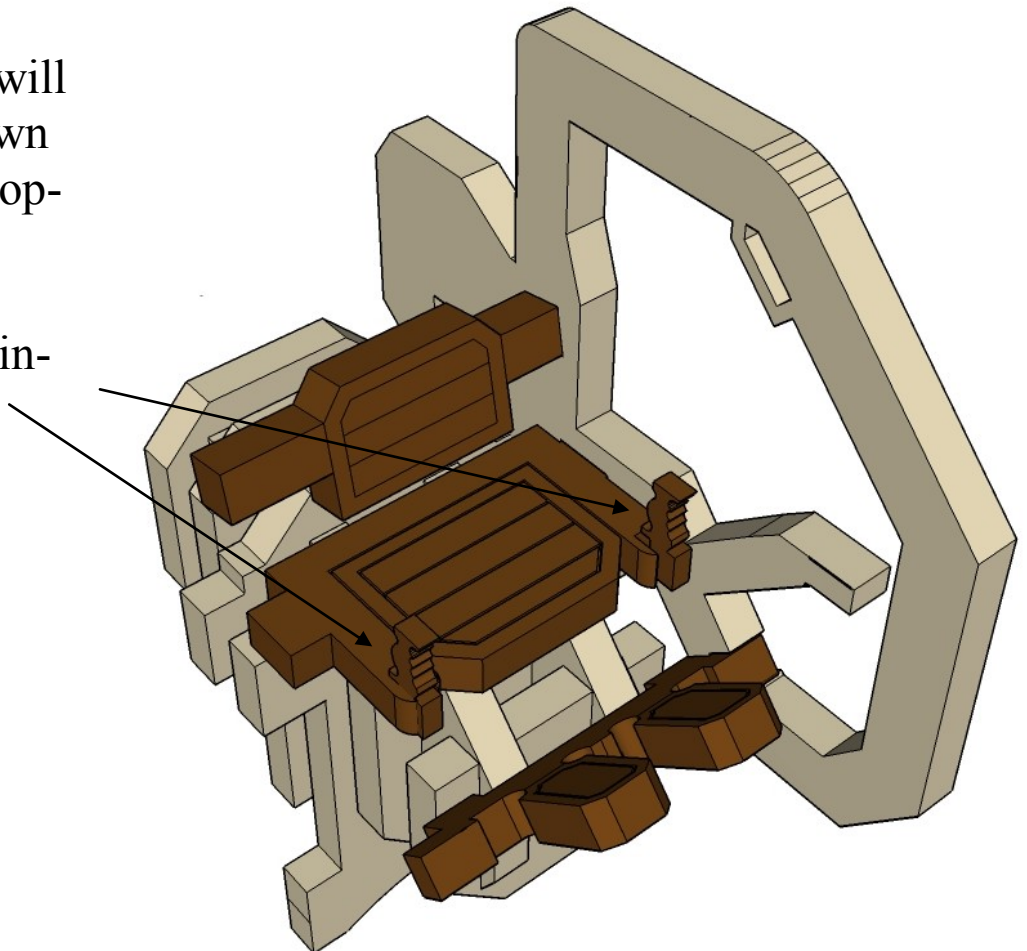




NOTE CAREFULLY Position of Slot.
It's different from one side to the other.

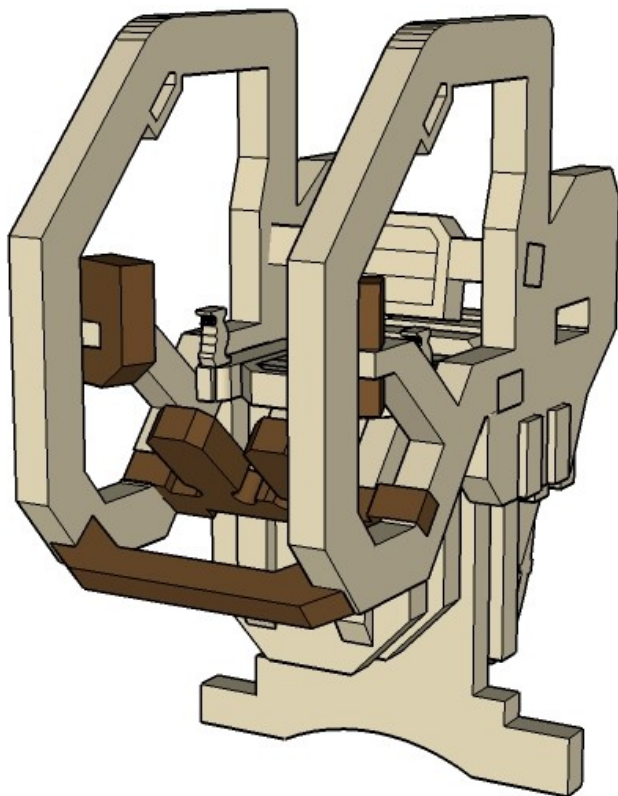
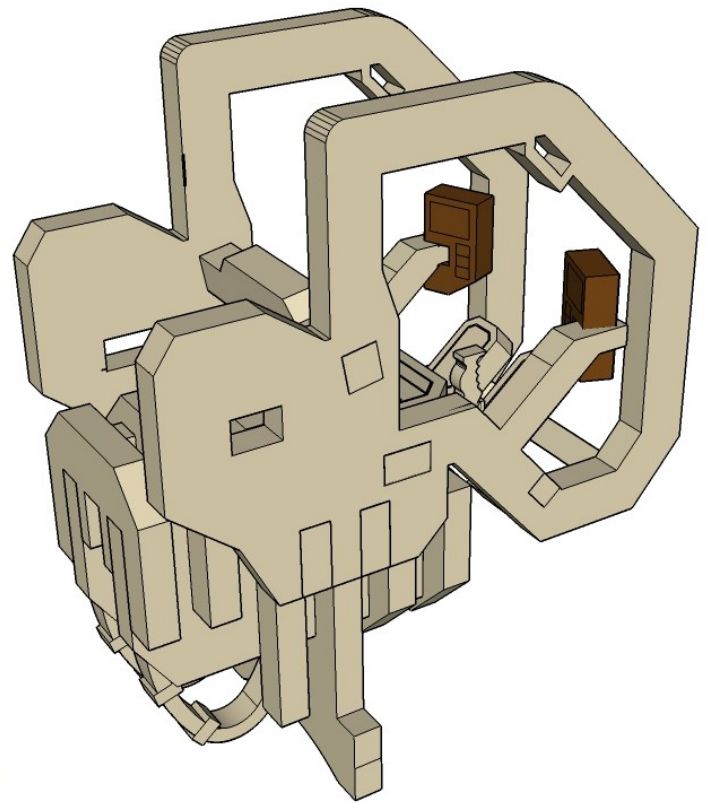
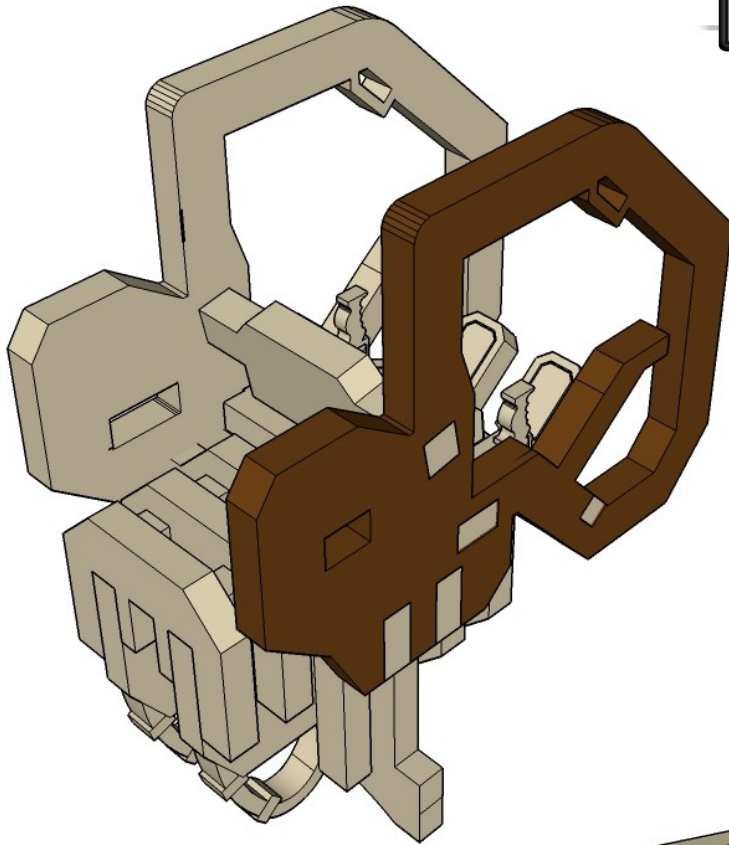
The control grips will
need to be split down
the middle to fit prop-
erly.

Don't worry, I've in-
cluded spares.



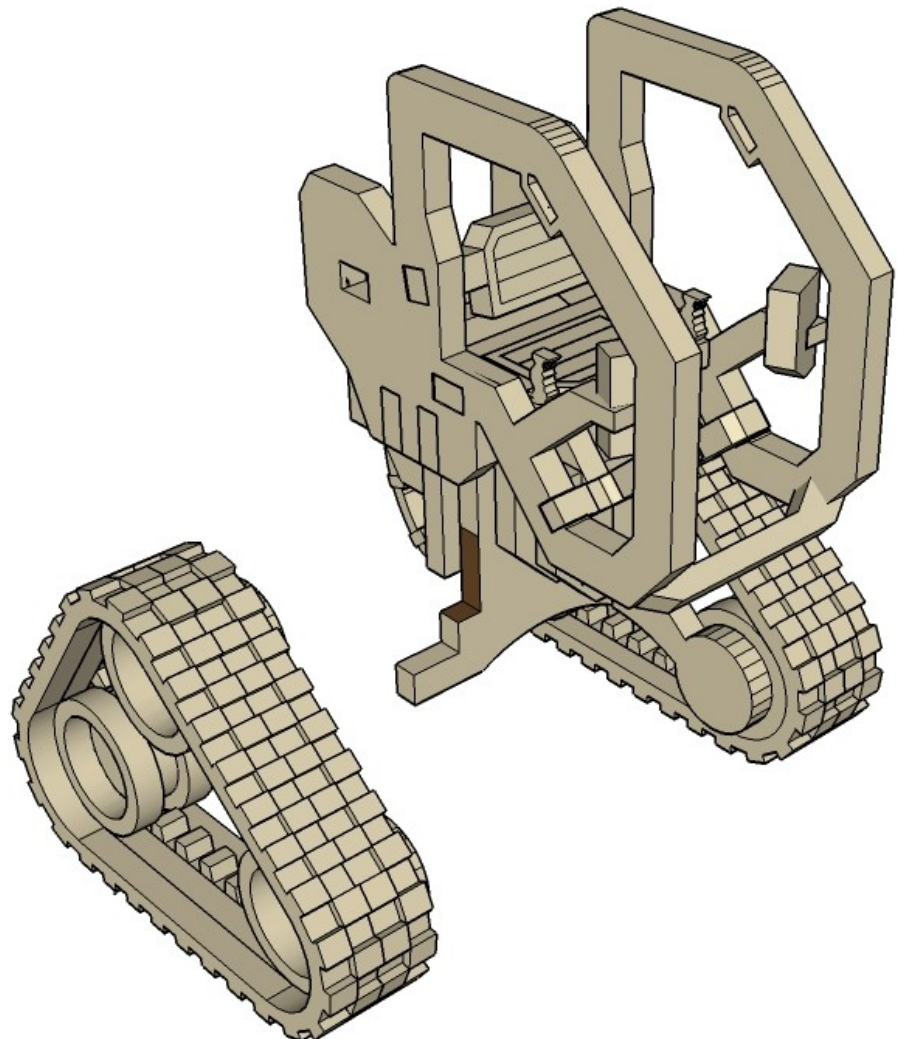
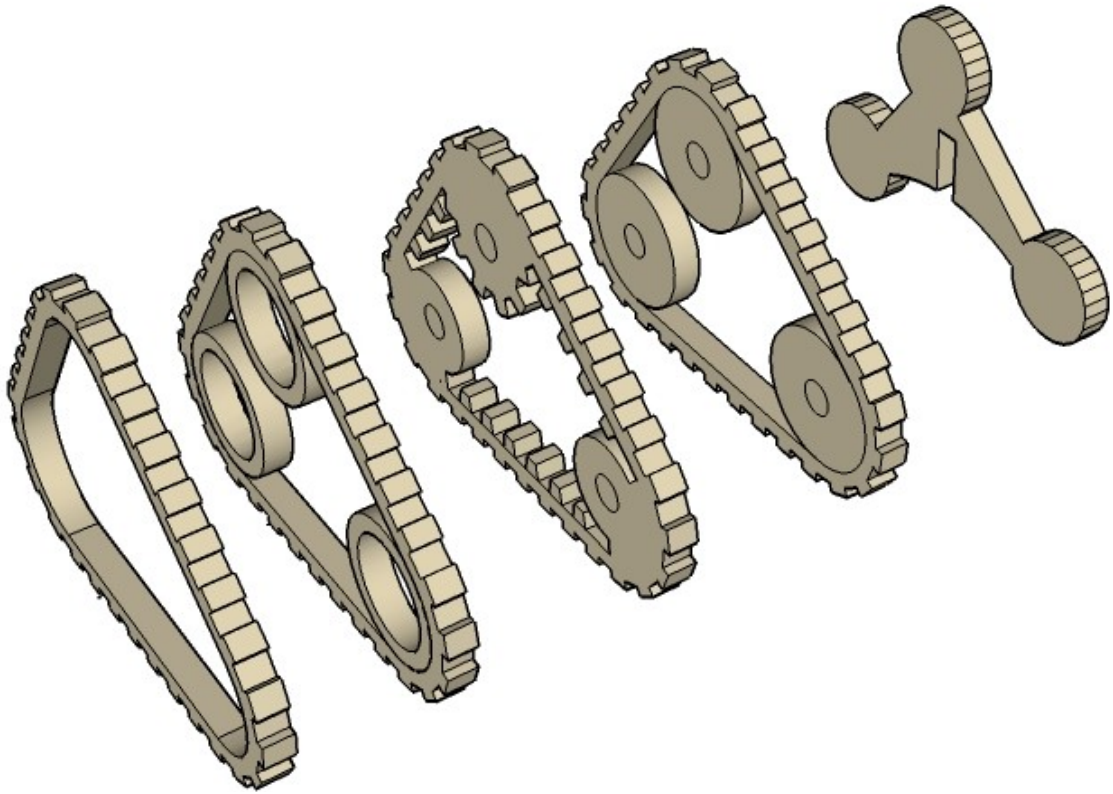
CNC WORKSHOP

MINIATURE SCENERY



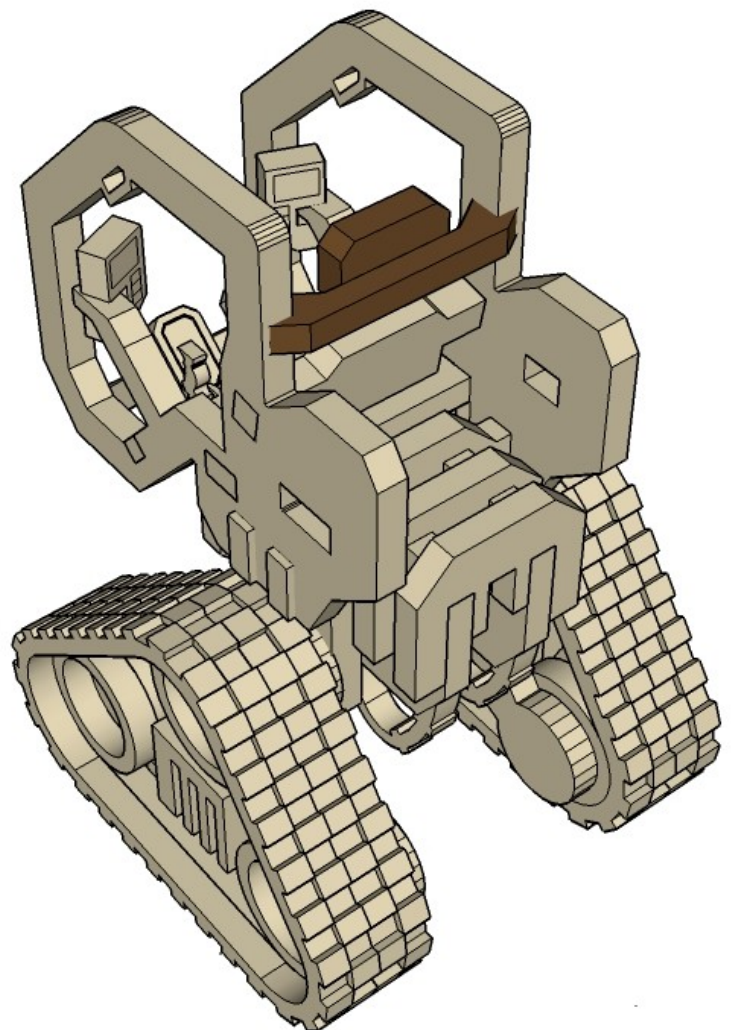
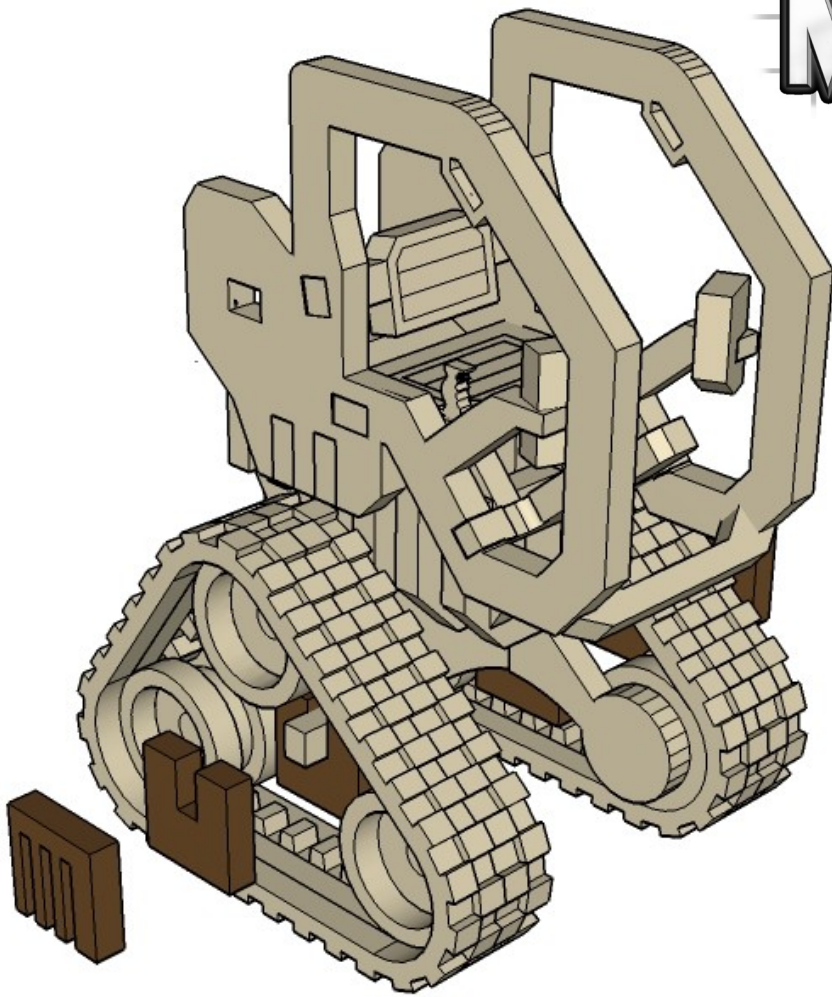
CNC WORKSHOP

MINIATURE SCENERY



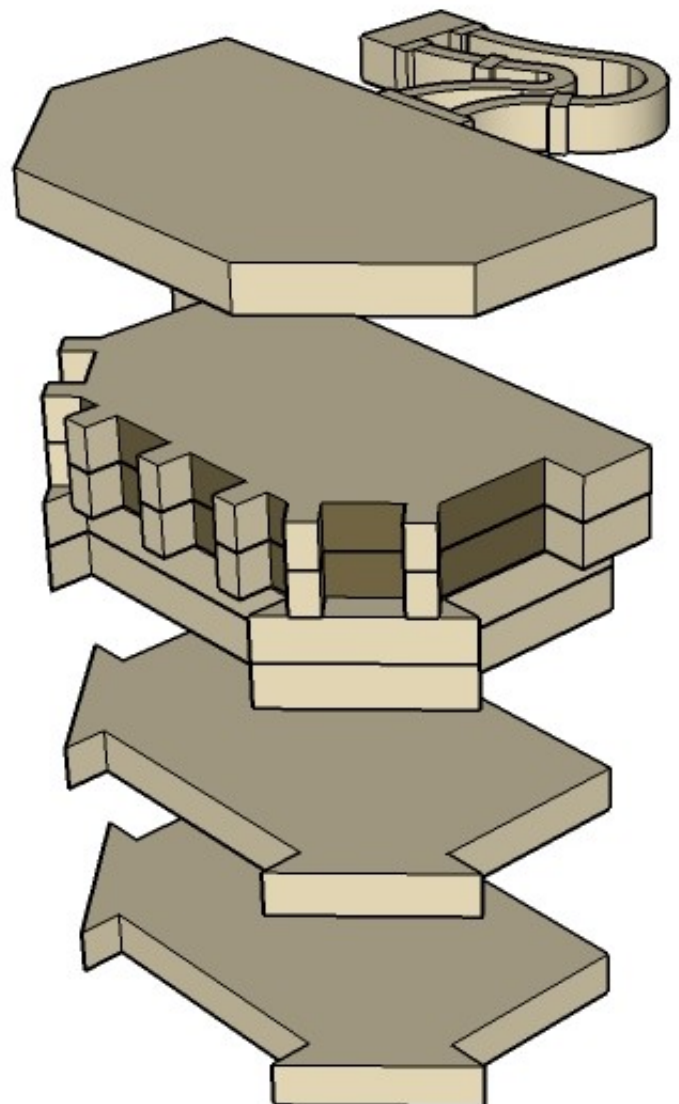
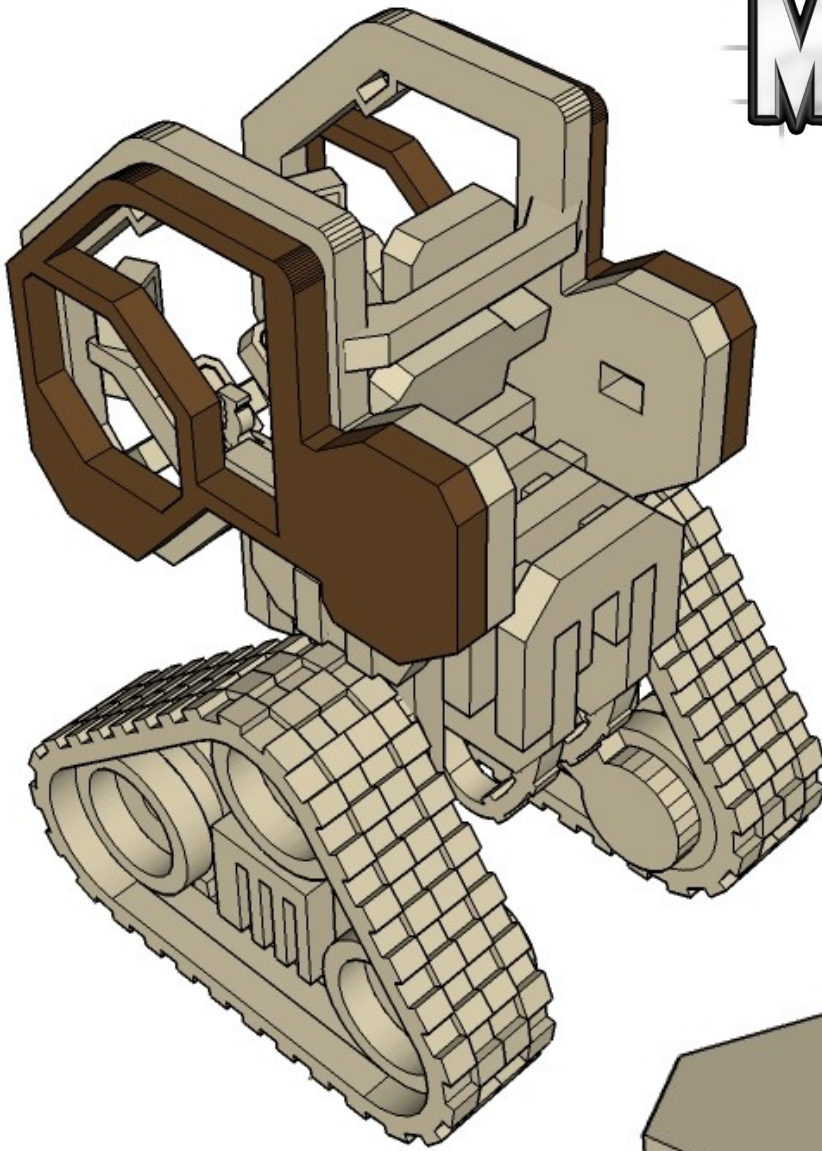
CNC WORKSHOP

MINIATURE SCENERY



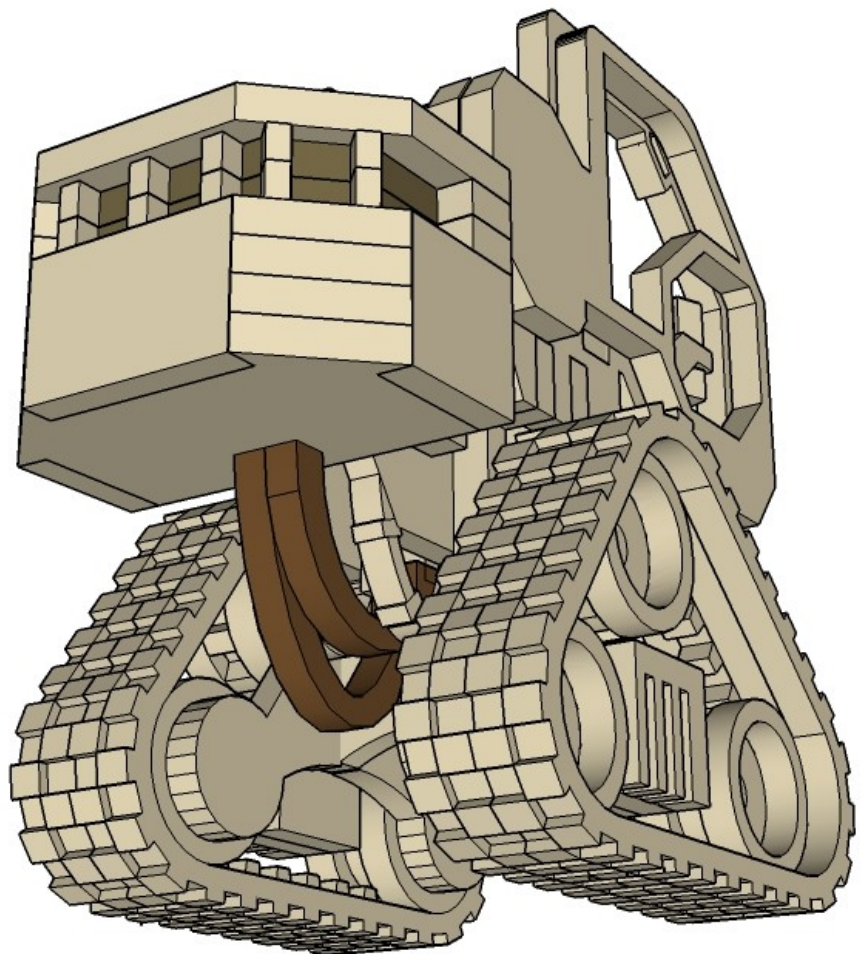
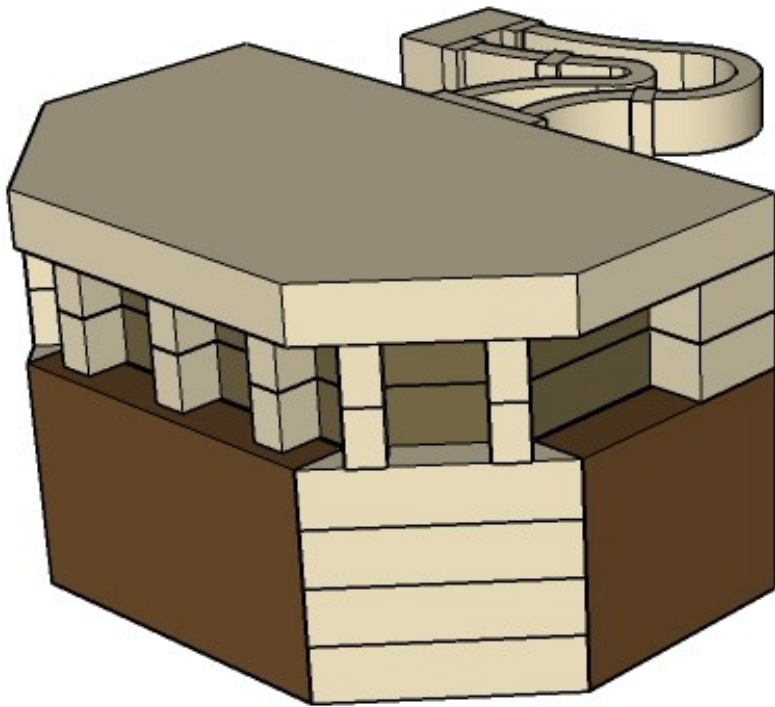
CNC WORKSHOP

MINIATURE SCENERY



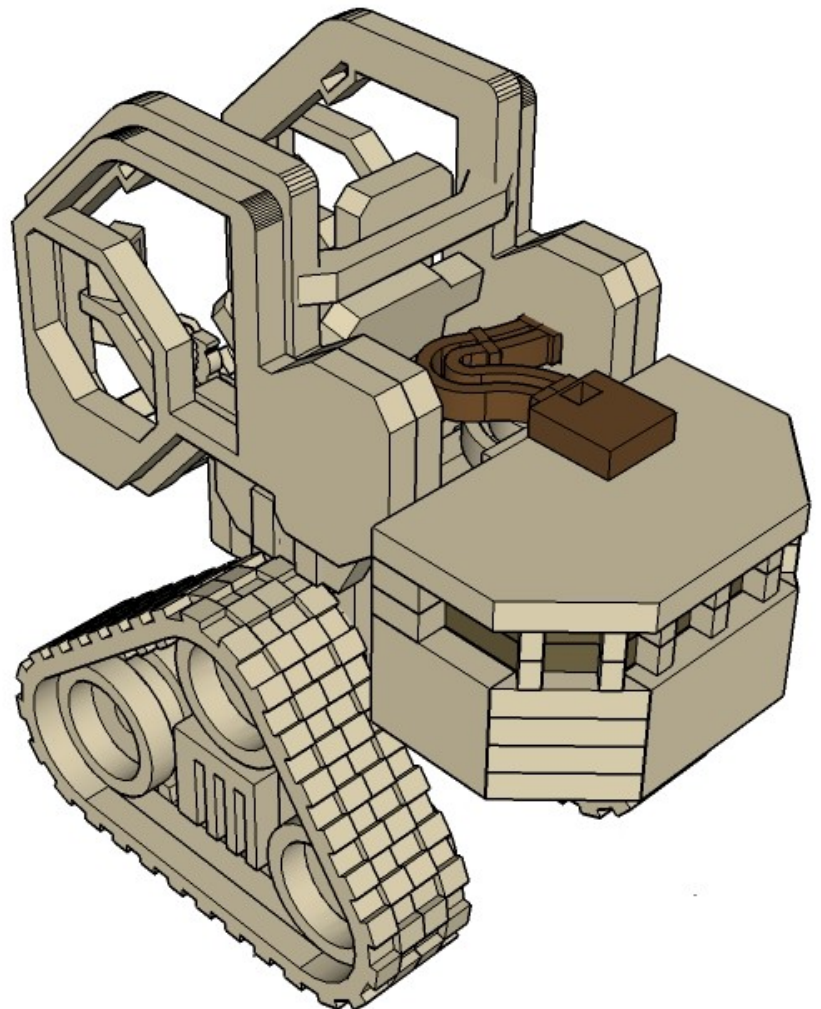
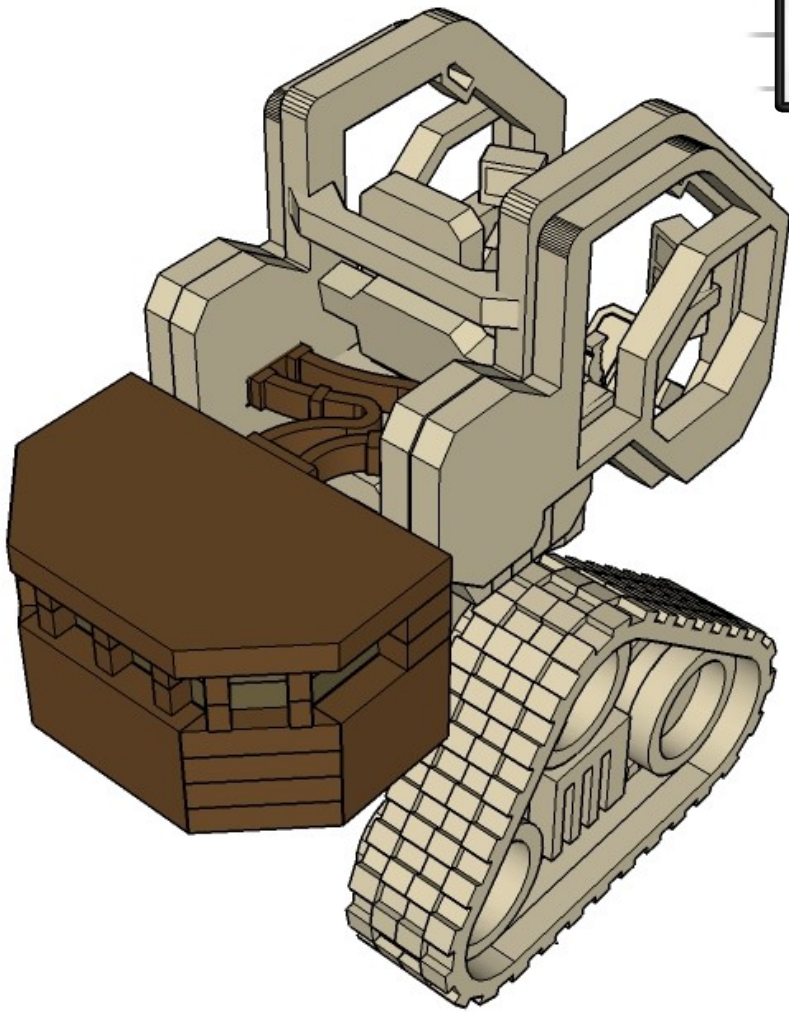
CNC WORKSHOP

MINIATURE SCENERY



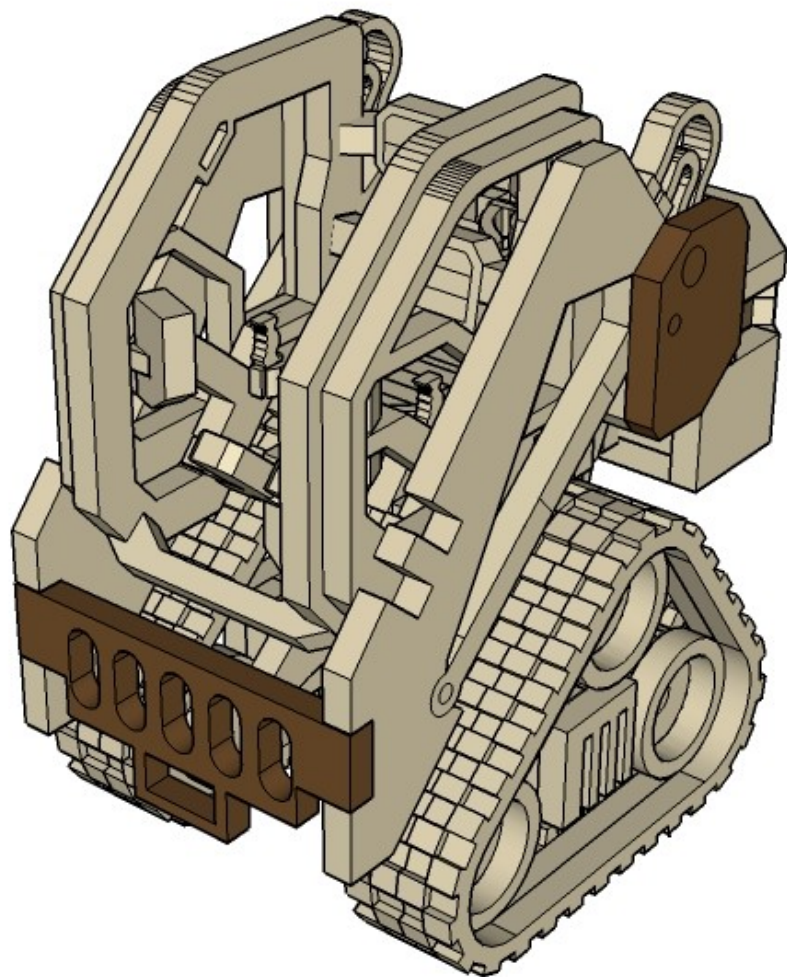
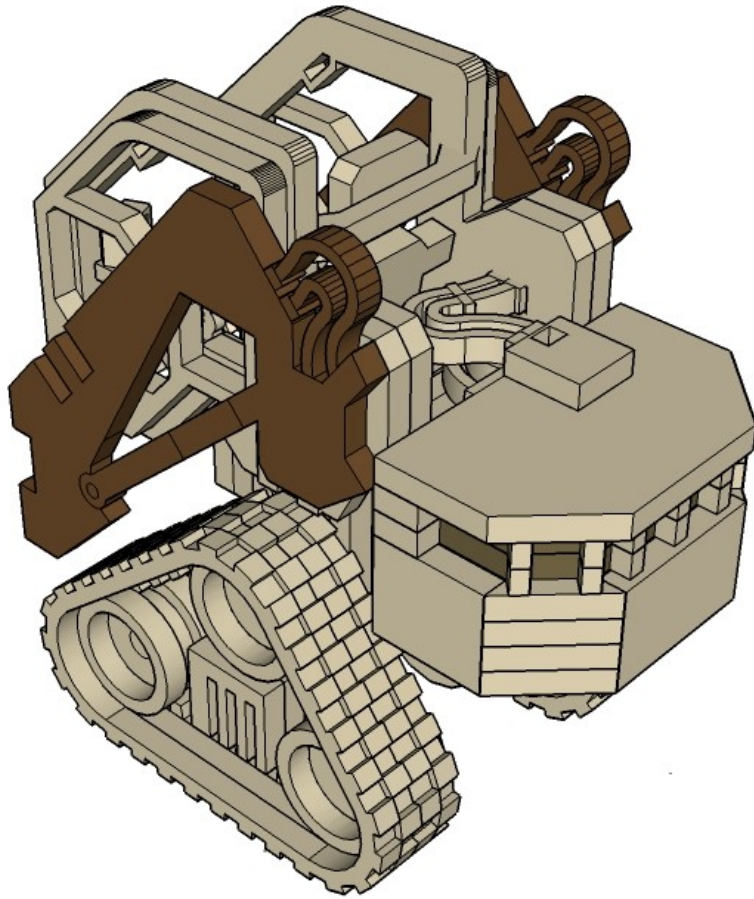
CNC WORKSHOP

MINIATURE SCENERY



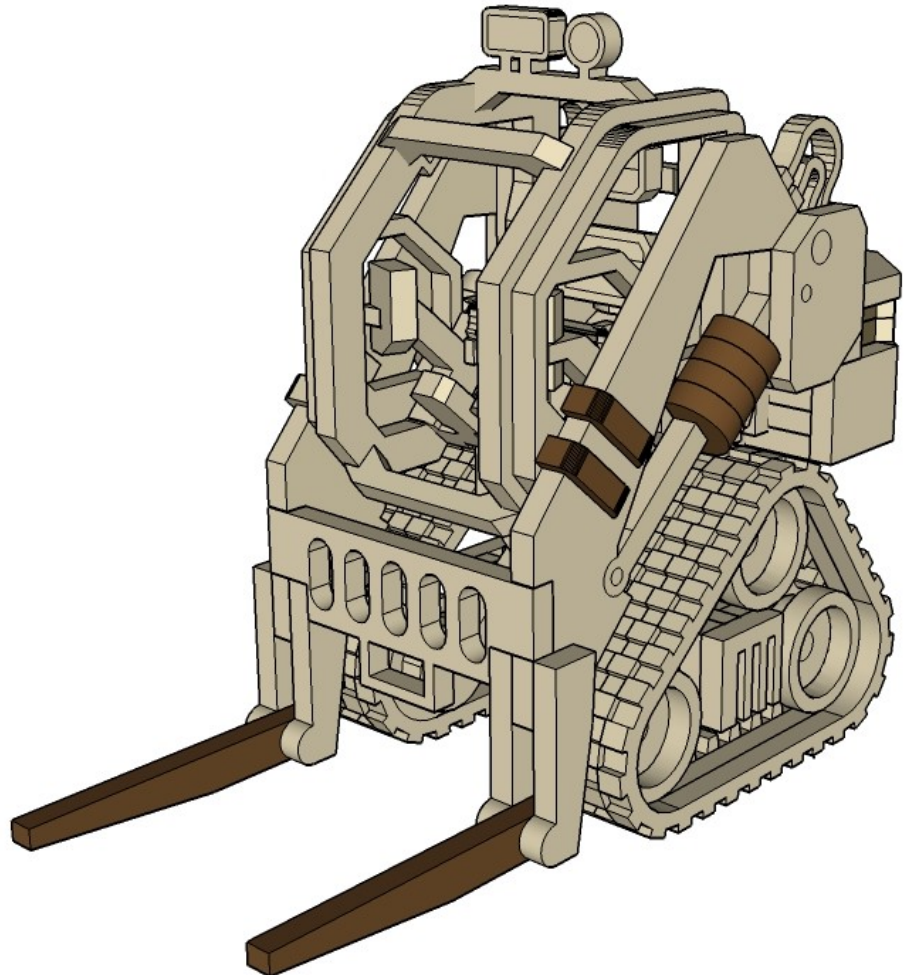
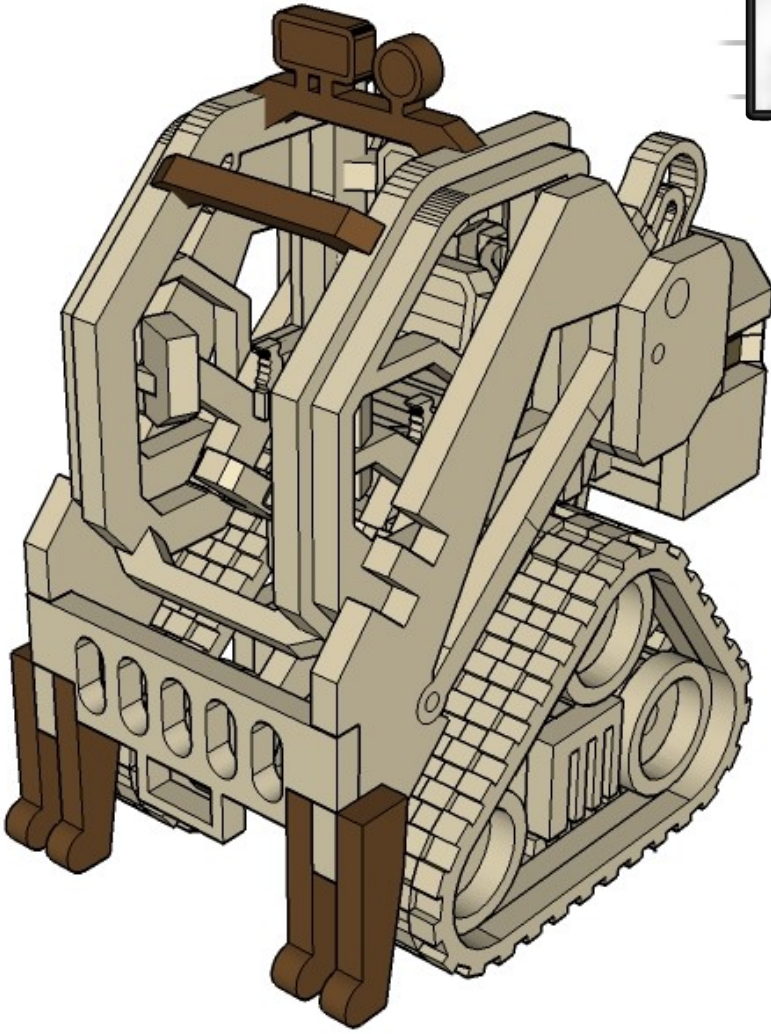
CNC WORKSHOP

MINIATURE SCENERY



CNC WORKSHOP

MINIATURE SCENERY



CNC WORKSHOP

MINIATURE SCENERY

