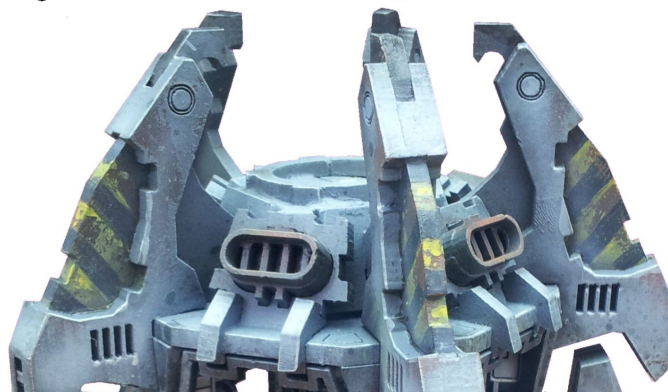


CNC WORKSHOP®

MINIATURE SCENERY



Model supplied unpainted and unassembled

MKII ADVANCED TROOP LAND RAIDER

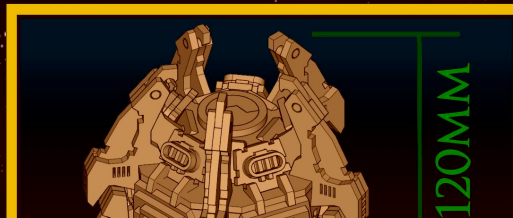
MINIATURE SCENERY MODELS ARE DESIGNED FOR 25MM (1 INCH) BASE MINIATURES, IDEAL FOR GAMERS AND COLLECTORS

AT WWW.MINIATURESCENERY.COM WE PROVIDE DETAILED AND EASY TO FOLLOW ILLUSTRATED GUIDES FOR PAINTING TERRAIN.

ALL INSTRUCTIONS AVAILABLE ONLINE AT [HTTP://WWW.MINIATURESCENERY.COM](http://WWW.MINIATURESCENERY.COM)



POLICE TRV



120MM



ADMINISTRATION BLOCK

Mk II Advanced troop lander

Preparation

Once you clear some table space you will need a hobby knife and glue (PVA, wood glue, hobby glue) and a file or small piece of sandpaper to be used for cleaning up any tiny imperfections.

It's a good idea to familiarise yourself with how the pieces fit together before gluing.

Getting Started

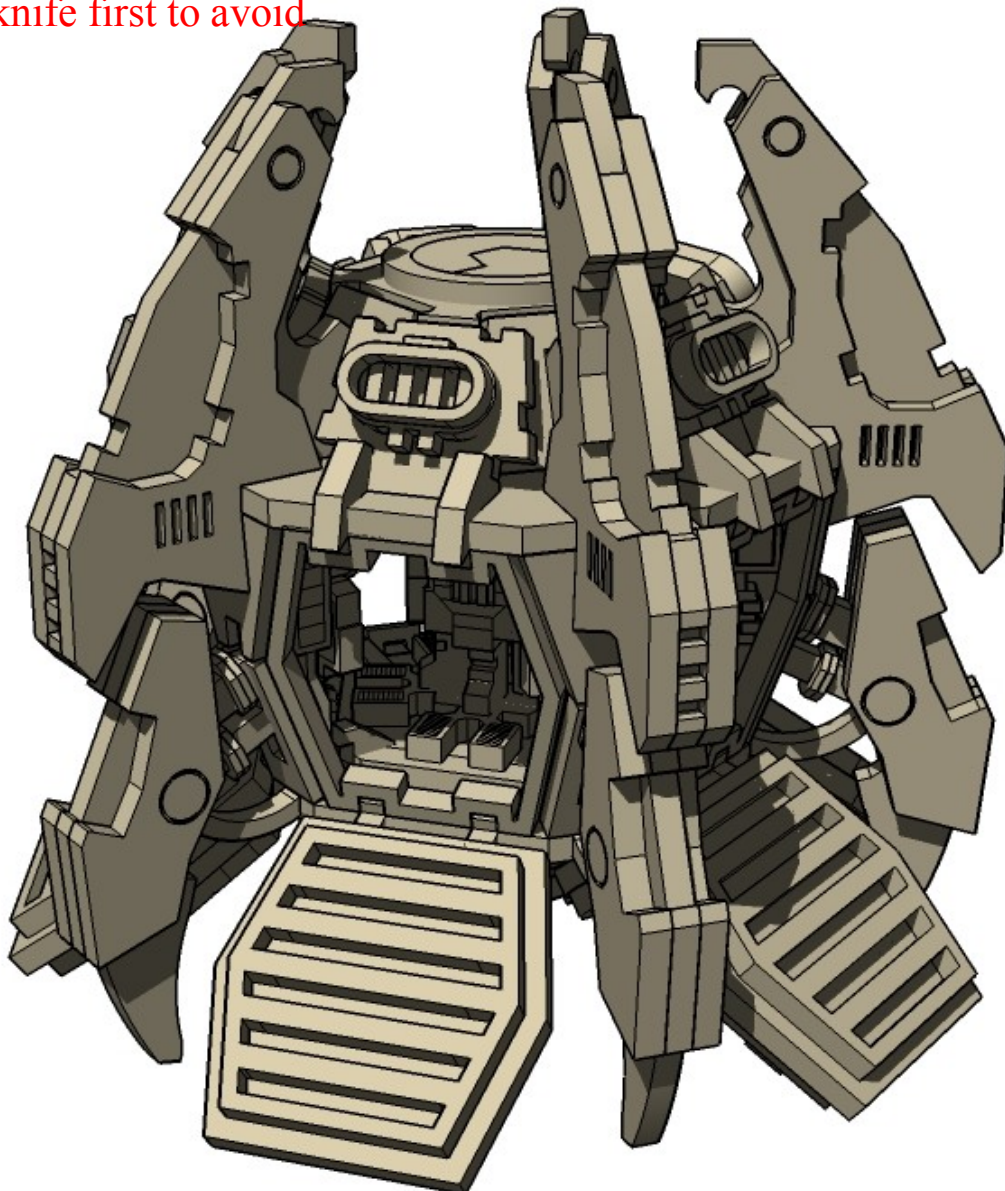
- I. Parts should remove easily from the board by pressing through and popping them out. It's a good idea to cut through the tiny joins first though, and some parts (particularly smaller, more detailed parts) may need more careful persuasion.
- II. Use a file or sand paper last to completely remove the tabs that might remain.
- III. Parts may be a very tight fit, slight trimming or sanding of parts may be needed for ease of assembly.

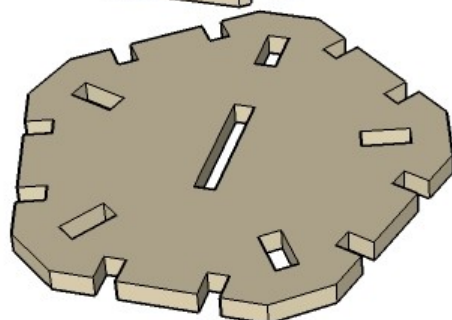
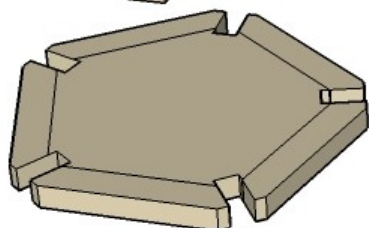
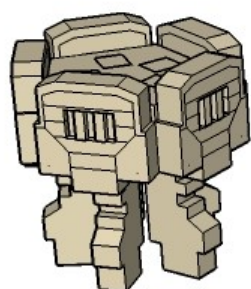
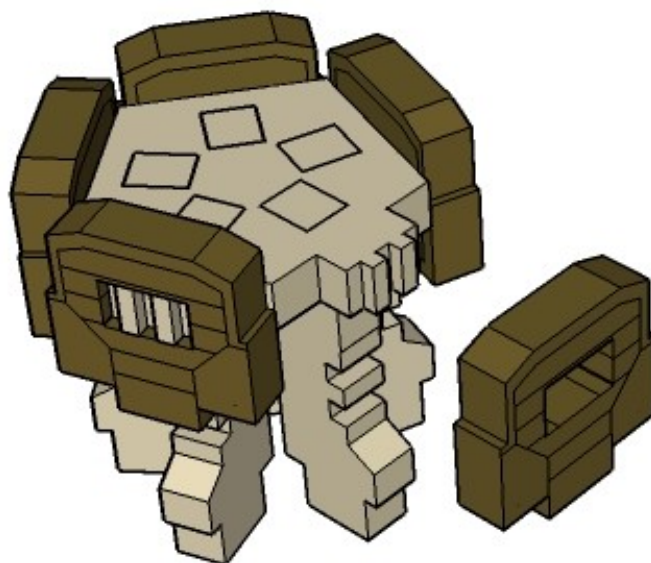
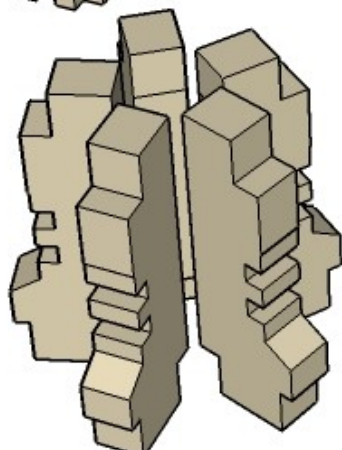
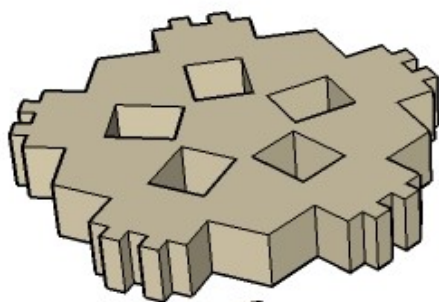
Construction

Slot the parts together as shown by the pictures below, applying glue wherever there is a connection.

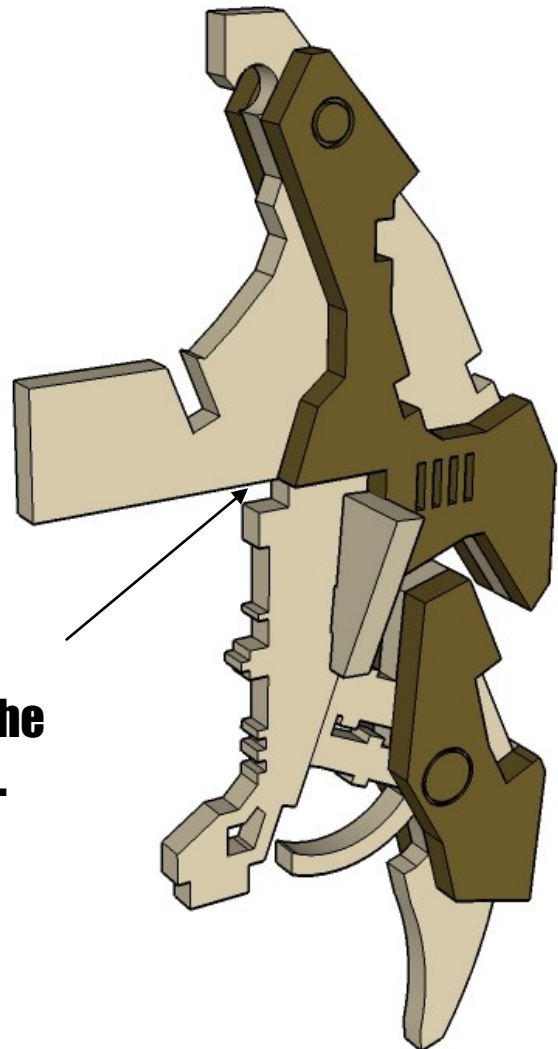
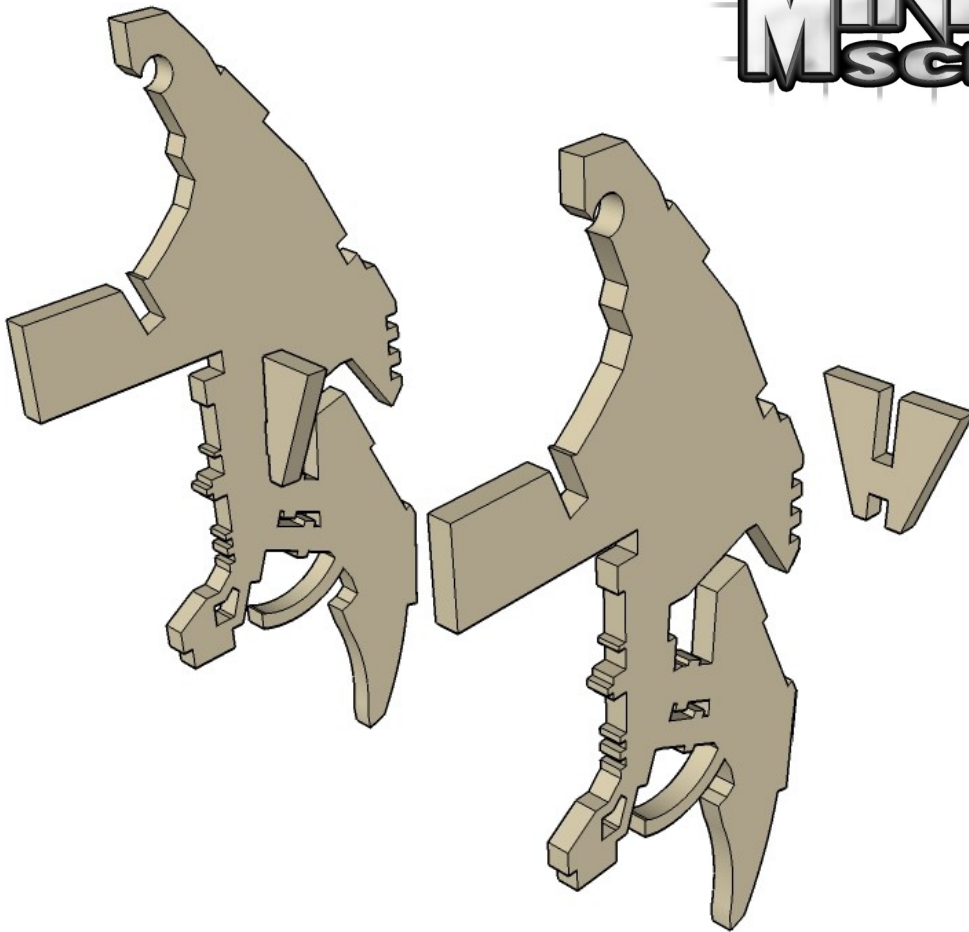
Allow the model to completely dry before painting it. This is a complex kit with many small parts. Allowing each section to dry thoroughly before heading to the next is strongly recommended.

Some parts of this kit are very fine, or have engraving very close to edges. Make sure you cut through any tabs carefully with a hobby knife first to avoid damage.

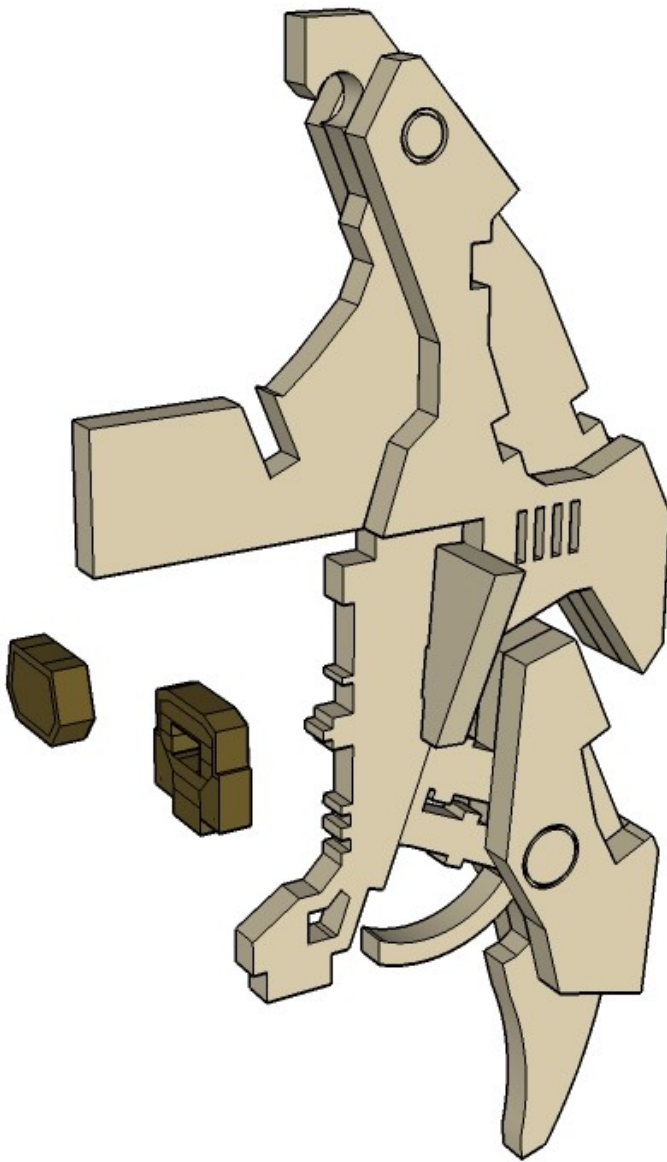


**NOTE:**

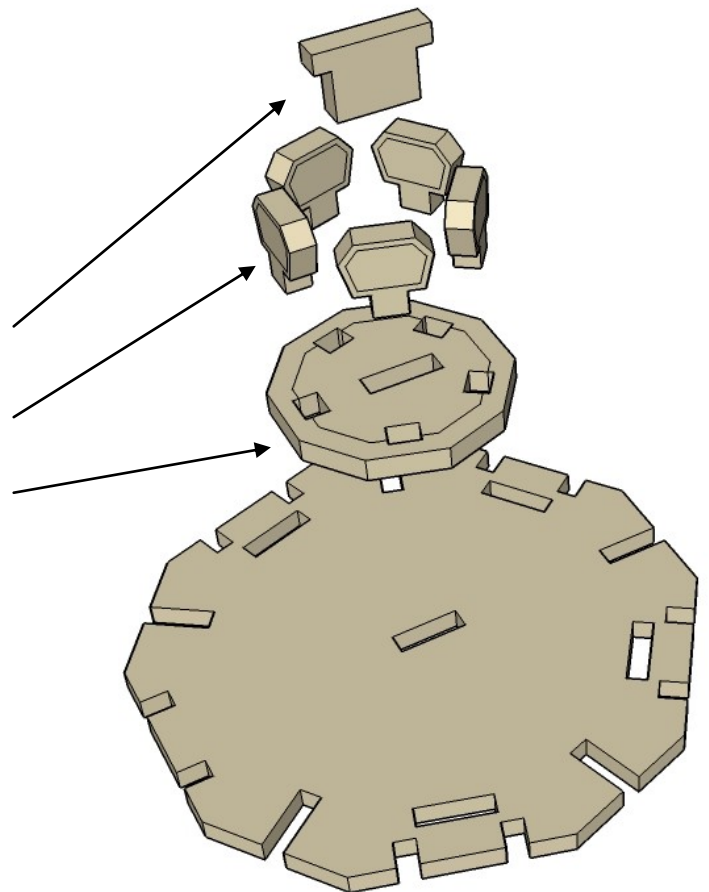
If you do not intend to finish your model with the doors open, the interior parts shown on this page are not required.

**NOTE:**

Keep this slot clear, and line the parts up carefully as shown.

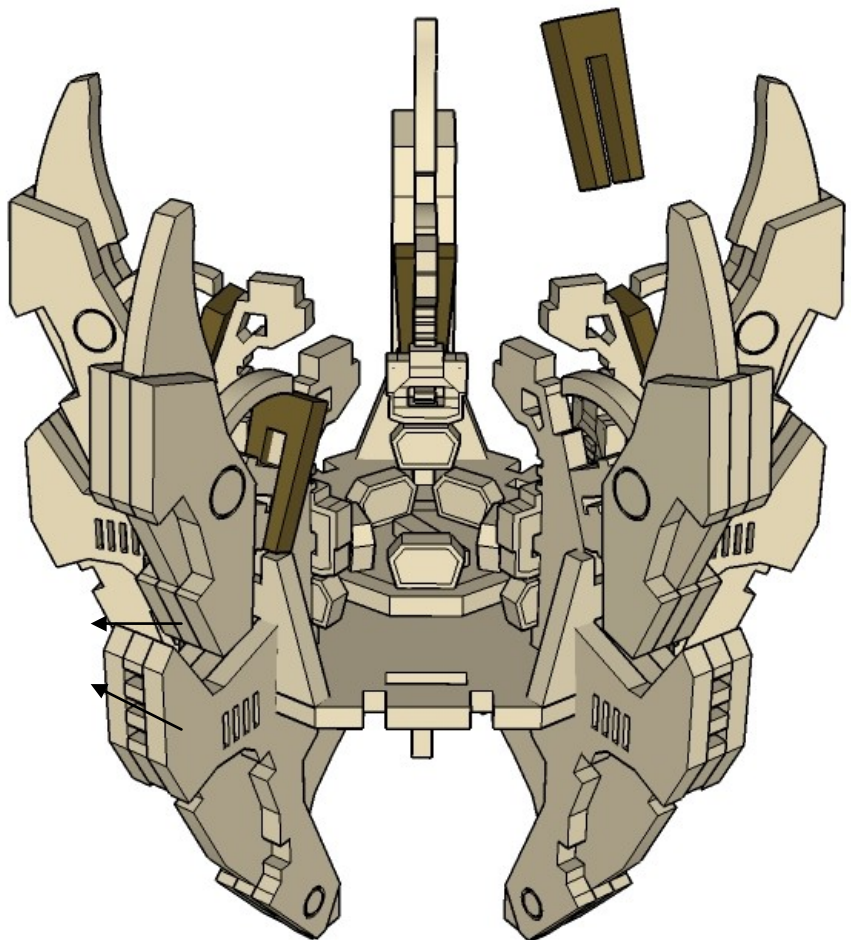
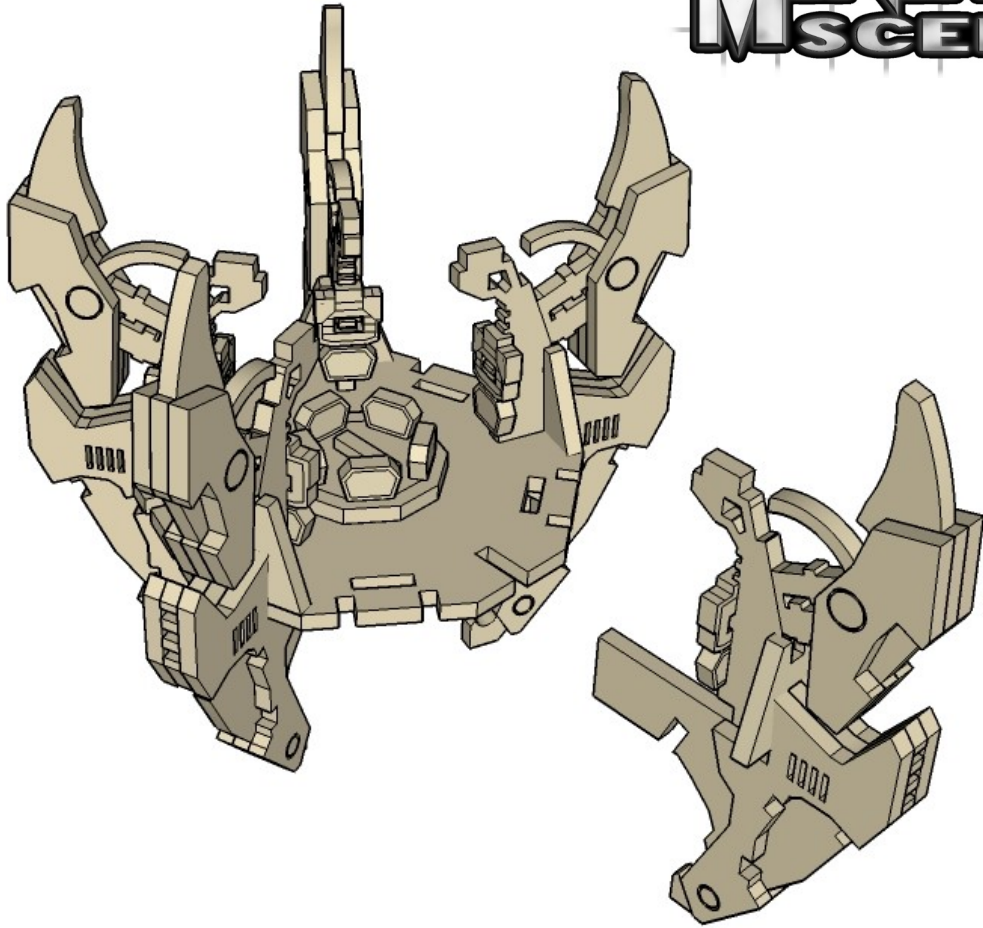


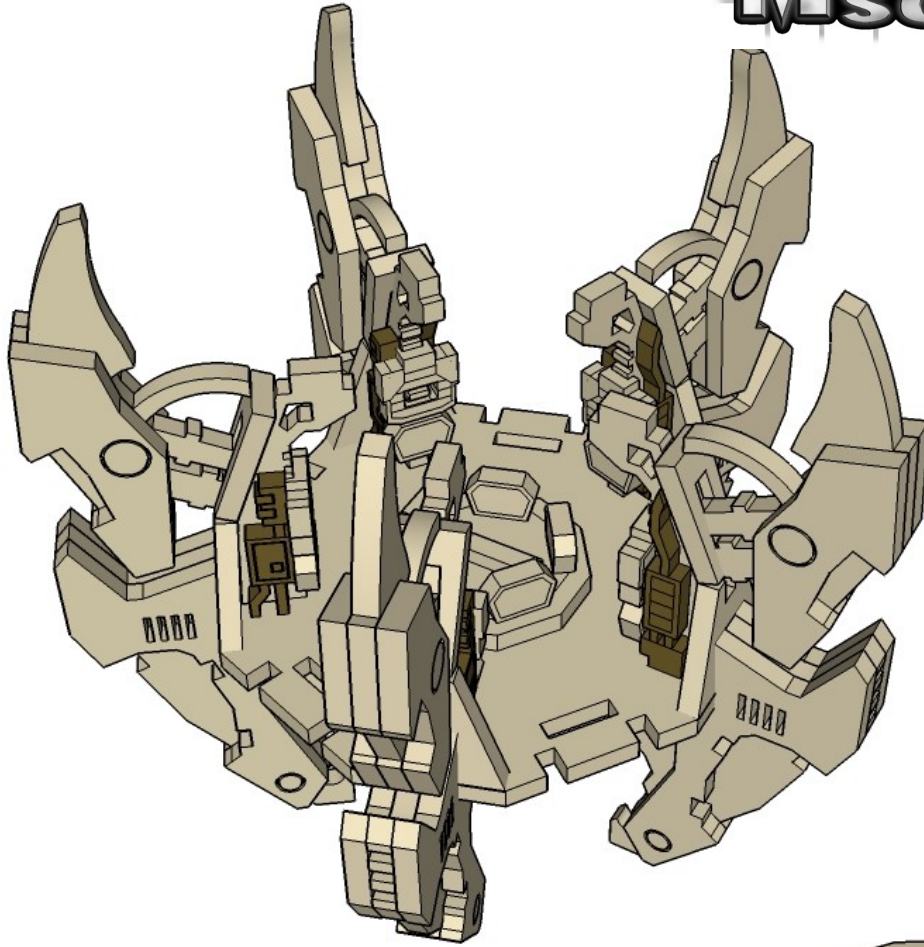
NOTE:
If you do not intend to finish
your model with the doors
open, the interior parts in-
dicated by the arrows are
not required.



CNC WORKSHOP

MINIATURE SCENERY



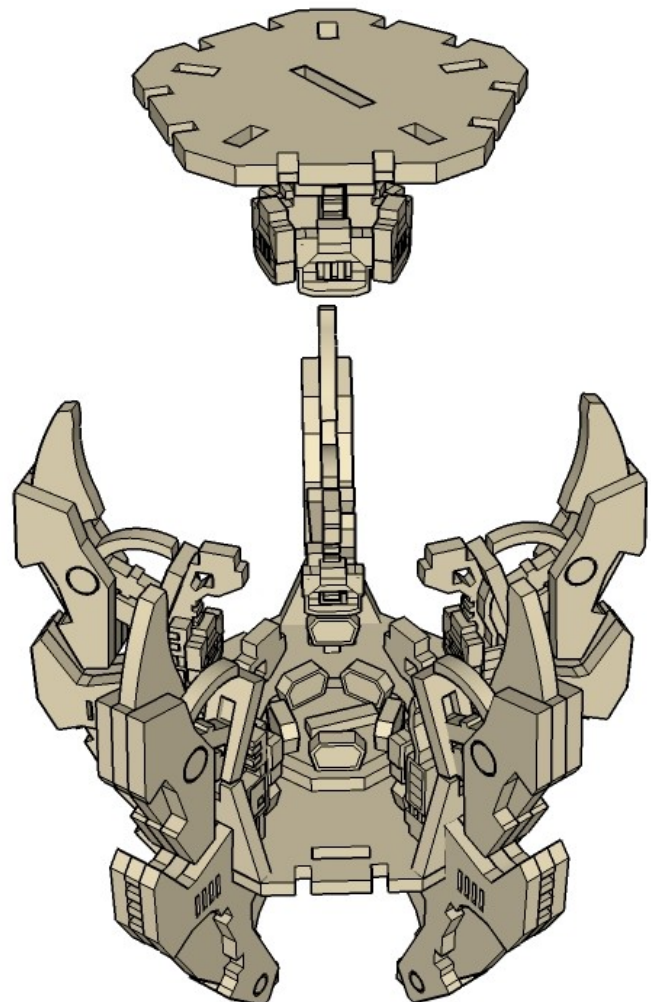
**NOTE:**

If you do not intend to finish your model with the doors open, the interior parts shown on this step are not required.

NOTE:

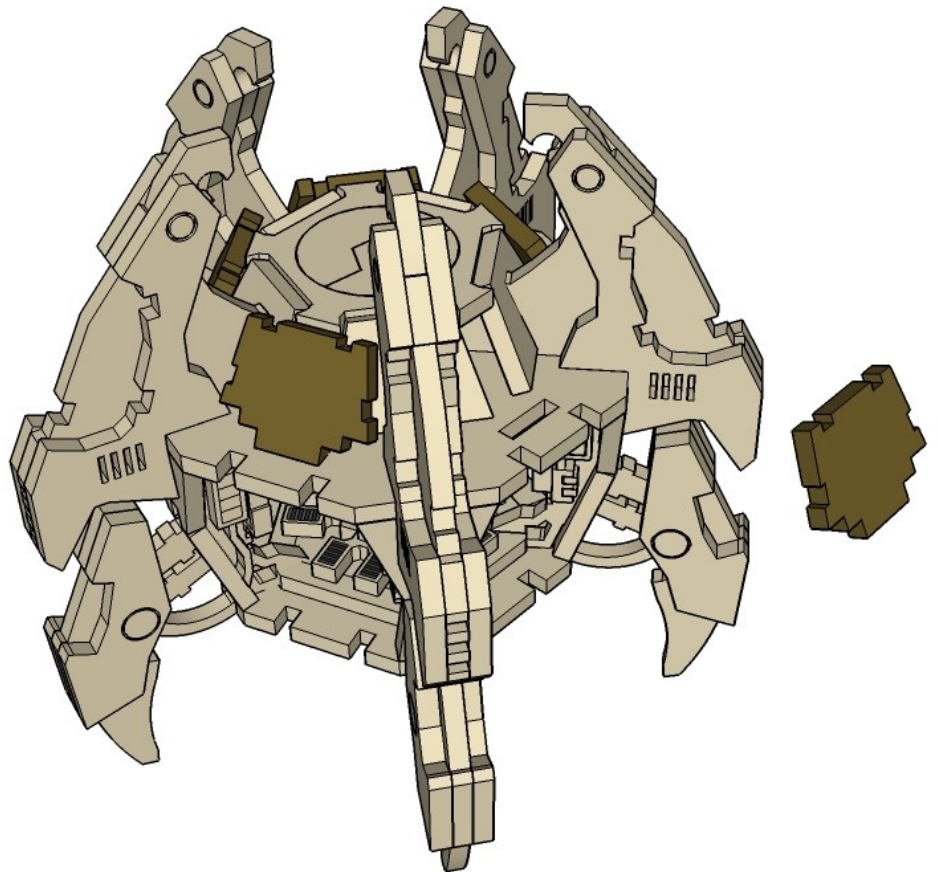
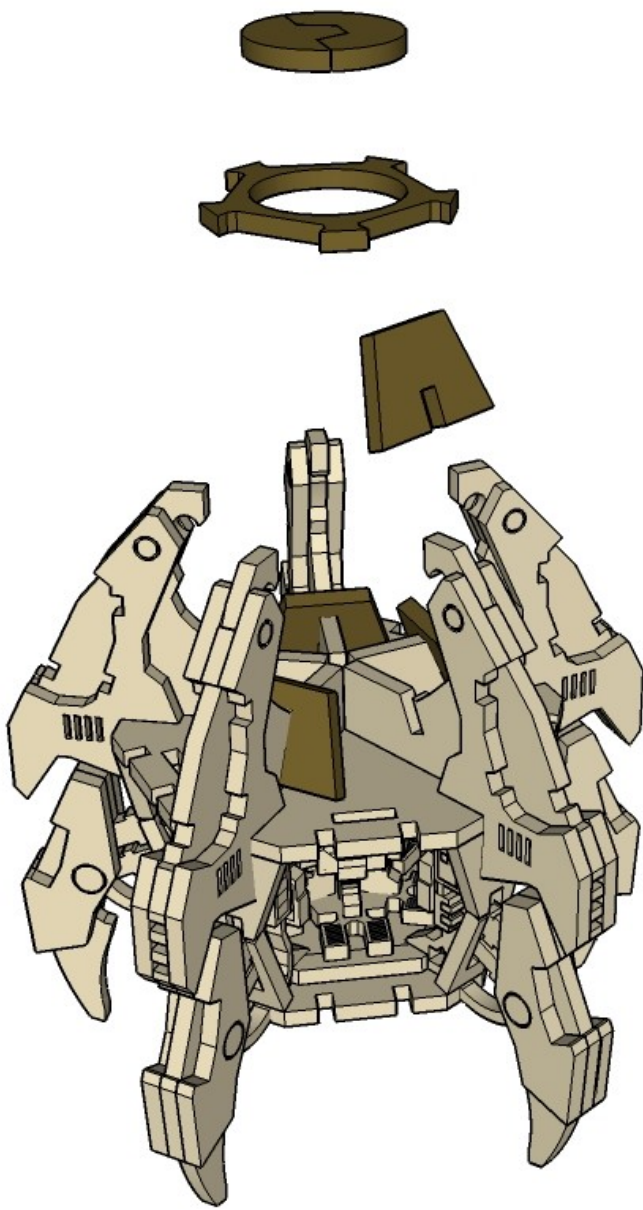
This bit is a bit tricky. You'll need to line up all five of the tabs and slots at once.

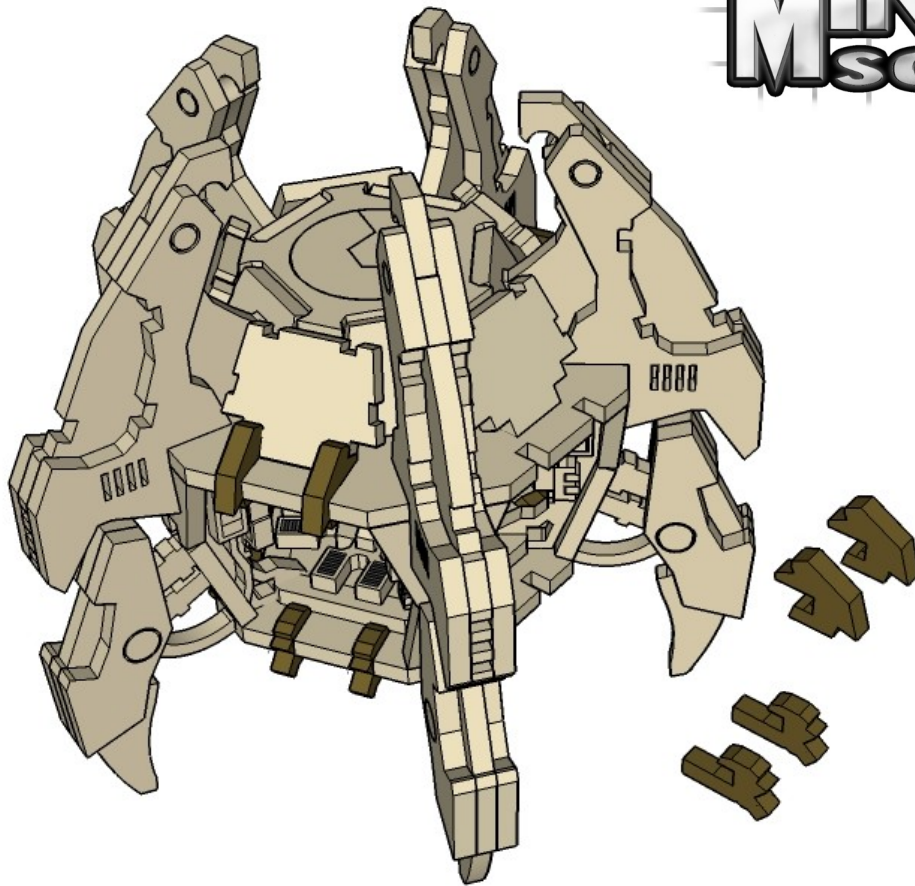
Having pre prepared swear words is recommended.



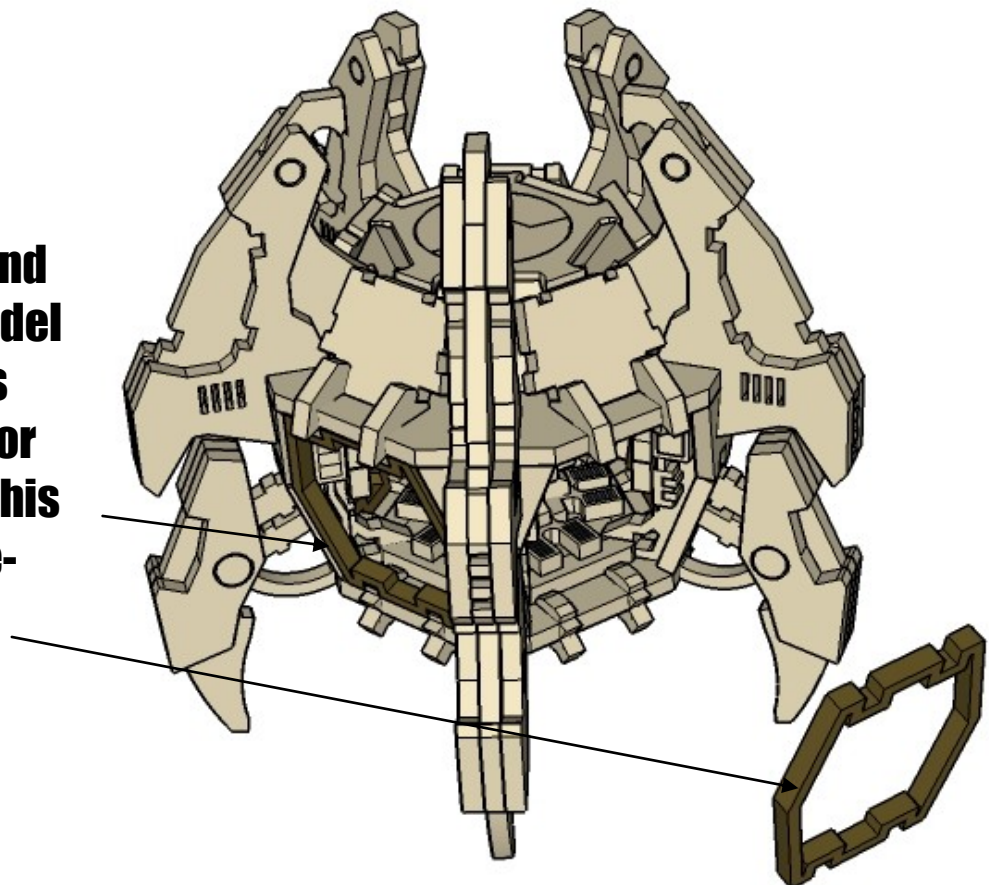
CNC WORKSHOP

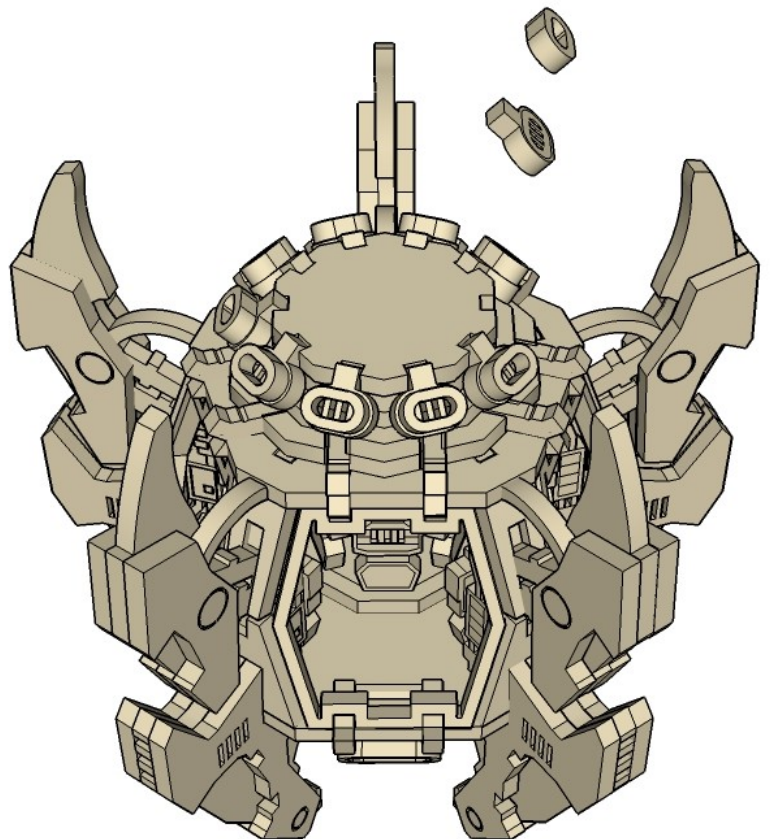
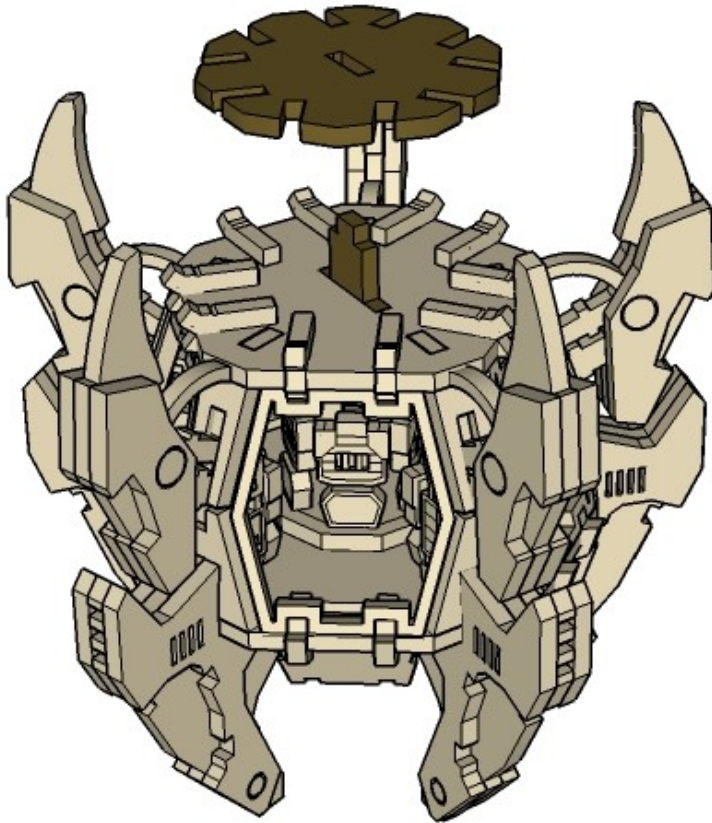
MINIATURE SCENERY

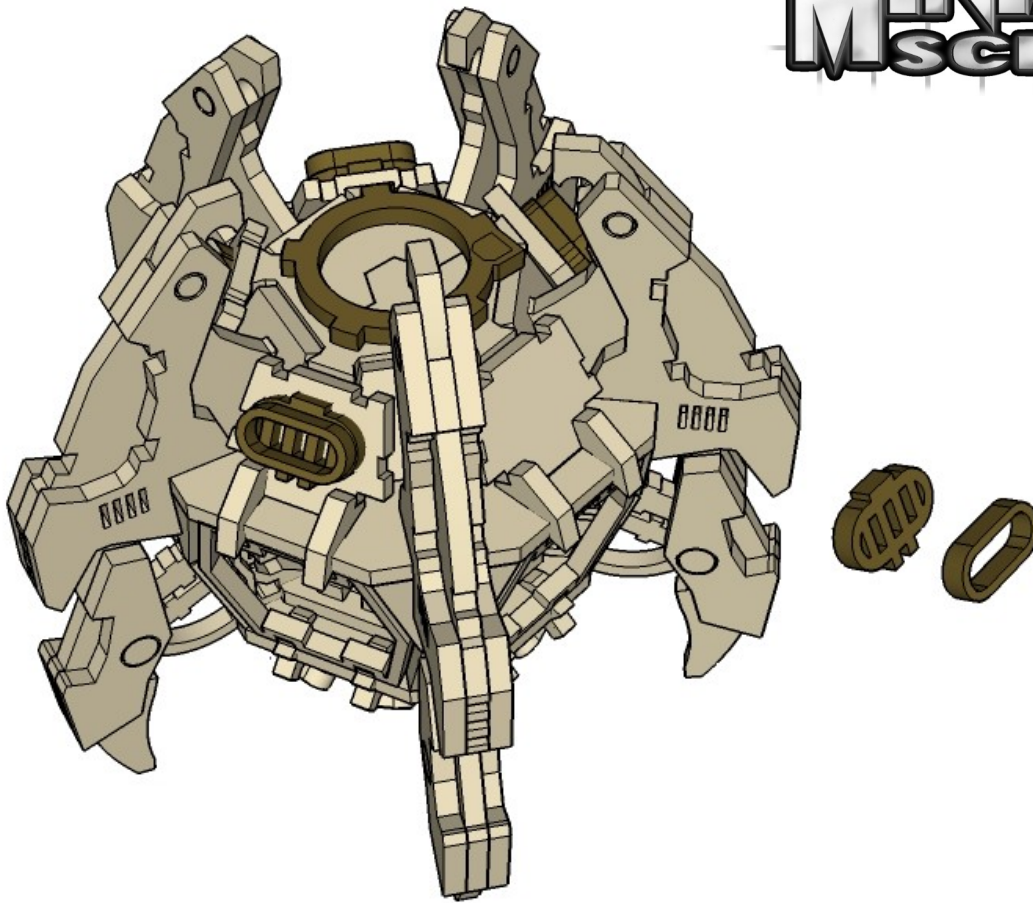




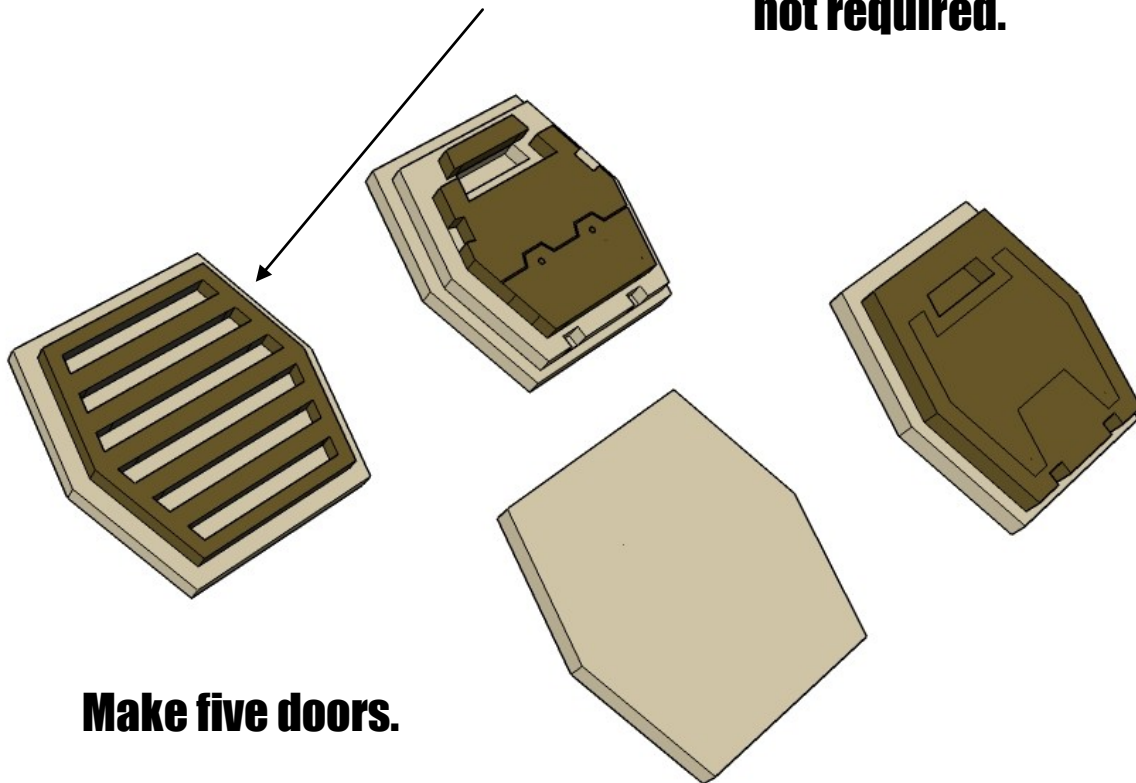
NOTE:
If you do not intend
to finish your model
with the doors
open, the interior
parts shown on this
step are not re-
quired.





**NOTE:**

If you do not intend to finish your model with the doors open, the grill parts shown on this step are not required.



Make five doors.

CNC WORKSHOP

MINIATURE SCENERY

