

MINIATURE SCENERY

INSTRUCTIONS ORKSTEADY

PREPARATION

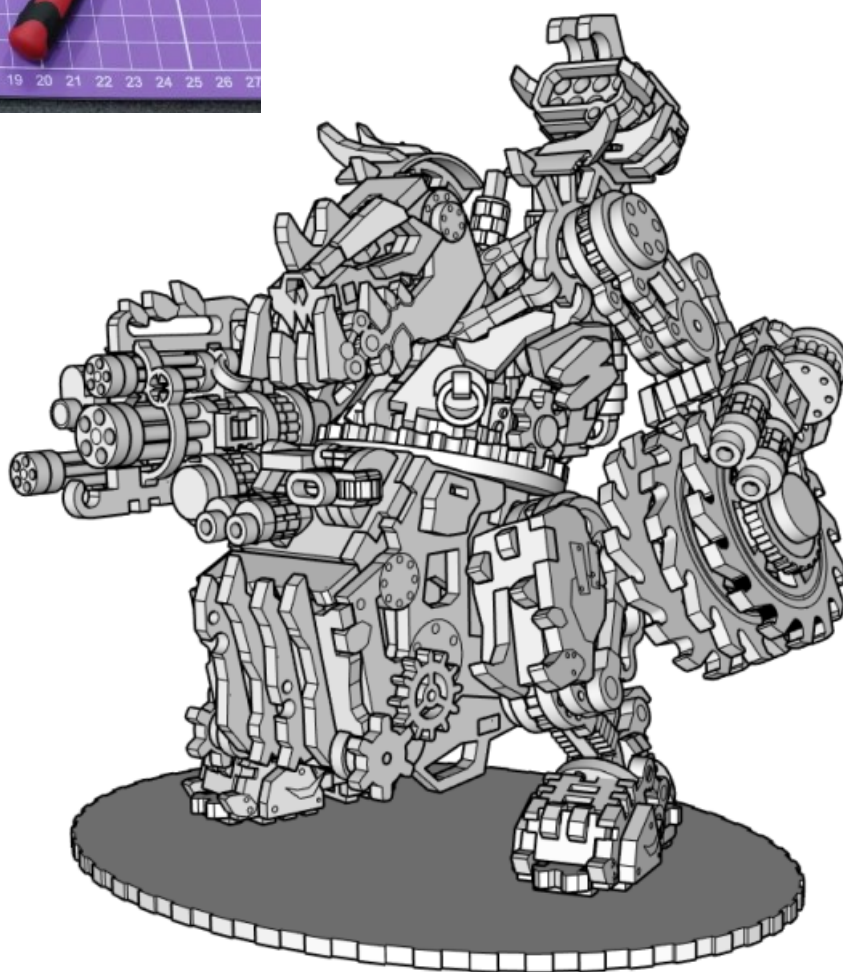
You will need:

- Cutting mat or something to protect your table.
- PVA/Wood glue or superglue if you prefer.
- Small file or sand paper.
- Small blade / hobby knife



GENERAL PROCESS

- Clear plenty of table space, you will need it.
- Parts should remove easily from the board by pressing through and popping them out. It's a good idea to cut through the tiny joins first though, and some parts (particularly smaller, more detailed parts) may need more careful persuasion.
- Use file or sand paper to remove the small bur caused by the connection to the frame.
- It's a good idea to familiarise yourself with how the pieces fit together before gluing.
- Slot the parts together as shown by the pictures below, applying glue wherever there is a connection. (unless shown otherwise)
- Parts may be a very tight fit, slight trimming or sanding of parts may be needed for ease of assembly.



3D printed parts notes

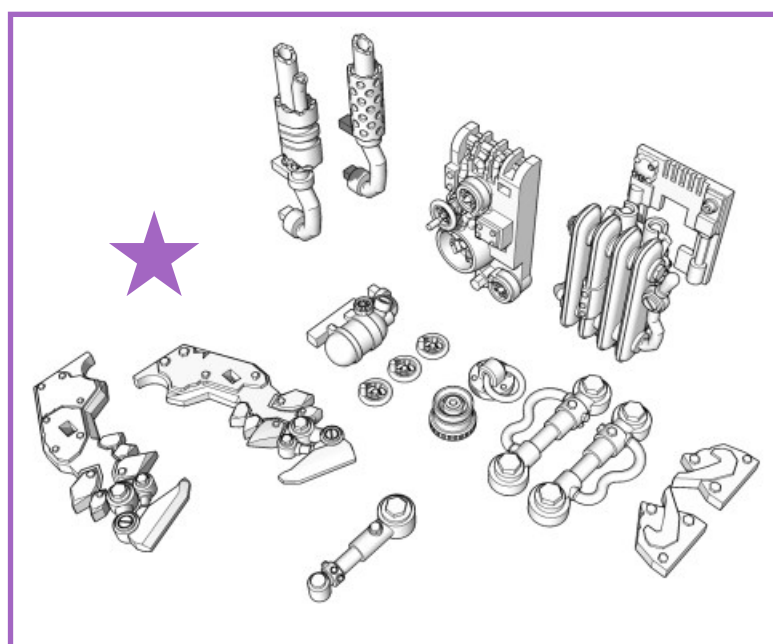
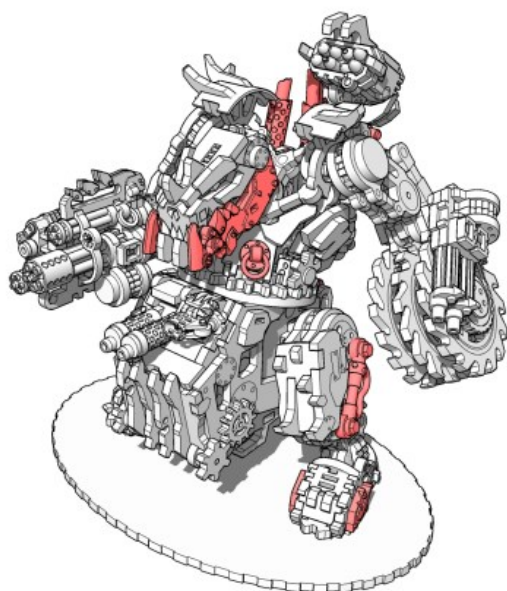
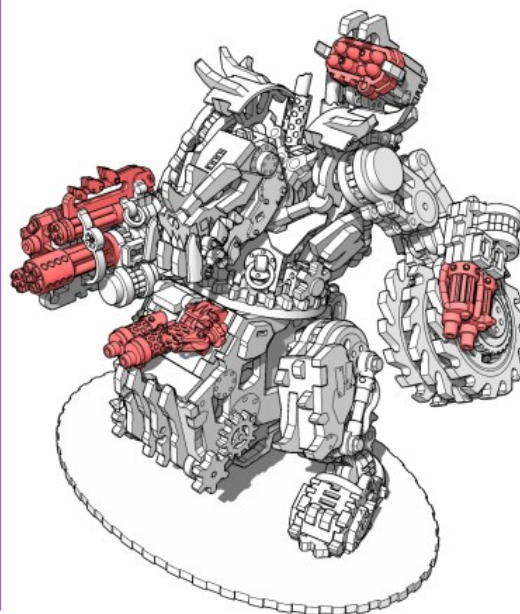
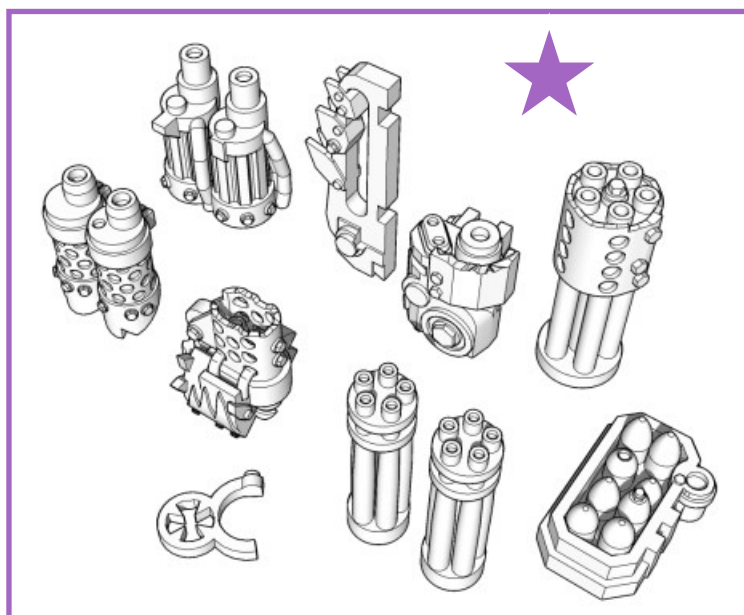
This kit has optional parts that can be 3d printed. The file for these parts can be purchased from www.miniaturescenery.com

These optional parts are designed to fit with the MDF kit at certain points in construction.

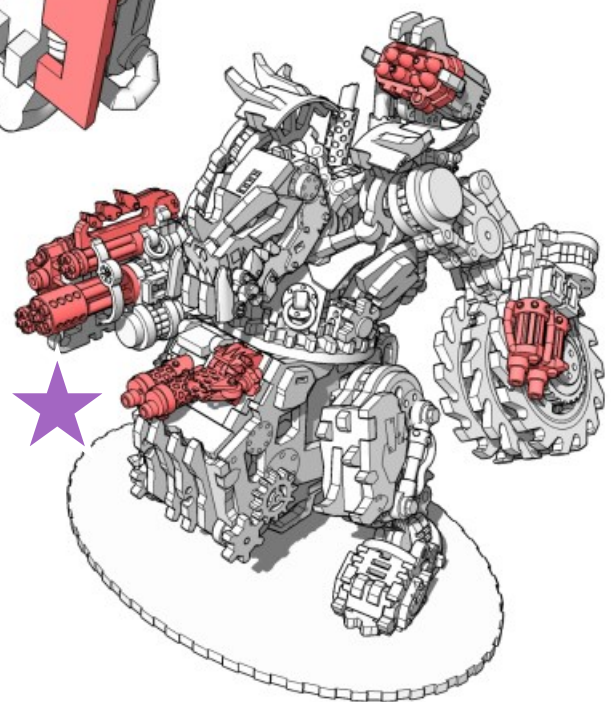
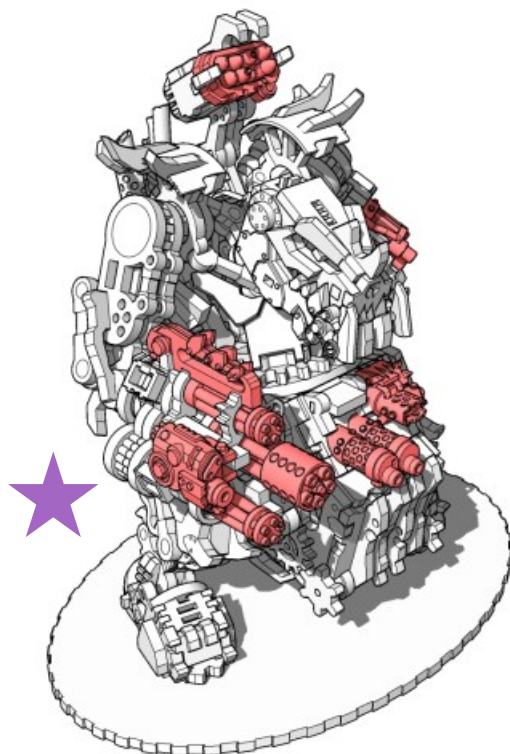
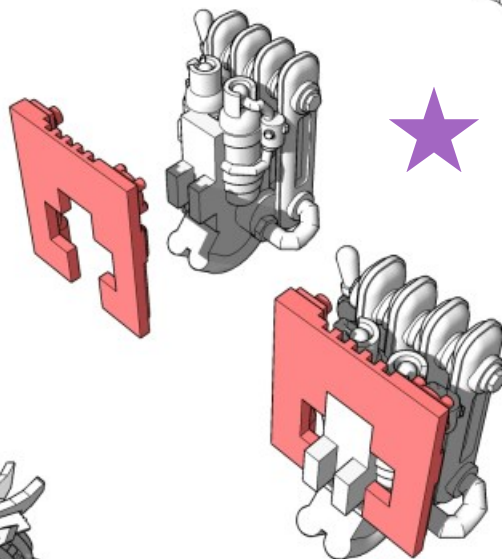
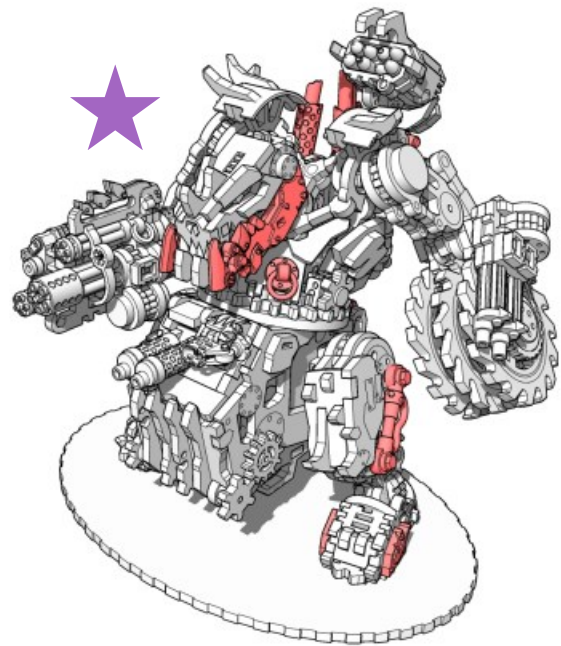
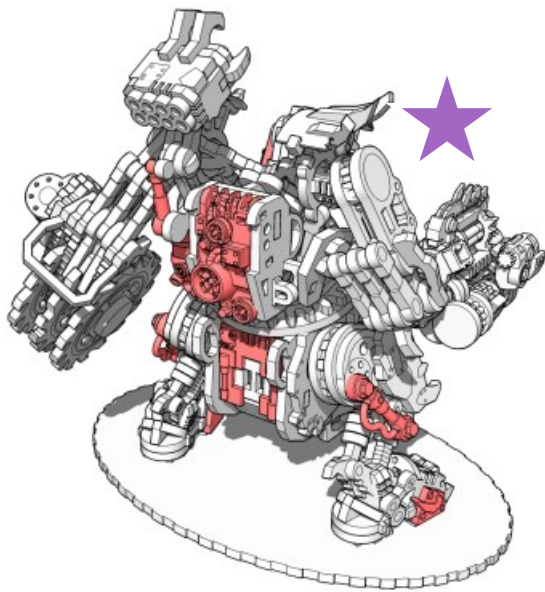
Where a 3D part can be used will be denoted with a

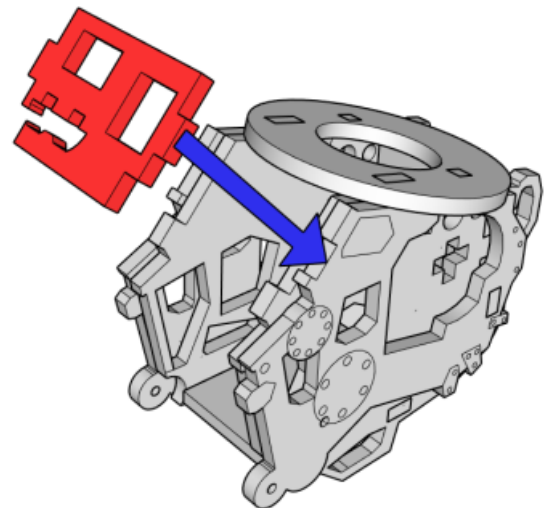
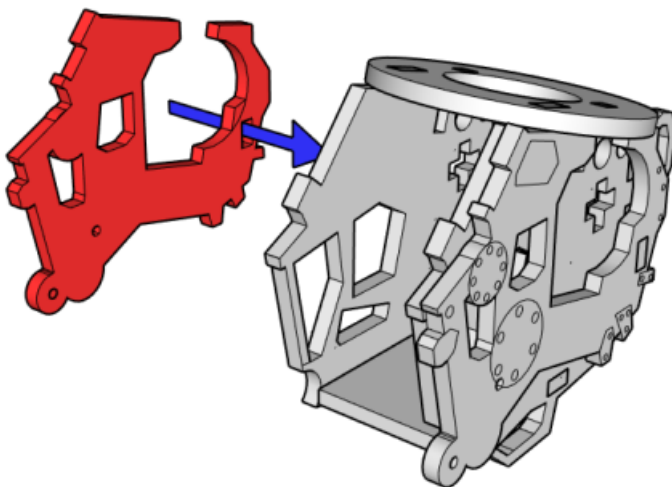
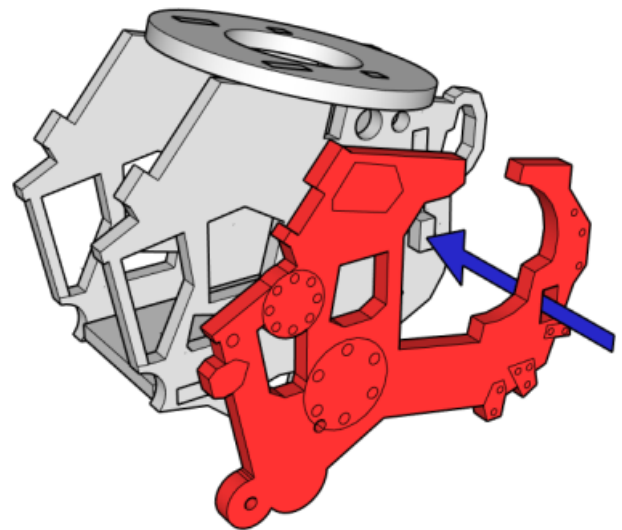
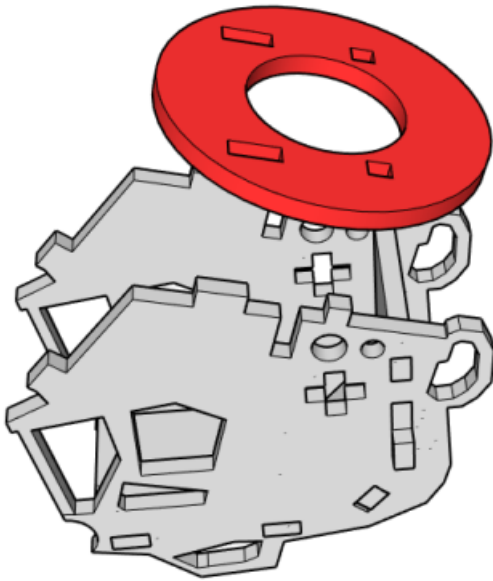
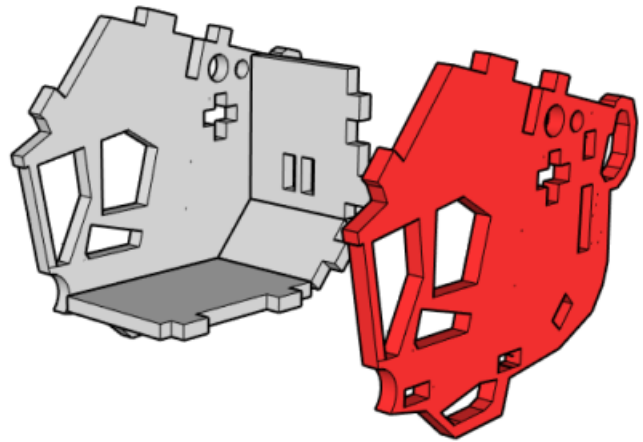
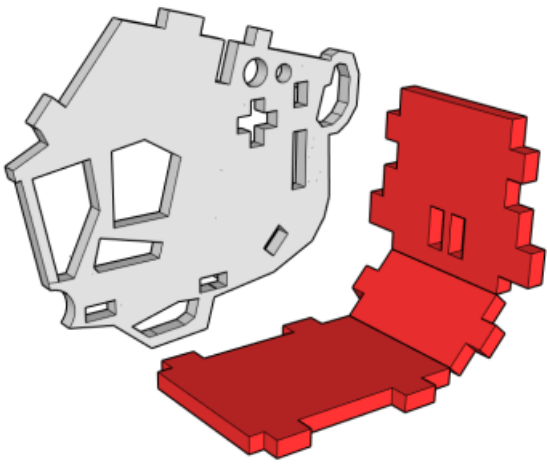


If you are planning to use these parts, please familiarise yourself with the parts below to ensure you do not use the equivalent MDF parts.

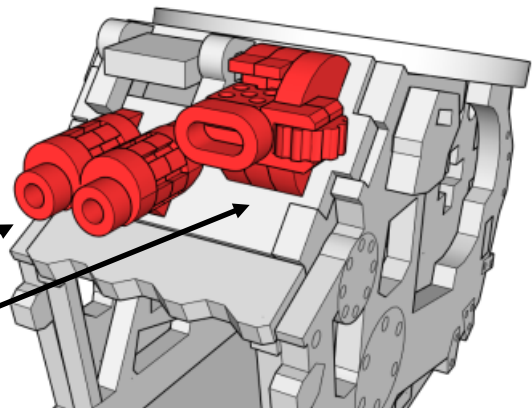
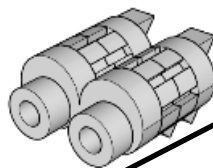
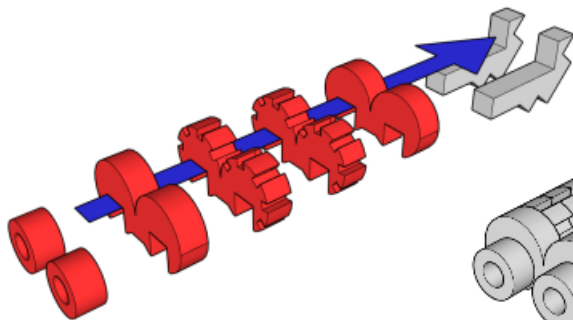
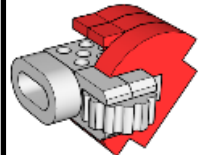
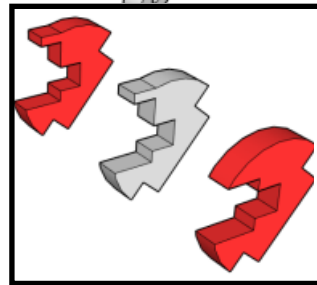
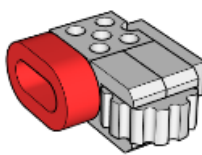
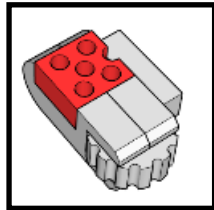
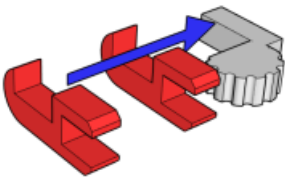
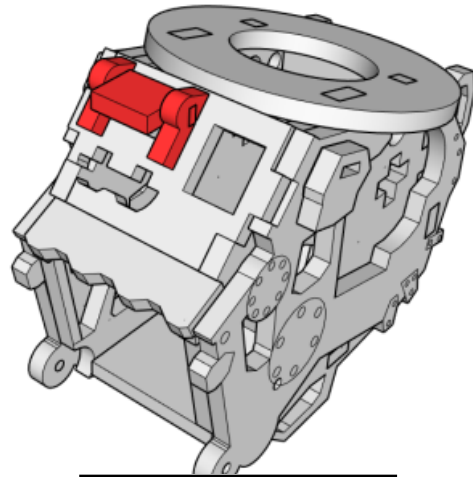
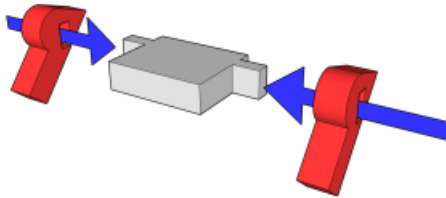
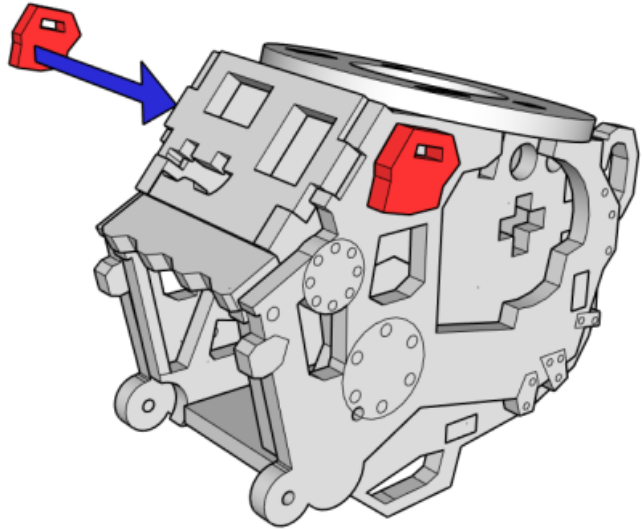
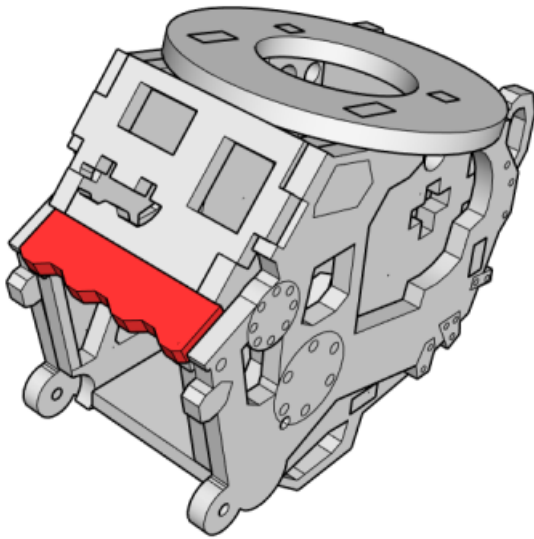


3D printed parts assembly and larger pictures



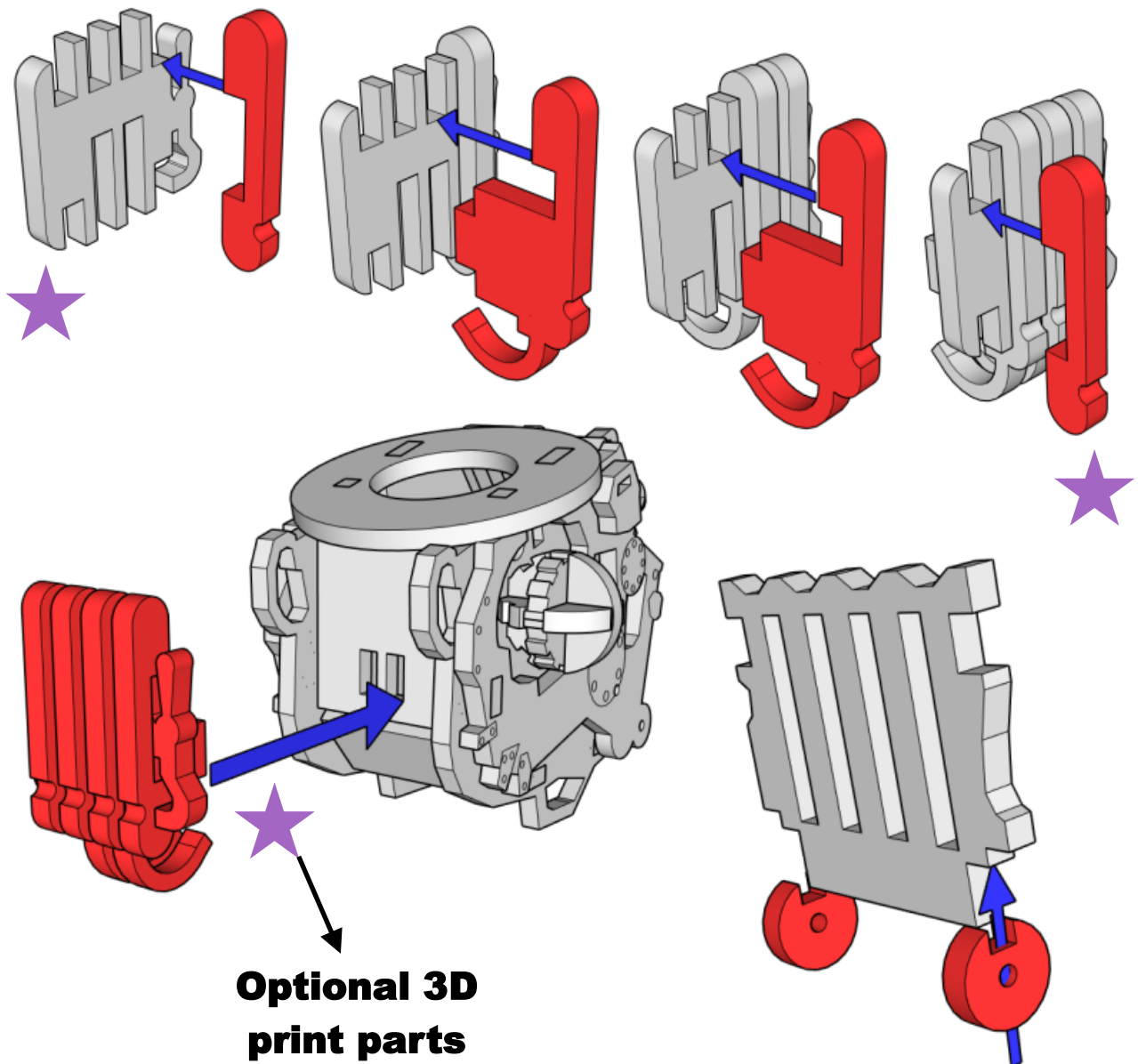
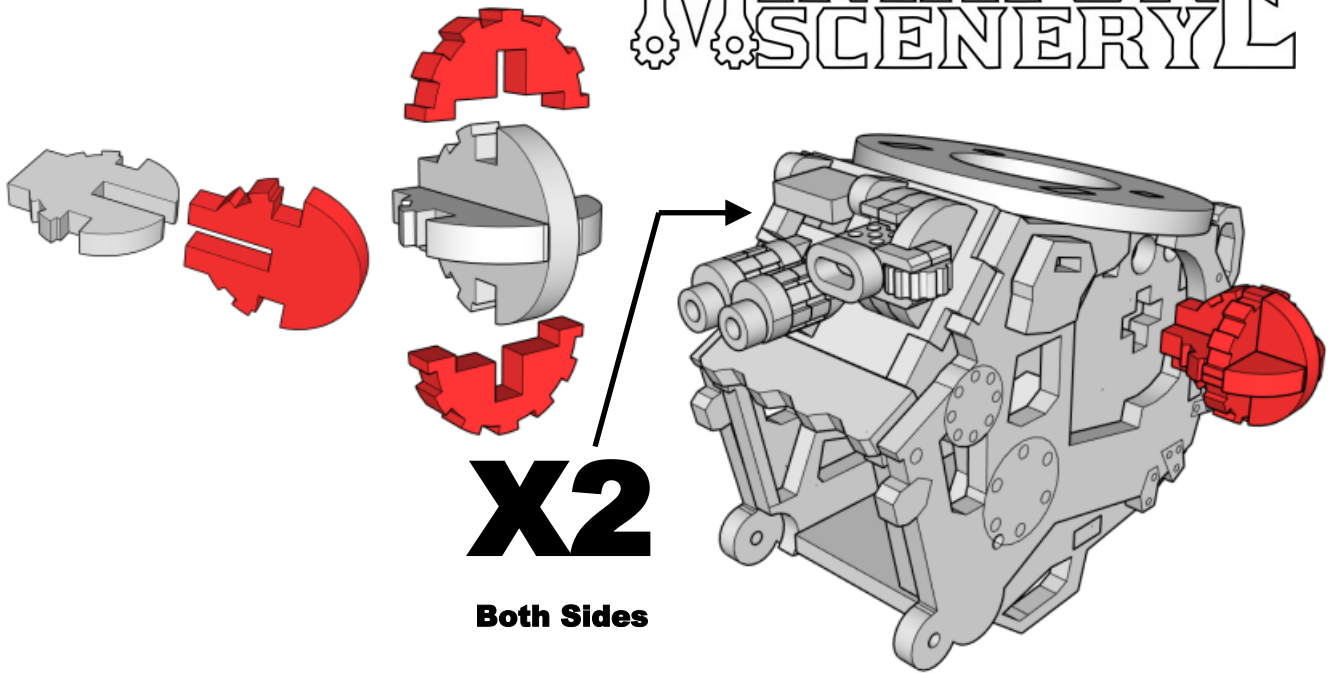


MINIATURE SCENERY

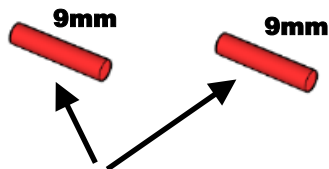
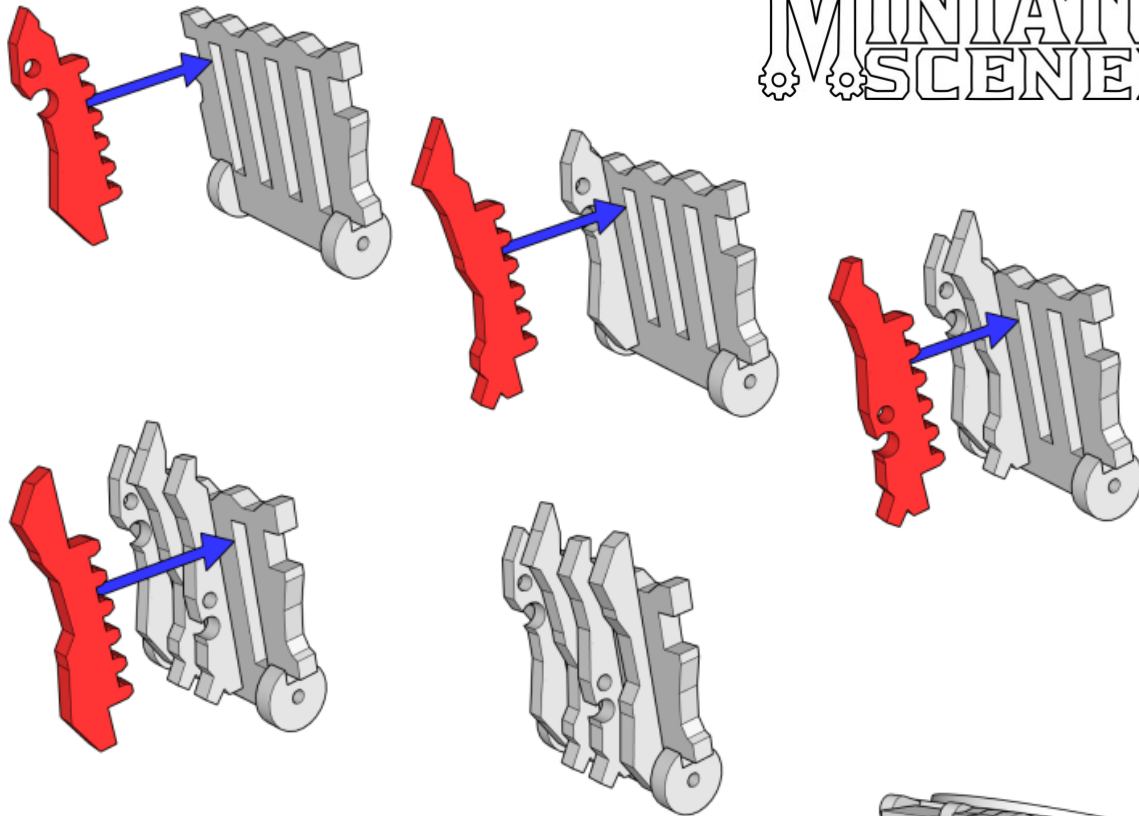


**Optional 3D print files
available for this part** ★

MINIATURE SCENERY

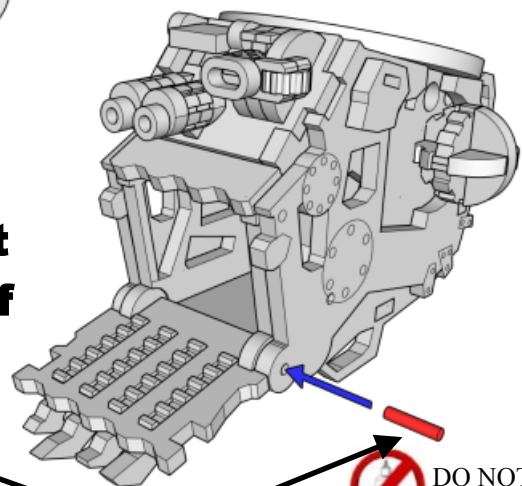


MINIATURE SCENERY

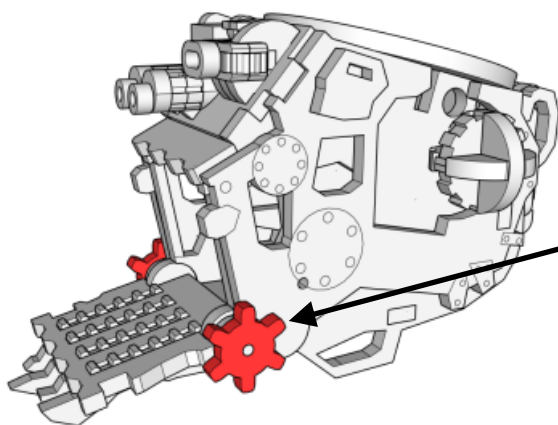


OPTIONAL: To make the front ramp hinge cut two lengths of tooth pick to 9mm length

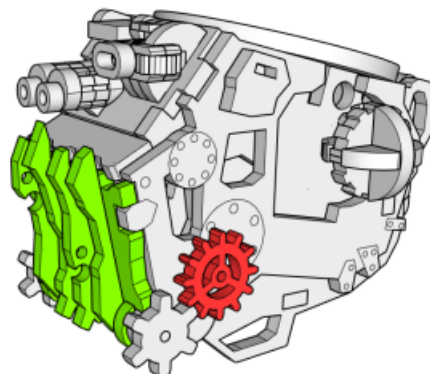
Tooth pick not provided. Hole is 2mm diameter.



**Use cog to glue hinge bolt on outer edge.
(Glue this bit)**



**Or skip all this and
just glue to door shut**

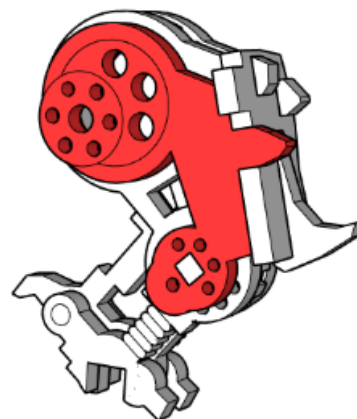
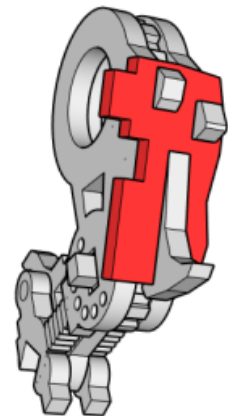
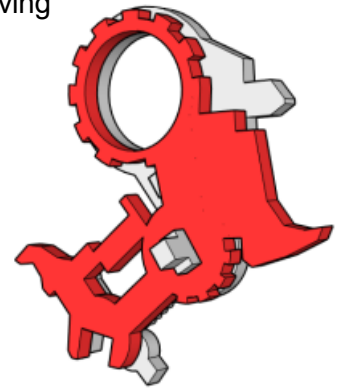
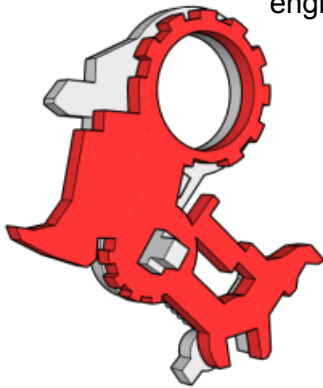
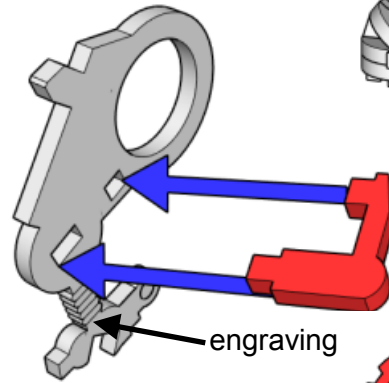
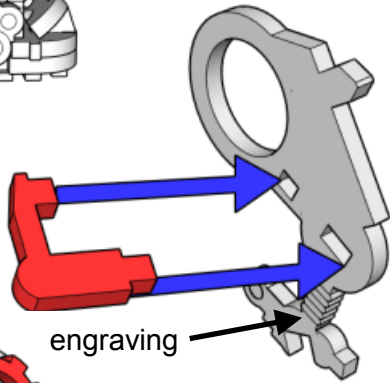
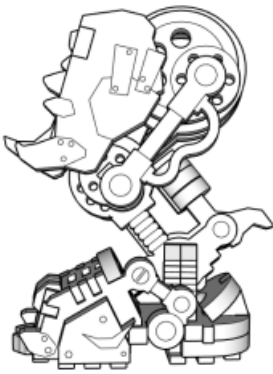


MINIATURE SCENERY

Left

Right

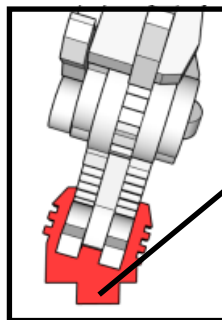
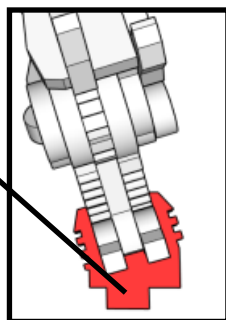
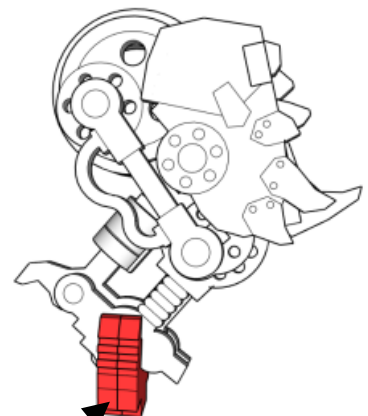
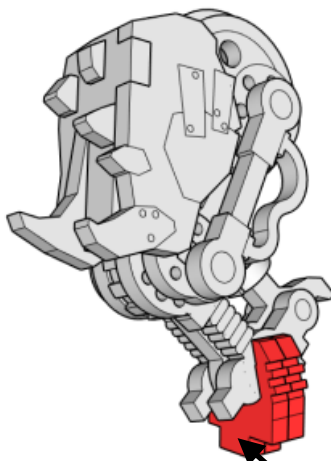
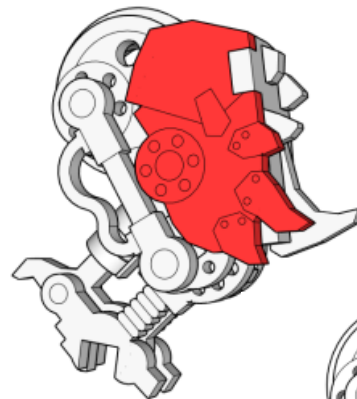
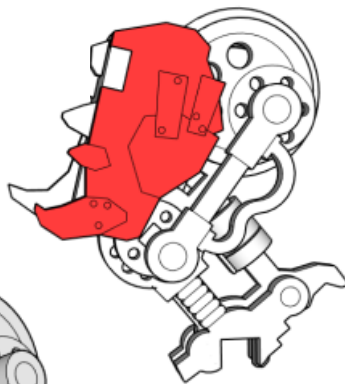
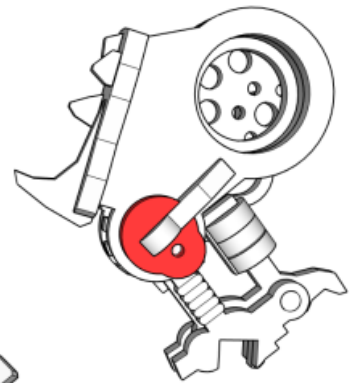
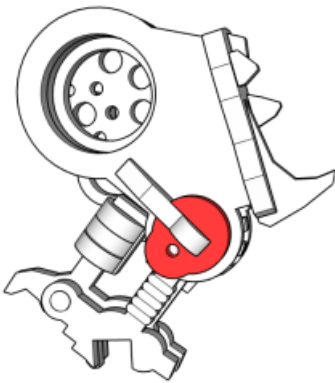
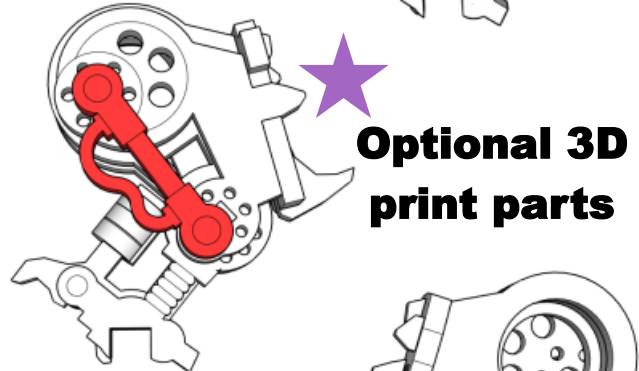
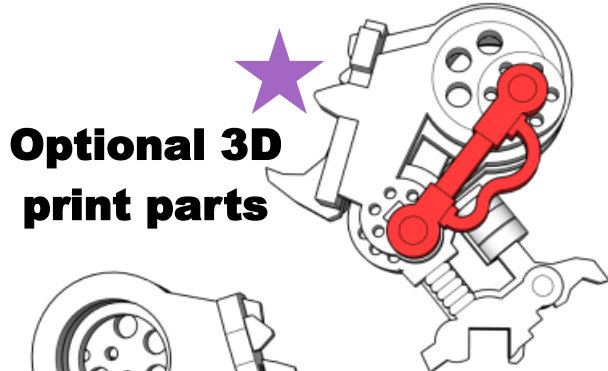
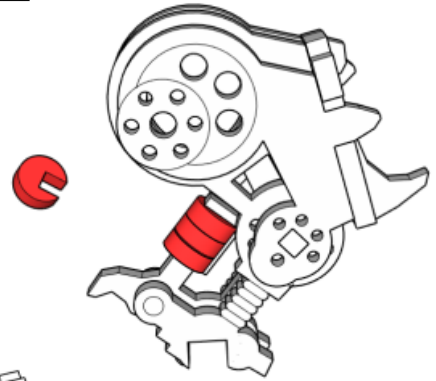
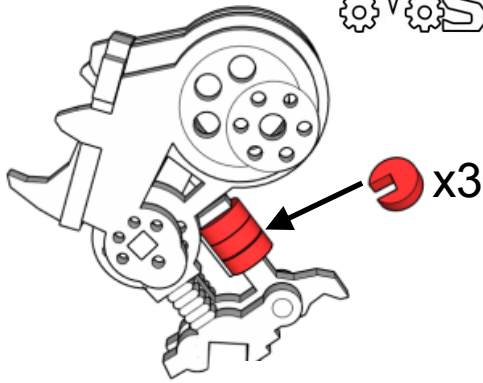
Be sure to make legs as a mirror to each other



MINIATURE SCENERY

Left

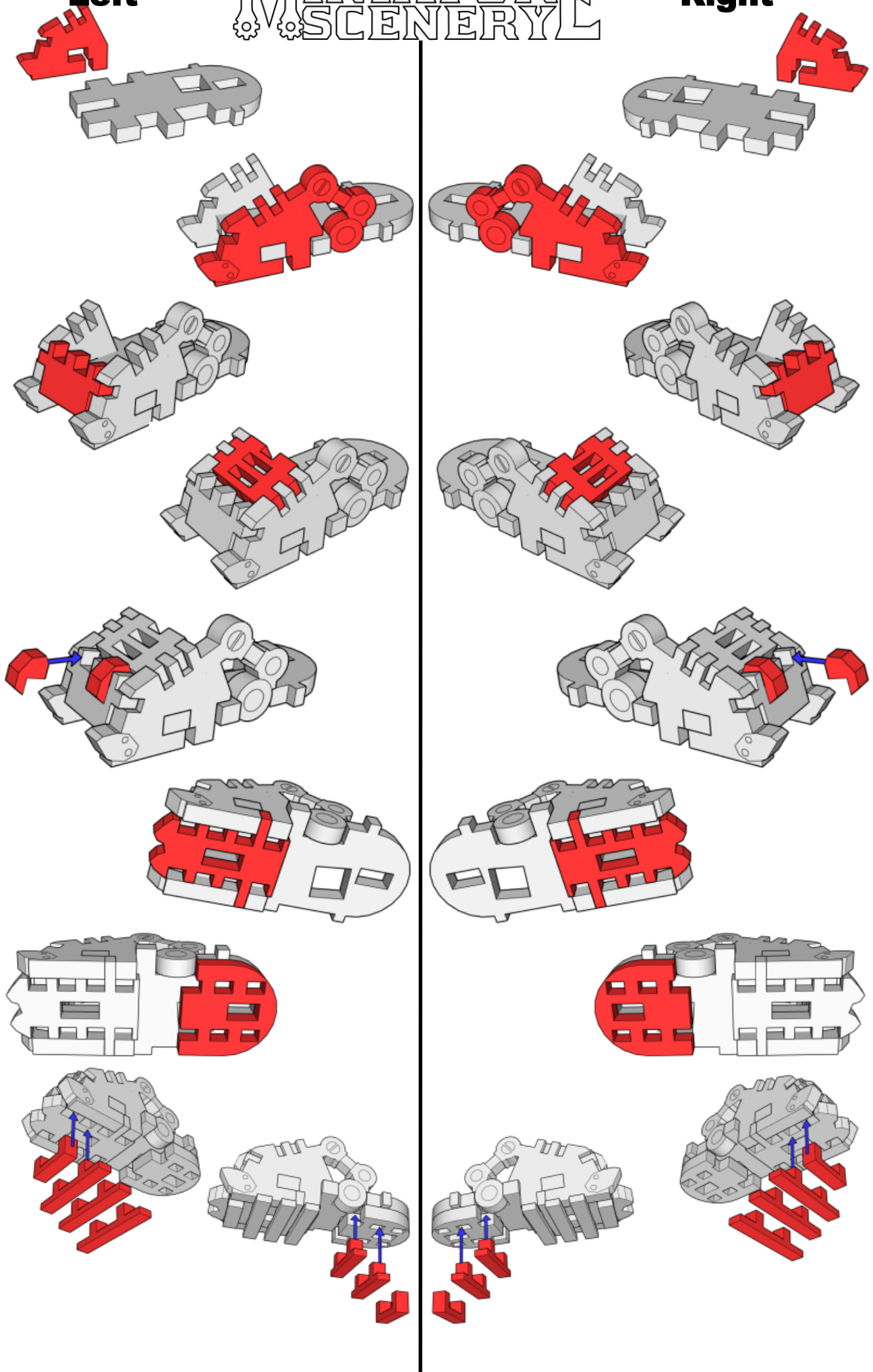
Right



MINIATURE SCENERY

Left

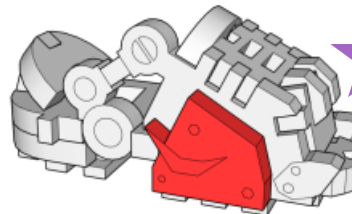
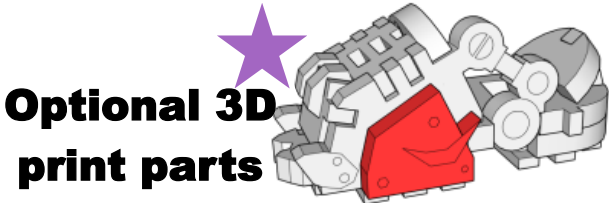
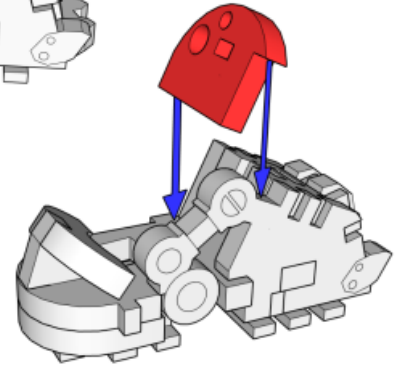
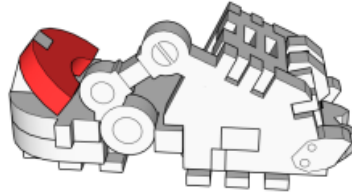
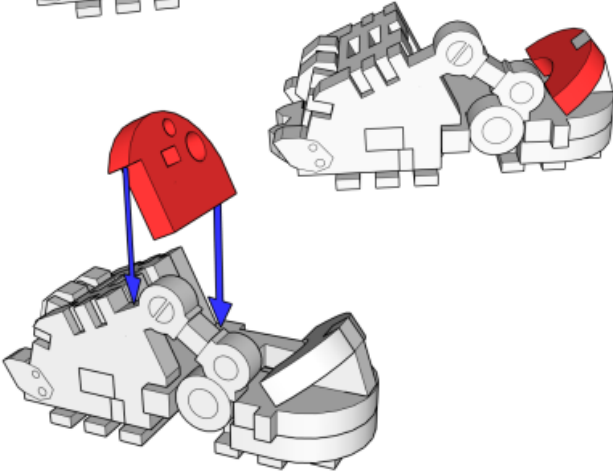
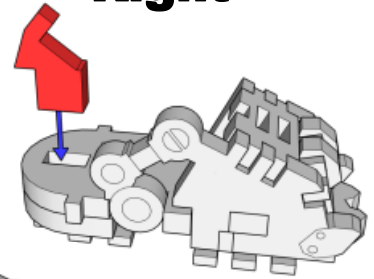
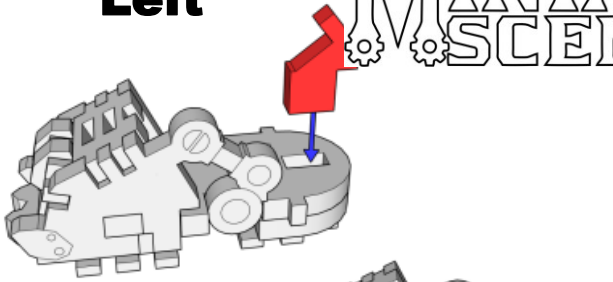
Right



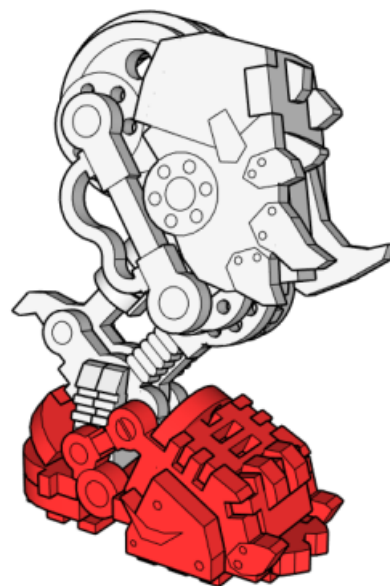
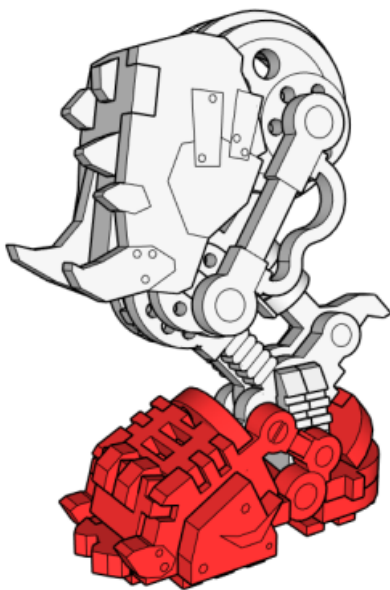
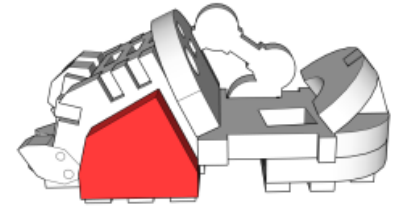
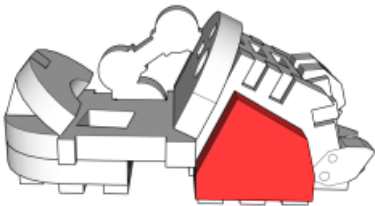
MINIATURE SCENERY

Left

Right

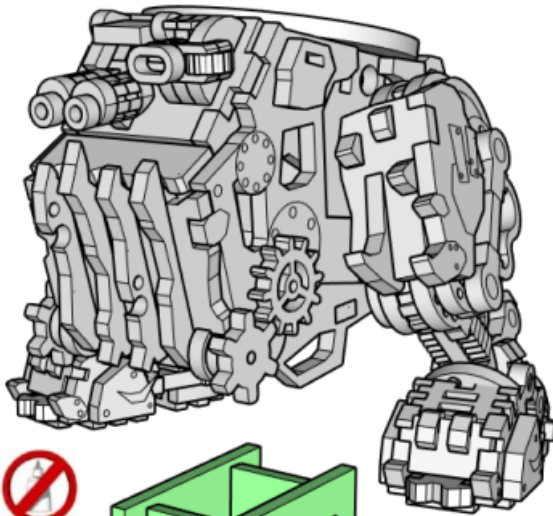
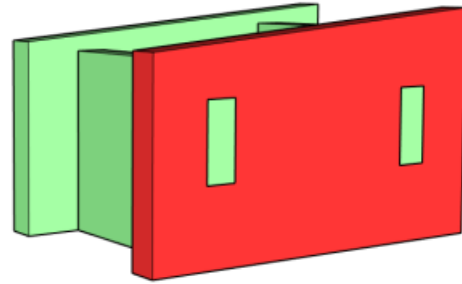
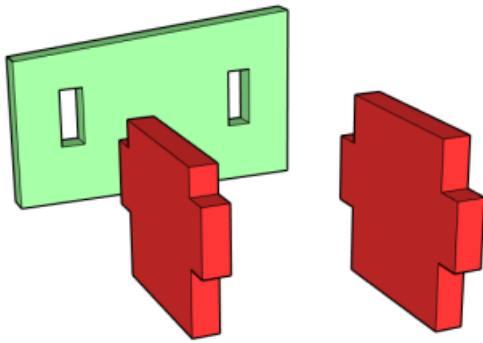


Optional 3D print parts

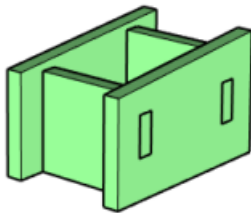


OPTIONAL Belly rest

MINIATURE SCENERY



DO NOT
GLUE



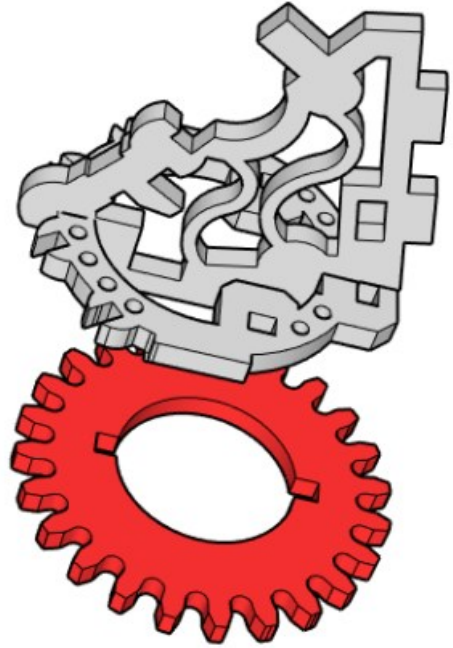
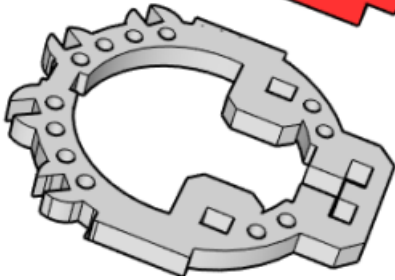
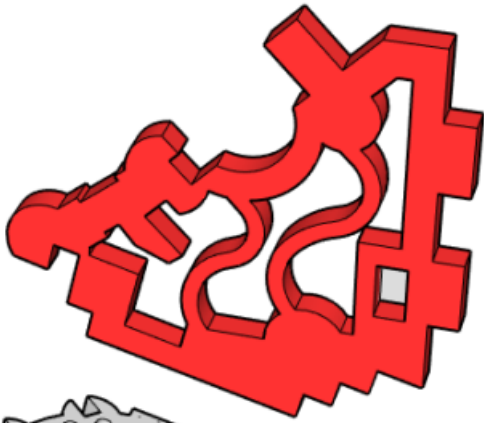
**BELLY Rest is ONLY to
help glue the legs on.**

DO NOT GLUE

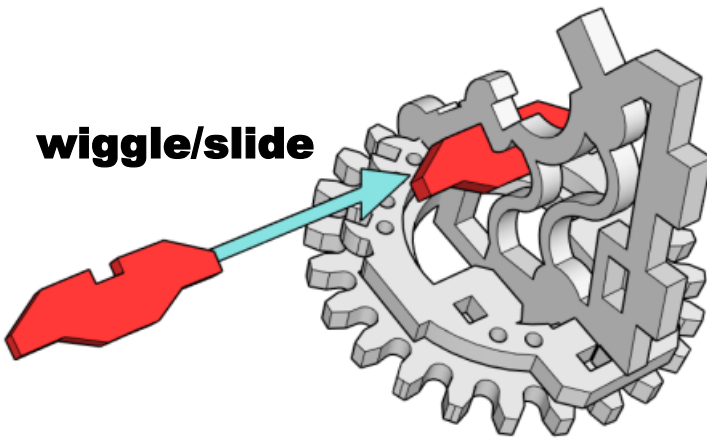
**Remove once Legs are
glued on securely.**

(Slope to front)

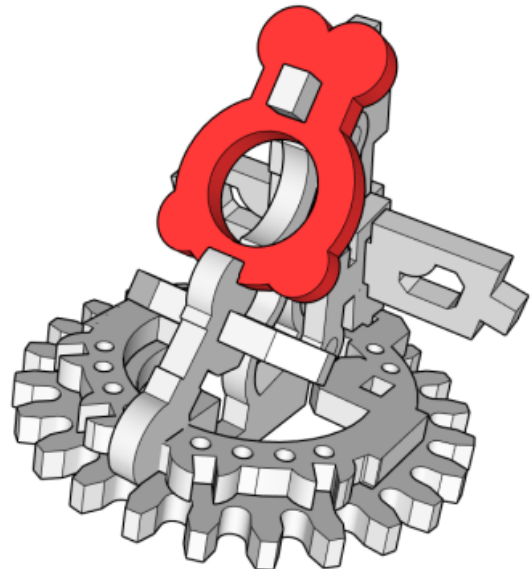
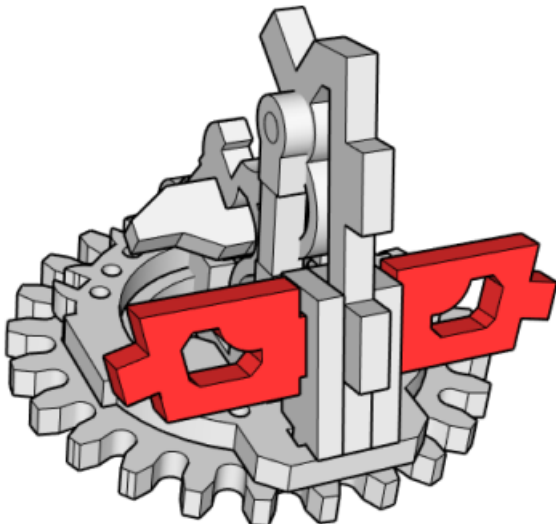
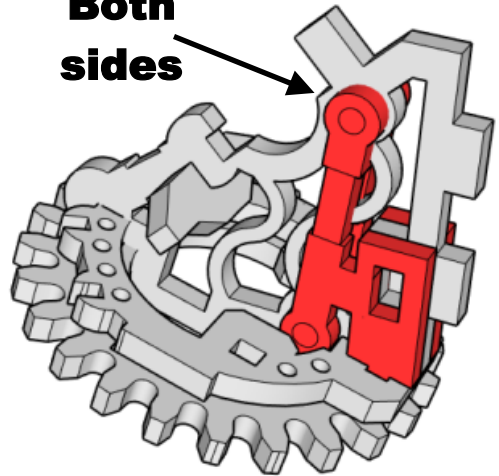
MINIATURE SCENERY



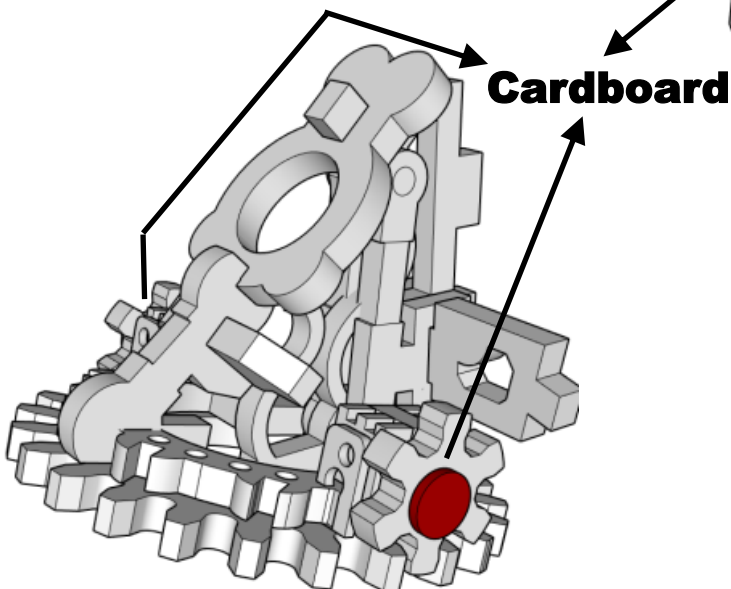
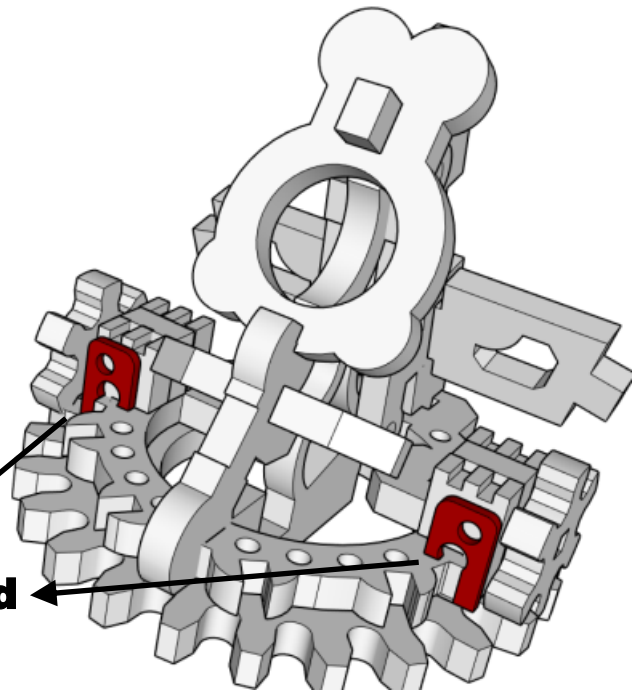
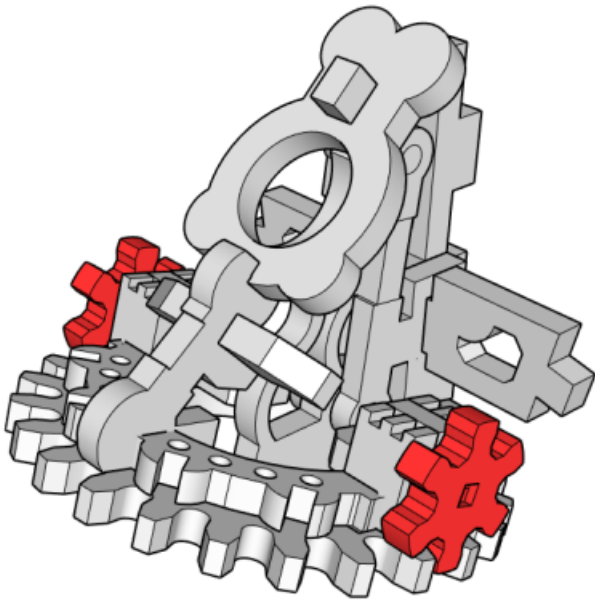
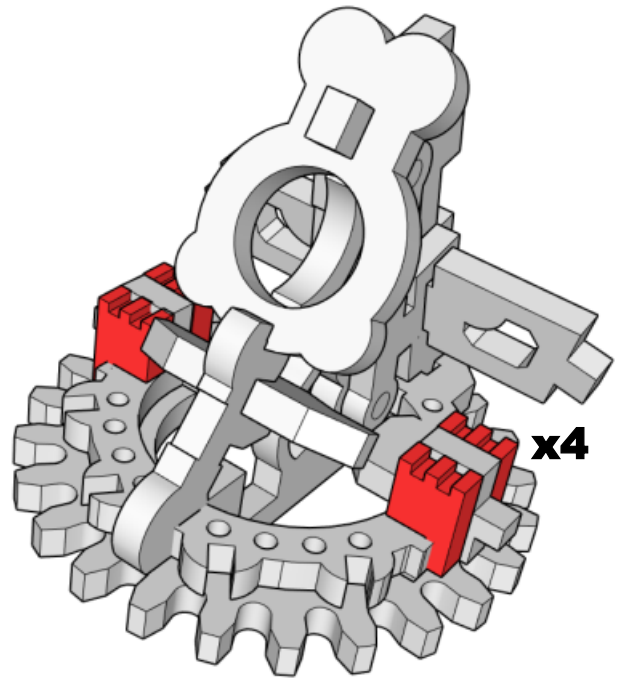
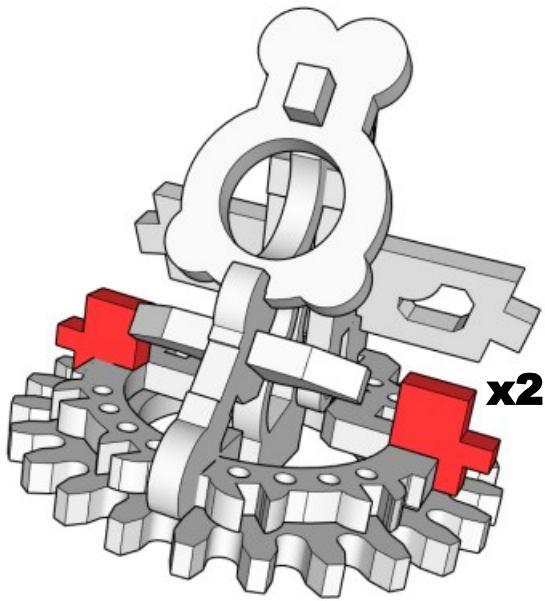
wiggle/slide



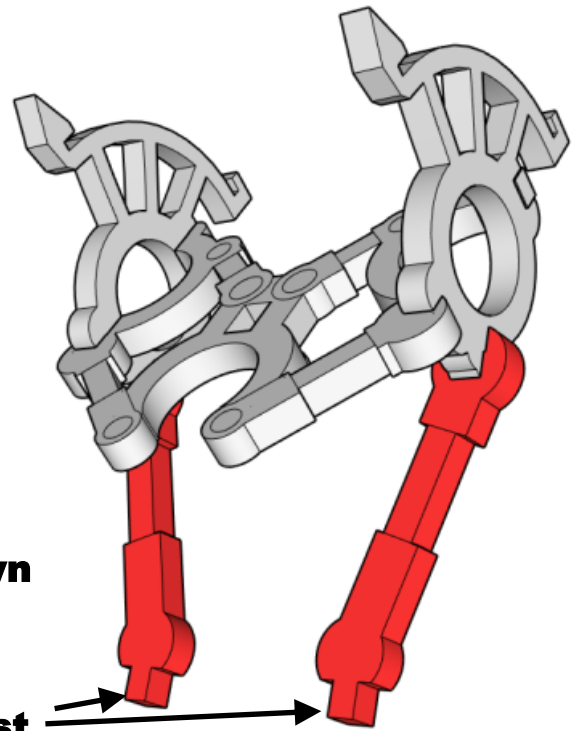
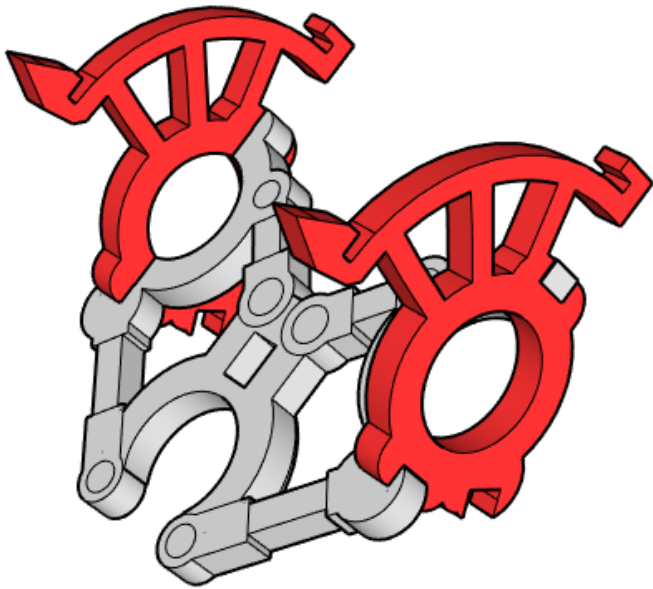
**Both
sides**



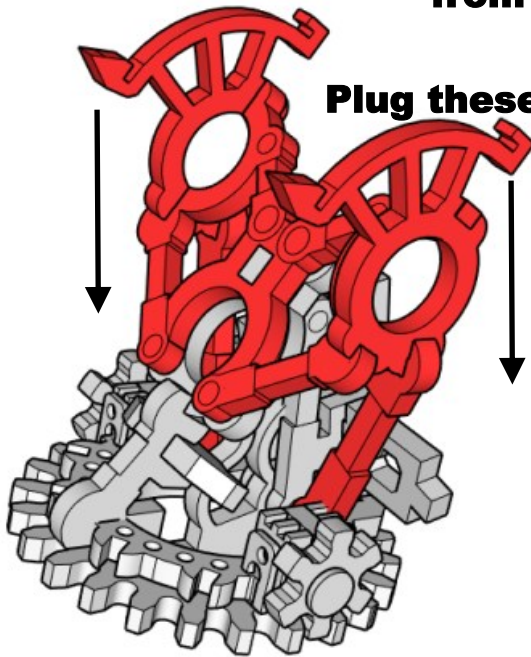
MINIATURE SCENERY



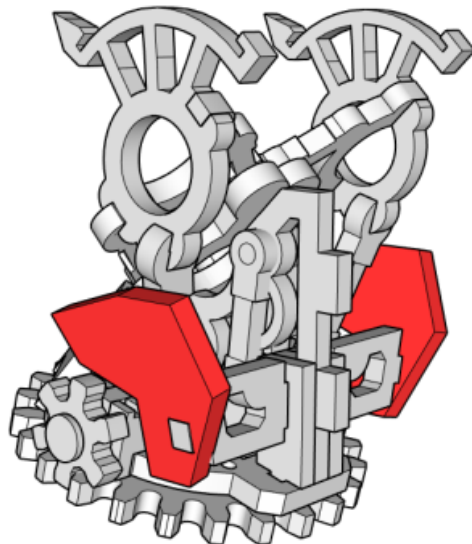
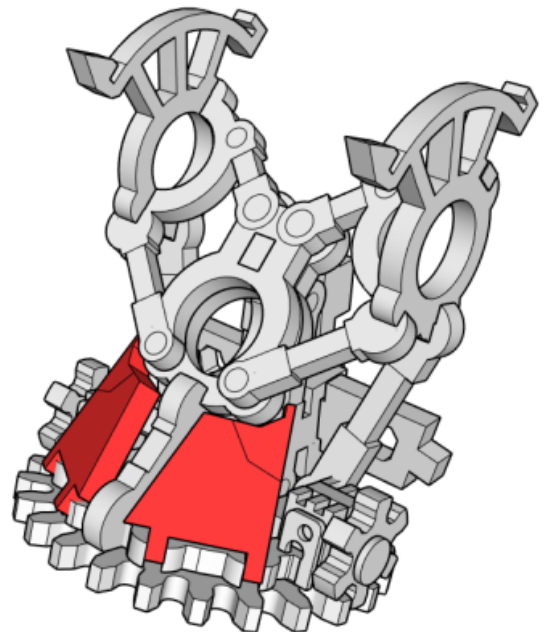
MINIATURE SCENERY

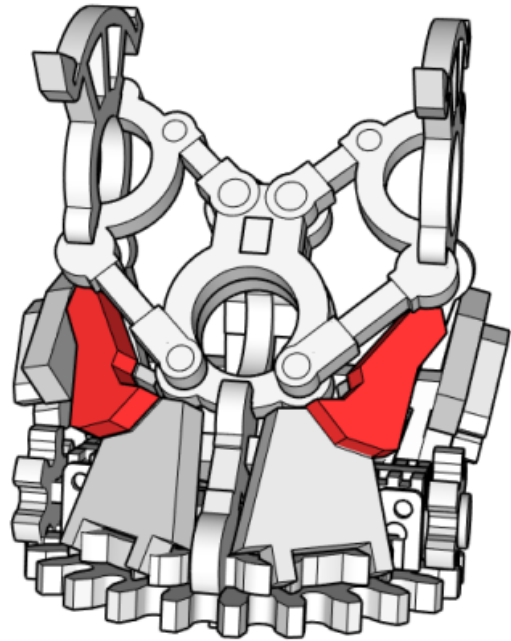
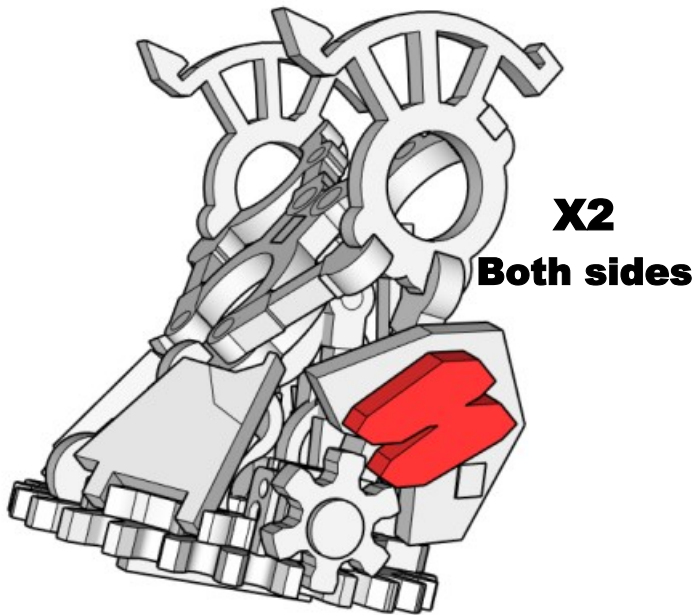


**Lower shoulders down
from above.**

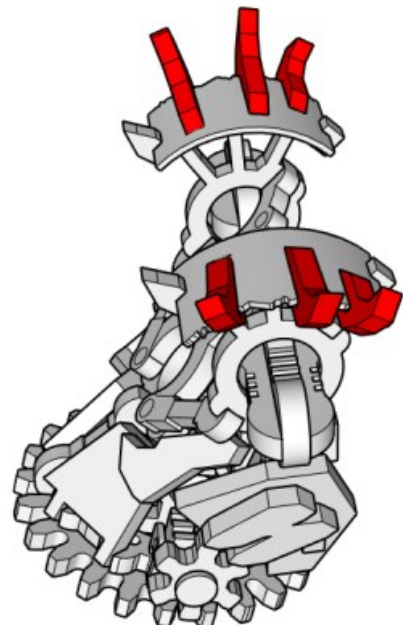
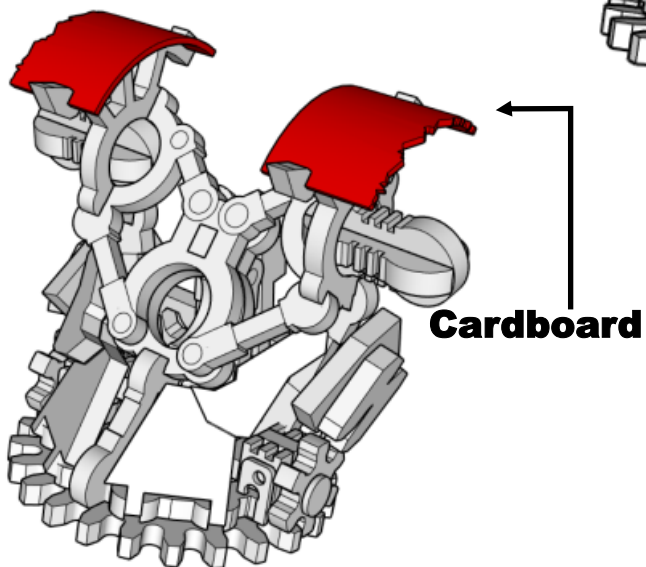
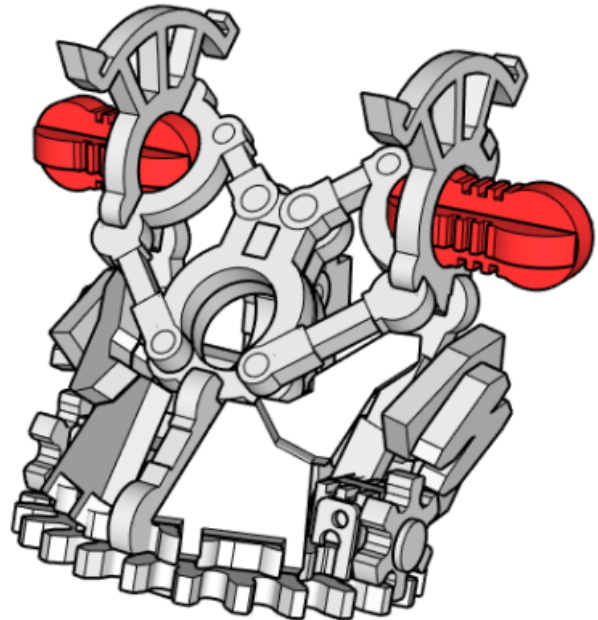


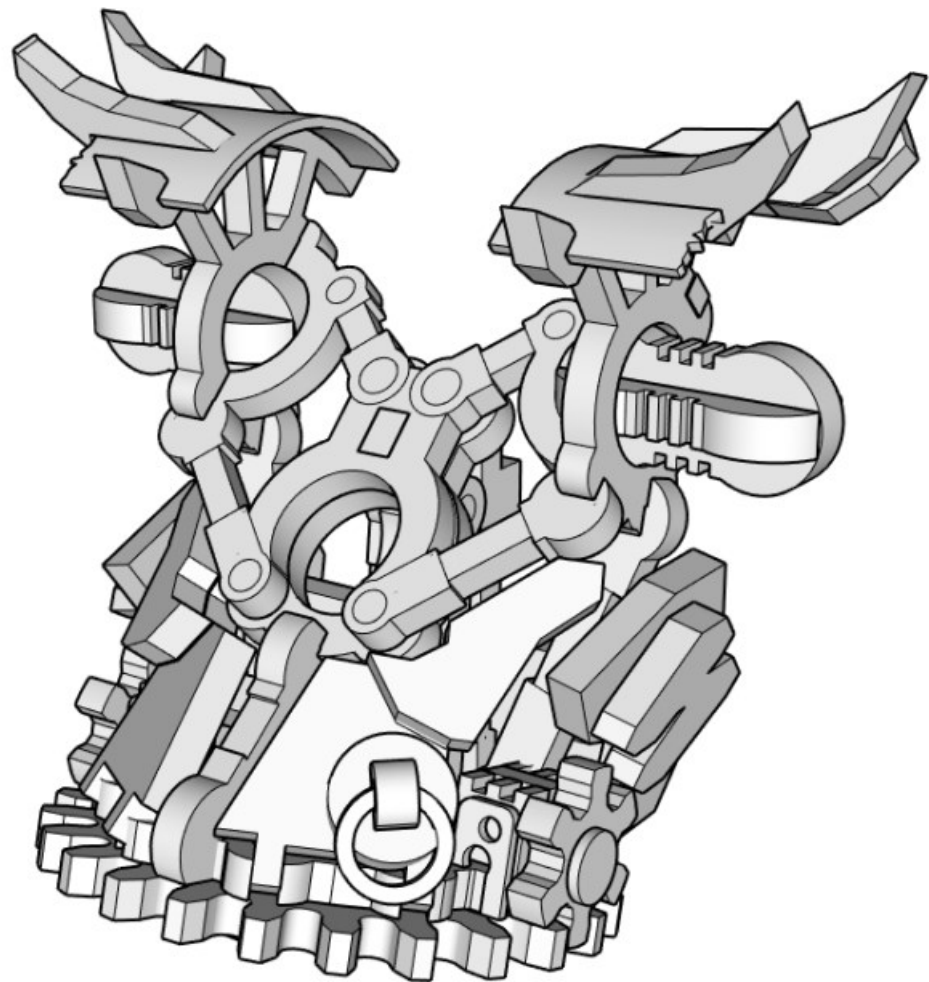
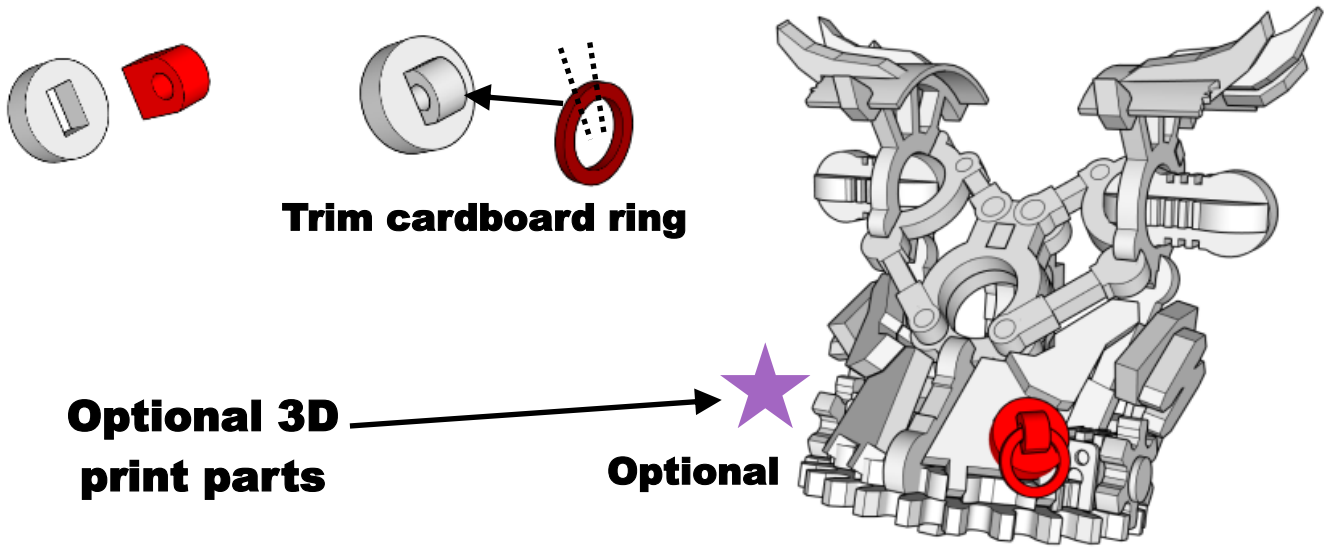
Plug these bits in first



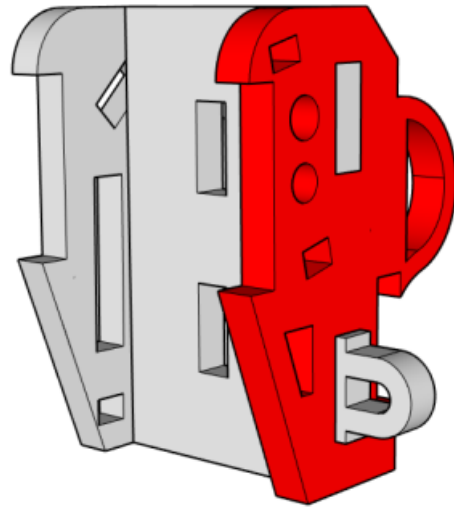
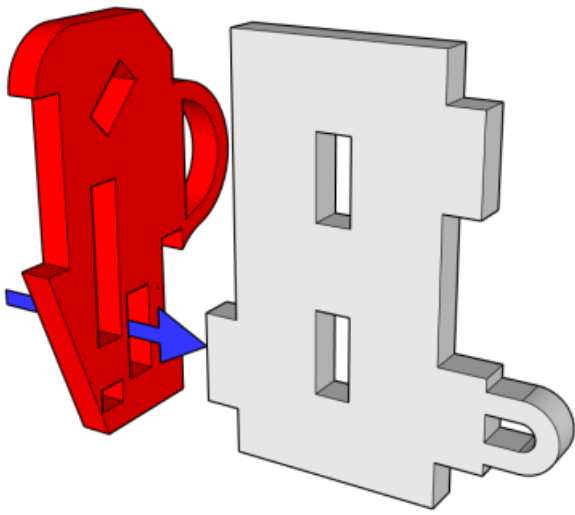


**Might be best to wait for
arms to be done before
positioning arm mounts**

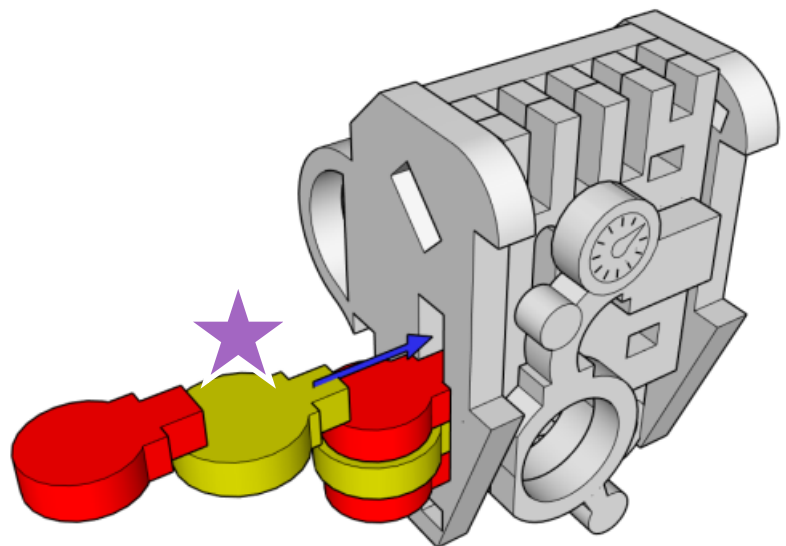
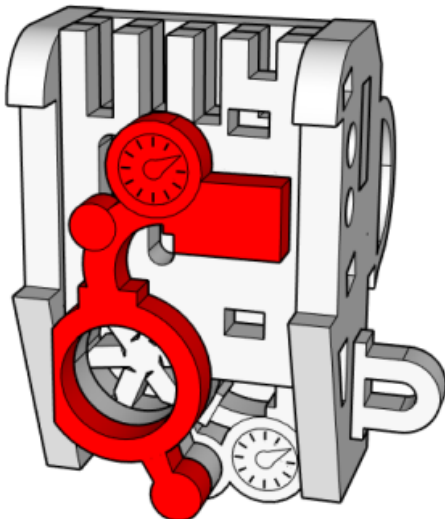
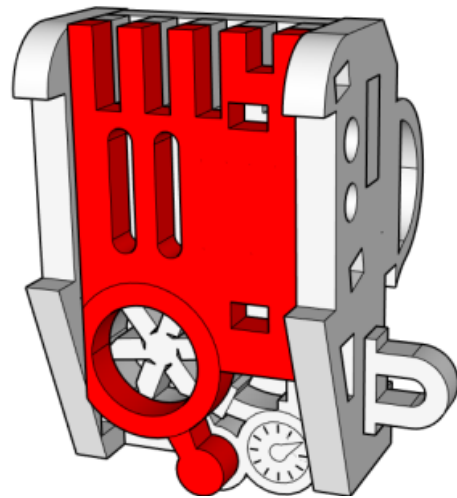
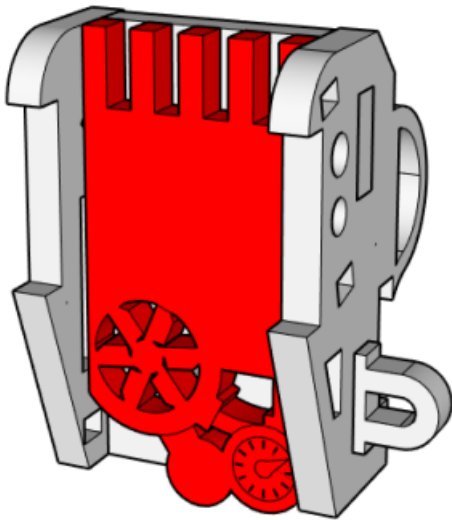


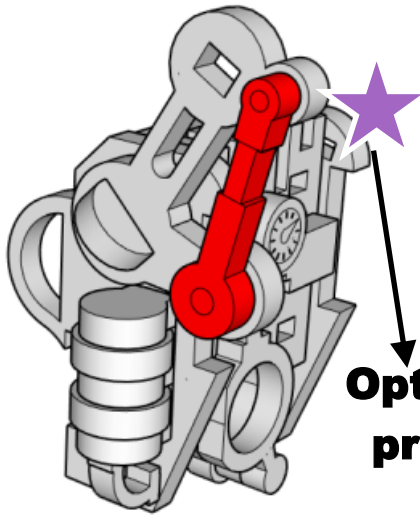
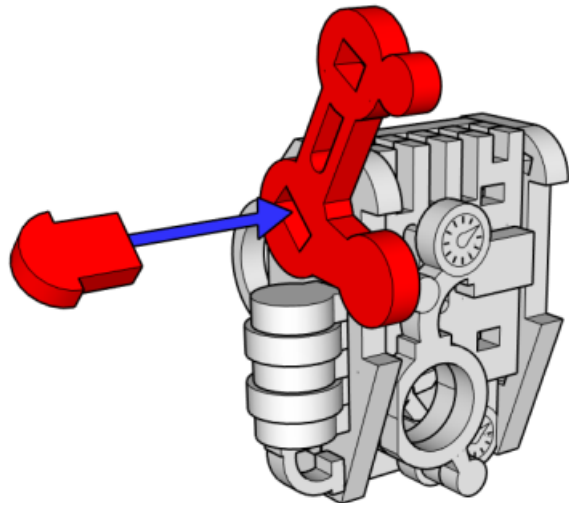
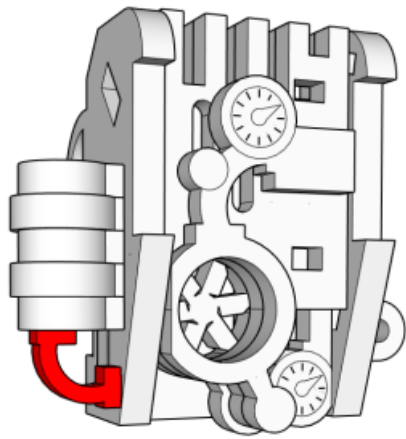


Chest done

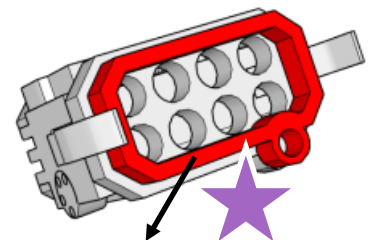
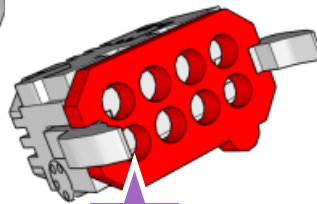
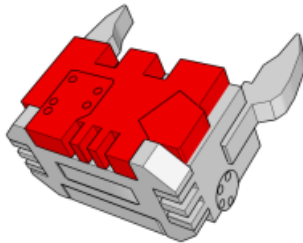
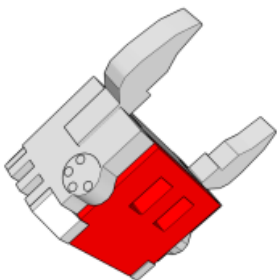
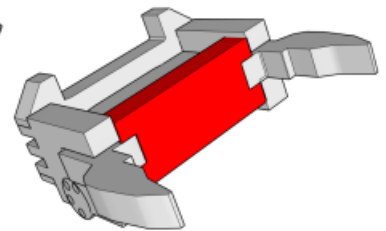
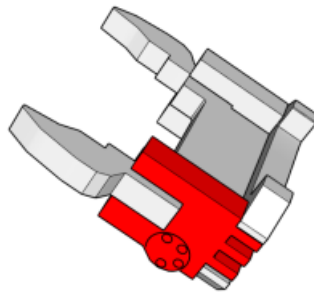
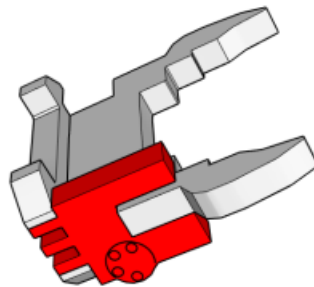
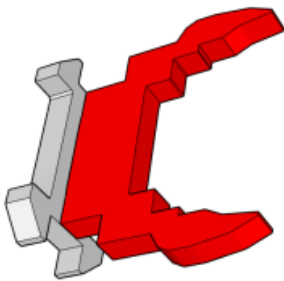
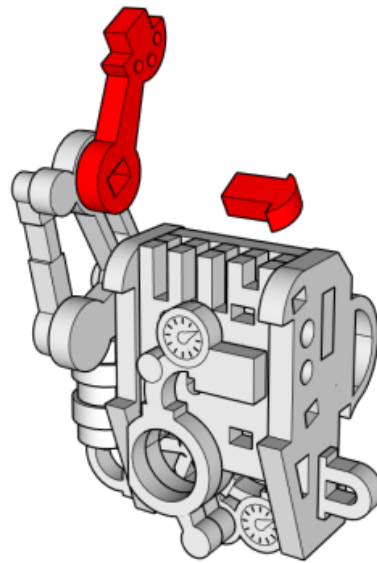


**Skip next 4 steps
If using 3D printed parts**

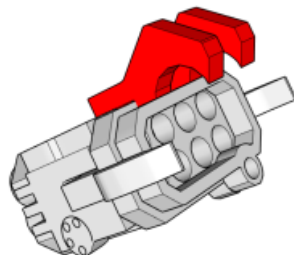
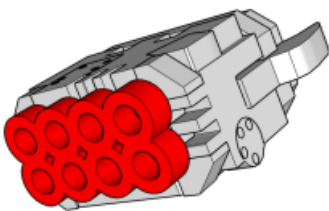


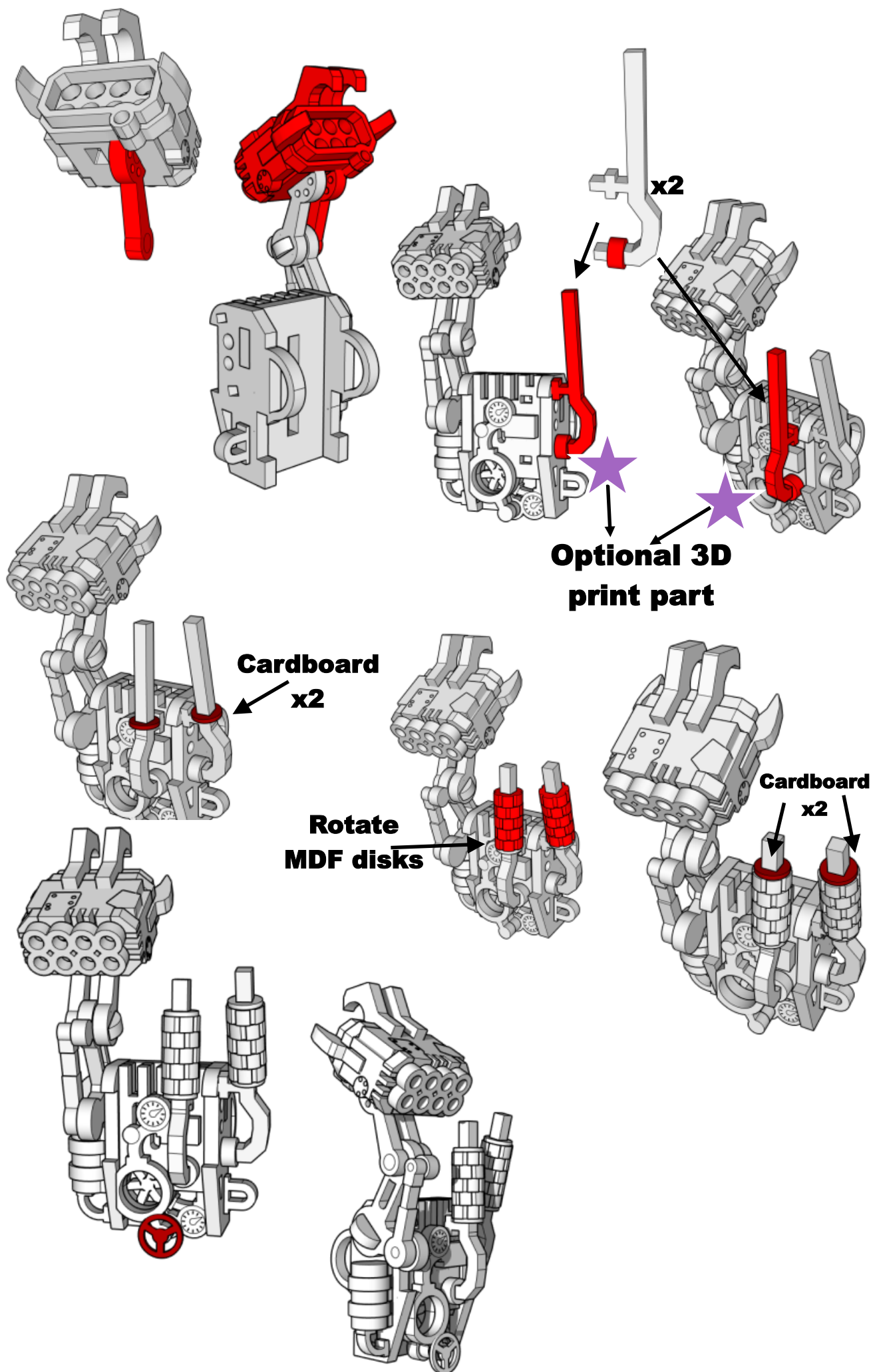


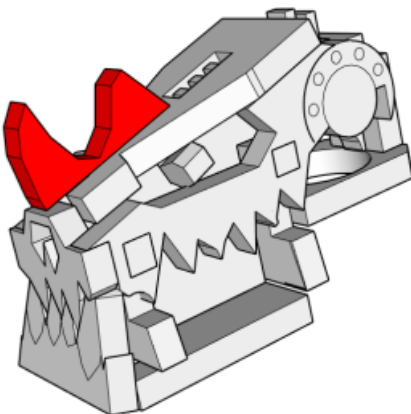
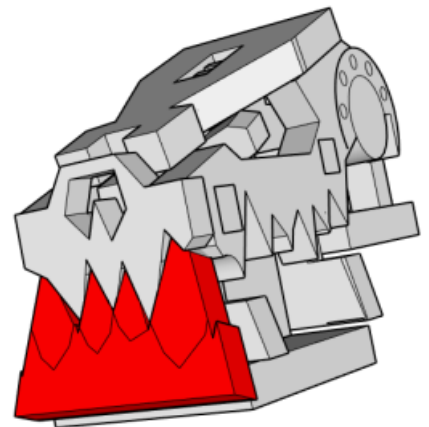
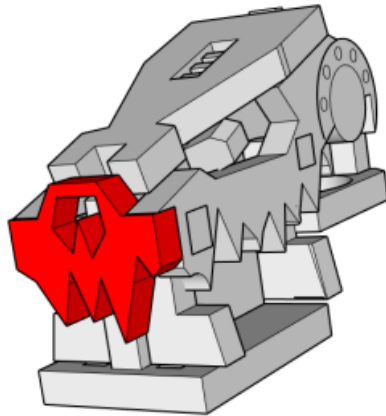
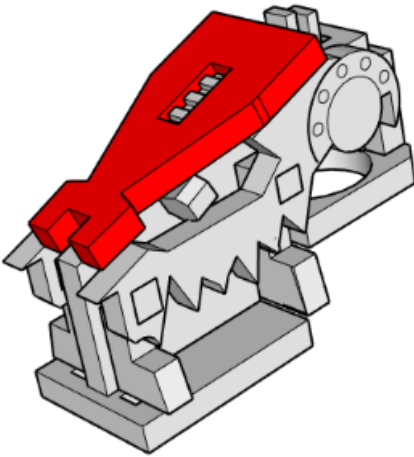
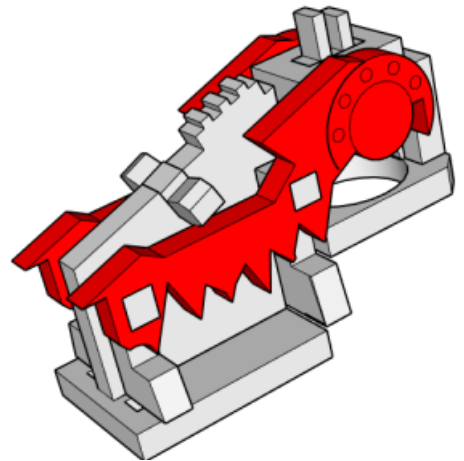
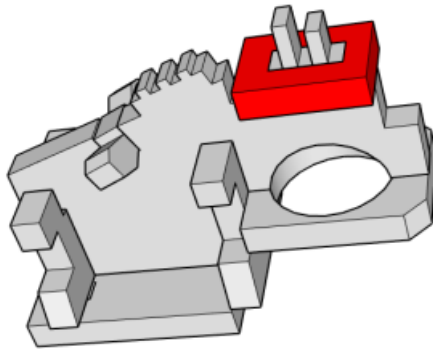
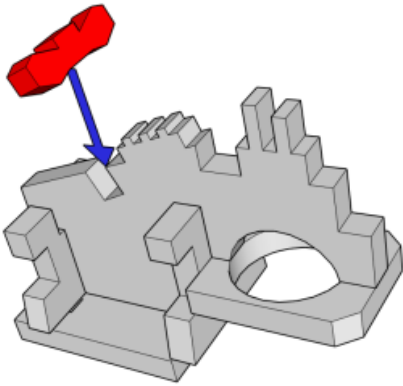
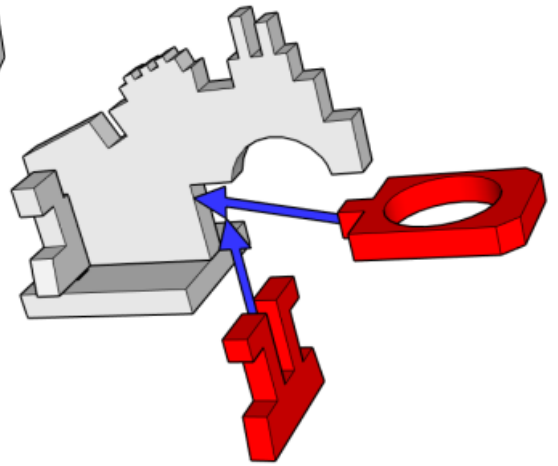
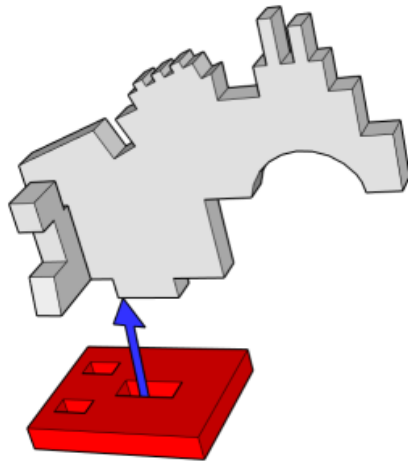
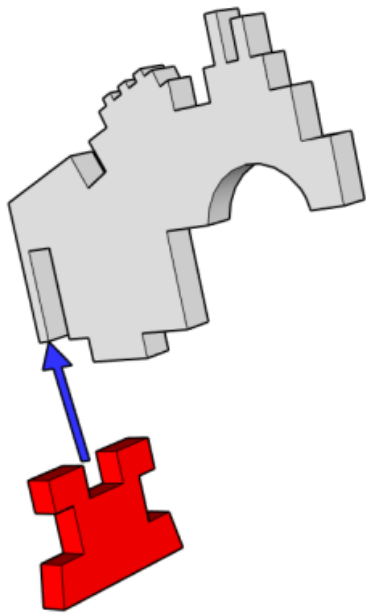
**Optional 3D
print part**

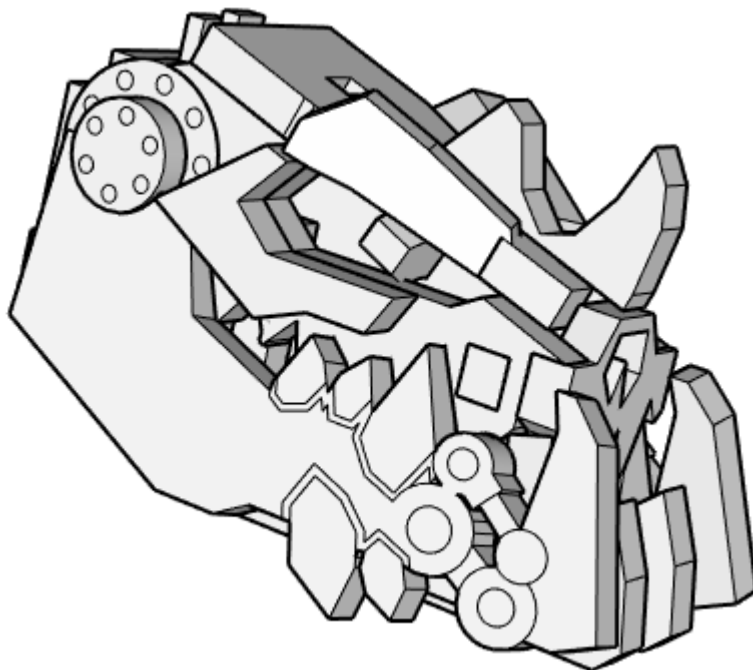
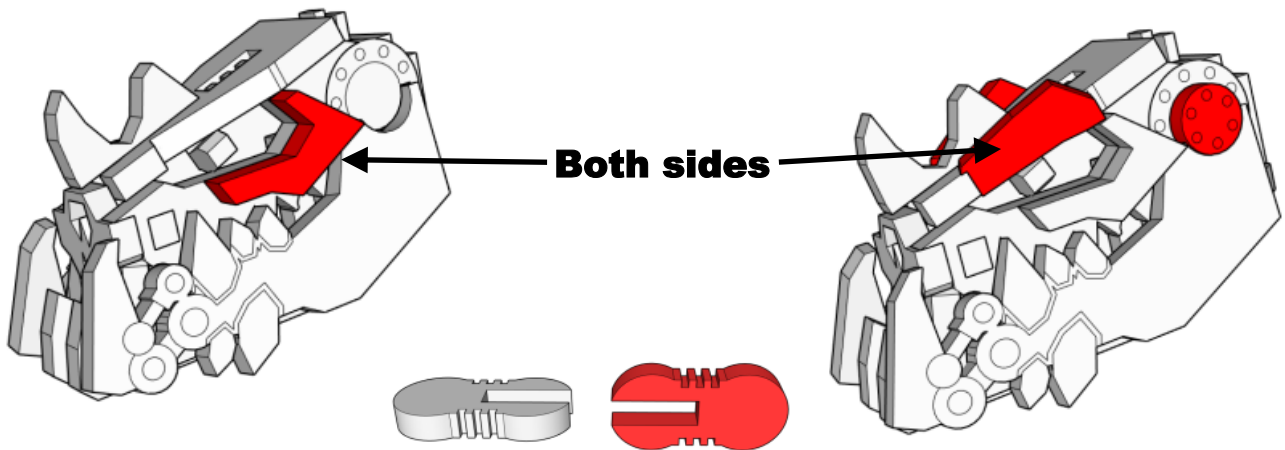
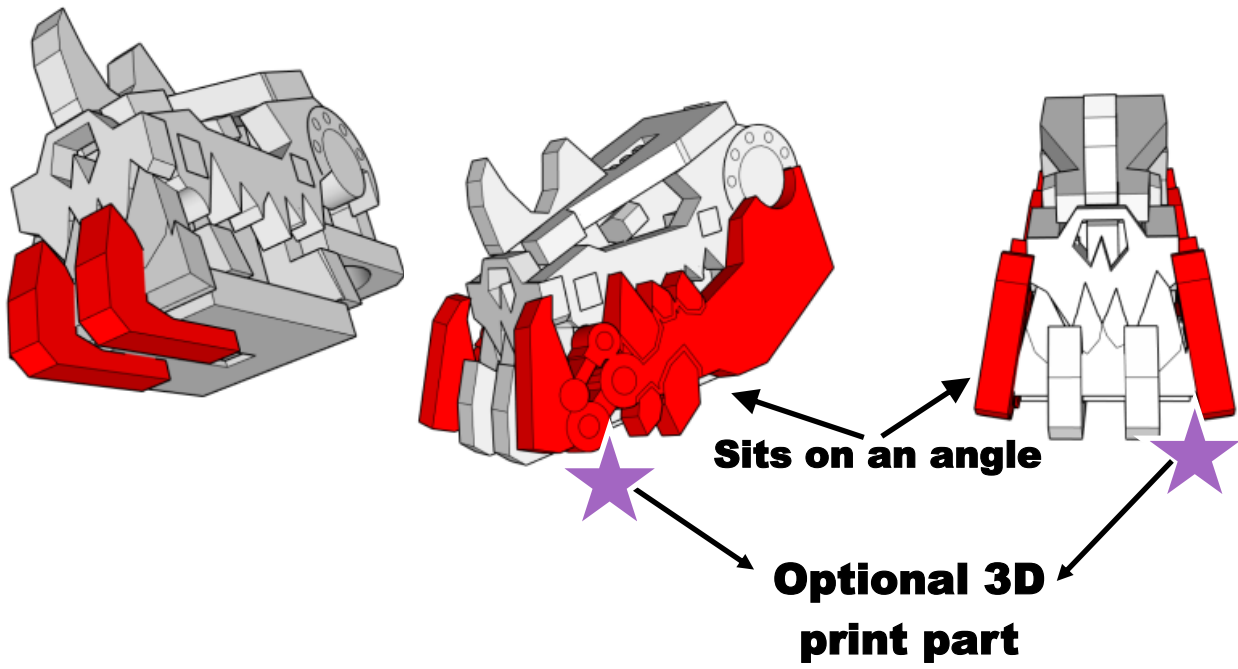


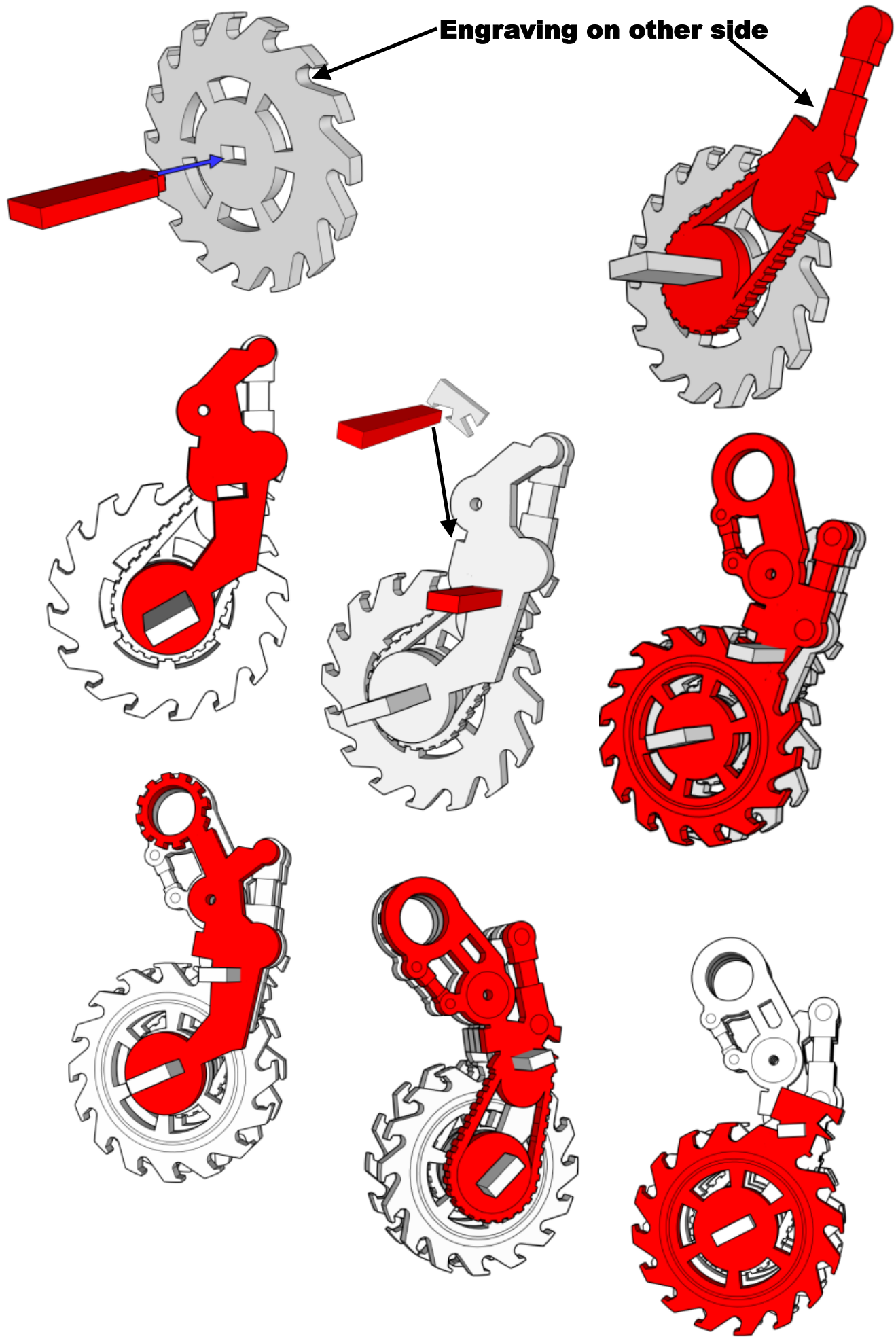
**Optional 3D
print part**

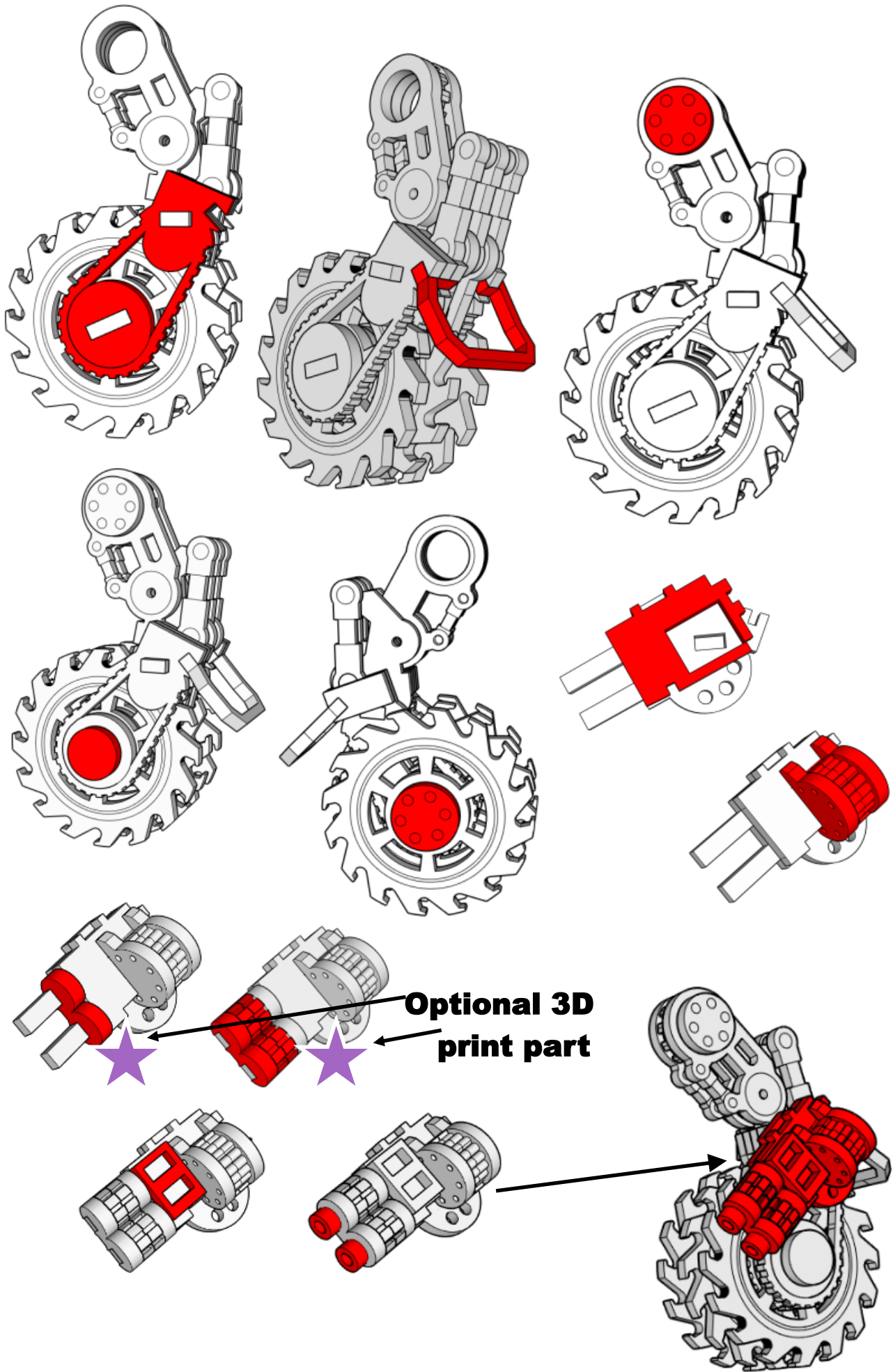


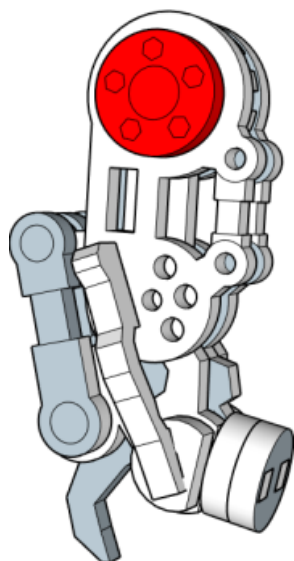
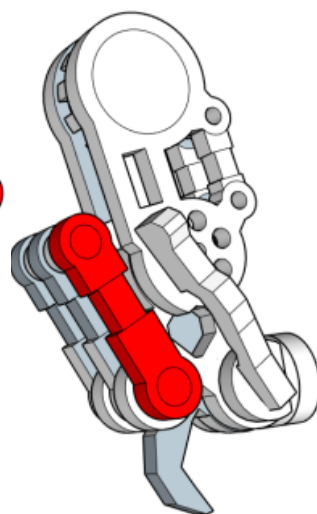
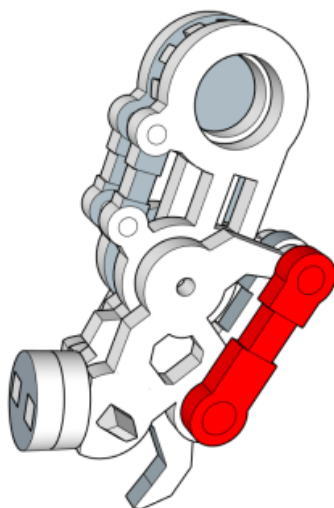
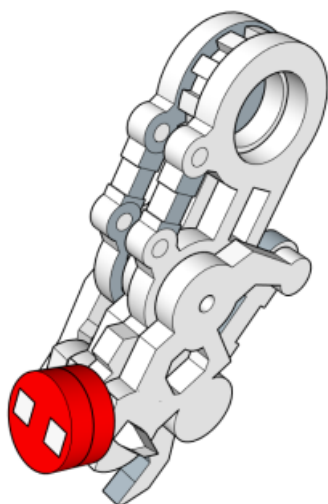
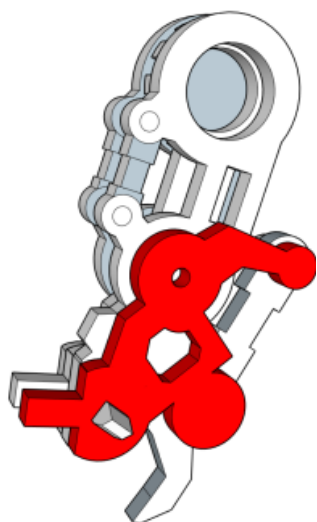
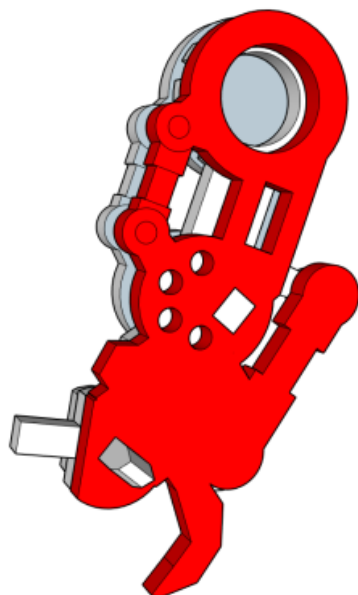
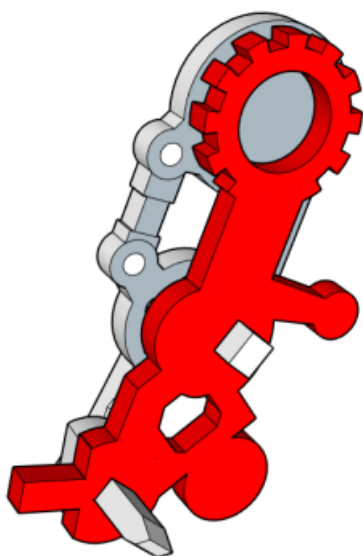
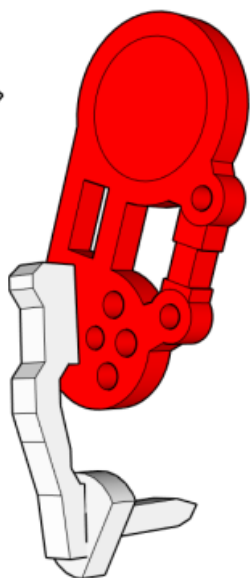
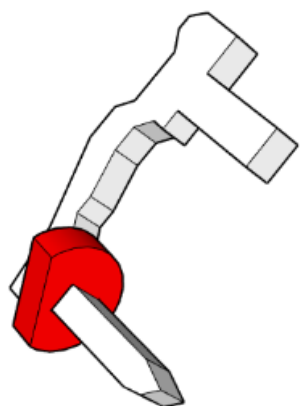


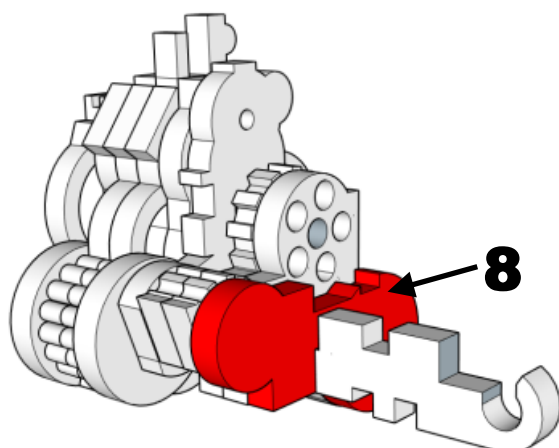
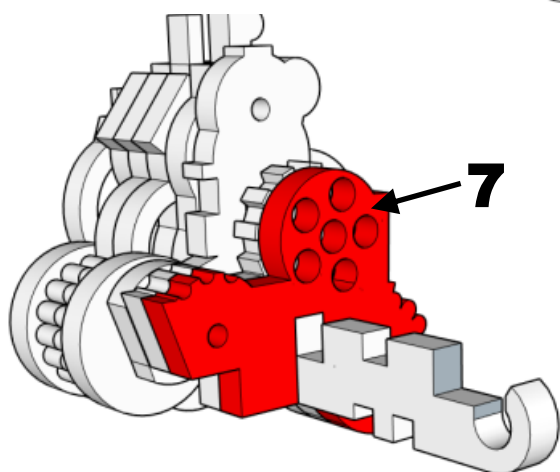
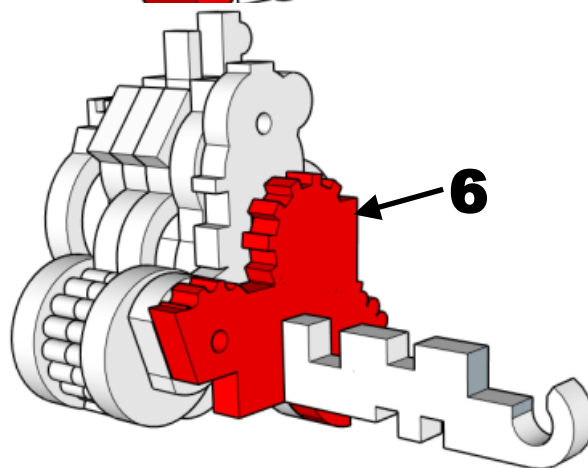
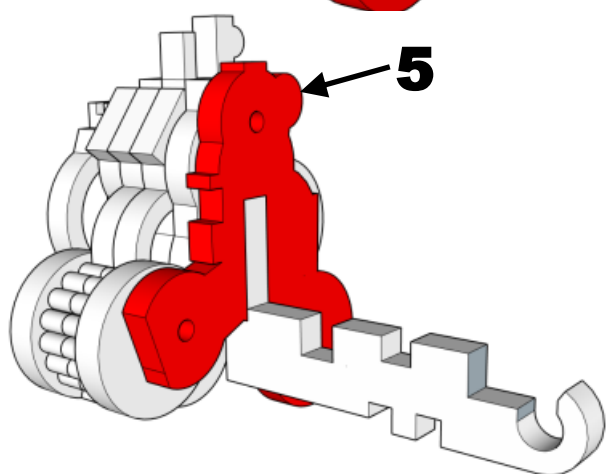
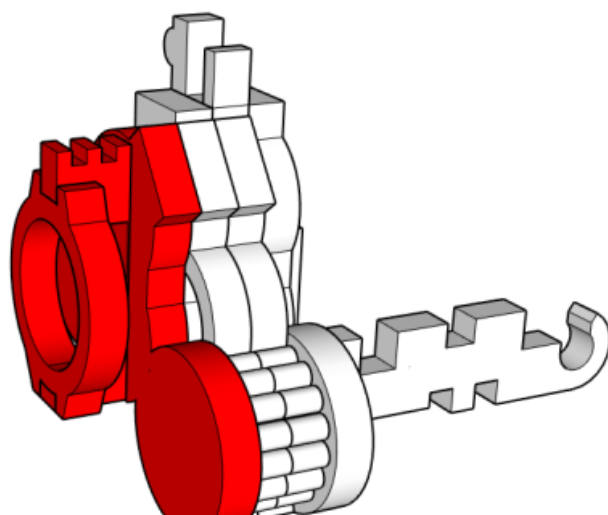
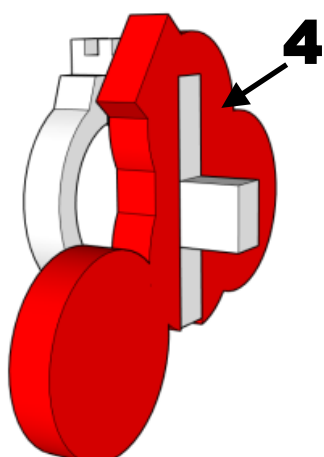
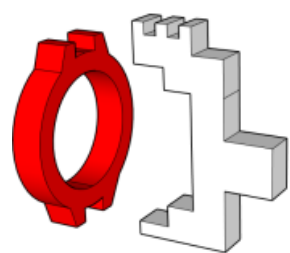
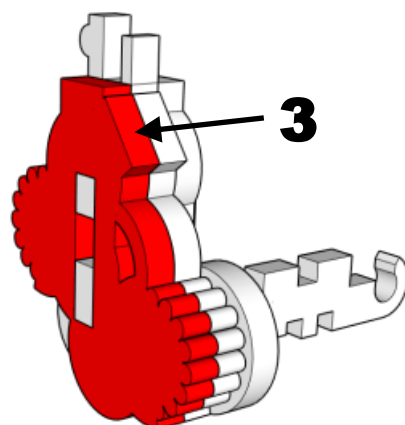
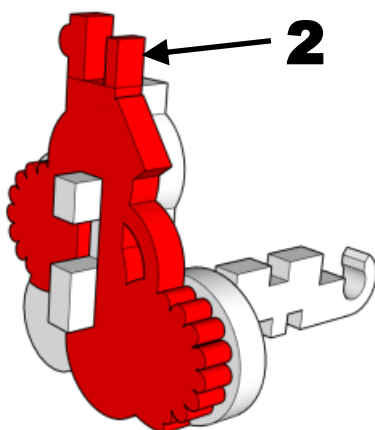
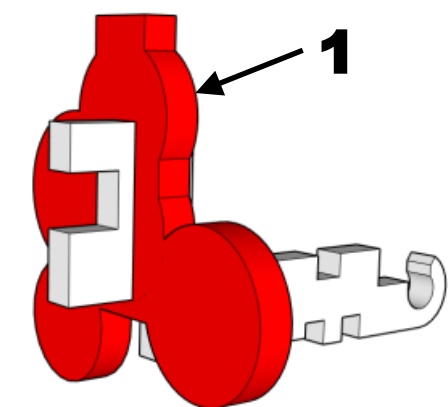


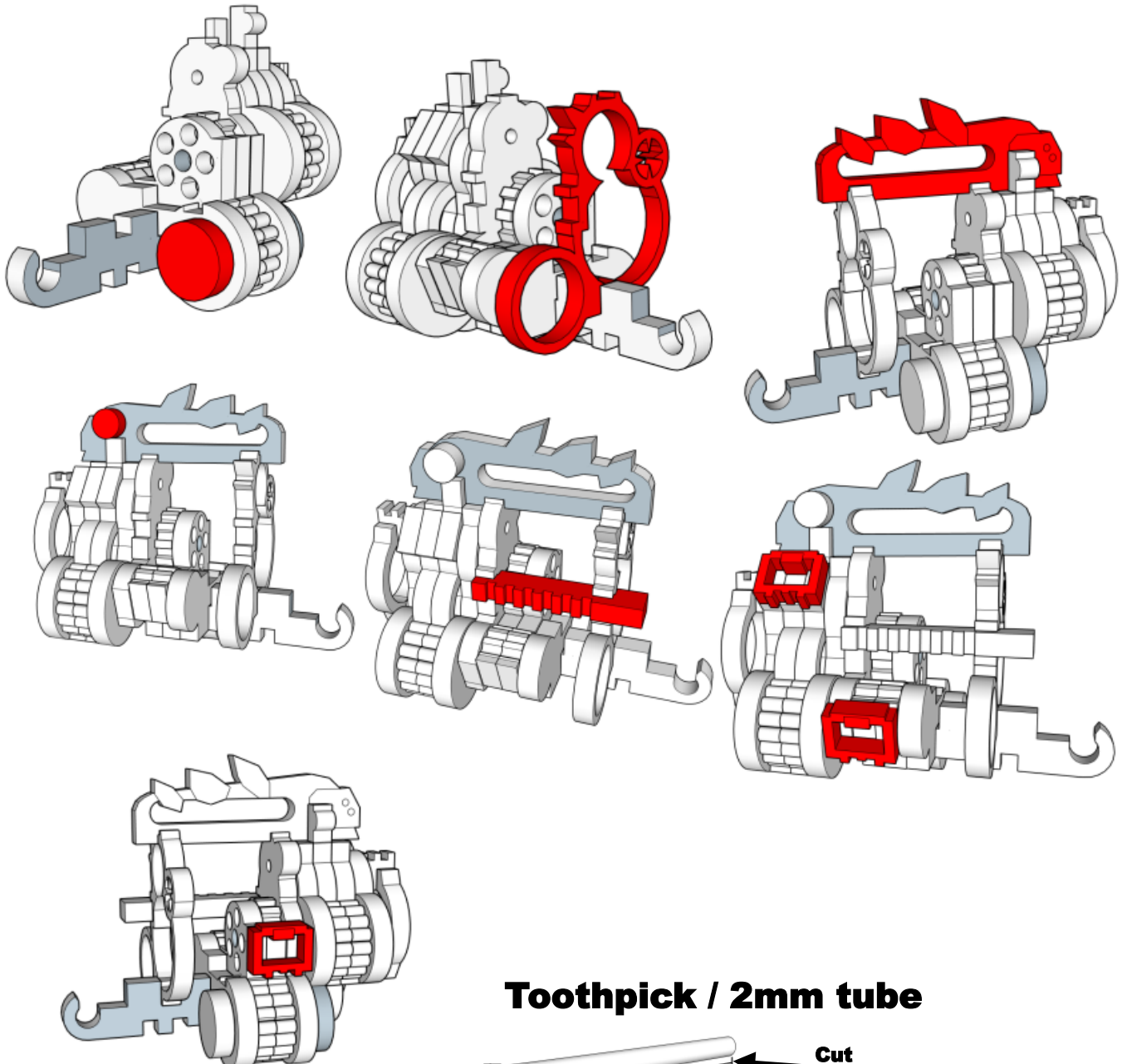




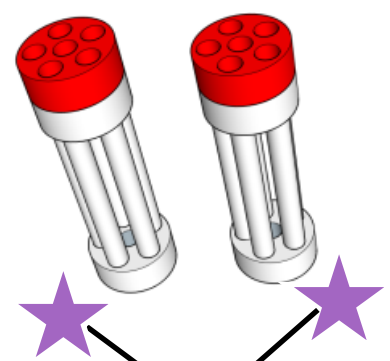
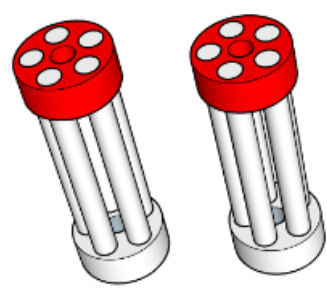
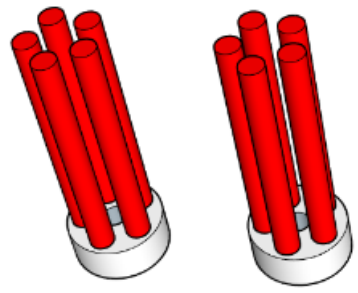




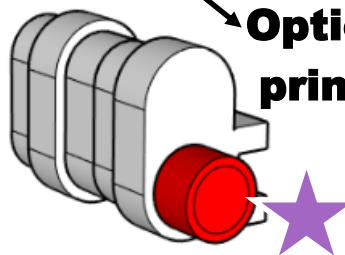
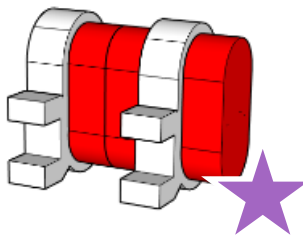
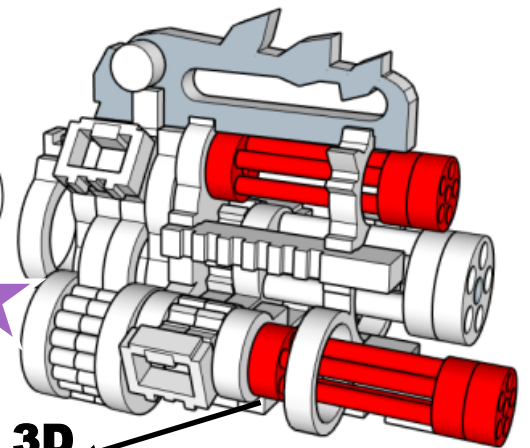
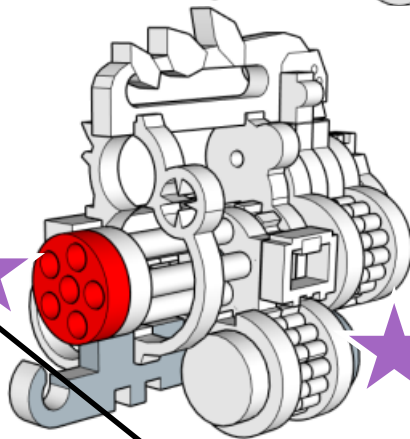
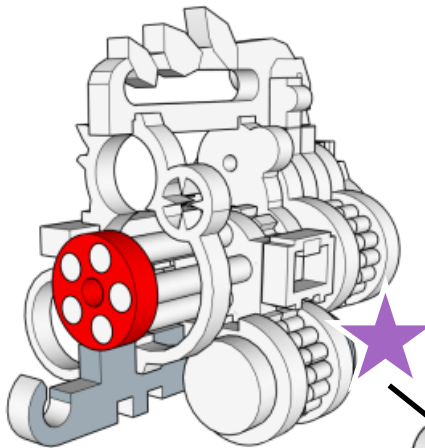
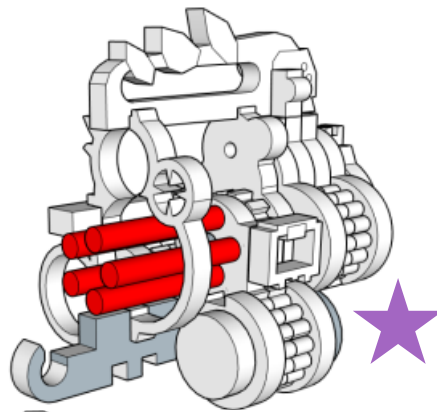
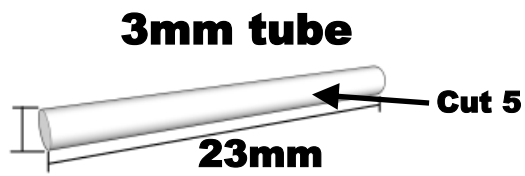




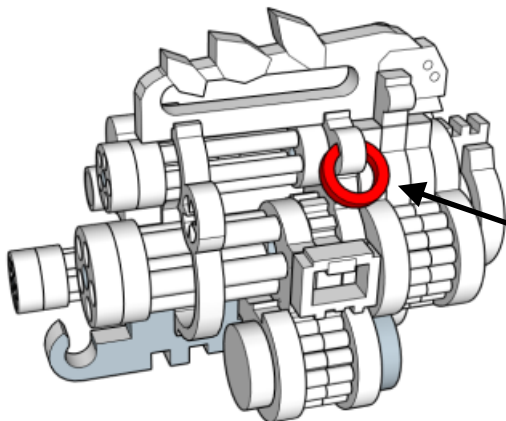
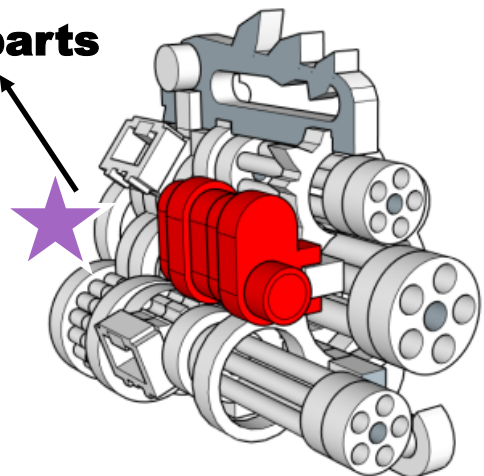
Toothpick / 2mm tube



**Optional 3D
print part**

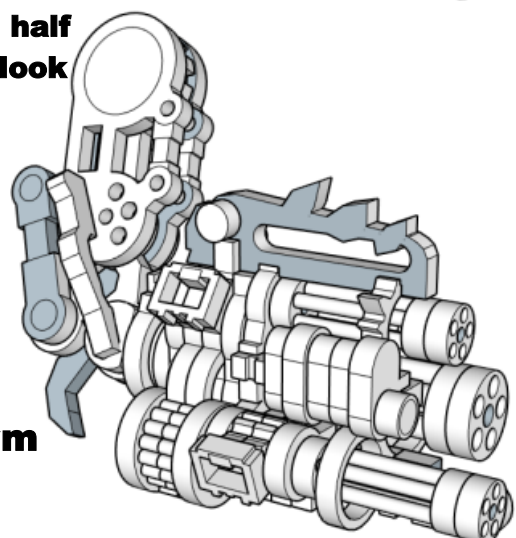


**Optional 3D
print parts**

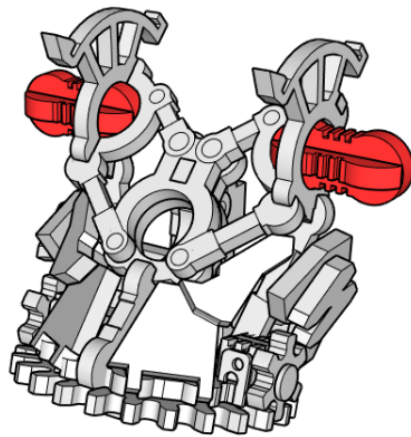


**Cut MDF in half
For better look**

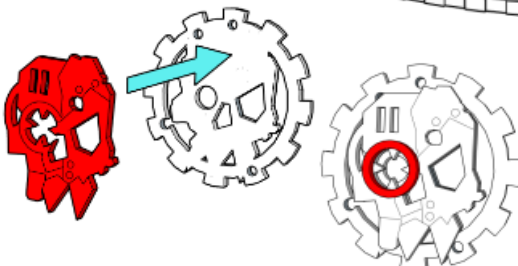
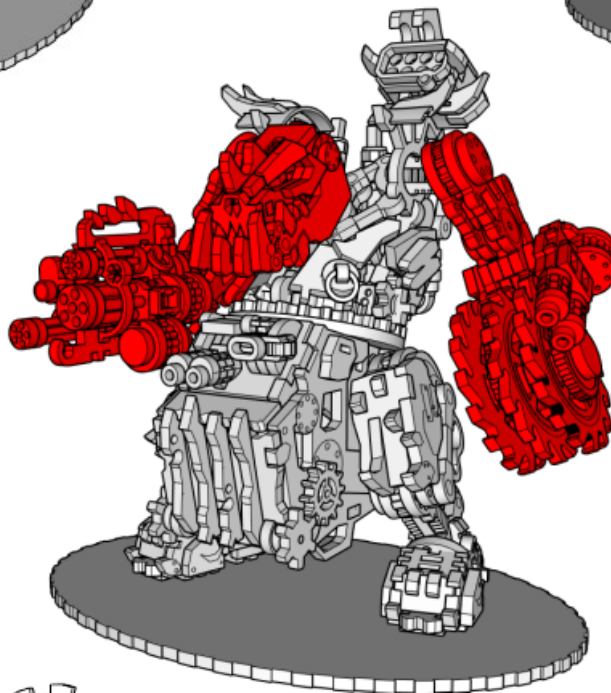
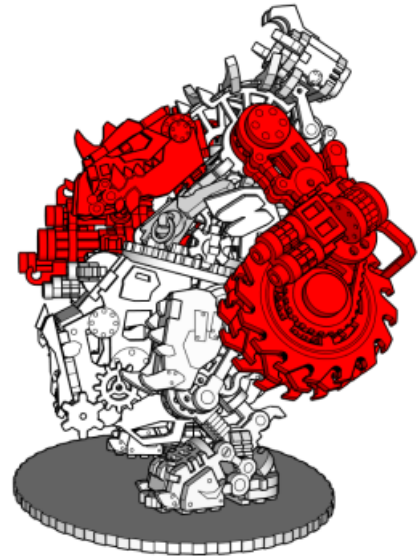
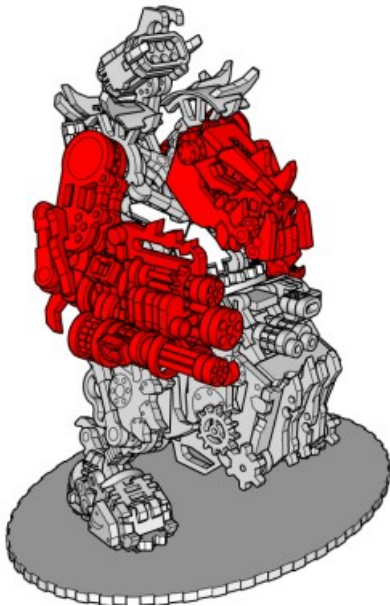
**Right arm
done!**



Attach arms and head with peanut joints



Pose as desired



OPTIONAL
cardboard icon can be
stuck on your model
wherever you like