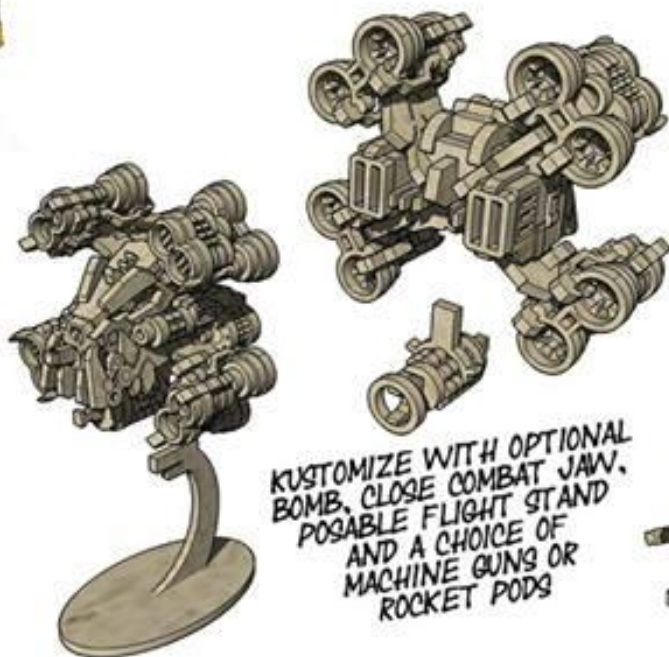


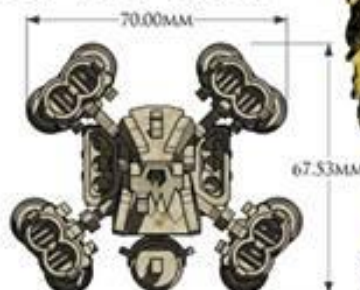
# MINIATURE SCENERY

## ORXWING



KUSTOMIZE WITH OPTIONAL  
BOMB, CLOSE COMBAT JAW,  
POSSIBLE FLIGHT STAND  
AND A CHOICE OF  
MACHINE GUNS OR  
ROCKET PODS

KIT INCLUDES 1 MDF MODEL



MINIATURE SCENERY IS DESIGNED FOR 28MM MINIATURES,  
IDEAL FOR GAMERS AND COLLECTORS

CE FOR DETAILED, EASY TO FOLLOW INSTRUCTIONS VISIT  
[WWW.MINIATURESCENERY.COM](http://WWW.MINIATURESCENERY.COM)

Contents may contain small parts. Not suitable for children under 6 years old. The exclusive copyright on the model designs and components within this case is the property of Miniature Scenery, 2016. All rights reserved.



# MINIATURE SCENERY

## INSTRUCTIONS ORX-WING

### PREPARATION

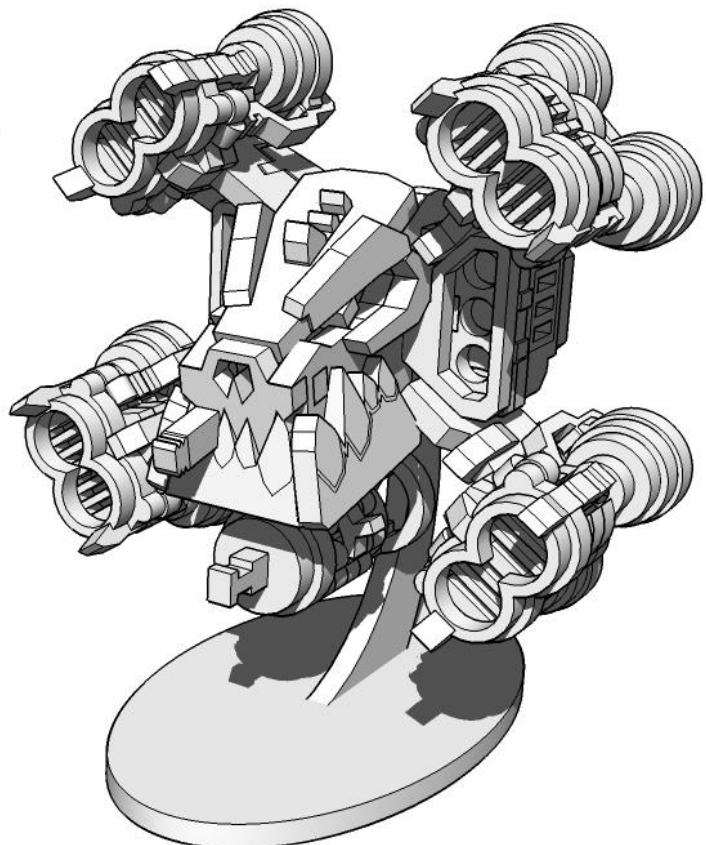
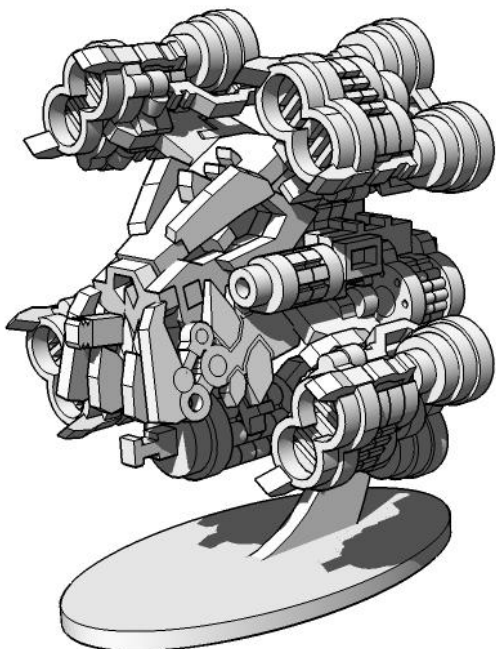
You will need:

- Cutting mat or something to protect your table.
- PVA/Wood glue or superglue if you prefer.
- Small file or sand paper.
- Small blade / hobby knife

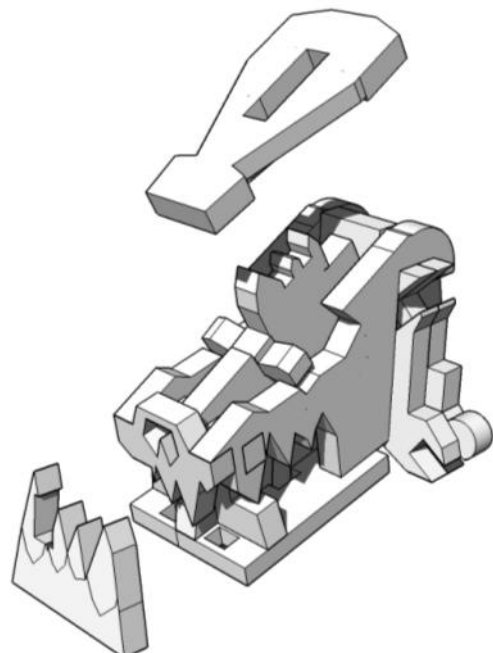
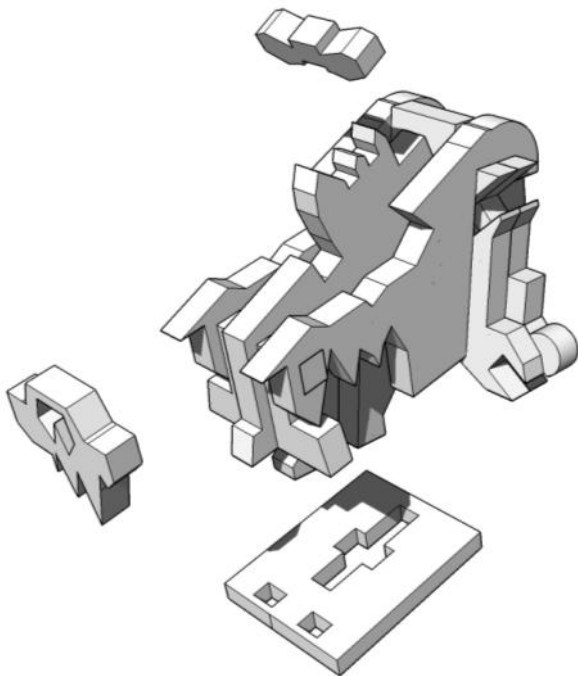
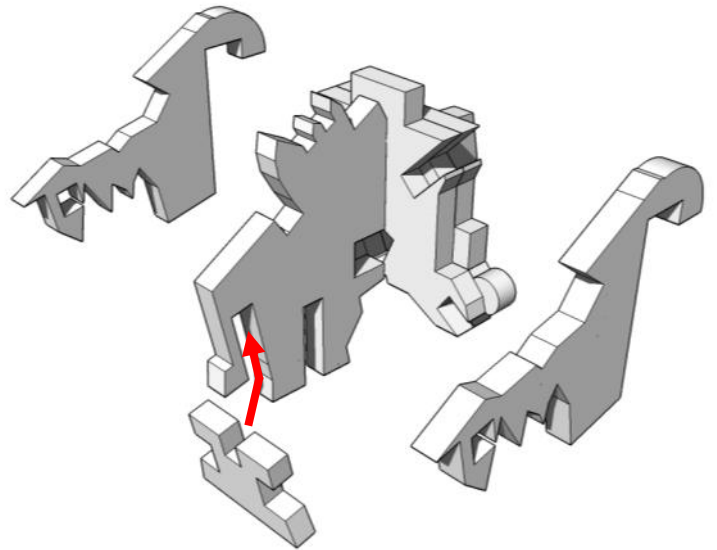
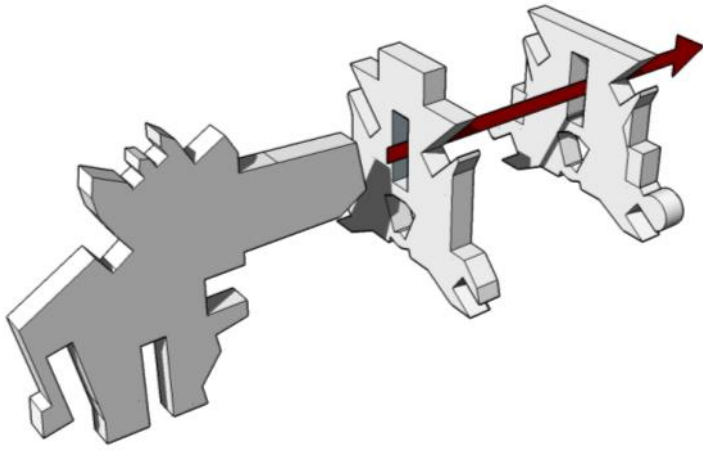


### GENERAL PROCESS

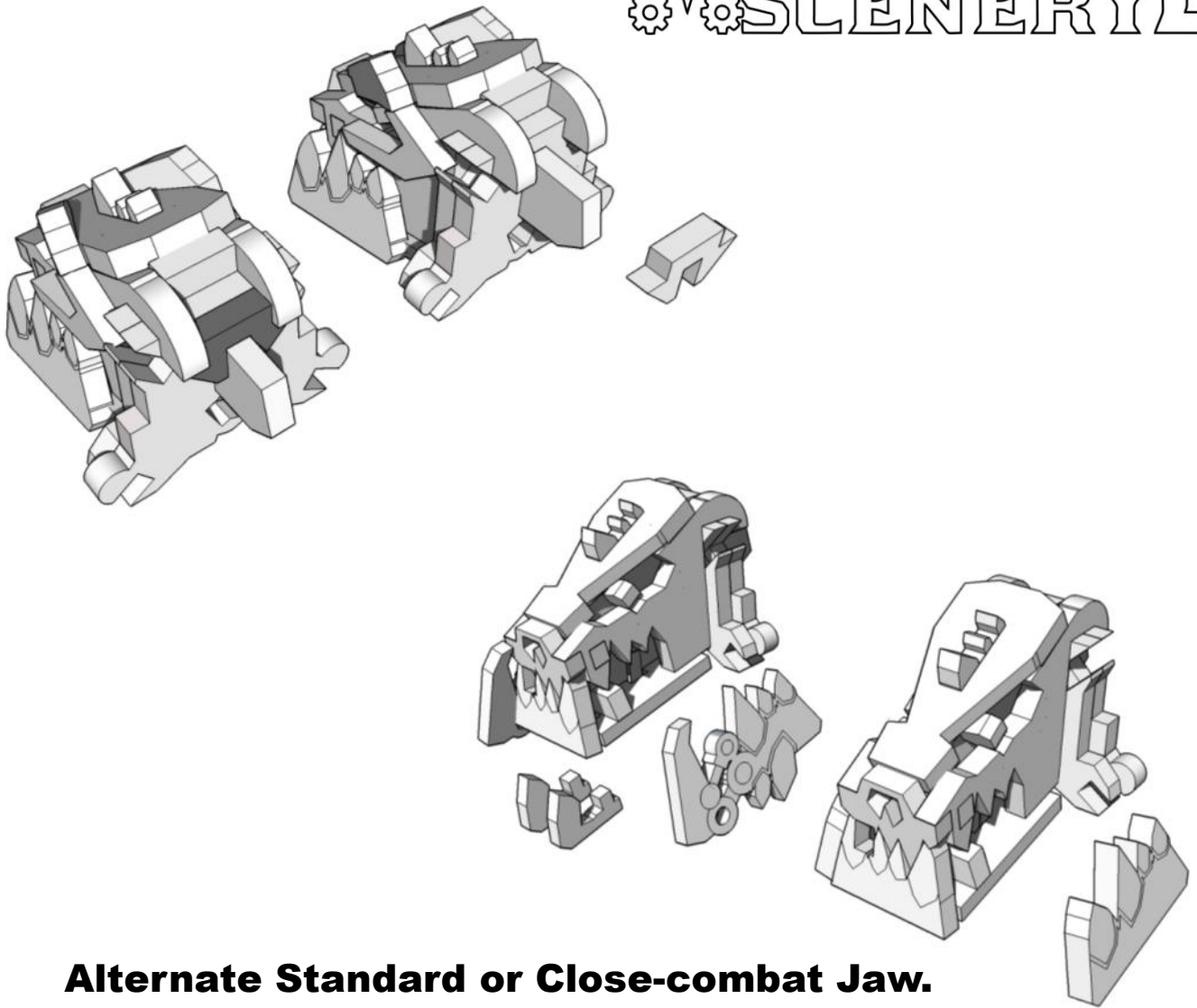
- Clear plenty of table space, you will need it.
- Parts should remove easily from the board by pressing through and popping them out. It's a good idea to cut through the tiny joins first though, and some parts (particularly smaller, more detailed parts) may need more careful persuasion.
- Use file or sand paper to remove the small bur caused by the connection to the frame.
- It's a good idea to familiarise yourself with how the pieces fit together before gluing.
- Slot the parts together as shown by the pictures below, applying glue wherever there is a connection. (unless shown otherwise)
- Parts may be a very tight fit, slight trimming or sanding of parts may be needed for ease of assembly.



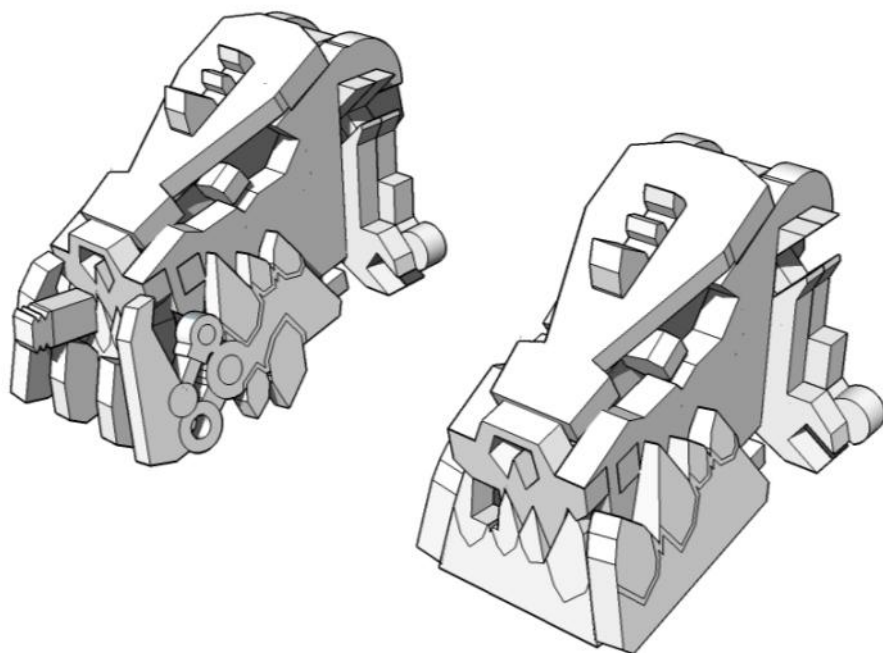
# MINIATURE SCENERY



# MINIATURE SCENERY

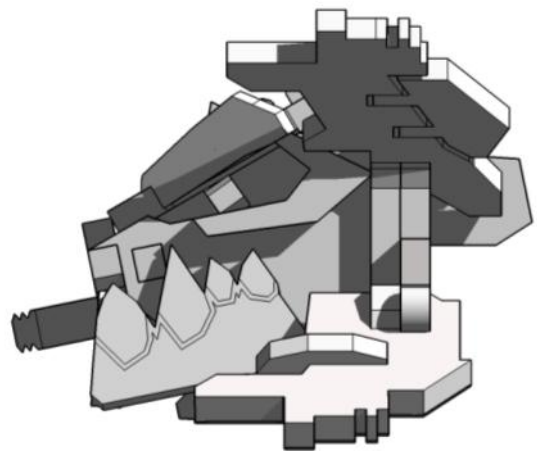
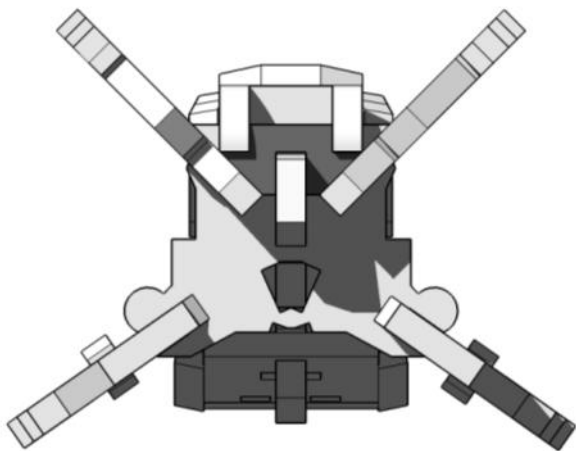
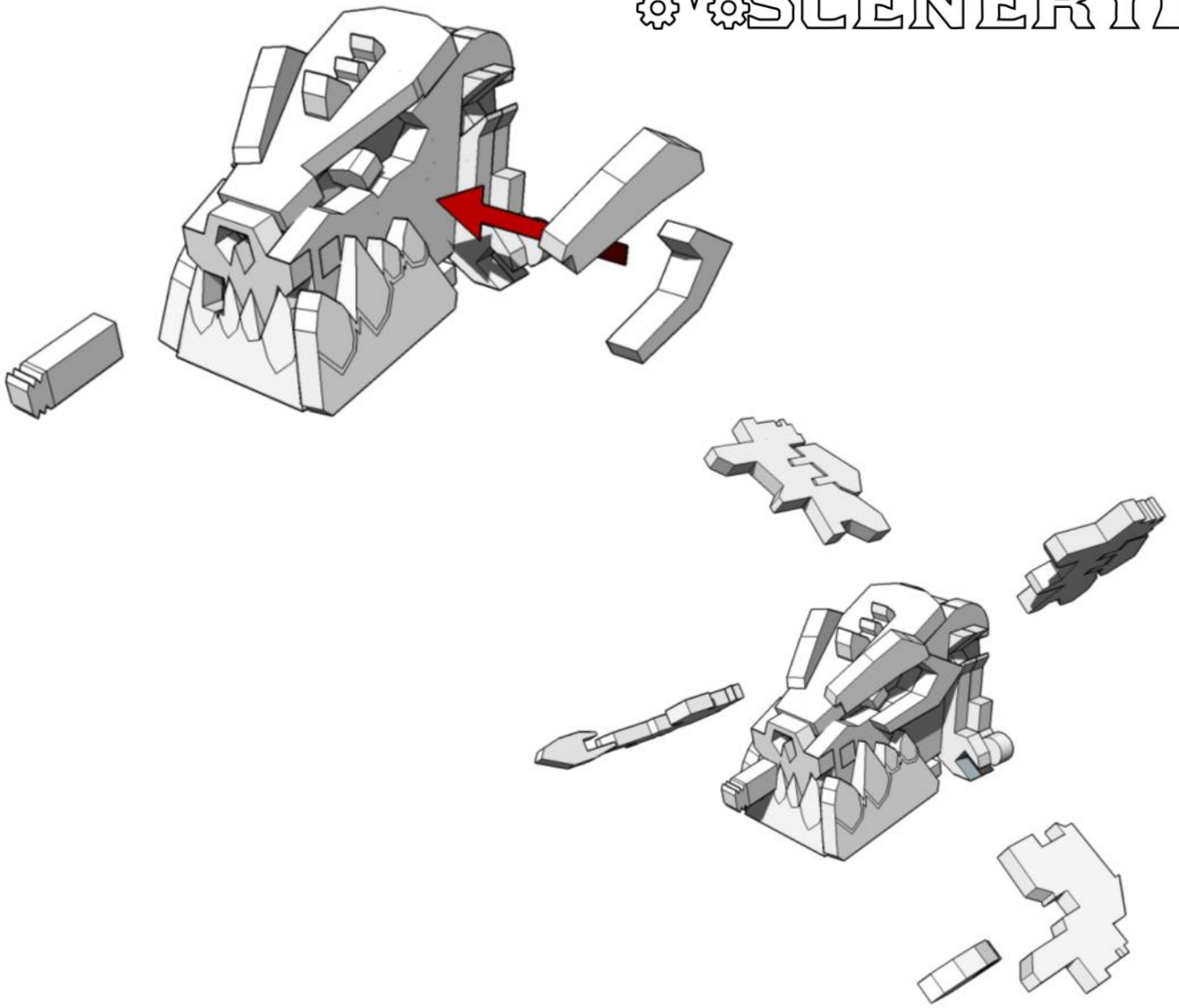


**Alternate Standard or Close-combat Jaw.**





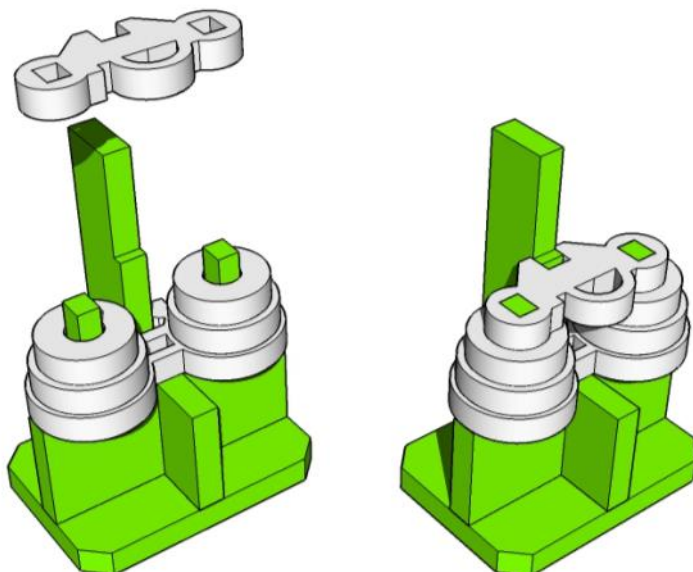
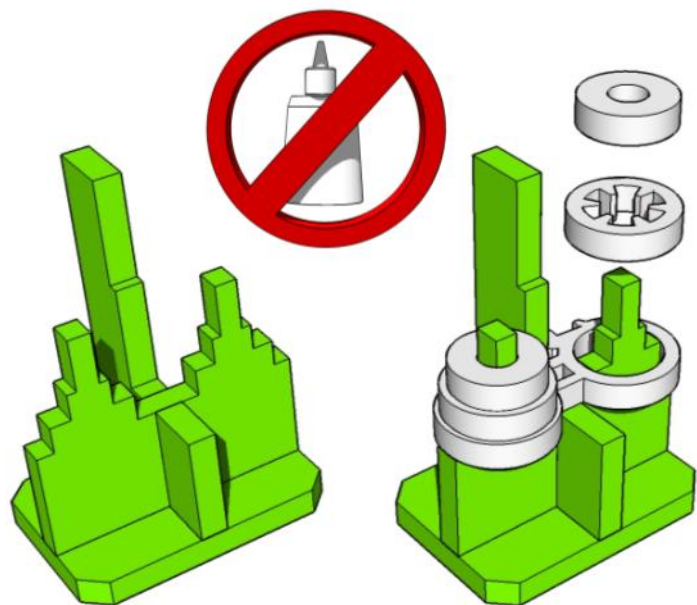
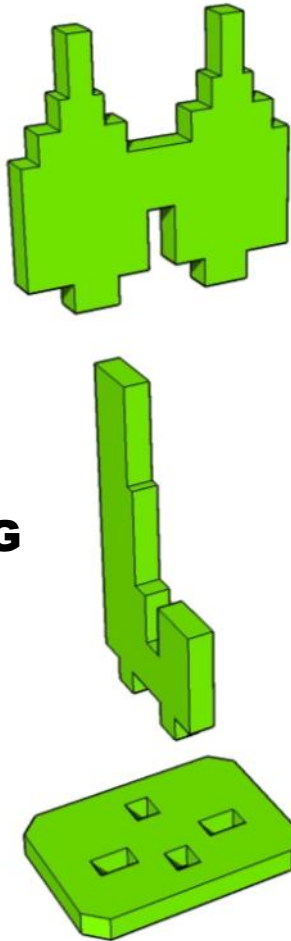
# MINIATURE SCENERY



# MINIATURE SCENERY

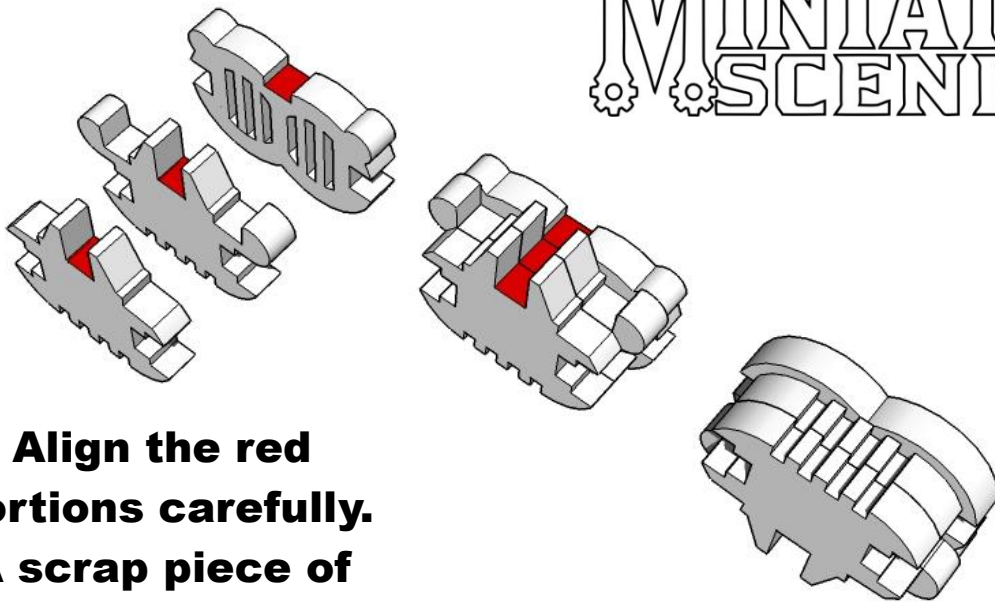
**The Engines are Fairly  
Complex, so a Jig has  
been provided to help  
with alignment .  
DO NOT GLUE ENGINE  
PARTS TO JIG!!!!**

**JIG**

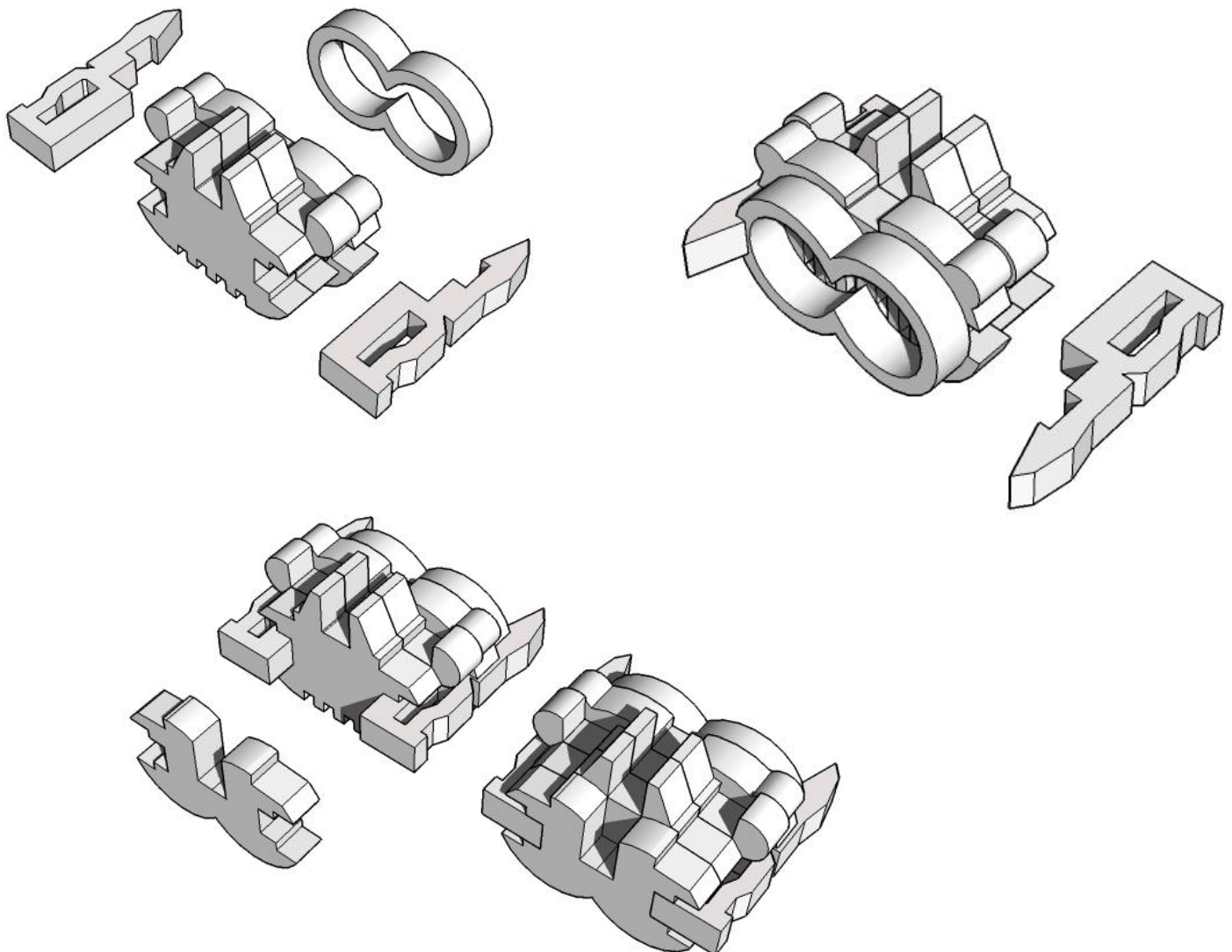


**Do Not use super-  
glue to assemble the  
engines, as it will not  
give you time to realign  
crooked parts.  
PVA is recommended.**

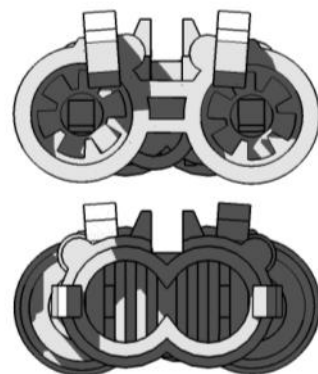
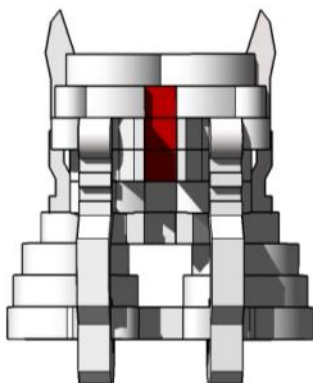
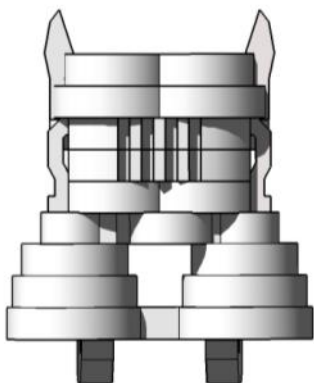
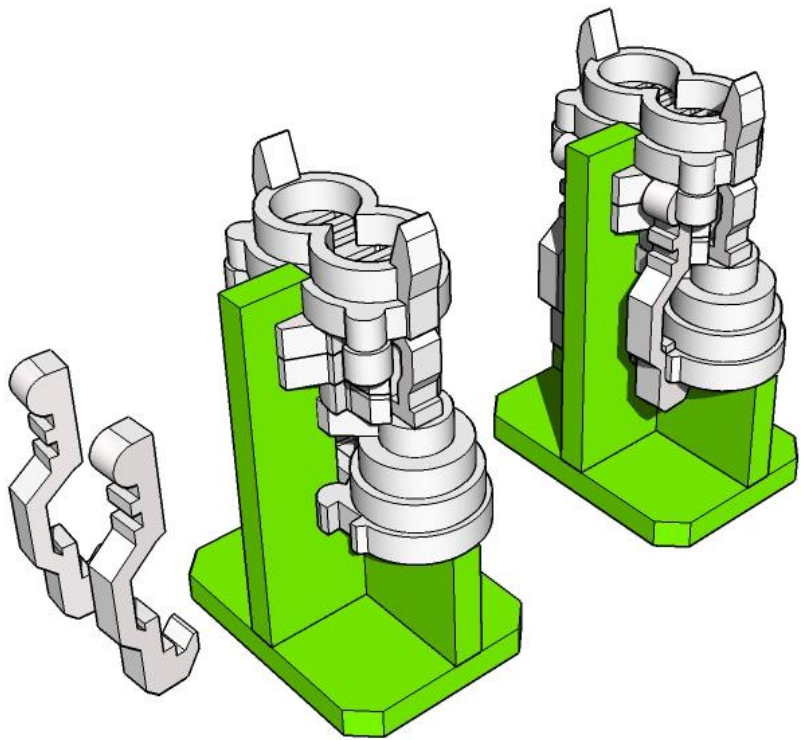
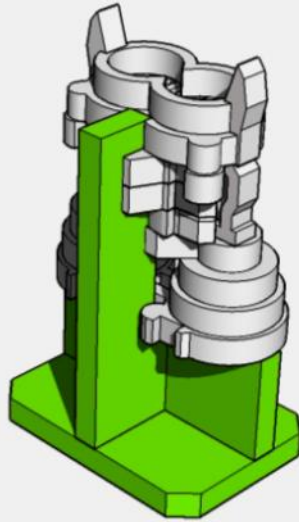
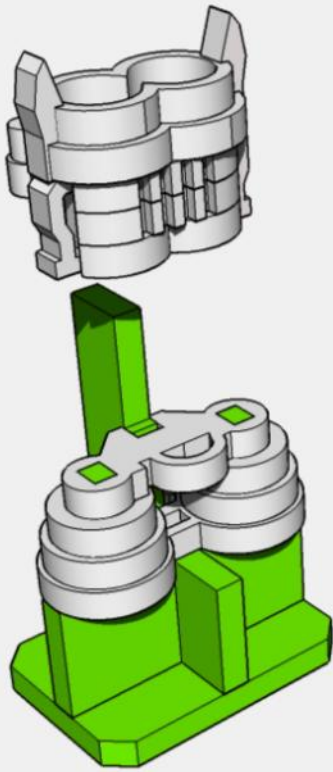
# MINIATURE SCENERY



**Align the red  
portions carefully.  
A scrap piece of  
MDF slotted into  
place is useful for  
this.**

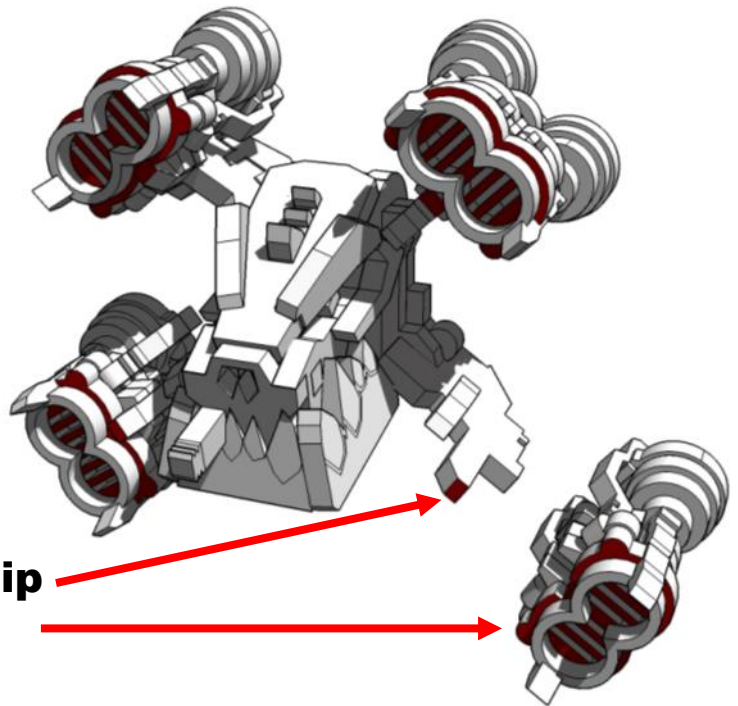
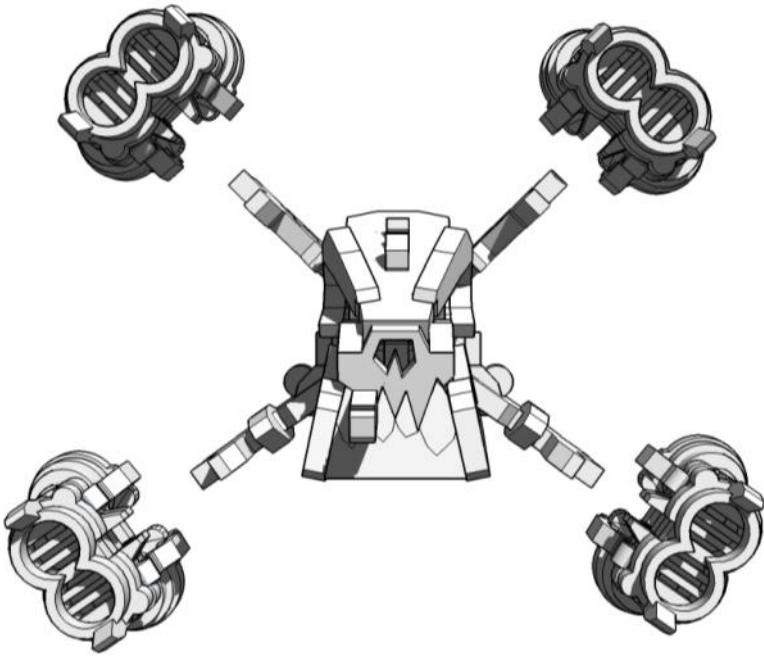


# MINIATURE SCENERY

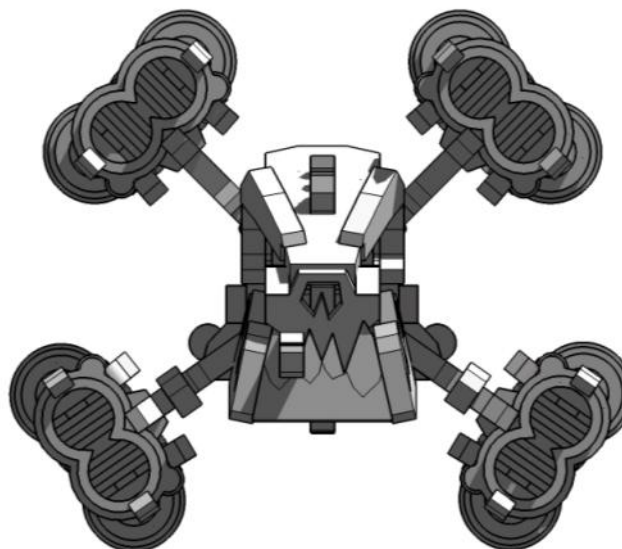
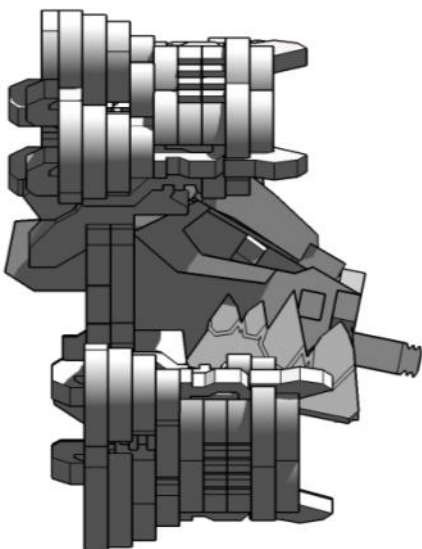




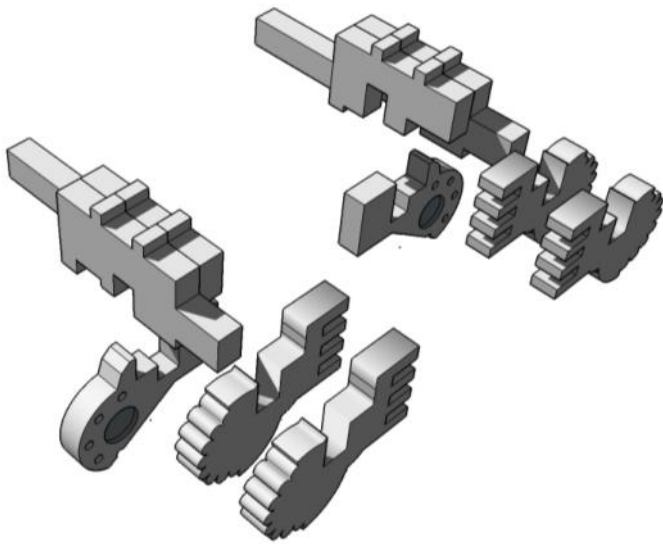
# MINIATURE SCENERY



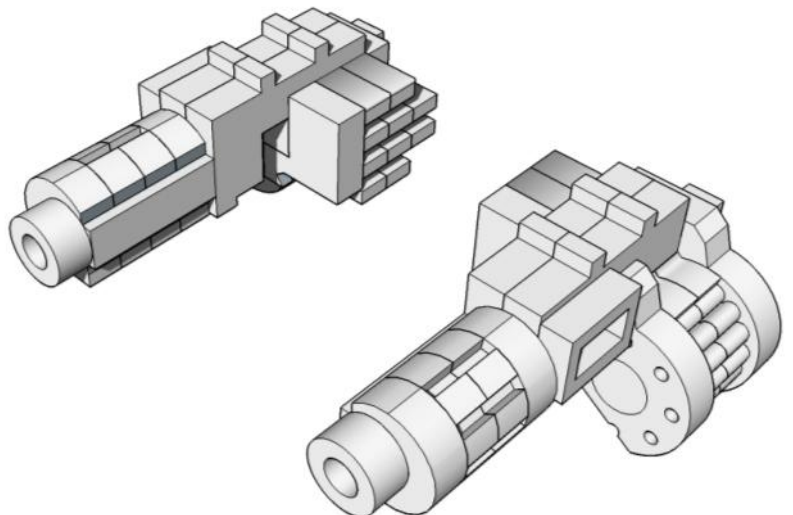
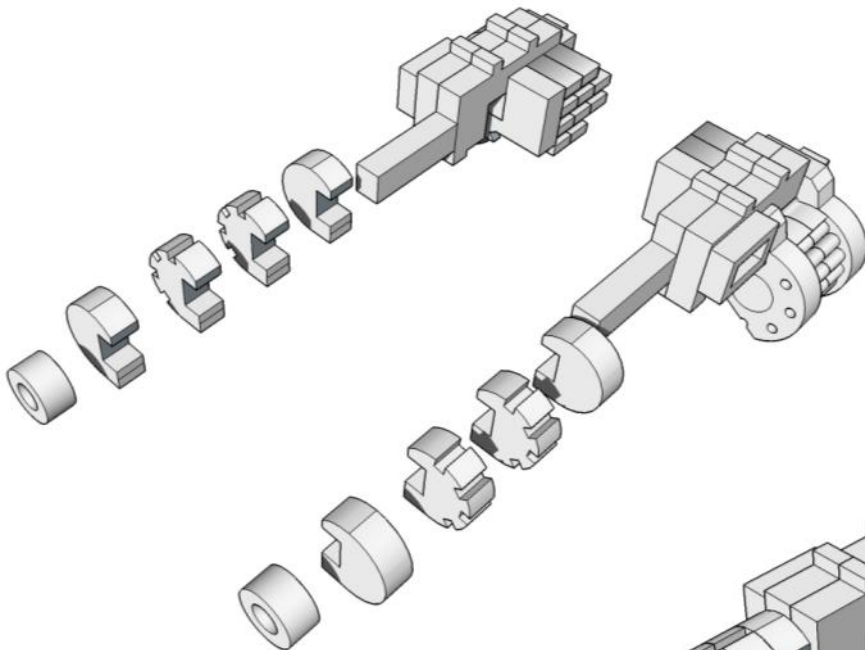
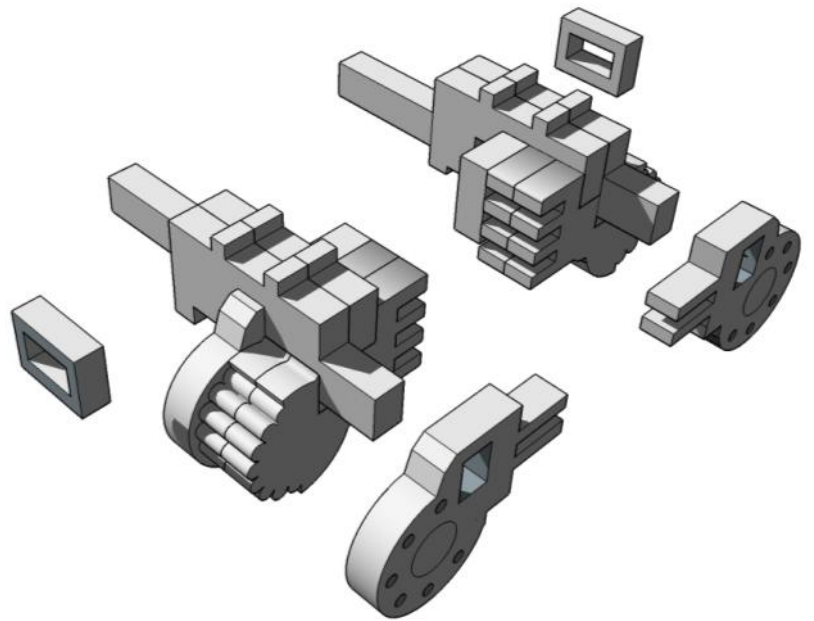
**Align with front tip  
of wing**



# MINIATURE SCENERY



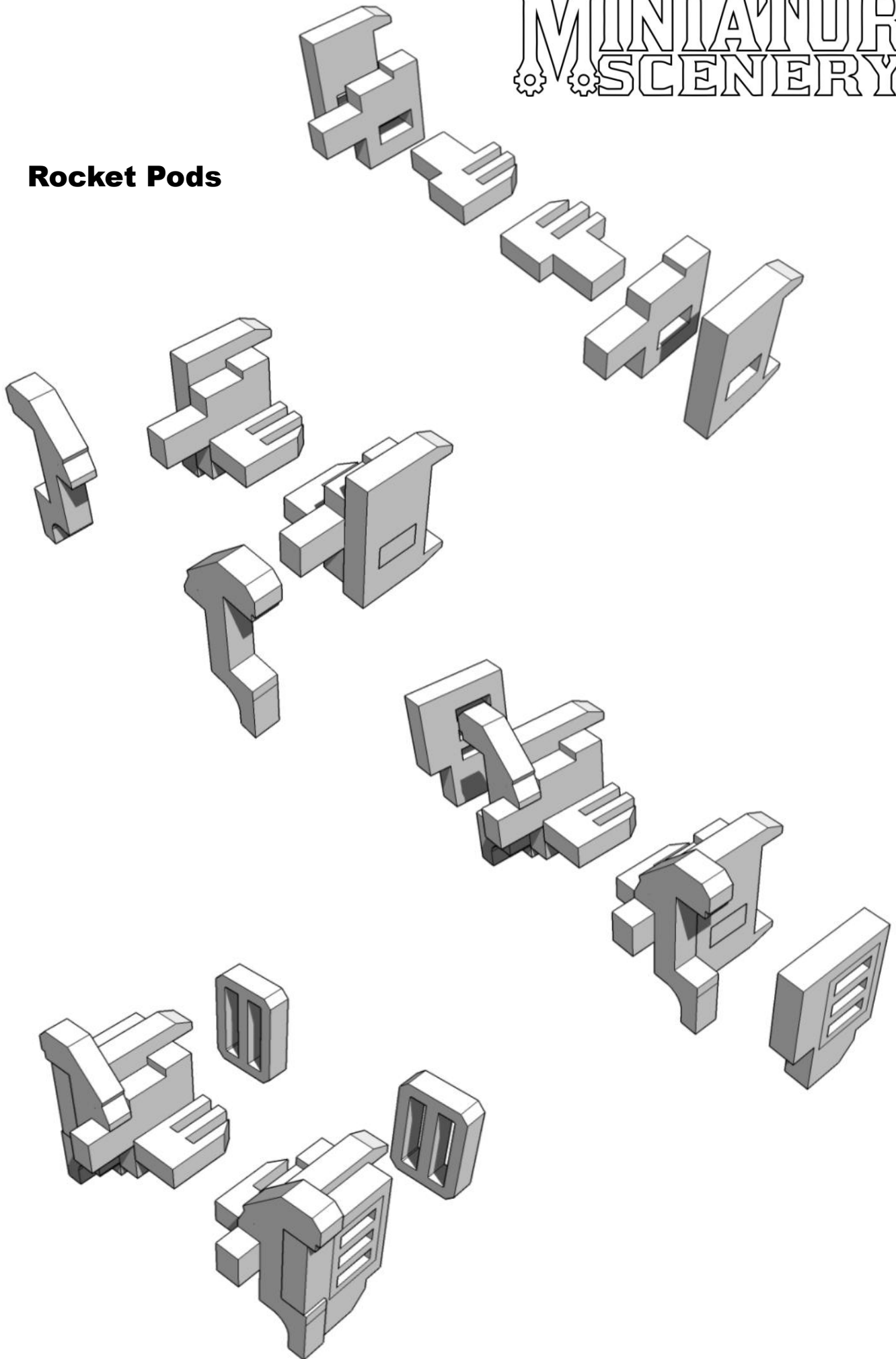
## Machine Guns



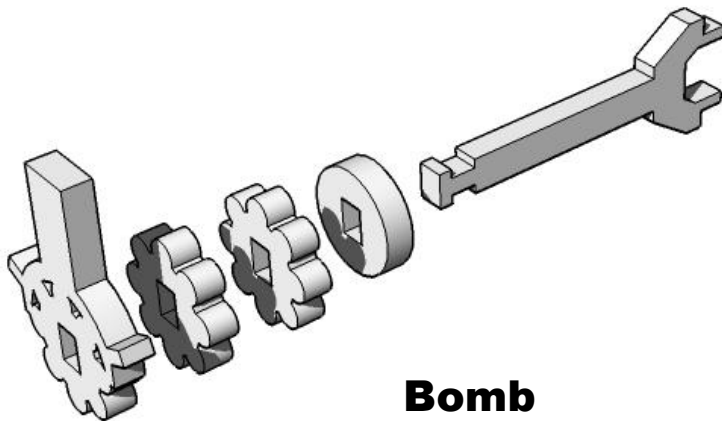
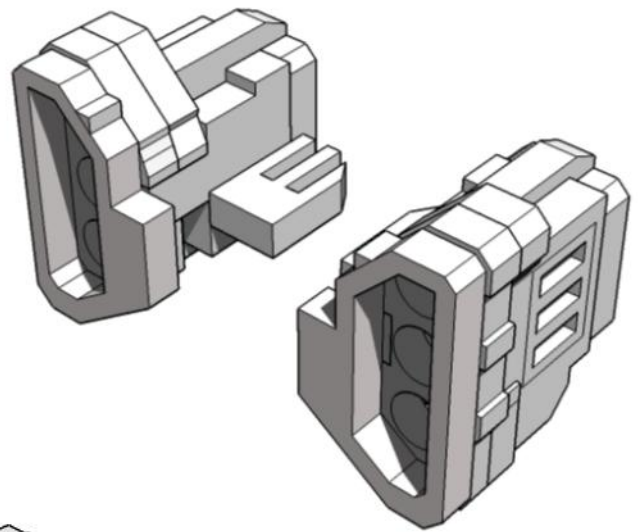
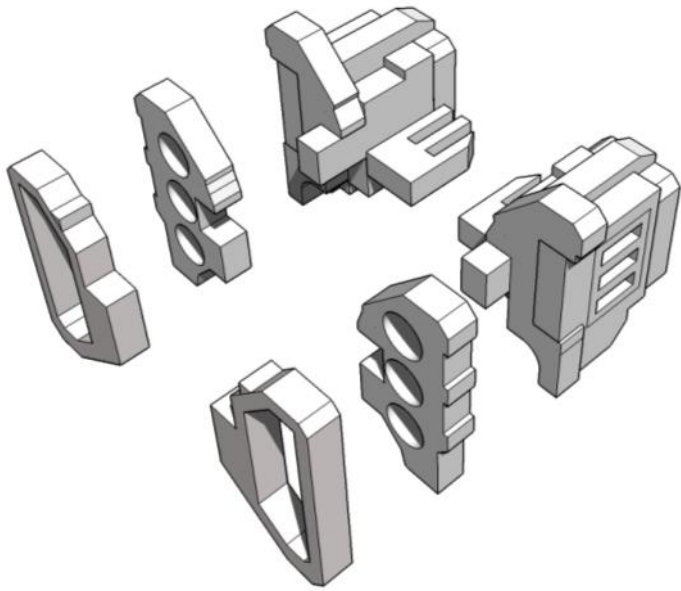


# MINIATURE SCENERY

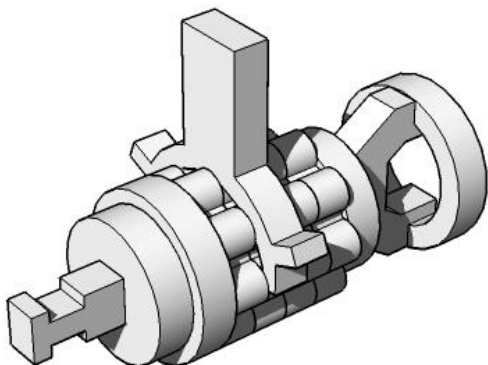
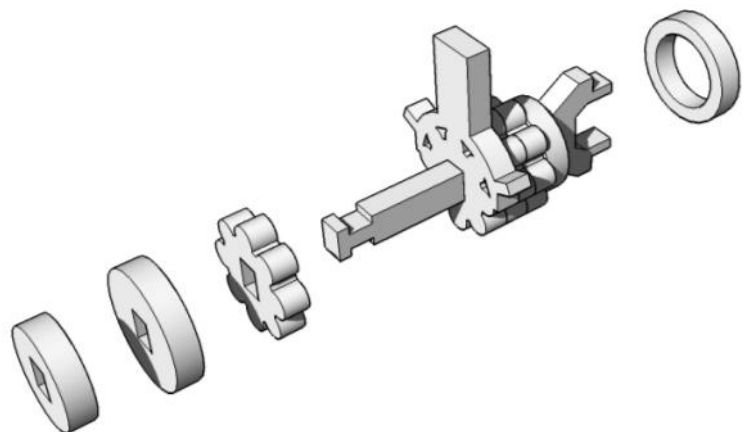
## Rocket Pods



# MINIATURE SCENERY

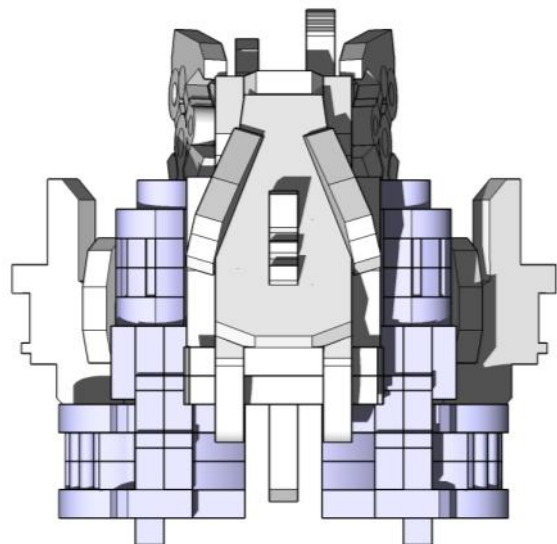
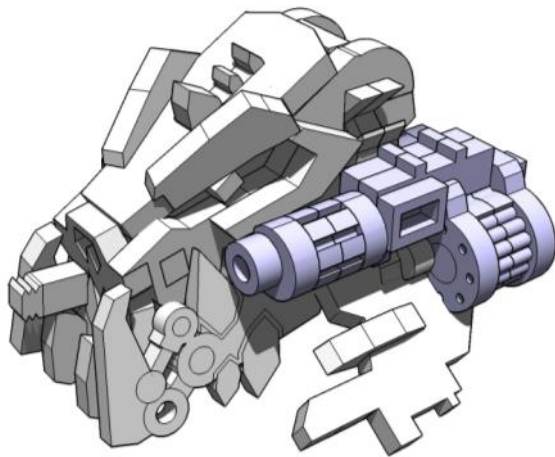
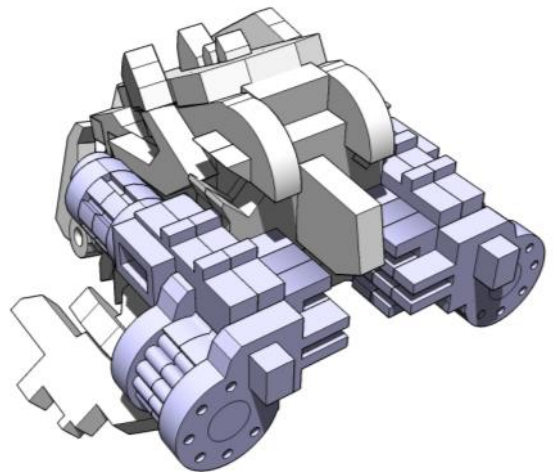
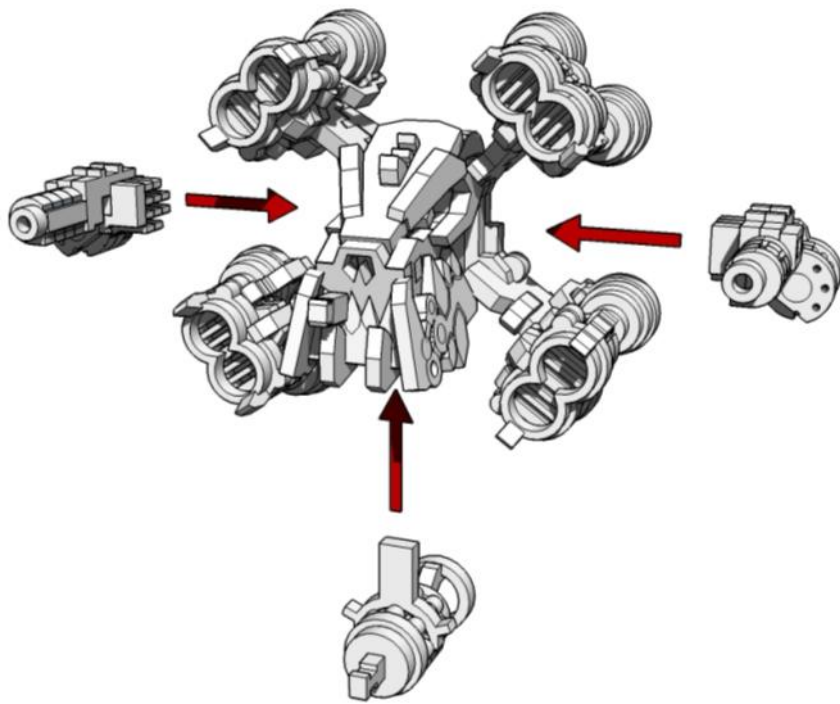


**Bomb**

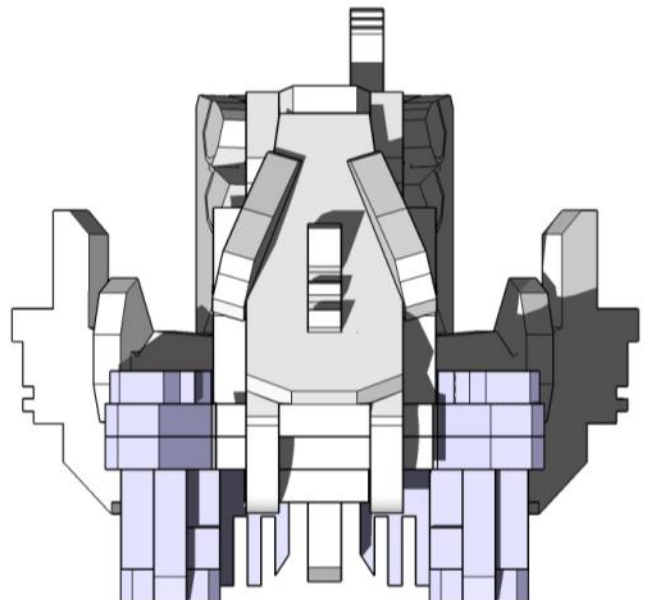
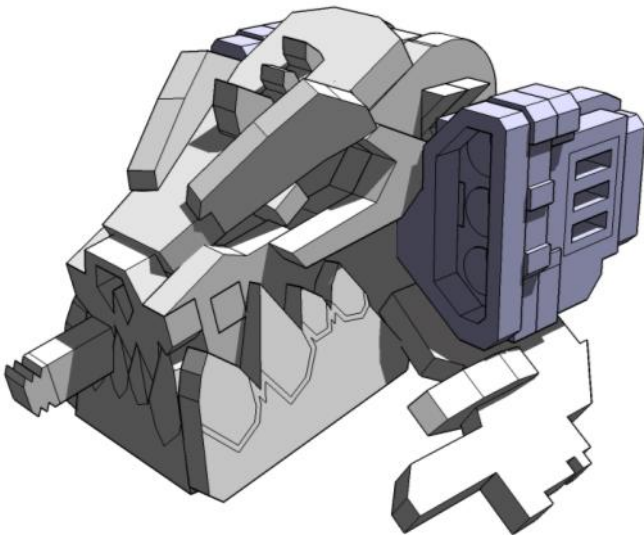
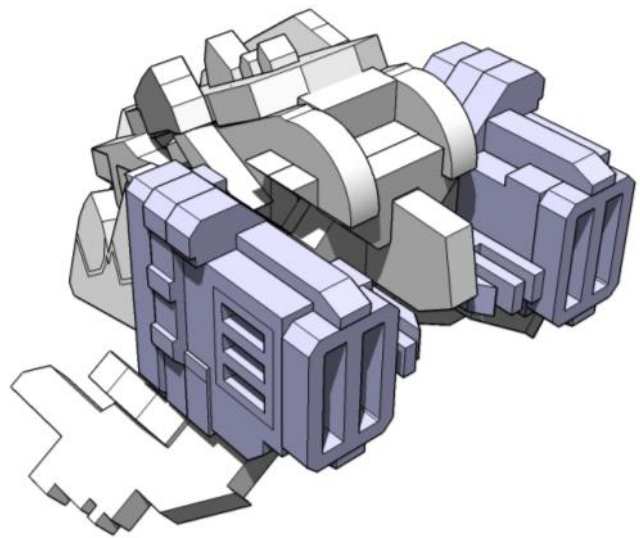
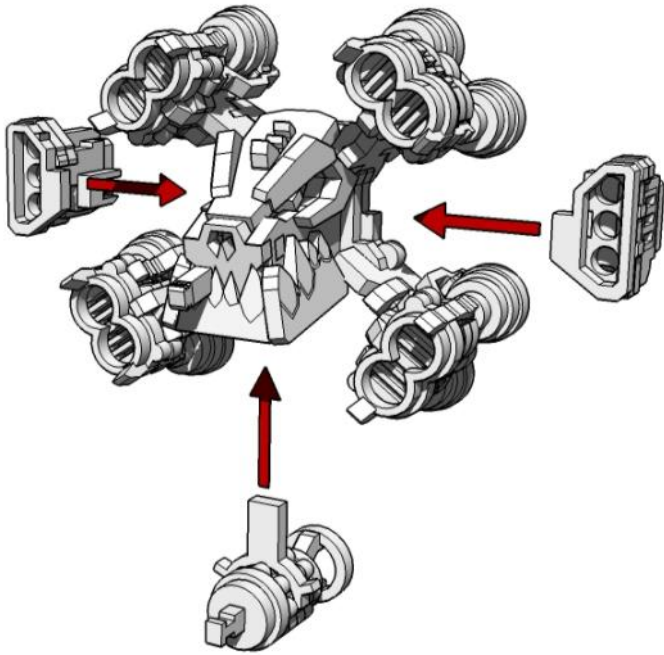




# MINIATURE SCENERY

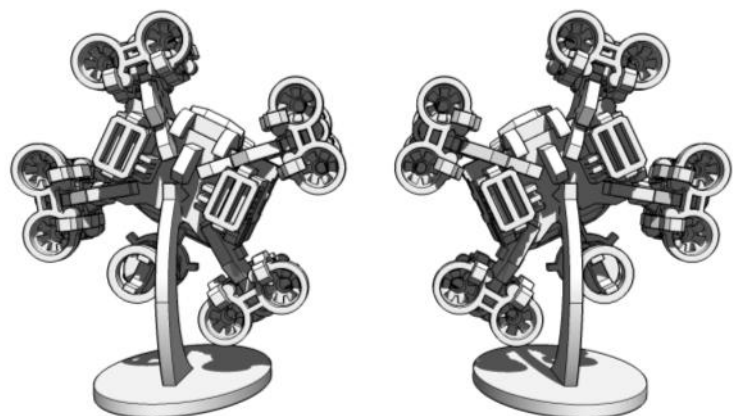
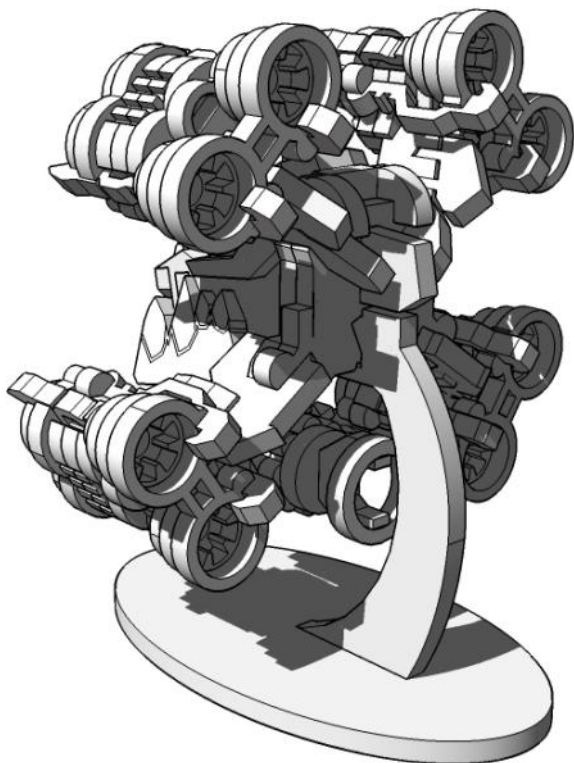
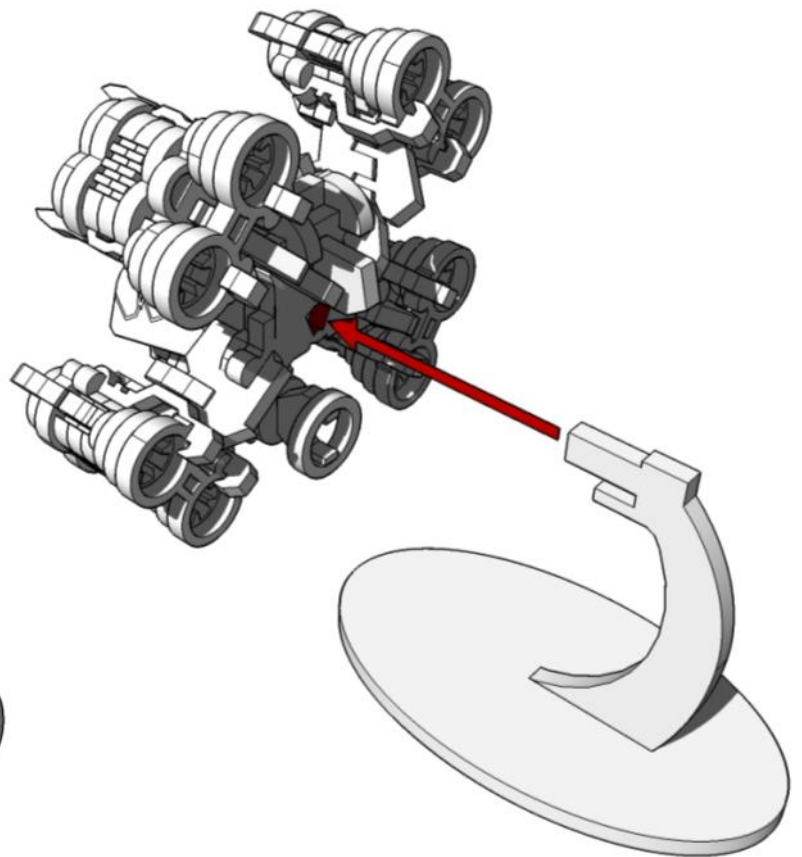
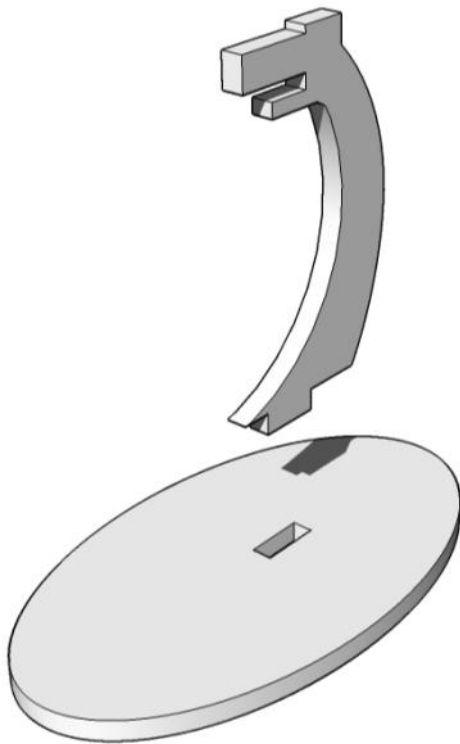


# MINIATURE SCENERY





# MINIATURE SCENERY



# MINIATURE SCENERY

