

CNC WORKSHOP®

# MINIATURE SCENERY



Model supplied unpainted and unassembled

## TACTICAL RESPONSE VEHICLE

MINIATURE SCENERY MODELS ARE DESIGNED FOR 25MM (1 INCH) BASE MINIATURES, IDEAL FOR GAMERS AND COLLECTORS.

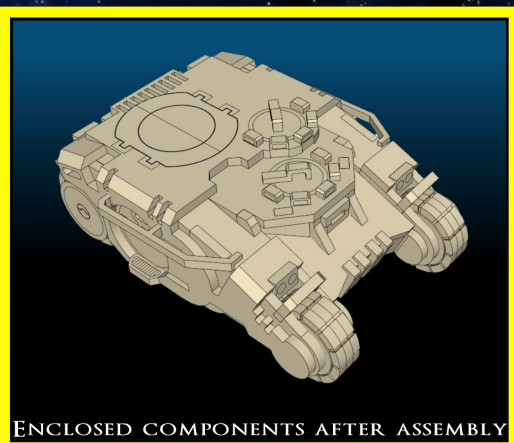
AT [WWW.MINIATURESCENERY.COM](http://WWW.MINIATURESCENERY.COM) WE PROVIDE DETAILED AND EASY TO FOLLOW ILLUSTRATED GUIDES FOR PAINTING TERRAIN.

THE TACTICAL RESPONSE VEHICLE IS A FOUR WHEELED TRANSPORT SUITABLE FOR USE BOTH OFFROAD AND IN CITY STREETS.

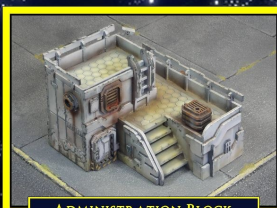
THIS MODEL IS DESIGNED FOR USE AS TERRAIN OR A UNIQUE PLAYING PIECE.

OPTIONAL WEAPONS TURRET INCLUDED

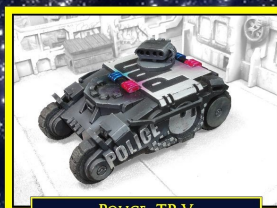
ALL INSTRUCTIONS AVAILABLE ONLINE AT [HTTP://WWW.MINIATURESCENERY.COM](http://WWW.MINIATURESCENERY.COM)



ENCLOSED COMPONENTS AFTER ASSEMBLY



ADMINISTRATION BLOCK



POLICE TRV



HUMPTY TRUCK



STREET SCENERY 1



Contents may contain small parts. Not suitable for children under 6 years of age

The exclusive copyright on the model designs and components within this case is the property of CNC Workshop Ltd. (c) Copyright CNC Workshop Ltd., 2004. All rights reserved



# MINIATURE SCENERY

## Preparation

Once you clear some table space you will need a hobby knife and glue (PVA, wood glue, hobby glue) and a file or small piece of sandpaper to be used for cleaning up any tiny imperfections.

It's a good idea to familiarise yourself with how the pieces fit together before gluing.

## Getting Started

I. Parts should remove easily from the board by pressing through and popping them out. It's a good idea to cut through the tiny joins first though, and some parts (particularly smaller, more detailed parts) may need more careful persuasion.

II. Use a file or sand paper last to completely remove the tabs that might remain.

III. Parts may be a very tight fit, slight trimming or sanding of parts may be needed for ease of assembly.

## INSTRUCTIONS

### Tactical Response Vehicle

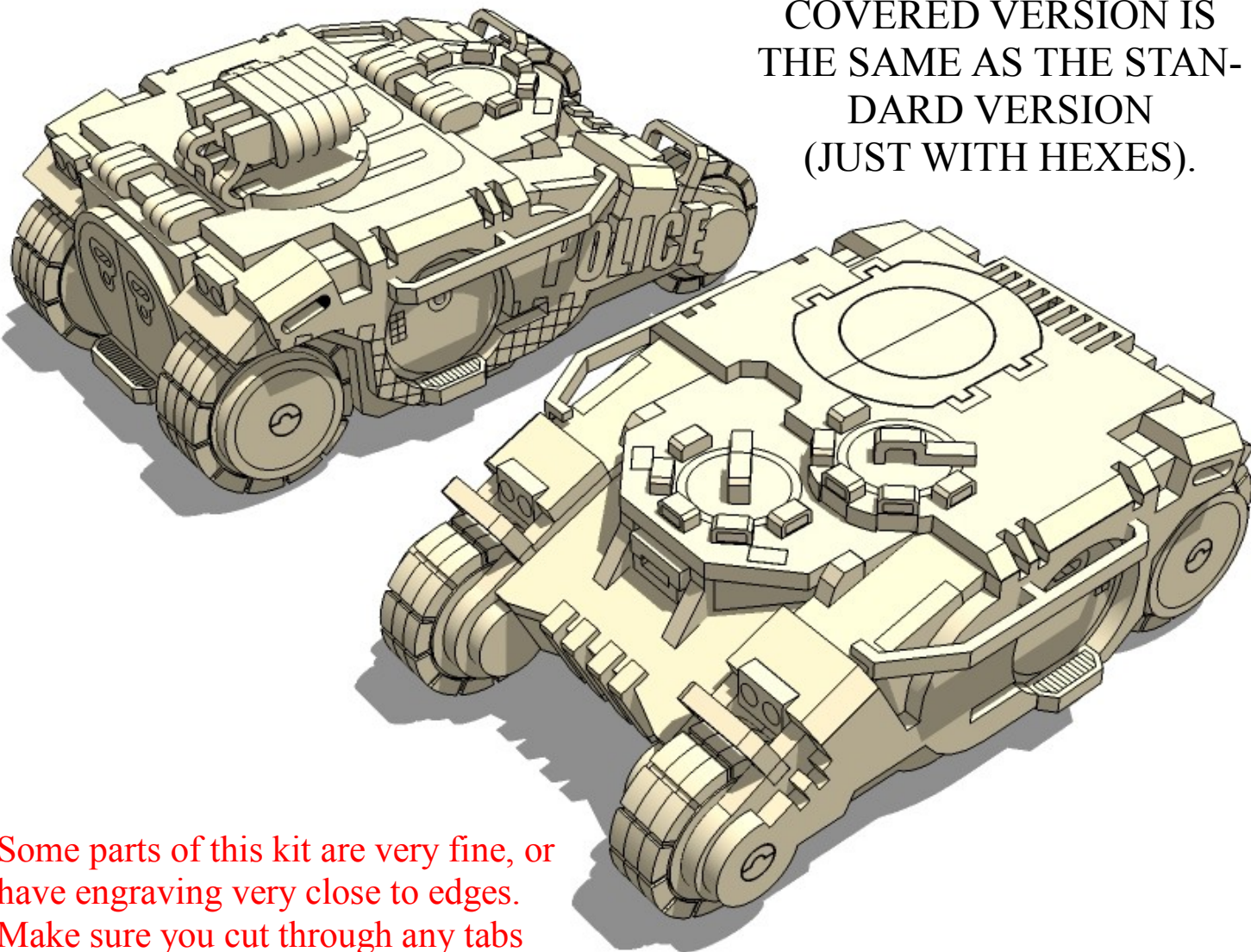
(also police and Hex  
version)

## Construction

Slot the parts together as shown by the pictures below, applying glue wherever there is a connection.

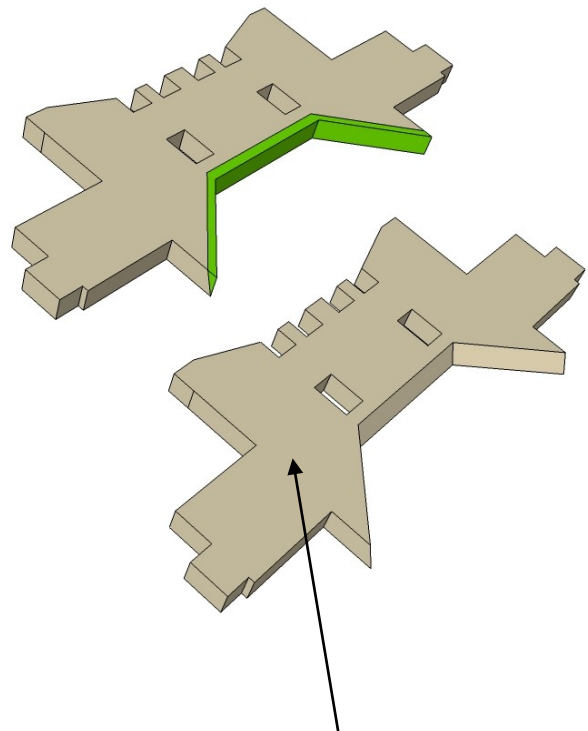
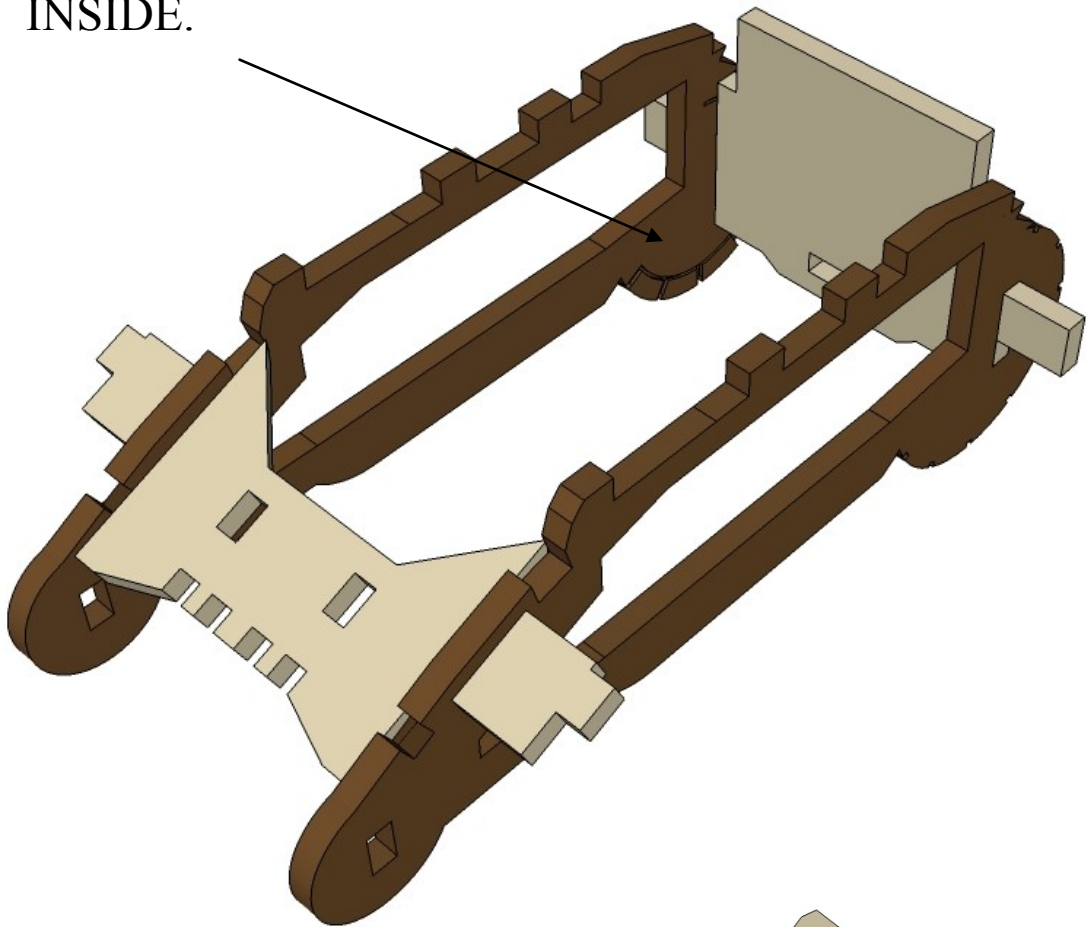
Allow the model to completely dry before painting it. This is a complex kit with many small parts. Allowing each section to dry thoroughly before heading to the next is strongly recommended.

NOTE THAT THE HEX  
COVERED VERSION IS  
THE SAME AS THE STAND-  
DARD VERSION  
(JUST WITH HEXES).



Some parts of this kit are very fine, or have engraving very close to edges. Make sure you cut through any tabs carefully with a hobby knife first to avoid damage.

NOTE: Engraving to the  
INSIDE.

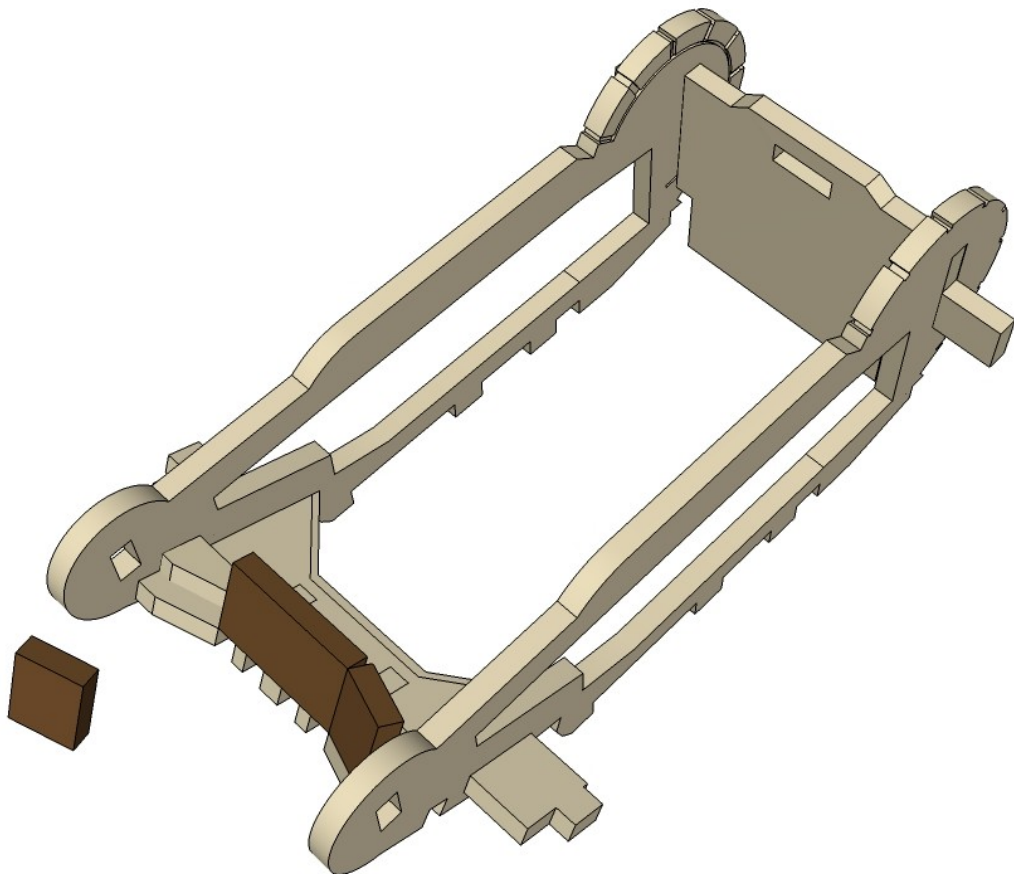
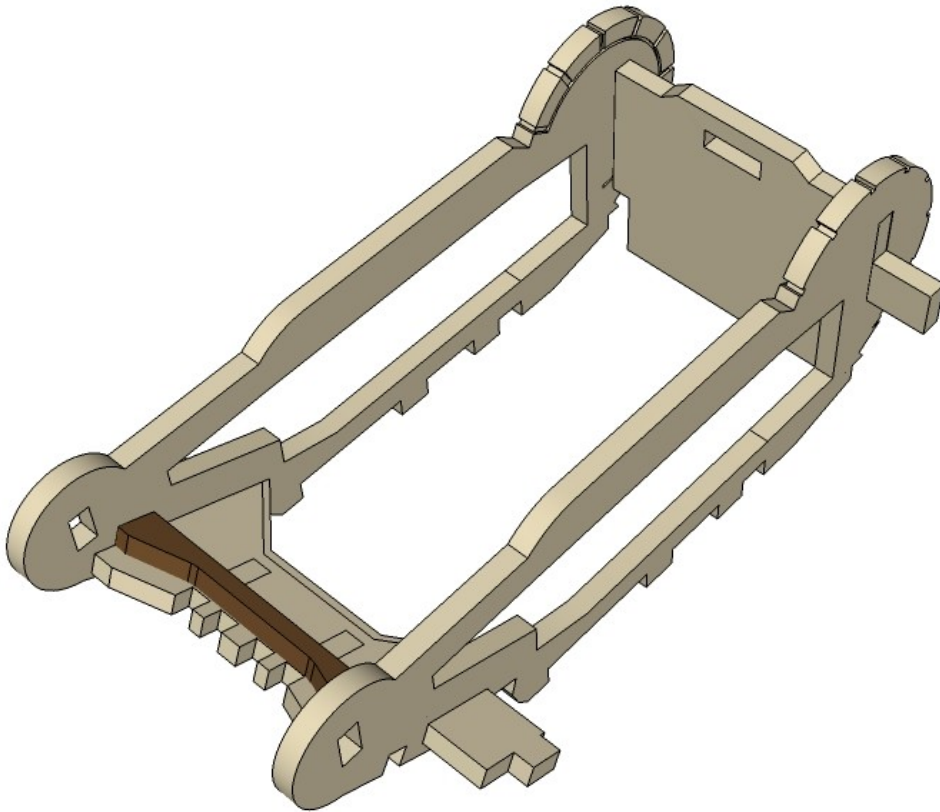


Chamfer the underside of this  
part back to the engraved line.  
The Hex version doesn't have  
the line. Draw one about 1.5mm  
in from the edge. This is so the  
windows will fit properly and can  
be easily done with  
a sharp knife.

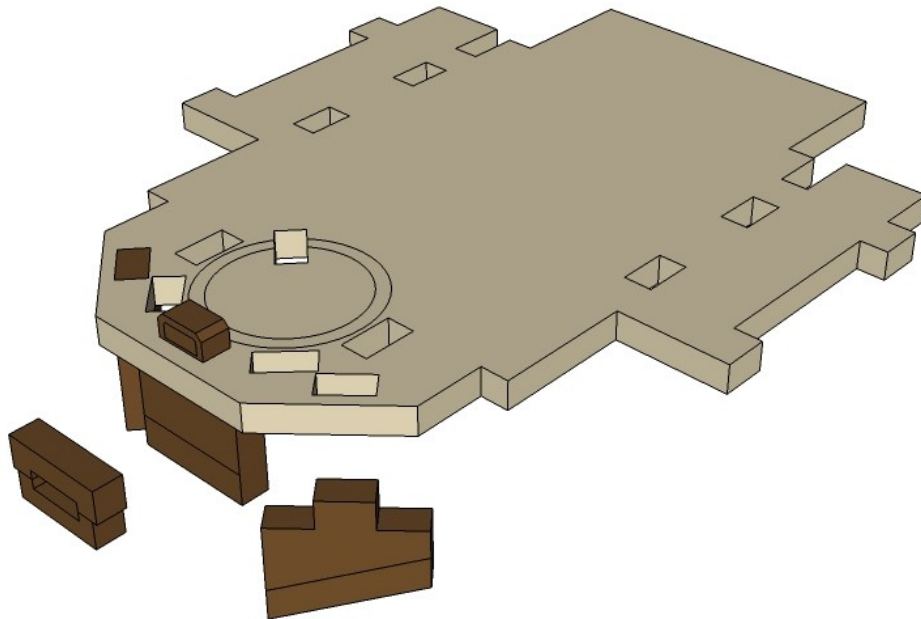
**UNDERSIDE!!!**

CNC WORKSHOP

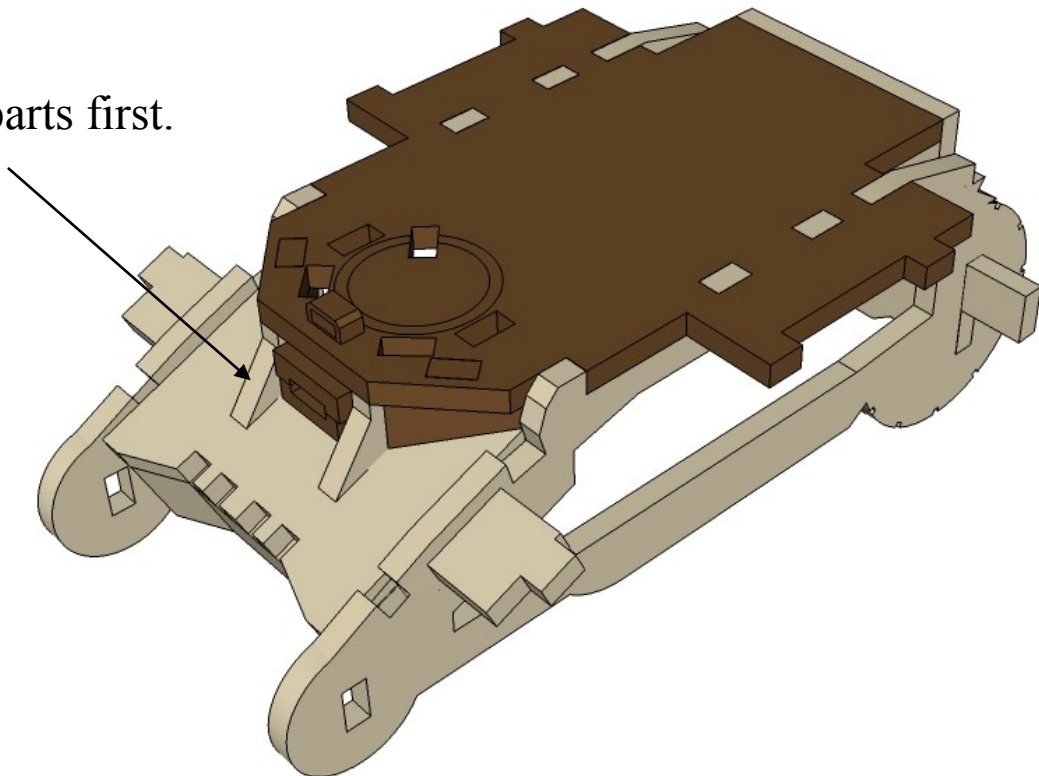
# MINIATURE SCENERY

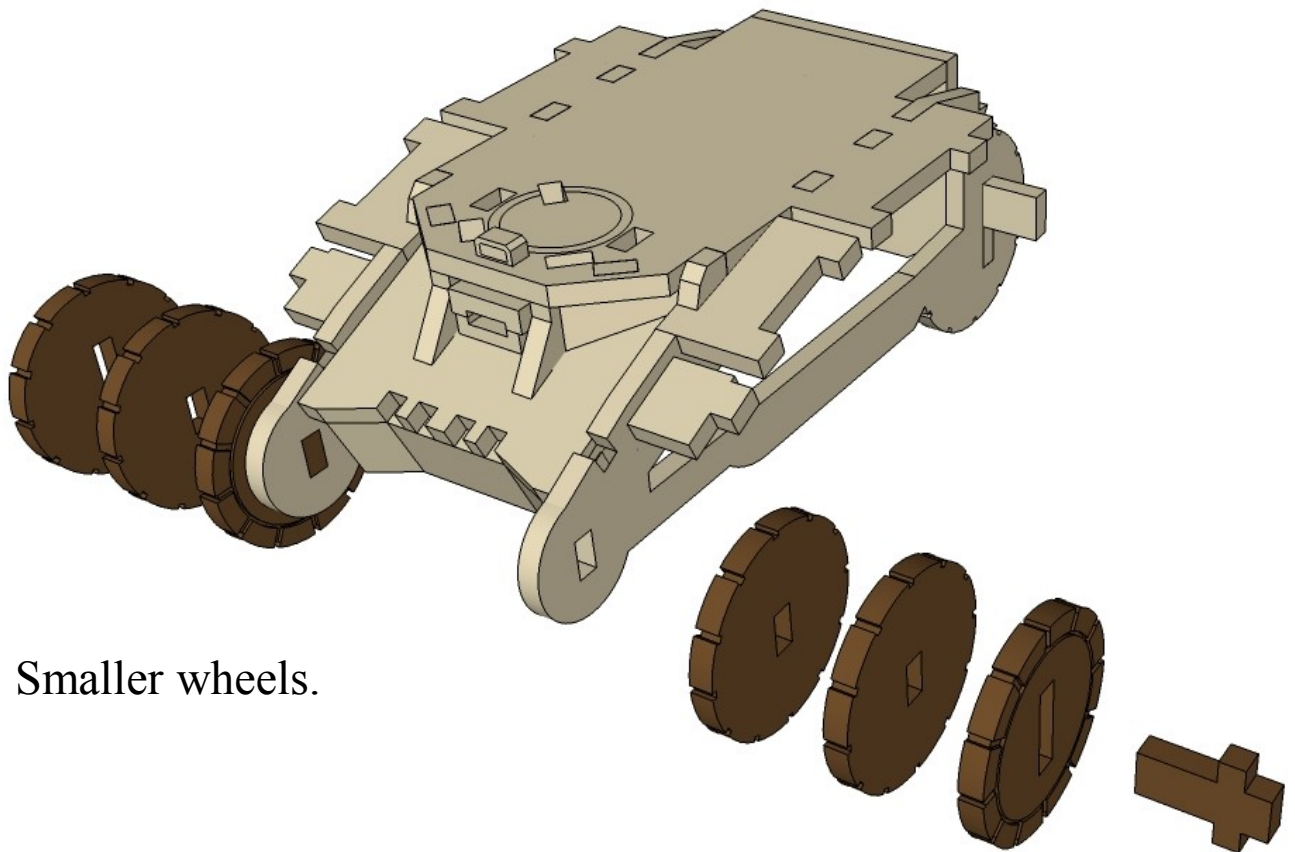
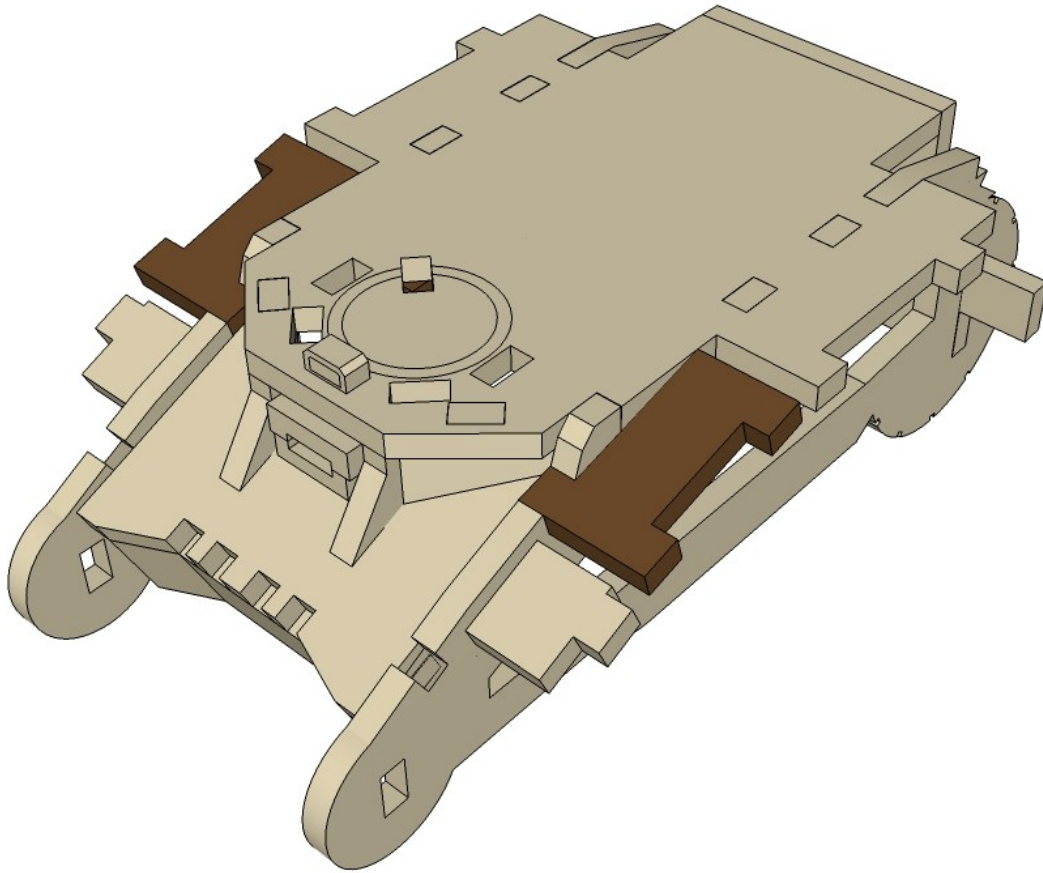






Fit these parts first.

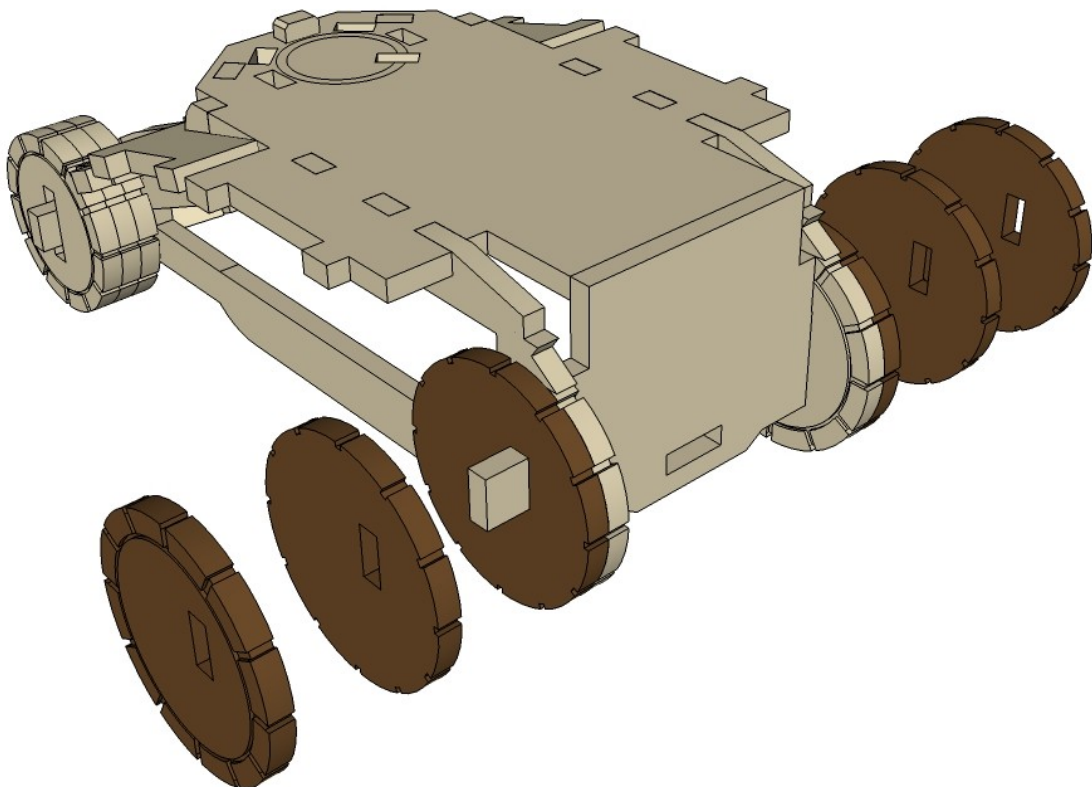
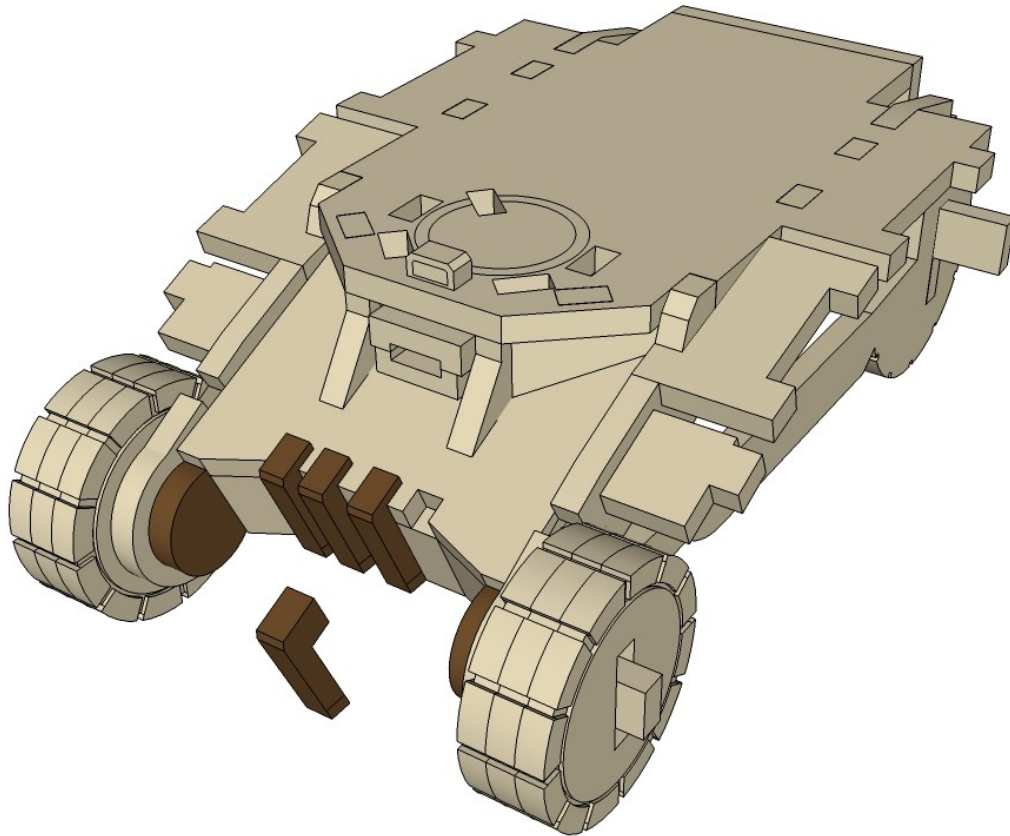




Smaller wheels.

CNC WORKSHOP

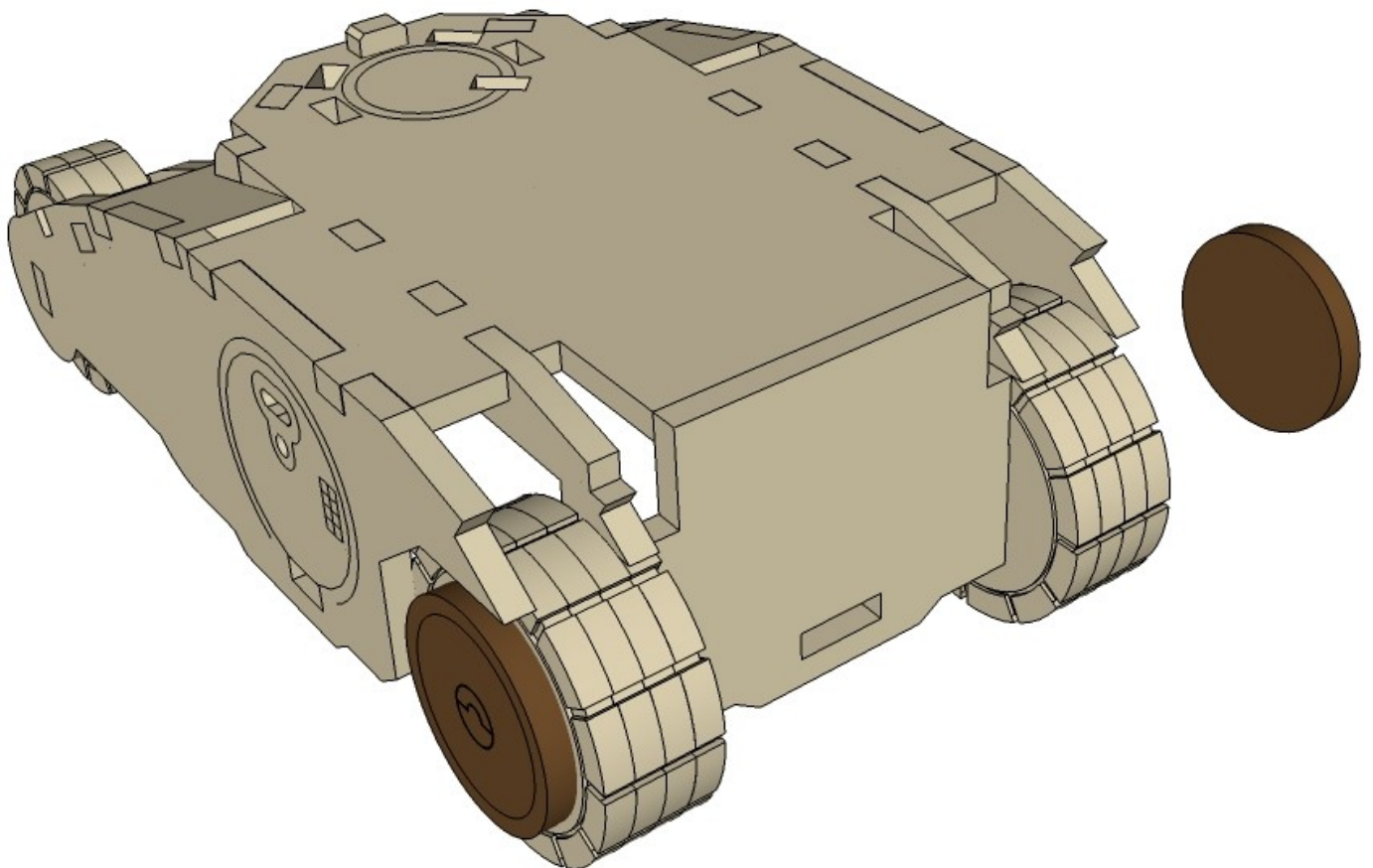
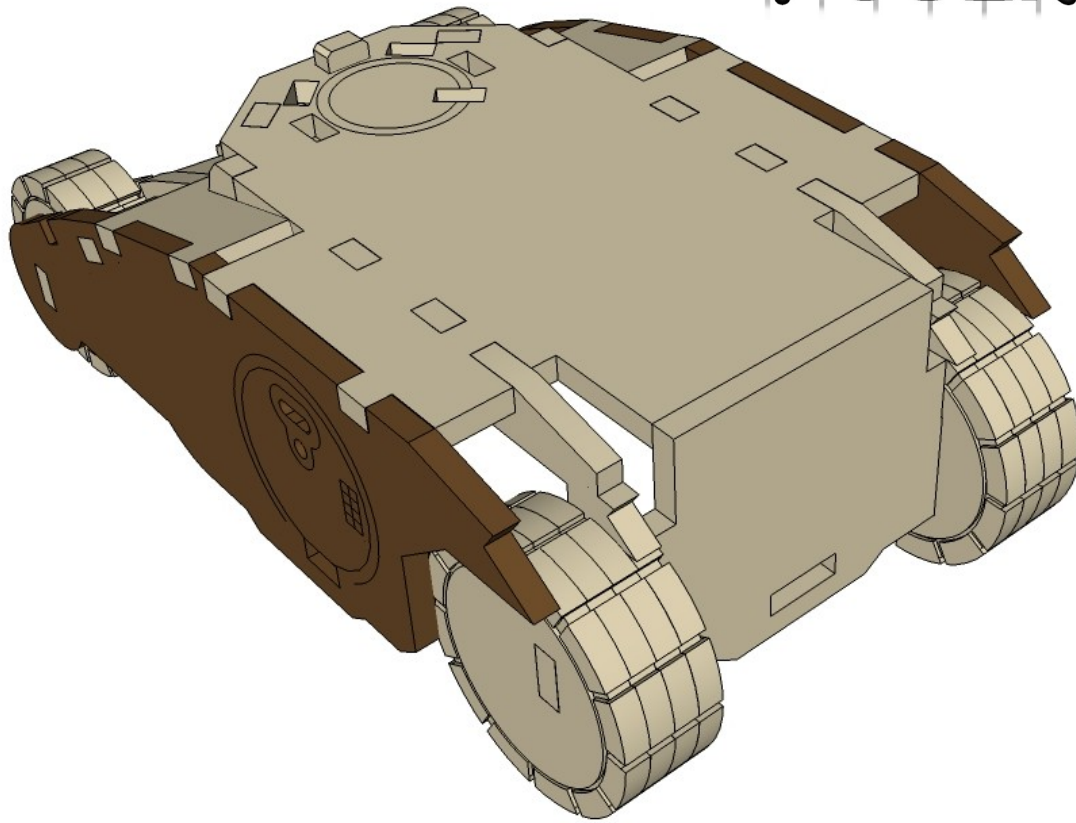
# MINIATURE SCENERY



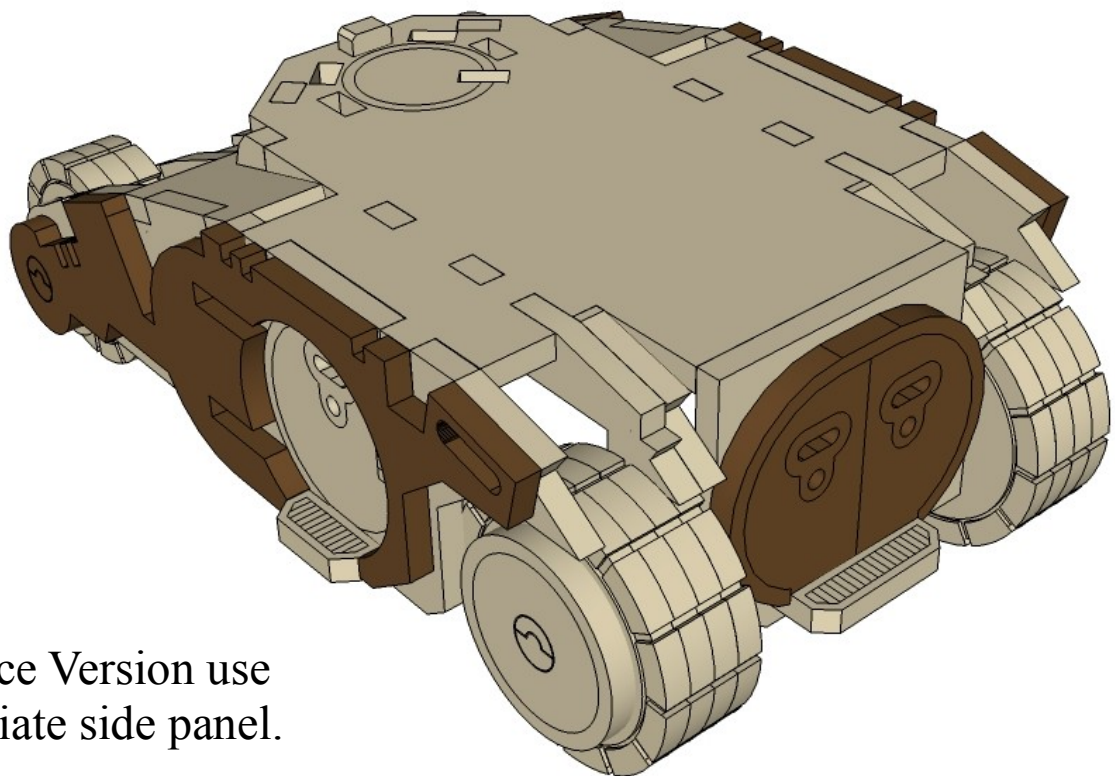
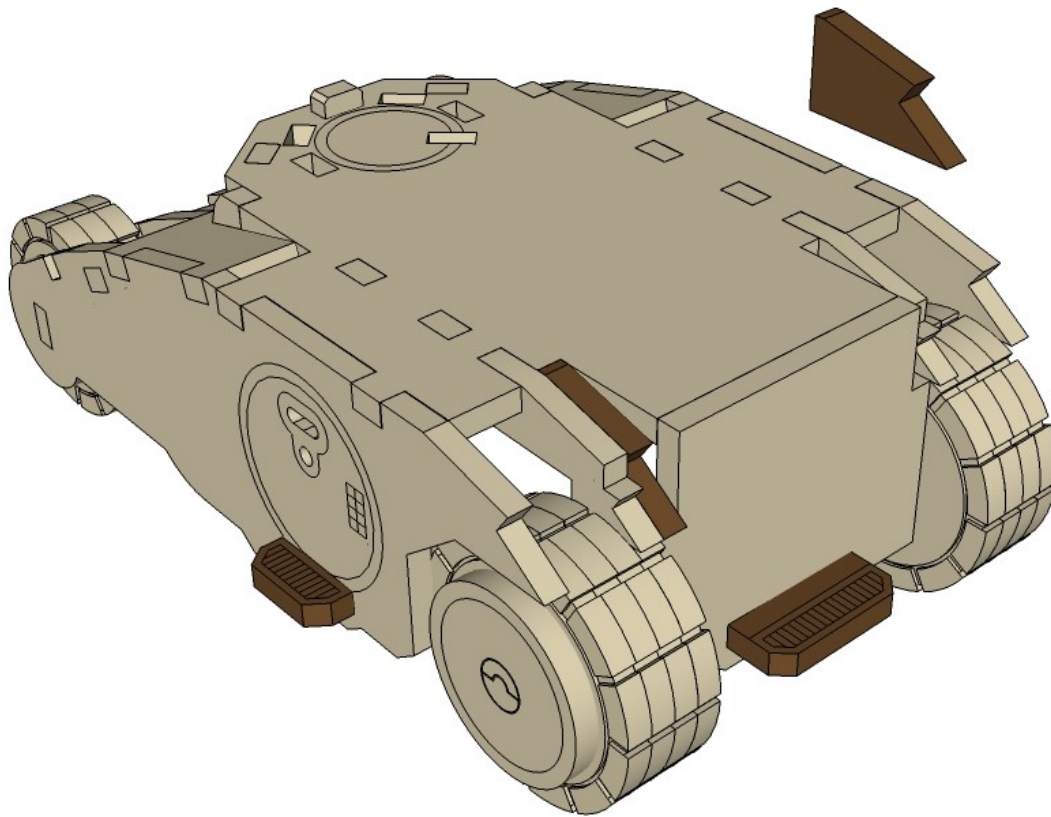


CNC WORKSHOP

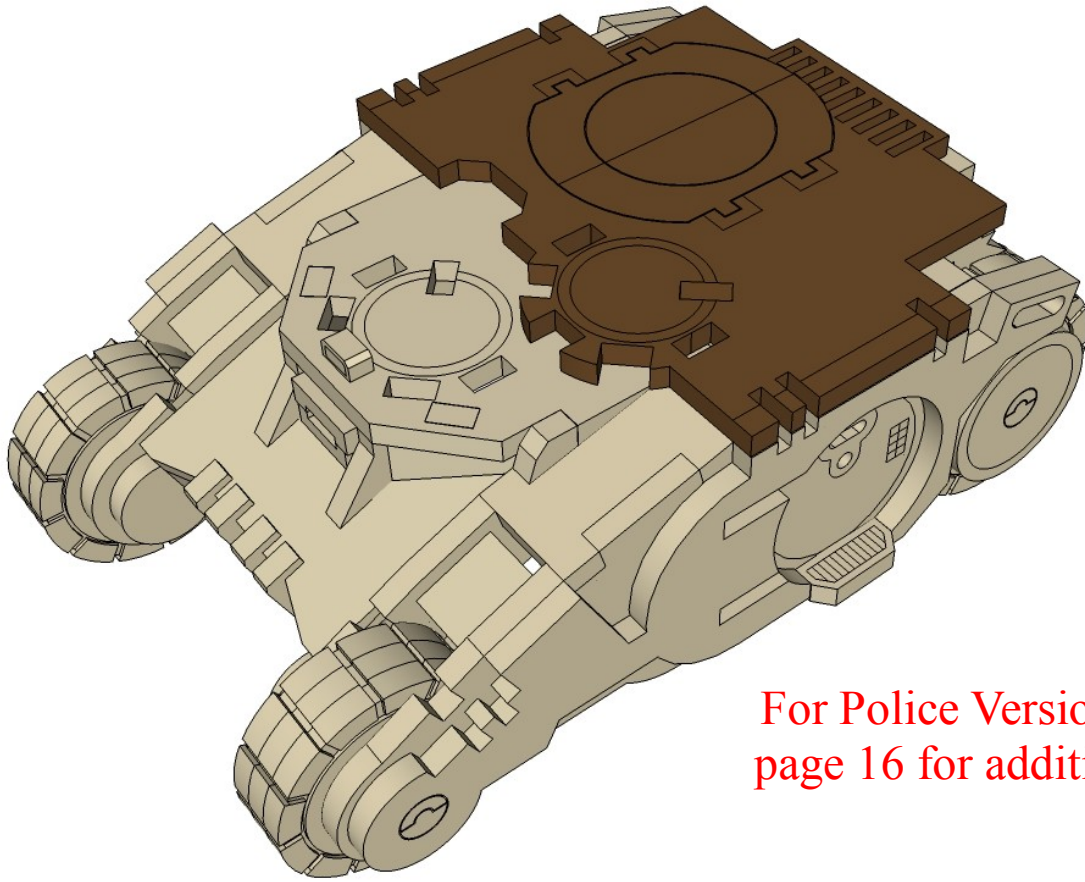
# MINIATURE SCENERY



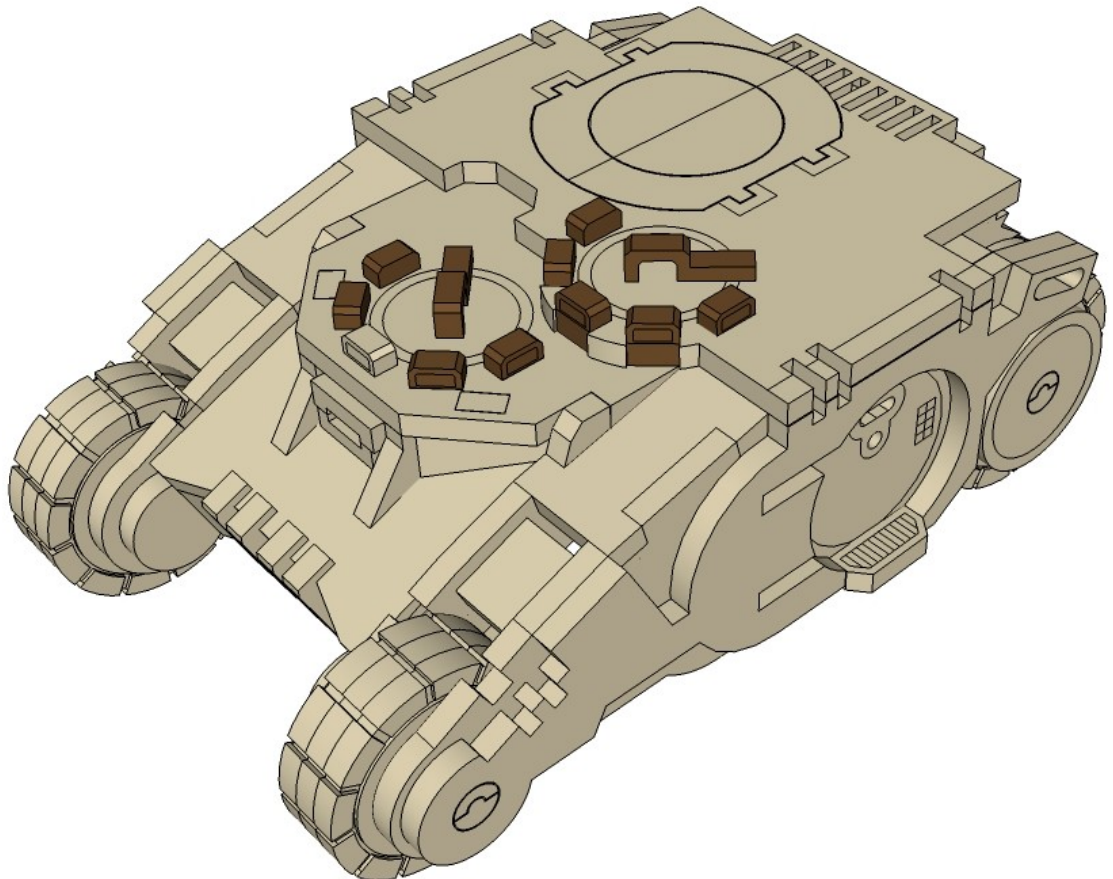




For Police Version use  
Appropriate side panel.



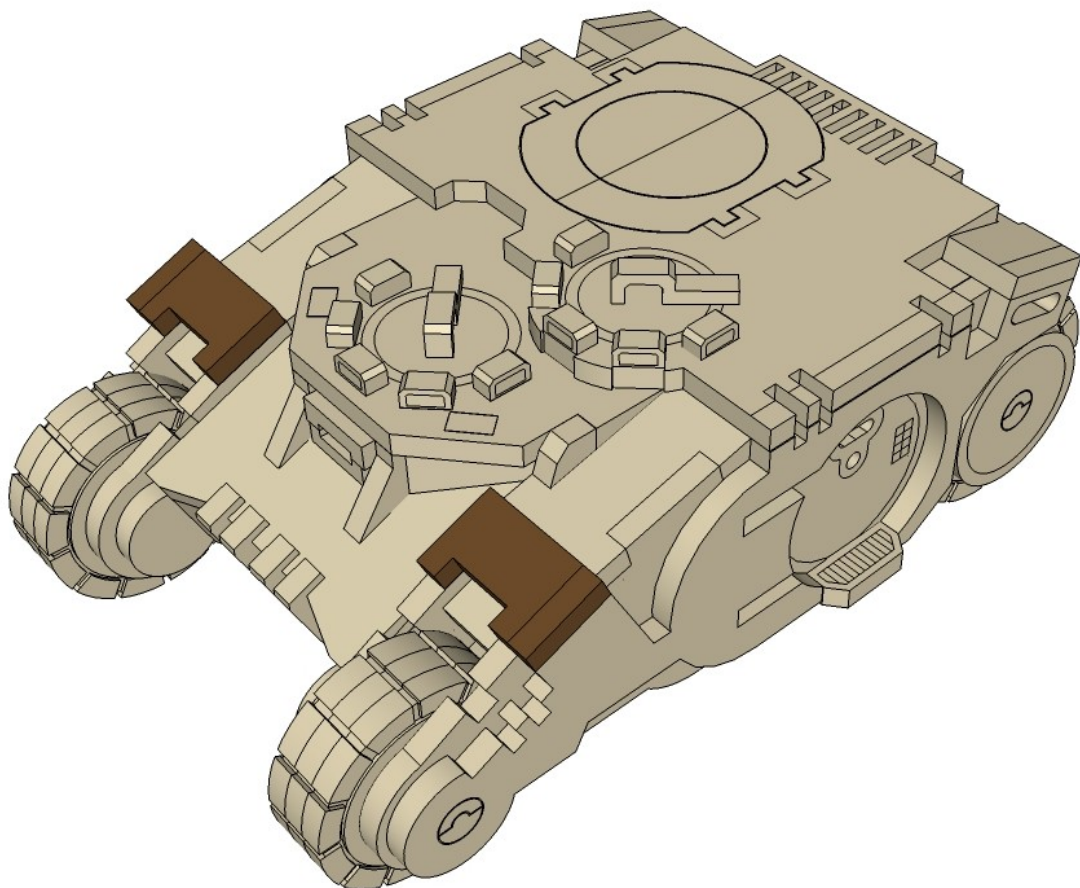
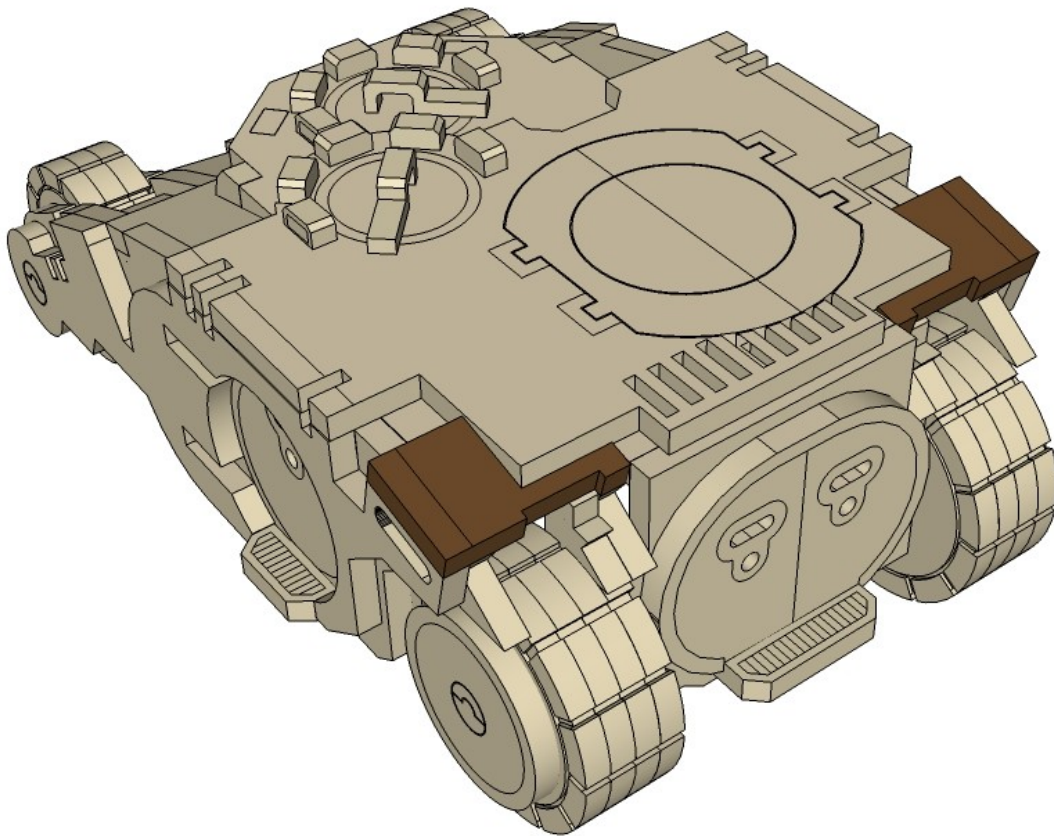
For Police Version, skip to  
page 16 for additional info.

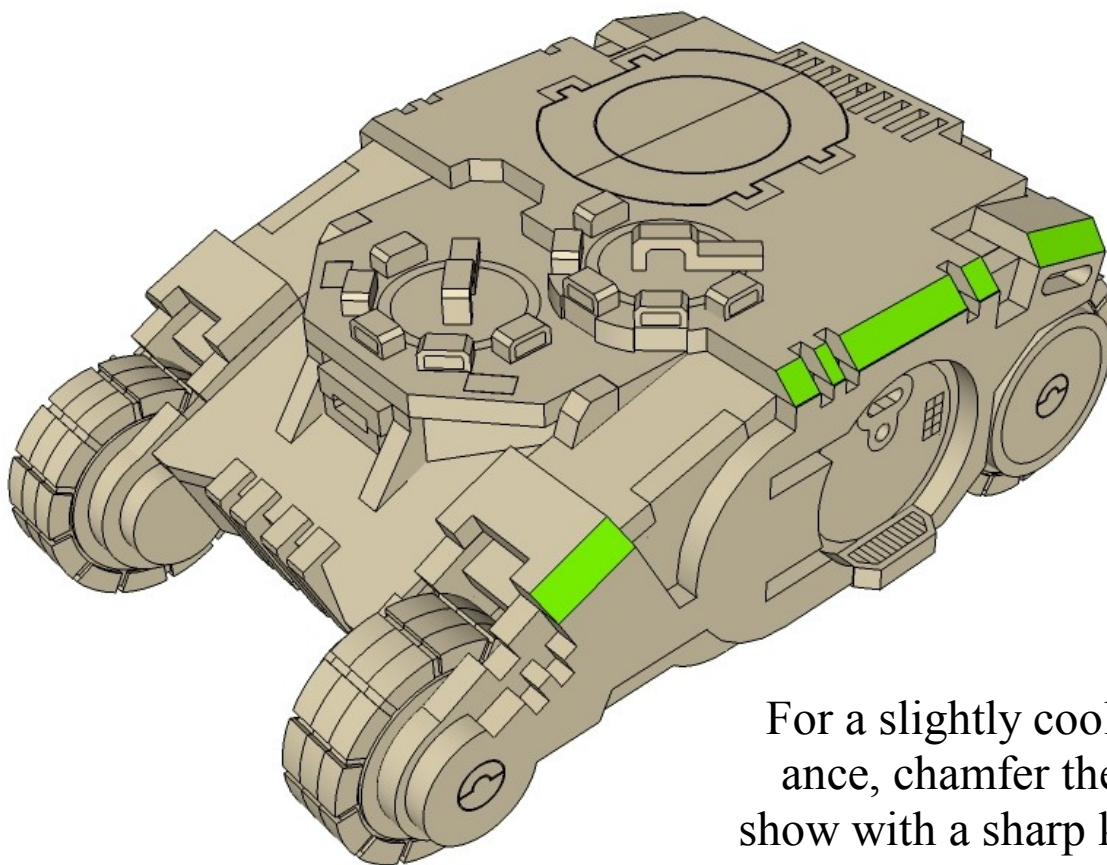




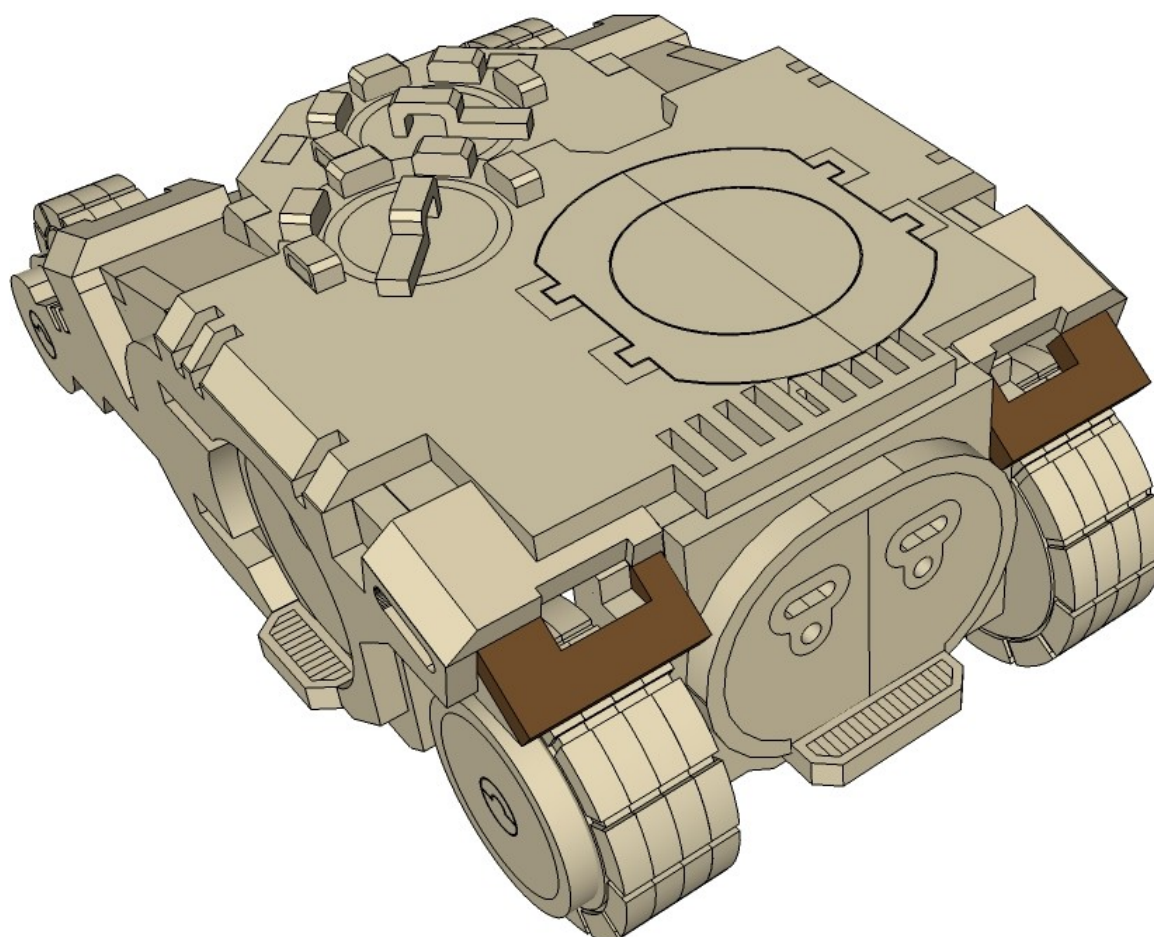
CNC WORKSHOP

# MINIATURE SCENERY

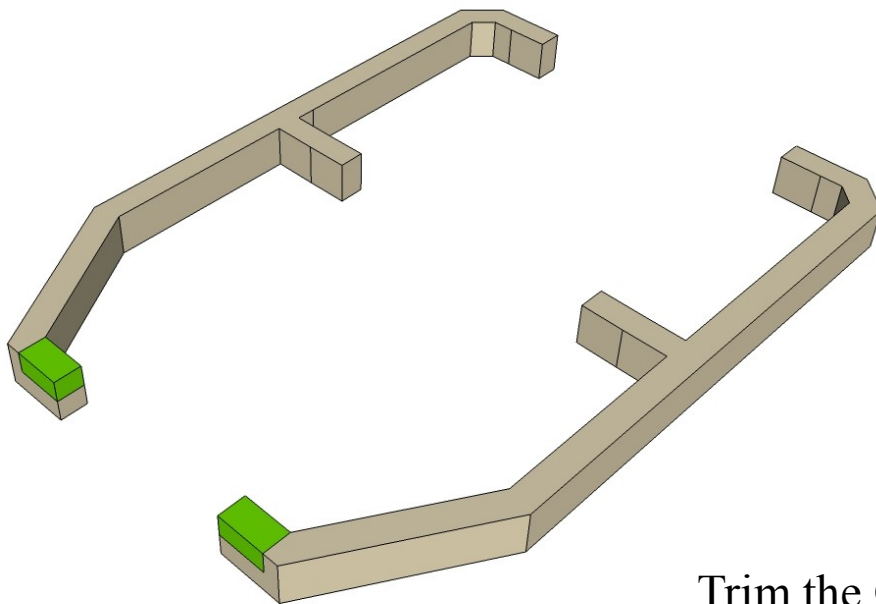
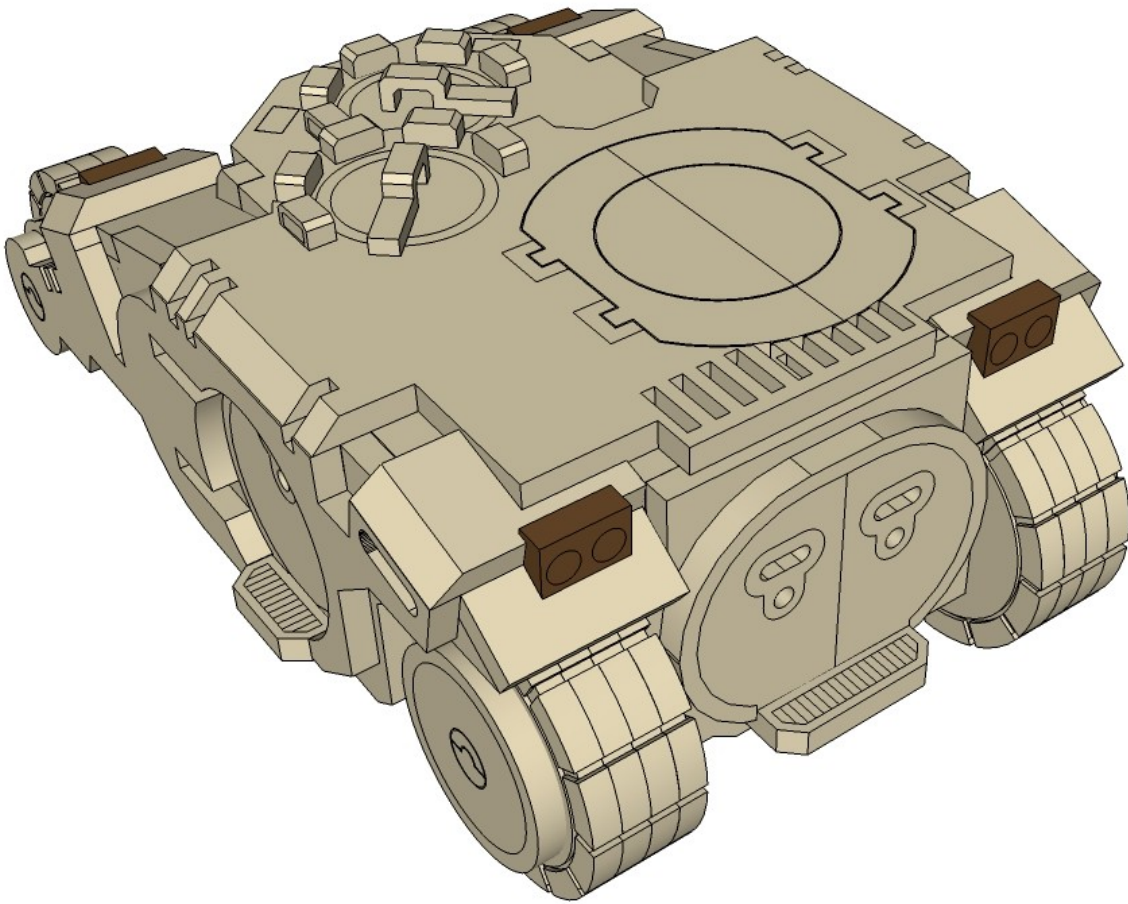




For a slightly cooler appearance, chamfer the edges as show with a sharp knife or file.



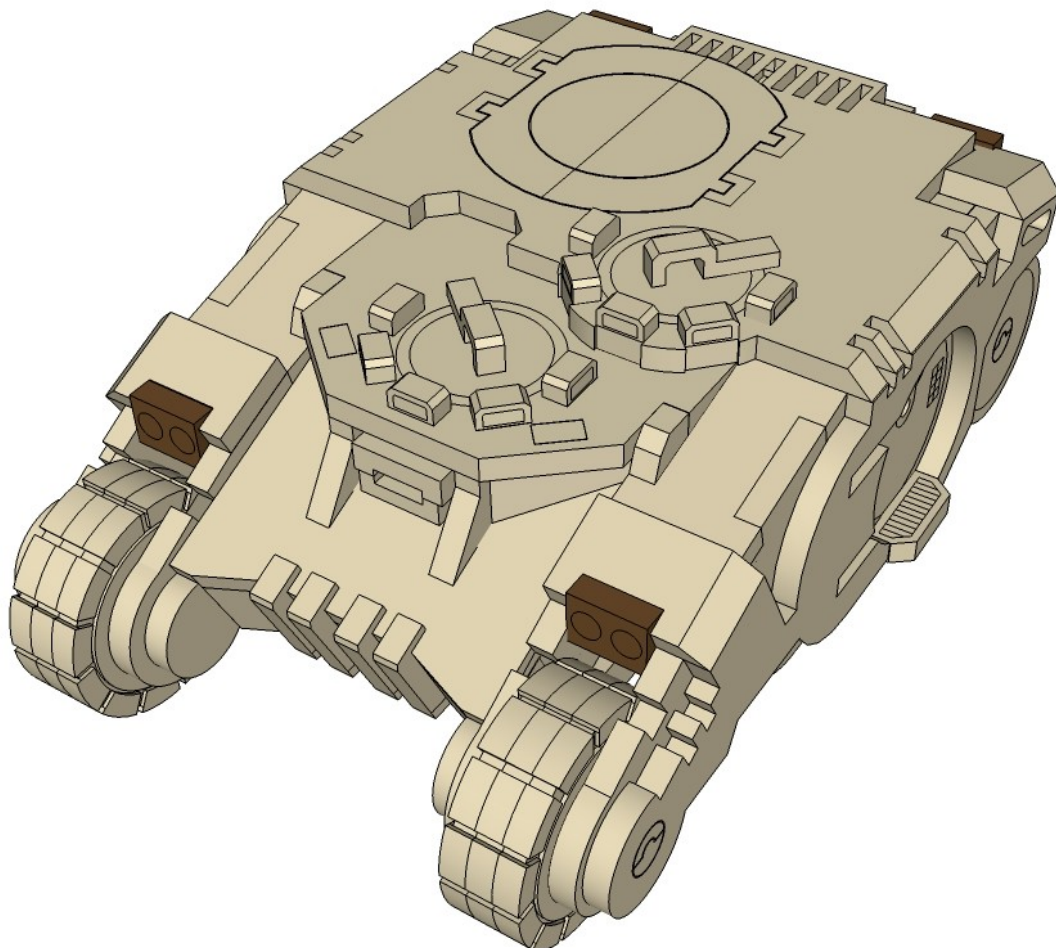
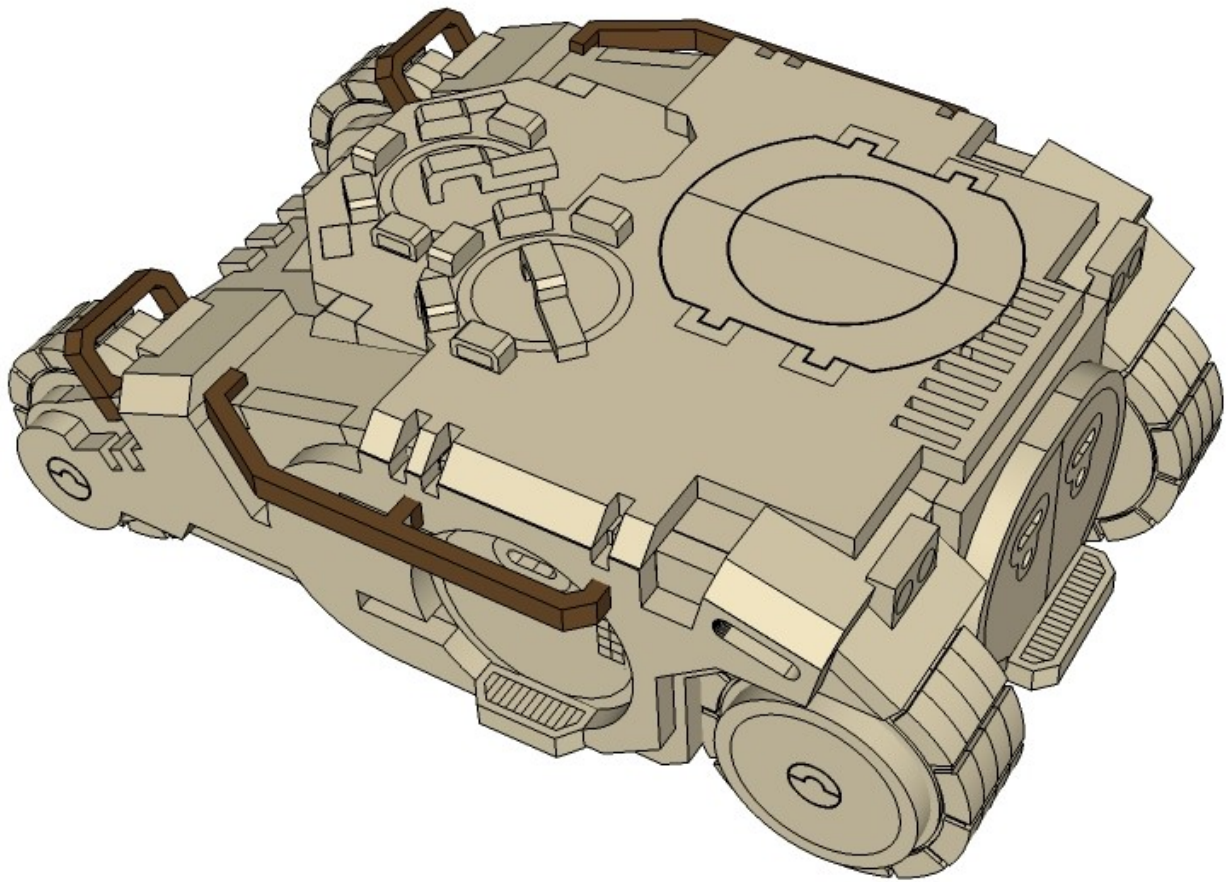




Trim the Grab Rails as shown for a better fit.

CNC WORKSHOP

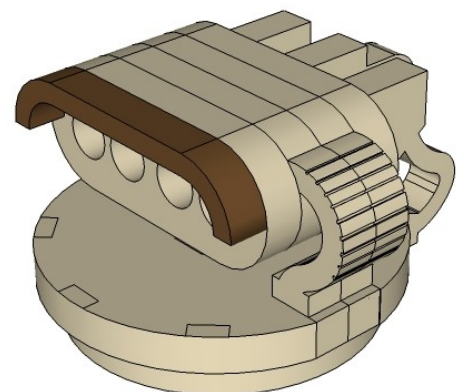
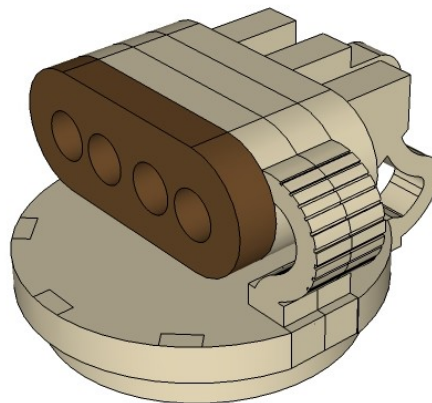
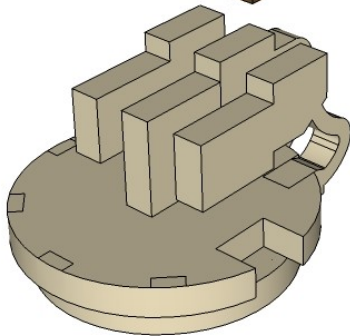
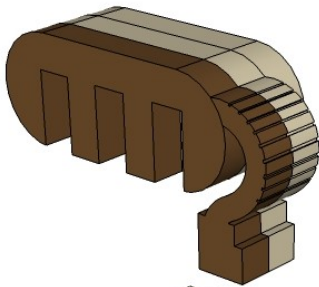
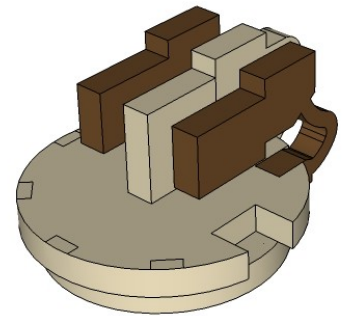
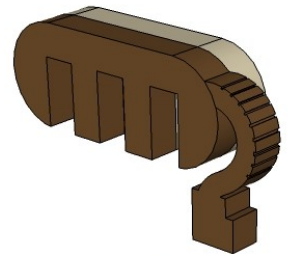
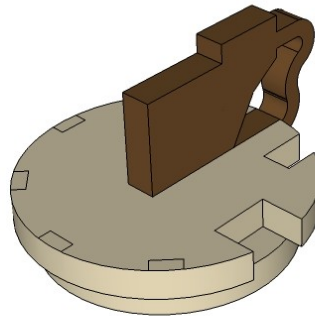
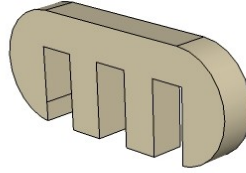
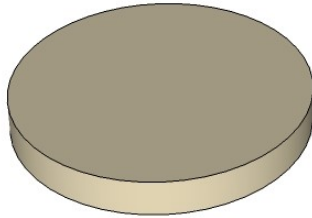
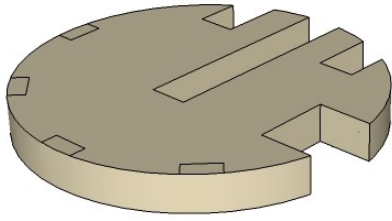
# MINIATURE SCENERY

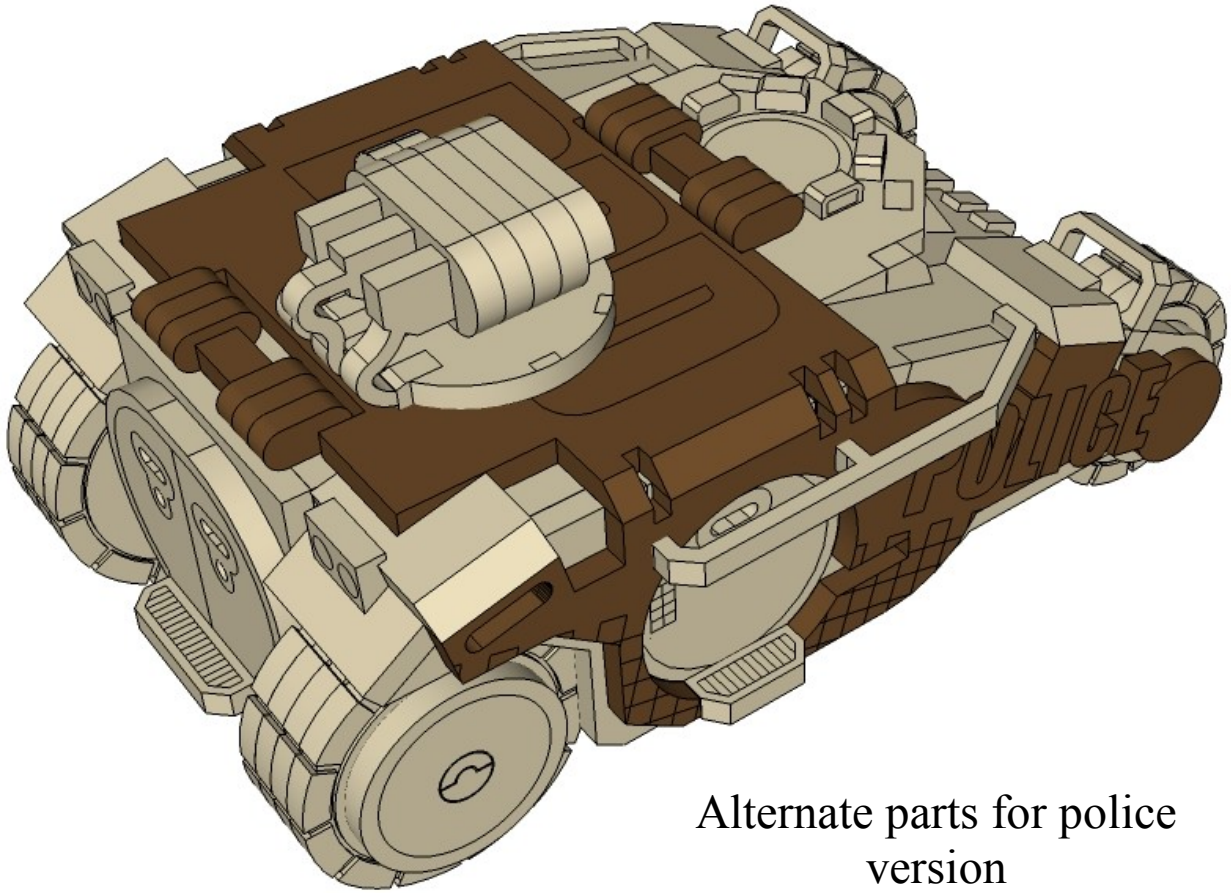




CNC WORKSHOP

# MINIATURE SCENERY





Alternate parts for police  
version