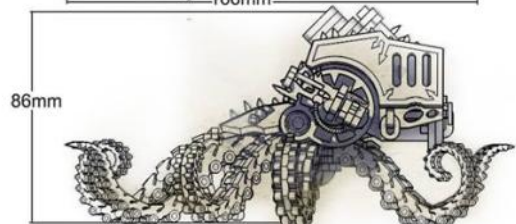
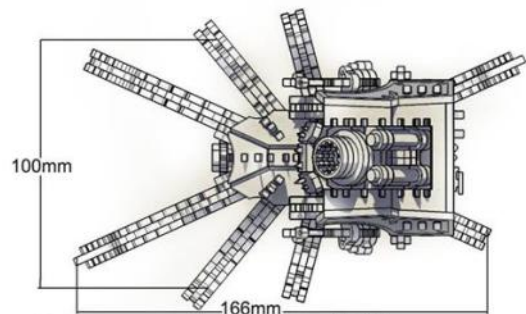
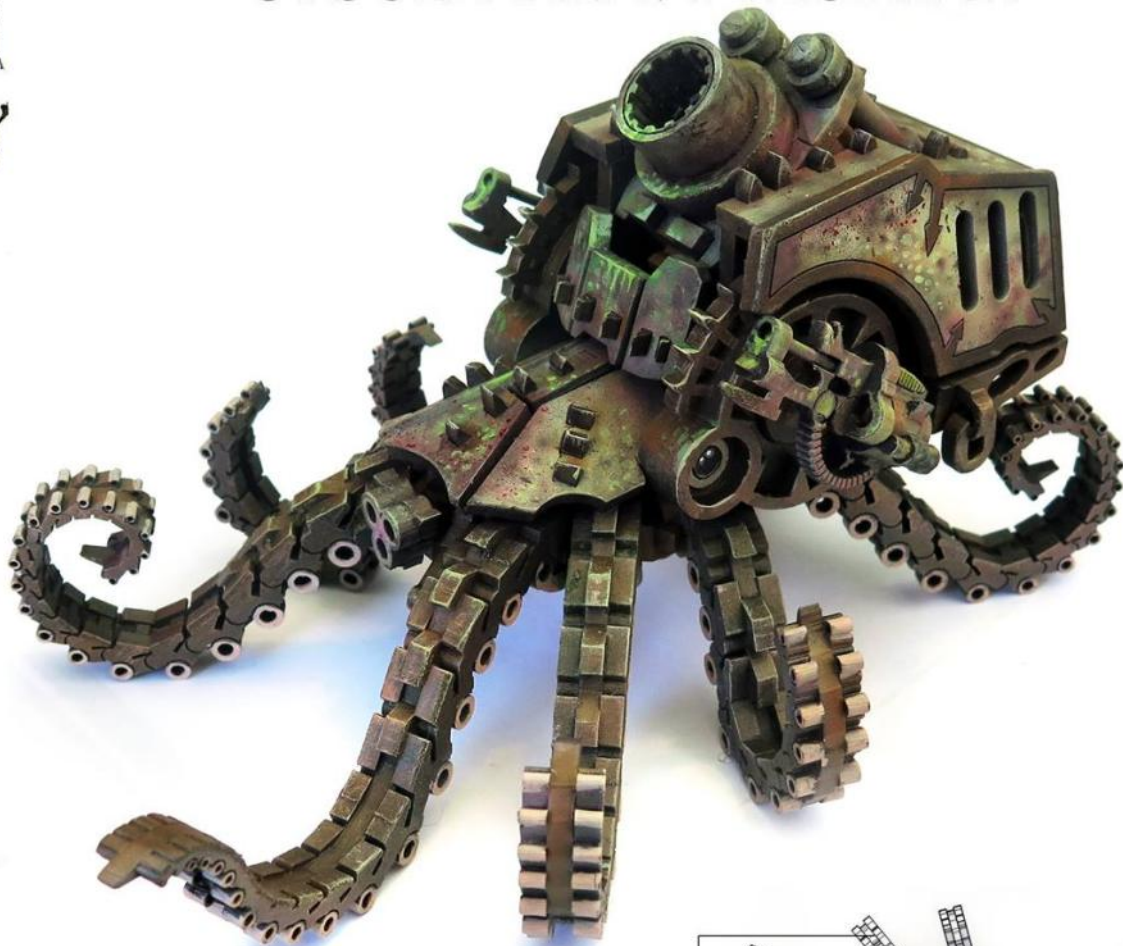


# MINIATURE SCENERY

## URSULA HEAVY MORTAR



FOR DETAILED, EASY TO FOLLOW INSTRUCTIONS VISIT

[WWW.MINIATURESCENERY.COM](http://WWW.MINIATURESCENERY.COM)



Contents may contain small parts. Not suitable for children under 6 years old. The exclusive copyright on the model designs and components within this case is the property of Miniature Scenery, 2016. All rights reserved.



# MINIATURE SCENERY

## INSTRUCTIONS URSULA SEIGE MOTAR

### Preparation

Once you clear some table space you will need a hobby knife and glue (PVA, wood glue, hobby glue) and a file or small piece of sandpaper to be used for cleaning up any tiny imperfections.

It's a good idea to familiarise yourself with how the pieces fit together before gluing.

### Getting Started

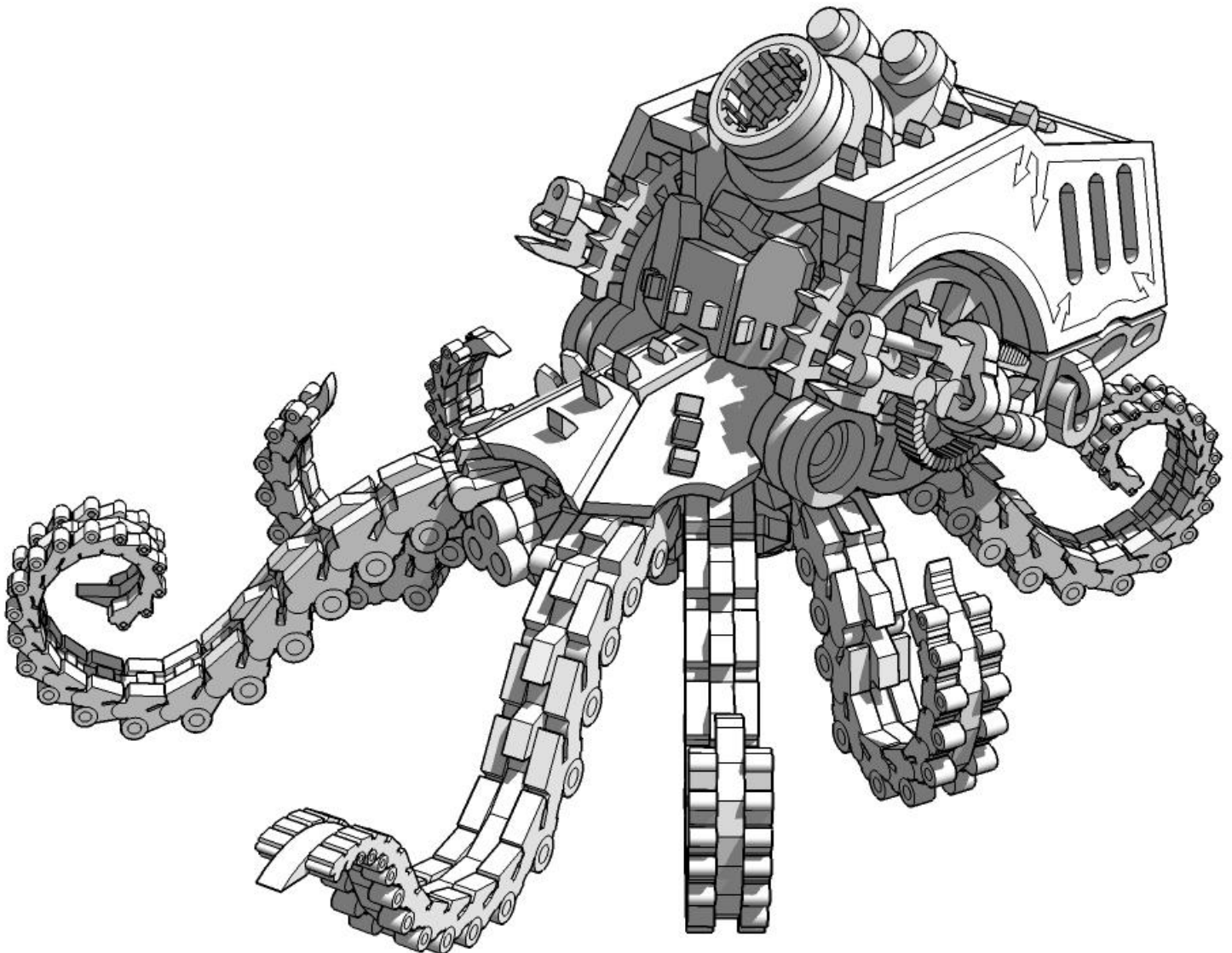
- I. Parts should remove easily from the board by pressing through and popping them out. It's a good idea to cut through the tiny joins first though, and some parts (particularly smaller, more detailed parts) may need more careful persuasion.
- II. Use a file or sand paper last to completely remove the tabs that might remain.
- III. Parts may be a very tight fit, slight trimming or sanding of parts may be needed for ease of assembly.

### Construction

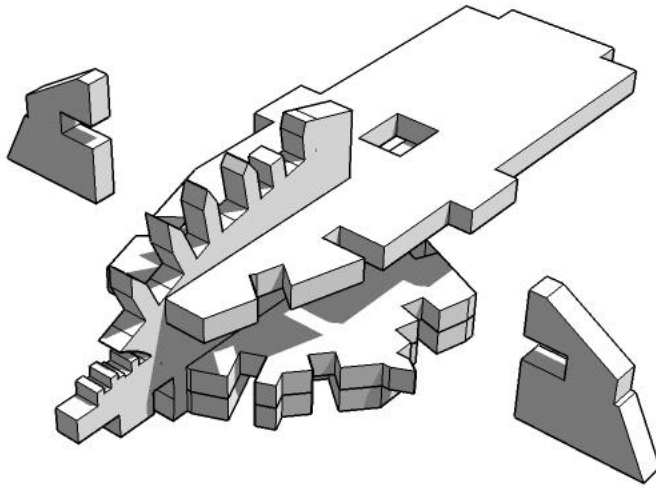
Slot the parts together as shown by the pictures below, applying glue wherever there is a connection.

Allow the model to completely dry before painting it. This may be a complex kit with many small parts. Allowing each section to dry thoroughly before heading to the next is strongly recommended.

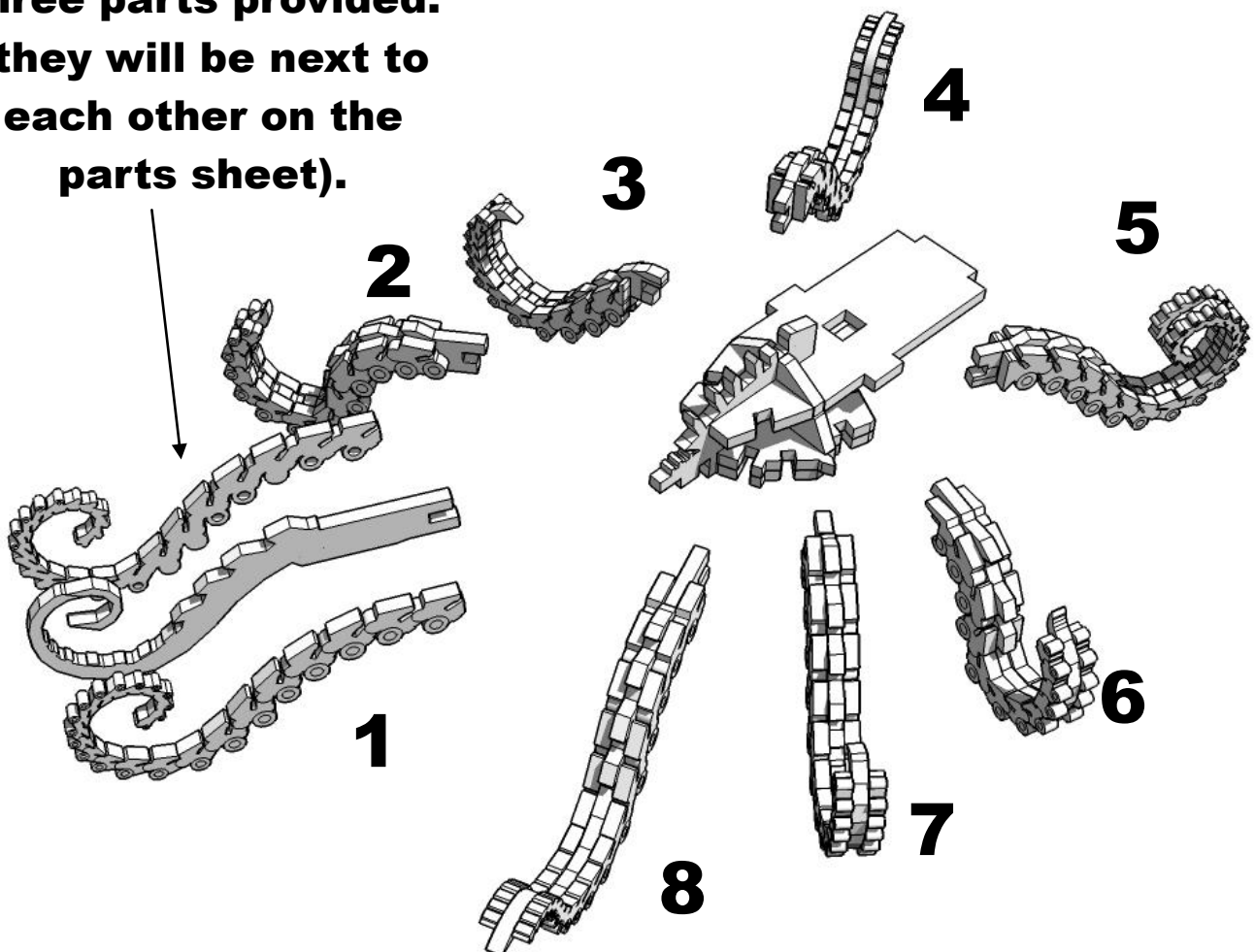
Some parts of this kit are very fine, or have engraving very close to edges. Make sure you cut through any tabs carefully with a hobby knife first to avoid damage.



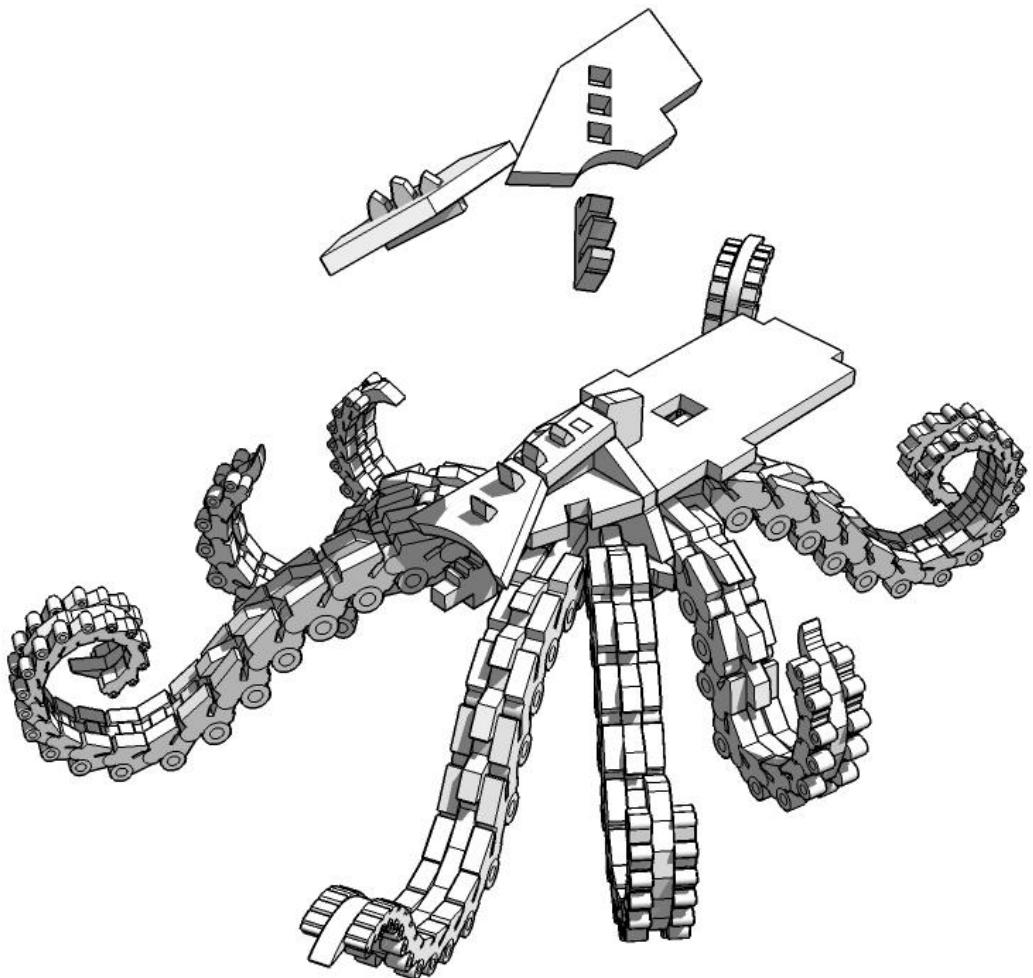
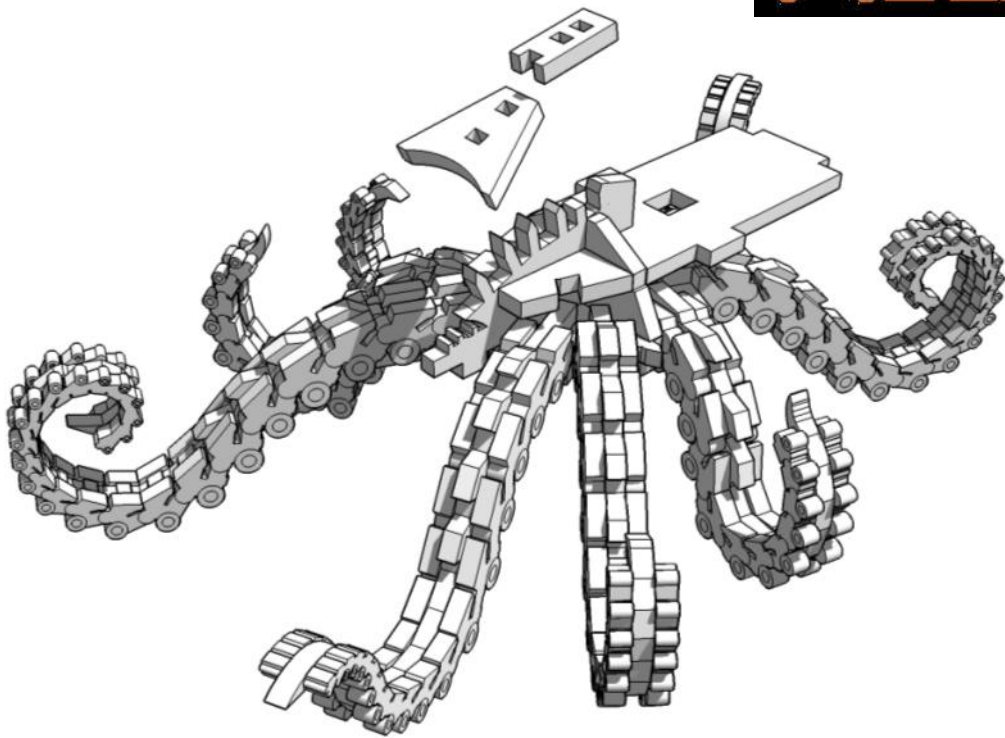
# MINIATURE SCENERY



**Assemble All legs from  
three parts provided.  
(they will be next to  
each other on the  
parts sheet).**

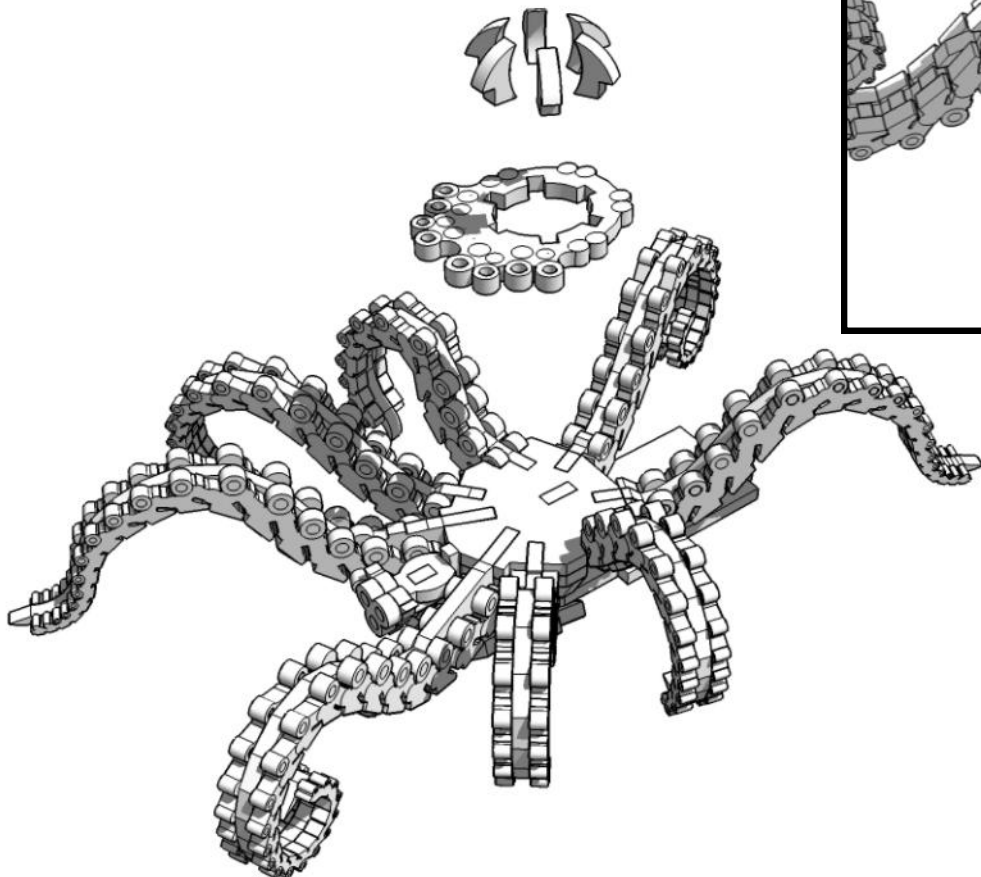
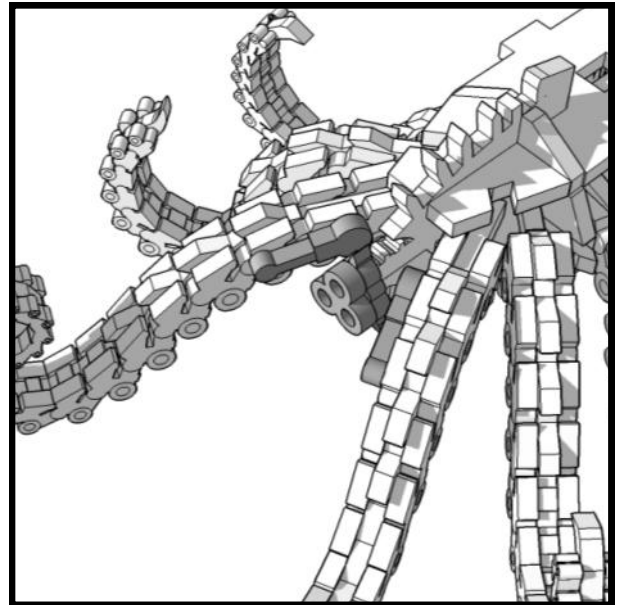
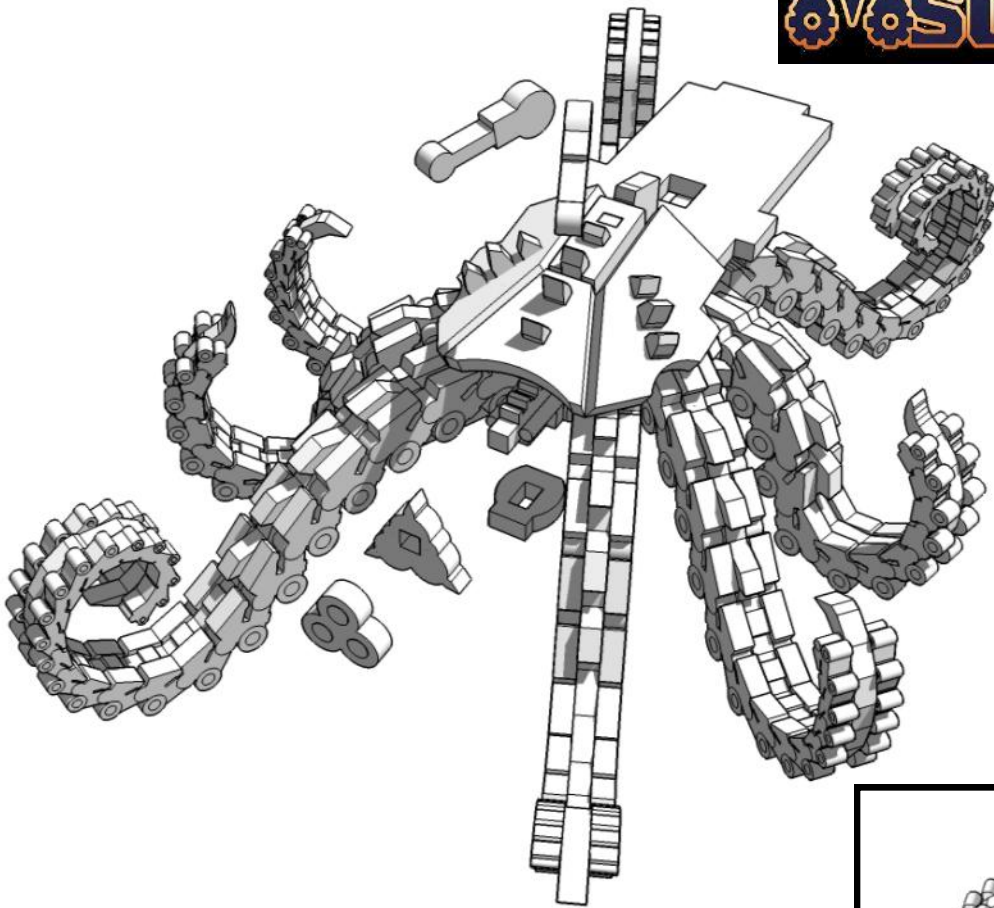


# MINIATURE SCENERY

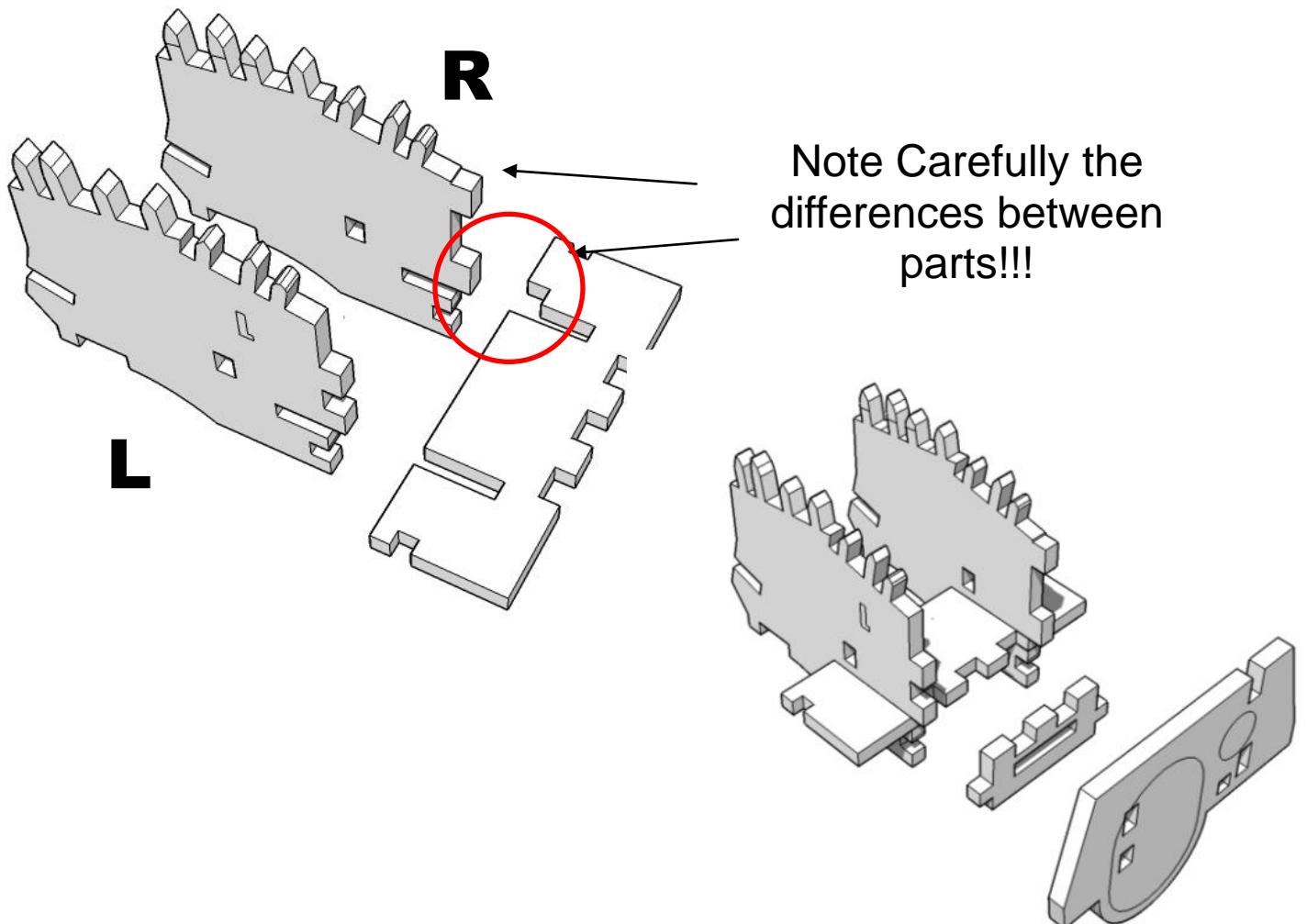
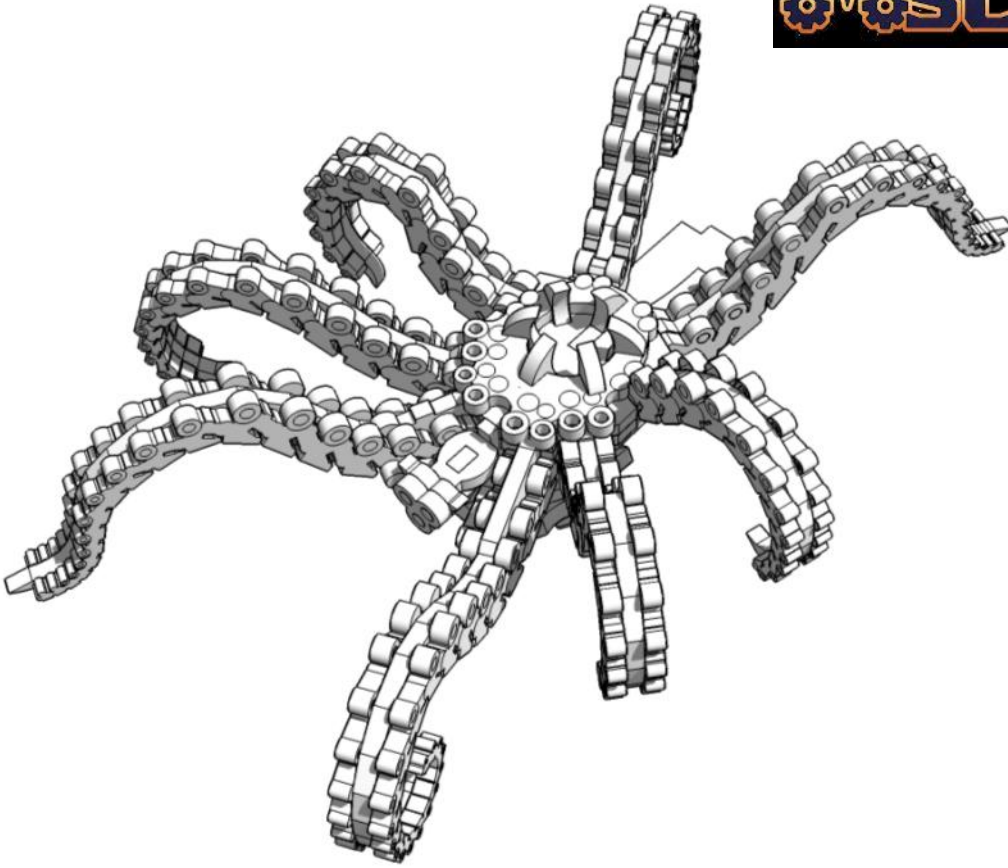




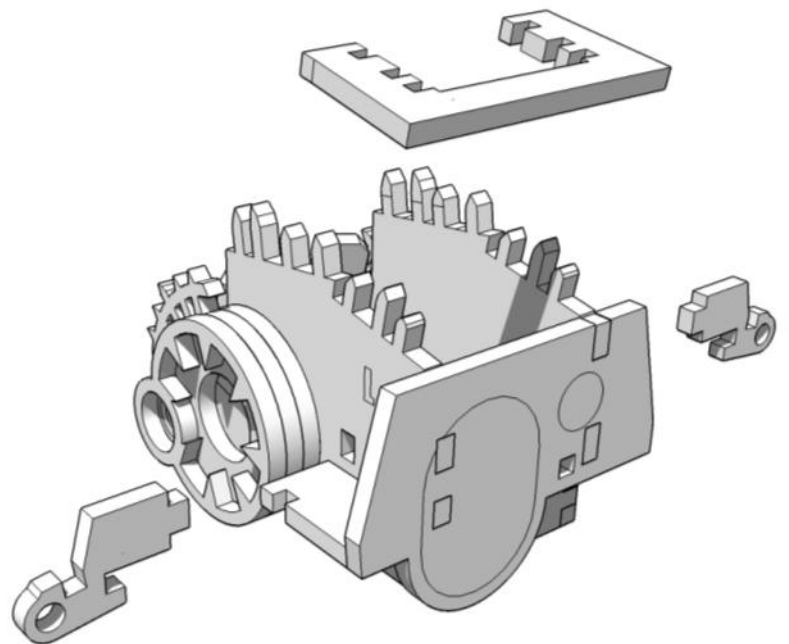
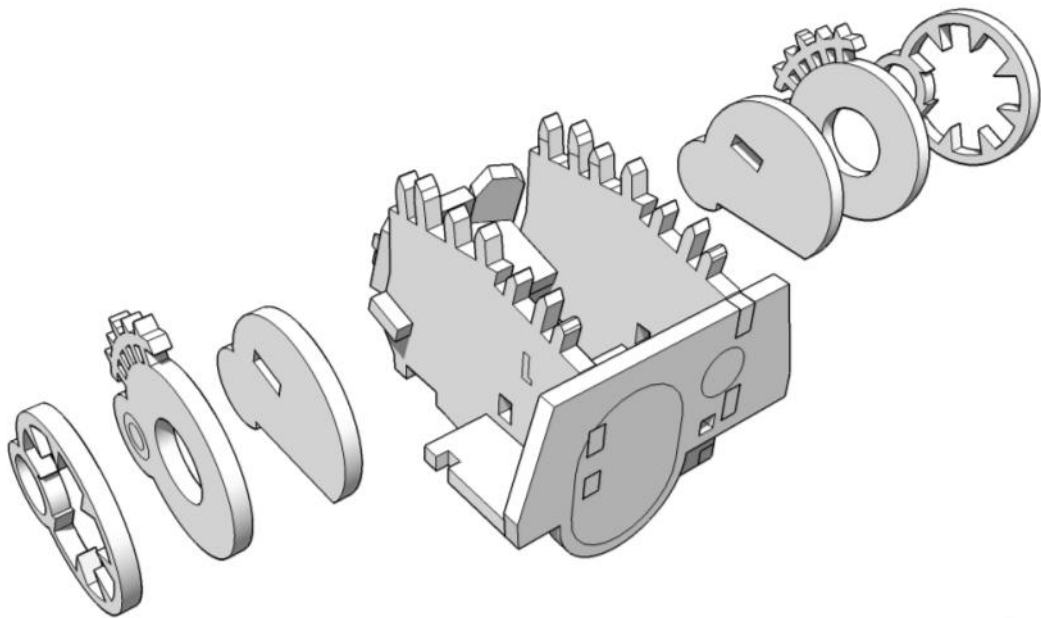
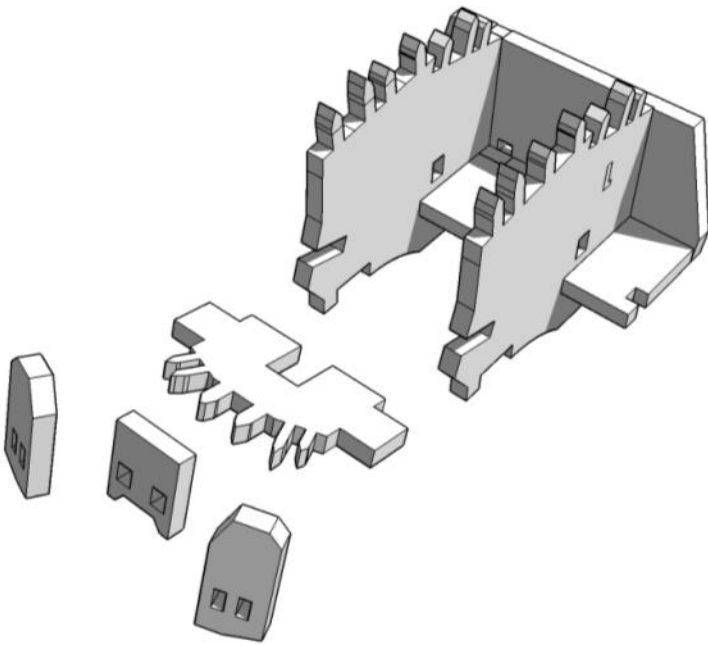
# MINIATURE SCENERY



# MINIATURE SCENERY

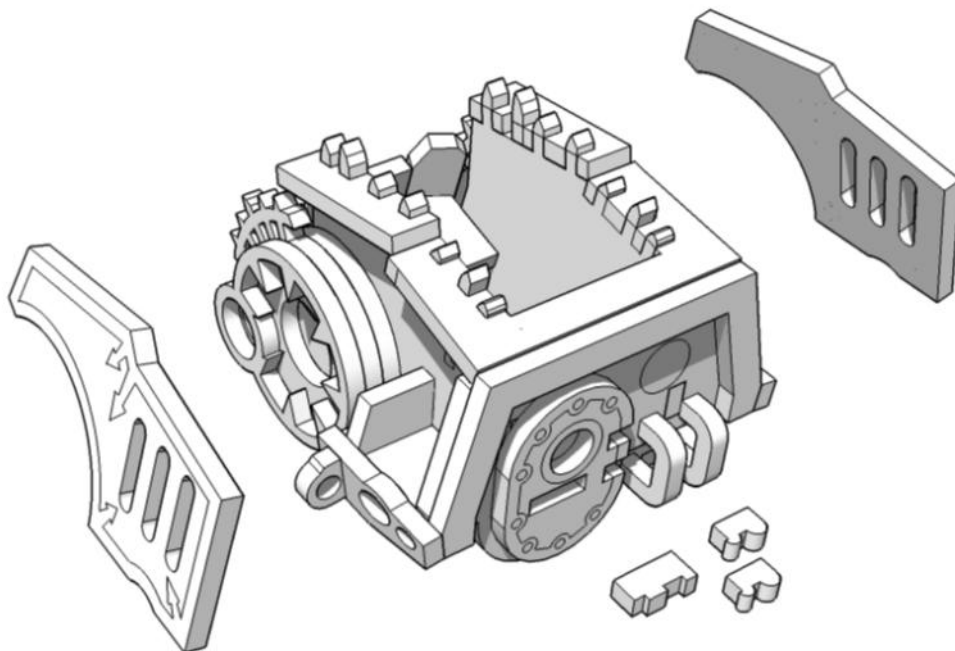
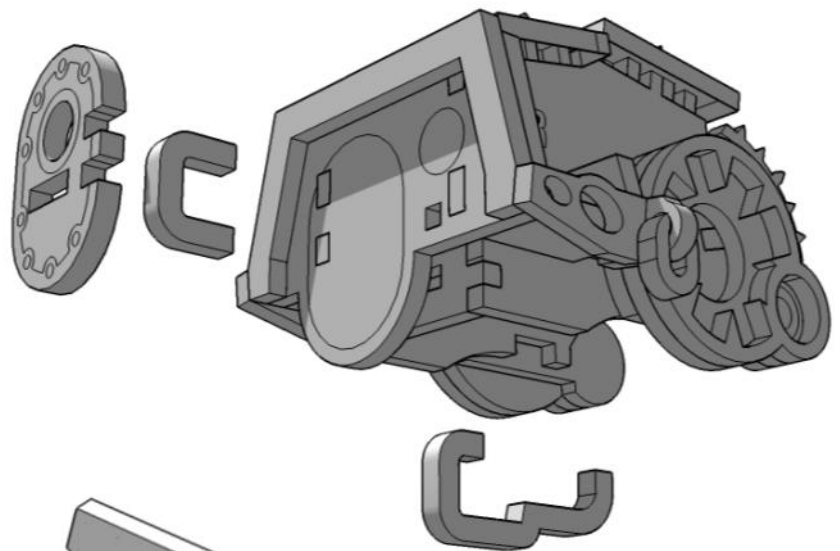
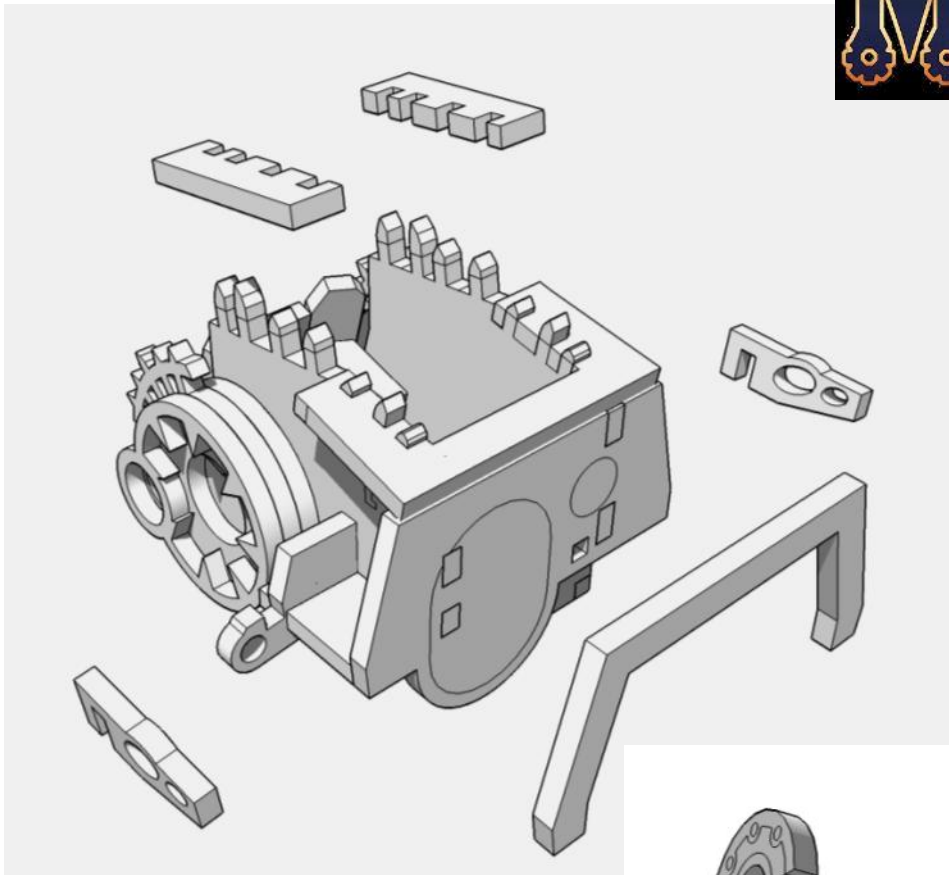


# MINIATURE SCENERY



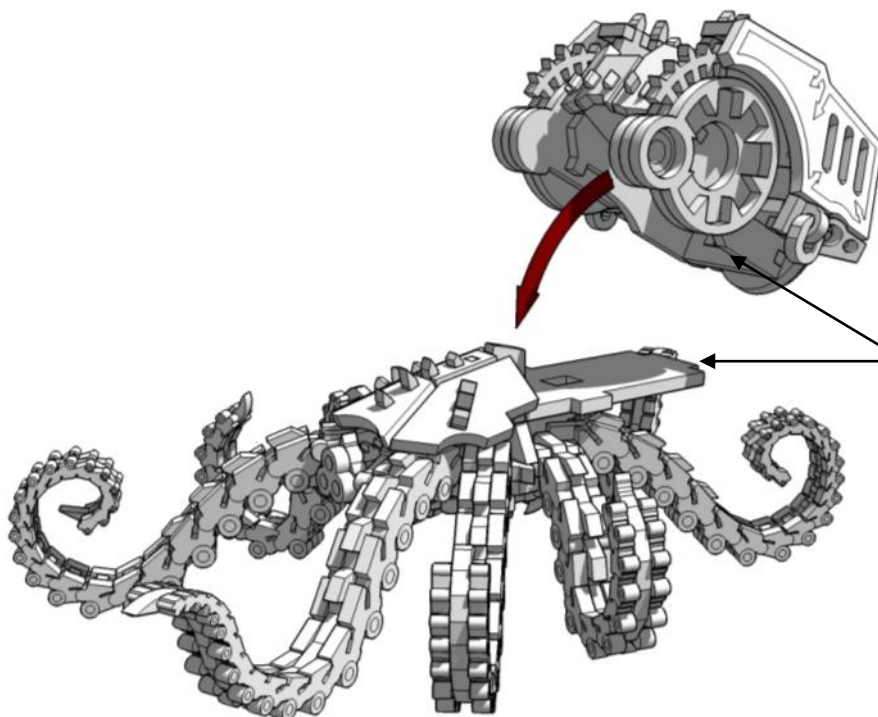
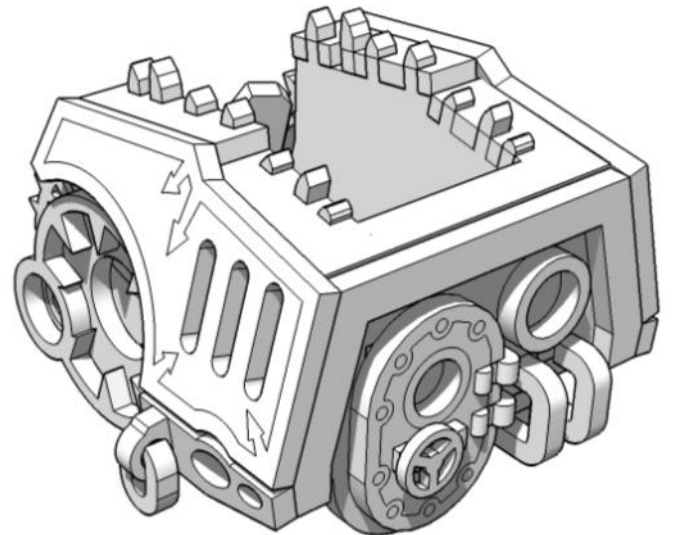
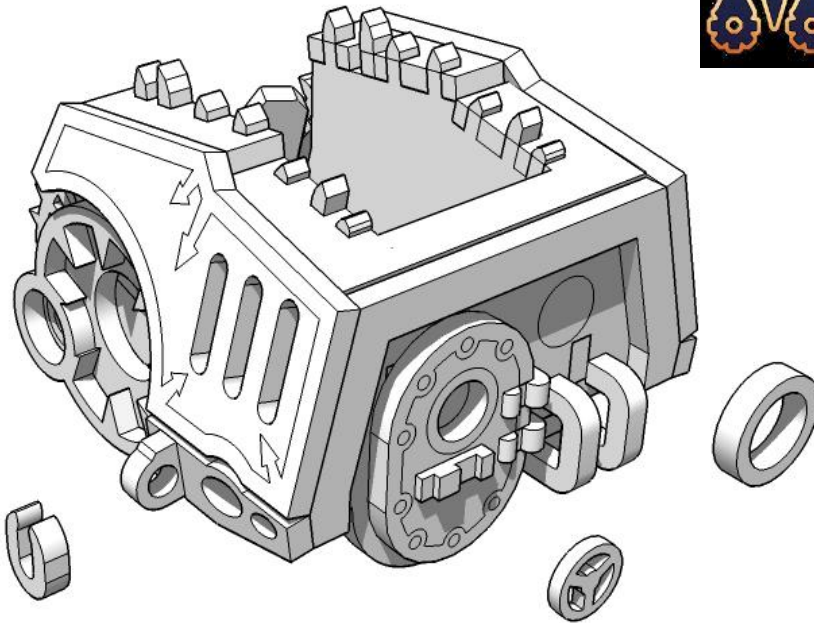


# MINIATURE SCENERY

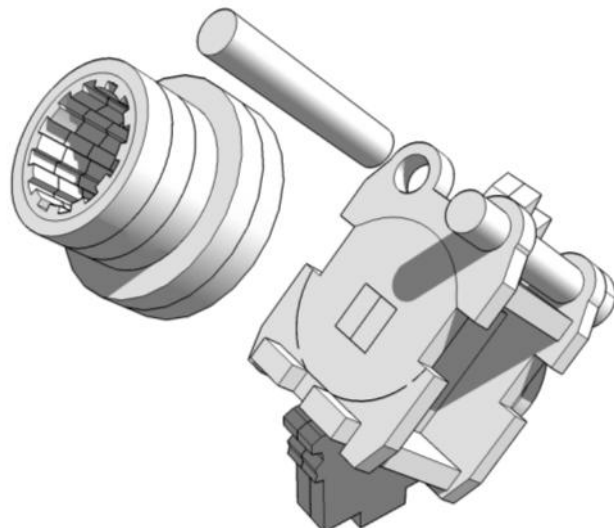
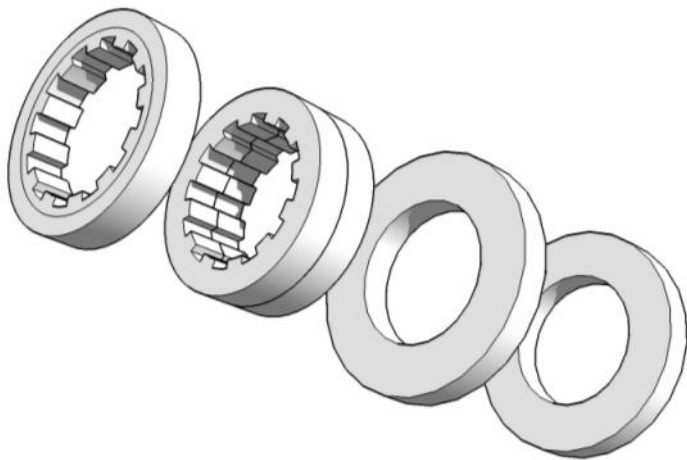
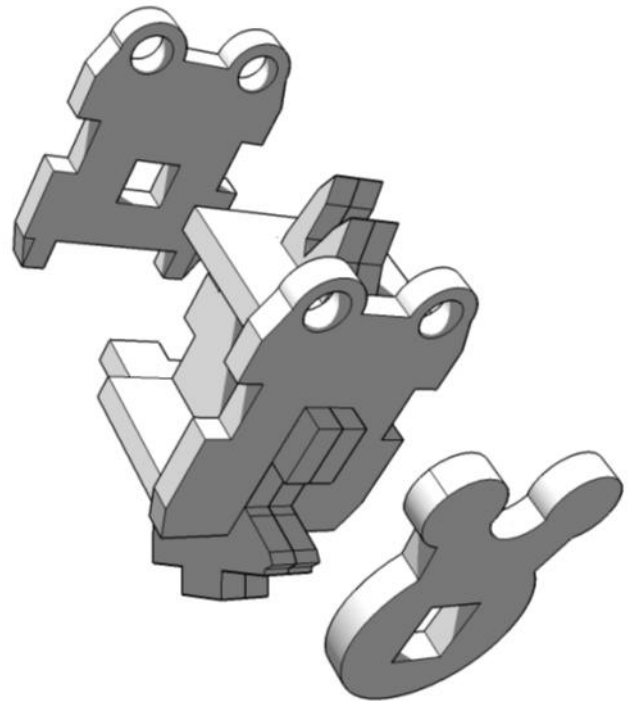
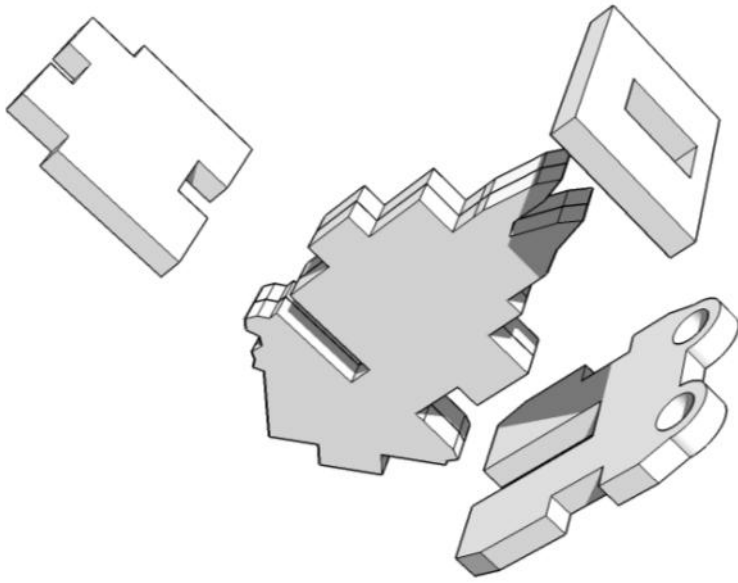




# MINIATURE SCENERY



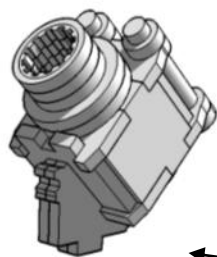
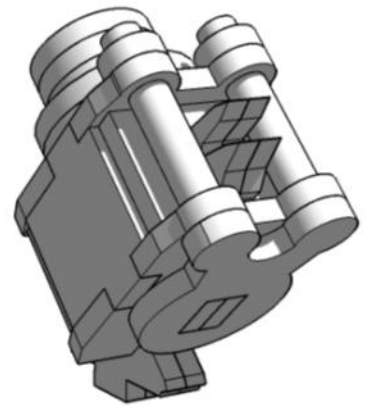
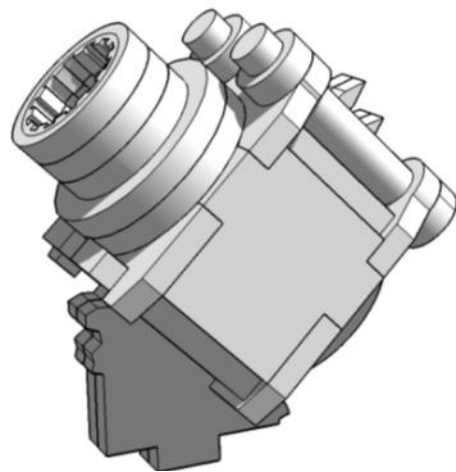
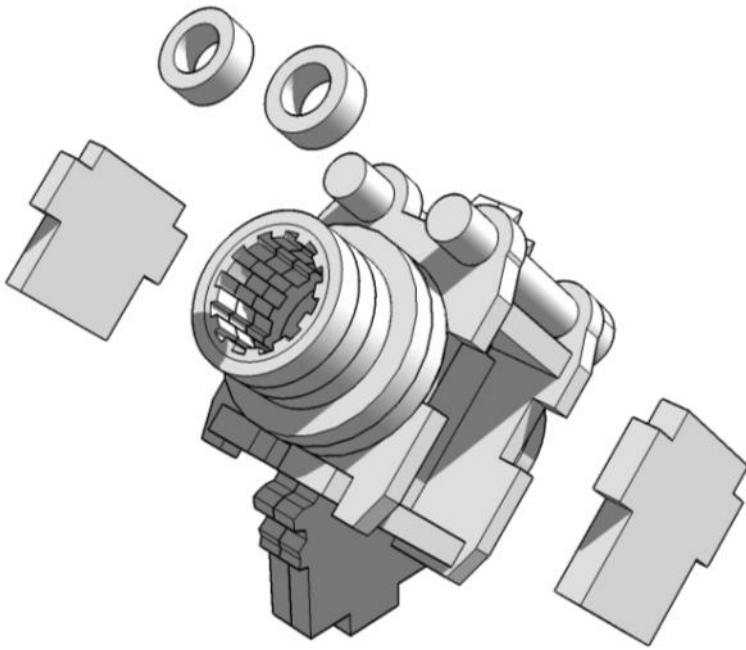
Insert tab into slot at back  
and tilt forward.



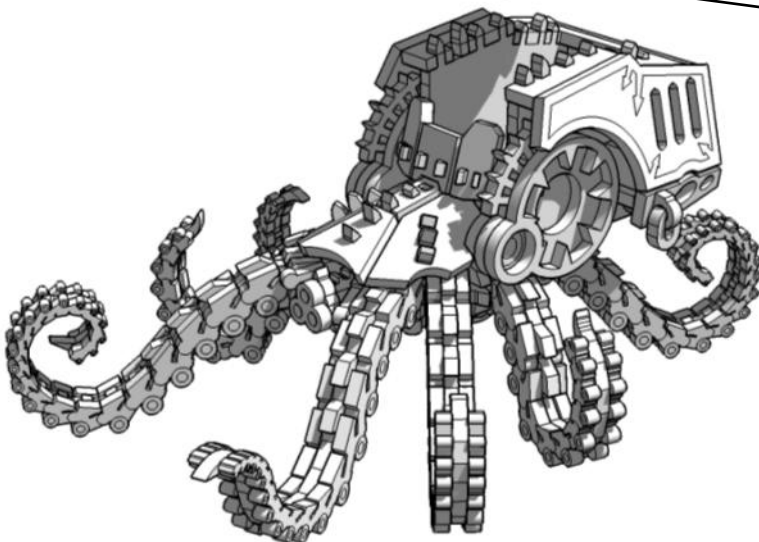
Cut Supplied 5mm  
dowel to approx  
28mm lengths.



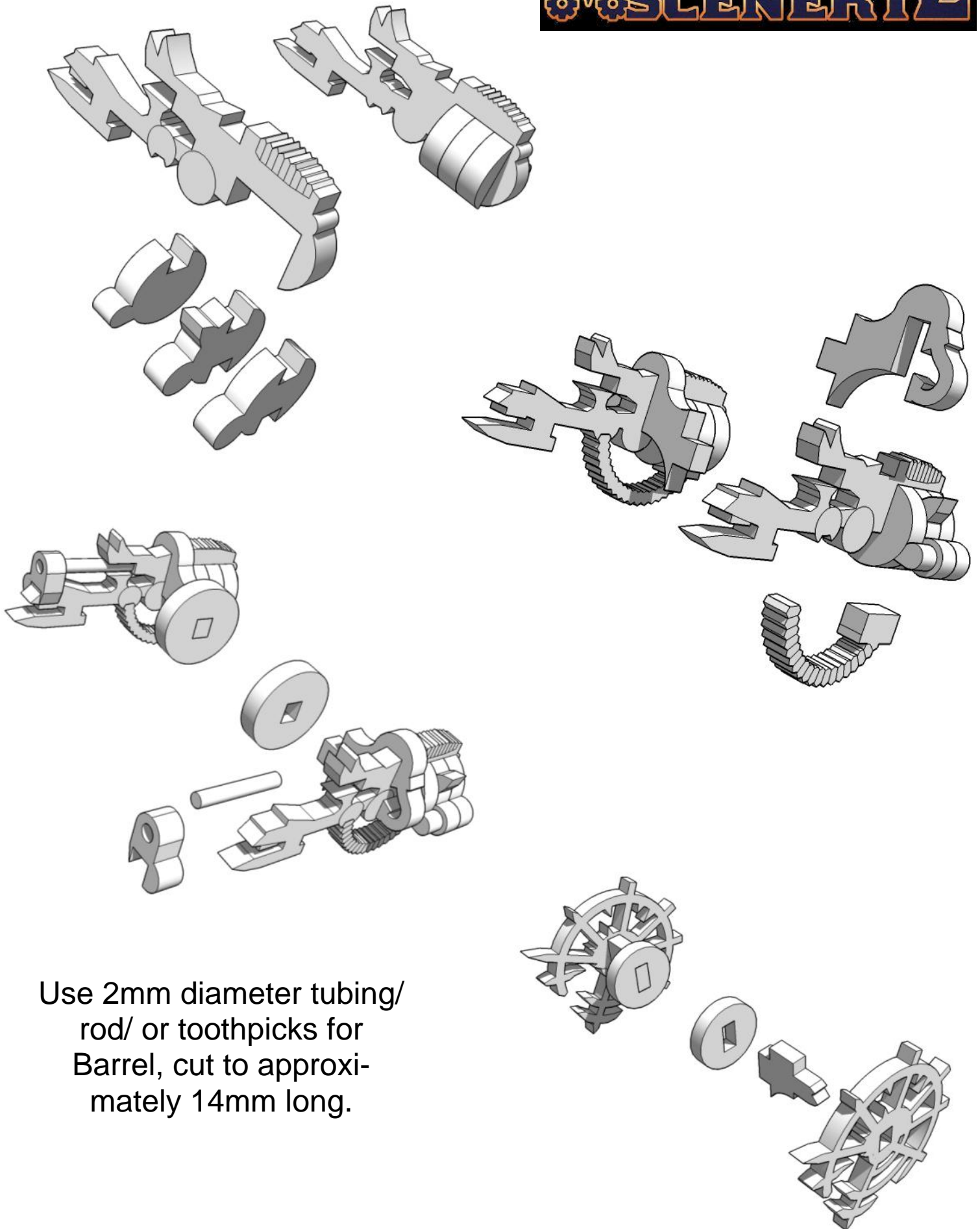
# MINIATURE SCENERY



The Gun may be a very tight fit. Enthusiastic wiggling may be required.

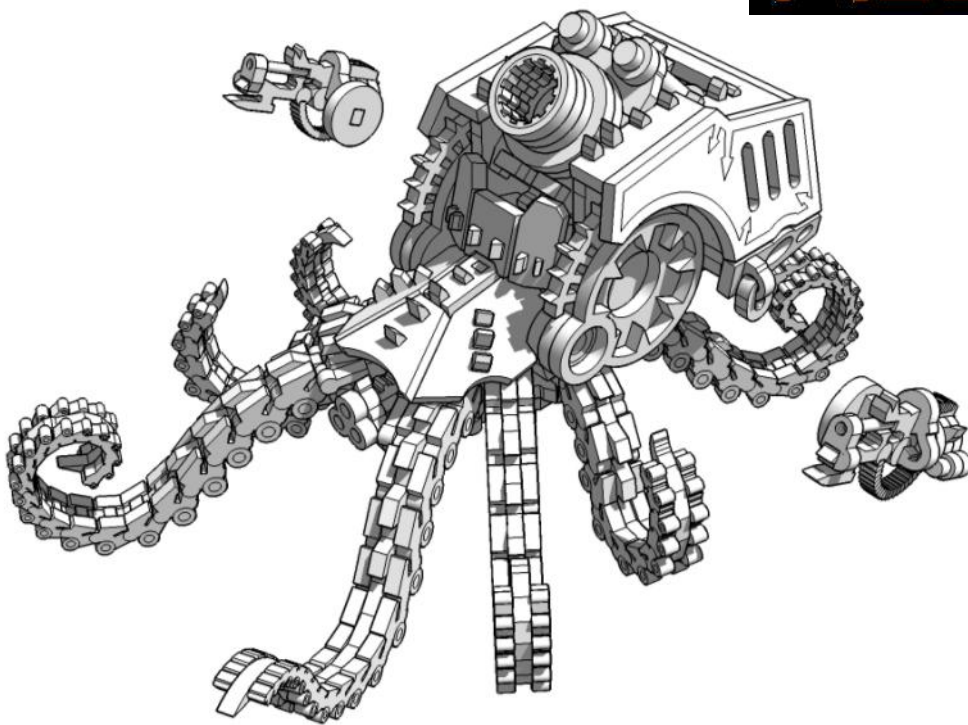


# MINIATURE SCENERY



Use 2mm diameter tubing/  
rod/ or toothpicks for  
Barrel, cut to approxi-  
mately 14mm long.





Alternate parts. With or  
Without Guns.

