

CNC WORKSHOP®

MINIATURE SCENERY



Model supplied unpainted and unassembled

ZEPHYR PENGUIN

MINIATURE SCENERY MODELS ARE DESIGNED FOR 25MM (1 INCH) BASE MINIATURES, IDEAL FOR GAMERS AND COLLECTORS.

AT WWW.MINIATURESCENERY.COM WE PROVIDE DETAILED AND EASY TO FOLLOW ILLUSTRATED GUIDES FOR PAINTING TERRAIN.

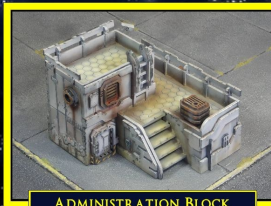
THE ZEPHYR PENGUIN USES BOTH ANTI-GRAV TECHNOLOGY AND STANDARD AERODYNAMIC LIFT TO CREATE A UNIQUE AND VERY AGILE FIGHTER AIRCRAFT.

DURING THE DESIGN PHASE, MANY SAID IT WOULD NEVER FLY AND CALLED IT A PENGUIN. A NAME IT CARRIES TO THIS DAY.

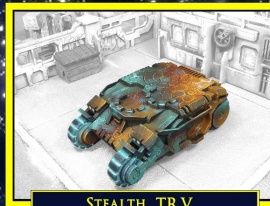
ALL INSTRUCTIONS AVAILABLE ONLINE AT [HTTP://WWW.MINIATURESCENERY.COM](http://WWW.MINIATURESCENERY.COM)



ENCLOSED COMPONENTS AFTER ASSEMBLY



ADMINISTRATION BLOCK



STEALTH TRV



STEEL WORM



STREET SCENERY 1



Zephyr Penguin

Preparation

Once you clear some table space you will need a hobby knife and glue (PVA, wood glue, hobby glue) and a file or small piece of sandpaper to be used for cleaning up any tiny imperfections.

It's a good idea to familiarise yourself with how the pieces fit together before gluing.

Getting Started

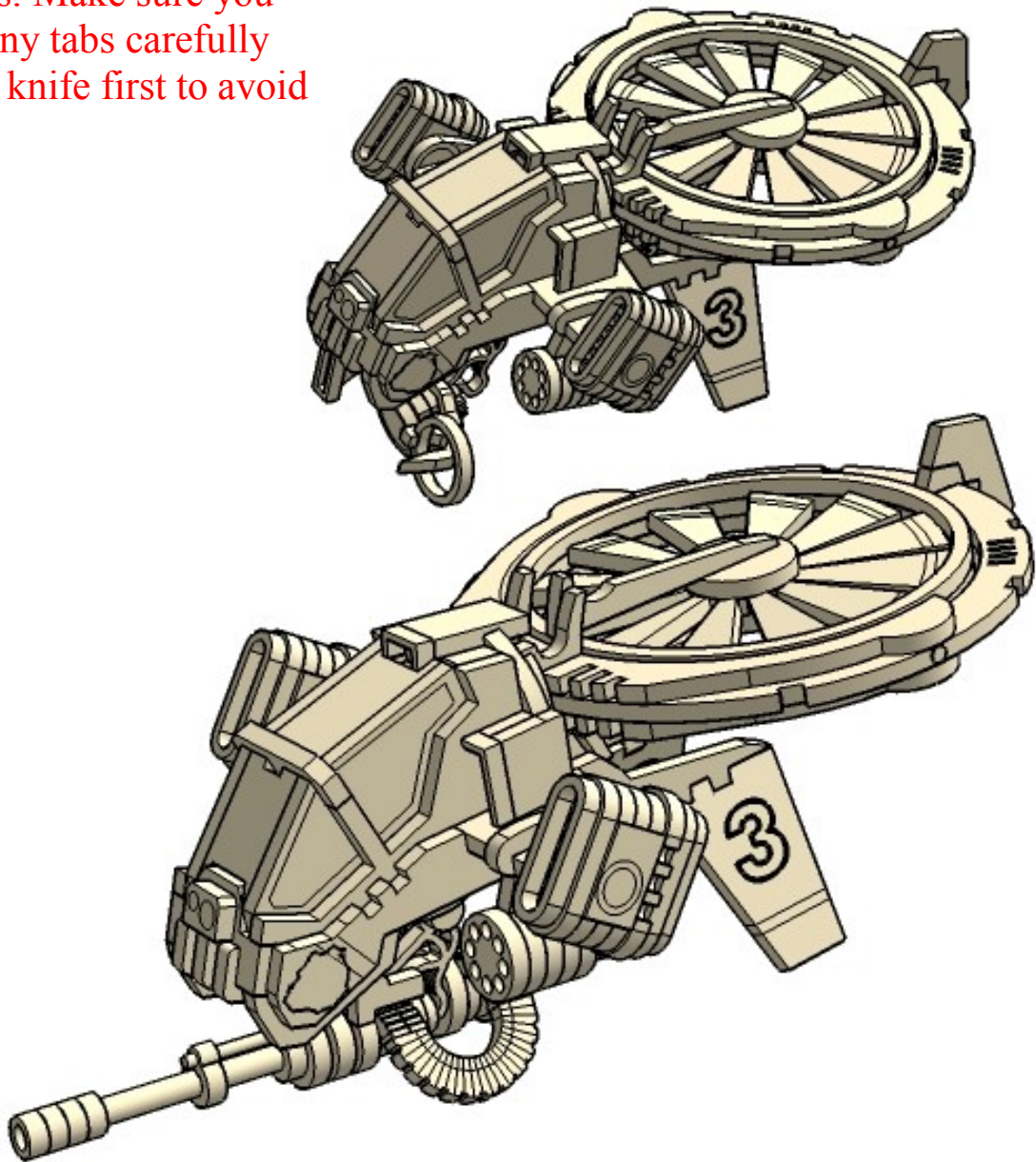
- I. Parts should remove easily from the board by pressing through and popping them out. It's a good idea to cut through the tiny joins first though, and some parts (particularly smaller, more detailed parts) may need more careful persuasion.
- II. Use a file or sand paper last to completely remove the tabs that might remain.
- III. Parts may be a very tight fit, slight trimming or sanding of parts may be needed for ease of assembly.

Construction

Slot the parts together as shown by the pictures below, applying glue wherever there is a connection.

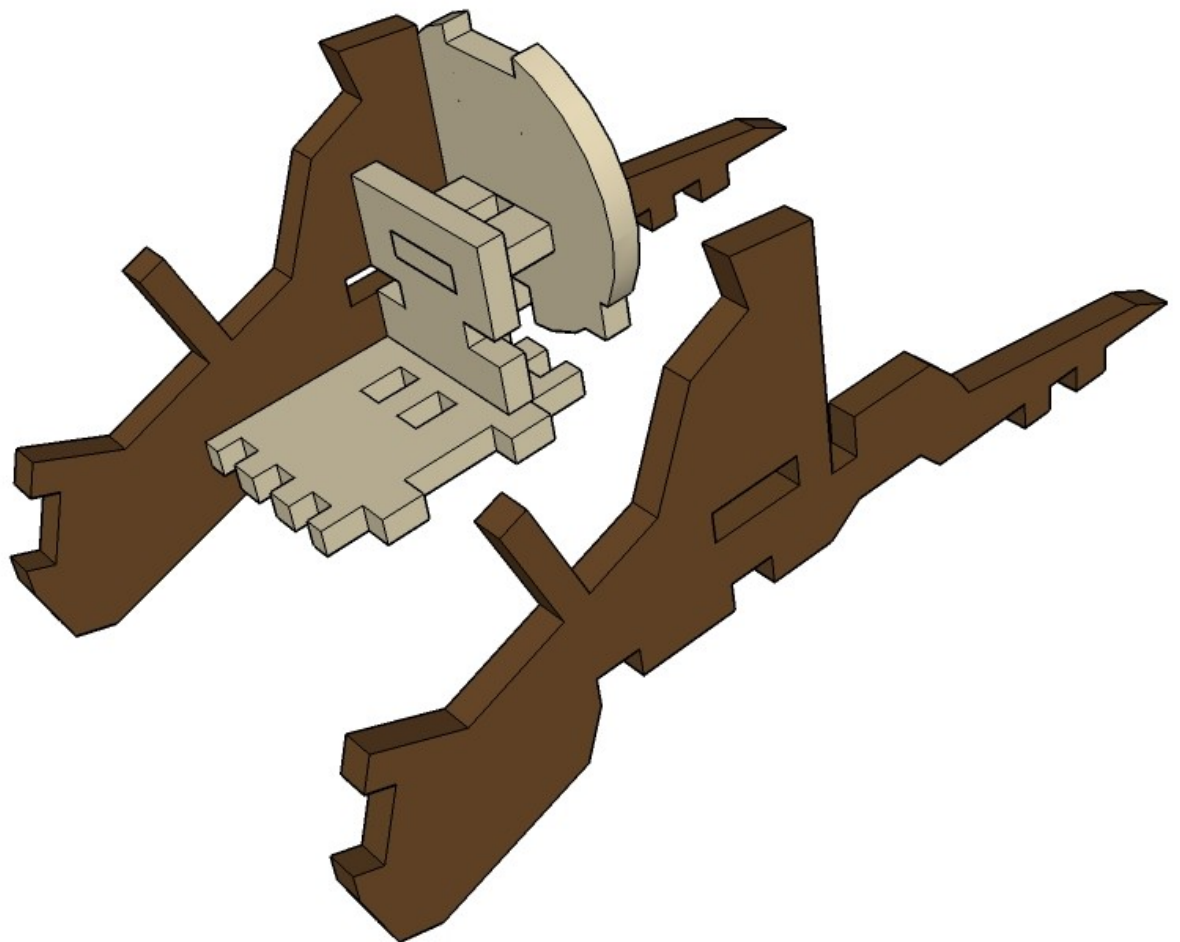
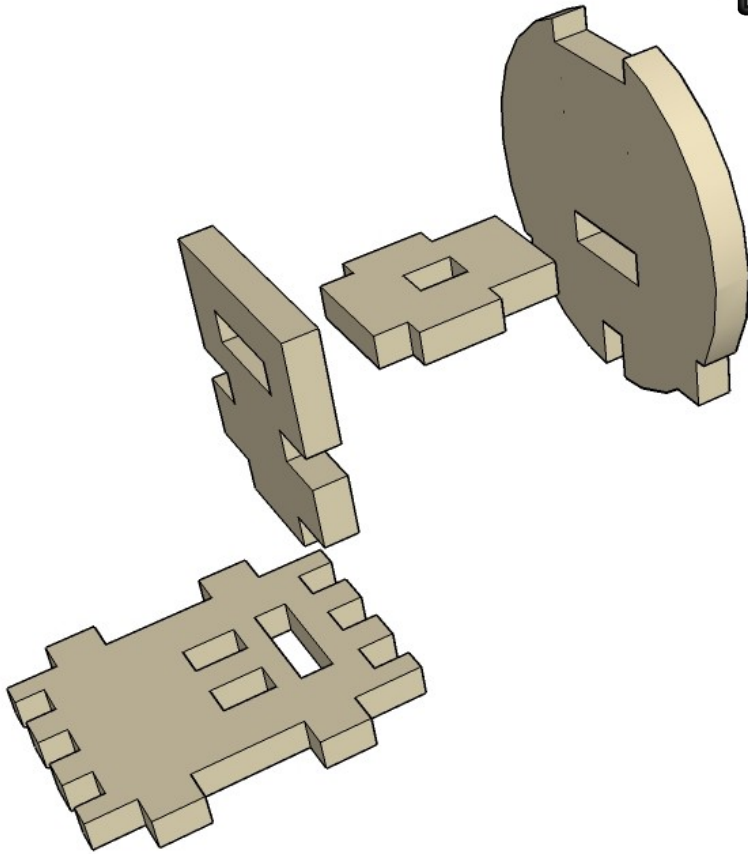
Allow the model to completely dry before painting it. This is a complex kit with many small parts. Allowing each section to dry thoroughly before heading to the next is strongly recommended.

Some parts of this kit are very fine, or have engraving very close to edges. Make sure you cut through any tabs carefully with a hobby knife first to avoid damage.



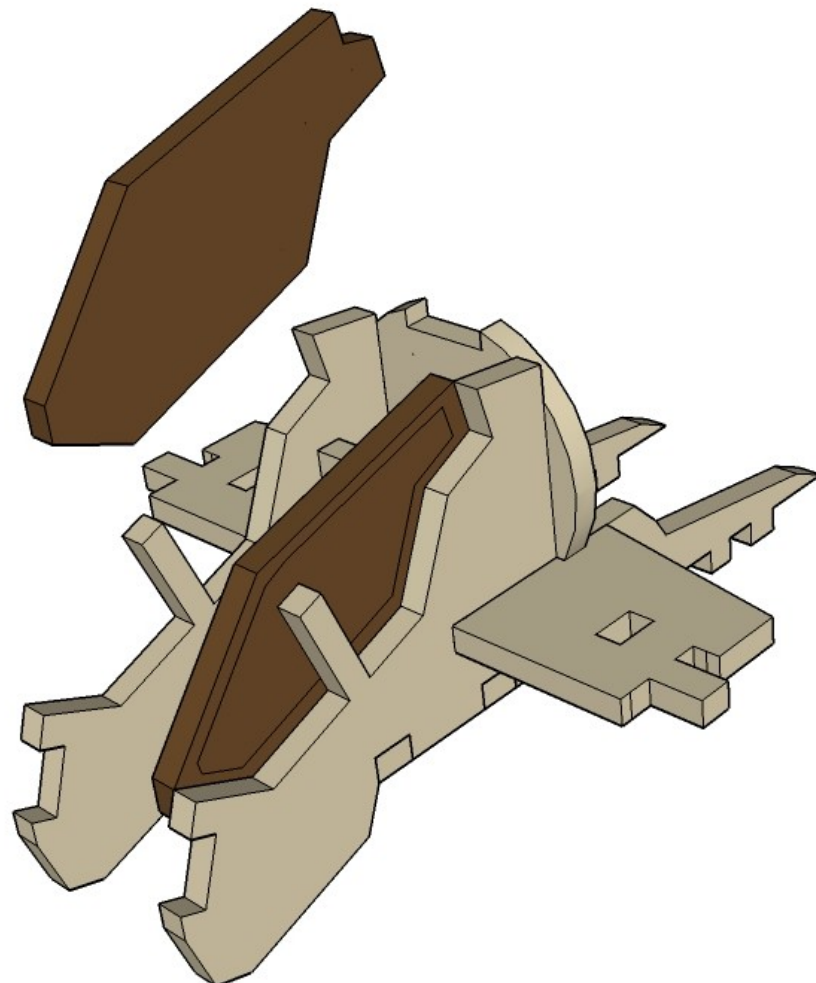
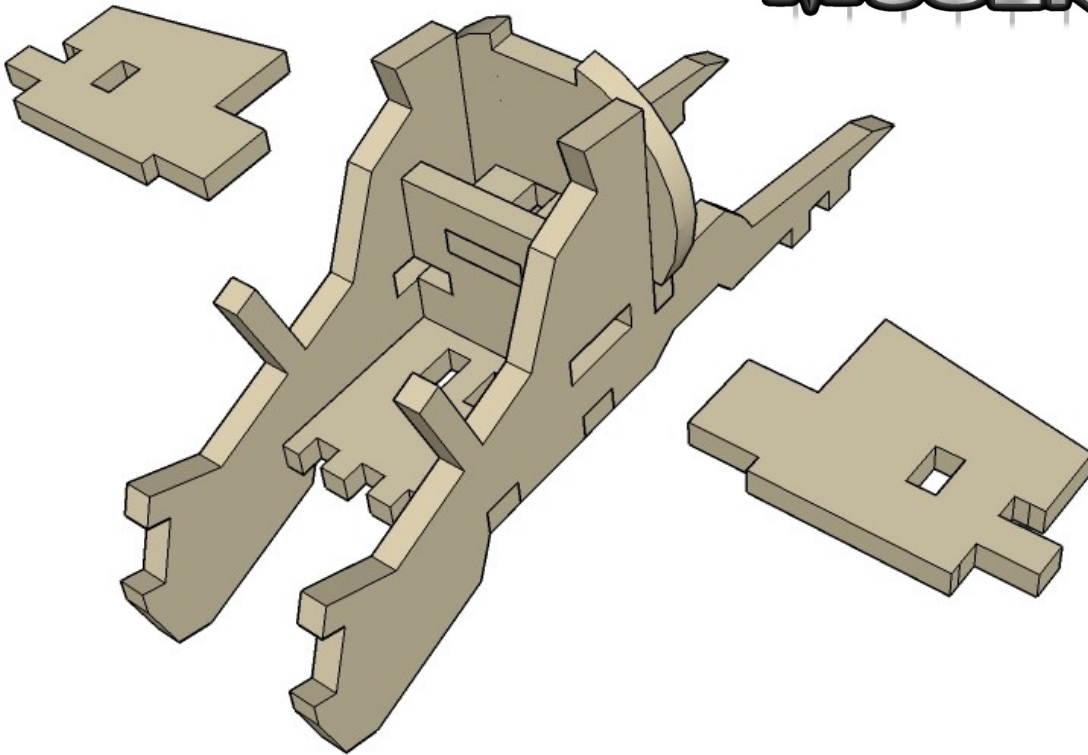
CNC WORKSHOP

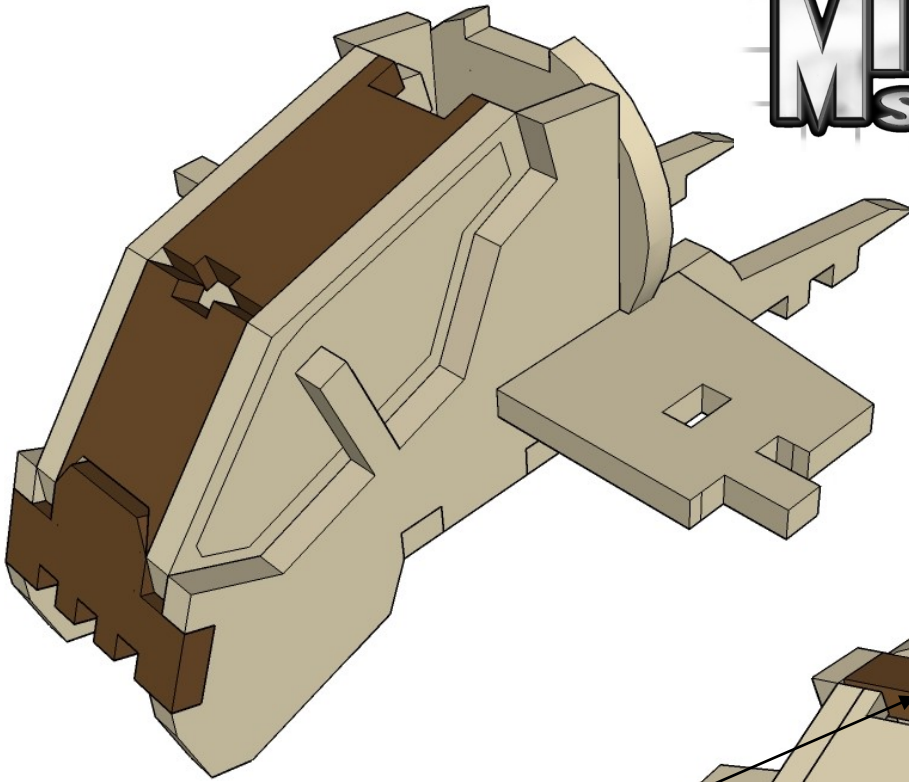
MINIATURE SCENERY



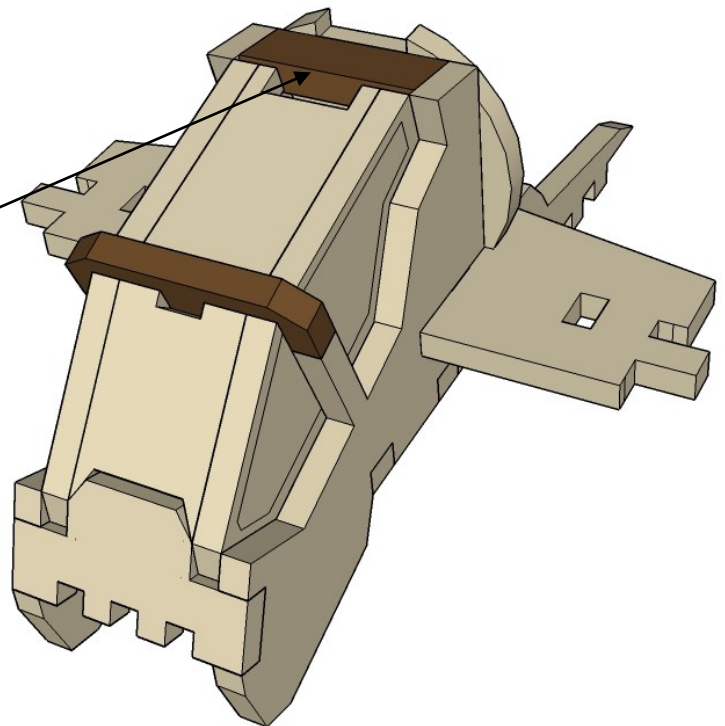
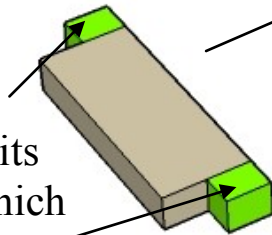
CNC WORKSHOP

MINIATURE SCENERY

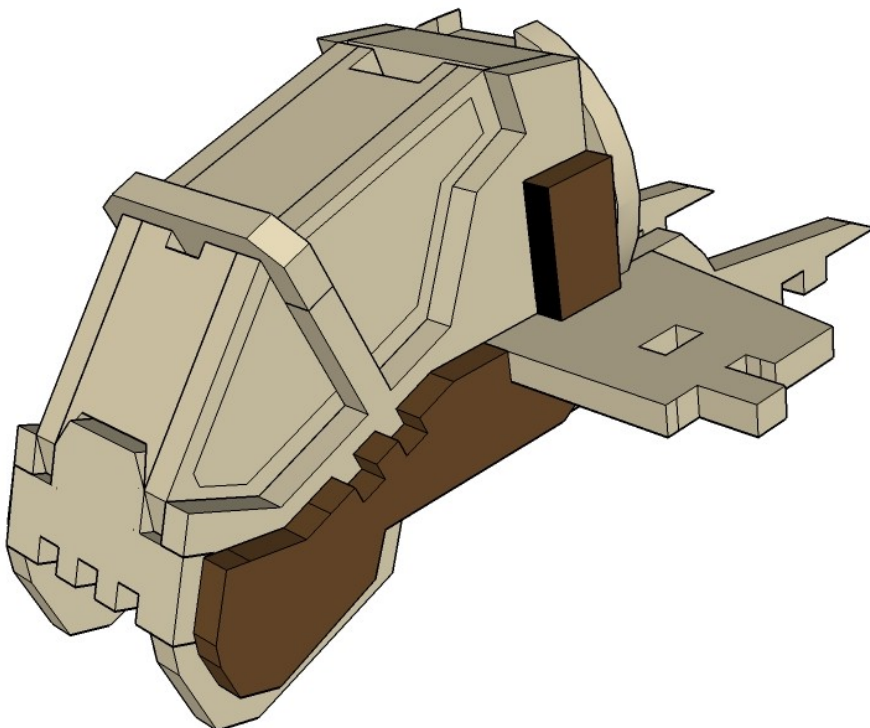


**ERRATA!!!**

I goofed. Ealerly kits will have a piece which will need these bits removed.

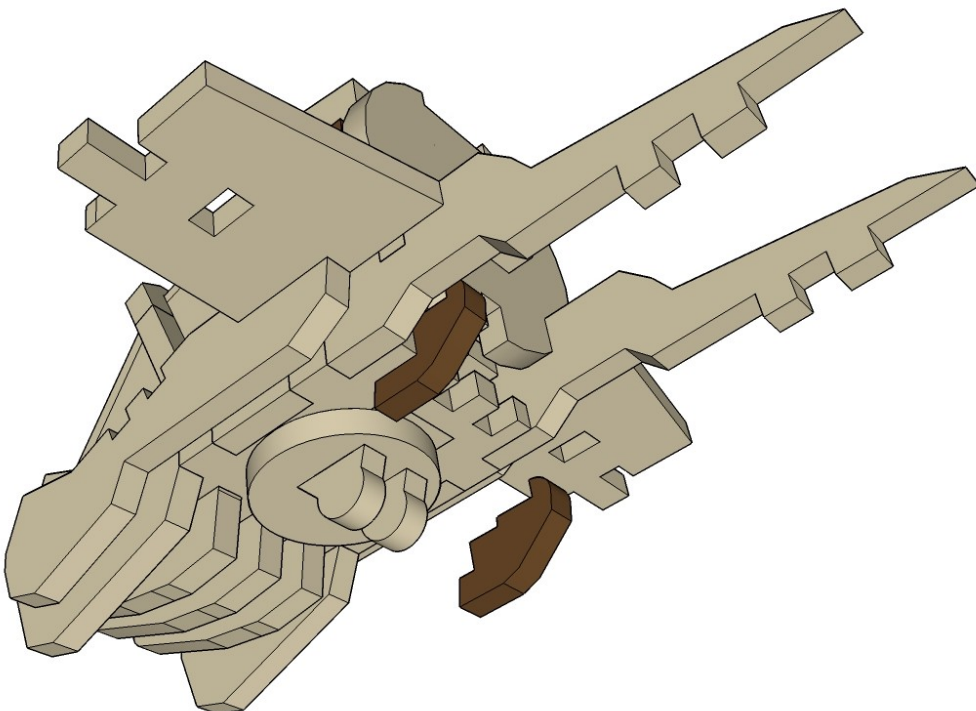
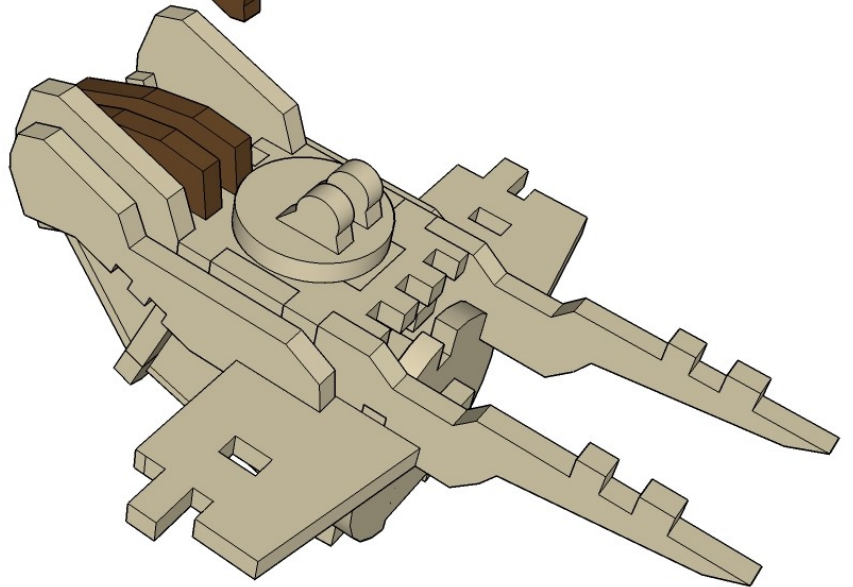
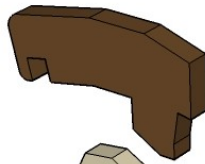
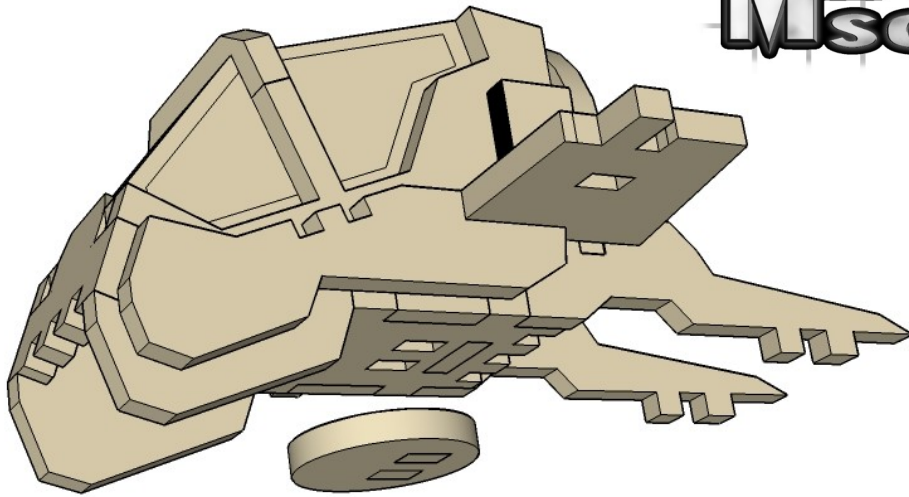


Sorry about that.



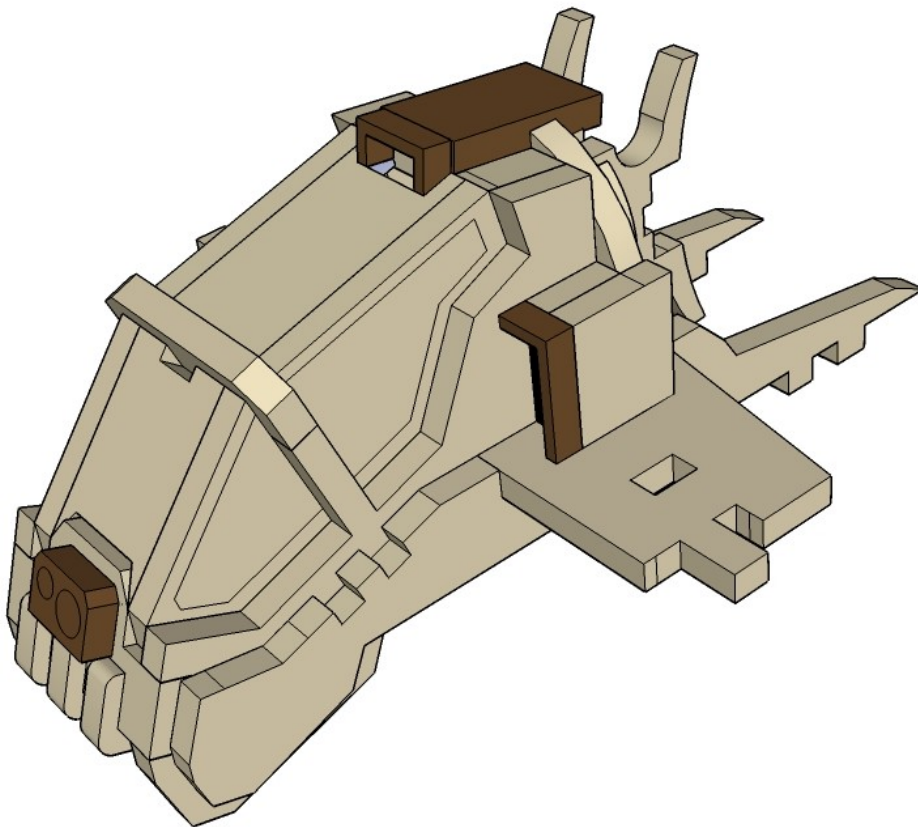
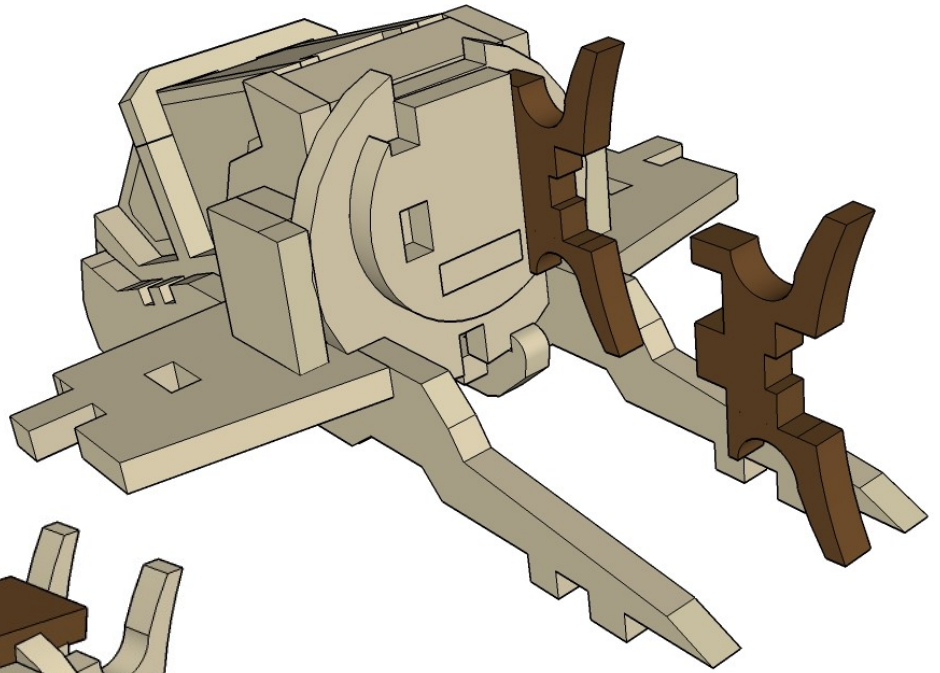
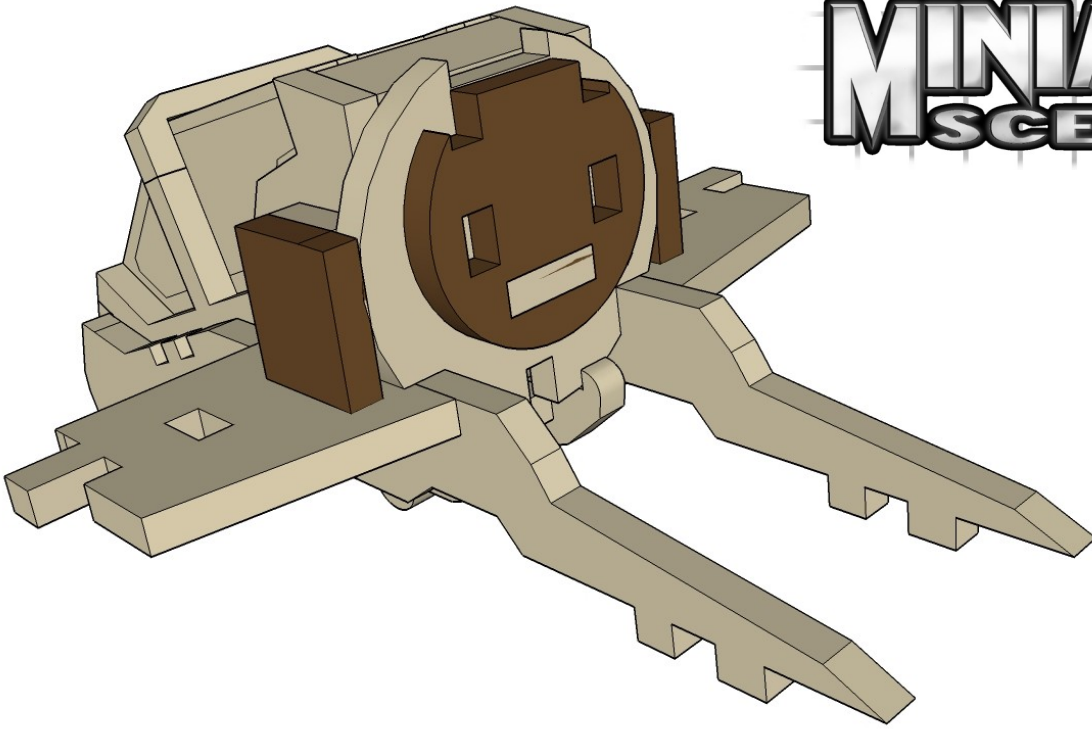
CNC WORKSHOP

MINIATURE SCENERY



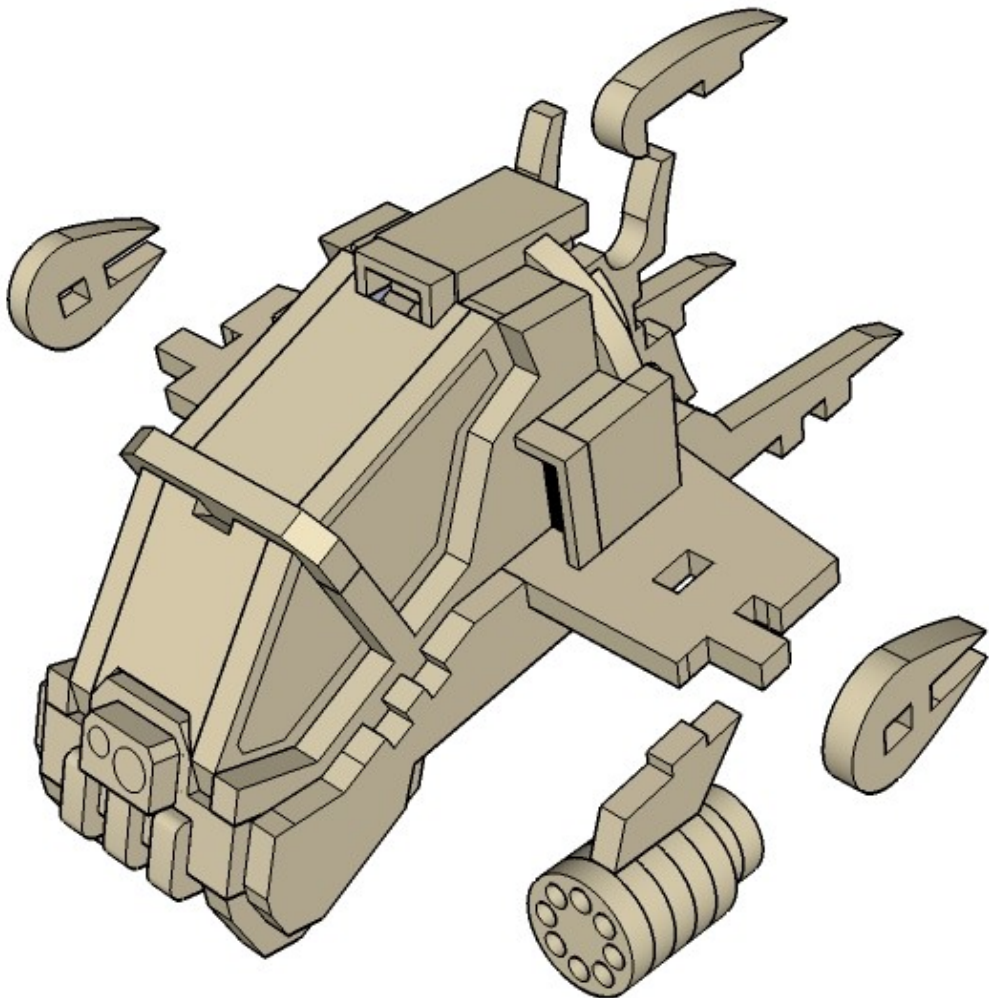
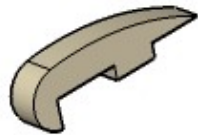
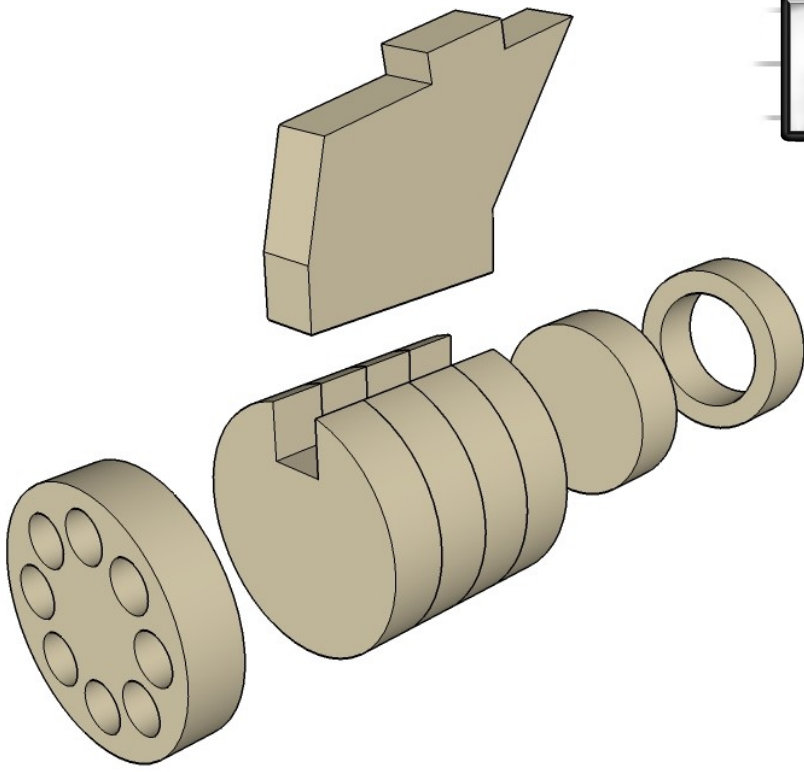
CNC WORKSHOP

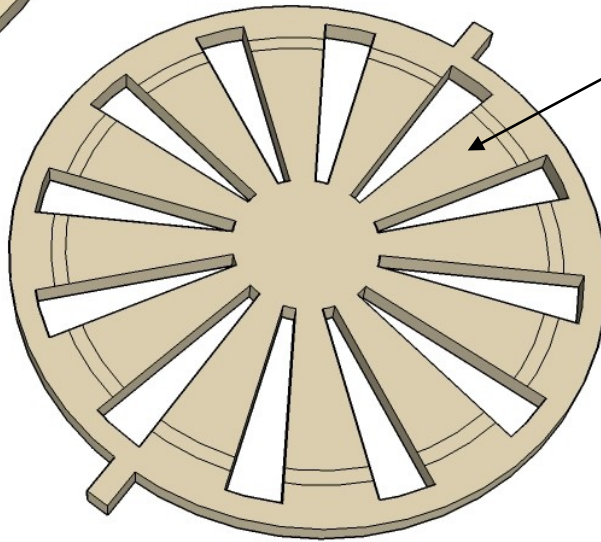
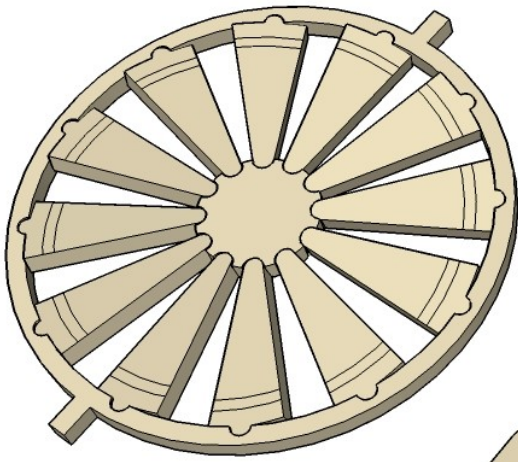
MINIATURE SCENERY



CNC WORKSHOP

MINIATURE SCENERY





This part
Replaces
these
parts (the
top ring
with the
indents
and the
Central
notched
hub.

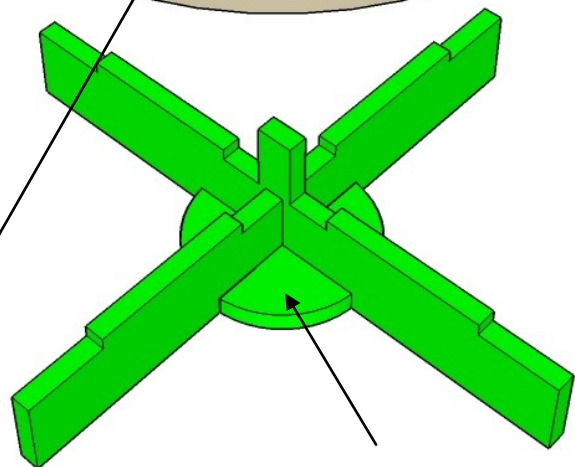
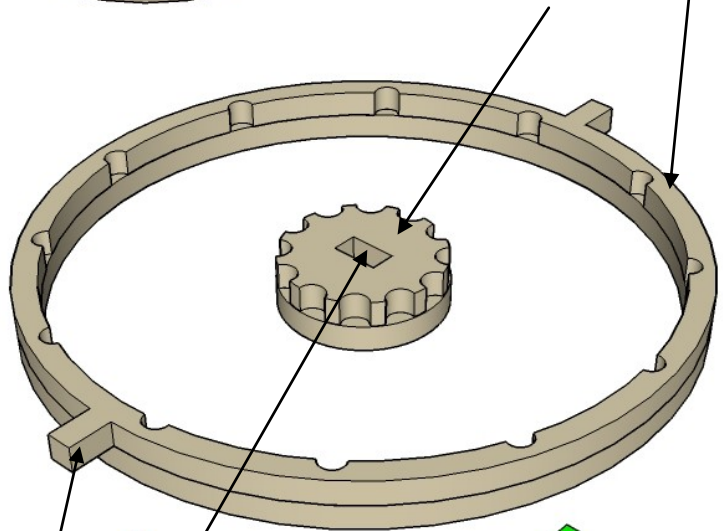
This Kit Provides alternative parts
for the rotor assembly.

A simple, one piece , flat part and
a more complex option that al-
lows for angled blades.

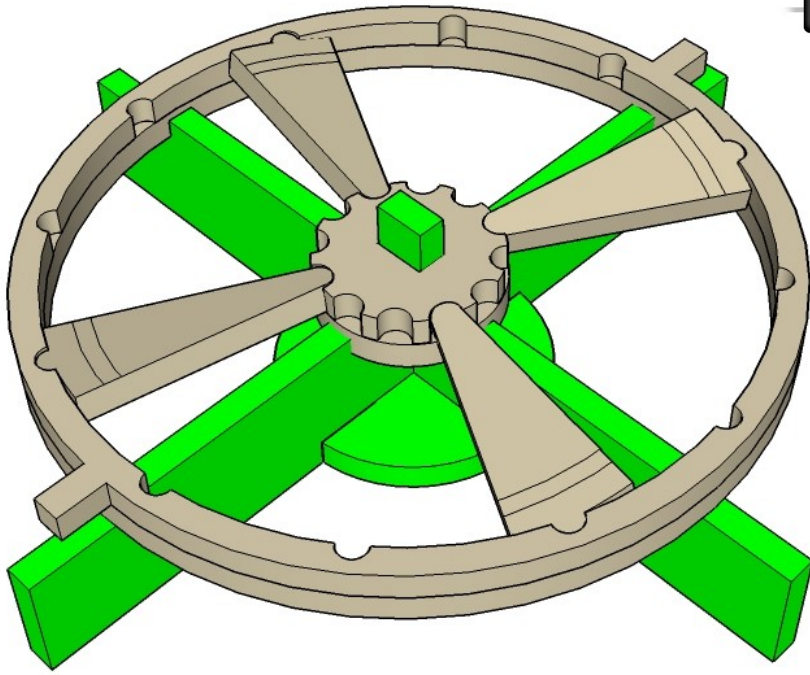
A Jig is also provided to help
align the individual rotor blades
(green)

Be VERY CAREFUL not to glue
your model to the jig.

**NOTE THE DIRECTION OF
THE CENTRAL HUB IN RE-
LATION TO THE OUTER
RING.**



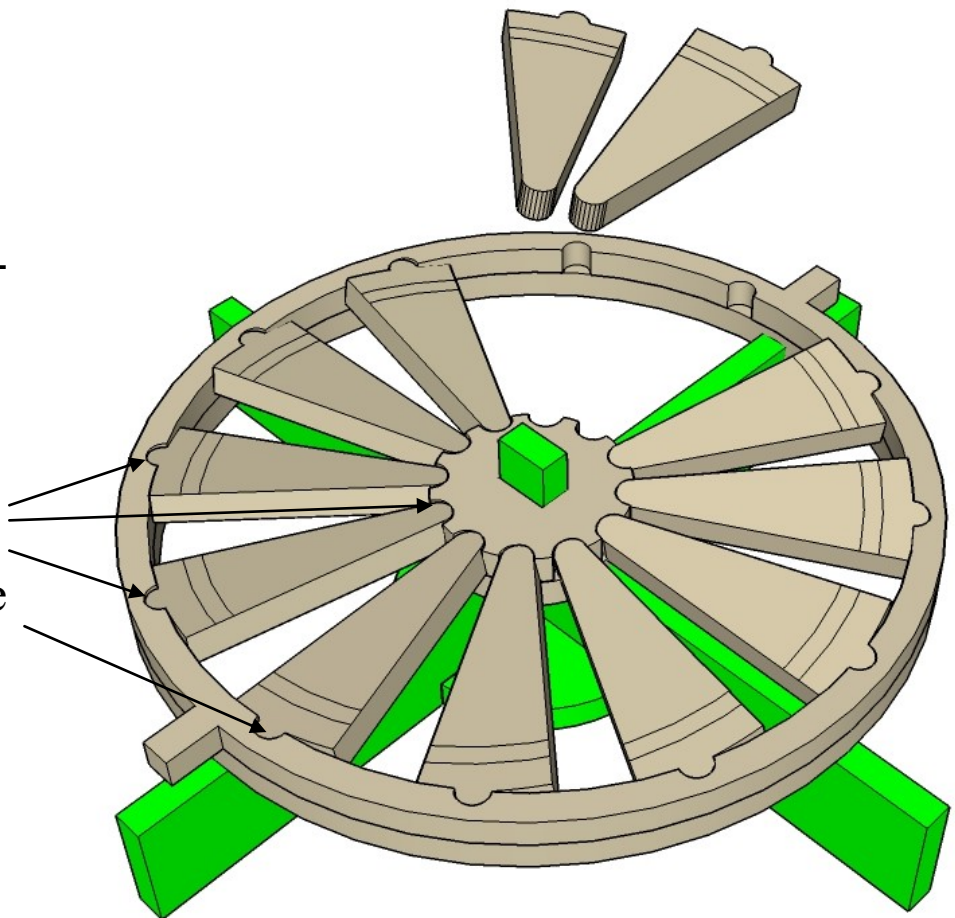
**DO NOT GLUE
ANYTHING TO THE
GREEN JIG!!!!!!**



Choose the angle you want to place the rotor blades at and carefully glue them in place, working alternately from opposite sides.

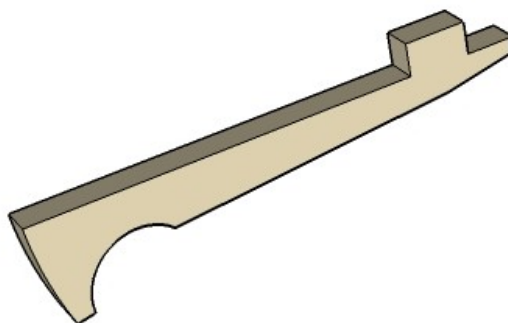
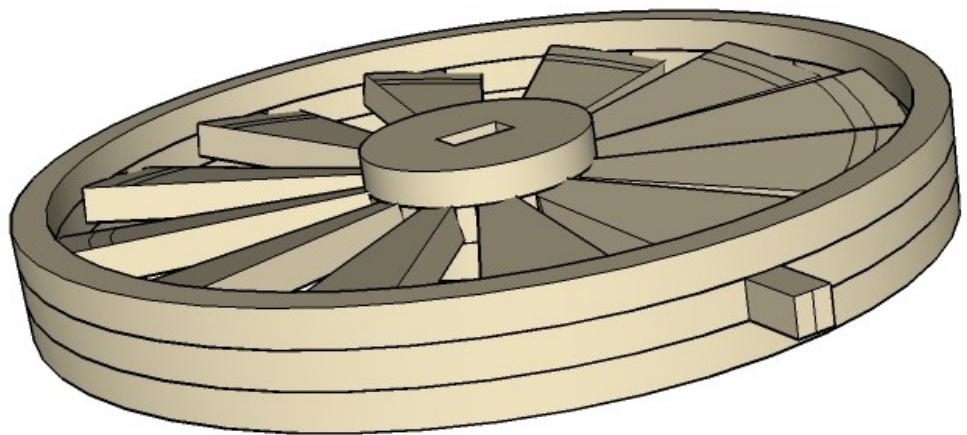
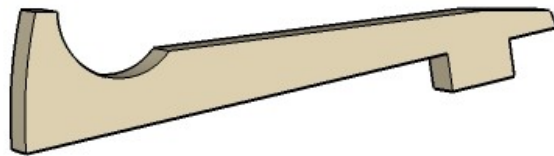
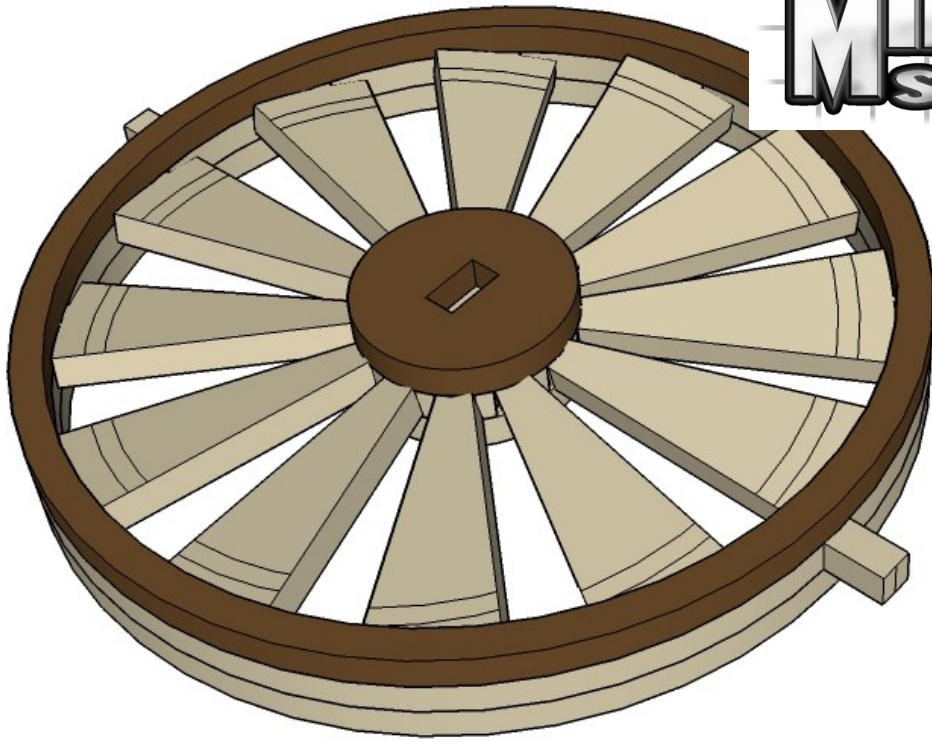
Superglue is useful here. Position the part first, then place a drop of superglue where the parts connect.

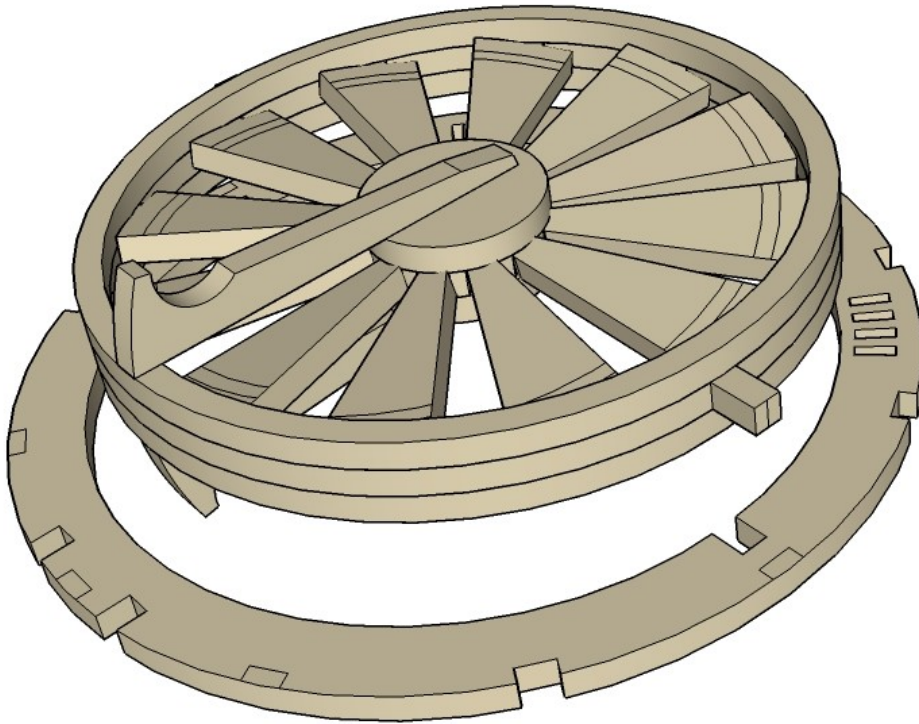
You will have to **trim** the top surface flush after the assembly is dry, so the next part fits properly.



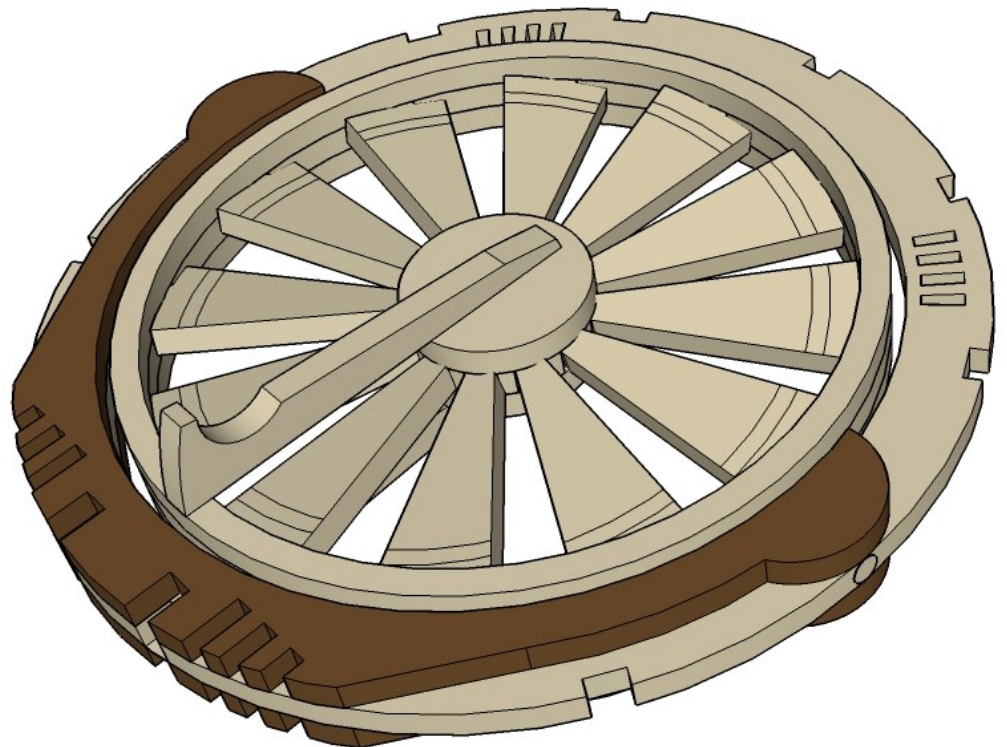
CNC WORKSHOP

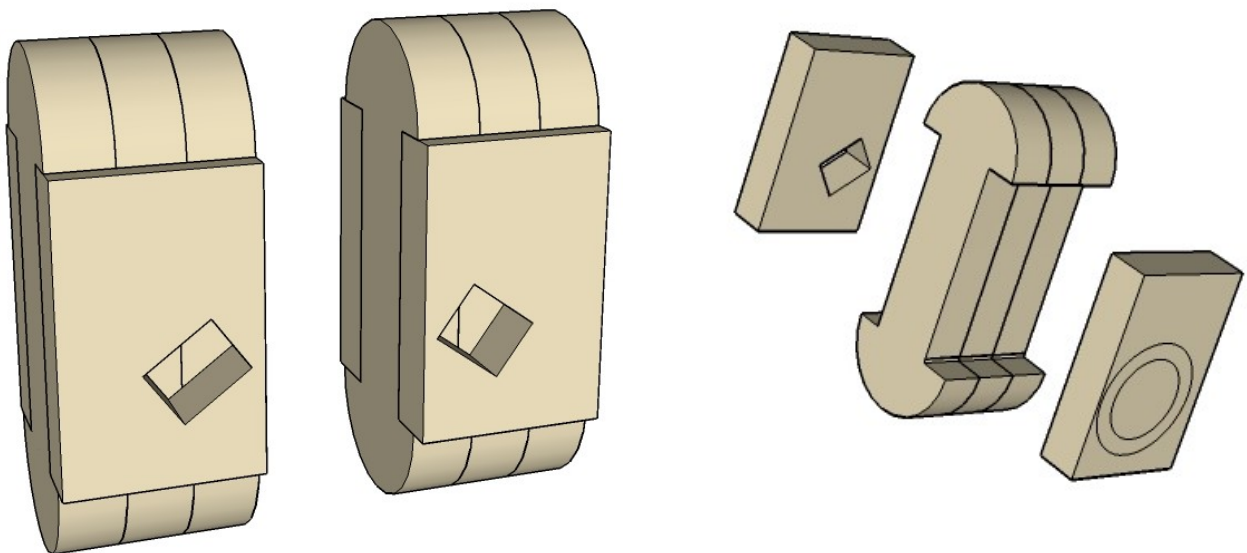
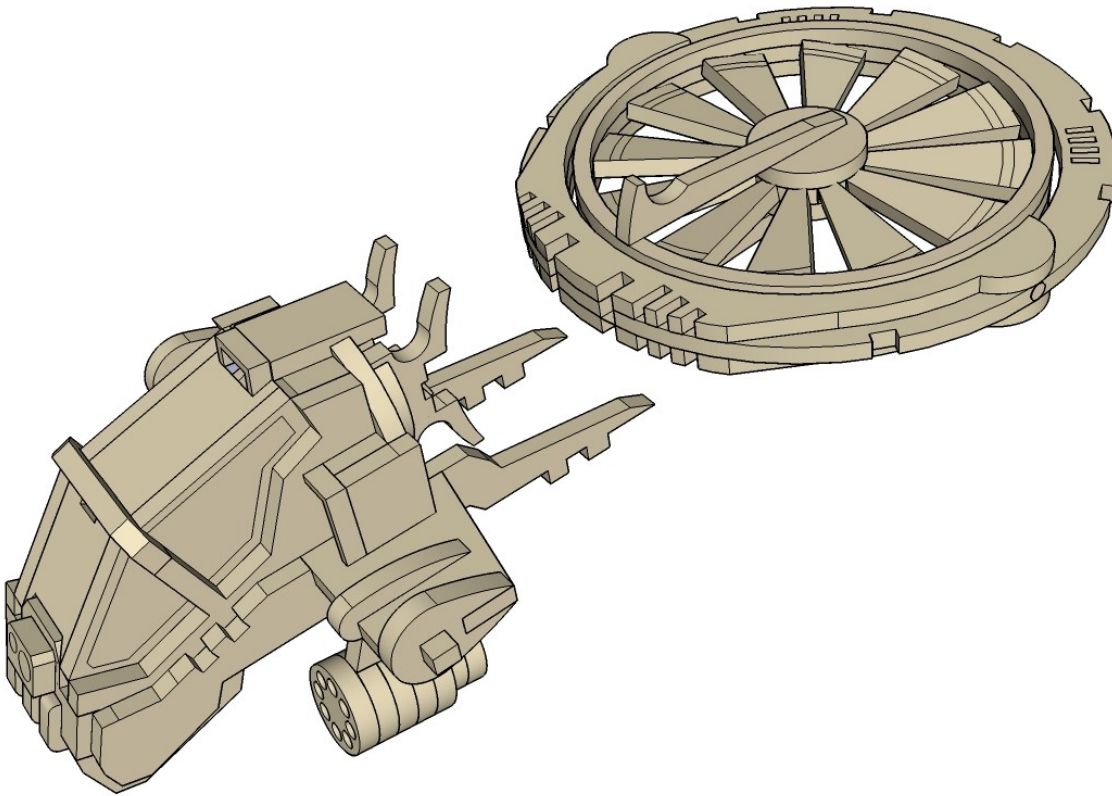
MINIATURE SCENERY





Choose an angle that you like
for the rotor and glue into
position.

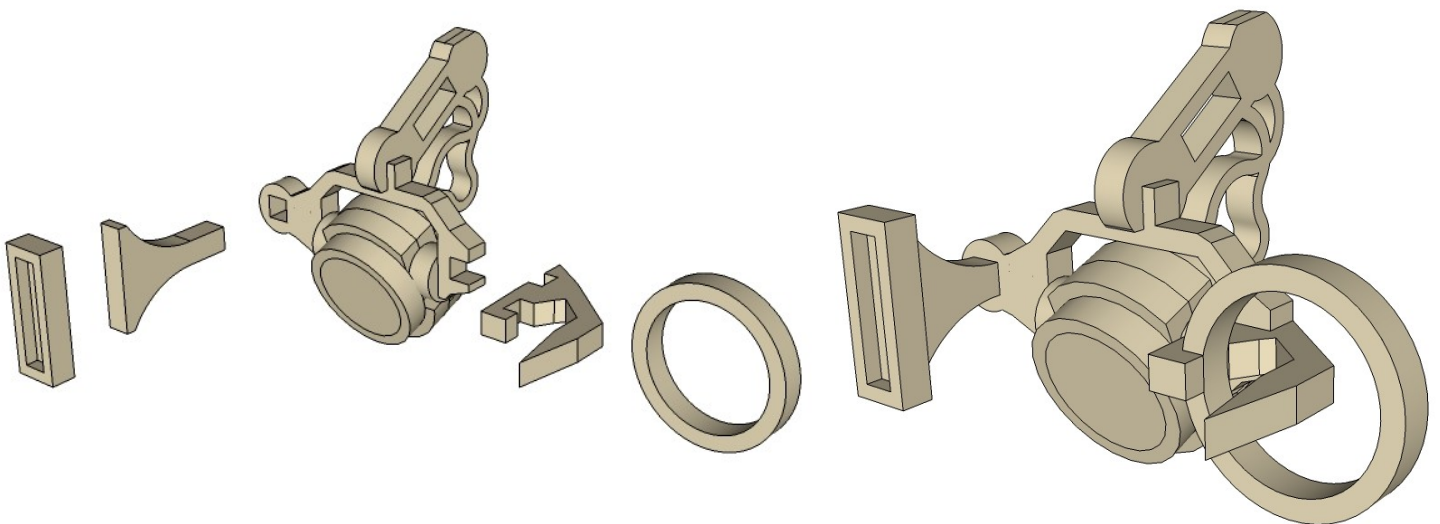
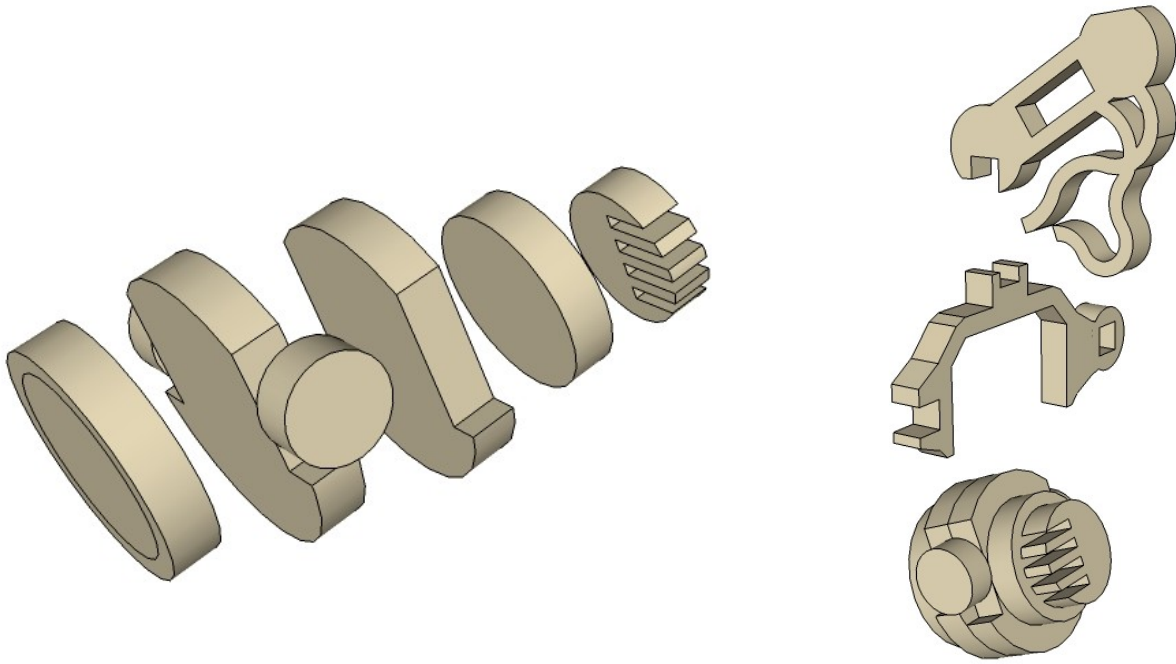
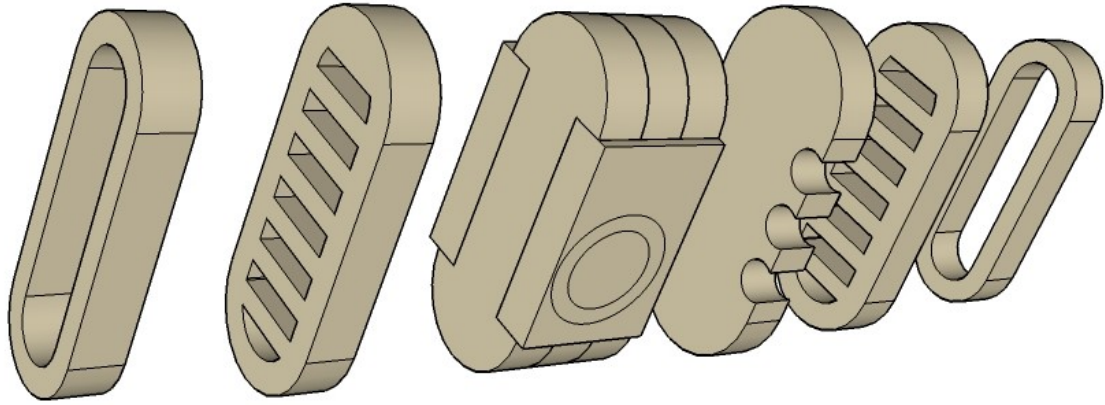


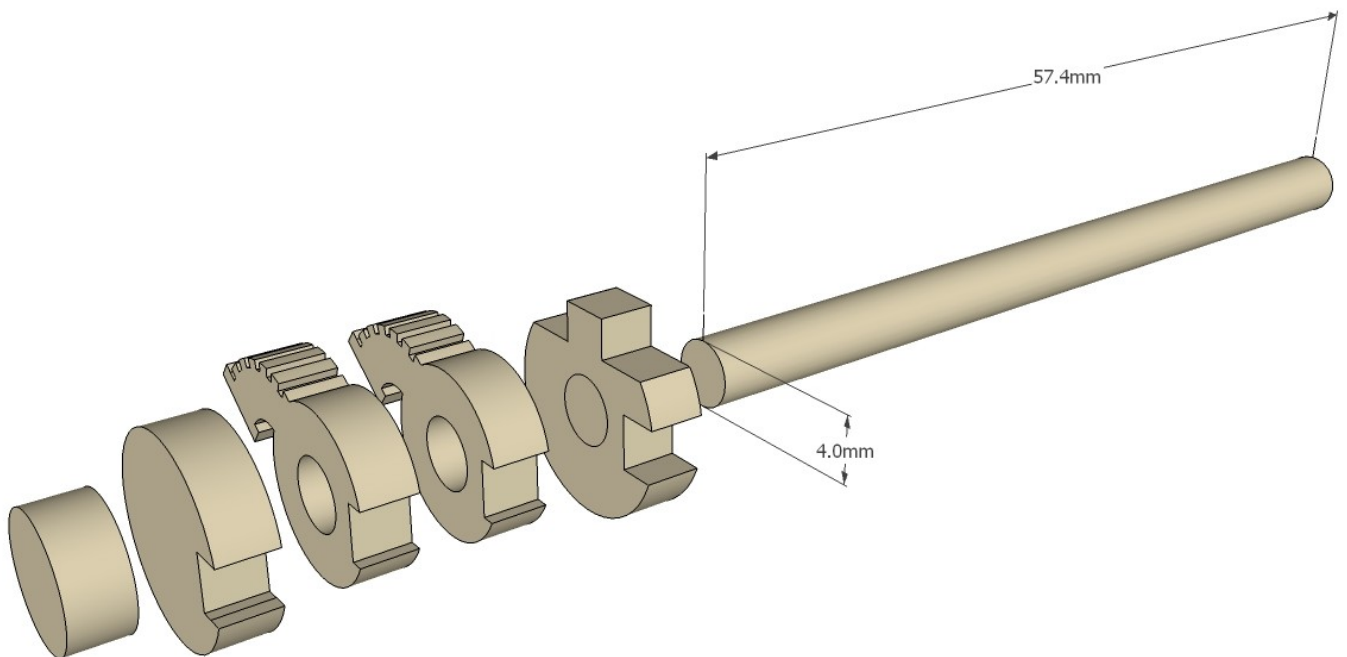
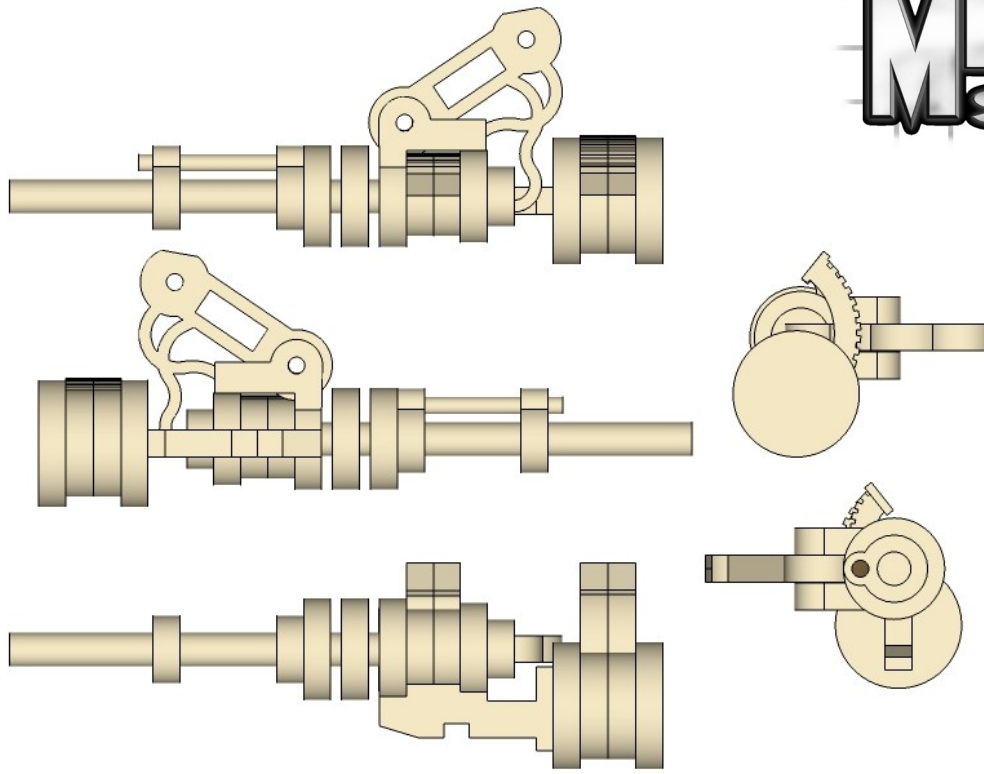


Make sure when you build the
two thrusters that you make
two opposites.

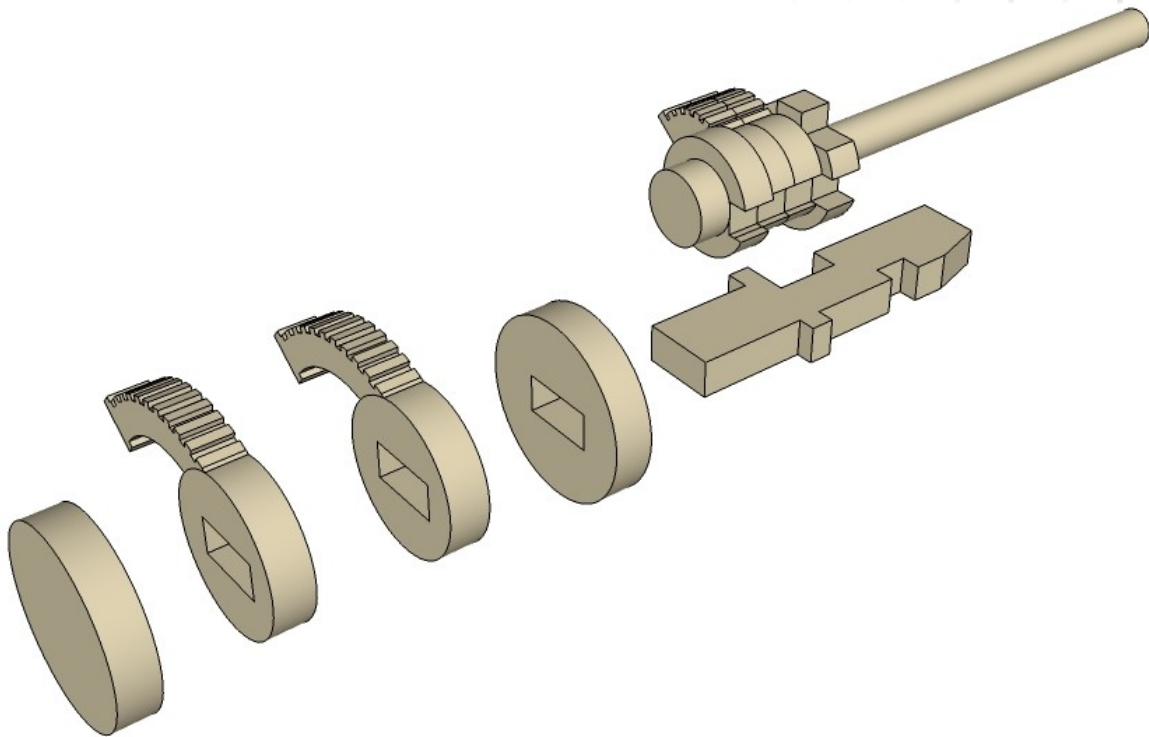
CNC WORKSHOP

MINIATURE SCENERY

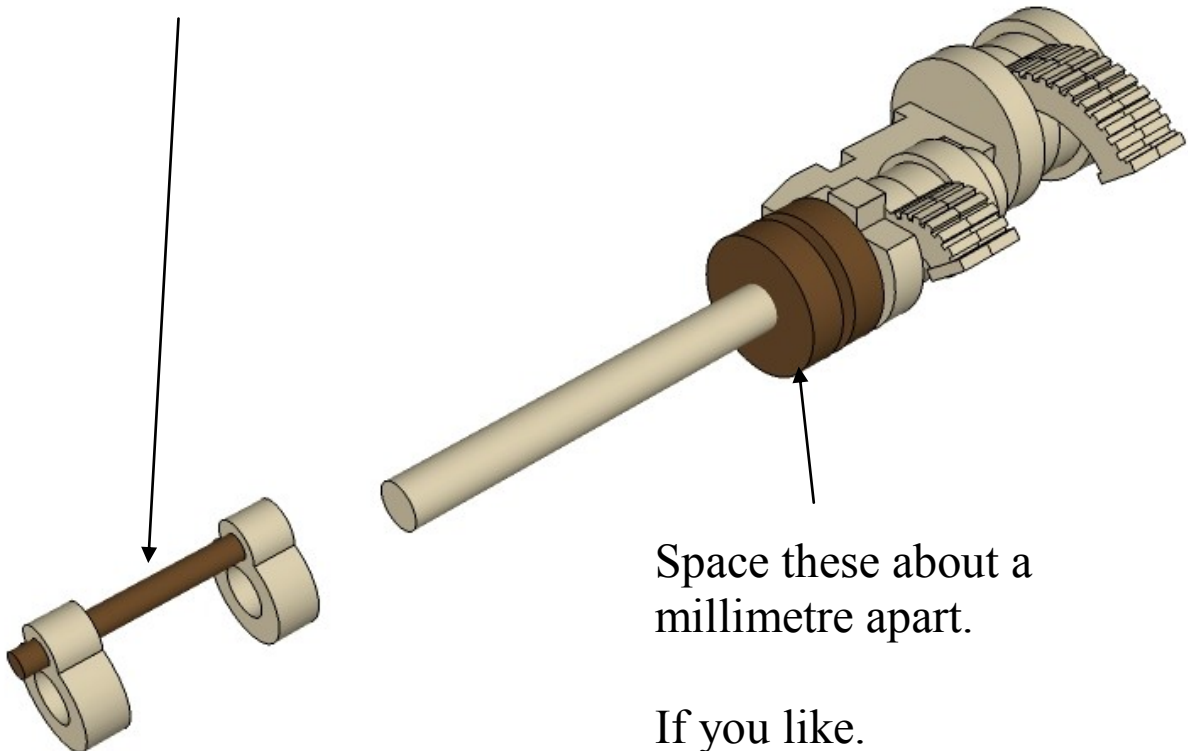




You are going to need a piece of plastic rod/ brass/tubing about 4mm in diameter and 60mm long for this bit. If all else fails, wrapping some paper around a wood BBQ skewer will work just fine.

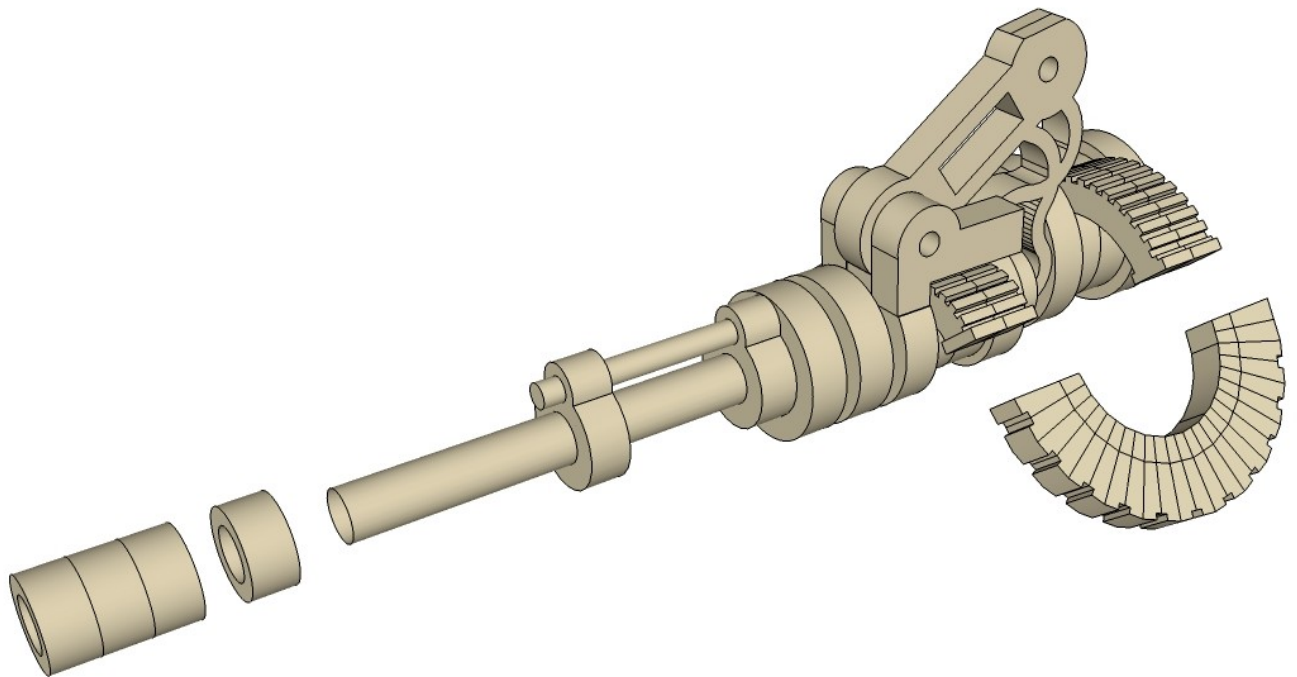
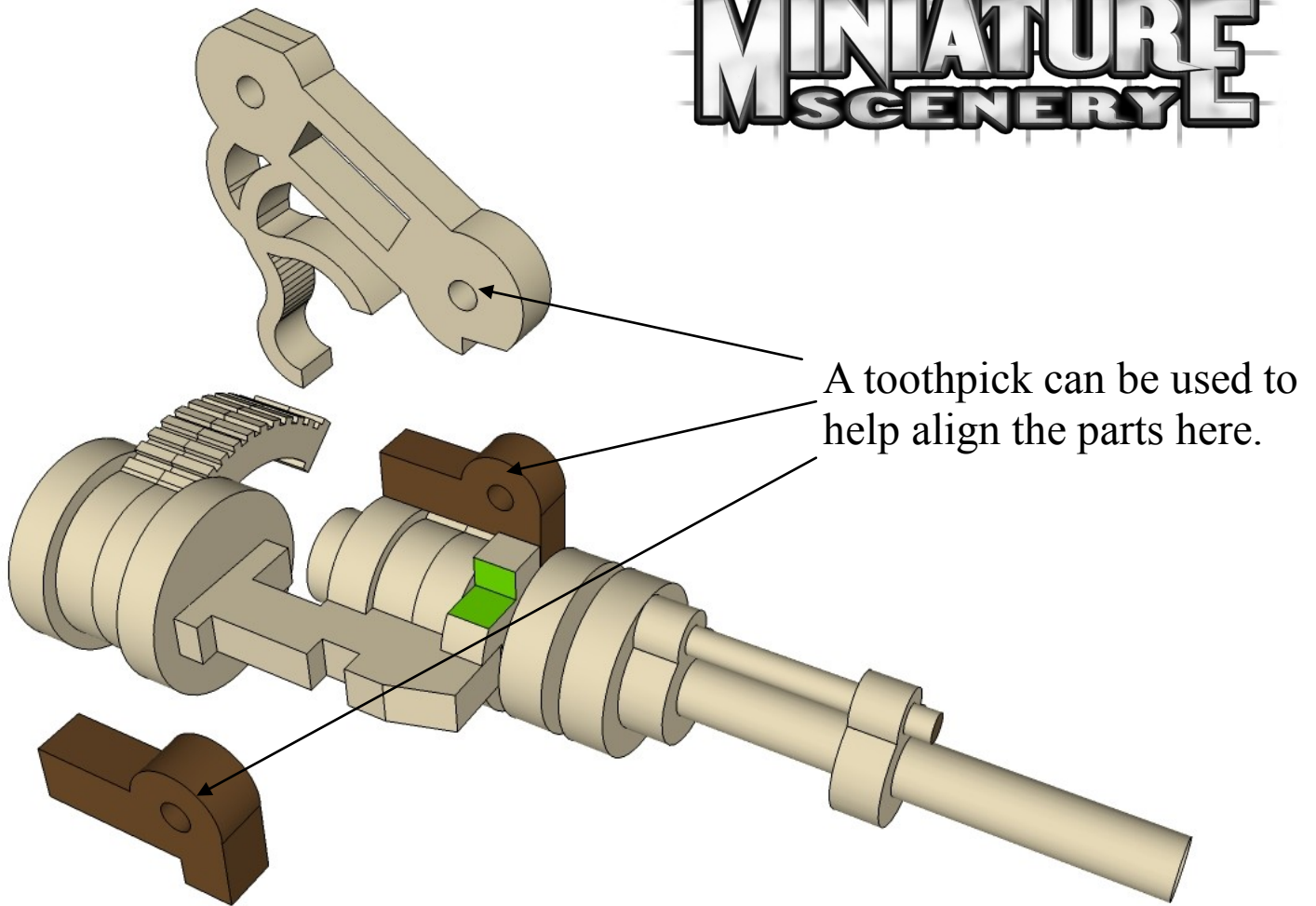


Toothpick. 2mm diameter.



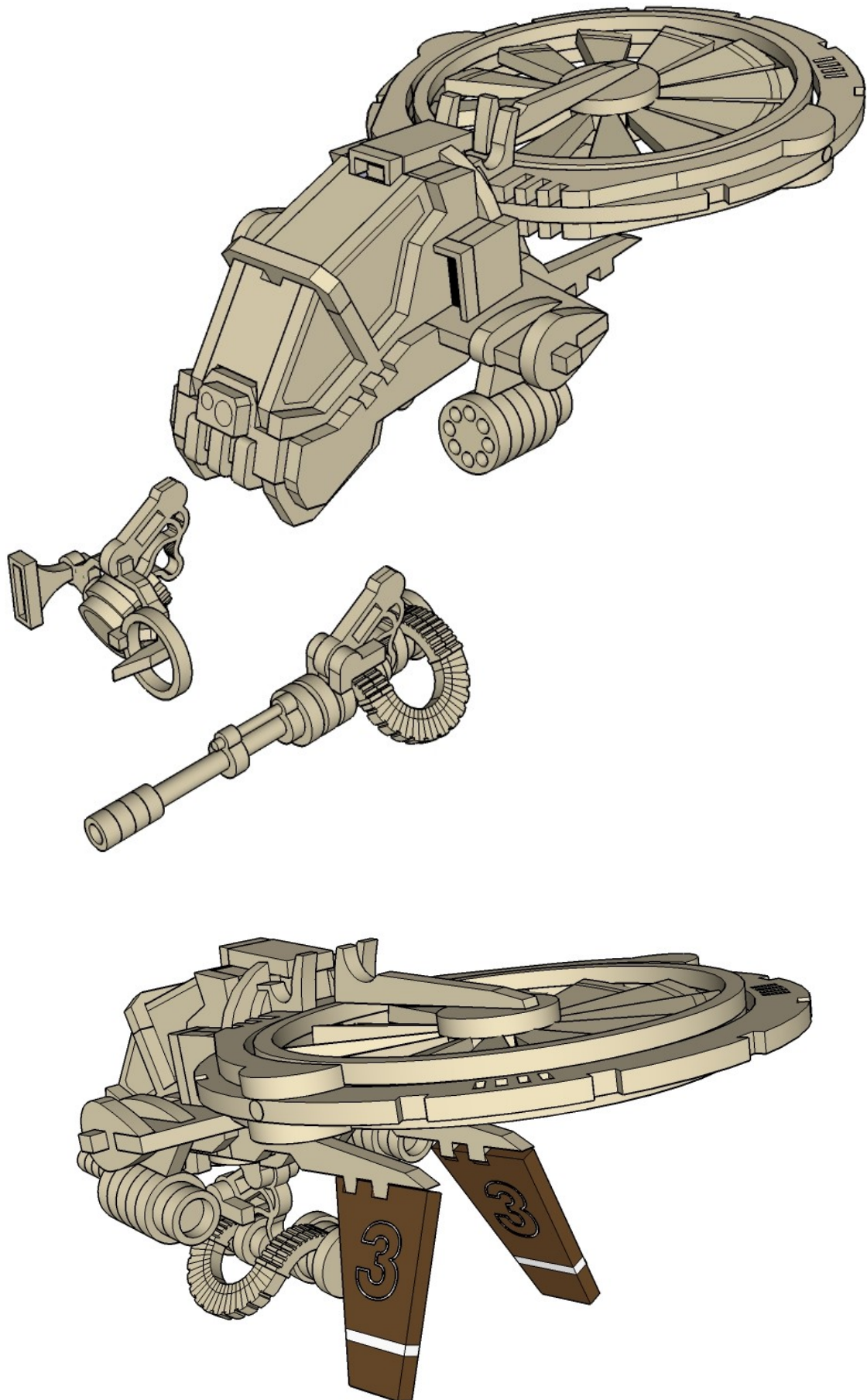
Space these about a
millimetre apart.

If you like.



CNC WORKSHOP

MINIATURE SCENERY



CNC WORKSHOP

MINIATURE SCENERY

